

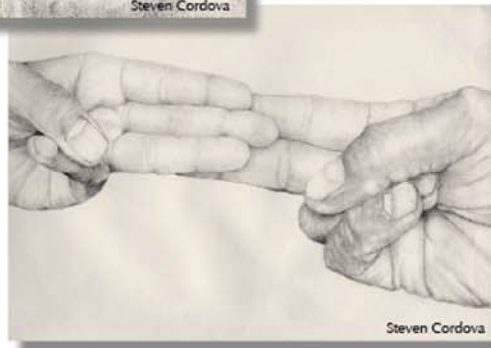
EVALUATE 3-3-2 RULE

This rule is one tool to help estimate the difficulty of laryngoscopy by assessing anatomical limitations to visualizing the larynx, i.e. small mouth opening, short chin—no room to displace the tongue—and superior/anterior location. Criteria evaluated are as follows (using the patient's finger measurements):

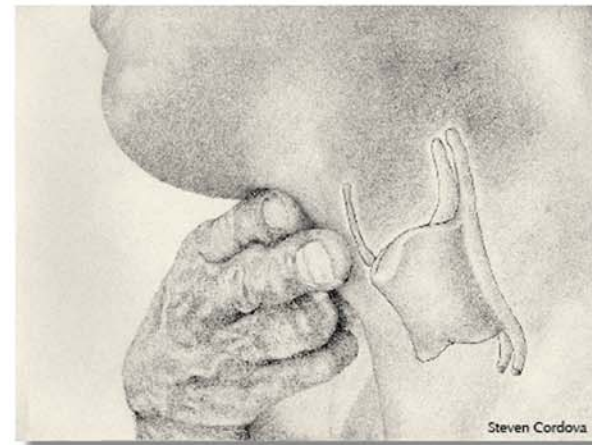
- Check that the mouth opening is at least 3 fingers.
- Check that there is room for 3 fingers between the tip of the chin and the hyoid bone.
- Check that there is room for 2 patient-sized fingers between the hyoid bone and the top of the thyroid cartilage.



Three fingers mouth opening. This is based upon the patient's fingers not yours! The illustration below shows how you can quickly compare your fingers to the patient's. In this example 2 of the provider's fingers are equivalent to 3 of the patient's.



Three fingers from tip of chin to the hyoid bone.



Two fingers from the hyoid bone and the top of the thyroid cartilage.