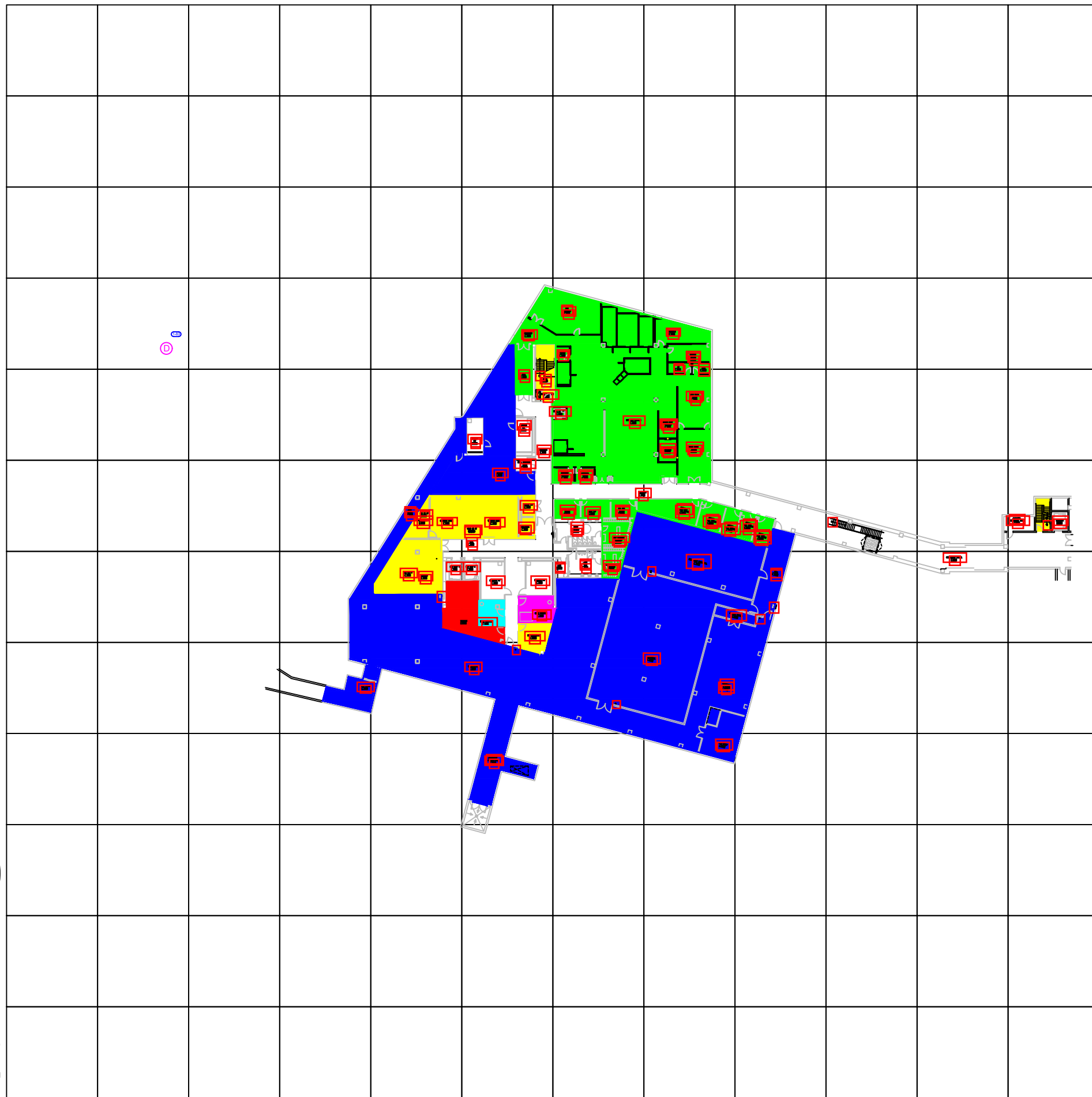


Exhibit D
UNMH
Department
Maps

A B C D E F G H I J K L

1
2
3
4
5
6
7
8
9
10
11
12

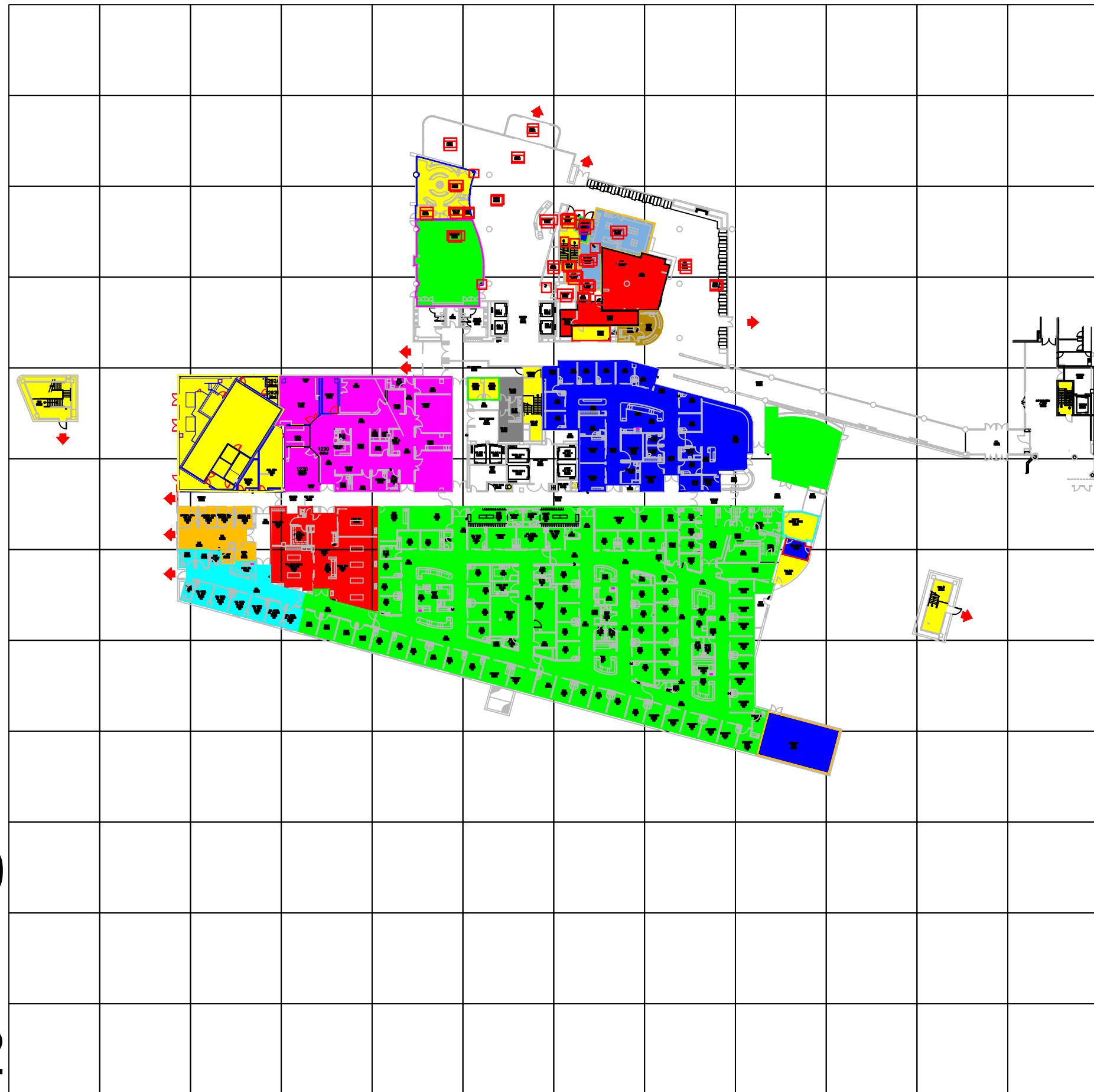


Key-BBRP Basement

- Construction & Planning 615 sq. ft (G-7)
- Environmental Services 194 sq. ft (G-7)
- Facilities Maintenance 20282 sq. ft (G-7)
- Food and Nutrition Services 10578 sq. ft (G-5, G-6)
- Information Technologies 2660 sq. ft (F-6, F-7)
- Linen 270 sq. ft (F-7)

A B C D E F G H I J K L

1
2
3
4
5
6
7
8
9
10
11
12



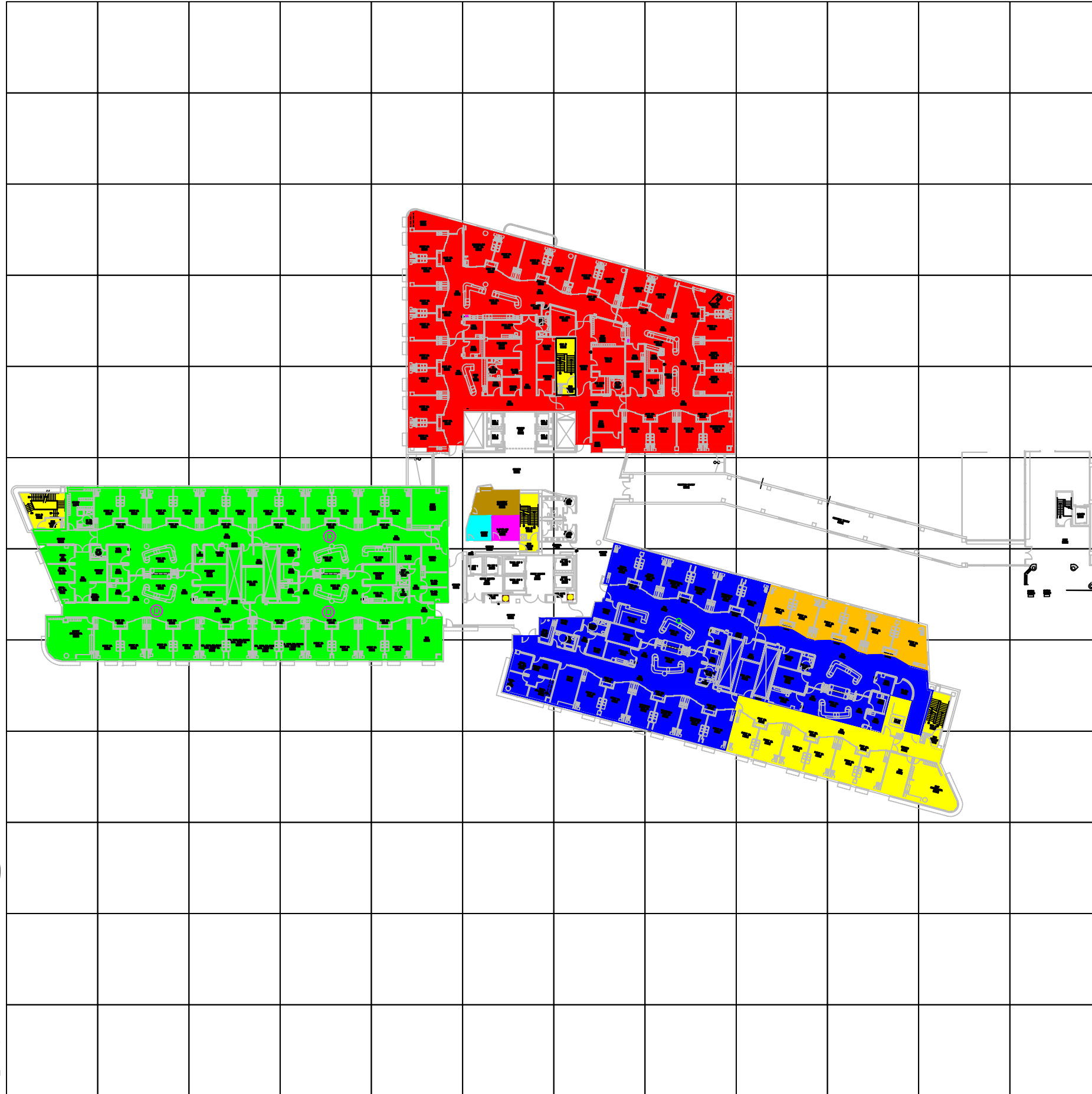
- Key- BBRP 1st Floor**
- Chapel 920 sq ft. (E-2)
 - Conference Room 1660 sq ft. (E-3)
 - Decontamination 1018 sq ft. (C-6)
 - Espresso Cafe 1018 sq ft. (H-4)
 - Fire Command Center 128 sq ft. (I-6)
 - General Emergency Department (G-7, I-5)
 - Gift Shop 996 sq ft. (G-3)
 - Information Technology 3772 sq ft. (G-7, I-5)
 - Jersey Jack's 1488 sq ft. (H-5)
 - MEC Emergency Department 1795 sq ft. (C-7)
 - On-Call 434 sq ft. (F-5)
 - Pediatric Emergency Department 6003 sq ft. (H-5)
 - Preventer Room 993 sq ft. (I-9)
 - Radiology 5731 sq ft. (D-5)
 - Research Residents 205 sq ft. (F-5)
 - Security 265 sq ft. (I-6)
 - Trauma Emergency Department 2772 sq ft. (D-6)
 - Vending 167 sq ft. (G-4)
 - Wheelchair Storage 77 sq ft. (G-3)

A B C D E F G H I J K L

Key- BBRP 2nd Floor

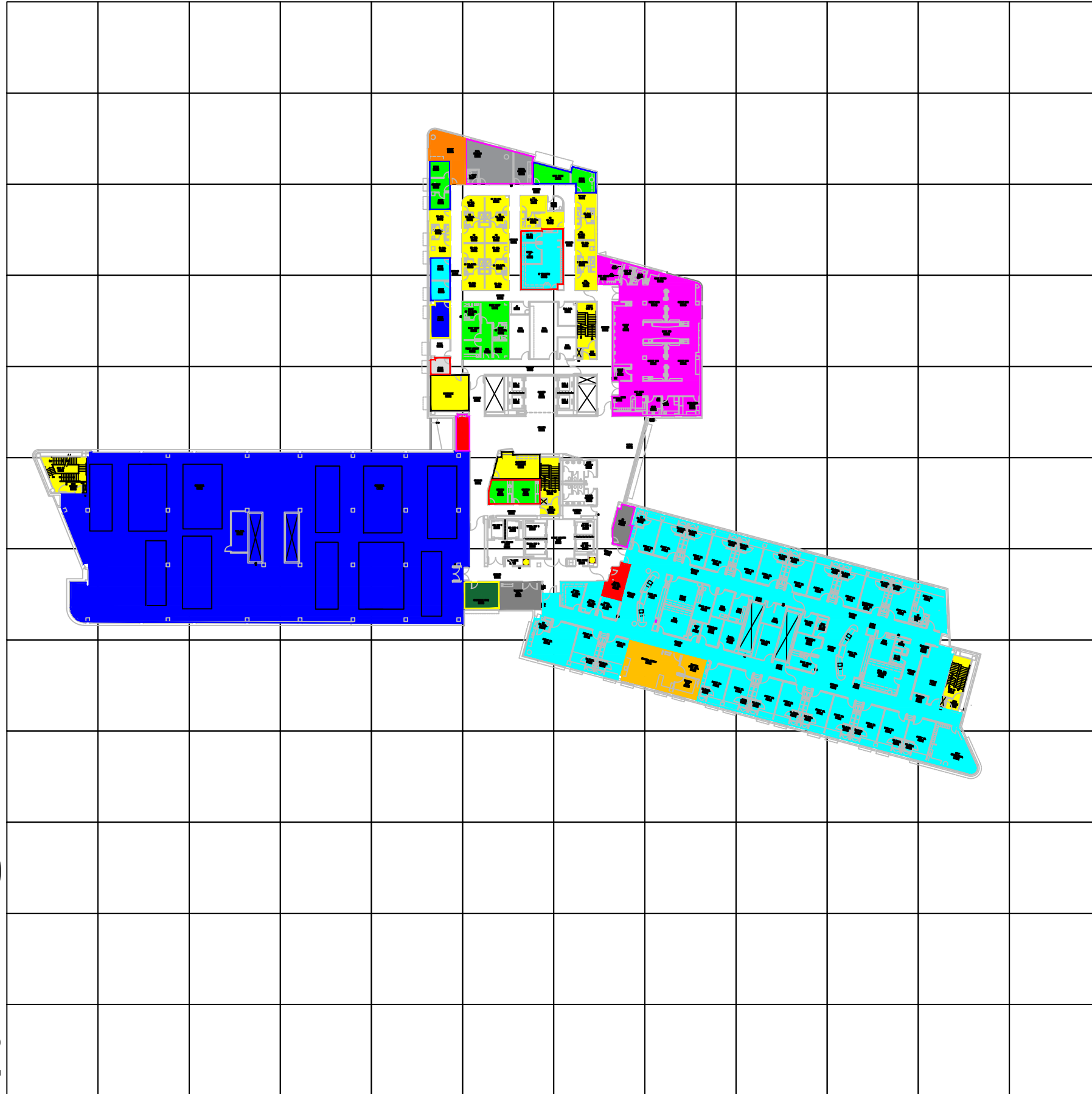
- Burn ICU 3975 sq ft. (I-9)
- Cardiothoracic ICU 1913 sq ft. (I-7)
- Care Management 193 sq ft. (F-6)
- Conference Room 332 sq ft. (F-6)
- Medical ICU 20259 sq ft. (C-7)
- Neurological ICU 17879 sq ft. (F-4)
- Radiology 193 sq ft. (F-6)
- Trauma ICU 13722 sq ft. (H-7)

1
2
3
4
5
6
7
8
9
10
11
12



A B C D E F G H I J K L

1
2
3
4
5
6
7
8
9
10
11
12

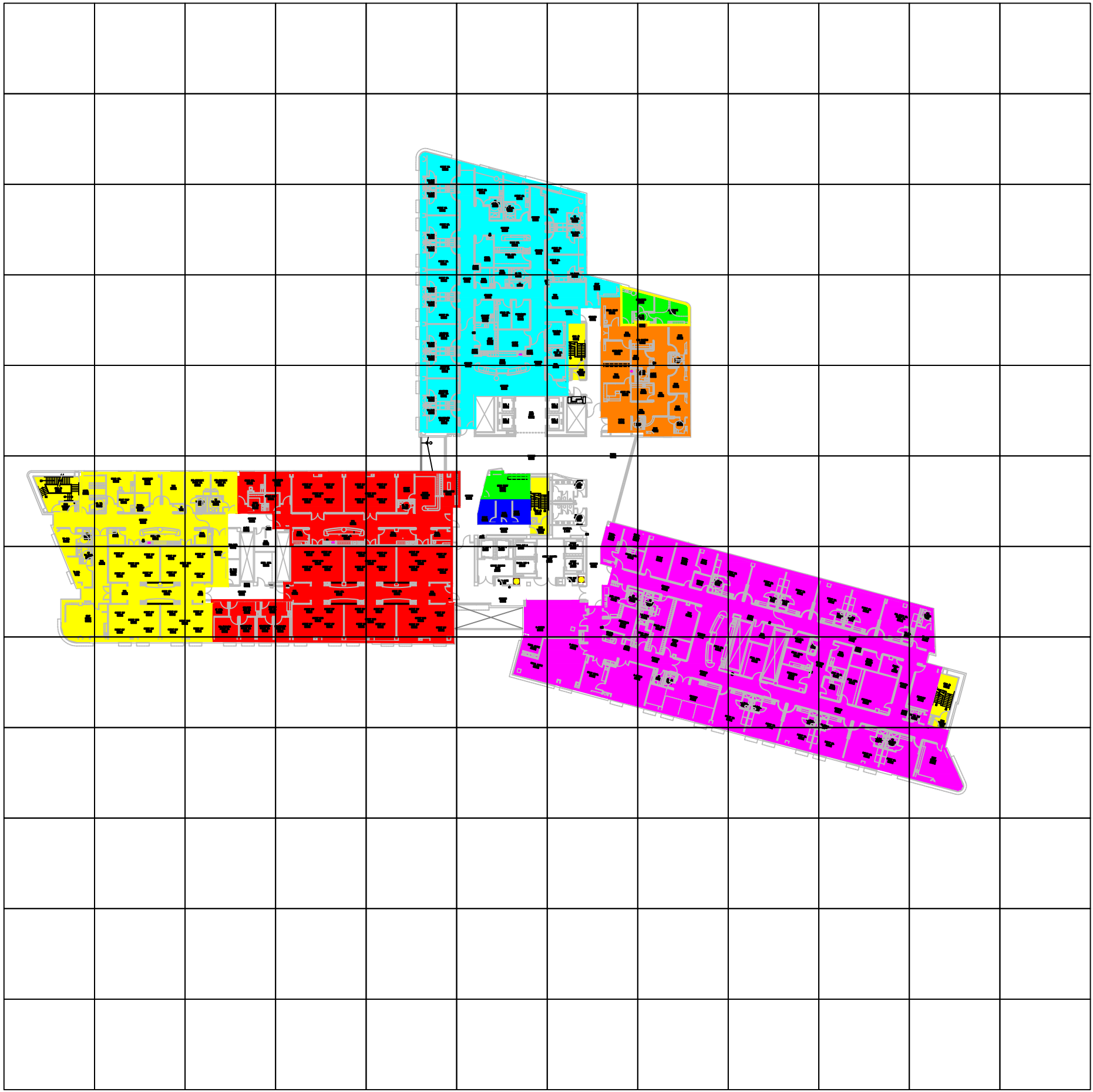


Key-BBRP 3rd Floor

- Birth Registrar 180 sq ft. (G-7)
- Conference Room 738 sq ft. (E-5, F-6)
- Department Of Nursing Excellence 272 sq ft. (F-7)
- Developmental Care Program 93 sq ft. (E-4)
- Employee Lactation Station 144 sq ft. (F-5)
- Facilities and Maintenance 19847 sq ft. (D-6)
- Family Support Services 207 sq ft. (F-4)
- ICN 641 sq ft. (E3, G2)
- Intermediate Care Nursery 3849 sq ft. (F-4)
- Lactation Clinic 200 sq ft. (G-6)
- Mother/Baby Unit 18302 sq ft. (I-7)
- NBICU Charge Nurse 380 sq ft. (E-2)
- Newborn Clinic 363 sq ft. (F-6)
- Newborn Nursery 937 sq ft. (F-7)
- Newborn Transport Service 327 sq ft. (F-7)
- NNP/PA Services 206 sq ft. (E-4)
- On-Call 2444 sq ft. (E-3, F-3, G-3)
- Pediatric Research 722 sq ft. (F-2)
- Respiratory Therapy Workroom 745 sq ft. (F-3)
- Unit-Based Educator Newborn ICU/ICN 246 sq ft. (E-3)

A B C D E F G H I J K L

1
2
3
4
5
6
7
8
9
10
11
12



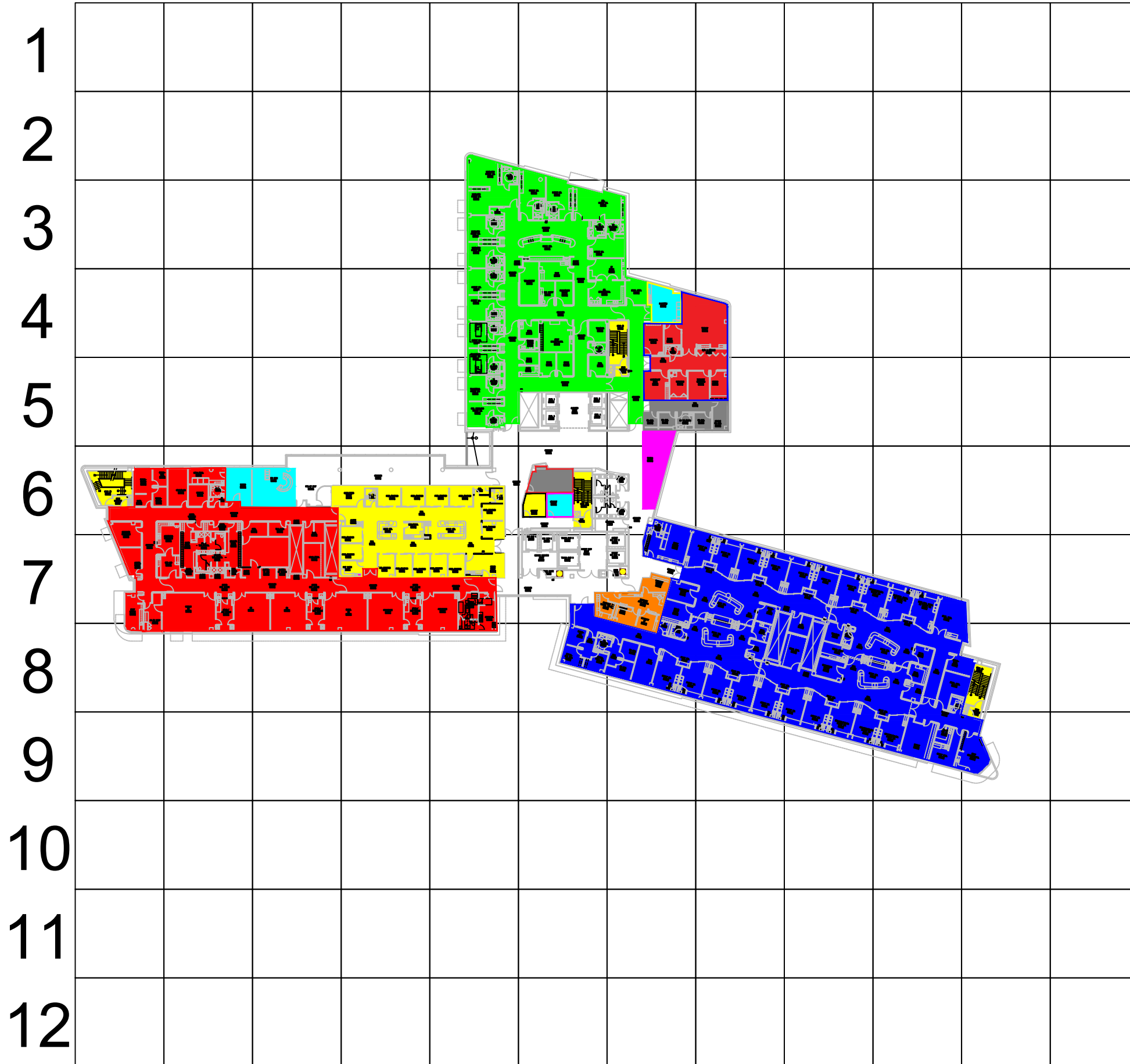
Key-BBRP 4th Floor

- Fetal Testing Center 592 sq ft. (H-4)
- Intermediate Care Nursery 7858 sq ft. (B-6)
- Labor and Delivery 19767 sq ft. (H-7)
- NBICU/ICN Family Lounge 314 sq ft. (F-6)
- Newborn ICU 10105 sq ft. (E-6)
- Newborn ICU Offices 362 sq ft. (F-6)
- OB Triage 2979 sq ft. (H-5)
- Women's Special Care 11428 sq ft. (F-3)

A B C D E F G H I J K L

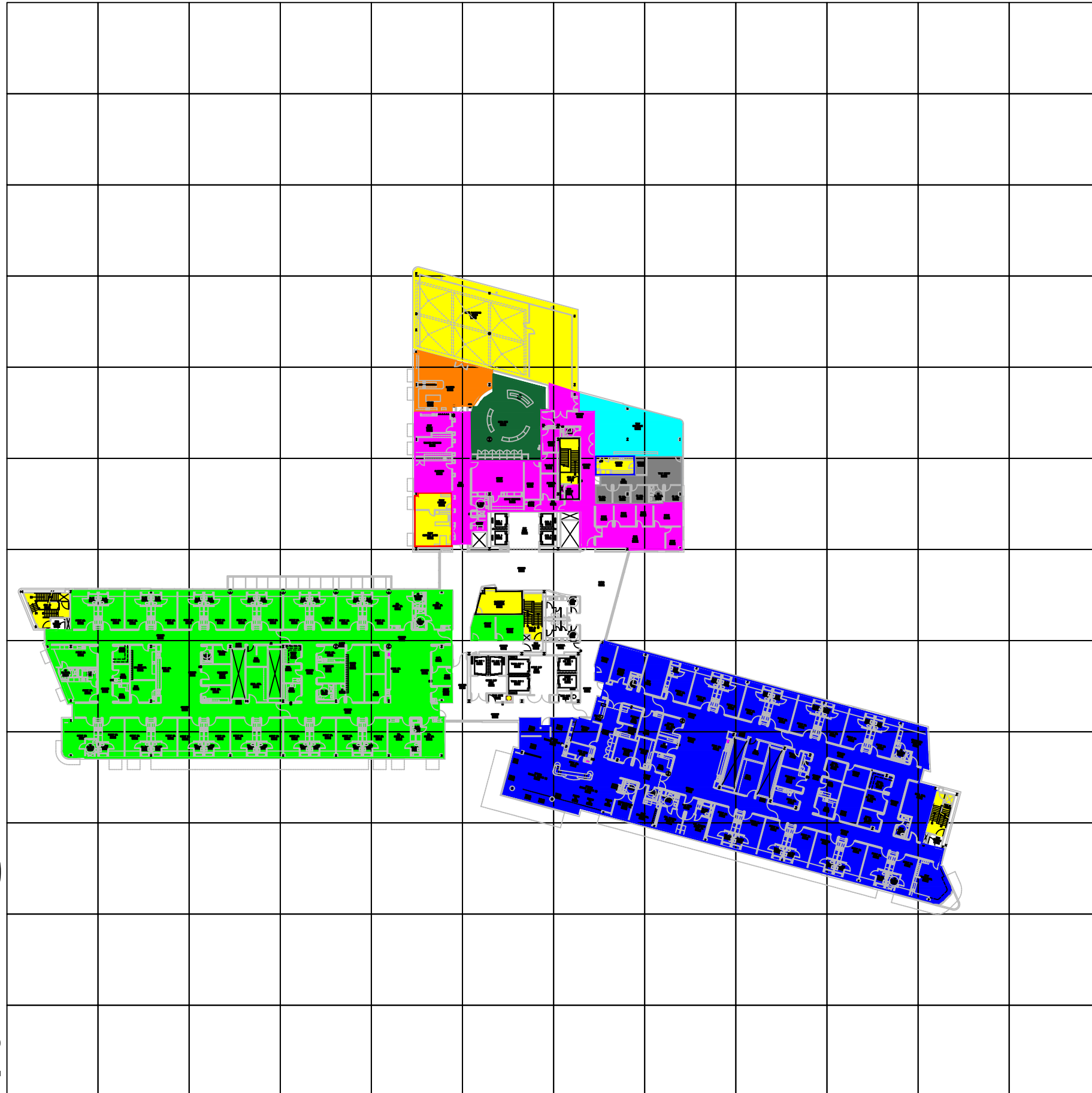
Key-BBRP 5th Floor

- Adaptive Technology Lab 540 sq ft. (G-6)
- Carrie Tingley Inpatient 12125 sq ft. (F-3)
- Carrie Tingley Playroom 349 sq ft. (G-4)
- Carrie Tingley Therapy 2374 sq ft. (G-4)
- Conference Room 330 sq ft. (F-6)
- Consultation Room 164 sq ft. (F-6)
- On-Call 760 sq ft. (G-5)
- Pediatric Echo Room 193 sq ft. (F-6)
- Pediatric ICU 18267 sq ft. (I-8)
- Pediatric Sedation 797 sq ft. (C-6)
- Pediatric Operating Rooms 12280 sq ft. (C-7)
- Pharmacy 797 sq ft. (G-7)
- Pre/Post Operation 4700 sq ft. (D-7)



A B C D E F G H I J K L

1
2
3
4
5
6
7
8
9
10
11
12

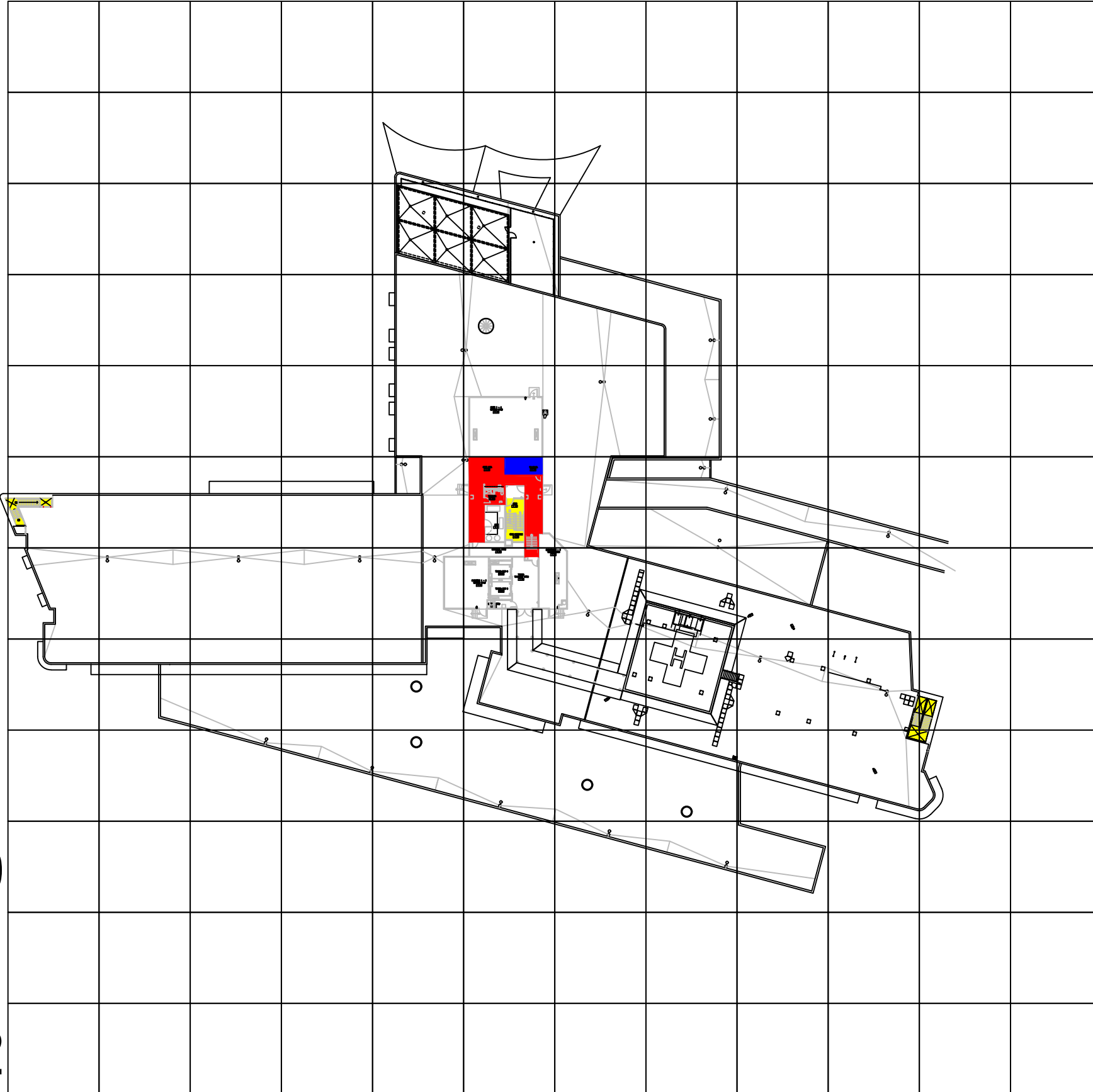


Key-BBRP 6th Floor

- Child Life 5513 sq ft. (F-6)
- Child Life Catering Kitchen 212 sq ft. (G-6)
- Child Life Jeff Apodaca Media Center 1567 sq ft. (F-5)
- Child Life Pete's Playground 3914 sq ft. (F-4)
- Child Life Playroom 1057 sq ft. (E-5)
- Conference Room 309 sq ft. (F-7)
- General Pediatrics 19717 sq ft. (C-8, F-7)
- Pediatric Special Care 19599 sq ft. (I-9)
- Resident On-Call 974 sq ft. (H-6)
- Ronald McDonald Room 585 sq ft. (E-6)
- Tully Conference Room 1245 sq ft. (G-5)

A B C D E F G H I J K L

1
2
3
4
5
6
7
8
9
10
11
12



Key-BBRP 7th Floor

- Information Technology 186 sq ft. (F-6)
- Security 1075 sq ft. (F-6)

A B C D E F G H I J K L

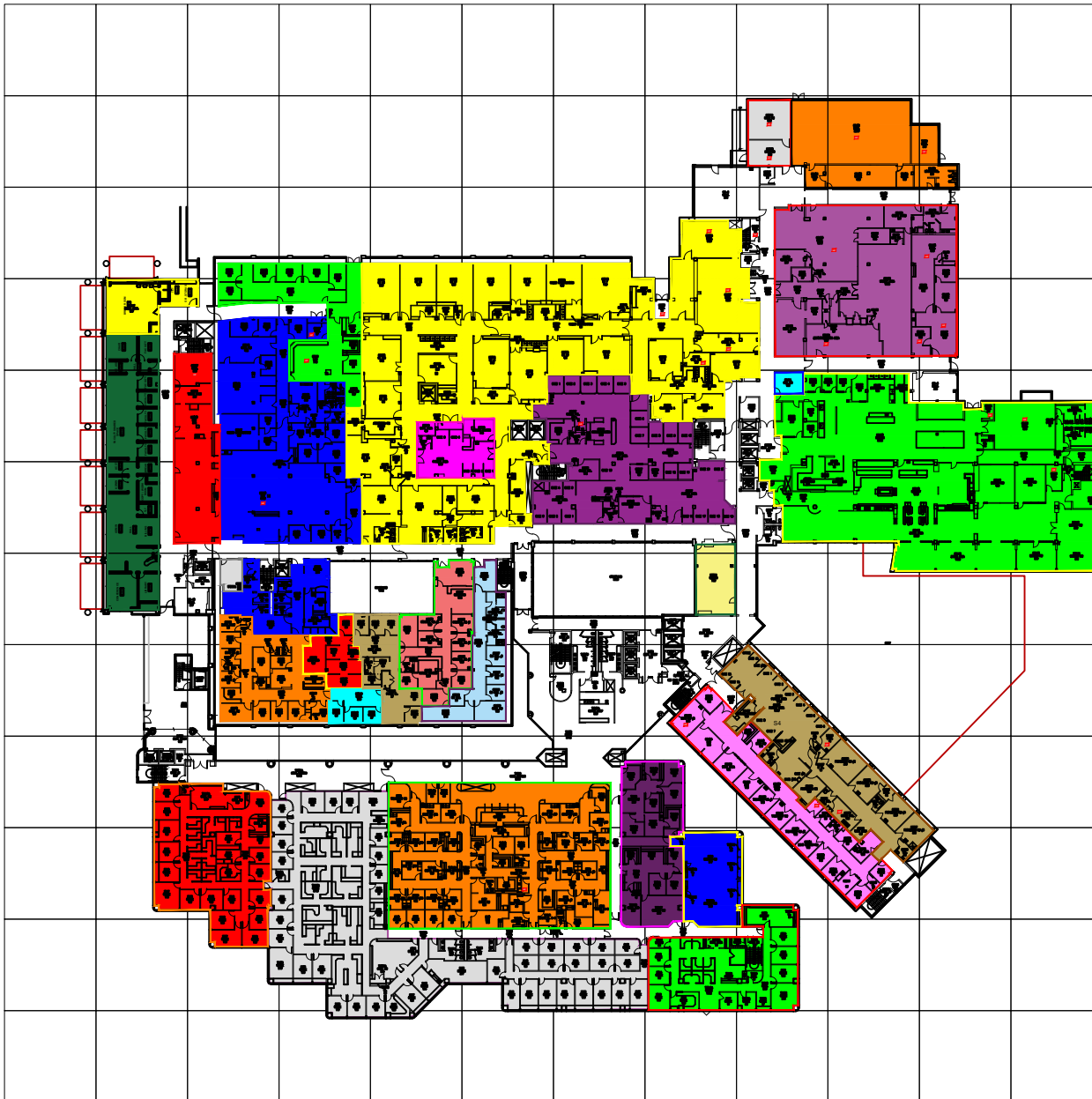
1
2
3
4
5
6
7
8
9
10
11
12



- Key-1st Floor**
- Administration 10258 sq ft. (I-9)
 - Admitting and Communications 3757 sq ft. (C-6)
 - Care Management 2962 sq ft. (D-10)
 - Chapel 553 sq ft. (H-7)
 - Clinical Engineering 2308 sq ft. (I-5)
 - Eye Clinic 5444 sq ft. (D-10)
 - Fluoroscopy 2650 sq. ft (E-6)
 - Gift Shop 933 sq ft. (F-7)
 - Health Information Management 5835 sq ft. (I-6,J-7)
 - Inpatient Advanced Practice Providers & Physician Assistant Administration 194 sq ft. (B-5)
 - IR Clinic (1-West) 2340 sq ft. (C-7)
 - Native American Health Services 1277 sq ft. (B-7)
 - Nephrology Clinic 2610 sq ft. (E-7)
 - Nuclear Medicine 6408 sq ft. (H-4)
 - Orthopedics 6850 sq. ft (G-6)
 - Patio 1621 sq ft. (D-7)
 - Psychiatric Consultation 979 sq ft. (H-6)
 - Radiology 21844 sq. ft (D-4,B-4,B-6,C-6)
 - Rehabilitation Services 4951 sq ft. (I-7)
 - Security 1509 sq ft. (F-7, H-7, A-4)
 - Subway 1565 sq ft. (E-9)
 - Urgent Care 5006 sq ft. (A-4)
 - Urology/Vascular Clinic 5441 sq ft. (D-8)
 - Volunteer Services 1008 sq ft. (G-7)

A B C D E F G H I J K L

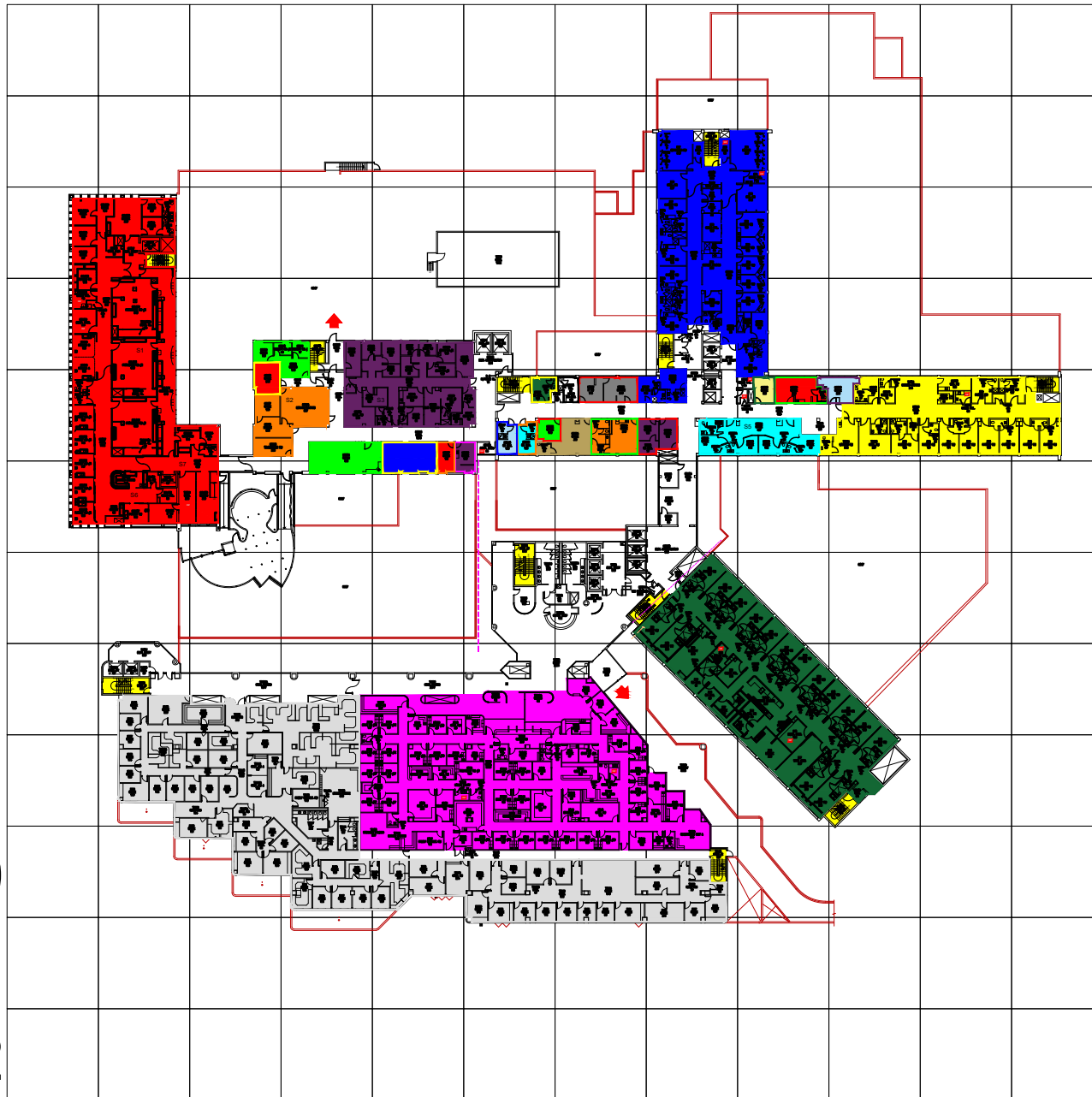
1
2
3
4
5
6
7
8
9
10
11
12



- Key-2nd Floor**
- Anesthesia Residents 1786 sq. ft (F8)
 - Blood Bank 2426 sq ft. (B6)
 - Conference Rooms 1644 sq ft. (H10)
 - Food and Nutrition Services 16008 sq ft. (K6)
 - GI-Clinic 4535 sq ft. (I8)
 - Infection Prevention Control 524 sq. ft (D8)
 - Linen 836 sq. ft (I2)
 - Mail Room 180 sq ft. (I5)
 - Material Management 3706 sq. ft (J2)
 - Neuro-Surgery 2953 sq ft. (H10)
 - Operating Rooms 24240 sq ft. (E6,B4)
 - Orthopedics 4859 sq ft. (C10)
 - PACU 1324 sq. ft (E5)
 - Pathology 3509 sq ft. (D3)
 - Pre-Anesthesia Clinic 2355 sq. ft (E7)
 - Pre/Post Anesthesia Care 6486 sq. ft (G5)
 - School of Medicine Anesthesiology & Critical Care Medicine 4209 sq ft. (B5)
 - Sterile Processing 8151 sq ft. (J3)
 - Surgery Department 12308 sq ft. (D9)
 - Surgery Waiting 819 sq. ft (H7)
 - Surgical Specialties Administration 1275 sq. ft (E7)
 - Surgical Specialties Clinic 9655 sq. ft (E7)
 - Transfusion Medical Fellowship 202 sq. ft (C7)
 - Transplant 2654 sq. ft (C8)
 - Tricore 9650 sq. ft (C6,C7)
 - Vascular Lab/Heart Station 3727 sq.ft (H8)

A B C D E F G H I J K L

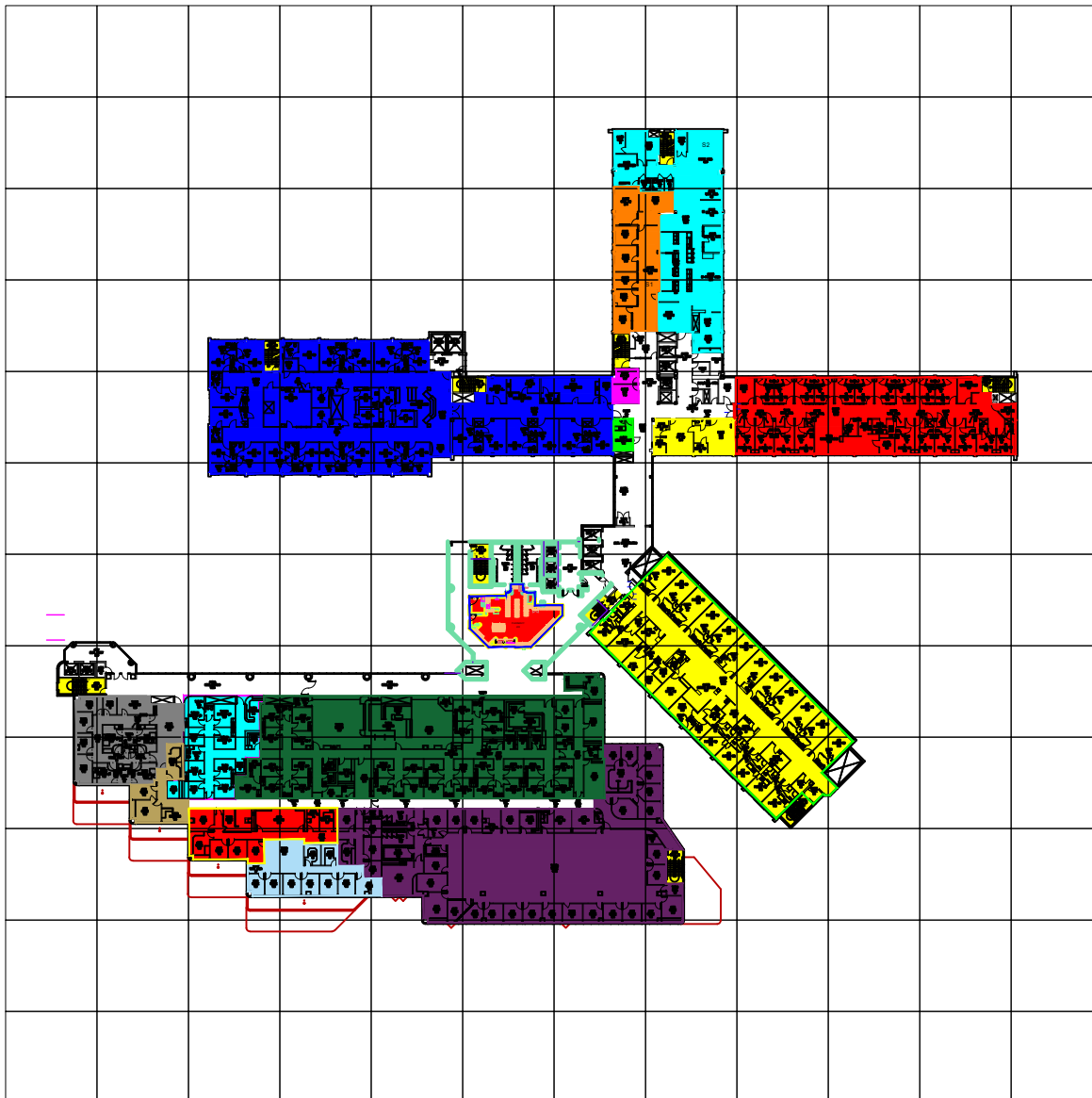
1
2
3
4
5
6
7
8
9
10
11
12



- Key- 3rd Floor**
- Administration 1159 sq ft. (I5)
 - Adult Oncology 4794 sq ft. (J5)
 - Arts and Medicine 148 sq ft. (F5)
 - Breast & Cervical Program BCC 176 sq ft. (E5)
 - Burn and Trauma 486 sq ft. (G5)
 - Burn and Wound Services 430 sq ft. (G5)
 - Cardiac Cath Labs 11035 sq ft. (B5)
 - Children's Heart Center 3254 sq ft. (E5)
 - Clinical Documentation Trauma and Pulse Team Break Room 1115 sq ft. (D5)
 - Communications 129 sq ft. (G5)
 - Facilities 403 sq ft. (G5)
 - House Administration, Safety Preparedness and and Advanced Clinical Care 490 sq ft. (J5)
 - Inpatient Advanced Practice Providers & Physician Assistants 156 sq ft. (I5)
 - Inpatient Family Medicine 7000 sq ft. (H5,H4)
 - Internal Medicine Call Room 179 sq ft. (F5)
 - Inpatient Orthopedics 8723 sq ft. (H7)
 - Meditation Room 161 sq ft. (F5)
 - Mid-Wives Suite 238 sq ft. (J5)
 - Neurosurgery Call Room 173 sq ft. (F5)
 - Pediatric Administration 17487 sq ft. (C8)
 - Pediatric Cardio 240 sq ft. (C5)
 - Pediatric Clinic 14259 sq ft. (G8)
 - Perfusionist 151 sq ft. (E5)
 - Rapid Response Team 372 sq ft. (I5)
 - Speech Pathology 1121 sq ft. (D5,C4)
 - Surgery Trauma 381 sq ft. (H5)

A B C D E F G H I J K L

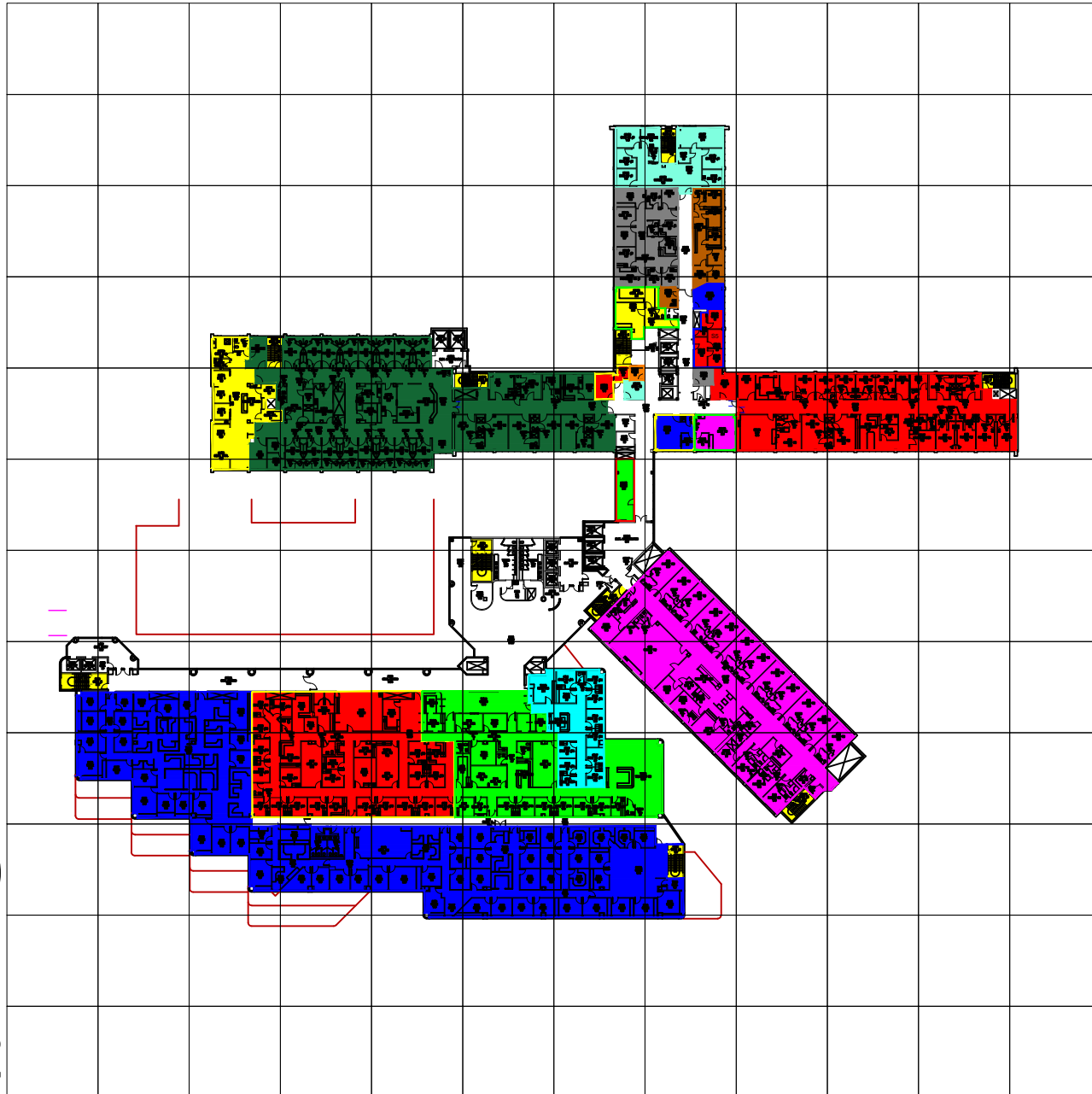
1
2
3
4
5
6
7
8
9
10
11
12



- Key- 4th Floor**
- Burn/Trauma Inpatient 6200 sq ft. (I5)
 - Department of Obstetrics and Gynecology OB/GYN 11480 sq ft. (F10)
 - Employee Lactation Station 180 sq ft. (G5)
 - General Inpatient Surgery (SAC) 12487 sq ft. (F5)
 - General Surgery 755 sq ft. (B9)
 - Inpatient Pharmacy 4371 sq ft. (H4)
 - Internal Medicine 1879 sq ft. (C10)
 - Outpatient and Discharge Pharmacy 1196 sq ft (F7)
 - Pediatrics 1652 sq ft. (D10)
 - PFT Rooms 250 sq ft. (G5)
 - Pharmacy Administration 1950 sq ft. (G3)
 - Pulmonary Lab 834 sq ft. (H5)
 - Surgical Specialties 8720 sq ft. (H7)
 - Urogynecology 2207 sq ft. (C8)
 - Women's Health Clinic 10936 sq ft. (E8)
 - Women's Imaging and Pre-Natal Genetics 2461 sq ft. (B8)

A B C D E F G H I J K L

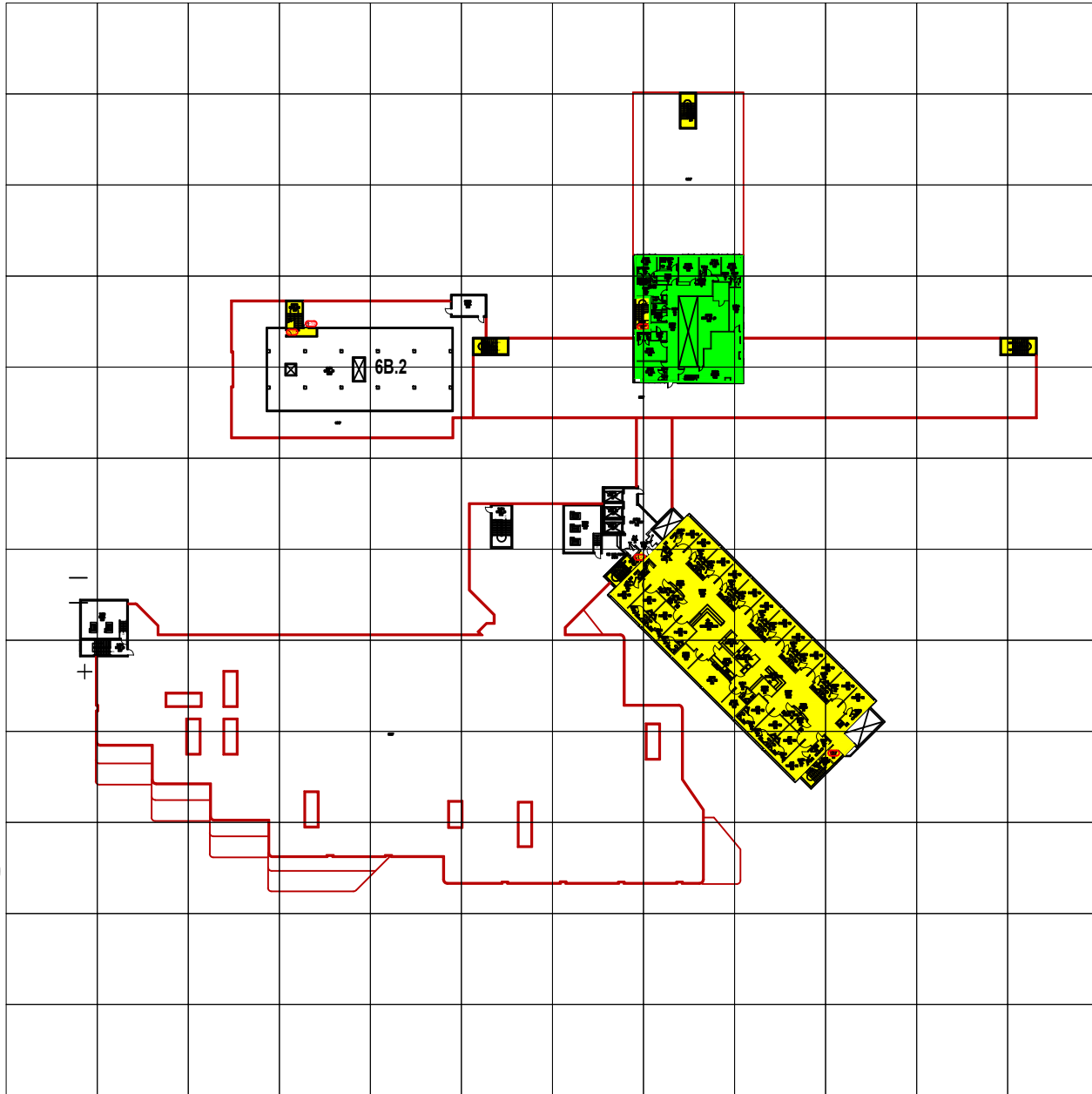
1
2
3
4
5
6
7
8
9
10
11
12



- Key- 5th Floor**
- Adult Oncology 6366 sq ft. (I5)
 - Audiology 981 sq ft. (H3)
 - Cardiology 7,369 sq ft. (G5,D8)
 - Dialysis 1797 sq ft. (C5)
 - Faculty Clinic Diabetes Outpatient Treatment Center (OTC) 2000 sq ft. (G8)
 - General Medicine 10,546 sq ft. (F5)
 - Inpatient Education Center 635 sq ft. (G4)
 - Internal Medicine 16,906 sq ft. (H5,B8)
 - Medical Specialties 5855 sq ft. (F8)
 - Neurodiagnostic Lab 1878 sq ft. (G5,H2)
 - Neuroscience 8719 sq ft. (H7)
 - Newborn Hearing and Screening 431 sq ft. (H5)
 - Patient Transport 332 sq ft. (G6)
 - Pulmonary 408 sq ft. (G6)
 - Rehabilitation Services 59 sq ft. (G5)

A B C D E F G H I J K L

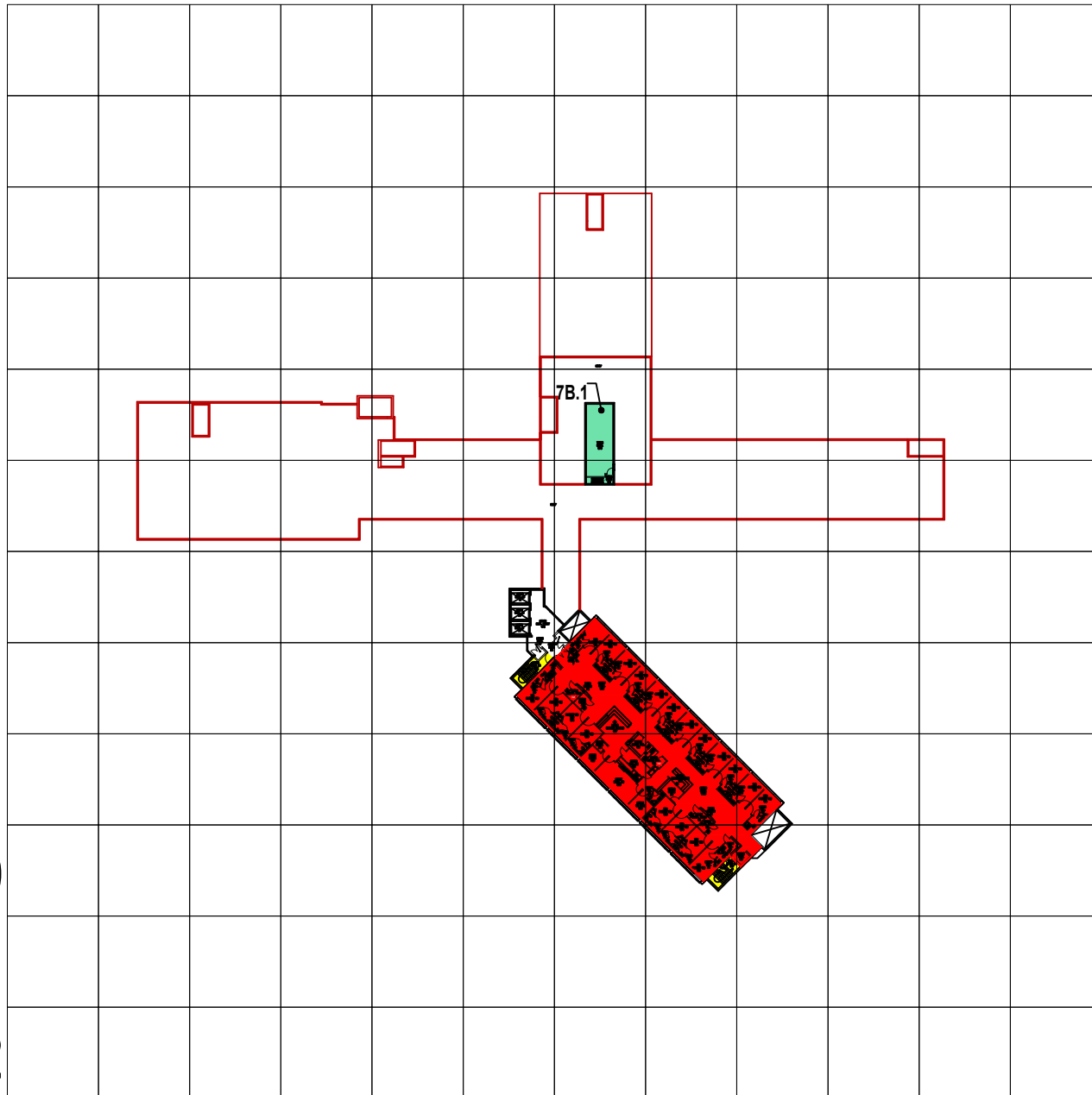
1
2
3
4
5
6
7
8
9
10
11
12



Key- 6th Floor
■ Call Room 3885 sq ft. (H4)
■ General Surgery Transplant (SAC) 8630 sq ft. (H7)

A B C D E F G H I J K L

1
2
3
4
5
6
7
8
9
10
11
12



Key- 7th Floor
■ Cardiology 8630 sq. ft. (G8)