

COLLEGE OF PHARMACY UNIVERSITY OF NEW MEXICO MARCH 2007

History

The University of New Mexico College of Pharmacy was founded in 1945 as the first health professional college and degree program in New Mexico. The pharmacists of the state initially submitted formal requests for the establishment of the College to the New Mexico Legislature as early as 1940.

The first dean of the College of Pharmacy was Dr. Roy A. Bowers. Dr. Bowers also served as the sole faculty member for the first year of the college's existence. At first, the College was housed in a room in the Science Lecture Hall and later acquired space in the old Chemistry Building. In 1948, the College moved into new quarters on the main campus, which it occupied until 1975 (now called the Biology Annex) when it was relocated into a new building at the Health Sciences Center.

In 1951, Dean Bowers resigned and was succeeded by Dr. Elmon L. Cataline. Dean Cataline headed the College for eighteen years until his retirement in 1969. Upon Dean Cataline's retirement, Dr. Kenneth H. Stahl served as Acting Dean for one year. In 1970, Dr. Carmen A. Bliss joined the College, becoming the third dean in the college's history. Dean Bliss retired in 1986 at which time William M. Hadley, a professor of pharmacology and toxicology at the University of New Mexico College of Pharmacy was selected to be Dean of the College, a position he held until his retirement in 2002. Dr. John A. Pieper was named Dean and Professor in November 2002.

Since 1949, the year of the first graduating class, the College of Pharmacy has graduated over 2,500 pharmacists and 70% of all practicing pharmacists in New Mexico are UNM alumni (950/1400). Alumni of the College serve the health care needs in 31 of New Mexico's 33 counties.

The UNM College of Pharmacy is the only pharmacy school in the state, one of 100 nationally, is accredited through June 2009 by the Accreditation Council for Pharmaceutical Education. The College enrolls the most ethnically diverse student body of any school of pharmacy in the US and enrolls the second highest percentage of Hispanic and Native American student pharmacists of any US pharmacy school.

Vision and Mission

Our vision is to be the premier college of pharmacy, recognized for excellence, leadership, and innovation in pharmaceutical education and research.

The mission of the College of Pharmacy is to develop innovative leaders in pharmaceutical care and research who enhance the quality of life for the people of New Mexico and the United States.

COLLEGE OF PHARMACY STRATEGIC PLAN 2005-2010

Approved by Faculty, June 2005

GOAL 1: Provide accessible, highest quality, patient focused, efficient inpatient, ambulatory and community-level health care

- 1.1 Increase/support the availability of high quality pharmaceutical care in rural communities
- 1.2 Increase and support the availability of high quality residencies/fellowships in New Mexico

GOAL 2: Provide New Mexicans innovative, high quality education programs within the College of Pharmacy

- 2.1 Ensure COP graduates (PharmD, MS, PhD) are competent professionals in their chosen field
- 2.2 Effectively provide academic support services to optimize student success

GOAL 3: Advance the foundation of knowledge in pharmacy and pharmaceutical sciences

- 3.1 Promote and expand a culture that encourages and values research endeavors across disciplines
- 3.2 Appropriately and effectively reward research endeavors

GOAL 4: Provide efficient, leading edge, effective infrastructure, facilities, and management systems to advance and support education, research and clinical care

- 4.1 Initiate structural changes to improve efficiency of operations of College, enhance faculty and staff development and increase communications among our communities
- 4.2 Develop and implement a facilities plan for the College of Pharmacy
- 4.3 Ensure College of Pharmacy meets or exceeds ACPE accreditation standards
- 4.4 Expand resources to meet objectives and strategies of strategic plan

GOAL 5: Foster the economic and social contribution of COP to health care in New Mexico

- 5.1 Facilitate pharmacist in New Mexico to obtain provider status
- 5.2 Cultivate partnerships that promote economic/social benefits to UNM and NM

COLLEGE OF PHARMACY ACTION PLAN FY 2007

Education

Goal 1. The College's Assessment Task Force will develop and implement a comprehensive programmatic and student learning outcomes assessment plan for the College by June 30, 2007.

Goal 2. The College will secure legislative funding for the UNM/NMSU Cooperative Pharmacy Program.

Objective 1. State allocation for program during 2007 state legislative session

Objective 2. Initiate program for fall '08 enrollment of first NMSU students

Goal 3. The College will complete renovation of NRPH 39 and NRPH 97 for new pharmaceutical care laboratories required for new curriculum.

Objective 1. Funding from Walgreens secured by July 1, 2006

Objective 2. Construction finished by December 31, 2006

Goal 4. Doctor of Pharmacy students will maintain an academic progression rate of >95% (i.e. >95% of students will progress on time through the curriculum).

Objective 1. Continue to track academic progress

Objective 2. Continue to offer a spectrum of tutoring programs

Goal 5. Graduating Doctor of Pharmacy students will have a National Association of Boards of Pharmacy Licensing Exam (NABPLEX) pass rate of >95%.

Objective 1. Continue to monitor pass rates and provide feedback and assessment to the Assessment Task Force.

Research

Goal 1. The College will establish a supplemental compensation plan for faculty by December 1, 2006.

Goal 2. The College will increase total contract and grant funding by 10% for FY '07 compared to FY '06.

Objective 1. Formalize Research Strategic Planning Committee as a College Standing committee and add a Translational Research Subcommittee by August 1, 2006

Objective 2. Focus August retreat on goals, objectives, strategies and tasks to meet research goals for FY '07

Service

Goal 1. The College will finalize recruitment of a co-funded faculty position and re-establish a clinical ambulatory practice with Walgreen's Patient Care Center.

Objective 1. Recruit new faculty member to COP/Walgreen's Patient Care Center by September 1, 2006

Administration

Goal 1. The College will secure financial stability for the New Mexico Center for Isotopes in Medicine

Objective 1. Identify state legislative sources for support by April 30, 2007

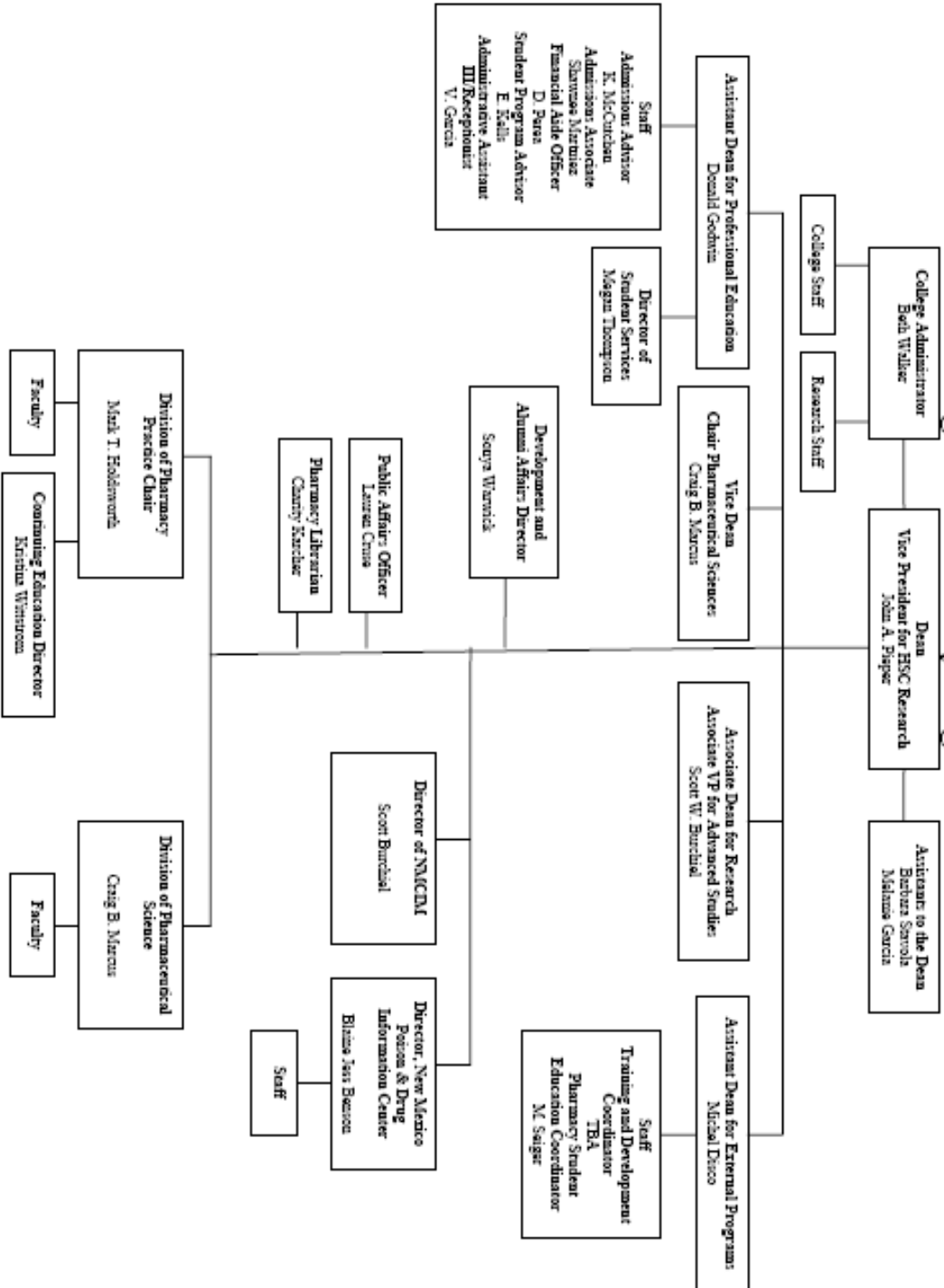
Objective 2. Obtain recognition of the Center as a UNM priority for FY '07 and FY '08

Goal 2. The College will develop a new departmental structure.

Objective 1. Finalized departmental structure approval to UNM Faculty Senate by November 30, 2006

Objective 2. Full implementation of academic departments by January 1, 2007

UNM College of Pharmacy Organizational Chart



John A. Pieper, Pharm.D., FCCP
Professor and Dean
College of Pharmacy

Vice President for Research
University of New Mexico
Health Sciences Center
jpieper@salud.unm.edu



BA Degree. 1974, University of Colorado, Biology, Boulder, Colorado;
B.S. Pharmacy Degree with Honors. 1977 University of Wyoming, Laramie, Wyoming;
Pharm.D. Degree. 1979, School of Pharmacy, State University of New York at Buffalo, Buffalo, New York;
Post-Doctoral Fellow. 1981, School of Pharmacy, State University of New York at Buffalo, Buffalo New York.

Current positions:

Dean and Professor, College of Pharmacy, University of New Mexico Health Sciences Center

Vice President for Research, University of New Mexico Health Sciences Center

Immediate past positions:

Professor and Chairman, Division of Pharmacotherapy, School of Pharmacy, University of North Carolina, Chapel Hill, North Carolina, (1994-2002);

Associate Professor and Chairman, Department of Pharmacy Practice and Associate Dean, School of Pharmacy, University of Colorado Health Sciences Center, Denver, Colorado, (1988-1994).

Over 90 papers published in referred journals in the area of pharmacokinetics and genomic determinants of metabolism of cardiovascular drugs; 100 scientific abstracts presented; 15 post-doctoral fellows trained; completed three Ph.D. and two M.S. students; Outstanding Dean in US Pharmacy Schools, 2006 American Pharmacy Association-Academy of Student Pharmacists; Chair, Bylaws and Policy Development Committee American Association of Colleges of Pharmacy 2004-present; Member, Commission on Credentialing of Pharmacy Residencies in the US American Society of Health System Pharmacists 2004-present; Post-Doctoral Fellowship Selection Committee American Foundation for Pharmaceutical Education, 2000-present; Dean's Advisory Committee National Association of Chain Drug Stores, 2004-present, Chair American Association of Colleges of Pharmacy Department Chairs Group, 1998-1999; President, American College of Clinical Pharmacy 1993-94; Vice Chair, Pharmacokinetics, Pharmacodynamics and Drug Metabolism Section American Society for Clinical Pharmacology and Therapeutics, 1987-88.

Description of Educational Programs

During the 2005-2006 academic year, there were 396 students enrolled in four major academic programs: 323 Doctor of Pharmacy students, 47 non-traditional Doctor of Pharmacy students, 7 MS in Pharmaceutical Sciences (Toxicology and Pharmacy Administration) students and 19 students in the Ph.D. in Biomedical Sciences (Toxicology) program.

Professional Degree: (Doctor of Pharmacy (Pharm.D.))

The Doctor of Pharmacy (Pharm.D.) program, approved by the UNM Board of Regents and New Mexico Commission on Higher Education in 1995, is the sole professional degree offered by the College and consists of a four year curriculum. Admission to the four year Doctor of Pharmacy program requires completion of 64 semester hours of pre-requisite coursework. The average entering student requires 3.5 academic years to complete the 64 semester hours of prerequisites. Prerequisite courses may be completed at the University of New Mexico or at any two- or four-year college.

To be considered for admission to the Doctor of Pharmacy program, students must complete a minimum of 64 semester hours of pre-pharmacy coursework, and maintain a 2.7 minimum GPA in all required courses. Completion of the PCAT (Pharmacy College Admission Test) examination, PharmCAS (Pharmacy College Application Service online application), three letters of recommendation and College of Pharmacy supplemental application, including a personal photograph, and appropriate supplemental application fee are required.

Admissions Statistics

Year	Total Applicants	Qualified Applicants	Applicants Interviewed	Offered Admission	Students Admitted	Percent of Qualified Applicants Admitted
2003	354	283	140	90	80	28%
2004	736	476	153	97	81	17%
2005	1307	930	169	94	84	9%
2006	1592	1084	203	99	84	8%

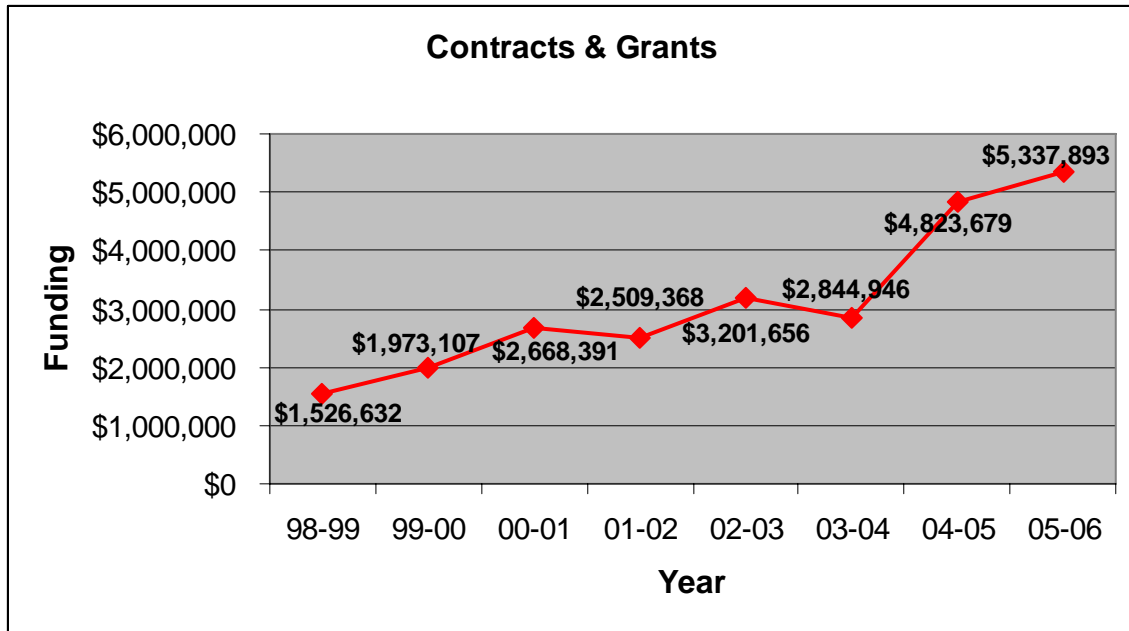
The Doctor of Pharmacy curriculum is 134 semester hours over 4 years. The patient-centered curriculum prepares students to provide health care in the 21st century. The College of Pharmacy initiated a revised curriculum in Fall 2006 that is modeled on the best Pharm.D. curricula in the country. This revised curriculum progresses the students from basic pharmaceutical science foundations of pharmacy practice to the more patient oriented knowledge and skills of pharmacy practice. A constant throughout the Pharm.D. curriculum is our Pharmaceutical Care Laboratory which integrates the material being presented in didactic lectures and allows our students to participate in hands on activities to provide them with the attitudes and skills needed to practice pharmacy in contemporary health care settings.

Graduate Degrees

In addition to the Pharm.D., a Master of Science (M.S.) in Pharmaceutical Sciences with concentrations in Pharmacoeconomic, Pharmaceutical Policy and Outcomes Research (PPPOR), Radiopharmacy, and Toxicology is offered with 7 students currently enrolled.

The Doctor of Pharmacy (Ph.D.) in Pharmaceutical Sciences is offered with a concentration in Pharmacoeconomic, Pharmaceutical Policy and Outcomes Research (PPPOR), toxicology and planned programs in pharmaceuticals (in collaboration with College of Engineering) and medicinal chemistry (in collaboration with College of Arts and Sciences). Current enrollment in Ph.D. programs totals 19.

Description of Research Programs



The College currently ranks 40th among the US schools/colleges of pharmacy in NIH funding and 37th in funding per Ph.D. faculty member.

The Research Strategic Planning Committee (RSPC) of the College of Pharmacy in 2006 identified three signature programs:

New Mexico Center for Environmental Health

- COP Participation: COP PI (Burchiel) Involves 18 COP faculty/staff
- National Reputation – 1 of 22 NIEHS Core Centers in US
- \$1.0M/yr direct costs P30 grant; \$18M/yr annual direct costs research core member funding
-

Neurologic Disease and Detection Program

- 8 COP faculty/staff
- National Reputation – 1 of 22 COBRE Centers in US
- \$1.5M/yr direct costs COBRE grant; >\$2M/yr annual direct costs member funding

New Mexico Center for Isotopes in Medicine

- 4 COP faculty and staff
- National Reputation – Radiopharmacy Program at UNM and new LANL Isotopes Production Facility (IPF)
- Partnership with Cancer Research and Treatment Center to obtain \$1.03 Keck Grant
- Three (3) successful JSTL Proposals with LANL (\$250K)
- Partnership with Bioscan (\$300K) for Nanospect application development
- TRC \$350K Ga68 grant and partnership with GE
- Los Alamos National Lab funding of the New Mexico Consortium/Institute of Advanced Studies

Description of Clinical and Outreach Programs

The New Mexico Poison and Drug Information Center of the College of Pharmacy provides poison information for the public and health care institutions as well as drug information support for health professionals in the state. All services are provided 24 hours a day. Approximately 45,000 calls are received by the Center annually. The Center is certified as a Regional Poison Center by the [American Association of Poison Control Centers](#) signifying national recognition. The New Mexico Poison and Drug Information Center is funded as a Special Project through the New Mexico Legislature and is a major teaching site for College of Pharmacy Doctor of Pharmacy students and School of Medicine Doctor of Medicine students and Emergency Department residents.

Cooperative education, research and service programs exist between the College and University of New Mexico Hospitals, Presbyterian Hospital, Lovelace Health Care System, New Mexico Veterans Administration Health System, USPHS Albuquerque Indian Hospital, the State Hospital in Las Vegas, New Mexico and 200 clinical sites around the state and region.

Major Accomplishments, National recognition (Past 3-5 Years)

- Pharm.D. program ranked 46th by U.S. News and World Report, 2005.
- American Pharmacists Association-Academy of Student Pharmacists (APhA-ASP) Outstanding Dean-John A. Pieper, 2006-2007.
- Jennifer Short - first UNM College of Pharmacy student to hold a national office as Speaker of the House, for the American Pharmacists Association-Academy of Student Pharmacists, 2005-2006
- UNM-COP has held two of the three positions for regional office for APhA-ASP for three years in a row, the first time in the 40 year history of APhA-ASP.
- New Mexico Center for Environmental Health Sciences (NIEHS) Center- one of 23 NIEHS Centers in the United States.
- New Mexico Center for Isotopes in Medicine (NMCIM)-birthplace of commercial radiopharmacy as part of the UNM Health Sciences Center.

Challenges

- Reformat the delivery of our factual-based lecture material in professional and graduate programs to an active-learning format (synchronous/asynchronous digital streaming).
- Maintain adequate salaries for faculty and poison specialists at a time of escalating pharmacists salaries.
- Development of a clinical pharmaceutical scientist program in collaboration with the top 25-30 schools of pharmacy in the US.
- Funding for New Mexico Center for Isotopes in Medicine (NMCIM) and our other signature programs in an environment of shrinking federal funds.

Demographics of Faculty, Staff and Students

Doctor of Pharmacy Students

	Overall Student Body
Number of Students	323
Student Ages	
Average Age	27.64
Age Range	19 – 56
Gender	
Male	34%
Female	66%
Ethnicity	
Asian	10%
Black	2%
Hispanic	33%
Native American	6%
White	49%
Average pre-requisite GPA	3.33
Students holding previous degrees	31%
In state residency	88%
Graduated from NM high school	72%

Graduate Students

Degree	Current Number of Students
M.S. in Pharmacoeconomic, Pharmaceutical Policy and Outcomes Research	3
M.S. in Toxicology	4
M.S. in Radiopharmacy	0
Ph.D. Pharmacoeconomic, Pharmaceutical Policy and Outcomes Research	3
Ph.D. in Toxicology	16

