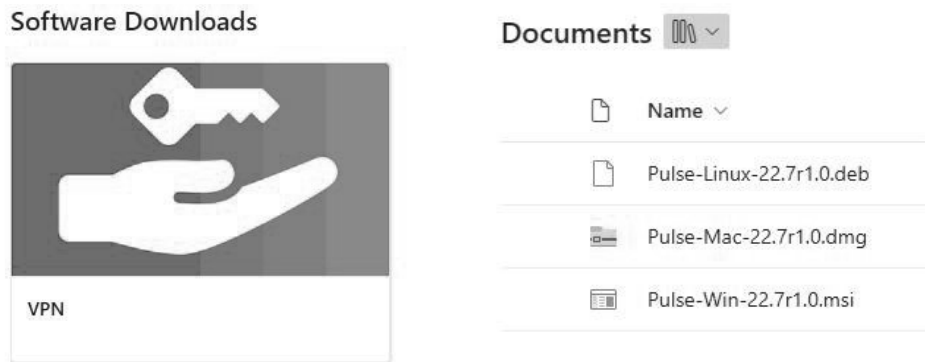
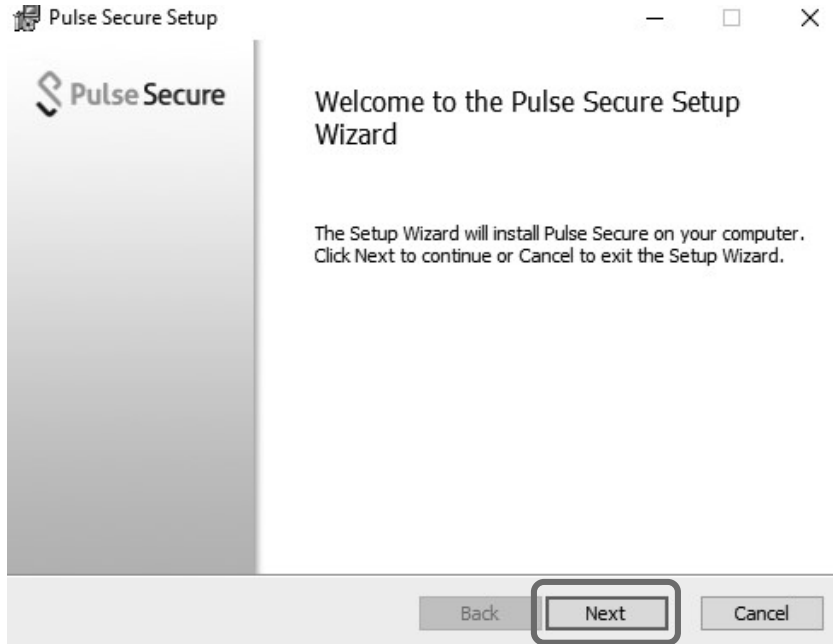

Pulse VPN Instructions for Windows

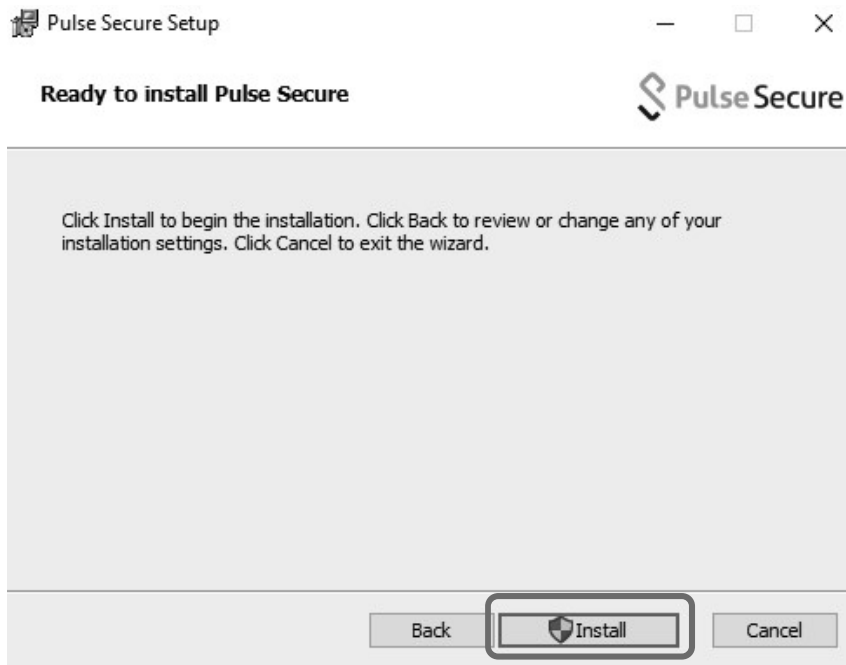
1. Go to <https://unmhsc.sharepoint.com/sites/UNMHealthSoftwareDownloads> and download and run the installer for your operating system.



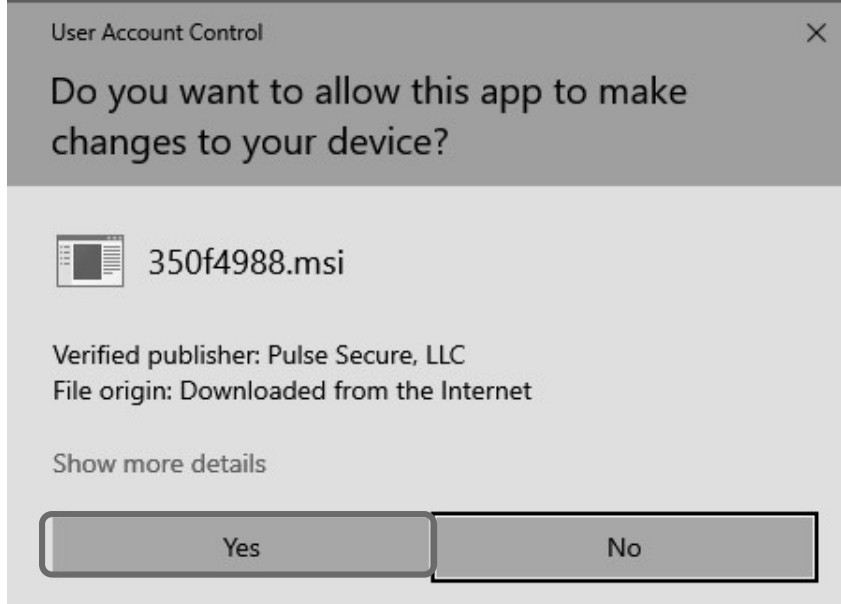
2. Run the install, and click next.



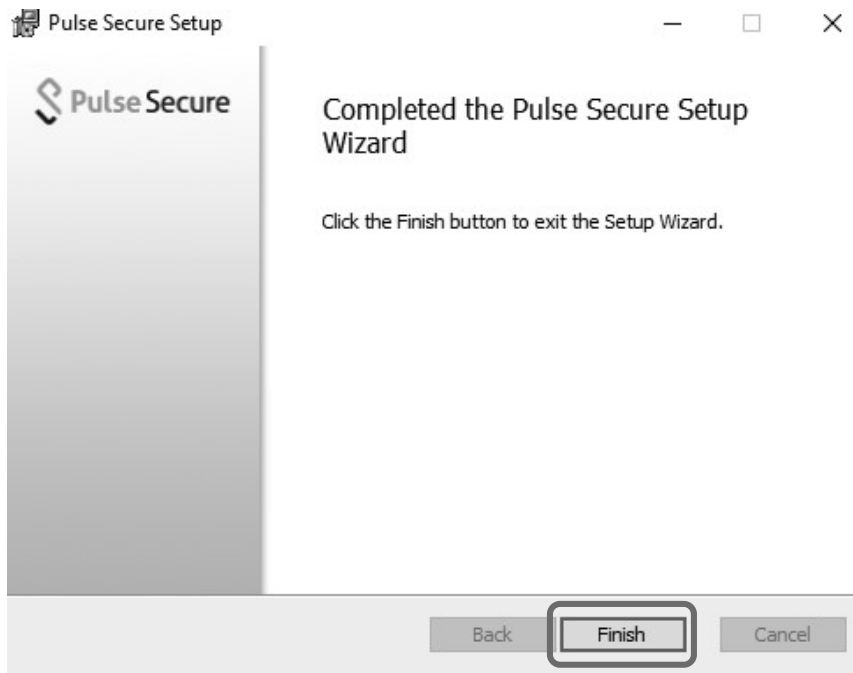
3. Click Install.



4. If you have User Account Control enabled, click Yes.



5. Click Finish.



6. Open Pulse Secure and Click + to add a connection.



7. Enter the information below and click Add.

Add Connection [X]

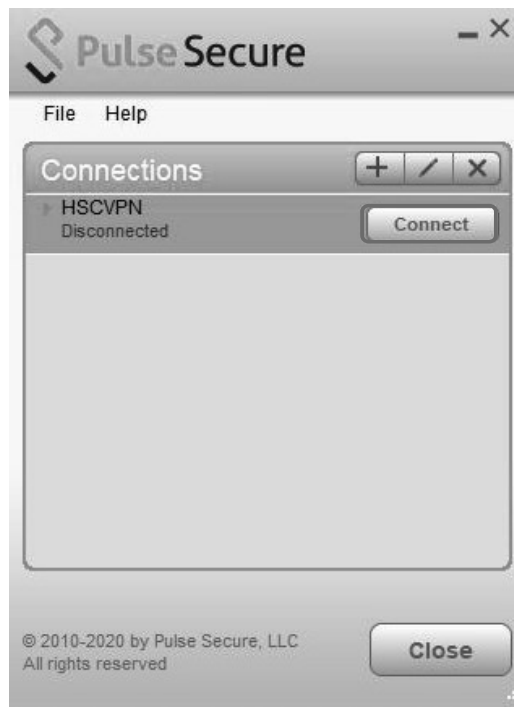
Type:
Policy Secure (JAC) or Connect Secure (VPN) [v]

Name:
HSCVPN ←

Server URL:
unmhs-vpn.health.unm.edu ←

[Connect] [Add] [Cancel]

8. Click Connect.



9. You will be prompted to login to Pulse VPN. Login using your HSC NetID and password.



The screenshot shows the Pulse Secure login interface. At the top, there is a header with the Pulse Secure logo and the text "Pulse Secure". Below the header, the text "Welcome to the Pulse Connect Secure" is displayed. Underneath, there are two input fields: "username" and "password". To the right of these fields, the text "Please sign in to begin your secure session." is visible. Below the input fields, there is a "Sign In" button.

10. You may be prompted for Microsoft Multi-factor Authentication.

If you have not setup Microsoft MFA yet, then you will need to do that following the instructions at <https://hsc.unm.edu/about/cio/technology-support/microsoft-365.html>

11. You are now connected. To disconnect your session, click Disconnect.

