
Pulse VPN Instructions for Windows

1. Login to https://hospitals.health.unm.edu/intranet7/apps/vpn_client/ , click PulseSecure_VPN_Client (.msi).

Windows

- [PulseSecure VPN Client \(.msi\)](#)

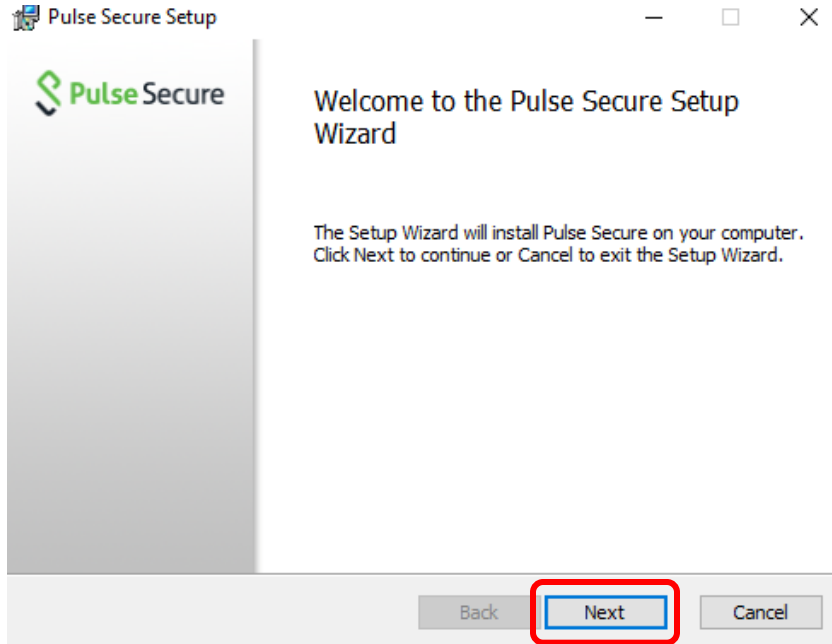
Apple Mac

- [PulseSecure VPN Client \(.dmg\)](#)

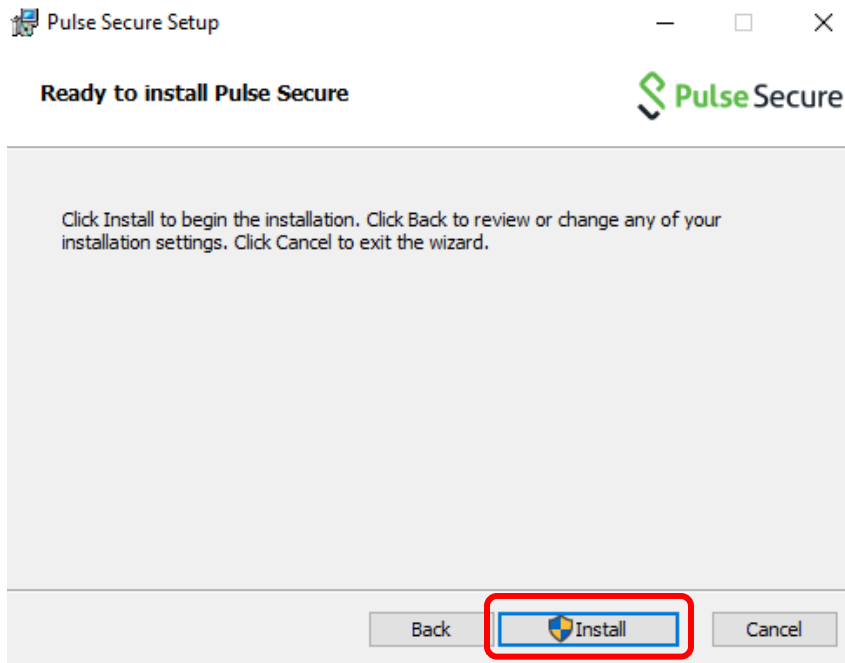
Linux

- [Ubuntu/Debian PulseSecure VPN Client \(.deb\)](#)
- [Redhat/Centos PulseSecure VPN Client \(.rpm\)](#)

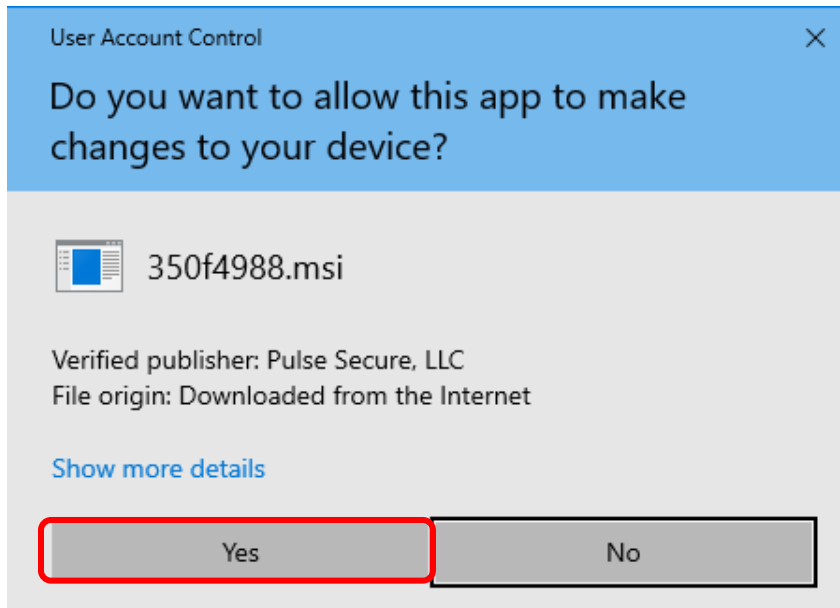
2. Run the install, and click next.



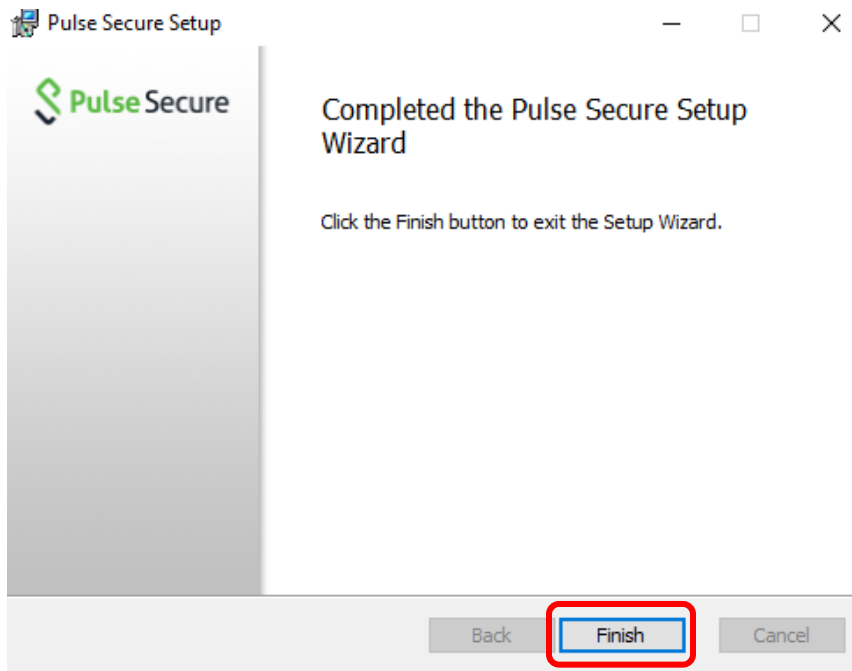
3. Click Install.



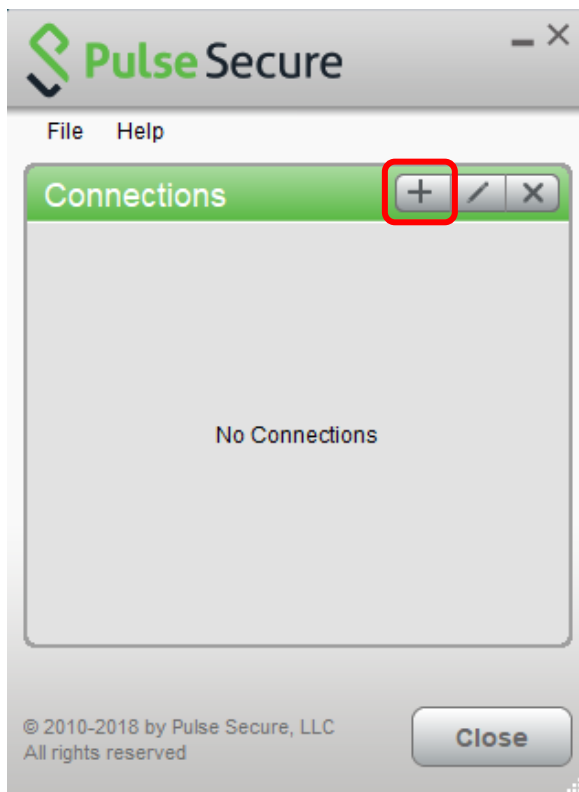
4. If you have User Account Control enabled, click Yes.



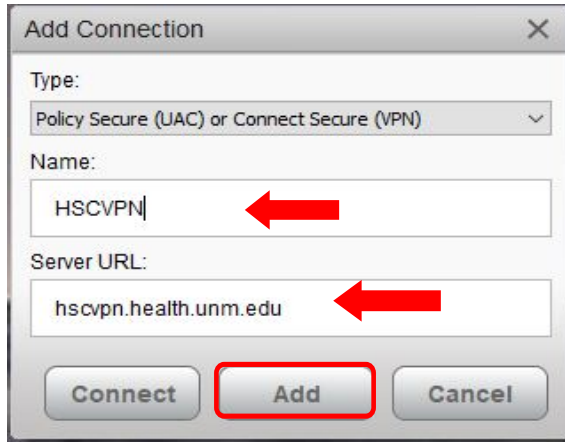
5. Click Finish.



6. Open Pulse Secure and Click + to add a connection.

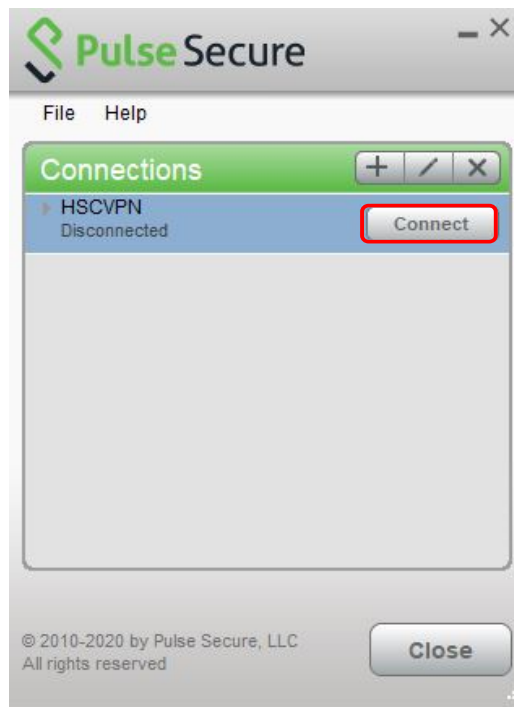


7. Enter the information below and click Add.



The screenshot shows the 'Add Connection' dialog box. The 'Type' dropdown is set to 'Policy Secure (JAC) or Connect Secure (VPN)'. The 'Name' text box contains 'HSCVPN' with a red arrow pointing to it. The 'Server URL' text box contains 'hscvpn.health.unm.edu' with a red arrow pointing to it. At the bottom, the 'Add' button is highlighted with a red rectangular box, while 'Connect' and 'Cancel' buttons are not.

8. Click Connect.



9. You will be prompted to login to Pulse VPN. Login using your HSC NetID and password.



The screenshot shows the Pulse Secure login interface. At the top left is the Pulse Secure logo. Below it, the text reads "Welcome to the Pulse Connect Secure". There are two input fields: "username" and "password". To the right of these fields is the instruction "Please sign in to begin your secure session." Below the input fields is a "Sign In" button.

10. You may be prompted for Microsoft Multi-factor Authentication.

If you have not setup Microsoft MFA yet, then you will need to do that following the instructions at <https://hsc.unm.edu/about/cio/technology-support/microsoft-365.html>

11. You are now connected. To disconnect your session, click Disconnect.

