

Bone Health TeleECHO™

Find the Bone TeleECHO Program that Fits Your Schedule

(All programs in English unless otherwise specified)

Last updated June 23, 2021. Dates and times may change according to holidays and local needs.

MONDAY

Opportunity for starting a new Bone TeleECHO program.

TUESDAY

Bone Health TeleECHO – 1.5 Hours

Weekly, 12:00 to 1:30 PM Mountain Time

Director: E. Michael Lewiecki, MD

Contact: BoneHealthECHO@salud.unm.edu

Registration: www.ofnm.org

The Ehlers-Danlos Society TeleECHO – 1.5 Hours

Weekly for 9-week programs, 12:00 to 1:30 PM Greenwich Mean Time

Directors: Lara Bloom; Alan Hakim, MA, FRCP; Clair Francomano, MD

Registration: www.ehlers-danlos.com/echo/

WEDNESDAY

Bone Health TeleECHO Moscow – 1.25 Hours

Monthly, last Wednesday, 12:00 to 1:15 PM Moscow Time

Language: Russian

Director: Zhanna Belaya, MD, PhD

Contact: jannabelaya@gmail.com

Osteogenesis Imperfecta TeleECHO – 1 Hour

Monthly, 2nd Wednesday, 3:00 to 4:00 PM Eastern Time

Director: Frank Rauch, MD

Contact: Michael Stewart at mstewart@oif.org

Registration: www.OIF.org/ECHO

University of Vermont Project ECHO

Osteoporosis Management TeleECHO – 1 hour

Monthly, 3rd Wednesday, 12 to 1:00 PM Eastern Time

Course Director/Moderator: Jennifer Kelly DO,

Jennifer.kelly@uvmhealth.org

ECHO Program Director: Elizabeth Cote, elizabeth.cote@uvm.edu

Web: www.vtahec.org

Registration (closed at this time)

Bone Health TeleECHO: Strides For Strong Bones Spokane - San Diego

Monthly, 1st Wednesday, 5:30 to 6:30 PM Pacific Time

Director: Lynn Kohlmeier, MD

Contact: Marla Emde at info@stridesforstrongbones.org

Website: www.stridesforstrongbones.org

Registration: <https://echo.zoom.us/meeting/register/tJYude-vrjMsG9xJdWcdC3QW1TelZMOad6Th>

THURSDAY

National Osteoporosis Foundation FLS Bone Health TeleECHO – 1 Hour

Monthly, 2nd Thursday, 3:00 to 4:00 PM Eastern Time

Moderator: Anne Lake, DNP

Directors: Ami Patel at ami.patel@nof.org, Andrea Medeiros at

andrea.portillo@nof.org

Registration: <https://bit.ly/2GIKUAA>

Own the Bone Orthopaedic Bone Health TeleECHO – 1.25 Hours

Monthly, 3rd Thursday, 12:00 to 1:15 PM Central Time

Director: Paul Anderson, MD

Contact: Benjamin Grace at grace@aoassn.org

Information: www.ownthebone.org/echo

Registration: <https://www.surveymonkey.com/r/P7V9N7X>

Rare Bone Disease TeleECHO – 1 Hour

Monthly, 1st Thursday, 3:00 to 4:00 PM Eastern Time

Director: Laura Tosi, MD

Contact: Michael Stewart at mstewart@oif.org

Registration: <https://oif.org/echo/>

The Ehlers-Danlos Society TeleECHO – 1.5 Hours

Weekly for 9-week programs, 5:00 to 6:30 PM Eastern Time

Directors: Lara Bloom; Alan Hakim, MA; Clair Francomano, MD

Registration: www.ehlers-danlos.com/echo/

FRIDAY

MNI Great Lakes ECHO LLC – 1 Hour

Monthly, 4th Friday, 11:00 AM to 12:00 PM, Central Time

Director: Avery Jackson III, MD

Contact: Caramarie Brock at cbrock@greatlakes-echo.com or

Rachel Henriques at rhenriques@greatlakes-echo.com

National University of Ireland Galway

Bone Health TeleECHO – 1 Hour

Monthly, 4th Friday, 8:30 to 9:30 AM Greenwich Mean Time

Director: John J. Carey, MD

Contact: John or Helga at bone.health@hse.ie



Moving Knowledge, Not People



+1 (505) 272-6699



bonehealthECHO@salud.unm.edu



<https://echo.unm.edu/teleecho-programs/bone-health>

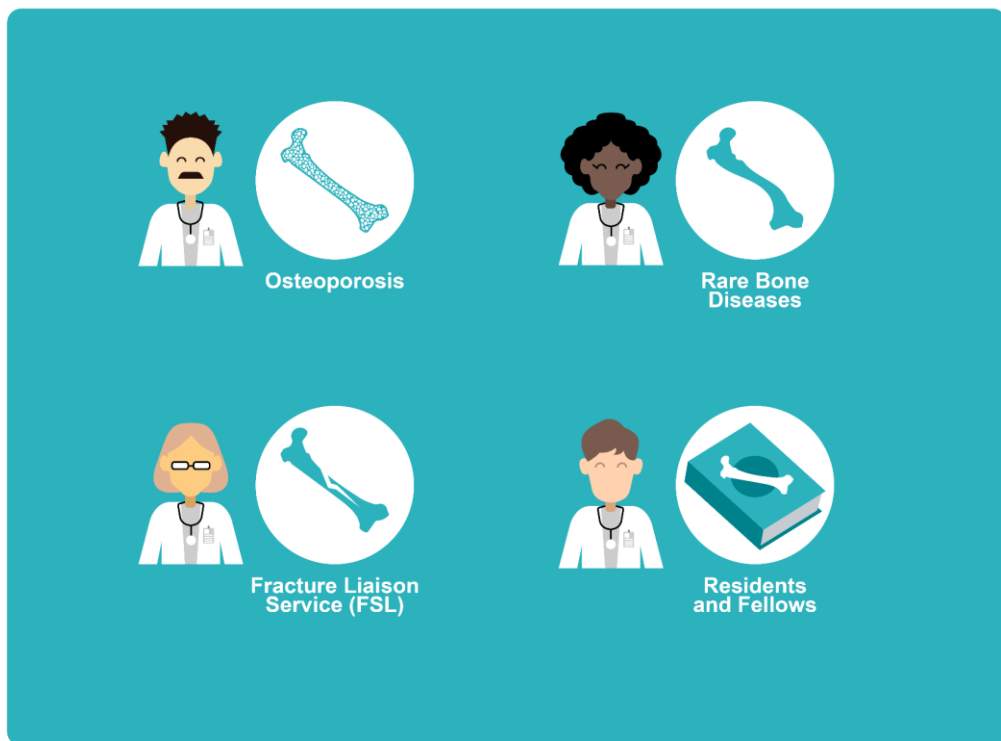


Bone Health TeleECHO™

Healthcare professionals participate in a collegial community of practice to advance skills in the care of patients with skeletal diseases.

The ECHO model™ of interactive learning is highly effective at expanding capacity to deliver best practice medical care worldwide, at the right time and the right language for those who wish to participate.

To learn more about **Joining Bone Health TeleECHO**, watch the video at <https://youtu.be/FHGWnLriGxk>



Moving Knowledge, Not People

<https://echo.unm.edu>

