

COVID 19 Clinical Rounds Critical Care: COVID Patient Long Term Challenges

William Bender MD, MPH

Assistant Professor

Division of Pulmonary, Allergy, Critical Care and Sleep Medicine

Emory University School of Medicine

Site Director for Critical Care

Emory Saint Joseph's Hospital

Emory Critical Care Center



EMORY
UNIVERSITY
SCHOOL OF
MEDICINE

EMORY
HEALTHCARE

I have no financial disclosures

Case Presentation

- 57 year old male
- Type II diabetes mellitus, hyperlipidemia, hypertension, coronary artery disease
- Presenting with fevers, dyspnea and diarrhea
- Multiple sick family contacts
- Prior tobacco use

Case Presentation

- 85% on room air on arrival in ED
- Markedly tachypneic
- COVID nasopharyngeal swab PCR positive
- NRB → HHFNC
- D-Dimer → 1003
- POCUS with unremarkable LV/RV, diffuse B lines and no evidence of DVTs



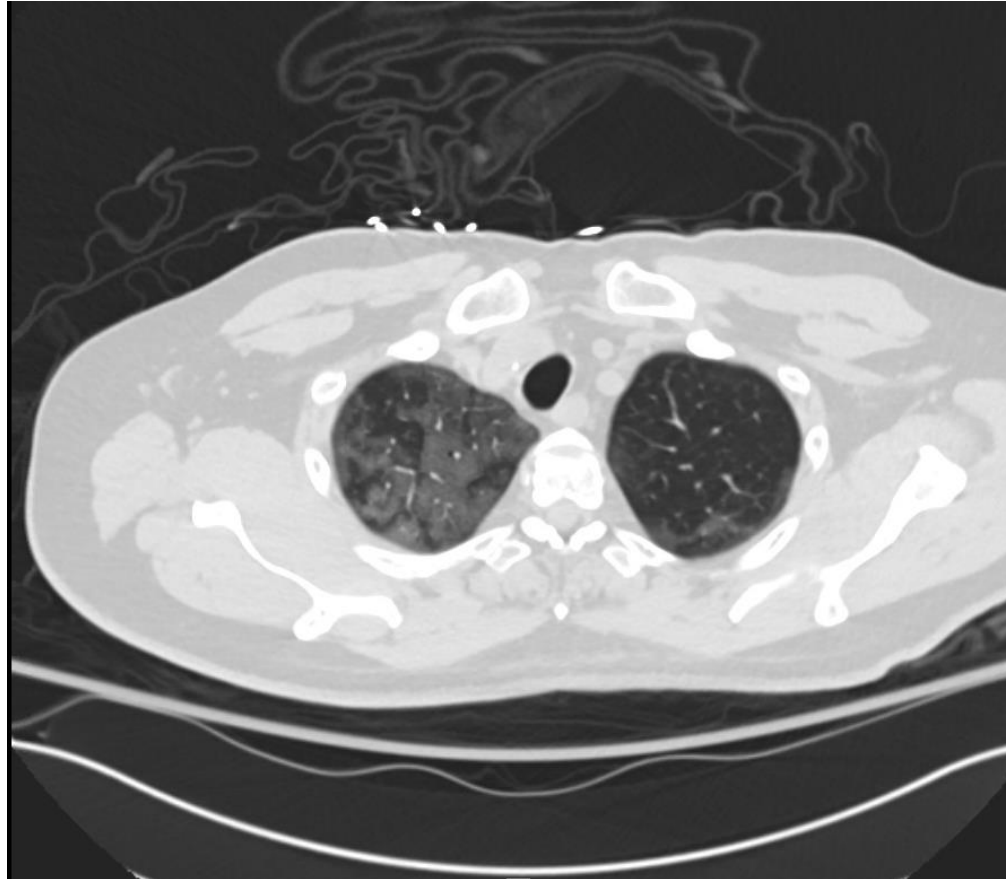
Case Presentation



Case Presentation

- Decadron
- Self proning
- Tier II anticoagulation
- Airway clearance protocol
- Blood glucose management

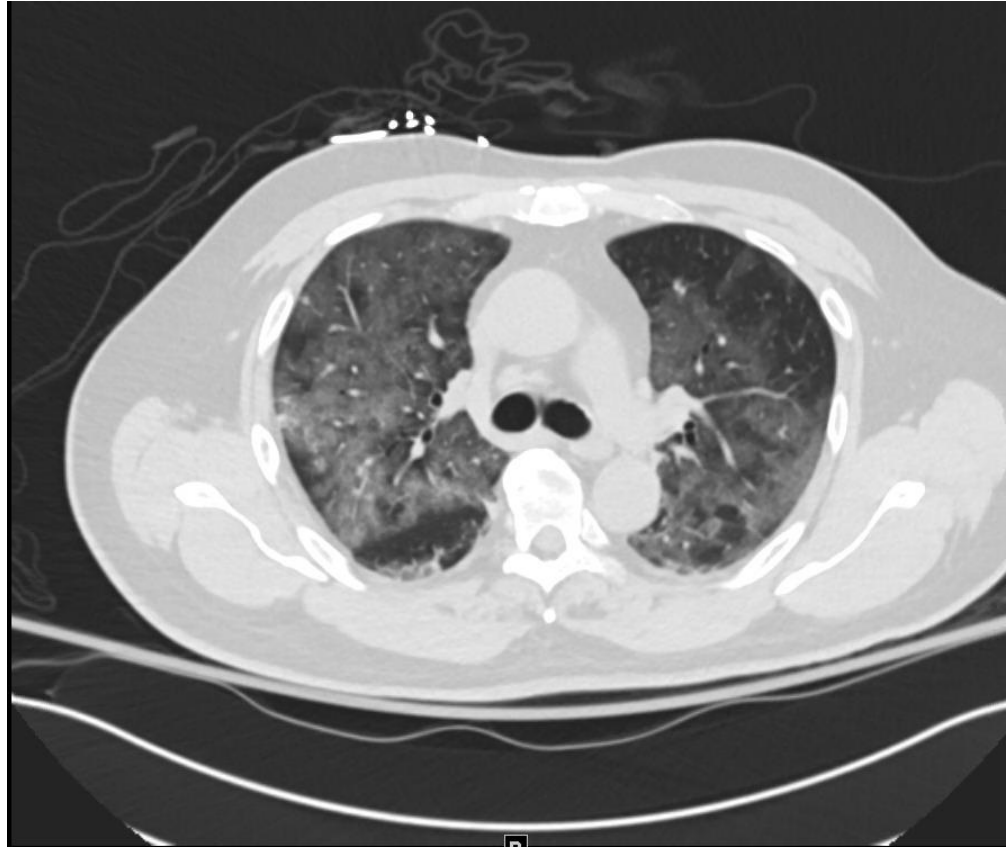
Case Presentation



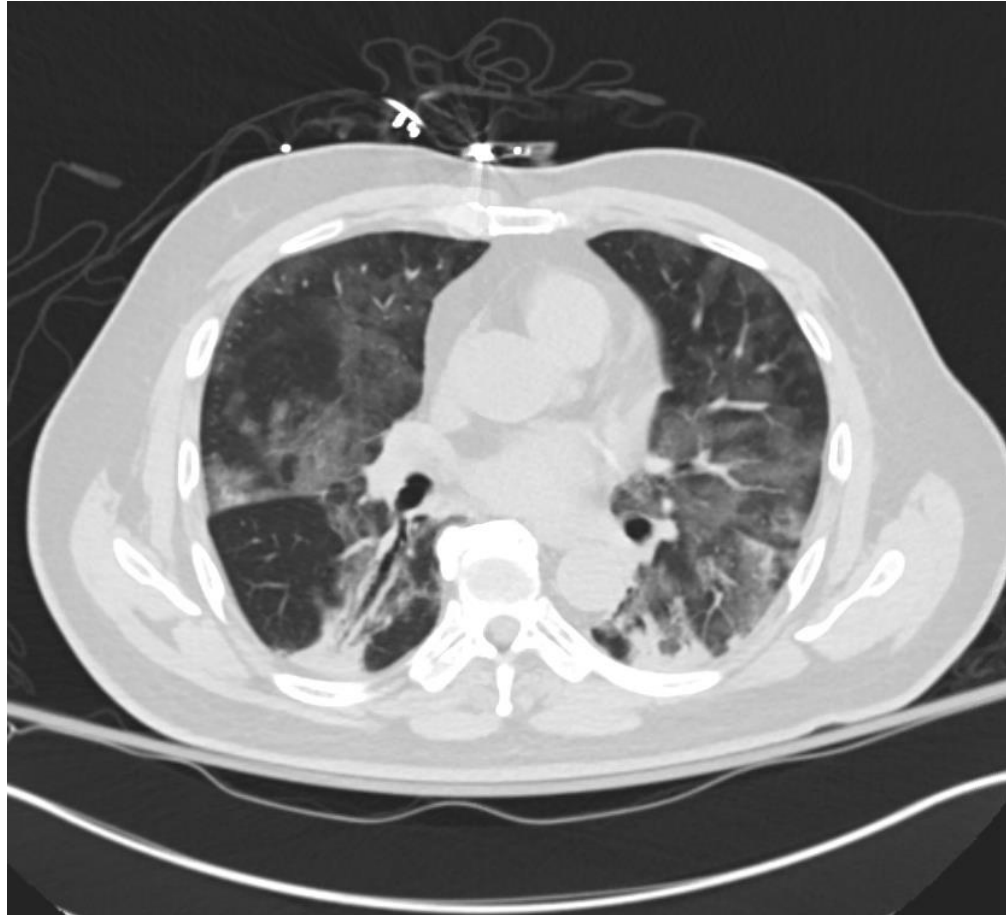
EMORY
UNIVERSITY
SCHOOL OF
MEDICINE

EMORY
HEALTHCARE

Case Presentation



Case Presentation



Case Presentation



EMORY
UNIVERSITY
SCHOOL OF
MEDICINE

EMORY
HEALTHCARE

Case Presentation

- Solu-Medrol → Prednisone taper
- PJP prophylaxis with Bactrim
- Anticoagulation with Eliquis
- Home oxygen
- Discharged home after 27 day stay
- COVID pulmonary clinic follow up

Moving Forward

- What are we actually facing?

Table 1
Baseline and follow-up patient characteristics represented per subgroup (with and without restriction).

Total n = 220	Restriction ^(a) n = 84	No restriction n = 136	p-value
<i>At baseline</i>			
Age (years)	55 (47; 64)	55 (42; 61)	NS
Male	55 (65%)	30 (59%)	NS
BMI (kg m ²)	28.5 (25.5; 32.1)	27.7 (24.6; 31.3)	NS
Diabetes mellitus	19 (23%)	20 (15%)	NS
Arterial hypertension	33 (39%)	42 (31%)	NS
Smoking history (>5 pack years)	15 (18%)	37 (27%)	NS
ICU admission (n)	23 (27%)	18 (13%)	<u>0.009</u>
Invasive mechanical ventilation (n)	8 (10%)	1 (0.7%)	<u>0.001</u>
Days hospitalized (n)	8 (5; 14)	6 (4; 10)	<u>0.003</u>
Max CRP (mg/L)	115 (55; 230)	129 (41; 207)	NS
Max d-dimer (ng/mL)	1253 (624; 2275)	824 (506; 1388)	<u>0.01</u>
Max ferritin (µg/L)	1171 (584; 1783)	895 (442; 1622)	NS
Max LDH (U/L)	885 (707; 1305)	761 (600; 1038)	<u>0.001</u>
Max NT-proBNP (ng/L)	227 (89; 716)	102 (54; 413)	NS
Max Troponin T (µg/L)	0.011 (0.008; 0.015)	0.009 (0.007; 0.012)	<u>0.02</u>
CT score at diagnosis (0–25)	12 (10; 16)	12 (9; 15)	NS
<i>Ten weeks after diagnosis at follow up</i>			
CT score (0–25)	3 (0; 6)	1 (0; 5)	NS
Symptom score	1 (0; 2)	1 (0; 2)	NS
Patients with symptom score ≥1	36 (59%)	49 (36%)	NS
FEV ₁ (z-score) ^(b)	-0.9 (-1.5; -0.3)	0.1 (-0.5; 0.6)	<u><0.001</u>
FVC (z-score) ^(b)	-1.3 (-1.8; -0.8)	-0.1 (-0.5; 0.4)	<u><0.001</u>
FEV ₁ /FVC (z-score) ^(b)	0.8 (0.2; 1.2)	0.2 (-0.3; 0.7)	<u><0.001</u>
TL _{CO} (z-score) ^(c)	-1.2 (-2.2; -0.6)	-0.4 (-1.1; 0.4)	<u><0.001</u>
K _{CO} (z-score) ^(c)	0.5 (-0.5; 1.0)	-0.2 (-0.9; 0.6)	<u>0.0005</u>
TLC (z-score) ^(c)	-2.5 (-3.1; -2.0)	-0.3 (-0.8; 0.3)	<u><0.001</u>
MIP (z-score) ^(d)	-0.2 (-1.2; 0.5)	0.0 (-0.6; 0.6)	<u>0.02</u>
MEP (z-score) ^(d)	-0.8 (-1.4; 0.0)	-0.2 (-0.9; 0.4)	<u>0.001</u>



Moving Forward

- Patient long term needs
 - Medications
 - Chronic oxygen therapy
 - Therapy
 - Clinic connection
- System long term needs
 - Bandwidth
 - Coordination
 - Enthusiasm

