

Improving equity and access to COVID-19 monoclonal antibody treatments

Marta E. Wosińska, Ph.D.
Deputy Director, Consulting Professor

Talk objectives

- Explain the paradox of unused product when # people eligible far exceeds available doses
- Show where progress has been made
- Explain why progress has been unequal
- Describe some opportunities for increasing access and equity

Number of eligible patients exceeds supply

17,530,824 cases reported since Nov 9

835,946 courses allocated since Nov 9



High risk



250K cases or doses

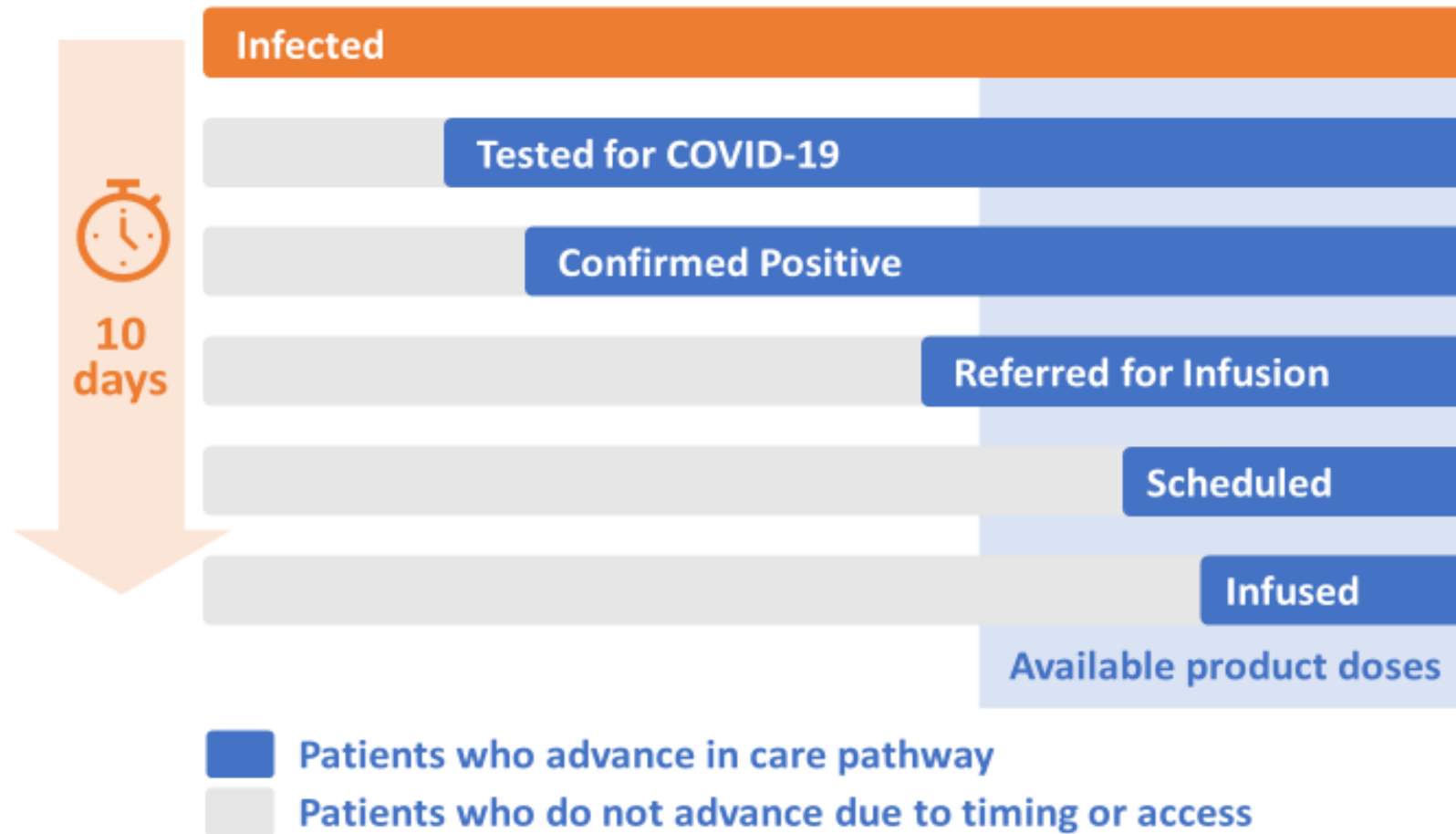


16.5% are ≥ 65 years in age



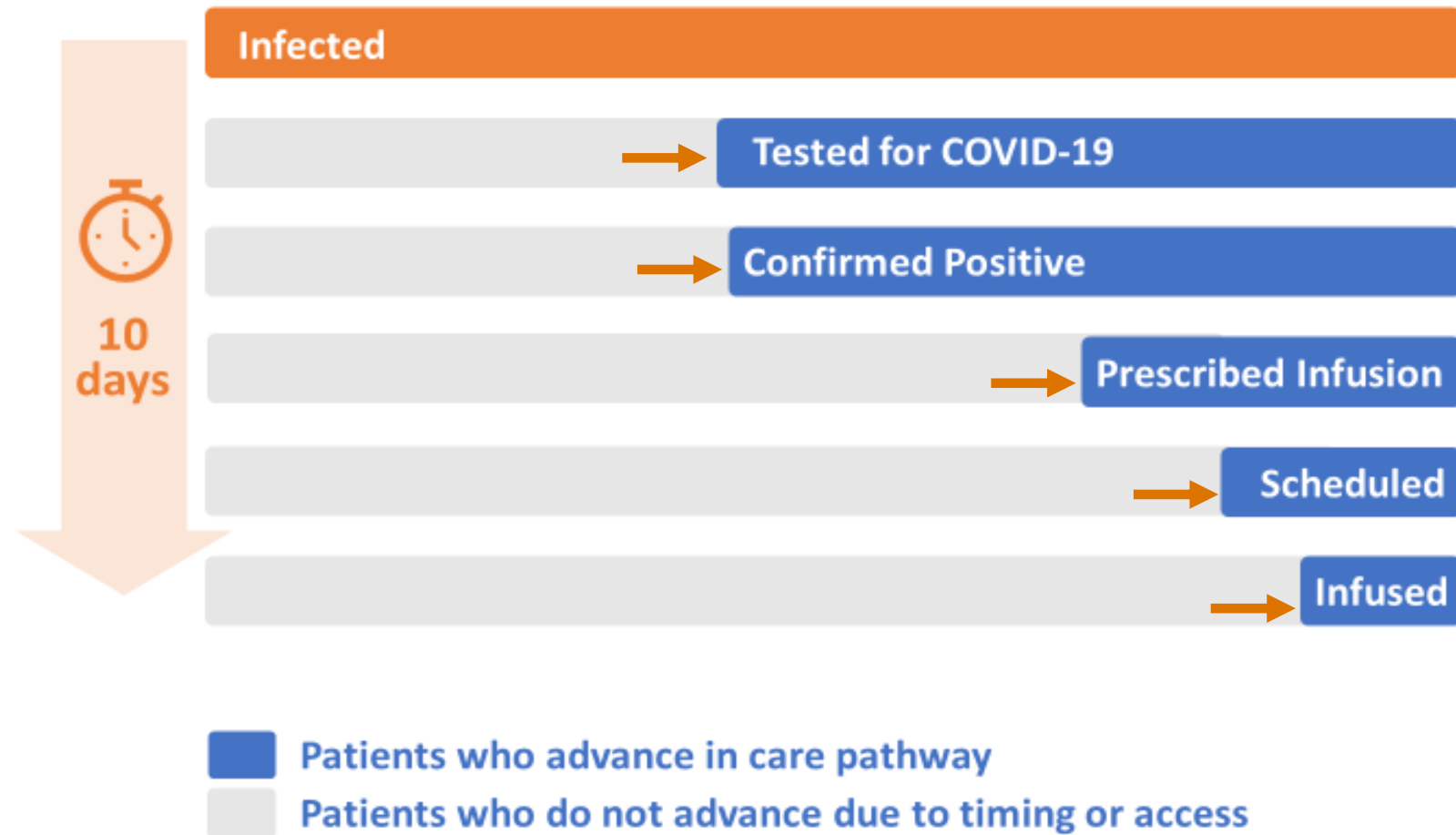
40% have BMI ≥ 35 , under 65

Complex care pathway is behind the paradox



For illustration purposes only. Proportions do not represent actual data.

Strong access inequities exist in care pathway

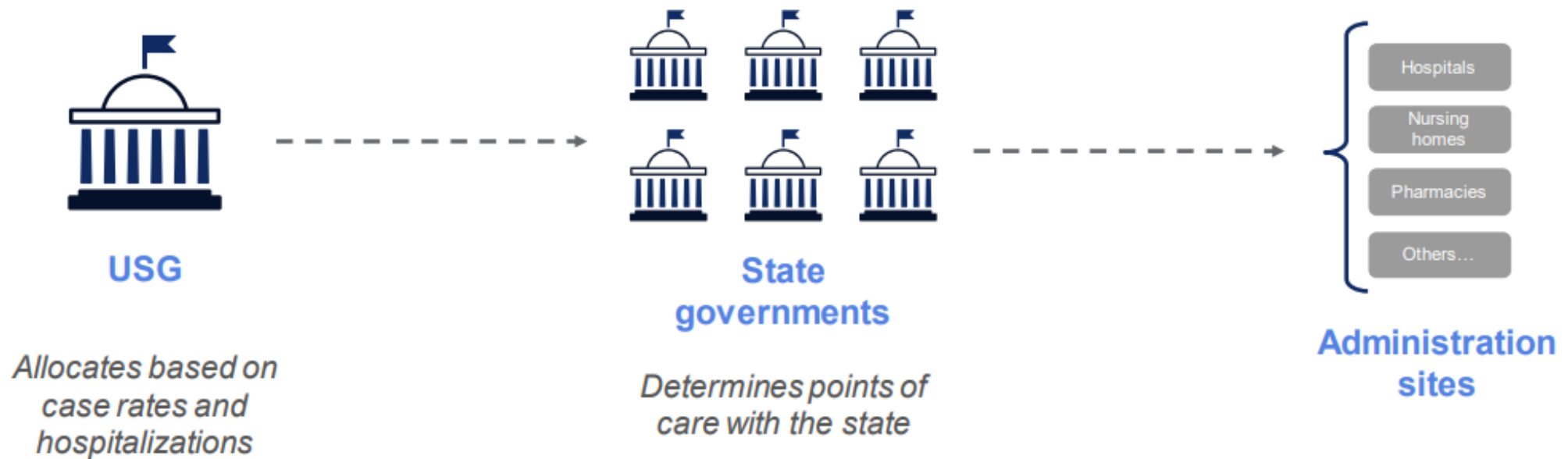


For illustration purposes only. Proportions do not represent actual data.

Opportunities for increasing access and equity

- Enhancing equitable access through **allocation**
- **Streamlining** the care pathway
- Proactive **outreach** to high-risk individuals

States can impact equity through allocation



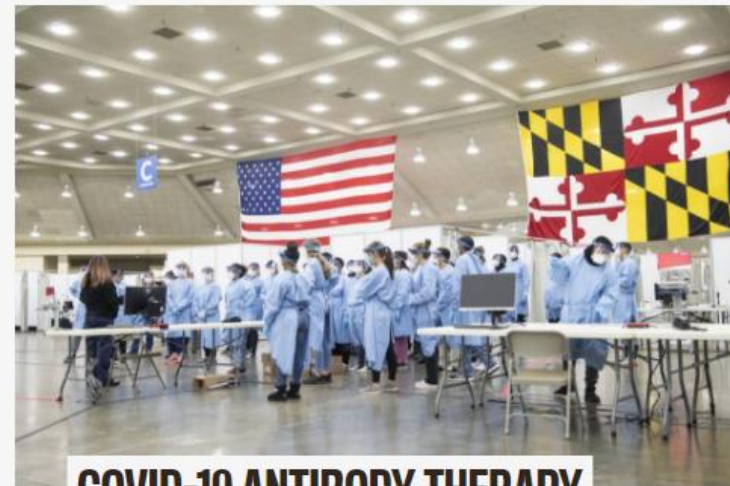
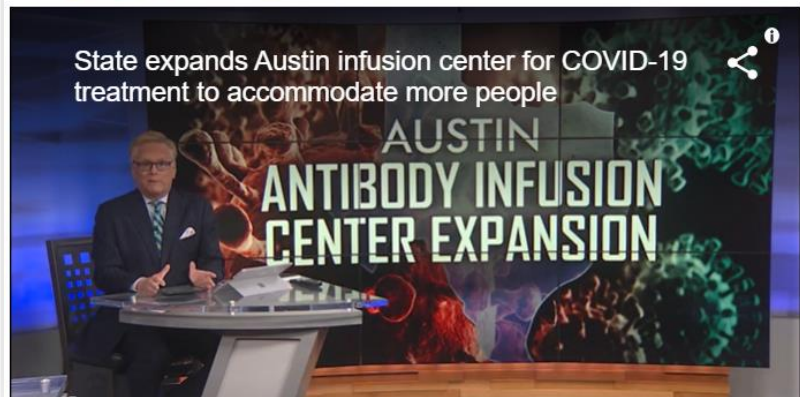
ASPR presentation at <https://www.nationalacademies.org/event/12-16-2020/workshop-on-allocation-of-covid-19-monoclonal-antibody-therapies-and-other-novel-therapeutics>

Some states set up infusion centers

State-operated infusion center opens in Anchorage to help combat COVID-19

Scott Gross · 12/13/2020

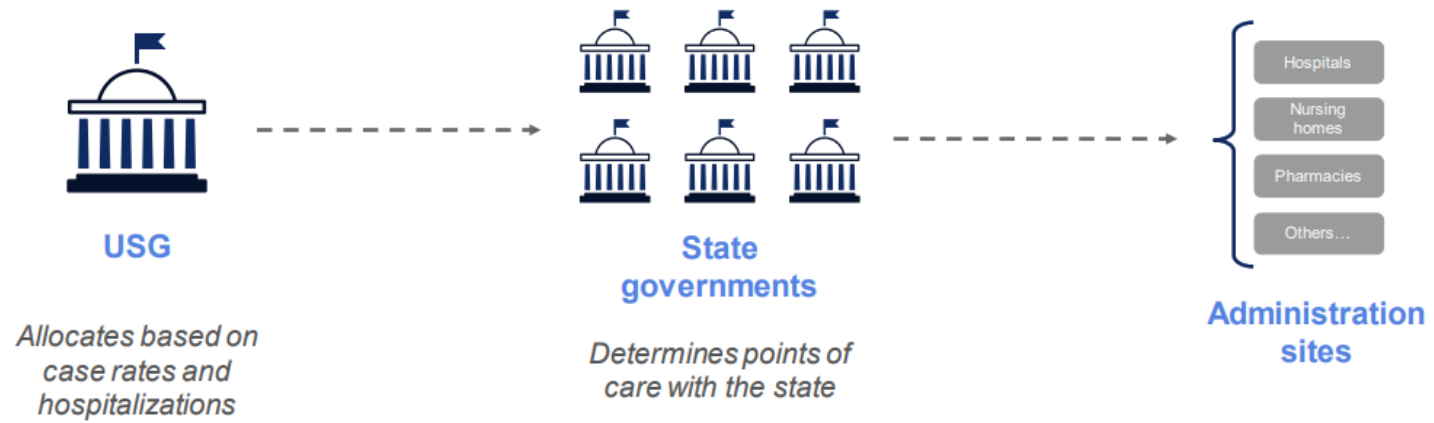
State expands Austin infusion center for COVID-19 treatment to accommodate more people



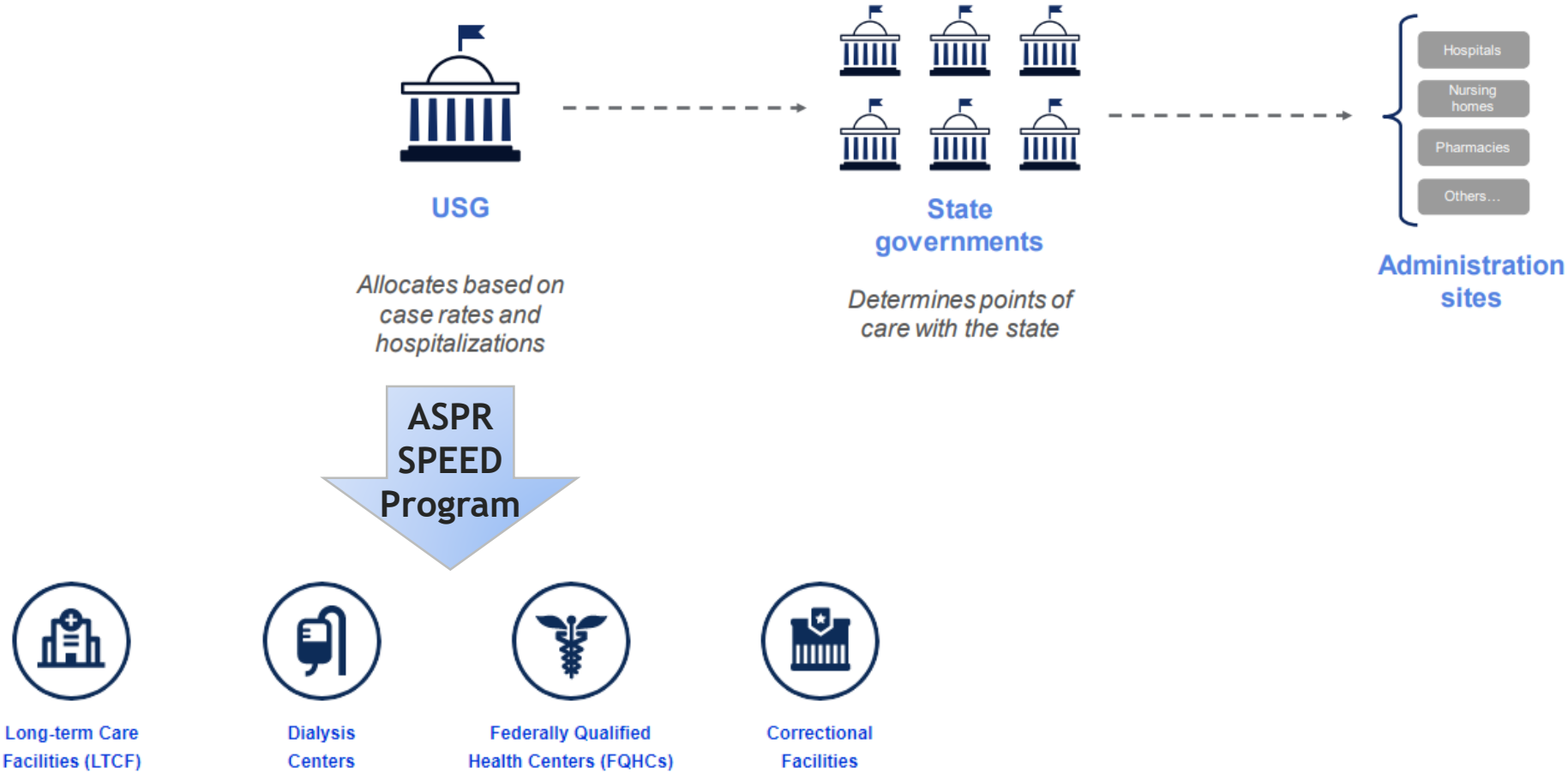
COVID-19 ANTIBODY THERAPY AVAILABLE AT BALTIMORE CONVENTION CENTER FIELD HOSPITAL

The therapies help prevent patients with mild to moderate COVID-19 symptoms from developing more serious illness.

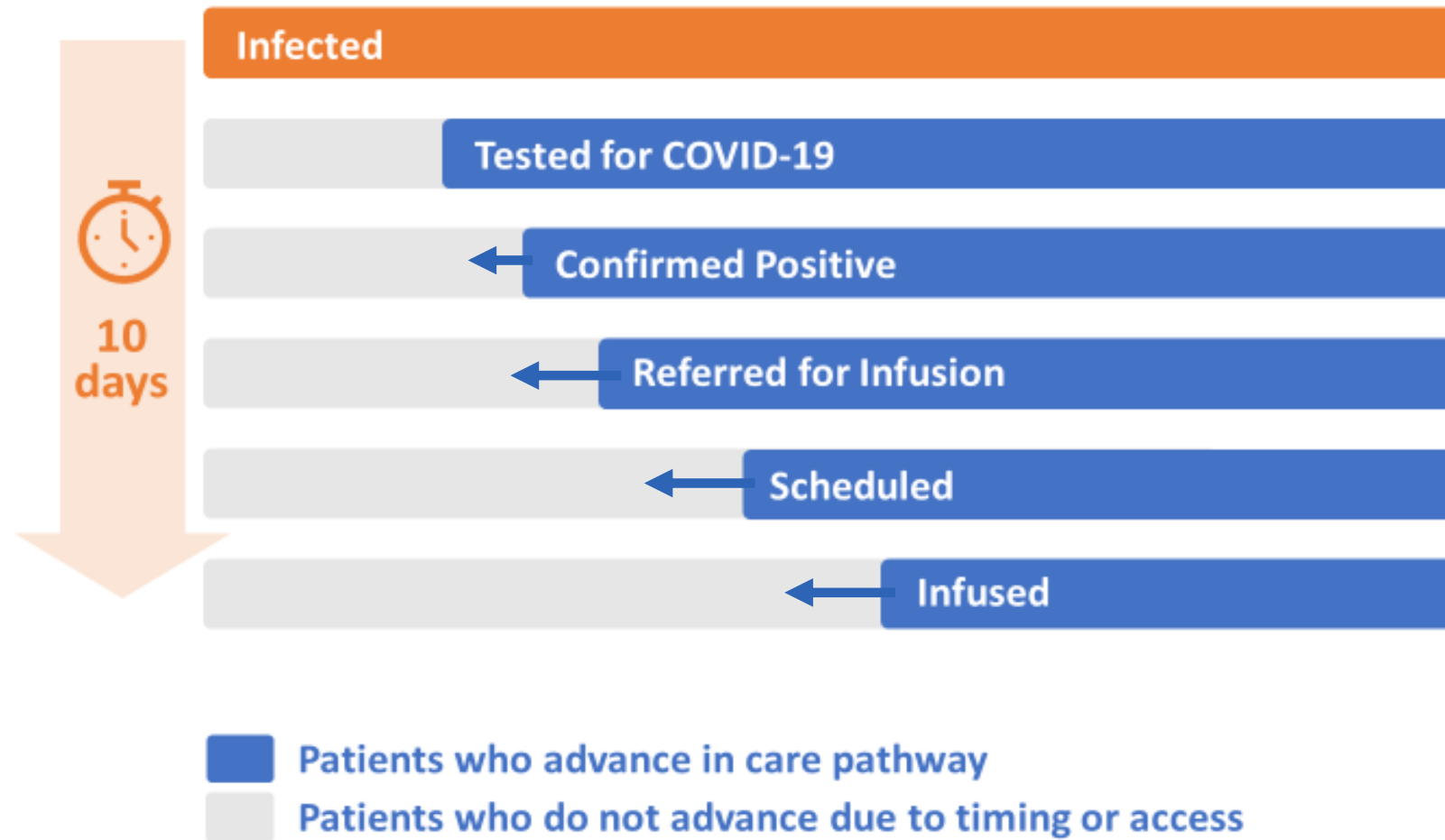
ASPR created an alternate allocation path



ASPR created an alternate allocation path



Best practices are emerging for care pathway



For illustration purposes only. Proportions do not represent actual data.

Streamlining goes beyond internal processes

- Bridging testing to infusion is the best way to streamline
- When bridging is not possible, point to next steps
- Partnerships can also help with transitions between care steps

NICA NATIONAL INFUSION CENTER ASSOCIATION

INFUSION CENTER LOCATOR

City and State, or ZIP 30 miles **SEARCH**

- Inova Mount Vernon Hospital**
17 miles
2501 Parkers Ln
Alexandria, VA
- Inova COVID Monoclonal Antibody Infusion Center**
21 miles
9321 Sanger St
Lorton, VA
- Walter Reed National Military Medical Center**
1 miles
4494 North Palmer Road
BETHESDA, MD
Unclaimed
- Sibley Memorial Hospital**
4 miles
5255 Loughboro Rd NW
Washington, DC
Verified Unclaimed

Map Satellite

Westfield Montgomery

Bethesda North Kensington Kemp Mill White Oak Hillandale

Holy Cross Hospital

Lone Oak

Huntington Terrace Chevy Chase Silver Spring Langley Park

Bethesda Martin's Addition Takoma Park Lewisdale

George Washington Memorial Parkway

Rock Creek Park

Washington

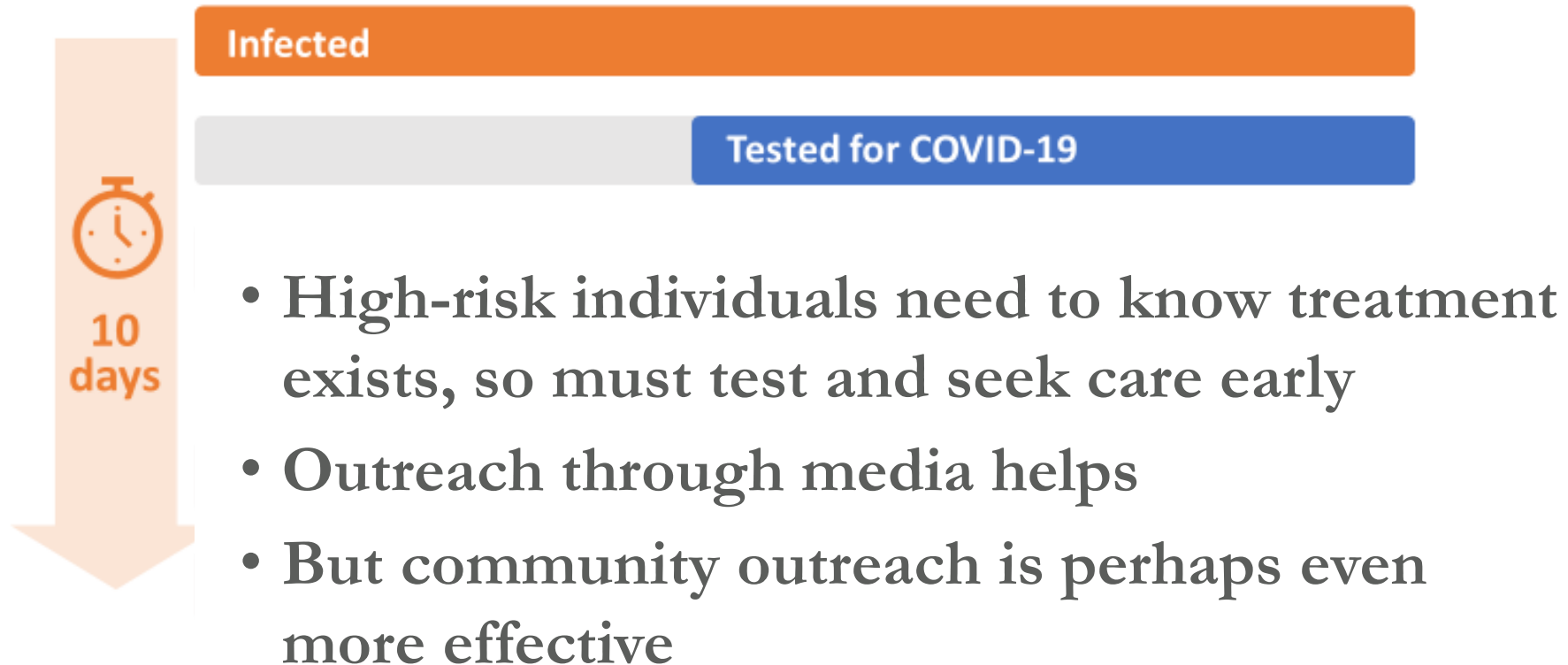
United States Capitol

Arlington The Pentagon

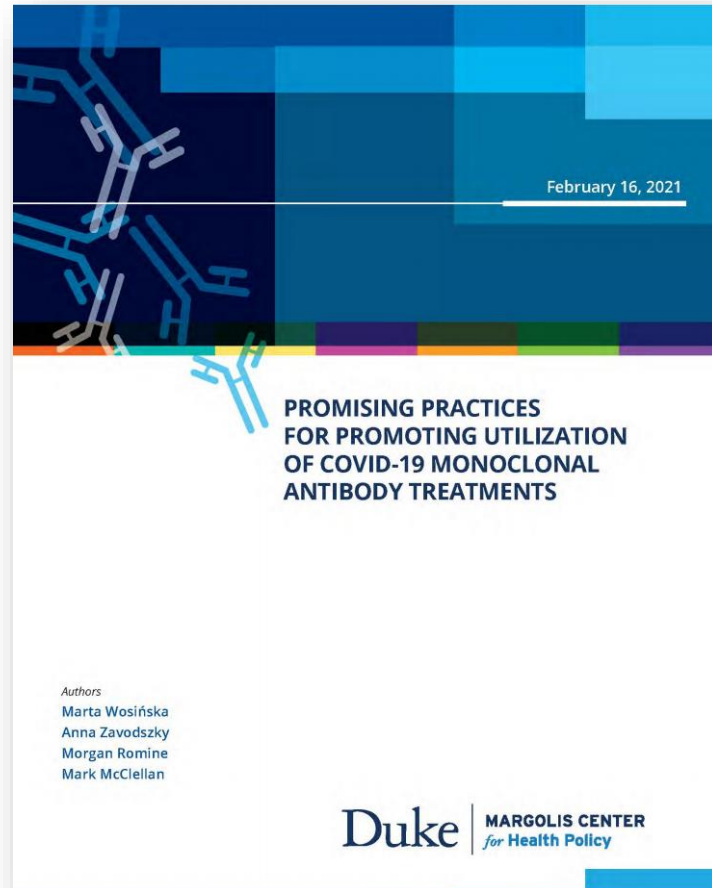
Joint Base Anacostia-Bolling

Forest Heights

Proactive outreach is key to addressing inequity



For more, see materials on Duke-Margolis site



Forthcoming paper on
best practices by states