



# New Mexico Opioid ECHO® for Community Health Workers and Peer Support Workers

Register Here:

<https://ctsctrials.health.unm.edu/redcap/surveys/?s=C7KDHP3JHT>

Join this state-wide healthcare training and be a part of the solution to the opioid epidemic.

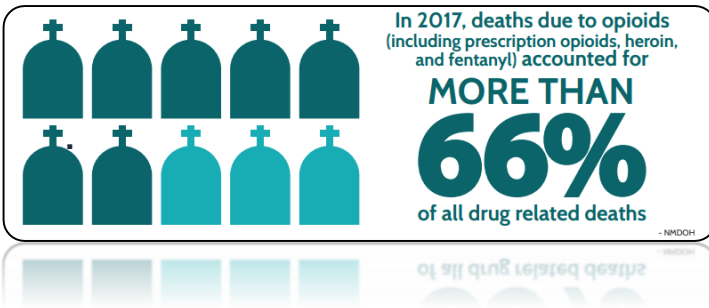
This TeleECHO™ program is a weekly, online training for New Mexico Community Health Workers, Peer Support Workers and Patient Navigators. Connect through your computer or Smartphone using simple videoconferencing technology.

**May 5th -  
July 21st**



### Participants receive:

- Up to 18 CHW CEUs certified by the New Mexico Department of Health.
- Input on real patient cases from addiction specialists
- Participation in a close community of learners with access to best practices, applicable tools, and patient resources.
- Training provided at **NO COST** to you!



**Every Tuesday  
from 2:00PM -  
3:30PM.**

For more information, reach us at:

- ✉ [CHWopioidecho@salud.unm.edu](mailto:CHWopioidecho@salud.unm.edu)
- 📄 [echo.unm.edu/collaboratives/chw](http://echo.unm.edu/collaboratives/chw)



## New Mexicans are dying of Opioid Use Disorder, and with this teleECHO program you can be a part of the solution!

### What is this program?

- 12 Weeks of trainings designed to help Frontline Health Workers meet the needs of their patients with Opioid Use Disorder, including new information around COVID-19
- Weekly 1.5 hour, virtual teleECHO sessions on Tuesdays, 2:00 - 3:30 PM, beginning May 5th, 2020 through July 21st, 2020.
- Throughout the program, each participant will have the opportunity to present a de-identified case about a patient/client and have an opportunity to follow up on their progress with the group.

### What is the curriculum?

Topics include:

- Opioid Use Disorder 101
- Pain Management 101
- Stigma and Language
- Scope of Practice: Your Role in Addressing Opioid Use
- Harm Reduction
- Following Up After a Nonfatal Overdose
- Supporting Friends, Family and Survivors
- Stages of Change
- Talking to Clients about Behavior Change
- Linking to Care and Community Resources
- How to help patients with OUD during the COVID-19 pandemic.

**Sessions start  
Tuesday, May 5th!**

**Register Today!**

<https://ctsctrials.health.unm.edu/redcap/surveys/?s=C7KDHP3JHT>