



THE UNIVERSITY OF NEW MEXICO ♦ HEALTH SCIENCES CENTER
UNM HOSPITALS

Bernalillo County Commissioner Report

September 30, 2016



THE UNIVERSITY OF NEW MEXICO • HEALTH SCIENCES CENTER

UNM HOSPITALS

Index

	Page
Bernalillo County patient encounters by funding source	3
Financial assistance to patients by county	4
UNM Care and UNMCI enrollment and numbers assigned to First Choice	5
Emergency room data on patients leaving without being seen and average hours from arrival to disposition	6
Number of FTE's and retention rate for RN, pharmacy, pulmonary, physical therapist and radiology technicians	7
Quarterly statement of net assets	8
Quarterly statement of revenues, expenses and changes in net assets	9
A Number of indigent Bernalillo County resident <i>outpatients</i> broken out by zip code and the cost of care for such patients	10
B Number of indigent Bernalillo County resident <i>inpatients</i> broken out by zip code and the cost of care for such patients	10
C Primary Services provided to Bernalillo County residents by primary service type	11
D Primary reasons for Bernalillo County indigent resident visits	12
E Emergency room wait times for Bernalillo County residents	10
G Number of County residents applying for and approved for financial assistance	13
UH and Behavioral Statistics	14
2016 Revenue by Payor	15
2016 Mill Levy Expense	16
2016 Mill Levy Expense by Specialty	17
2016 Mill Levy Expense - Behavioral Only	18
Financial Assistance Enrollment Trends	19

**Encounters - Bernalillo County
 For the three months ended September 30, 2016**

Source	Bernalillo County Encounters
Charity Care - Bernalillo County	2,196
EMSA	135
IHS	690
Medicaid	86,511
Medicare	60,393
Uninsured	10,135
HMO's & Insurance	50,624
All Other	11,173
Total Encounters	221,857

Native American Encounters **18,429**

Encounters - Bernalillo County consist of Inpatients and Outpatients who provided a Bernalillo County zip code during their registration. Categories are based on Primary Payer Code. Native American Encounters are based on race as provided during registration, are not restricted to only Bernalillo County zip codes and could be duplicate of the Bernalillo encounters by payer above.

Financial Assistance to Patients by County*
For the three months ended September 30, 2016

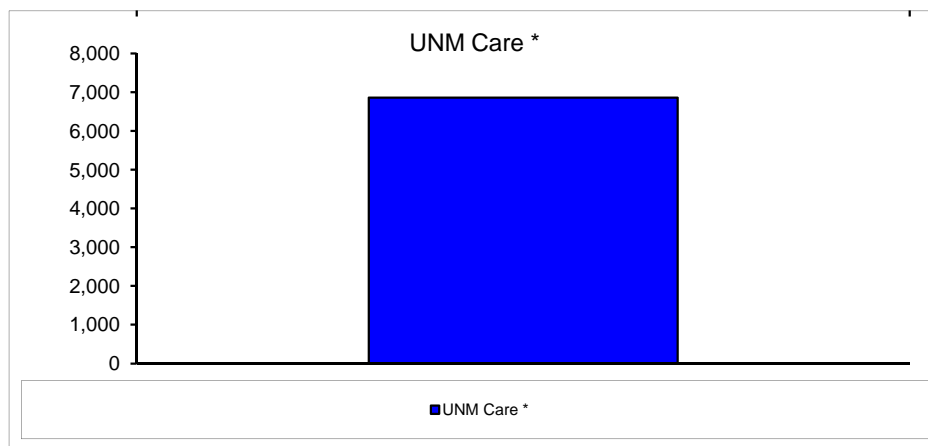
County	Charity Care Cost	Uninsured Cost	Total Uncompensated Care Cost
Bernalillo	8,159,054	\$ 9,615,322	\$ 17,774,376
Catron	2,819	-	2,819
Chaves	134	42,218	42,353
Cibola	189	230,949	231,138
Colfax	668	839	1,507
Curry	696	48,371	49,066
De Baca	47	-	47
Dona Ana	142	24,016	24,159
Eddy	461	76,956	77,417
Grant	3	18,931	18,934
Guadalupe	14	18,310	18,325
Harding	-	-	-
Hidalgo	-	-	-
Lea	18,604	43,315	61,918
Lincoln	10	8,472	8,482
Los Alamos	-	2,291	2,291
Luna	3	1,991	1,994
Mc Kinley	4	105,492	105,495
Mora	-	6,636	6,636
Otero	1,172	-	1,172
Quay	-	341	341
Rio Arriba	304	35,305	35,609
Roosevelt	-	17,035	17,035
San Juan	312	67,008	67,321
San Miguel	178	12,730	12,908
Sandoval	17,241	560,340	577,581
Santa Fe	4,670	175,773	180,443
Sierra	1,250	1,083	2,333
Socorro	143	26,724	26,867
Taos	50,316	116,836	167,152
Torrance	1,035	104,095	105,130
Union	-	38,590	38,590
Valencia	20,762	1,050,653	1,071,415
Out Of State	-	746,664	746,664
Grand Total	\$ 8,280,230	\$ 13,197,286	\$ 21,477,517

* Based on primary and secondary coverage

Total Uncompensated Care Cost: Cost of care for UNM Hospitals is the actual cost of providing care - salary, benefits, supplies, drugs, blood, organs, utilities, depreciation, contracts, services.

**UNM Care
 As of September 2016**

Category	Enrollment
UNM Care *	6,860

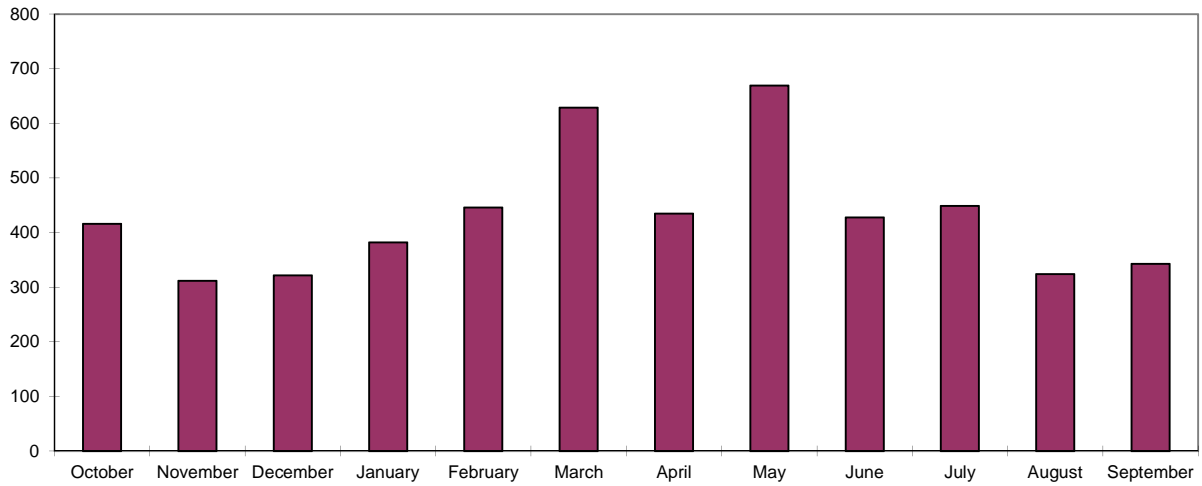


* UNM Care includes 138 Native American Enrollees as of 9/30/2016.

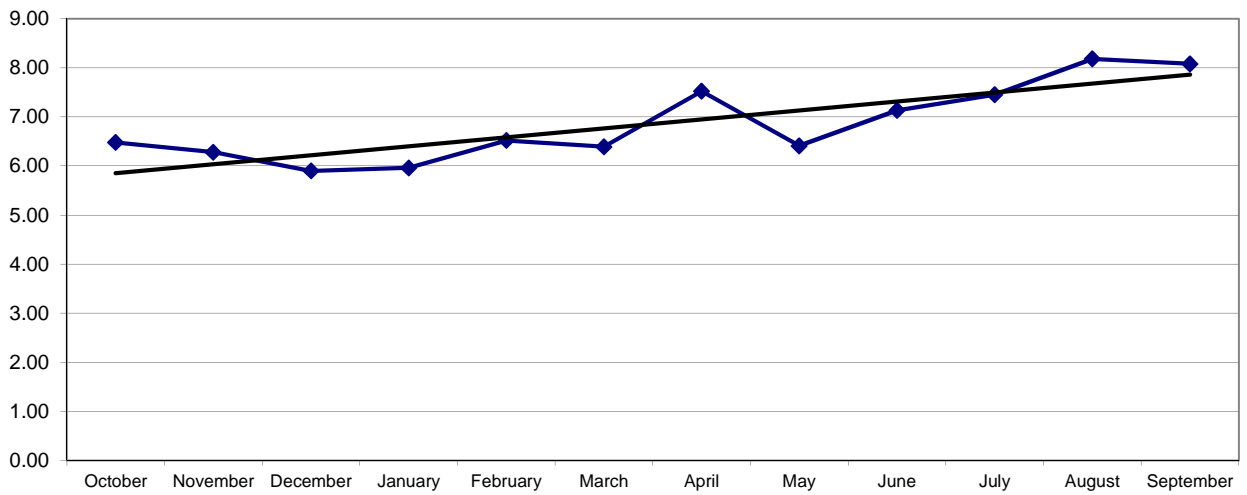


**Emergency Services
For the Twelve months ending September 30, 2016**

Patients left without being seen



Average Hours from Arrival to Disposition





**Number of FTE's and Retention Report
For the three months ended September 30, 2016**

Category	Number of FTE's as of June 2016	Number of FTE's as of September 2016	Hires Headcount	Terms Headcount	Rolling Retention Rate
RN's	1,867	2,013	61	90	86.89%
Pharmacy	167	192	11	3	88.15%
Pulmonary	71	77	-	1	97.44%
Physical Therapists	48	64	2	2	90.53%
Radiology Techs	140	137	2	3	92.07%

NOTE: The number of FTE's for selected categories is listed above; however, it should be noted that the retention rate is calculated using the hires and terms for each respective category.

UNM HOSPITALS

Statements of Net Assets

September 30, 2016 and June 30, 2016

Assets	September 2016	Unaudited June 2016
<i>(In Thousands)</i>		
Current assets:		
Cash and cash equivalents	\$ 186,449 *	143,268
Marketable securities	34,809	34,864
Receivables:		
Patient, net	124,746	130,988
University of New Mexico	758	1,472
Estimated third-party payor settlements	25,335	58,460
Bernalillo County treasurer	23,027	1,740
Other	38,674	31,320
Total current assets	<u>433,798</u>	<u>402,112</u>
Noncurrent assets:		
Assets whose use is limited:		
Held by trustee	20,213	16,127
By UNM Hospital Clinical Operations Board	21,302	21,040
Capital assets, net	228,499	232,499
Total assets	<u>703,812</u>	<u>671,778</u>
 Liabilities		
Current liabilities:		
Accounts payable	43,925	62,288
Payable to University of New Mexico	91,069	53,132
Estimated third-party payor settlements	64,508	52,607
Interest payable bonds	881	88
Other accrued liabilities	52,011	52,253
Total current liabilities	<u>252,394</u>	<u>220,368</u>
Bonds payable	108,965	108,965
Total liabilities	<u>361,359</u>	<u>329,333</u>
 Net Assets		
Restricted for expendable grants, bequests, and contributions	15,636	15,355
Restricted for trust indenture and debt agreement	20,213	16,128
Unrestricted Total net assets	187,070	187,428
Assets invested in capital	119,534	123,534
Total net assets	<u>\$ 342,453</u>	<u>\$ 342,445</u>

* Note - Increase in cash for September 2016 is a result of the increase in payables.

UNM HOSPITALS

Statements of Revenues, Expenses, and Changes in Net Assets

For the three months ended September 30, 2016

<i>(In Thousands)</i>	September 2016	Unaudited June 2016
Operating revenues:		
Net patient service	\$ 221,441	872,468
Other	5,578	23,992
Total operating revenues	<u>227,019</u>	<u>896,460</u>
Operating expenses:		
Employee Compensation and Benefits	124,480	474,255
Medical services	44,033	184,038
Medical supplies	43,226	160,792
Occupancy/Equipment/Depreciation	21,610	96,847
Purchased services	14,050	53,137
Other	6,564	27,824
Total operating expenses	<u>253,963</u>	<u>996,894</u>
Operating loss	<u>(26,944)</u>	<u>(100,434)</u>
Nonoperating revenues (expenses):		
Bernalillo County Mill Levy	23,994	95,849
State appropriation	2,910	12,483
Investment income (dividends, gains and losses)	266	67
Interest Expense	(793)	(3,183)
Other Revenue and (Expense)	(77)	7,261
Land and Permanent Fund	198	850
Bequests and contributions	454	2,111
Net nonoperating revenues	<u>26,952</u>	<u>115,438</u>
Increase in net assets	8	15,004
Net assets, beginning of year	<u>342,445</u>	<u>327,441</u>
Net assets, end of year	<u>\$ 342,453</u>	<u>342,445</u>

Financial Assistance to Bernalillo County Patients by Zip Code
For the three months ended September 30, 2016

- A - Number of Indigent Bernalillo County resident outpatients by zip code and cost of care**
B - Number of Indigent Bernalillo County resident inpatients by zip code and cost of care
F - Total cost of care for Bernalillo County indigent patients by zip code with cost methodology

Bernalillo County Zip	Inpatient Count	Inpatient Charity Care and Unisured Cost	Outpatient Count	Outpatient Charity Care and Unisured Cost	Total Patient Count	Total Patient Charity Care and Unisured Cost
87008	2	\$ 5,000	38	\$ 7,498	40	\$ 12,498
87022	-	-	101	12,483	101	12,483
87047	1	-	68	42,887	69	42,887
87059	9	104,600	167	118,770	176	223,370
87101	2	12,720	14	9,075	16	21,795
87102	47	378,792	1,358	752,121	1,405	1,130,914
87103	1	357	33	14,942	34	15,299
87104	17	79,493	617	377,028	634	456,521
87105	119	1,078,844	5,675	1,946,911	5,794	3,025,756
87106	29	152,559	1,041	680,483	1,070	833,042
87107	49	330,286	1,449	726,394	1,498	1,056,680
87108	82	437,819	2,685	1,348,072	2,767	1,785,892
87109	38	180,962	1,169	581,059	1,207	762,021
87110	43	134,491	1,293	484,997	1,336	619,488
87111	23	259,856	866	446,595	889	706,451
87112	39	121,485	1,252	641,888	1,291	763,373
87113	11	142,470	352	131,508	363	273,978
87114	29	60,498	1,008	390,824	1,037	451,322
87115	-	-	3	243	3	243
87116	-	-	19	22,206	19	22,206
87117	-	-	-	500	-	500
87119	-	-	15	22	15	22
87120	37	70,573	1,244	457,420	1,281	527,993
87121	115	899,425	4,529	2,587,471	4,644	3,486,896
87122	2	431	172	52,774	174	53,206
87123	45	310,592	1,819	916,551	1,864	1,227,143
87125	2	28,189	89	50,867	91	79,056
87131	1	5,000	13	51,912	14	56,912
87151	1	40,716	15	1,590	16	42,306
87153	-	-	2	-	2	-
87154	-	-	25	2,238	25	2,238
87158	-	-	-	-	-	-
87176	-	-	68	8,151	68	8,151
87181	-	-	24	7,957	24	7,957
87184	1	1,812	8	1,143	9	2,956
87185	-	-	2	-	2	-
87187	-	-	2	86	2	86
87190	1	89	17	1,102	18	1,192
87191	-	-	23	1,542	23	1,542
87192	1	1,812	41	6,170	42	7,982
87193	1	-	43	5,069	44	5,069
87194	-	-	20	1,082	20	1,082
87195	2	6,718	61	21,502	63	28,220
87196	-	-	20	1,251	20	1,251
87197	2	1,812	46	5,676	48	7,488
87198	-	-	46	2,629	46	2,629
87199	-	-	47	6,283	47	6,283
Grand Total	752	\$ 4,847,403	27,599	\$ 12,926,973	28,351	\$ 17,774,376

C - Financial Assistance to Bernalillo County Patients by Service Type
For the three months ended September 30, 2016

Bernalillo County Zip	Cancer Count	Medicine Count	Pediatrics Count	Surgery Count	Emergency Medicine Count	Neurology Count	OBGYN Count	Orthopedics Count	Psychiatry Count	Other Count	Total Count
87008	7	18	-	3	1	4	-	3	4	-	40
87022	16	49	-	8	6	5	1	1	14	1	101
87047	3	36	-	1	10	1	2	6	5	5	69
87059	15	96	-	8	7	12	6	2	27	3	176
87101	-	8	-	-	3	-	1	1	3	-	16
87102	74	730	3	73	100	72	56	18	261	18	1,405
87103	1	16	1	1	-	5	1	-	7	2	34
87104	26	370	-	36	34	21	32	8	89	18	634
87105	231	1,883	5	205	172	203	182	60	608	79	3,628
87106	35	550	1	69	58	50	54	43	187	23	1,070
87107	82	776	2	91	53	98	85	30	259	22	1,498
87108	116	1,455	1	140	133	146	132	61	516	67	2,767
87109	64	613	3	67	96	73	53	30	181	27	1,207
87110	67	668	-	60	60	89	46	30	277	39	1,336
87111	72	398	-	52	54	70	23	20	179	21	889
87112	70	646	4	77	60	87	68	22	227	30	1,291
87113	25	172	1	32	19	19	27	13	40	15	363
87114	96	491	1	64	32	77	52	19	186	19	1,037
87115	-	-	-	-	-	1	-	-	2	-	3
87116	1	11	-	3	1	-	1	1	1	-	19
87117	-	-	-	-	-	-	-	-	-	-	-
87119	-	6	-	1	-	8	-	-	-	-	15
87120	138	673	1	66	54	72	41	27	193	16	1,281
87121	310	4,767	10	228	236	269	313	66	460	151	6,810
87122	25	75	-	9	7	8	2	2	42	4	174
87123	119	1,073	3	103	89	97	86	24	230	40	1,864
87125	12	41	-	-	6	7	1	1	18	5	91
87131	-	6	1	-	2	1	-	-	4	-	14
87151	1	4	-	-	3	-	-	2	6	-	16
87153	-	2	-	-	-	-	-	-	-	-	2
87154	3	13	-	1	3	2	2	1	-	-	25
87158	-	-	-	-	-	-	-	-	-	-	-
87176	2	39	-	9	4	3	-	6	5	-	68
87181	2	13	-	6	-	2	-	-	1	-	24
87184	1	5	-	-	-	1	-	-	-	2	9
87185	-	2	-	-	-	-	-	-	-	-	2
87187	2	-	-	-	-	-	-	-	-	-	2
87190	5	9	-	1	-	2	-	-	1	-	18
87191	5	8	-	6	-	1	-	2	1	-	23
87192	7	25	-	2	-	1	-	-	6	-	42
87193	3	28	-	1	2	3	5	1	-	1	44
87194	-	6	-	4	-	2	4	2	2	-	20
87195	8	30	-	8	6	5	-	1	5	-	63
87196	-	12	-	2	-	-	-	-	6	-	20
87197	2	27	-	4	1	3	-	2	9	-	48
87198	3	24	-	3	2	1	2	2	9	-	46
87199	5	25	-	1	-	2	1	1	10	2	47
Grand Total	1,654	15,899	37	1,445	1,314	1,523	1,279	508	4,081	611	28,351

Includes inpatient and outpatient

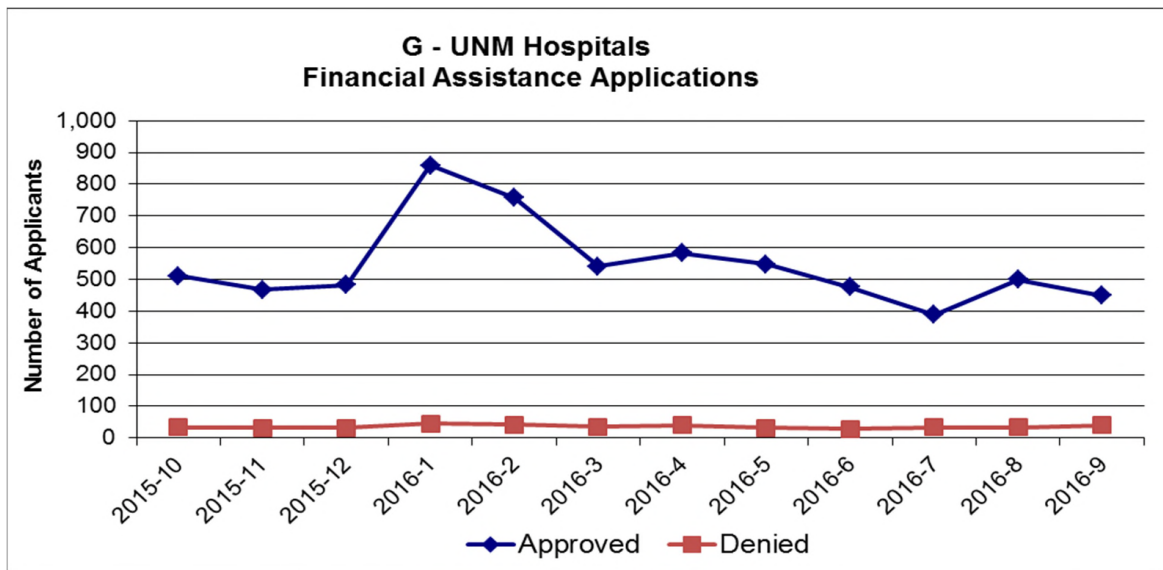
**D - Primary Reason for Bernalillo County Indigent Resident Visits
 For the 6 Quarters ending September 30, 2016**

Description	Examples of Illnesses						
	Q1 FY17	Q4 FY16	Q3 FY16	Q2 FY16	Q1 FY16	Q4 FY15	
Mental Disorders	4,355	5,307	4,992	2,167	4,635	7,838	Alcohol abuse, depression, post traumatic stress disorder
Factors Influencing Health Status and Contact with Health Service	3,801	3,247	4,336	2,587	3,971	4,344	Routine exam, follow up to surgery, child and infant wellness checks, etc
Diseases of Musculoskeletal and Connective Tissue	2,682	2,164	3,417	2,026	2,369	3,136	Joint pain, back pain, pain in limb, arthritis
Endocrine, Nutritional, and Metabolic Diseases and Immunity Disr	1,460	2,142	3,533	1,385	2,294	3,396	Abdominal pain, chest pain, cough, headache, rash, shortness of breath
Signs, Symptoms and Ill-Defined Conditions	2,514	1,186	5,340	1,107	1,541	2,457	Sleep Apnea, ear infection, carpal tunnel, diseases of the eye, migraine
Diseases of Nervous System and Sense Organs	859	1,093	1,113	859	1,486	2,506	Diabetes, high blood cholesterol, diseases of thyroid
Diseases of Circulatory System	1,505	1,167	2,209	717	1,340	1,748	Bone fractures, sprains, wounds, contusions (bruises)
Injury and Poisoning	2,466	1,152	2,392	728	1,326	1,775	Hypertension, heart failure, etc.
Diseases of Respiratory System	804	1,066	279	422	1,224	1,789	Cancer, benign growths
Diseases of Genitourinary System	897	1,108	998	640	1,195	1,652	Urinary tract infection, kidney stones, kidney disease
Neoplasms (abnormal new growth of tissue)	1,223	214	1,730	541	712	1,942	Sore throat, respiratory infection, sinusitis, asthma, pneumonia
Diseases of Digestive System	695	869	1,421	391	656	963	Esophageal reflux, hernia, diseases of colon, diseases of liver
Diseases Skin and Subcutaneous Tissue	601	337	1,528	77	645	903	
Complications of Pregnancy, Childbirth, and the Puerperium	1,059	451	871	388	525	917	Psoriasis, cellulitis and abscess
Infectious and Parasitic Diseases	301	214	333	412	159	359	Hepatitis, viral infections
Congenital Anomalies	163	28	352	88	133	179	Anemia, etc.
Diseases of Blood and Blood Forming Organs	162	84	348	100	76	190	
Newborn (Perinatal)	80	33	116	104	43	121	
Other (prescription pick-up, etc.)	2,724	1,400	3,033	1,679	4,021	4,938	
Total Visits	28,351	23,262	37,443	16,418	28,351	33,315	

Consists of indigent patients who provided a Bernalillo County zip code during their registration. Categories are based on CMS diagnosis codes.



For the twelve months ended September 30, 2016



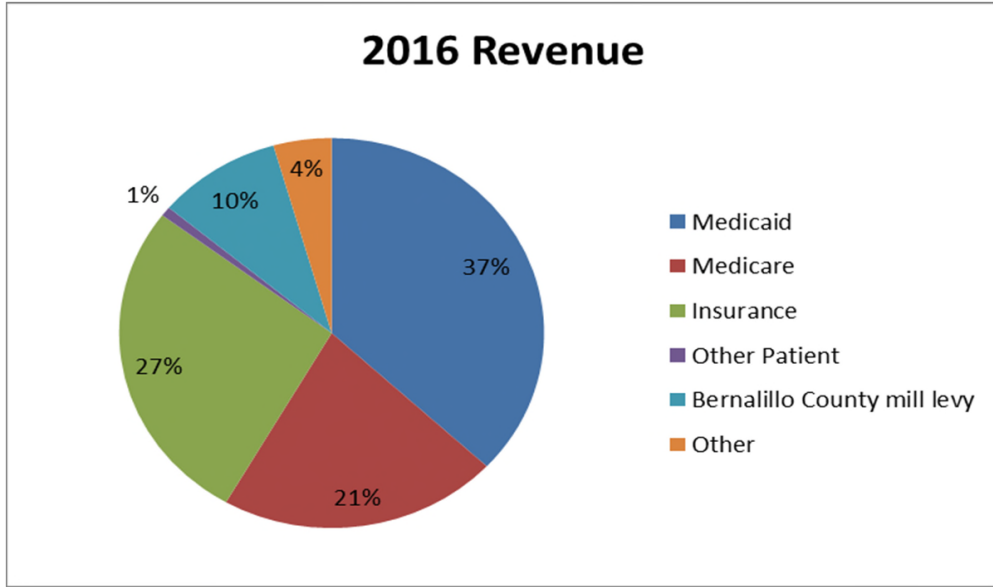


**UNMH Statistics
 FY16 and FY17 as of September 30**

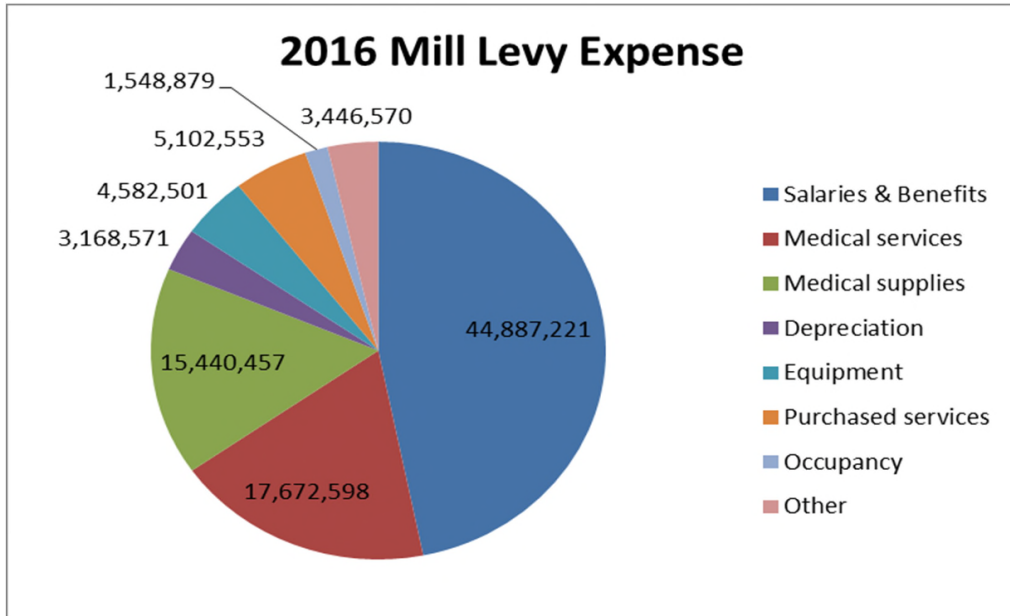
	FY17 Actual	FY16 Actual
Patient Days		
Adult	29,381	112,936
Pediatric	9,939	40,353
Newborn	1,281	5,321
Total Patient Days	40,601	158,610
Total Equivalent Observation Days	2,380	13,411
Other Stats		
Clinic Visits	121,650	520,038
Emergency/Urgent Care	25,958	102,188
Operations	5,213	19,947
Births	740	3,024

**Behavioral Statistics
 FY16 and FY17 as of September 30**

	FY17 Actual	FY16 Actual
Patient Days	5,197	23,242
Other Stats		
Outpatient visits	13,810	59,738
Midlevel	24,583	93,204
Methadone & Buprenorphine	37,096	143,151

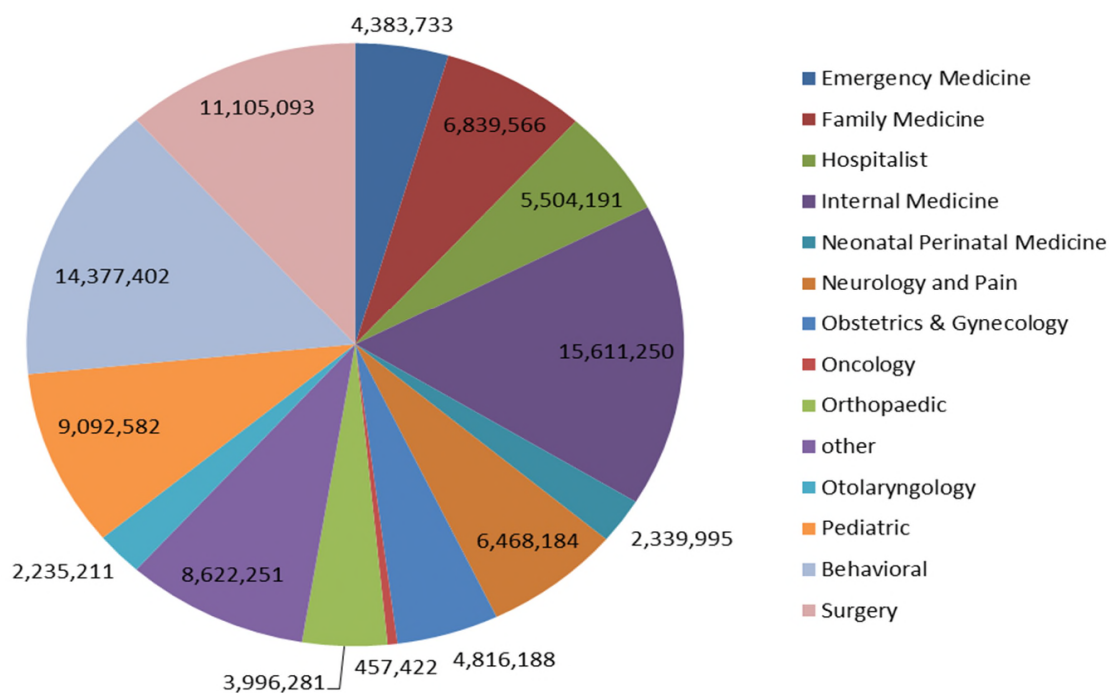


Medicaid	\$ 374,523,238
Medicare	215,116,785
Insurance	274,743,916
Other Patient	8,083,381
Bernalillo County mill levy	95,849,349
Other	44,837,527

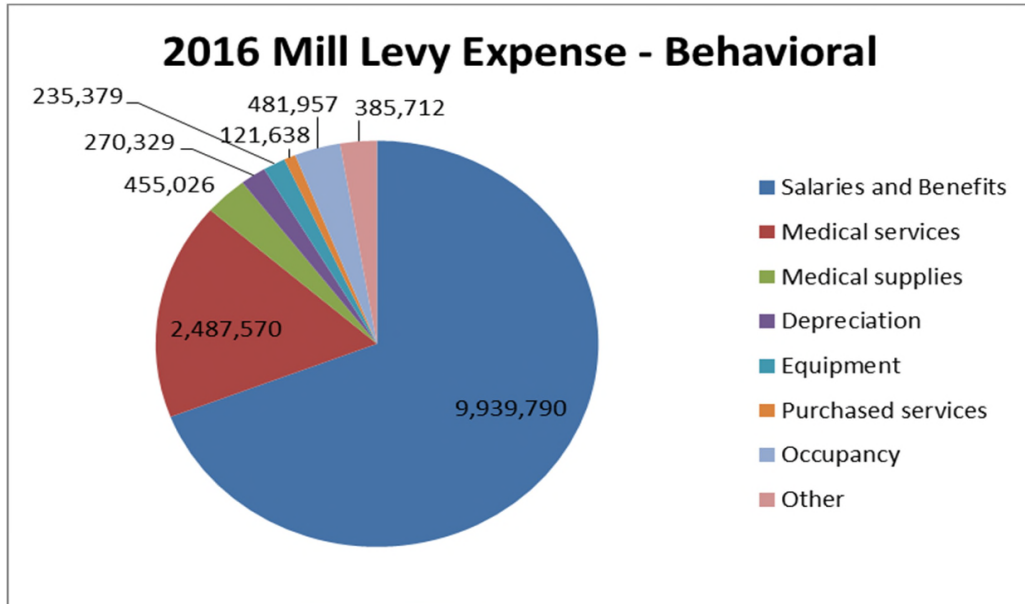


Salaries & Benefits	\$	44,887,221
Medical services		17,672,598
Medical supplies		15,440,457
Depreciation		3,168,571
Equipment		4,582,501
Purchased services		5,102,553
Occupancy		1,548,879
Other		3,446,570
Total Expense		95,849,349

2016 Mill Levy Expense by Specialty



Emergency Medicine	\$	4,383,733
Family Medicine		6,839,566
Hospitalist		5,504,191
Internal Medicine		15,611,250
Neonatal Perinatal Medicine		2,339,995
Neurology and Pain		6,468,184
Obstetrics & Gynecology		4,816,188
Oncology		457,422
Orthopaedic		3,996,281
other		8,622,251
Otolaryngology		2,235,211
Pediatric		9,092,582
Behavioral		14,377,402
Surgery		11,105,093
Total	\$	95,849,349



Salaries and Benefits	\$	9,939,790
Medical services		2,487,570
Medical supplies		455,026
Depreciation		270,329
Equipment		235,379
Purchased services		121,638
Occupancy		481,957
Other		385,712
Total Expense	\$	14,377,402

