

UNM HEALTH SCIENCES CENTER

SCHOOL OF MEDICINE

New Facility Plan & Design



**The Future of New
Mexico's Health
Care Workforce**



THE UNIVERSITY OF
NEW MEXICO.



A MESSAGE FROM THE PRESIDENT

Countless New Mexicans know the frustration of not having adequate access to quality health care. It can happen to any of us, whether we live in an urban part of our state, where clinical resources tend to be clustered, or in one of our more rural areas, with more limited health infrastructure and fewer providers. At The University of New Mexico, we believe every New Mexican, regardless of income or where they reside, should have access to the health care they need.

In addressing New Mexico's health care challenges, UNM plays a special role and has a unique responsibility. We are the state's primary educational institution for training the health professional workforce, and we serve as the state's only Level 1 Trauma Center and the "one and only" provider for many critical health services. We are home to the National Cancer Institute-designated Comprehensive Cancer Center, a dedicated children's hospital, and a specialized children's emergency department, among other unique services.

Put simply, if you need to receive extensive or highly specialized care in New Mexico, at some point, it will likely be at a UNM facility or with the support of UNM-trained health professionals. This responsibility is a promise to our community and the state — a promise to be a part of everyone's health care journey and to support every health system across New Mexico.

This is why we are focusing on such a bold and transformative initiative for UNM, significantly expanding our role in providing access to health care for the State of New Mexico — especially for those unique services that only UNM provides. It is more than just an investment in infrastructure; it is a crucial step toward a future of better health care for all New Mexicans. We look forward to working with you on what we acknowledge is an ambitious undertaking — one that will address the needs of every health system and every corner of our state.

Garnett S. Stokes, PhD
President
The University of New Mexico

FROM THE EXECUTIVE VICE PRESIDENT, UNM HEALTH SCIENCES

As New Mexico's only comprehensive academic medical center, we are focused on educating and training our state's future health care workforce. We are clear on our mission — our integration of academics, research, and clinical training prepares our graduates to provide high-quality patient care to diverse populations in all regions of our state.

As New Mexico evolves and grows, we too must do the same. We find ourselves at a critical junction where we must take bold actions to ensure we are meeting the health care demands of our state today and into the future. We are growing our graduating classes in all of our programs so that we can increase the number of trained health care workers available to take critically important jobs across the state. With more students comes the need for more faculty, staff, and programs.

FROM THE DEAN, UNM SCHOOL OF MEDICINE

The UNM School of Medicine is deeply committed to addressing the health care workforce challenges facing our state. As New Mexico's population grows, the need for skilled health care professionals — especially in underserved rural and Tribal communities — has never been more urgent.

Our workforce expansion initiative aims to meet this critical need. Our School is renowned for training exceptional physicians and allied health professionals who integrate scientific discovery with health equity, while keeping the patient at the center. These individuals are essential to delivering holistic care, integrating curative treatments into practice, and

In the last few years, we've worked diligently to expand UNM's clinical delivery infrastructure by adding more clinical spaces, more beds, and more places to treat our patients. That growth gives us a new and greater opportunity to grow our health sciences educational programs.

However, our current physical infrastructure at the School of Medicine is a barrier to achieve these goals. To grow and meet the health needs of our population, we are left with no choice but to build a new facility to house the UNM School of Medicine. We are grateful for your ongoing support and your shared vision of a healthier New Mexico.

Michael Richards, MD, MPA
Executive Vice President
UNM Health Sciences

ensuring patients across New Mexico receive the support they deserve.

Your investment in this initiative will impact the health and well-being of our communities by fostering a health care workforce committed to practicing in this Land of Enchantment and ready to meet the unique challenges of our state. We are grateful for your continued support of the School of Medicine.

Patricia W. Finn, MD
Dean
UNM School of Medicine

HEALTH CARE WORKFORCE

NEEDS & ASSESSMENT



For many New Mexicans, access to care remains a significant challenge. Thirty-two out of 33 counties are designated “health professionals shortage areas” and about a quarter of New Mexico’s population lives in vast rural areas with limited access to care. We are also seeing a rapidly growing need for substance abuse and behavioral health care in communities across New Mexico. Additionally, many health professionals are nearing retirement age while census figures show New Mexico’s population is aging, placing an increased demand for health services.

A well-rounded health professional education requires students to train inside clinical settings. This real-life practicum experience is critical to their success as practitioners upon graduation. Historically, it has been a challenge to find clinical placements for all our students and that has created a barrier to expanding many educational programs. However, in the last few years UNM Health has made significant progress expanding its clinical delivery

system by building new clinics and by opening the UNM Hospital Critical Care Tower later in 2025. With this growth in clinical settings, UNM is now primed to grow its educational programs. With more physical space to practice, UNM is able to create more student clinical rotations and spots for resident physicians to train and learn.

However, the UNM School of Medicine’s current building does not have the physical capacity to accommodate larger class sizes or additional faculty and staff.

During the 2025 New Mexico Legislative Session, UNM intends to request \$37 million to plan and design a new facility that will allow for this needed growth. A new facility will also give the School of Medicine an ability to grow student success and support services to increase retention rates, ensuring every student has the highest chances of succeeding the rigors of a medical education.

BREAKDOWN OF FUTURE UNM & NEW MEXICO HEALTH CARE NEEDS

ESTIMATED 2034 UNM OUTPATIENT GROWTH

180,000 Visits

ESTIMATED 2034 UNM INPATIENT GROWTH

265 Beds

20,000 Admissions

2,100 Hospital Staff

300 SOM Faculty

ESTIMATED 2035 NM PRACTITIONER NEED

4,230 Practitioners Needed (+2,699)

EXISTING INVESTMENTS



UNM HOSPITAL CRITICAL CARE TOWER: In 2025, UNM Hospital expects to open its new Critical Care Tower. The 684,000 square foot facility will add 96 new ICU beds, create New Mexico’s largest adult emergency department, bring 18 additional modern operating suites online, and generate hundreds of new good paying jobs.



UNM COLLEGE OF NURSING AND PUBLIC HEALTH EXCELLENCE BUILDING: In the Fall of 2024, this modern facility opened as the new home to the UNM College of Nursing and the UNM College of Population Health. Designed to be a space for community and healing, students and faculty enjoy flexible classroom spaces designed with technology to bring students in from all around the state. New modern laboratory spaces create new opportunities for discovery.



BEHAVIORAL HEALTH CRISIS CENTER: In partnership with Bernalillo County, UNM Hospital opened this facility in Summer 2024 to address critical gaps in behavioral health services. This facility offers 27/7 crisis care, creating a safe place for those in immediate need of behavioral health help and alleviating the problem of emergency rooms handling these types of cases.

A NEW SCHOOL OF MEDICINE

IMPROVING HEALTH CARE ACCESS & OUTCOMES FOR NM



NEED 1

Accommodate growth for expanded class sizes



NEED 2

Replace Fitz Hall at end of usable life with modern teaching and research spaces



NEED 3

Bring health disciplines together to learn, collaborate



NEED 4

Consolidate health sciences campus functions for more effective operations



STATE OF THE ART MEDICAL EDUCATION CLASSROOMS

Future classrooms will be designed for small group learning, but will be adaptable for multiple learning styles including active, remote, and large groups.



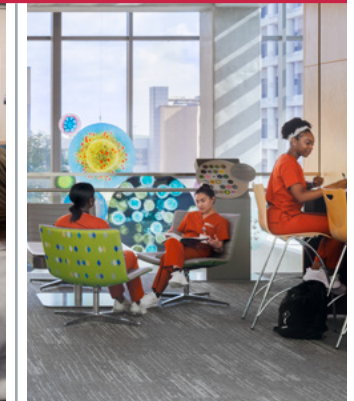
FLEXIBLE INTERDISCIPLINARY RESEARCH SPACE

In addition to wet labs and clinical research spaces, teams will also enjoy rooms designed for current and future technological learning.



SIMULATION SPACE FOR LEARNING & INNOVATION

Practicing skillsets in a simulation setting is critical to a medical education. With increased access to simulation learning, students will be able to finetune critical skills needed in a real-world environment.



SPACE FOR INTERPROFESSIONAL INTERSECTIONS

Student success is driven by their ability to form a community with each other and with their faculty and preceptors. Designs will include gathering spaces to enhance collaboration and togetherness.

The work to expand UNM Health's clinical delivery system is already underway with the opening of the new UNM Hospital Critical Care Tower and other clinics. That opens the path to now grow UNM's health sciences academic and research delivery system. With an ability to double MD graduates in the next ten years and grow all Health Professions Programs, we strongly believe we will be able to narrow the gap that currently exists between supply and demand for health professionals.

Narrowing that gap directly translates into improved health outcomes, increased health equity, and greater access to health care for New Mexicans. With more health professionals entering the workforce, a key goal includes reducing the time it takes to get an appointment with a health professional, especially in primary care. Another key goal driving this initiative is to increase the number of health professionals working in rural, Tribal, and underserved areas of the state.

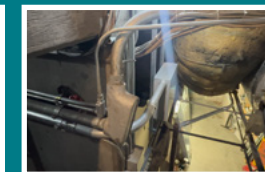
FITZ HALL - END OF LIFE



Foundation Issues



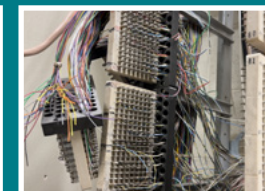
Drainage/Water Damage



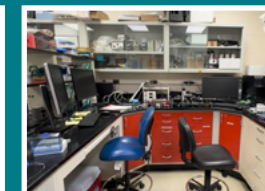
Electrical Issues/Lighting



Concrete Deteriorating



Aging IT Infrastructure



Crowded Classes/Labs

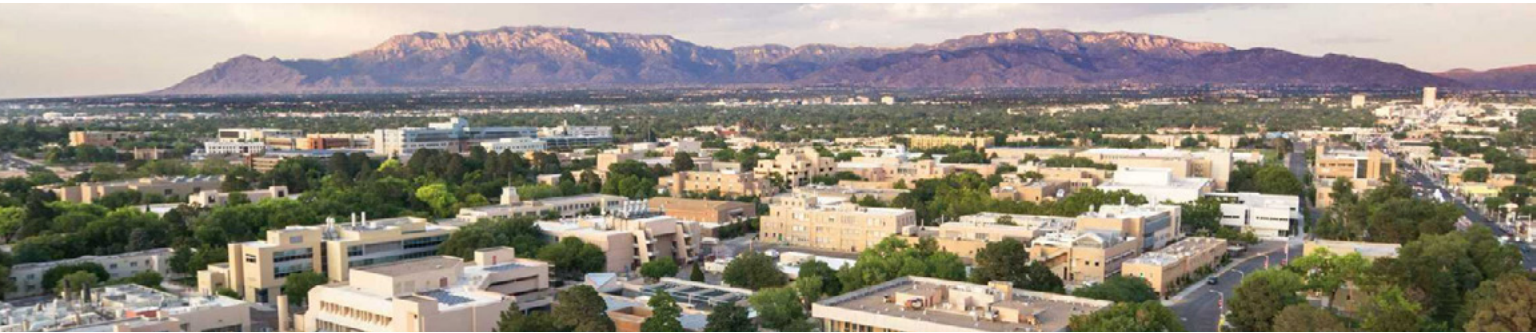
Since 1967, Fitz Hall has been home to the UNM School of Medicine. However, nearly 60 years later, the building does not meet the needs of a 21st century medical education and research facility and prohibits expansion. Engineers have informed UNM that renovating Fitz Hall is not fiscally or financially possible. Replacement is the only option.



Scan the QR Code to explore these issues or go to bit.ly/42asvkw

PROJECT TIMELINE

BUSINESS PLAN



ESTIMATED TOTAL COST: \$600,000,000

The timeline for this facility is broken up into three phases.

Phase-1 starts in 2025 as UNM works to secure \$37 million to plan and design a facility that meets the needs of today and tomorrow. Currently, architects and planners are meeting with School of Medicine leadership, faculty, and staff to understand spacing needs. How much research space is needed versus classrooms versus administrative space versus student gathering spaces? In 2026, UNM will work to procure funding through public sources and private philanthropy for construction of the facility.

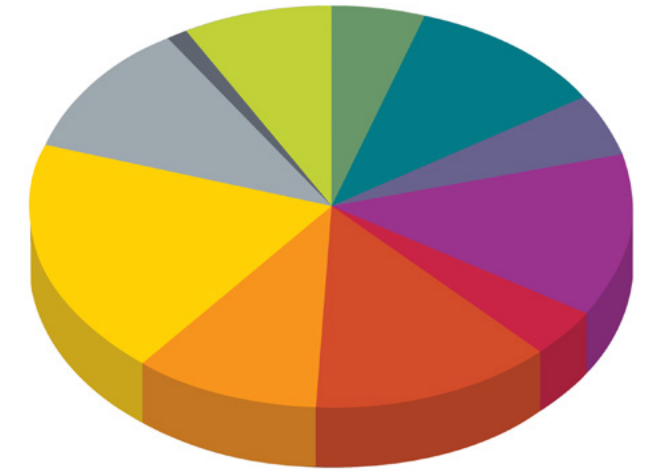
Phase-2, which we anticipate to begin in 2026, will finalize the plans and design for the layout.

Key considerations include whether the facility is better suited with a vertical design or spread out in a horizontal layout. Final decisions will be made determining the appropriate mix of the various spaces needed for academic, research, and community gathering usage.

Phase-3 includes the construction and operationalization timeframe. We anticipate construction to begin in 2027 with at least 30 months to complete. In 2029, we expect to activate the building ensuring it has all the clinical equipment, furniture and technology needed before students, faculty, and staff move in. Under our timeline, we expect the first cohort of UNM School of Medicine students to utilize the building in the Fall of 2030.

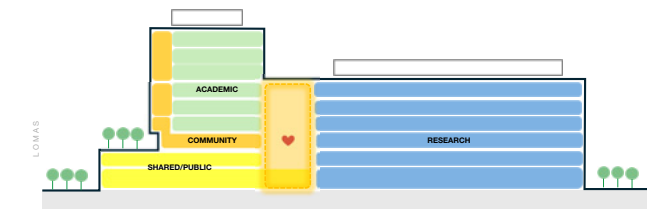
PHASE 1: FUNDING & PROCUREMENT (7 MONTHS)

- Research Administrative Space
- Building Support
- Administration
- Teaching Class Labs
- Classrooms/Event Space
- Academic Support
- Community/Shared Space & Co-Work Center
- Simulation Center
- Research Labs & Support
- Research Cores & Vivarium
- Translational Research

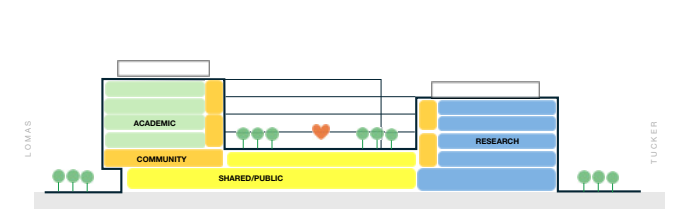


ESTIMATE OF SPACE ALLOCATION

PHASE 2: EXAMPLES OF DESIGNS (APPROX. 14 MONTHS)

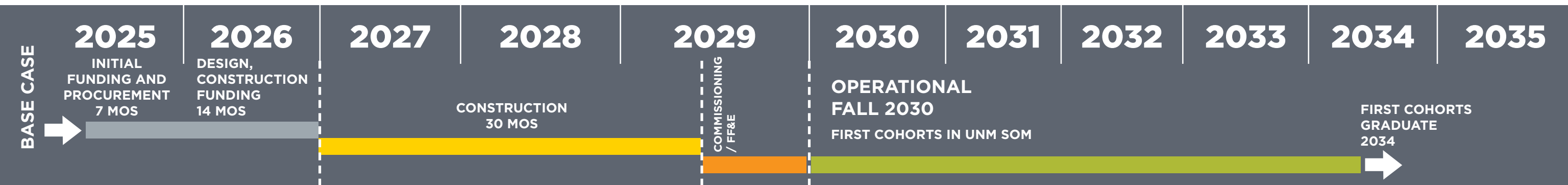


Example Design Concept A: Central Hub



Example Design Concept B: Courtyard

PHASE 3: CONSTRUCTION (30 MONTHS)



BENEFITS OF EXPANSION

FUTURE STATE AND GROWTH



Example Design Concept A: Central Hub



Example Design Concept B: Courtyard

With the growth of UNM Health’s clinical delivery system and the future growth of our academic and research capacity, New Mexico’s populations benefit greatly.

Strengthening the Health Professions Workforce:

- A majority of UNM School of Medicine students remain or return to New Mexico after graduation and training. When patients see health care providers who reflect their own communities’ cultures, languages, and ethnicities, clinicians are better able to provide the culturally competent care patients require.

Advancing Excellence in Health Sciences Education:

- With a modern facility designed specifically

for medical education, our faculty are better equipped to create a forward-thinking curriculum that integrates experiential learning, early clinical practice, and modern technology to effectively train health professions leaders.

Driving Innovation Through Research:

- The heart of scientific discovery in New Mexico is rooted in UNM. With modern research spaces and laboratories, faculty and students have a higher chance of making huge breakthroughs across multiple disciplines including medicine, public health, and environmental sciences. Modern spaces will encourage cross-disciplinary partnerships to improve health outcomes on a local, national, and global scale.

KEY CONSIDERATIONS

32 out of 33 NM counties are designated “health professionals shortage areas.”

NM’s population is aging, increasing the demand for health care.

UNM Health expanded clinical delivery capacity in the last several years.

Current UNM School of Medicine infrastructure does not allow for academic/research expansion.

New facility is required to meet NM’s health care workforce demands.

New facility estimated costs: \$37m for planning/design, \$600m for construction.

New Mexicans directly benefit from UNM’s ability to increase the number of health professionals entering the workforce.

New facility would allow UNM to double MD graduates in 10 years and grow all Health Professions Programs.



WHY NOW?

GROWING UNM EDUCATIONAL SPACE TO EXPAND CLINICAL CARE SYSTEM

To meet our state’s health care demands, UNM is uniquely positioned to play a critical, primary role in ensuring there are enough health care professionals to treat New Mexicans without long waits for appointments or long drives to receive care. UNM is seeking to take bold steps to create that needed growth, by educating and training more students, and developing new spaces that will open more beds and opportunities for New Mexicans to get the care they need.

Status Quo is Not an Option

The COVID pandemic exacerbated the health care worker gap, and if UNM does not take action now, the gap in needed health care professionals is expected to widen further, putting the health of our state in jeopardy.

The time to narrow this gap is now. Without strategic growth and critical public investments, New Mexicans’ ability to access the care they need is expected to worsen. To increase equity in health care delivery for all New Mexicans, no matter where they live, UNM must grow the number of health professional graduates, push innovation through research, continue to create more clinical delivery access points, and create the spaces needed to accommodate this accelerated growth.

New Mexico’s Return on Investment

An investment in health sciences education is a direct investment in the health of every New Mexican. Families need access to care and waiting months to see a provider is not sustainable.

UNM is positioning itself to accelerate efforts to improve health outcomes and health equity in the state we are proud to serve.



Contact: Office of Government &
Community Relations

Phone: (505) 277-1670

govrel@unm.edu

