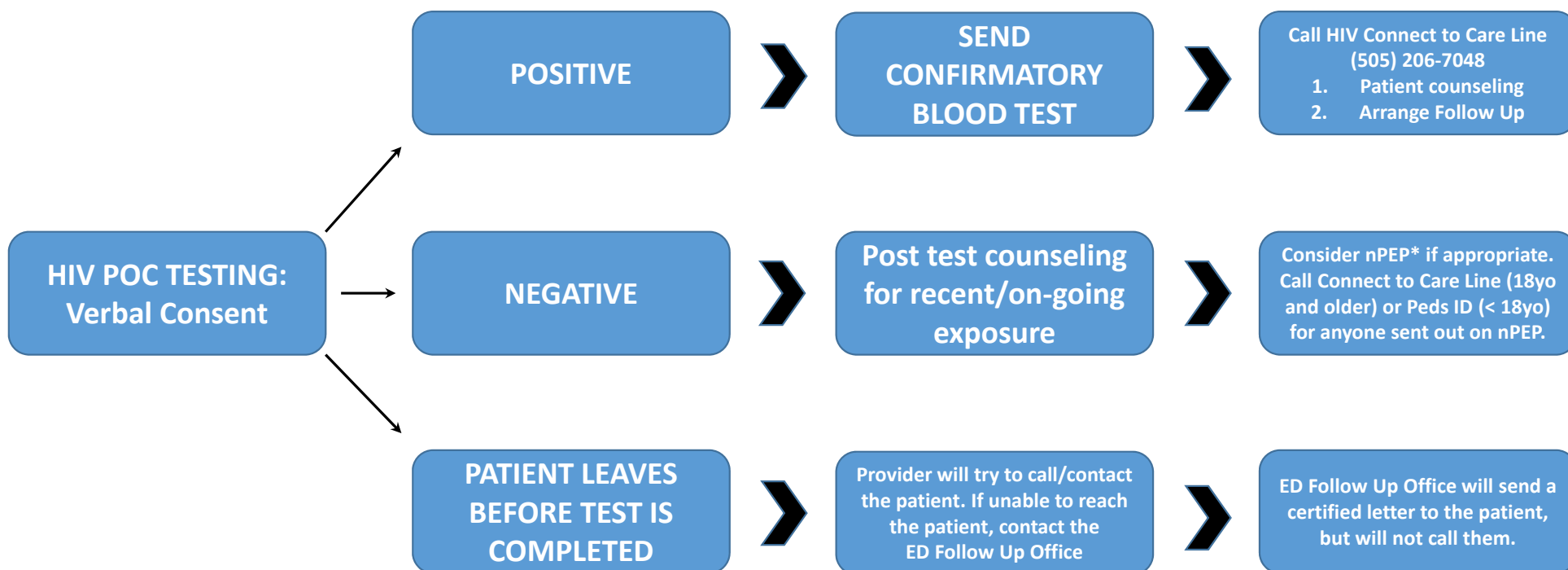


HIV Point of Care Testing for the UNMH Adult and Peds ED for Patients 13yrs and Older



*Refer to [Clinical Resources for HIV Prevention after Sexual Assault](#), if indicated for your patient. Any patient discharged on nPEP for any indication must have clinic follow up at 1 week and again at 4 weeks. Call the Connect to Care Line to help set up follow up. See [nPEP Discharge Instructions](#) for a list of clinic names that have agreed to see these patients. Patients under the age of 18 should be referred to UNM Pediatric Infectious Disease for either a positive POC HIV test OR if discharged on nPEP. Only positive confirmatory HIV tests will be reported to NMDOH through the normal reporting procedures at Tricore.