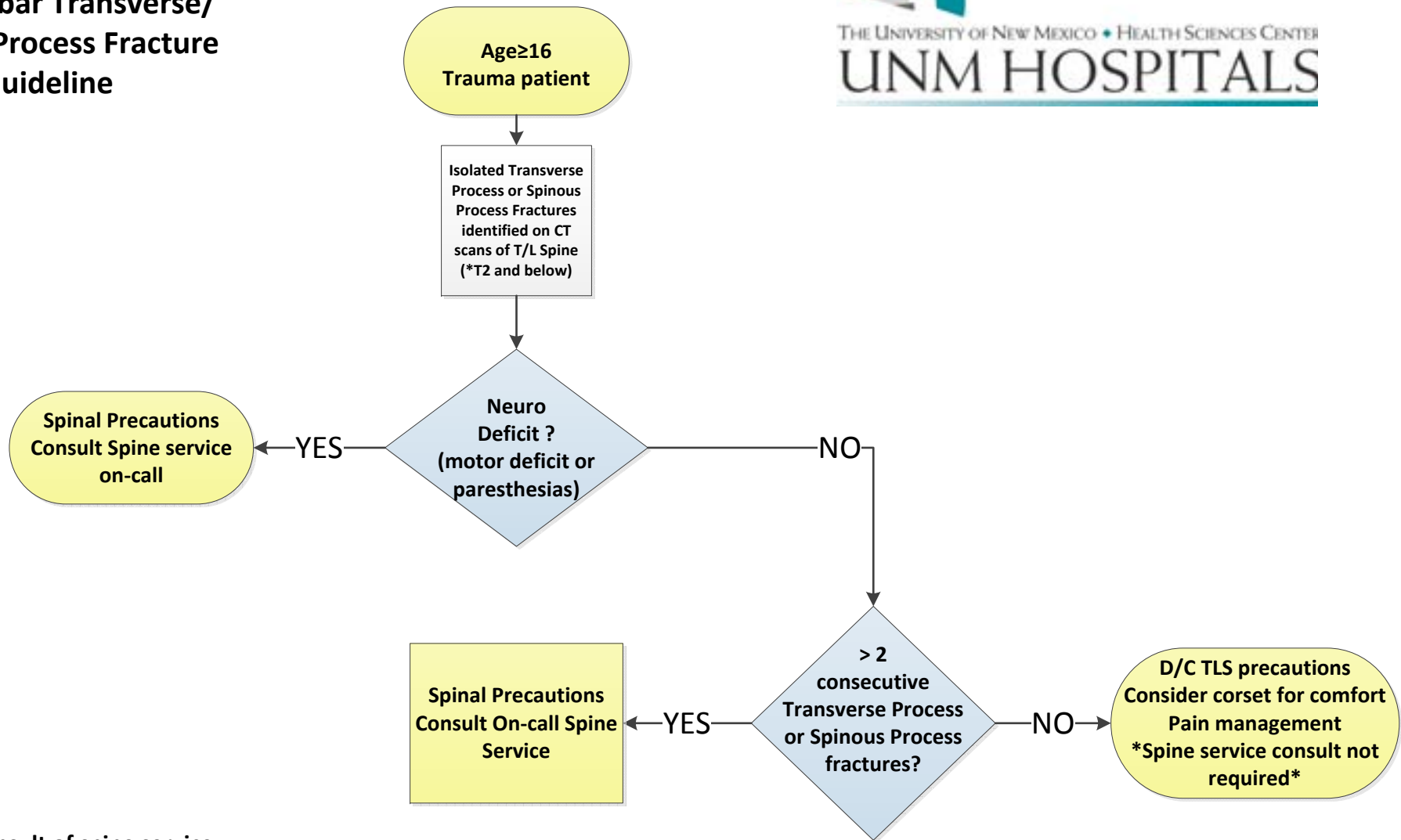


UNMH Isolated Thoracic and Lumbar Transverse/Spinous Process Fracture Guideline



***Consult of spine service recommended for any Transverse or Spinous Process fractures above the level of T2 and any spine fracture in children under 16**

Stephen Lu, MD
Martina Stippler, MD
Andrew Paterson, MD
A. Robb McLean, MD