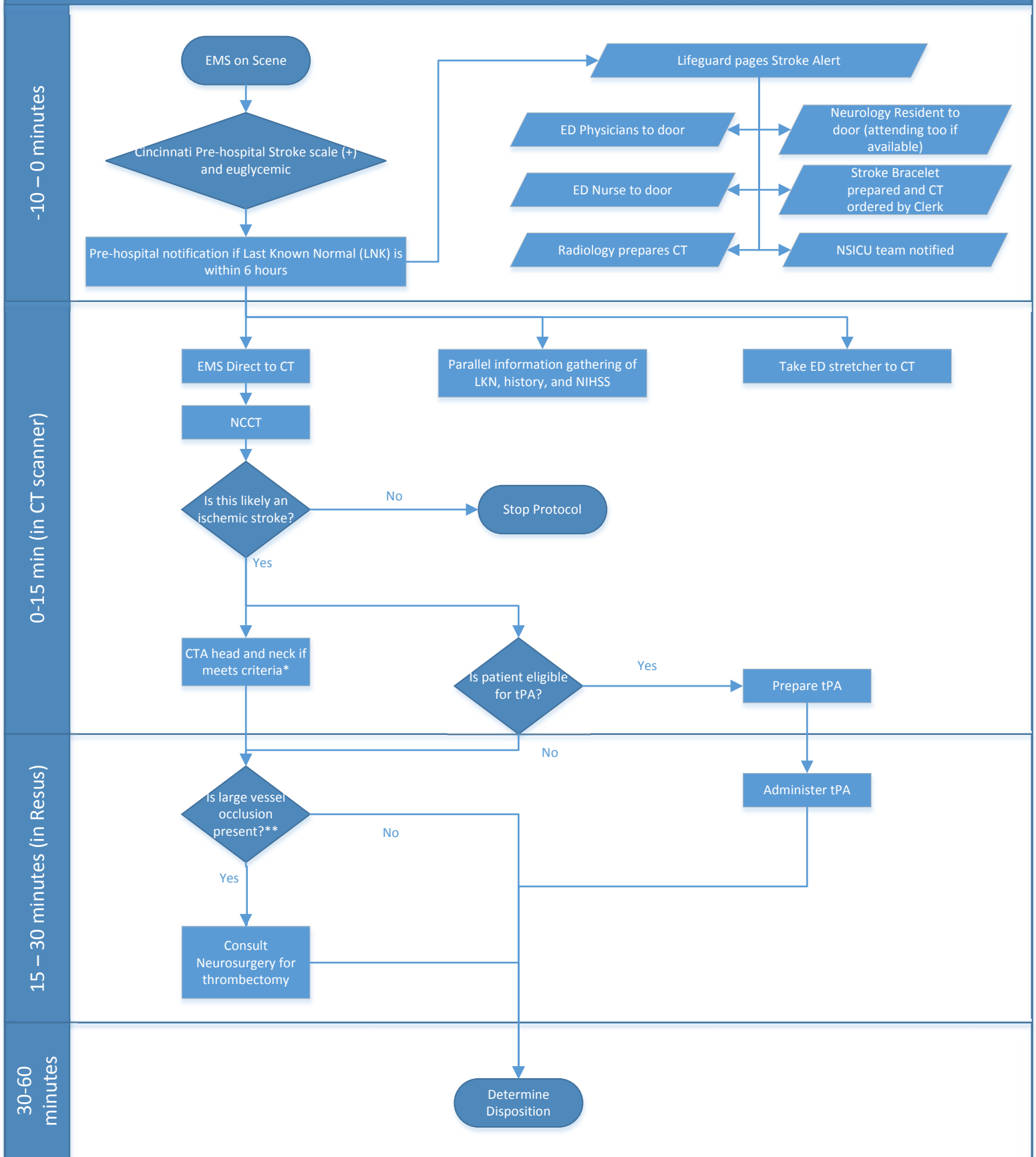


Acute Stroke Protocol (via EMS)



*CTA criteria: (need all 4)

- 1) NIHSS ≥ 6 , or concern for Large Vessel Occlusion
- 2) pre-stroke mRS score 0-1 (functionally independent)
- 3) ASPECT score ≥ 6
- 4) Groin puncture can occur within 6 hours of symptom onset

**Large vessel occlusion:

ICA, M1, M2, A1, vertebral, or basilar