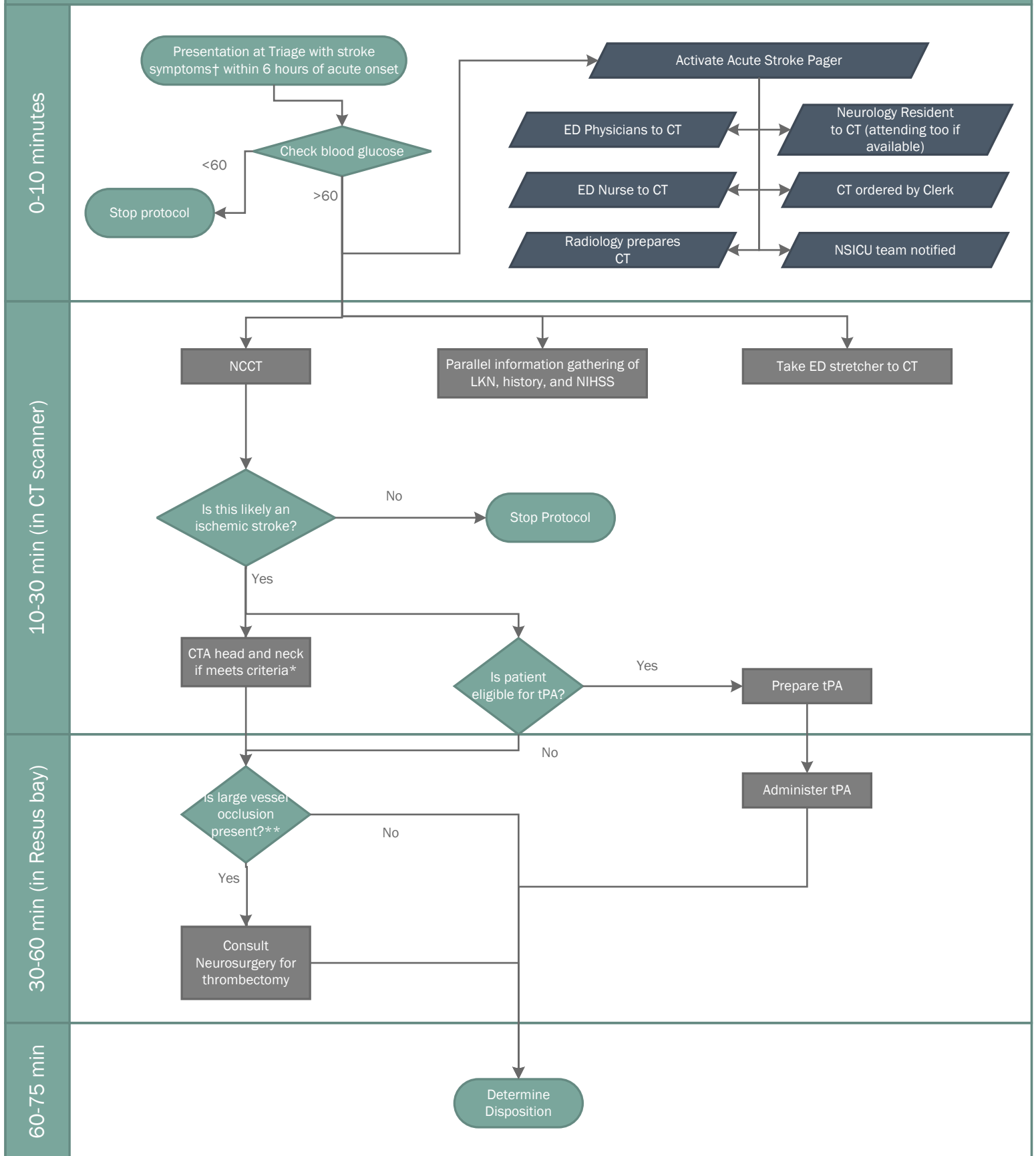


Acute Stroke Protocol (from Triage)



†Stroke symptoms:
Examples include, but not limited to Unilateral weakness or numbness, difficulty with speech, visual field cut, gaze preference, dizziness

*CTA criteria: (need all 4)
 1) NIHSS ≥ 6 , or concern for Large Vessel Occlusion
 2) pre-stroke mRS score 0-1
 3) ASPECT score ≥ 6
 4) Groin puncture can occur within 6 hours of symptom onset

**Large vessel occlusion:
ICA, M1, M2, A1, vertebral, basilar