

*Path*FINDER

SUMMER 2024



SCHOOL OF
MEDICINE
PATHOLOGY

PathFINDER

Welcome to our Summer 2024 edition of the *PathFINDER*, our Department of Pathology semiannual news magazine. We are having a lovely summer monsoon season, with lots of evening rainstorms producing a lush green desert and mountain environment for us to enjoy in these summer months. This edition commemorates our graduates in all of our various educational areas and welcomes our new trainees from Medical Laboratory Science students, medical students, residents, fellows, graduate students, and postdocs.

We focus on the George D. Montoya Research Scholarship Fund for research scientists in training. George was a research scientific manager in a number of labs and passed unexpectedly in 2011. This article was written by George's family and tracks the role George played in our department as a generous, supportive, and kind mentor to trainees at all levels in the laboratory. This endowment annually awards deserving graduate students to alleviate their financial pressures. The Montoya family has a key role in choosing award recipients.

There is a feature from Dr. Jay Raval, Director of Transfusion Medicine and Therapeutic Pathology, and our Vice Chair for Clinical Affairs. Dr. Raval describes the new directions his laboratory is taking in being part of UNM and the UNM Cancer Center offering advanced therapeutics in hematologic malignancies. No longer do patients need to leave New Mexico to receive state of the art therapies.

In this edition, we honor the passing of two members of our department. Dr. Mario Kornfield had a long and productive career in UNM Pathology, joining the department in 1968 as one of its founding members. Although he retired in 1998, as a professor emeritus he continued to have a presence in our department with mentoring and education. We also honor Ryan Tanner, a Pathology staff member who had a key role in many areas of our department over the years. Both will be missed.

We are proud to report on our recent resident and clinical fellow graduates. Several are staying here at UNM for further training and others are off to other locations to continue their careers. Highlighted are the recipients of resident, fellow, and faculty awards for their significant contributions to excellence in teaching and mentorship. We are also proud of our graduating Medical Laboratory Science students who are off to jobs as medical

laboratorians, much needed and critical medical professionals. Kudos to the Medical Laboratory Science faculty who brought them to this successful point in their careers. Please note in the Faculty News section our 2024 promoted faculty, faculty recently retired, and please welcome our newly hired faculty joining our collegial faculty group.

Thank you to all our current and past departmental members for all you do to keep our department thriving. I am grateful for our staff, trainees, and faculty as we show continued progress in our missions of clinical service, education, and research.

Wishing you a relaxing and fulfilling summer with safe travels.

NANCY JOSTE, MD, MS
Professor & Chair of Pathology



SUMMER 2024

1. WELCOME FROM NANCY JOSTE, MD, PROFESSOR & CHAIR
3. FEATURE: GEORGE D. MONTOYA RESEARCH SCHOLARSHIP UPDATE
7. FEATURE: CELLULAR THERAPIES TREATMENT, JAY S. RAVAL, MD
9. IN MEMORY
11. CLINICAL FELLOWSHIPS GRADUATION & WELCOME
20. RESIDENT GRADUATION & NEW RESIDENTS
26. MEDICAL LABORATORY SCIENCES GRADUATES
27. FACULTY NEWS
29. DEPARTMENT NEWS
31. MAKE A GIFT

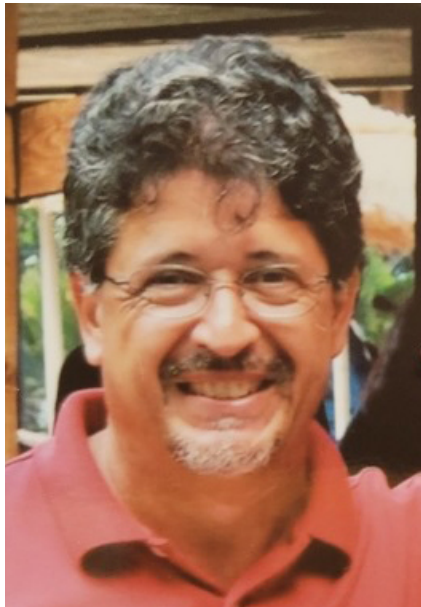
Please follow us on [Facebook](#), [Instagram](#) and [X](#).

Cover image: UNM Sandoval Regional Medical Center is a finalist for the "Top 20 Most Beautiful Hospitals in the U.S." The Rio Rancho hospital's spectacular views of the majestic Sandia Mountains from nearly every patient's room, its floor to ceiling windows, and its critical role as a Level-III Trauma Center for rural and Tribal communities make it a top contender in the contest.

FEATURE

UPDATE ON THE GEORGE D. MONTOYA RESEARCH SCHOLARSHIP FUND

BY THE FAMILY OF GEORGE D. MONTOYA



"Every year as we read the applications, we see and feel our father through each of the candidates that apply. They possess the same characteristics as our father: the passion for research, paying it forward, giving back to the community, and love for the University."

Members of the Montoya Family:

- o Eileen Montoya, wife
- o David Montoya (son) and Kelly Moya (David's girlfriend)
- o Danny Montoya (son), Kera (daughter-in-law), Micah, Cruz, Asher (grandsons)
- o Donnie Montoya (son), Sadee (daughter-in-law), Amelia and Sawyer (granddaughters)
- o Rachel Ulloa (daughter), Martin (son-in-law), Luca and George (grandsons)

How was the endowment initiated?

George Montoya spent 31 years at the UNM Health Sciences Center, School of Medicine, Department of Pathology, first as a technologist and then as a scientific manager. Throughout his career he mentored numerous medical students, technologists, graduate students, post-docs and residents. He was a beloved father, husband, brother, uncle, and member of the Pathology Department, as well as the community. He had a positive impact on just about everyone he ever met.

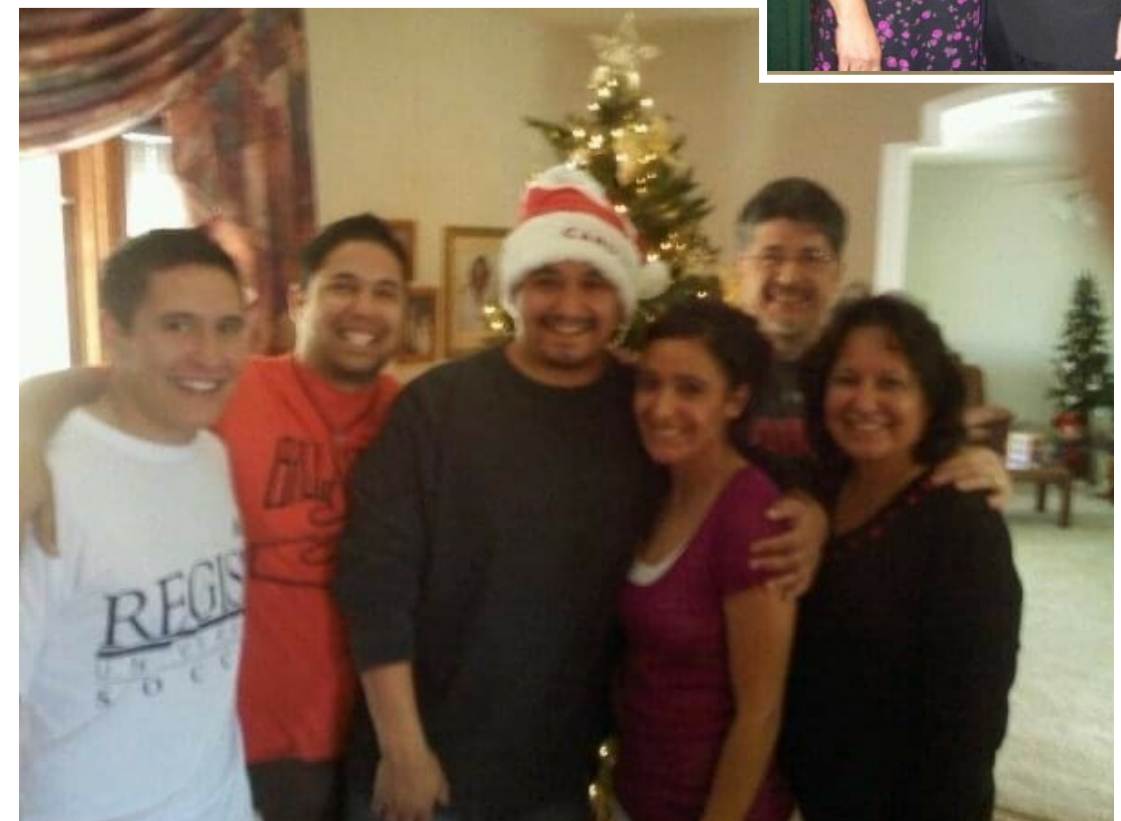
The endowment was started shortly after our father's passing on April 16, 2011. The Montoya family, friends and the UNM Pathology Department stepped up to help create this scholarship opportunity. Dr. Tom Williams and his wife Maggie came by our home to give their condolences the night Dad passed away. It was that same night that Dr. Williams committed to developing a permanent endowment through the UNM Department of Pathology, and that he would work together with the family to establish it. In the Fall of 2011, we used the UNM Woman's home soccer game (daughter, Rachel, was a player) to help kickstart the donations, with many family members and friends contributing over the years. We are heartened to see people continuing to donate regularly.

What was the initial goal for the endowment and has it changed over time?

The initial goal for the endowment was to keep our father's memory alive and for the scholarship to become self-sustaining. Our father was a great teacher and mentor in the Pathology Department and School of Medicine, and our hope was that this scholarship would be given out to an individual or multiple individuals every year to help with school expenses, conferences, trainings, etc. The goal is for this endowment to continue to grow each year and provide large scholarships annually.

How would you describe the benefits to the trainees and the department?

We believe the scholarship helps the trainees by alleviating some of the financial stresses that come with pursuing their career dreams in the medical field or medical research. We hope that this scholarship allows UNM to benefit by the trainees staying at, or returning to, UNM, and giving them the opportunity to give back to the school through their work and/or mentorship. Through this permanent endowment we are hoping more students choose UNM as a long-term career path, like our father who worked at UNM for 31 years.



- continued on next page -

What have been your favorite moments?

- ▶ Being able to continue our father's legacy. He passed away 13 years ago in April, and as we meet individuals through this scholarship, they continue to express how he changed their lives. He helped many individuals achieve becoming a doctor, a nurse, medical researcher and more. They are now practicing at UNM or around the world trying to make a difference.
- ▶ Talking to the applicants and recipients of the award. They have been so grateful for the opportunity and wanted to know more about our father.
- ▶ Serving on the selection committee has been a heart-warming experience. Family members have been involved with the selection committee for the past four years. Every year as we read the applications, we see and feel our father through each of the candidates that apply. They possess the same characteristics as our father: the passion for research, paying it forward, giving back to the community, and love for the University.
- ▶ Seeing our Dad's old colleagues and mentors still be involved and show up each year for the scholarship award. It is very rewarding knowing how many people's lives he touched, and how his spirit is still living on today.

What do you envision the future of the Montoya endowment?

We envision the Montoya endowment living on in perpetuity, and continuing to grow in value, allowing larger amounts of scholarship payout, benefiting multiple students each year. As we continue to lose great staff, leaders, and mentors at UNM who shared the same values as our father, such as Dr. Thomas Williams, maybe this scholarship can continue to grow and be a tribute to all the great mentors that have passed and who have paved the paths of our future doctors, scientists, nurses, and researchers. It is also important that this endowment helps to retain great talent in the state of New Mexico, and for them to continue to give back to their communities like our father did.



Highlights from The University of New Mexico Foundation

Since 2012, the George D. Montoya Research Scholarship has benefited 18 students pursuing graduate studies and careers in research. Each year the scholarship is awarded to undergraduate and/or graduate students in recognition of their exceptional research and aspirations.

HIGHLIGHTS:

- Start date April, 2012
- Montoya family initial commitment \$11,617
- Departmental funds committed to fulfill endowment: \$25,000
- Individual donors: 44
- Number of gifts to the fund: 502 (includes numerous monthly gifts)

The Montoya Family and the Department of Pathology welcome gifts in honor of George's legacy and his passion for education and research at the University of New Mexico. Your gift helps to encourage careers in research.



FEATURE

EXPANSION OF ADVANCED CELLULAR THERAPIES TREATMENT

MEETING THE NEED IN NEW MEXICO

BY JAY S. RAVAL, MD, PROFESSOR

Autologous and allogeneic stem cell transplants have been used to treat a variety of conditions, primarily hematologic, in both adults and children for decades. However, in recent years the field of cellular therapies has expanded considerably. The application of modified immune cells to target cancer has provided hope to those who previously had exhausted all other treatment options. Therapies such as CAR T-cells, tumor-infiltrating lymphocytes, CAR NK-cells, and others are either already FDA-approved or in active clinical trials. Patients who suffer from life-threatening conditions now can be treated with these remarkable new therapies.

Such patients who could benefit from all these treatments are certainly present here in our state of New Mexico. Since 2016, UNMH has been the only center in the state performing autologous stem cell collections and transplants. While this was a significant step for our health care system and population, patients with conditions requiring therapies that are more complicated still needed to leave the state to receive these. However, not all of our patients and their families could pursue these options due to financial restrictions, social limitations, or other reasons – thus, unmet needs existed. Furthermore, for the autologous transplants we were performing, the apheresis-collected stem cells needed to be shipped across state lines to a cellular processing laboratory in Arizona for characterization, enumeration, cryopreservation, and storage before being shipped back to us for thawing and transplantation. This created concerns surrounding transportation and product integrity.

However, there are plans to address these unmet needs and concerns. UNMH and the Comprehensive Cancer Center have supported the initiatives of the Bone Marrow Transplant Program to perform allogeneic stem cell apheresis collections and transplants at our institution. They also approved the design and construction of UNMH's first-ever Cellular Therapies Laboratory to provide on-site processing, cryopreservation, and storage of stem cell products. Excitingly, our institution is onboarding commercial, FDA-approved CAR T-cell therapies for leukemia, lymphoma, and myeloma. With all these therapies, New Mexicans can now receive advanced therapies in New Mexico.

None of this would be possible without the amazing team here at UNMH and the Comprehensive Cancer Center. The physicians, nurses, specialists, technologists, and allied health professionals and staff in Hematology-Oncology, Transfusion Medicine and Therapeutic Pathology, Therapeutic Apheresis, and the Cellular Therapies Laboratory, in addition to the various supporting clinical teams such as Interventional Radiology, all have vital roles to ensure patients receive excellent care from screening to collection and transplant to post-engraftment outpatient monitoring and care. The executive leadership and directors at UNMH and the Comprehensive Cancer Center deserve recognition and appreciation for their commitment to supporting these initiatives. Their approval of the construction of the Therapeutic Apheresis Program Clinic in 2021 and the Cellular Therapies

Laboratory in 2023, as well as the many things needed to support recipients of these therapies in the hospital and outpatient clinics, have increased our ability to care for the patients of our state even more fully.

Last but definitely not least, UNM Pathology and TriCore Reference Laboratory interfaces intimately with all of the clinical operations of the Bone Marrow Transplant Program. The physicians, specialists, and technologists in Hematopathology, Histocompatibility and Immunogenetics, Flow Cytometry, Microbiology, Clinical Chemistry, Blood Bank, Hematology, Molecular Pathology, Immunology, Cytogenetics – even Anatomic Pathology when non-hematologic tissues are involved – and other operational areas of our laboratory and organization all help to support the clinical program and patients receive the best possible care. Thank you for everything you do.

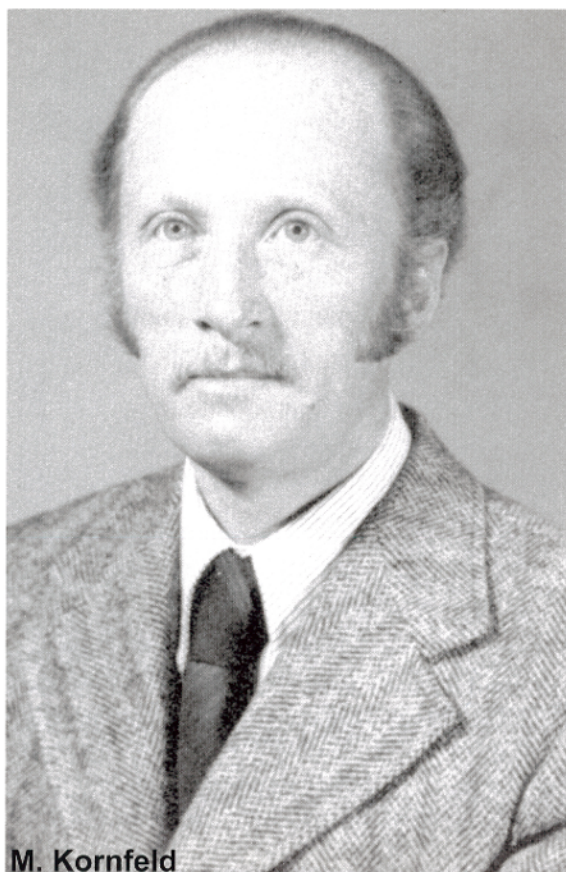
In the coming years, even more unique products will be available for patients with different or more advanced illnesses. Innovations in cellular therapies to treat conditions such as hematologic and solid organ malignancies, autoimmune diseases, and infections (to name but a few) are actively being developed and trialed. With the infrastructure, systems, and personnel in place here at UNMH and the Comprehensive Cancer Center, we are well poised to be early adopters of these remarkable therapies.



IN MEMORY

DR. MARIO KORNFELD

1927 - 2024



Dr. Mario Kornfeld, born in Zagreb, Yugoslavia (now Croatia) on 9 July 1927, died in his home on 20 April 2024. Much of his life took place in Zagreb. He spent WWII in Zagreb and graduated from high school in 1945. Subsequently he entered the University of Zagreb Medical School (1946-1953), where he met his future spouse, Asja Nezic. The Kornfelds had one son, Marcel, now an anthropology professor at the University of Wyoming in Laramie, Wyoming. After medical school, Mario served an obligatory military term from 1953-1954.

In 1954-1955 Dr. Kornfeld was an intern at the University Hospital in Zagreb, and subsequently received his medical license in 1955. From 1955 to 1959 he was a resident in general pathology at the Institute of Pathology, General Hospital in Zagreb and after training stayed on as a staff pathologist where he performed autopsies throughout the region. To further his medical career, he continued his education and, in 1964,

he earned his Doctor of Science (M.Sc.D.) degree at the University of Zagreb. Several months later, Dr. Kornfeld was awarded a fellowship in neuropathology at Columbia University in New York. He then embarked on a fateful journey to the United States, with his wife Asja, also an MD, and their son.

From 1964 to 1967 Dr. Kornfeld was a fellow at the Division of Neuropathology, College of Physicians and Surgeons of Columbia University in New York, continuing on at Columbia as an instructor from 1967-1968. In 1968, the newly created and growing University of New Mexico School of Medical recruited him for his specialization in neuropathology. At that time, UNM offered support for gaining permanent residency status, which allowed Dr. Kornfeld and his family to remain in the United States.

Dr. Kornfeld joined the UNM's School of Medicine Department of Pathology in 1968 as an assistant professor. In 1970 he was promoted to associate professor and in 1980 to full professor. After retirement in 1998 he became professor emeritus until his death. He actively participated in the growth of the department and the School of Medicine from its inception to 2014 (some 46 years). Although he retired in 1998, he remained active on campus, with an office at the New Mexico Office of the Medical Investigator and remained intellectually active until his death. During his career Kornfeld published over 100 articles in professional journals. Students, staff, and colleagues frequently refer to his kindness and expertise, while students appreciated his mentoring activities. He leaves a legacy of having taught neuropathology to virtually every UNM medical school student from 1968 to the later 2000s!

The Kornfelds frequently travelled in the US and Europe and enjoyed hiking and skiing. They appreciated classical music and often attended concerts at Popejoy Hall and the Santa Fe Opera. Dr. Mario Kornfeld was a dedicated neuropathologist, an excellent educator and mentor, and a kind and gracious man. We remember him fondly and he will be missed.

Excerpts from obituary published by Albuquerque Journal on May 19, 2024.

RYAN TANNER

It is with great sadness that we pass on the news of the sudden passing of Ryan Tanner in June 2024. Ryan worked for many years as administrative support in the Pathology Department, notably including 15+ years as the lead administrator for the New Mexico Spatiotemporal Modeling Center (STMC). He worked closely with STMC leadership, including Janet Oliver, PhD, Bridget Wilson, PhD, and Diane Lidke, PhD, as well as the entire group of STMC faculty, staff and trainees.

Ryan was particularly adept at coordinating seminars and local meetings and contributed hugely to the STMC's annual outreach event, the Art of Systems Biology and Nanoscience. He was superb at navigating the complexities of grant submissions and management. Ryan will be especially remembered for excellent support to graduate students and postdoctoral trainees. After his service to the STMC, Ryan held a number of UNM administrative positions including for the Center for Molecular Discovery and the Department of Pediatrics.

Services were held on Saturday, June 15th, in Shiprock, New Mexico.

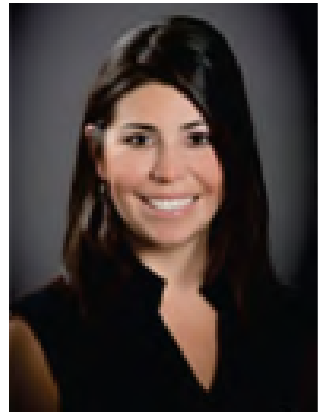
FELLOWSHIPS

CYTOPATHOLOGY

BY NADJA FALK, MD, ASSOCIATE PROFESSOR, DIRECTOR CYTOPATHOLOGY FELLOWSHIP PROGRAM

Troy Tenney, DO

The University of New Mexico Department of Pathology is pleased to recognize our graduating cytopathology fellow, Dr. Troy Tenney. After his AP / CP pathology residency at Emory University, where he also served as chief resident, he completed a gynecologic pathology fellowship at Stanford University. During fellowship this year, Dr. Tenney was very active in the gynecologic oncologic tumor boards, where his previous fellowship truly helped him shine. In addition, he had a USCAP podium presentation this academic year discussing SUMP salivary gland lesion classification with Dr. Agarwal. Not only has Dr. Tenney honed his diagnostic skills and become outstanding at performing ultrasound-guided fine needle aspirations, he was also hard at work teaching residents and medical students and improving the service overall. Dr. Tenney will be staying in academic medicine as an assistant professor at The University of Arizona College of Medicine, Tucson.



Please welcome our incoming 2024-25 Cytopathology Fellow:

Mary Torrez, MD

Degree: MD from The University of New Mexico, School of Medicine

AP/CP Residency: The University of New Mexico, School of Medicine

Mary is coming from her surgical pathology fellowship at University of Michigan, Ann Arbor, Michigan

FELLOWSHIPS

HEMATOPATHOLOGY

BY DANIEL BABU, MD, ASSOCIATE PROFESSOR, DIRECTOR HEMATOPATHOLOGY FELLOWSHIP PROGRAM

The UNM Hematopathology division is happy to recognize this year's phenomenal class of fellows. The group delivered top notch care to patients both local and nationwide, participated in resident and medical school teaching, and presented many outstanding interesting case conferences and scholarly works throughout the year. They continue to be the lifeblood of the clinical services at TriCore Reference Labs, often coordinating testing among various laboratories and communicating across multiple health systems. Throughout the year, the group honed their diagnostic skills and rose to the occasion with progressive graduated responsibility. We thank them for their outstanding work this year and wish them all the best in the next phase of their careers!



Ryan Braunberger, MD

Dr. Braunberger, originally from Montana, earned his MD from the University of Washington in Seattle and made his way to UNM for AP/CP residency, where he participated in numerous projects, including HHV8-negative effusion based large B-cell lymphomas and plasmacytoid dendritic cell phenotypes. He gave presentations on the difficulty of monocyte evaluations and mechanisms of CD20 resistance in B-cell lymphomas. He worked on the validation of a new cytochemical myeloperoxidase stain which will be revived at TriCore Reference Labs. Ryan and his family will be moving to Billings, MT, where he'll be joining Yellowstone Pathology group.



Austin Green, MD

Dr. Green, originally from South Bend, Indiana, and completed his undergraduate and medical school studies at Indiana University. He actually spent a year as an internal medicine intern at UNM before entering AP/CP residency at University of Washington. During his fellowship year he helped develop a protocol for cytochemical myeloperoxidase staining. Austin also presented a Tumor Marker conference on the hematopathologist's "guide" to the treatment of hematolymphoid neoplasms and gave a journal club presentation on IHC developments in mature T and NK cell neoplasms. Given his interest in cutaneous lymphomas, it seems only natural that his next step is a dermatopathology fellowship at Indiana University!



Clayton Kibler, MD

Dr. Kibler, originally from the Houston, TX area, completed his undergraduate studies at The University of Texas at Austin with high honors and earned his MD at UTMB in Galveston, TX. He made his way to UNM for AP/CP residency training and built upon his publication record, which includes a recent chapter with Dr. Chabot-Richards on the molecular pathology of leukemia in the book Molecular Surgical Pathology. During his fellowship year he gave a Tumor Marker presentation on new genetic sub-entities of AML and a journal club presentation on the determination of bone marrow cellularity. Luckily for everyone at TriCore Reference Labs, Clay will be staying on another year as a molecular genetic pathology fellow!



Amirah Kuzu, MD

Dr. Kuzu, originally from Texas, completed her undergraduate studies in neuroscience at University of Texas at Dallas, and later earned her MD at Texas Tech University Health Sciences Center in El Paso where one of her mentors was Dr. Daniel Bustamante, a former UNM resident and fellow. She completed AP/CP residency at Orlando Health in Florida. During her fellowship year she gave presentations on the assessment of bone marrow fibrosis and on novel flow cytometric approaches in the diagnosis of Hodgkin lymphoma. She also served on the AP Didactics Taskforce in our department, and participated in a QI project to assess the quality of bone marrow samplings. After fellowship, Amirah will be heading off to Ashland, KY, to start a position with a private practice group.

Please welcome our new 2024-25 Hematopathology fellows:



Obianuju Mercy Anelo, MD

Degree: MD from Saba University SOM, Saba, Caribbean Netherlands

AP/CP Residency: University of Tennessee HSC, Memphis, Tennessee

Coming from Memphis, Tennessee



Donald Mignogna III, MD

Degree: MD from Geisinger Commonwealth SOM, Scranton, Pennsylvania

AP/CP Residency: University of Louisville, Kentucky

Coming from Louisville, Kentucky



Caitlin Porter-Smith, DO

Degree: DO from Penrose-St. Francis Hospitals, Parker, Colorado

AP/CP Residency: Rocky Vista University COM, Colorado Springs, Colorado

Coming here from Colorado Springs, Colorado



Jessie Xiong, MD

Degree: MD from University of North Carolina at Chapel Hill

AP/CP Residency: University of Colorado Anschutz Medical Campus, Aurora, Colorado

Coming from Aurora, Colorado



FELLOWSHIPS

FORENSIC PATHOLOGY

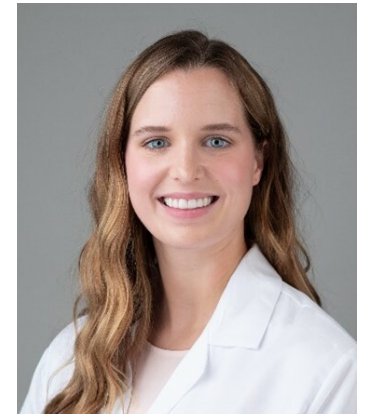
BY DR. LAUREN DVORCAK, ASSOCIATE PROFESSOR, ASSISTANT CHIEF MEDICAL INVESTIGATOR, DIRECTOR FORENSIC PATHOLOGY FELLOWSHIP PROGRAM

The Office of the Medical Investigator (OMI) is honored to have the opportunity to recognize this year's fantastic class of forensic pathology fellows. This group has been an integral part in meeting the State of New Mexico's demanding decedent care needs. The forensic fellows this year delivered high-quality patient care, maintained impressive case turnaround statistics, presented educational and scholarly material in numerous OMI conferences (including training for deputy medical investigators), participated in NAME accreditation, provided expert witness testimony, participated in mock depositions with students from the UNM School of Law, and handled all aspects of a wide variety of complex, often high-profile cases with utmost care and integrity.

The following are a compilation of anecdotes and comments about our fellows from OMI faculty.

Kristan Abernathy, MD

Dr. Kristan Abernathy received her medical degree from the University of South Carolina School of Medicine, and completed her combined anatomic and clinical pathology residency at the University of Virginia. Dr. Abernathy not only has a sharp eye and thorough approach to all aspects of autopsy case management, but she may be the most organized fellow to ever grace OMI. One look at her autopsy diagrams leaves you wondering if she secretly has a pocket typewriter for all her notes instead of actually handwriting them. All kidding aside, Dr. Abernathy routinely took the most complex, difficult, and high-profile pediatric cases, earning her stripes, so to speak, by synthesizing odd findings and zebra-esque diagnoses into something the public could easily understand. Dr. Abernathy will be missed as she leaves New Mexico for the Midwest, and joins the Montgomery County Coroner's Office in Dayton, OH.



Allison Hade, DO

Dr. Allison Hade received her medical degree from Des Moines University College of Osteopathic Medicine. She has been in New Mexico for the past 5 years, first completing the combined anatomic and clinical pathology residency here at the University of New Mexico School of Medicine, and staying on for fellowship at OMI. Not only is Dr. Hade the most likely to show up to work in something completely handmade, she has a way of breathing life into the every day operations, where every story we hear otherwise ends the same way. She has an uncanny ability to find the positive when faced with challenges, and never fails to ensure her peers smile a bit, especially with her creative language skills. Dr. Hade will be missed much more than a skosh, as she makes her way back home to join the Iowa Office of the State Medical Examiner.



Cassie MacRae, MD

Dr. Cassie MacRae earned her medical degree from the Royal College of Surgeons (Ireland). She completed a combined anatomic and clinical pathology residency at the Beth Israel Deaconess Medical Center/Harvard Medical School Program. She then completed a neuropathology fellowship at Mass General Brigham and Boston Children’s Hospital prior to joining us at OMI. Dr. MacRae is the fellow this year that takes the “work-hard, play-hard” motto to heart. A normal weekend for Dr. MacRae is traveling to Texas to complete an Iron Man, finishing in the top 5, then coming back to work the next day like nothing happened, tackling an officer-involved multiple gunshot wound case, as if it’s just another Monday. Dr. MacRae also brought this cohort of fellows much appreciated expertise in neuropathology, contributing a fund of knowledge that interplays daily with forensic pathology practice. Dr. MacRae will be missed as she returns home to Canada at the completion of fellowship, joining the forensic pathologists at the Alberta Office of the Chief Medical Examiner in Calgary.



David Negrete, MD

Dr. David Negrete completed his medical degree at Loma Linda University School of Medicine and completed a combined anatomic and clinical pathology residency at Cedars Sinai Medical Center. During fellowship, Dr. Negrete handled a variety of interesting and complex cases, but took a special interest in all things heart-related. He is the most likely fellow to find every minute trace of the obscure, and sometimes not-so-obscure cardiac pathology in his cases. Affairs of the heart aside, he may also have gained a reputation by somehow (coincidentally?) avoiding saving brains for neuropathology conference like the plague. We know where your interests lie, Dr. Negrete, but they will serve you well, and he will be missed as he joins the forensic pathology team at the Sacramento County Coroner’s Office, in Sacramento, CA. .



Please welcome our new 2024-25 Forensic Fellows:

Christopher Cormier, DO

Degree: DO from Rocky Vista University (RVUCOM)
AP/CP Residency: The University of New Mexico, SOM
Staying here in Albuquerque, New Mexico



Mariah Hukins, MD

Degree: MD from University of North Carolina, Chapel Hill SOM
AP/CP Residency: The University of New Mexico, SOM
Staying here in Albuquerque, New Mexico



Kelly Hynes, DO

Degree: DO from Ohio University Heritage COM
AP/CP Residency: The University of New Mexico, SOM
Staying here in Albuquerque, New Mexico



Monica Miyakawa-Liu, MD, MS

Degree: MD from University of Queensland School of Medicine
AP/CP Residency: Stanford Health Care
Coming from San Marino, California



FELLOWSHIPS

MOLECULAR GENETIC PATHOLOGY

BY DEVON CHABOT-RICHARDS, MD, PROFESSOR, DIRECTOR MOLECULAR GENETIC PATHOLOGY FELLOWSHIP PROGRAM



Ryan Rebbe, MD

Dr. Rebbe earned his MD at St. George's University, followed by an Anatomic and Clinical Pathology residency at the University of New Mexico, during which he served as chief resident and was recipient of the 2023 Resident Teaching Award. During his molecular fellowship, Ryan has continued to develop his love of neuropathology, delving into molecular changes seen in central nervous system tumors and the role of methylation-based classification in diagnosis and prognosis. His work on the analysis of the myeloid gene panel was critical to our successful validation. Ryan is passionate about improving educational

resources and experiences and has been active in developing materials for both the Concepts in Pathology and Tissue Morphology block in the undergraduate medical school curriculum and for resident education. After graduation, Ryan will be heading to the University of Southern California for Neuropathology Fellowship. We will miss his infectious cheer and homemade baked goods!



Jordan Redemann, MD

Dr. Redemann earned his MD at University of Oklahoma and came to UNM where he completed his AP/ CP residency, during which he served as chief resident and received the 2022 Resident of the Year Award, followed by a Hematopathology fellowship. During his molecular fellowship, Jordan was instrumental in the validation of the new myeloid gene panel. He explored applications of nanopore sequencing and machine learning and artificial intelligence, while continuing his work on digital pathology implementation at

TriCore Reference Labs. In addition, he was very active in teaching at all levels of medical education, presenting in the Concepts in Pathology and Tissue Morphology block for first year medical students and leading numerous impromptu teaching sessions with rotating residents and fellows on the molecular service. For his efforts, he received an Exemplary Teaching Recognition from the Learning Environment Office iTeach program. We are thrilled that Jordan will be joining our Hematopathology and Molecular Pathology Division at UNM.

We congratulate our graduating fellows and would like to welcome our new 2024-25 Molecular Genetic Pathology Fellows:



Joseph Kaminsky, MD

Degree: MD from University of Tennessee

AP/CP Residency: University of Tennessee

Coming from Wesley Medical Center, Wichita, Kansas



Clay Kibler, MD

Degree: MD from University of Texas Medical Branch School of Medicine

AP/CP Residency: The University of New Mexico School of Medicine

Staying here in Albuquerque, NM

FELLOWSHIPS

SURGICAL PATHOLOGY

BY SHWETA AGARWAL, MD, ASSISTANT PROFESSOR, DIRECTOR SURGICAL PATHOLOGY FELLOWSHIP PROGRAM

Merry Spradling, DO



Dr. Merry Spradling received her DO degree from Doctorate of Osteopathy, Arizona College of Medicine followed by a residency training at Centura Health at Penrose-St Francis Pathology Residency Program, Colorado Springs, CO.

Merry joined UNM as a Cytopathology Fellow for the year 2022-23 following which she decided to stay on for the surgical pathology fellowship for the academic year 2023-24.

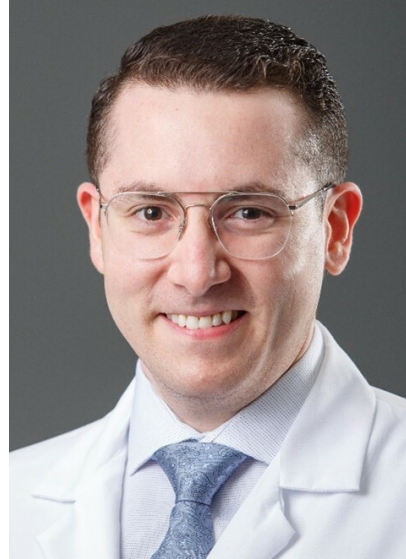
During her fellowship, Merry has become proficient in diagnosis of both cancer as well as non-cancer cases spanning a large variety of organ systems. She also participated in resident education by teaching them both at the scope as well as during "Unknown conferences."

Merry is staying at UNM Department of Pathology through July 2024, before moving to Boston, MA, for a position at the Jamaica Plain VA Medical Center. On behalf of all AP faculty, I wish Dr. Spradling all the best in her career.

FELLOWSHIPS

TRANSFUSION MEDICINE

BY JOSEPH GRIGGS, DO, ASSOCIATE PROFESSOR, DIRECTOR TRANSFUSION MEDICINE FELLOWSHIP PROGRAM



Andres Mindiola Romero, MD

Dr. Mindiola Romero earned his MD at the University of Zulia School of Medicine in Maracaibo, Venezuela, and completed his AP/CP training at Dartmouth Hitchcock Medical Center. He was a fellow member of multiple CAP committees, including the Transfusion, Apheresis, and Cellular Therapies committees. During his Transfusion Medicine fellowship, Andres gave multiple presentations during the bi-monthly coagulation conference, taught in the SOM, and was an invited panelist at the CAP Pathology Leadership Summit in April 2024. During his fellowship, he remained academically productive with multiple 1st author manuscripts in process and a handful of accepted abstracts and transfusion-related quality improvement projects completed. Andres will join UNM's Department of Pathology faculty in July, primarily focusing on Transfusion/Apheresis Medicine, Coagulation, and HLA.



RESIDENT GRADUATION

CHRISTOPHER CORMIER, DO

BY EMILY HELMRICH, DO, ASSISTANT PROFESSOR



In 2020, we were lucky enough to snag Dr. Cormier for our residency program from Rocky Vista University College of Osteopathic Medicine in Parker, CO. Dr. Cormier has accomplished so much during his time with us, serving as Chief resident from 2022-2023 with Dr. Hynes and participating in both the UNM Building Inclusive Leadership pilot program and the UNM Law School civil deposition program. He played an integral role in our residency recruitment, has led histology teaching sessions for his colleagues, and presented and published research in the fields of cytopathology and surgical pathology. Notably, Dr. Cormier obtained the much-deserved “Resident of the Year” award in 2023 and received two iCare Awards. These recognitions of excellence highlight what an extraordinary resident Dr. Cormier has been during his time with us.

Dr. Cormier is not only an extraordinary pathology resident, but an extraordinary human being as well. He has completed

many 20+ mile-long hikes in a single day, visited more than half of our national parks, and can out-ski any of us (and certainly any Texan or Californian tourist) at the lifts. He knows more about New Mexico than most people who were born here, and he can make a better margarita than even El Pinto can. His husband, Matt, is arguably one of the coolest people in the world, working for the national park service and rescuing people with helicopters and airplanes. Together they will conquer all of us, and we should be OK with that.

Fortunately, we were able to convince Dr. Cormier to stay at UNM for his fellowship training in forensic pathology, where afterwards he will join our OMI family as an assistant professor. I hope he experiences the weirdest and craziest cases and gets everything he is hoping for in his training. But the best part will be not having to say goodbye for good, because he will be here when it is all finished. Our current and future trainees, as well as myself and my colleagues, are so lucky to have such an enthusiastic, smart, and kind person to hang around with for years to come. Best of luck to you, Dr. Cormier. I will be in the back seat cheering you on every step of the way.



RESIDENT GRADUATION

MARIAH HUKINS, MD

BY: HEATHER JARRELL, MD, ASSOCIATE PROFESSOR & CHIEF MEDICAL INVESTIGATOR

Mariah Hukins hails from Chapel Hill, NC (correct pronunciation is “North Care-lina”), where she completed her undergraduate education at Duke and medical school at UNC. Mariah knew that she wanted to be a forensic pathologist when she rotated at the NC OCME during medical school, and she never looked back.

My very first case with Mariah was in September 2021, which was an extremely complicated consult autopsy of a 29-year-old man who was found deceased 8 months after a LVAD placement. Those familiar with the OMI know that the pathology residents are assigned the hospital and family consult cases, as part of their hospital autopsy rotation, which are difficult cases and often aren't the preferred cases. Many trainees with interest and focus in other areas of pathology, and even some attendings, would have begrudgingly questioned why we were performing an autopsy on an individual who was obviously in heart failure. However, Mariah was quite the opposite, having eagerly volunteered without having to be asked. She called and spoke to the mother, the significant other, and even spoke with the LVAD company regarding interrogation of the device, and then the autopsy showed what no one expected: the young man had broken several ribs posteriorly, sustained a massive hemothorax, and had died from injury instead of natural disease. The level of detail, care, and compassion that Mariah demonstrated for her very first case with me should be a reminder to us all when we get so busy that we lose sight of why we chose forensic pathology. Thank you, Mariah, for reminding me of this nearly three years ago.

On a lighter note, I've had the privilege of getting to know Mariah during her residency, including a 100% appreciation that we both, as Southern ladies, will be bringing a Bojangles restaurant to Albuquerque in the not-so-distant future. I'm excited that Mariah will be joining the OMI for forensics fellowship in July, where I hear rumors of Mario Kart race planning around the hallways with her co-fellows. After fellowship, we will be fortunate enough keep Mariah on at the OMI. Welcome home to the Office of the Medical Investigator. Congratulations, Dr. Hukins!!



RESIDENT GRADUATION

KELLY HYNES, DO

BY JULIE HARRINGTON, MD, ASSISTANT PROFESSOR



Before I ever met Kelly Hynes, all I knew about her was that she has this fabulous electric blue hair, as she stood out amongst the unfamiliar faces on the new 2020 pathology resident composite. That was the year I dyed my hair pink. Was she eccentric? I remember wondering. The creative type? Bold? Or like me, during the initial chaos of the evolving COVID-19 pandemic, was she simply a little stir crazy from being cooped up inside and desired to do something a little on the edge, just to distract from the insanity of it all? As is the case with all new incoming residents, I couldn't wait to get to meet our new class, but this resident in particular piqued my interest.

Originally from the Buckeye State, Kelly lived in Ohio all her life, obtaining her undergraduate degree, and completing two years in pharmacy school as she was convinced by her older brother, who is an Emergency Department pharmacist, to apply. As it turned out, being a pharmacist wasn't for Kelly so

she decided to apply to medical school. It was her OB-GYN preceptor that sparked her interest in forensics. She connected Kelly with a county coroner who was a retired surgeon. She went on her first scene with him and his wife, a retired nurse who scribed for him at scenes. This encounter involved a half mile hike into the woods with criminal investigators and the fire department to get to the actual scene. It was then and there that she found her calling. She was hooked! In 2019 during medical school, she ventured out of Ohio to see if our program was a good fit. Ryan Rebbe taught her how to gross her first gallbladder and appendix. She loved our program and ranked UNM #1. Kelly, we are so glad that you did!

It didn't take Kelly long to dive right into forensics. She did some moonlighting for the OMI and participated in expert witness mock depositions at the UNM School of Law. Most notably is that for the last three years she has worked with Drs. Decker and Lathrop on a urine drug screen study, in which she reviewed over 900 potential drug-related deaths. These cases, which met inclusion criteria, are being used to assess the accuracy of determining cause and manner of death using a triage system of urine drug screen and postmortem CT. As it currently stands, the National Association of Medical Examiners recommends that all suspected drug-related deaths undergo full autopsy, as opposed to external examination only. As the drug overdose epidemic continues to overwhelm our medicolegal death investigation systems worldwide, their goal is to maintain accurate determination of cause and manner of death while decreasing workload and conserving much needed resources.

Forensics wasn't Kelly's only interest. She was also deeply committed to medical student education, outreach, and recruitment. She was engaged in numerous activities including medical student

- continued on next page -

RESIDENT GRADUATION

- continued from previous page -

interactive sessions, the Student Pathology Association Resident Q&A Panel, and the Residents as Educators Conference. Forensics wasn't Kelly's only interest. She was also deeply committed to medical student education, outreach, and recruitment. She was engaged in numerous activities including medical student interactive sessions, the Student Pathology Association Resident Q&A Panel, and the Residents as Educators Conference. and thanks to her efforts, we have infused our program with many wonderful trainees! Finally, let us not forget her dedication and hard work as one of our amazing chief residents! We all know the challenges and difficulties she faced in that role, and we thank you Kelly for your service and commitment to our department.

Throughout residency Kelly cultivated close relationships with fellow residents and faculty, and I was delighted to come to learn that on a whim during her 2nd year of pathology residency Kelly and her significant other decided to get married on short notice, but unfortunately, they could not find an officiant for the ceremony. Their misfortune turned fortuitous when Chris Cormier graciously stepped up and got ordained to marry her and her husband, Gage, on top of Sandia Crest! I have also come to learn that despite her demure nature she is in fact quite adventurous. In her spare time Kelly loves to go white-water rafting. She also loves oil painting and her two cats, one of which she painted an amazing portrait of, and is currently hanging in the resident room!

On a final note, I feel deeply fortunate to have taken part in this amazing young doctor's training as I know she will be a wonderful forensic pathologist. I mean no disrespect to my forensic colleagues by saying I still secretly grieve inside about the amazing surgical pathologist she could have been, and I will always consider Kelly one of those residents that "got away."

RESIDENT GRADUATION

LANDON KUNZELMAN, MD

BY DAVID MARTIN, MD, ASSOCIATE PROFESSOR



Landon Kunzelman is one of my favorite residents of all time. Why, you may ask? This trainee had the wisdom to choose the best field in atomic pathology; GI pathology. GI path has it all: medical liver disease, a diverse array of tumors, tricky dysplasias, bugs, drugs, and gastric syphilis. I have been here for eight years, and as such, have interacted with close to 50 residents. I believe Landon is only the 2nd resident to commit to this fascinating field! Forensics... hemepath... perhaps more are on the horizon. I will say no more.

Despite the perceived lack of interest in making a career of GI pathology within our residency program, GI pathology remains a competitive fellowship across the nation, and Landon was able to lock one down at the prestigious Duke University. I could not be more proud.

I am also not surprised. Landon is a natural surgical pathologist. He imparts a curious, yet practical approach to

to every case. He knows when something is straight-forward, and also when something is off and needs further work up/investigation. He also has a keen eye. I always was quite comfortable when Landon was previewing my cases. My typing fingers were also grateful given how few words needed changing.

Other things to know about Landon:

1. This guy knows how to present a tumor board. Very clear and articulate presentations. This will serve him so well in the future.
2. He can speak Spanish. A completely useless skill in North Carolina. Perhaps he will come back in the future.
3. He is a master pianist. Very fancy.
4. He can grow vegetables. When the zombies come, this will be quite useful.
5. Landon is an excellent husband and father. Having children can be particularly trying during the residency years, and requires a lot of patience and understanding from loved ones. I would like to thank Landon's family for lending him to us for so many years.

I have no doubt Landon will become an excellent surgical/GI pathologist. We will be following your career closely and will miss you!

OUR NEW RESIDENTS

PLEASE JOIN US IN WELCOMING OUR INCOMING PGY-1 RESIDENTS!



Nicole Centazzo, MD

Dr. Centazzo graduated from medical school at St. George's University School of Medicine in Grenada. Prior to this, Nicole was an adjunct college professor at the John Jay College of Criminal Justice where she taught environmental science, and well as receiving her undergraduate degree in forensic science toxicology. Her research experience includes a summer internship at the National Institute on Drug Abuse. Nicole has been active in volunteer work, including ongoing work with Back On My Feet helping unhoused persons, as well as serving as the VP of Finance for the Women in Medicine group at St. George's. Originally from Italy, she enjoys exercising her culinary skills through Italian-Japanese fusion cuisine and making her famous apple pie.



Aurelio Falconi, MD

Dr. Falconi graduated from Wake Forest University School of Medicine (WFSOM) and received his undergraduate degree in neuroscience from Duke University. While at Wake Forest, Aurelio created a Healthcare Certificate Program on how best to care for LGBTQ+ patients and underrepresented populations in medicine. He served as vice-president of the WFSOM Latino Medical Student Association and was a class facilitator for first-year medical students. A talented musician, Aurelio's main instruments are trumpet and guitar, as well as composing and dancing. Aurelio was raised in Albuquerque and is looking forward to being close to family once again and serving the patients of New Mexico.



Madison Guevara, MD

Dr. Guevara graduated from the Medical College of Wisconsin (MCW) and completed her Internal Medicine residency at the Saint Joseph Hospital in Denver, CO. She received her undergraduate degree in neuroscience from Johns Hopkins University. While at MCW, she served as a mentor for medical students, where she also taught anatomy and mentored underrepresented high school students interested in careers in healthcare. Madison is excited to explore the intersection between her interest in internal medicine and pathology, especially her interest in autopsy/forensics.



Florencia Monge, MD, PhD

Dr. Monge will be joining us from the University of New Mexico School of Medicine. Florencia earned her PhD in biomedical engineering and her undergraduate degree in biology from UNM. During med school she was the founder and president for the Hispanic Women's Council Student Organization as well as volunteering at the One Hope Clinic supporting underrepresented immigrant communities. She also served as a teaching assistant to the UNM Phase I Clinical Morphology anatomy lab as well as a mentor in the Minorities in Medicine Program. Florencia brings her passion for teaching, mentoring, and addressing health care disparities to our program.



MEDICAL LABORATORY SCIENCES PROGRAM 2024 GRADUATION



Congratulations to the Spring 2024 Medical Laboratory Sciences (MLS) graduates! Pictured are our eight graduates participating in the Commencement. The MLS program was honored to have our own student, Safa Kassem, deliver an inspiring speech as the UNM Health Professions Programs Convocation Student Speaker. For more information and a video, visit the MLS student society Facebook page <https://www.facebook.com/UnmMLSSS/>



FACULTY NEWS

FACULTY PROMOTIONS - JULY 1, 2024

Daniel Babu, MD, from Assistant Professor to Associate Professor Clinician Educator

Elaine Bearer, MD, PhD, from Professor to Distinguished Professor

Devon Chabot-Richards, MD, from Associate Professor to Professor Clinician Educator

Rama Gullapalli, MD, PhD, from Assistant Professor to Associate Professor Clinician Educator

Joshua Hanson, MD, from Associate Professor to Professor Clinician Educator

Tara Ooms-Konecny, DVM, from Assistant Professor to Associate Professor Clinician Educator

Jay Raval, MD, from Associate Professor to Professor with Tenure

Emily Volpicelli, BS, from Lecturer II to Senior Lecturer II



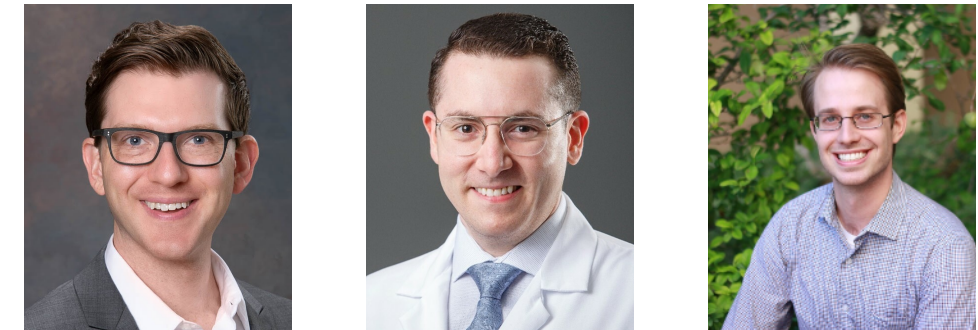
FACULTY NEWS

NEW FACULTY

Joseph Endicott, PhD, Assistant Professor, Research, September 1, 2024

Andres Mindiola Romero, MD, Assistant Professor Clinician Educator, Transfusion Medicine, July 15, 2024

Jordan Redemann, MD, Assistant Professor Clinician Educator, Clinical Pathology and Molecular Pathology, July 29, 2024



FACULTY RETIREMENTS

Kurt Nolte, MD, Distinguished Professor Emeritus, July 1, 2024

Angela Wandinger-Ness, PhD, Distinguished Professor Emerita, July 1, 2024



DEPARTMENT NEWS

CLINICAL EDUCATION AWARDS 2023-24

Aysha Mubeen, MD, received the Faculty Teaching Award this year. Voted on by Residents, this award recognizes a faculty member that demonstrates excellence in teaching and mentoring, who goes above and beyond to stimulate intellectual curiosity, excelling in patient care and professionalism in the residents they supervise, and serves as a source of inspiration as a person and physician.



Kelly Hynes, DO, received the Resident of the Year Award! Voted on by Faculty and Fellows, this award recognizes a resident that demonstrates excellence in provision of high quality patient care, depth of medical knowledge, demonstration of practice-based learning, communication skills, professionalism, and systems-based practice.

Chris Cormier, DO, received the Resident Educator Award. Voted on by Residents, this award recognizes a resident who demonstrates excellence in teaching their peers and other learners, who goes above and beyond to support the educational mission of the program, and who is a wise mentor for colleagues and junior residents.



Troy Tenney, MD, Cytopathology Fellow, received the Fellow Educator Award. Voted on by Residents, this award recognizes a fellow who demonstrates excellence in teaching the residents, who goes above and beyond in spending time with all learners, excels in patient care and professionalism, and serves as a mentor and role model to residents.

RESEARCH AND SCHOLARLY WORK

FISCAL YEAR 2024 GRANTS

Total Proposals: 44

Total Awards: 52

Total Funding Received: \$12,533,323

CALENDAR YEAR 2023

Total Publications: 103

DEPARTMENT NEWS

THE ANNUAL GEORGE D. MONTOYA SCHOLARSHIP AWARD PATHOLOGY RESEARCH DAY 2024



Our 2024 Montoya scholarship award recipients, William Burris and Bianca Myers, with the Montoya family.

Thank you to the supporters of our Department of Pathology's Research Day on Thursday, May 9th, 2024. We had 20 posters exhibited as well as lightning talks presented by: Effie Berry, MD (Resident), Eric Burns (Lidke Lab), Rahul Kumar (Gullapalli Lab), Dhruv Grandhe (Gullapalli Lab), Lein Tang (mentored by Dr. Gilllette and Dr. Raval), and Jay Raval, MD.

We also thank the Montoya family for their continued support of the department's research initiatives through scholarship opportunities to graduates and undergraduates pursuing careers in biomedical research.

This year's George D. Montoya scholarships were awarded to **William Burris**, an undergraduate student in Dr. Aaron Neumann's lab, and **Bianca Myers**, a graduate student in Dr. Tou Yia Vue's lab. William is working on a project under Dr. Neumann in the Department of Pathology analyzing the effects of heavy metals stress on *Candida albicans* antimicrobial resistance. Bianca is a 5th year PhD candidate in the Department of Neurosciences. She is conducting research that focuses on glioblastomas (GBM) which make up the majority of primary brain tumors and, despite over 50 years of research, median survival for GBM patients remains dismal at 18 months.

Congratulations William Burris and Bianca Myers, and to all our presenters and lightning speakers!

MAKE A GIFT

Your gift today impacts health care and research for tomorrow. Please consider making a recurring, one time, or legacy donation to one or more of the following funds:

THE PATHOLOGY EDUCATION FUND

Advance the education and research missions of the department.

VISIT: [The Pathology Education Fund](#)

THE CHEN HEMATOPATHOLOGY LECTURE SERIES

Support the Department of Pathology annual Hematopathology Lectureship and the education and training of future pathologists.

VISIT: [The Chen Hematopathology Lecture Series](#)

THE FOUCAR ENDOWMENT

Invest in future Pathologists. Recruiting and training highly proficient Pathology residents and fellows is a top priority.

VISIT: [The Foucar Endowment](#)

THE GEORGE D. MONTOYA RESEARCH SCHOLARSHIP FUND

Encourage UNM students to pursue a career in biomedical research.

VISIT: [The George D. Montoya Research Scholarship Fund](#)

THE HARVEY FAMILY ENDOWED CHAIR AND PROFESSORSHIP

Invest in Pathology research faculty. Endowed professorships attract and retain expert faculty who teach passionately and lead innovative translational research.

VISIT: [The Harvey Endowed Chair and Professorship](#)

OMI FORENSIC PATHOLOGY FELLOWSHIP PROFESSIONAL DEVELOPMENT

Enhance the education and professional development of OMI Forensic Pathology Fellows.

VISIT: [OMI Forensic Pathology Fellowship Professional Development Fund](#)

THE THOMAS M. WILLIAMS & MARGARET G. WILLIAMS ENDOWMENT FOR EDUCATION AND TRAINING

Support the greatest educational and training needs within the Department of Pathology.

VISIT: [The Dr. Thomas M. Williams & Margaret G. Williams Endowment for Education and Training](#)

If you need assistance with your gift please contact:

Maggie Schold, MFA, Director of Development, UNM School of Medicine

Mobile: (505) 259-9164 or Email: maggie.schold@unmfund.org

Donate by check, estate planning, bequest, charitable annuity, insurance gift, charitable trust and more. Thank you for thinking of the Department of Pathology's funds as you generously give!

Acknowledgements

The Department of Pathology at The University of New Mexico School of Medicine gratefully acknowledges Nancy Risenhoover for the layout of this newsletter.

For more information on our department, please visit our website:

hsc.unm.edu/medicine/departments/pathology/

Do you have news? Please share!

Contact: HSC_PathAdmin@salud.unm.edu

SUMMER 2024



**SCHOOL OF
MEDICINE**
PATHOLOGY