

CNS is an academic and clinical program of the University of New Mexico Hospitals and University of New Mexico Health Sciences Center, the only Level One Trauma Facility and



medical school in New Mexico. Training opportunities are broad and include cross-cultural and multilingual (primarily Spanish speaking people of Hispanic/Latino origin as well as Native Americans) inpatient and outpatient neuropsychological evaluations and/or consultations for children, youth and adults with a wide range of conditions including:

- Dementias
- Epilepsy
- Stroke
- Parkinson's Disease & movement disorders
- Traumatic Brain Injury
- Multiple sclerosis
- Intellectual Disability
- Cerebral Palsy
- Cancer
- Genetic Disorders
- Prematurity
- Neurodevelopmental Learning Disorders
- Attention Deficit Hyperactivity Disorder
- Psychiatric Disorders
- Pre- and postoperative neuropsychological evaluations/Wada testing/fMRI for epilepsy & tumor resections
- Presurgical evaluations for deep brain stimulation in Parkinson's disease



The University of New Mexico Health Sciences Center is in Albuquerque, New Mexico. Albuquerque, a fast growing city (pop. > 550,000) nestled between the towering Sandia Mountains and the Rio Grande Valley, is rich with culture, history, and breathtaking landscapes. Albuquerque's temperate climate, large number of sunny days, proximity to both mountains and rivers and central location provides unparalleled outdoor recreation, including skiing, hot air ballooning, hiking/mountain climbing, fishing, and biking. Albuquerque is a wonderful place to live, work and raise a family.

Center for Neuropsychological Services

MSC 09 5030

1 University of New Mexico,
Albuquerque, NM 87131-0001

Tel: 505-272-8833

Fax: 505-272-8316

<http://hsc.unm.edu/health/patient-care/neuropsychology/index.html>



UNM
HOSPITALS



Center for Neuropsychological Services (CNS)

Clinical Training Opportunities:

- Psychology Graduate Student Neuropsychology Practica
- Pediatric Clinical Psychology Predoctoral Internship (Pediatric Neuropsychology Emphasis)
- Pediatric Neuropsychology Postdoctoral Fellowship
- Adult Neuropsychology Postdoctoral Fellowship

Psychology Graduate Students: Adult and Pediatric Neuropsychology Practica

CNS offers supervised adult and child/adolescent neuropsychology practicum and shadowing experiences for advanced psychology graduate students. Students develop clinical skills in neuropsychological assessment, including clinical interviewing, test administration, scoring and interpretation, writing test reports, and providing feedback to patients

Predoctoral Internship: Pediatric Neuropsychology Track

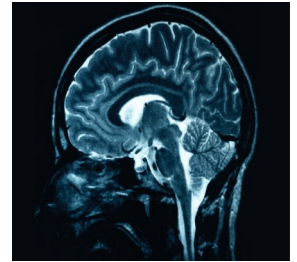
CNS offers a one-year, APA-accredited predoctoral internship in clinical psychology with an emphasis on Pediatric Neuropsychology, to provide training in the general practice of professional psychology with emphasis on the neuropsychological assessment of children and adolescents with a wide range of central nervous system disorders along with possible opportunities for consultation with medical, psychiatric, and school personnel. The Pediatric Neuropsychology Track is based on APA Div. 40 and Houston Conference guidelines on specialty training in Clinical Neuropsychology. This track involves 50% clinical time devoted to neuropsychological assessment, with opportunities to rotate through various specialty clinics (e.g., epilepsy, oncology), and 50% intervention/therapy/consultation. Didactics are included as well. More information is available at: <https://psychiatry.unm.edu/education/clinicalpsych/index.html>.

Postdoctoral Fellowship in Pediatric and Adult Clinical Neuropsychology

CNS offers two-year postdoctoral fellowships in pediatric and adult clinical neuropsychology. Our training program is a member of APPCN and is modeled on training guidelines set forth by the Houston Conference and APA Division 40 guidelines on specialty training in Clinical Neuropsychology. Our goal is to train neuropsychology fellows to an advanced level of competence in neuropsychology in order to achieve board certification in neuropsychology. Fellows will receive specialty clinical training in assessment of adults and children/adolescents with a wide range of medical, neurological, and psychiatric conditions. Didactic attendance is expected, and fellows can choose from many options (e.g., VA Neuropsychology, Psychiatry, Pediatric and Adult Neurology Grand Rounds, CNS Case Conference, Epilepsy Surgery Conference). All fellows are expected to participate in research and complete their own independent project over the two years; dedicated research time is included in the fellows' workload. CNS faculty research collaborations have included projects in TBI, epilepsy, clinical outcomes, FAS, ADHD, dyslexia, and alcohol abuse. CNS researchers often collaborate with the Mind Research Network (MRN), a world-class neuroimaging facility.

- **Pediatric Fellows:** The pediatric postdoctoral fellowship focuses primarily on outpatient pediatric neuropsychological assessment of children and adolescents with a range of medical, neurological, neurodevelopmental, and psychiatric concerns. Clinical experiences will include multidisciplinary pediatric assessment and/or consults (e.g., inpatient acute rehab evaluations,

consultation in Pediatric Oncology Survivorship Clinic, prenatal drug exposure evaluations). Additional clinical opportunities to round out training (e.g., training in fMRI, adult neuropsychology) are available in our flexible training program.



- **Adult Fellows:** The adult fellowship focuses primarily on outpatient assessment of individuals with various neurologic, medical, and psychiatric conditions. Additional clinical experiences include pre- and post-operative neuropsychological evaluations, Wada testing, fMRI for epilepsy and CNS tumor surgery candidates, intraoperative functional mapping during tumor resection surgery, and pre-surgical evaluations for patients with Parkinson's Disease and essential tremor undergoing deep brain stimulator placement. Fellows will also have the opportunity for minor rotations in various specialty clinics (e.g., inpatient cerebrovascular, clinical fMRI, Albuquerque VA Hospital). Opportunities to round out training (e.g., pediatric assessment) are available as well.

Additional information can be found at: [WEB-SITE](#)

Interested applicants may contact S. Laura Lundy, Ph.D., ABPP-CN, Director of Training (505-272-8833 or slundy@salud.unm.edu).