

Cancer in New Mexico 2025



HEALTH SCIENCES
NEW MEXICO TUMOR REGISTRY

Please contact us!

Phone: 505-272-5541

E-Mail: nmtr-info@salud.unm.edu

URL: hsc.unm.edu/new-mexico-tumor-registry/

TABLE OF CONTENTS

Introduction.....	1
New Cases of Cancer	
Estimated Number of New Cancer Cases	
Description and Methods	2
Common Cancer Types for Males and Females.....	3
All Cancers Combined (Map of New Mexico)	4
Common Cancer Types by County	5
Cancer Incidence Rates	
Description and Methods	6
All Cancers Combined	7
Common Cancer Types for Males	8
Common Cancer Types for Females	9
Cancer Related-Deaths	
Cancer Mortality Rates	
Description and Methods	10
All Cancers Combined	11
Common Cancer Types for Males	12
Common Cancer Types for Females	13

Cancer is a leading cause of illness and death in New Mexico. In 2025, an estimated 10,250 new cases of malignant cancer will be diagnosed among New Mexico residents. This report provides information about the burden of cancer in New Mexico for policy makers, public health professionals, health care providers, researchers and others who need timely and accurate information to support a broad spectrum of cancer control activities.

THE NEW MEXICO TUMOR REGISTRY

Cancer is a reportable disease in New Mexico. The New Mexico Department of Health has identified the New Mexico Tumor Registry as its designee for conducting routine public health surveillance for cancer in the state. The New Mexico Tumor Registry is a population-based cancer registry that has served New Mexico since 1966. The Registry collaborates with health care providers and other professionals throughout the state to identify incident cancer cases through routine and systematic review of existing records such as pathology reports, medical records, radiation therapy records, hospital discharge lists, and vital records. For each new cancer case, the Registry documents selected information about each patient (e.g., age at diagnosis, sex, race/ethnicity, and place of residence), tumor characteristics (e.g., primary anatomical site, histological type, and stage of disease at diagnosis), and first course of cancer-directed therapy (e.g., surgery, chemotherapy, radiation therapy, and hormone therapy).

The New Mexico Tumor Registry is a founding member of the National Cancer Institute's Surveillance, Epidemiology and End Results (SEER) Program – a consortium of cancer registries that provide high quality cancer surveillance data for the United States. Cancer surveillance in New Mexico is conducted in accordance with prevailing standards established by the National Cancer Institute, the North American Association of Central Cancer Registries, and the American College of Surgeons.

CONTENTS

The first section of this report presents estimates of the number of new cancer cases that are expected to occur among New Mexico residents during calendar year 2025. Incidence and mortality rates are useful measures for comparing the occurrence of cancer among racial/ethnic groups while accounting for differences in the size and age-structure of each population. Therefore, the second section focuses on average annual, age-adjusted incidence and mortality rates by type of cancer, based on the most recent five-year period for which actual cancer case counts and deaths are currently available.

DATA SOURCES

Information presented in this report was compiled with records from the New Mexico Tumor Registry, the SEER Program, and National Center for Health Statistics. Denominators for incidence and mortality rate calculations were derived from U.S. Census Bureau figures.

Information regarding deaths due to cancer among New Mexico residents was obtained from the National Center for Health Statistics at the Centers for Disease Control and Prevention. Death certificates issued by individual states, including New Mexico, are routinely submitted to the National Center for Health Statistics for the purpose of monitoring trends in mortality rates for the United States.

NEW CASES OF CANCER

Estimated Number of New Cases – Description and Methods

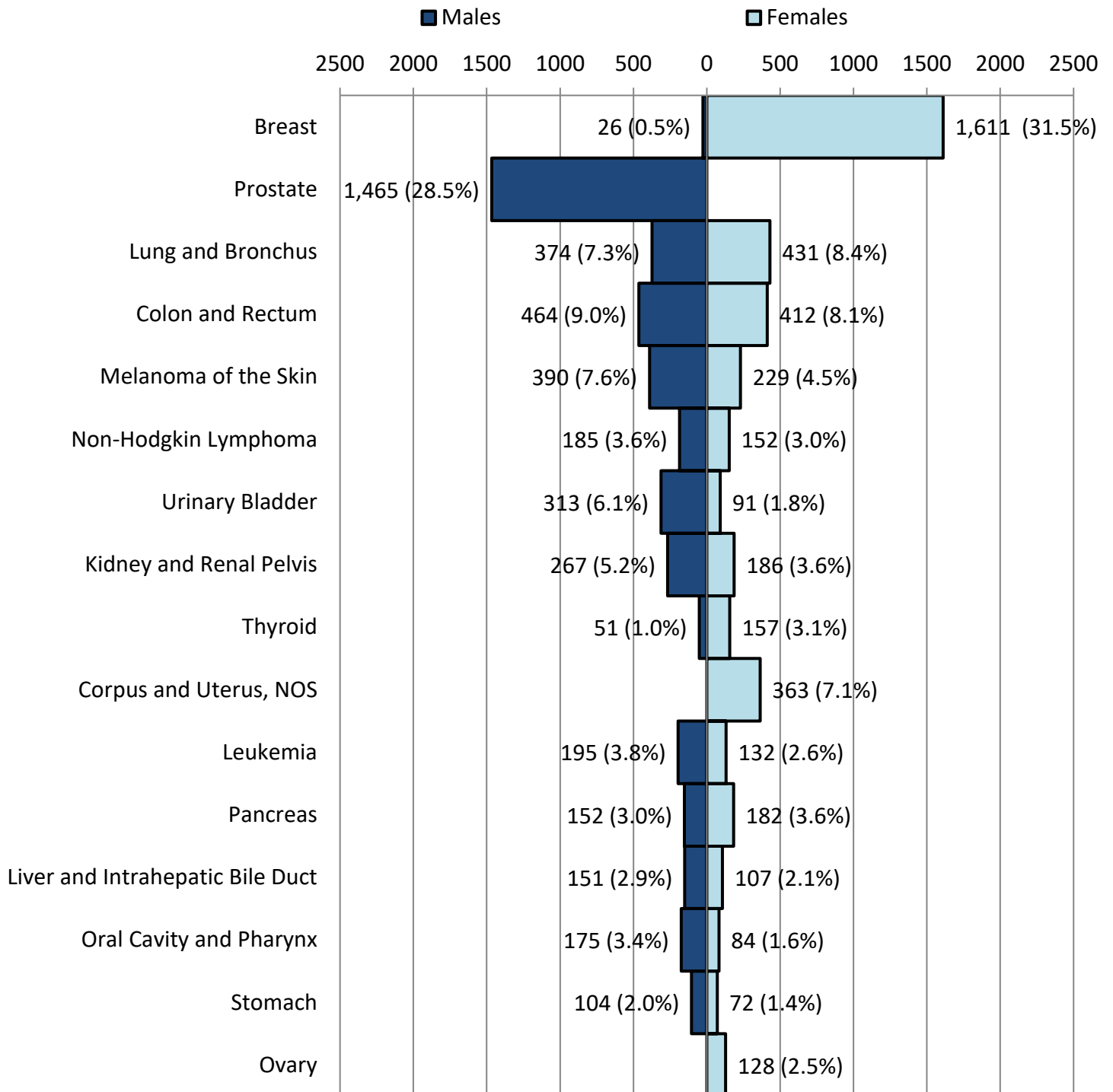
Approximately 10,250 new cancer cases are expected to occur among New Mexico residents during calendar year 2025. These estimates were based on recent years of complete data from the New Mexico Tumor Registry. Specifically, simple linear regression techniques were applied to the annual case counts for calendar years 2018-2022 to estimate the number of cases that would be expected to be observed among New Mexico residents during calendar year 2025.

Estimated case counts for several common types of cancer – statewide – are shown in the graph on page 3. Estimated case counts for all malignant cancers (all cancers combined) are shown by county in the map on page 4. Estimated case counts for several common types of cancer by county are shown in the table on page 5.

Estimated Number of New Cancer Cases – 2025

New Mexico Residents

Common Cancer Types

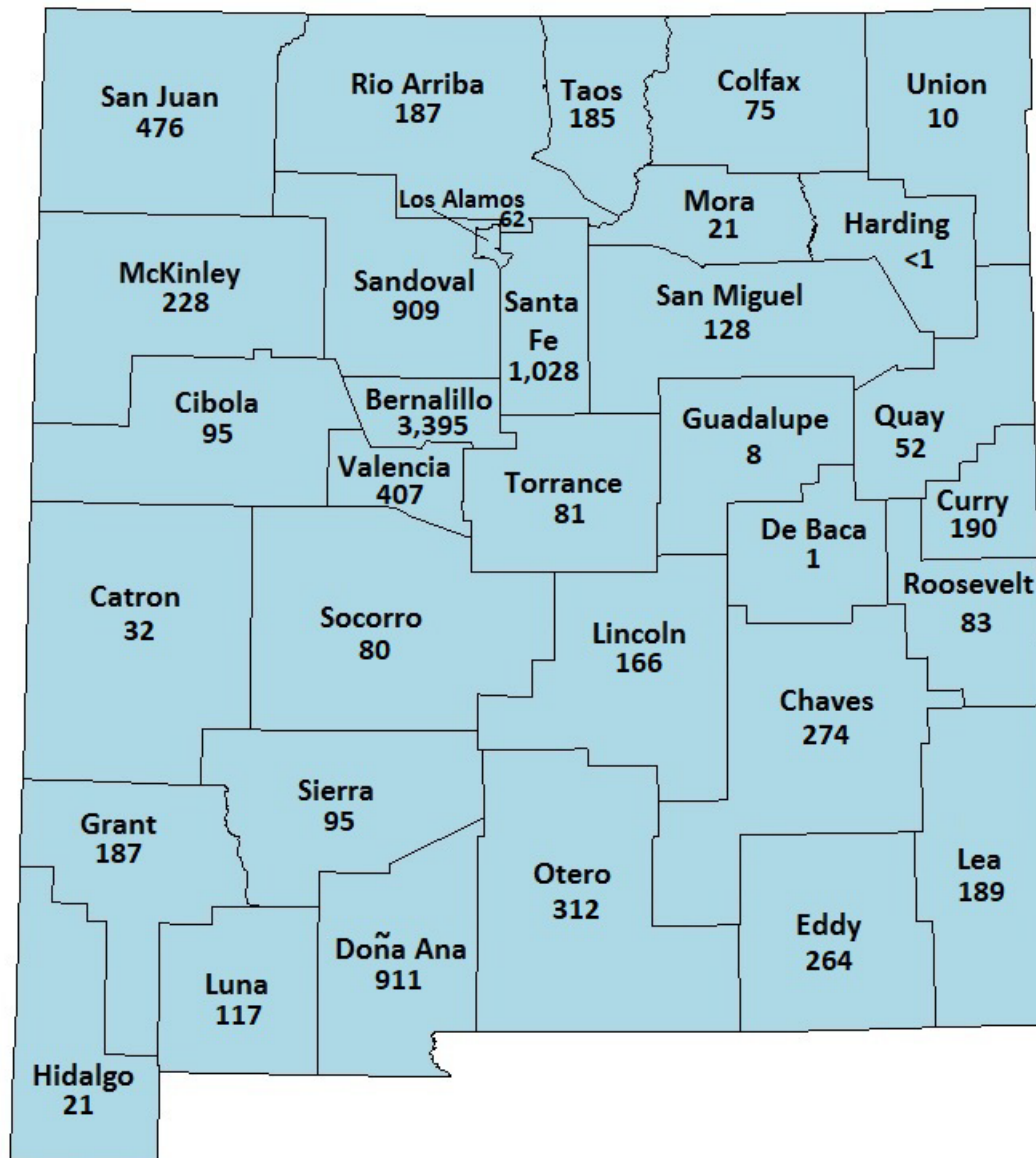


NEW CASES OF CANCER

Estimated Number of New Cancer Cases – 2025

New Mexico Residents

All Cancers Combined



Estimated Number of New Cancer Cases – 2025
New Mexico Residents by County
Common Cancer Types

County	All Cancers Combined	Female Breast	Prostate	Lung and Bronchus	Colon and Rectum	Melanoma of the Skin	Non-Hodgkin Lymphoma	Corpus Uterus	Urinary Bladder	Thyroid
<i>NM, Statewide</i>	10,250	1,611	1,465	805	876	619	338	363	404	207
Bernalillo	3,395	623	528	250	253	200	120	111	107	58
Catron	32	8	13	2	1	<1	1	<1	3	<1
Chaves	274	40	26	30	16	27	9	9	13	5
Cibola	95	<1	10	13	10	1	<1	7	3	6
Colfax	75	14	5	9	10	6	5	<1	5	4
Curry	190	8	25	13	16	23	4	8	9	3
De Baca	1	<1	<1	<1	<1	<1	<1	<1	<1	<1
Doña Ana	911	111	75	81	71	52	34	47	38	42
Eddy	264	28	6	31	45	18	8	8	3	9
Grant	187	39	23	14	17	10	<1	4	11	3
Guadalupe	8	3	4	<1	<1	1	<1	<1	<1	<1
Harding	<1	<1	<1	1	<1	1	1	<1	<1	<1
Hidalgo	21	7	1	<1	3	2	3	4	2	<1
Lea	189	27	25	12	10	31	2	<1	5	<1
Lincoln	166	28	25	10	11	3	15	2	6	2
Los Alamos	62	6	2	3	6	16	3	1	2	2
Luna	117	4	7	14	9	1	10	4	4	4
McKinley	228	25	29	11	33	4	11	13	6	<1
Mora	21	<1	8	5	1	<1	<1	<1	1	<1
Otero	312	49	31	27	21	16	9	12	19	7
Quay	52	8	6	6	9	2	<1	3	2	<1
Rio Arriba	187	24	29	11	21	5	5	10	8	7
Roosevelt	83	17	7	9	10	7	7	<1	3	1
Sandoval	909	171	151	69	66	62	26	19	37	30
San Juan	476	64	83	39	63	23	18	13	31	1
San Miguel	128	11	29	11	14	4	7	4	4	2
Santa Fe	1,028	171	199	78	72	68	23	55	31	25
Sierra	95	17	7	5	9	7	<1	2	10	5
Socorro	80	12	19	<1	10	1	3	5	5	2
Taos	185	33	29	11	20	11	13	<1	6	5
Torrance	81	14	13	1	9	4	<1	5	3	<1
Union	10	1	2	4	<1	<1	<1	<1	2	2
Valencia	407	56	58	35	47	18	14	23	27	<1

NEW CASES OF CANCER

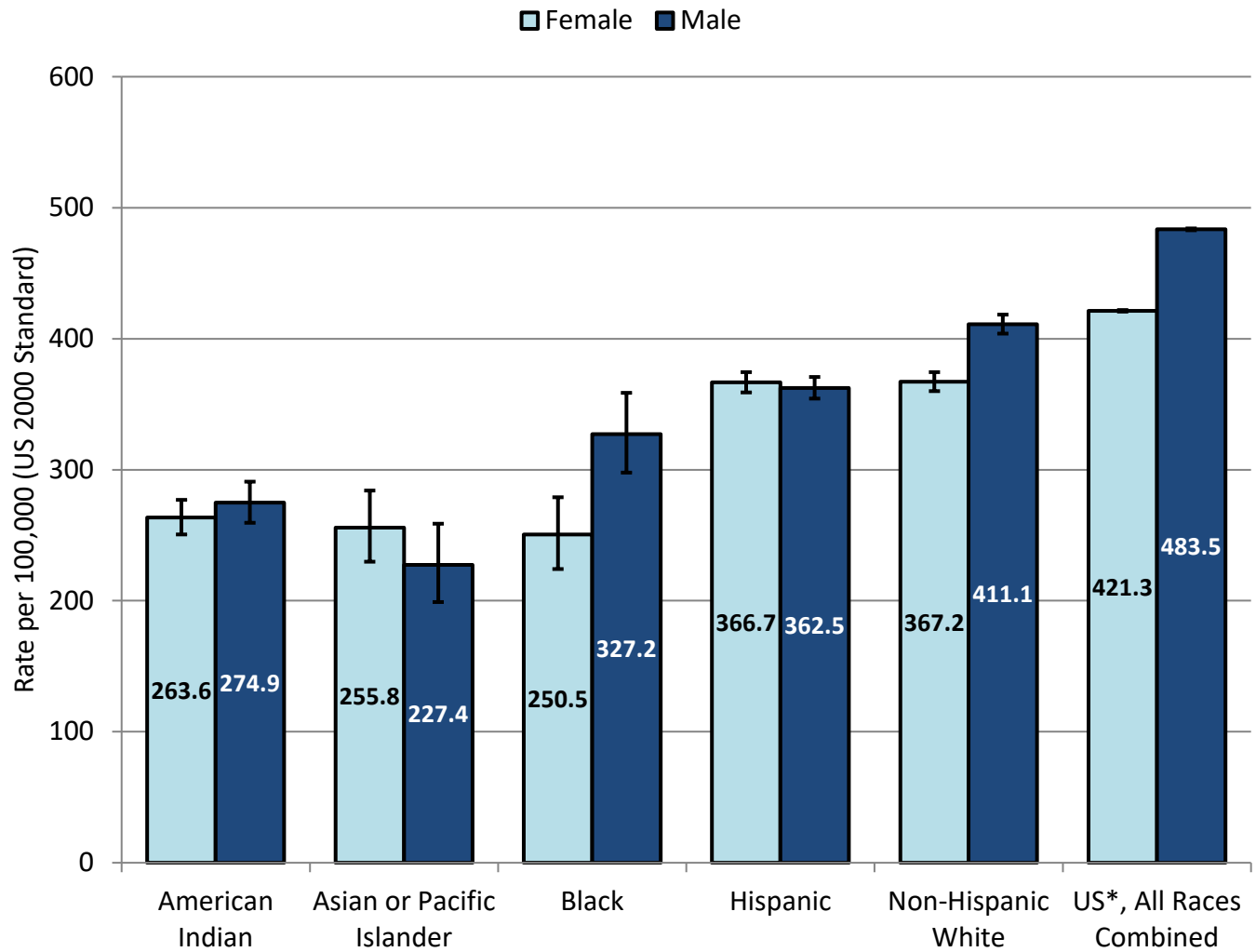
Cancer Incidence Rates – Description and Methods

The *incidence rate* is a useful tool for comparing and contrasting the occurrence of cancer among racial/ethnic groups and geographic areas. In the present context, incidence rates measure the “speed” or “velocity” at which members of the target population – New Mexico residents – are diagnosed with cancer during the specified time period.

Cancer can occur at any age, but a majority of cancer cases are diagnosed among older adults. For this reason, comparing cancer rates between two or more populations can be misleading if the underlying age distributions vary among the comparison populations. All incidence rates presented in this report were “age-adjusted” by a common statistical procedure to account for such differences. Specifically, average annual age-adjusted incidence rates were calculated by the direct method and were standardized to the age-distribution of the projected U.S. population for calendar year 2025. Incidence rates were calculated with the National Cancer Institute’s SEER*Stat software system.

Statewide cancer incidence rates for all cancers combined by race/ethnic group and sex are shown in the graph on page 7. Incidence rates for several common types of cancer are shown by race/ethnic group in the tables on page 8 (males) and 9 (females).

All Cancers Combined
Average Annual Age-Adjusted Incidence Rates
New Mexico Residents, 2018-2022



* Data are from 21 SEER Program Registries

NEW CASES OF CANCER

Average Annual Age-Adjusted Incidence Rates* Common Cancer Types – Females New Mexico Residents, 2018-2022

Primary Cancer Type	New Mexico					United States **
	American Indian	Asian or Pacific Islander	Black	Hispanic	Non-Hispanic White	All Races Combined
<i>All Cancers Combined</i>	263.6 (6.7)	255.8 (13.6)	250.5 (13.8)	366.7 (4.0)	367.2 (3.7)	421.3 (0.3)
Breast	59.5 (3.2)	86.0 (7.7)	88.6 (8.3)	116.2 (2.2)	121.9 (2.1)	130.8 (0.2)
Lung and Bronchus	10.9 (1.4)	21.6 (4.0)	33.1 (5.0)	26.9 (1.1)	34.1 (0.9)	43.9 (0.1)
Colon and Rectum	28.3 (2.2)	19.1 (3.7)	26.3 (4.4)	31.2 (1.2)	26.0 (1.0)	32.6 (0.1)
Corpus and Uterus	28.6 (2.2)	16.6 (3.3)	21.3 (3.9)	27.4 (1.1)	20.9 (0.8)	28.3 (0.1)
Thyroid	11.3 (1.4)	21.7 (4.0)	11.6 (3.1)	24.9 (1.1)	16.5 (1.0)	19.7 (0.1)
Melanoma of the Skin	3.3 (0.8)	1.1 (0.8)	-	4.7 (0.4)	22.9 (1.0)	17.5 (0.1)
Kidney and Renal Pelvis	17.5 (1.7)	6.4 (2.0)	5.4 (2.1)	15.1 (0.8)	8.4 (0.6)	12.0 (0.1)
Non-Hodgkin Lymphoma	10.1 (1.3)	6.6 (2.3)	9.4 (2.5)	12.0 (0.7)	11.7 (0.6)	15.7 (0.1)
Pancreas	7.7 (1.2)	6.1 (2.1)	5.6 (2.1)	11.5 (0.7)	11.1 (0.6)	12.3 (0.1)
Ovary	10.2 (1.3)	8.2 (2.4)	3.0 (1.6)	9.5 (0.6)	8.7 (0.6)	10.3 (0.0)
Leukemia	5.5 (0.9)	2.8 (1.5)	5.9 (2.1)	7.7 (0.6)	10.1 (0.6)	11.3 (0.1)
Cervix Uteri	6.1 (1.0)	7.2 (2.4)	4.3 (1.8)	9.7 (0.7)	7.2 (0.6)	7.7 (0.0)
Urinary Bladder	1.9 (0.6)	5.7 (2.1)	2.9 (1.5)	5.2 (0.5)	6.9 (0.4)	7.7 (0.0)
Liver and Intrahepatic Bile Duct	9.9 (1.3)	5.4 (2.1)	2.6 (1.4)	8.2 (0.6)	3.5 (0.3)	5.5 (0.0)
Stomach	9.8 (1.3)	3.2 (1.5)	1.5 (1.1)	7.7 (0.6)	3.2 (0.3)	5.7 (0.0)
Oral Cavity and Pharynx	2.3 (0.6)	5.2 (2.0)	5.9 (2.2)	4.1 (0.4)	6.2 (0.5)	6.6 (0.0)
Myeloma	5.2 (0.9)	3.0 (1.6)	4.5 (1.9)	4.8 (0.4)	4.0 (0.3)	6.1 (0.0)
Brain and Other Nervous System	3.2 (0.7)	2.6 (1.5)	1.2 (0.9)	4.8 (0.4)	4.4 (0.5)	5.2 (0.0)
Gallbladder and Other Biliary	5.7 (1.0)	1.8 (1.1)	0.6 (0.6)	3.1 (0.4)	2.2 (0.3)	3.0 (0.0)
Other Female Genital Organs	4.5 (0.9)	2.3 (1.4)	0.6 (0.6)	2.6 (0.3)	2.2 (0.3)	2.2 (0.0)

* Rates are per 100,000 and age-adjusted to the 2000 U.S. Standard Population; Standard errors are presented in parentheses

** Data are from 21 SEER Program Registries

- Statistic could not be calculated due to small number of cases

Average Annual Age-Adjusted Incidence Rates*
Common Cancer Types – Males
New Mexico Residents, 2018-2022

Primary Cancer Type	New Mexico					United States **
	American Indian	Asian or Pacific Islander	Black	Hispanic	Non-Hispanic White	All Races Combined
<i>All Cancers Combined</i>	274.9 (8.0)	227.4 (15.0)	327.2 (15.3)	362.5 (4.2)	411.1 (3.7)	483.5 (0.4)
Prostate	50.6 (3.4)	45.0 (6.7)	112.1 (8.7)	80.2 (1.9)	94.0 (1.6)	120.2 (0.2)
Colon and Rectum	42.5 (3.1)	17.3 (4.2)	28.8 (4.3)	41.2 (1.4)	35.4 (1.2)	42.3 (0.1)
Lung and Bronchus	12.1 (1.8)	32.3 (5.8)	26.3 (4.5)	32.8 (1.3)	38.0 (1.0)	53.1 (0.1)
Kidney and Renal Pelvis	36.3 (2.8)	9.7 (3.1)	23.5 (4.1)	26.7 (1.1)	16.8 (0.8)	23.8 (0.1)
Melanoma of the Skin	6.1 (1.4)	-	0.7 (0.7)	5.1 (0.5)	37.7 (1.2)	27.8 (0.1)
Urinary Bladder	4.9 (1.1)	8.3 (2.8)	16.1 (3.4)	15.7 (0.9)	28.0 (0.9)	31.2 (0.1)
Non-Hodgkin Lymphoma	15.0 (2.0)	19.9 (4.4)	14.0 (3.7)	15.3 (0.9)	17.4 (0.8)	22.4 (0.1)
Leukemia	7.2 (1.3)	5.7 (2.4)	13.7 (3.3)	13.7 (0.8)	18.3 (0.9)	18.2 (0.1)
Oral Cavity and Pharynx	6.7 (1.2)	14.5 (3.4)	5.2 (1.7)	11.3 (0.7)	17.8 (0.8)	17.4 (0.1)
Liver and Intrahepatic Bile Duct	14.5 (1.7)	10.6 (3.0)	16.1 (3.2)	22.9 (1.0)	8.6 (0.5)	13.9 (0.1)
Pancreas	9.3 (1.5)	8.9 (3.1)	9.6 (2.6)	15.0 (0.8)	12.5 (0.6)	15.5 (0.1)
Thyroid	4.1 (0.9)	6.6 (2.5)	3.2 (1.3)	7.3 (0.6)	8.6 (0.7)	7.3 (0.0)
Stomach	14.5 (1.8)	11.1 (3.3)	6.4 (2.0)	9.2 (0.7)	5.3 (0.4)	9.2 (0.0)
Testis	6.4 (1.0)	2.6 (1.5)	-	7.4 (0.6)	7.3 (0.7)	6.0 (0.0)
Myeloma	7.0 (1.2)	3.2 (1.6)	10.7 (2.9)	6.8 (0.6)	6.2 (0.4)	8.8 (0.0)
Esophagus	4.7 (1.1)	3.1 (1.6)	1.9 (1.1)	5.4 (0.5)	8.0 (0.5)	7.1 (0.0)
Brain and Other Nervous System	3.8 (0.8)	1.7 (1.2)	2.5 (1.1)	5.7 (0.5)	7.7 (0.6)	7.2 (0.0)
Larynx	2.0 (0.7)	-	4.3 (1.7)	3.9 (0.4)	3.9 (0.4)	4.4 (0.0)
Soft Tissue including Heart	2.6 (0.8)	0.8 (0.8)	0.5 (0.5)	3.8 (0.4)	3.1 (0.4)	4.1 (0.0)
Gallbladder and Other Biliary	4.9 (1.1)	2.4 (1.7)	3.5 (1.6)	4.1 (0.5)	2.0 (0.3)	3.1 (0.0)

* Rates are per 100,000 and age-adjusted to the 2000 U.S. Standard Population; Standard errors are presented in parentheses

** Data are from 21 SEER Program Registries

- Statistic could not be calculated due to small number of cases

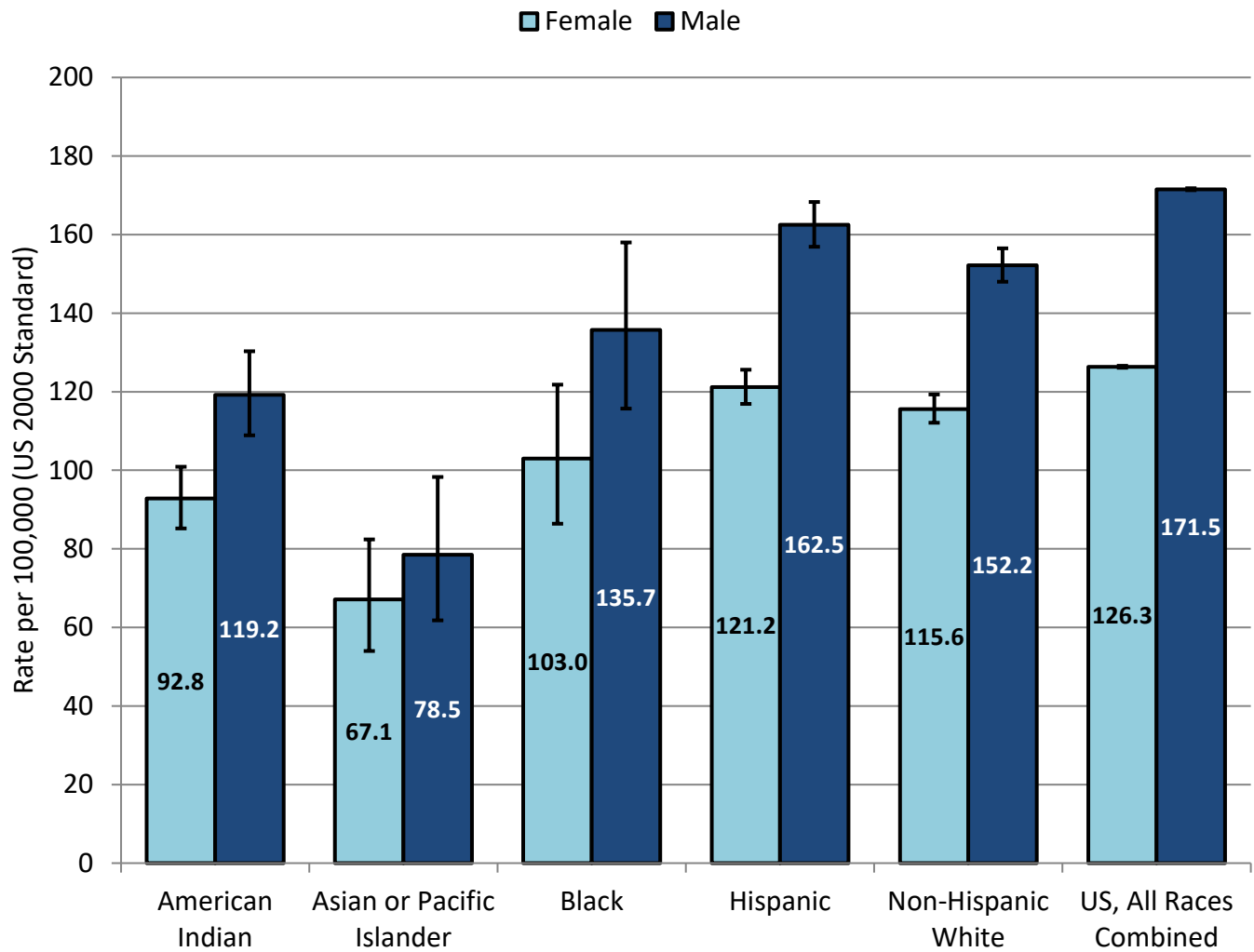
Cancer Mortality Rates – Description and Methods

Mortality rates are analogous to the incidence rates that were described in the previous section of this report. In contrast to incidence rates, however, deaths due to a specific cancer serve as the numerator in mortality rates. Thus, mortality rates measure the “speed” or “velocity” at which members of the target population – New Mexico residents – died from cancer during the specified time period.

As with incidence rates, average annual age-adjusted mortality rates were calculated by the direct method and were standardized to the age-distribution of the projected US population for calendar year 2025. The mortality rates were calculated for the time period 2019-2023 since these are the most recent years of data currently available from the National Center for Health Statistics. Mortality rates were also calculated with the National Cancer Institute’s SEER*Stat software system.

Statewide cancer mortality rates for all cancers combined by race/ethnic group and sex are shown in the graph on page 11. Mortality rates for several common types of cancer are shown by race/ethnic group in the tables on page 12 (males) and 13 (females).

All Cancers Combined
Average Annual Age-Adjusted Mortality Rates
New Mexico Residents, 2019-2023



CANCER-RELATED DEATHS

Average Annual Age-Adjusted Mortality Rates* Common Cancer Types – Females New Mexico Residents, 2019-2023

Primary Cancer Type	New Mexico					United States **
	American Indian	Asian or Pacific Islander	Black	Hispanic	Non-Hispanic White	All Races Combined
<i>All Cancers Combined</i>	<i>92.8 (4.0)</i>	<i>67.1 (7.0)</i>	<i>103.0 (8.9)</i>	<i>121.2 (2.2)</i>	<i>115.6 (1.8)</i>	<i>126.3 (0.1)</i>
Breast	10.5 (1.3)	13.1 (3.1)	24.1 (4.4)	18.9 (0.9)	20.8 (0.8)	19.2 (0.0)
Lung and Bronchus	5.5 (1.0)	10.4 (2.7)	12.8 (3.1)	16.1 (0.8)	21.7 (0.7)	27.1 (0.0)
Colon and Rectum	10.0 (1.3)	-	7.5 (2.3)	11.9 (0.7)	9.1 (0.5)	10.8 (0.0)
Corpus and Uterus	4.1 (0.8)	-	6.2 (2.0)	5.5 (0.5)	4.3 (0.3)	5.3 (0.0)
Thyroid	-	-	-	0.9 (0.2)	0.4 (0.1)	0.5 (0.0)
Melanoma of the Skin	-	-	-	0.7 (0.2)	1.4 (0.2)	1.3 (0.0)
Kidney and Renal Pelvis	3.6 (0.8)	-	-	3.3 (0.4)	1.9 (0.2)	2.1 (0.0)
Non-Hodgkin Lymphoma	2.5 (0.7)	-	-	3.5 (0.4)	3.3 (0.3)	3.7 (0.0)
Pancreas	5.8 (1.0)	-	7.2 (2.3)	10.1 (0.6)	8.8 (0.5)	9.9 (0.0)
Ovary	7.0 (1.1)	6.7 (2.2)	-	5.6 (0.5)	5.2 (0.4)	5.9 (0.0)
Leukemia	2.3 (0.6)	-	-	3.8 (0.4)	4.0 (0.4)	4.4 (0.0)
Cervix Uteri	1.8 (0.6)	-	-	3.0 (0.4)	1.6 (0.3)	2.2 (0.0)
Urinary Bladder	-	-	-	2.1 (0.3)	2.3 (0.2)	2.0 (0.0)
Liver and Intrahepatic Bile Duct	8.6 (1.2)	-	-	7.4 (0.5)	3.4 (0.3)	4.3 (0.0)
Stomach	5.3 (0.9)	-	-	3.9 (0.4)	1.0 (0.2)	2.0 (0.0)
Oral Cavity and Pharynx	-	-	-	1.1 (0.2)	1.3 (0.2)	1.4 (0.0)
Myeloma	-	-	-	2.4 (0.3)	1.8 (0.2)	2.4 (0.0)
Brain and Other Nervous System	2.0 (0.6)	-	-	3.2 (0.4)	3.7 (0.3)	3.6 (0.0)
Gallbladder and Other Biliary	2.5 (0.6)	-	-	1.7 (0.3)	1.2 (0.2)	1.1 (0.0)
Other Female Genital Organs	-	-	-	0.7 (0.2)	0.6 (0.1)	0.5 (0.0)

* Rates are per 100,000 and age-adjusted to the 2000 U.S. Standard Population; Standard errors are presented in parentheses

** Data are from 21 SEER Program Registries

- Statistic could not be calculated due to small number of cases

CANCER-RELATED DEATHS

Average Annual Age-Adjusted Mortality Rates* Common Cancer Types – Males New Mexico Residents, 2019-2023

Primary Cancer Type	New Mexico					United States**
	American Indian	Asian or Pacific Islander	Black	Hispanic	Non-Hispanic White	All Races Combined
<i>All Cancers Combined</i>	119.2 (5.4)	78.5 (9.1)	135.7 (10.6)	162.5 (2.9)	152.2 (2.1)	171.5 (0.1)
Prostate	18.6 (2.4)	11.4 (3.8)	38.3 (6.2)	20.2 (1.1)	19.2 (0.7)	19.2 (0.0)
Colon and Rectum	15.1 (1.9)	8.8 (2.8)	14.3 (3.3)	18.0 (0.9)	12.9 (0.7)	15.3 (0.0)
Lung and Bronchus	8.8 (1.5)	20.5 (4.7)	14.4 (3.4)	24.5 (1.1)	26.7 (0.9)	37.2 (0.1)
Kidney and Renal Pelvis	10.1 (1.6)	-	-	6.7 (0.6)	4.2 (0.3)	5.1 (0.0)
Melanoma of the Skin	-	-	-	1.3 (0.3)	3.8 (0.4)	3.0 (0.0)
Urinary Bladder	-	-	-	3.9 (0.5)	7.6 (0.5)	7.1 (0.0)
Non-Hodgkin Lymphoma	5.6 (1.2)	-	-	4.8 (0.5)	5.2 (0.4)	6.4 (0.0)
Leukemia	3.6 (0.8)	-	-	5.8 (0.5)	7.0 (0.5)	7.8 (0.0)
Oral Cavity and Pharynx	-	-	-	3.5 (0.4)	4.3 (0.4)	4.1 (0.0)
Liver and Intrahepatic Bile Duct	12.4 (1.7)	-	11.5 (2.8)	17.6 (0.9)	7.4 (0.5)	9.4 (0.0)
Pancreas	6.0 (1.2)	-	8.8 (2.5)	13.4 (0.8)	10.8 (0.6)	12.9 (0.0)
Thyroid	-	-	-	1.0 (0.2)	0.5 (0.1)	0.5 (0.0)
Stomach	10.1 (1.6)	-	-	5.4 (0.5)	2.2 (0.2)	3.5 (0.0)
Testis	-	-	-	0.6 (0.2)	-	0.3 (0.0)
Myeloma	2.6 (0.8)	-	-	3.7 (0.4)	3.2 (0.3)	3.7 (0.0)
Esophagus	4.3 (1.0)	-	-	4.8 (0.5)	7.3 (0.5)	6.5 (0.0)
Brain and Other Nervous System	-	-	-	4.2 (0.4)	5.9 (0.5)	5.3 (0.0)
Larynx	-	-	-	1.3 (0.2)	1.5 (0.2)	1.6 (0.0)
Soft Tissue including Heart	-	-	-	1.9 (0.3)	0.7 (0.2)	1.5 (0.0)
Gallbladder and Other Biliary	-	-	-	1.6 (0.3)	0.8 (0.2)	0.9 (0.0)

* Rates are per 100,000 and age-adjusted to the 2000 U.S. Standard Population; Standard errors are presented in parentheses

** Data are from 21 SEER Program Registries

- Statistic could not be calculated due to small number of cases