

# Leukemia

## Average Incidence (New Cases) and Cancer-Related Mortality (Deaths) per Year Male New Mexico Residents, 2017-2021

<i>Incidence</i>				
<b>Race/Ethnicity</b>	<b>Age-adjusted rate<sup>†</sup></b>	<b>Average number of new cases</b>	<b>Percent of all new cases</b>	<b>Rank among all new cancer cases<sup>‡</sup></b>
NM, American Indian	8.2	8	3.2%	9
NM, Asian or Pacific Islander	9.2	2	3.5%	11
NM, Black	13.3	4	4.0%	8
NM, Hispanic	12.8	56	3.7%	9
NM, Non-Hispanic White	18.5	114	4.0%	7
NM, All Races Combined	*	197	4.0%	*
US, All Races Combined <sup>§</sup>	17.9	35,920	4.1%	8
<i>Mortality</i>				
<b>Race/Ethnicity</b>	<b>Age-adjusted rate<sup>†</sup></b>	<b>Average number of cancer deaths</b>	<b>Percent of all cancer deaths</b>	<b>Rank among all cancer deaths<sup>‡</sup></b>
NM, American Indian	3.9	4	3.4%	11
NM, Asian or Pacific Islander	-	-	-	-
NM, Black	-	-	-	-
NM, Hispanic	5.3	23	3.3%	9
NM, Non-Hispanic White	-	49	4.3%	7
NM, All Races Combined	*	77	3.9%	*
US, All Races Combined <sup>§</sup>	8.0	13,670	4.3%	9

<sup>†</sup> Rates are per 100,000 and age-adjusted to the 2000 US standard population.

<sup>‡</sup> Rank was determined by sorting the rate.

\* Please refer to the race-specific age-adjusted rates and ranks.

- Statistic and/or rank cannot be calculated or displayed due to a small number of cases.

<sup>§</sup> US incidence rates obtained from Surveillance, Epidemiology and End Results Program (22 SEER registries); estimated number of new US cancer cases obtained from *American Cancer Society. Cancer Facts and Figures 2019. Atlanta: American Cancer Society, 2019*; US mortality rates and number of cancer deaths obtained from National Center for Health Statistics (all states).



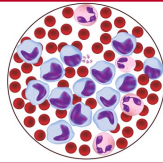
**HEALTH SCIENCES**  
NEW MEXICO TUMOR REGISTRY

Please contact us!

Phone: 505-272-5541

E-Mail: [nmtr-info@salud.unm.edu](mailto:nmtr-info@salud.unm.edu)

URL: [hsc.unm.edu/new-mexico-tumor-registry/](http://hsc.unm.edu/new-mexico-tumor-registry/)



# Leukemia

## Average Incidence (New Cases) and Cancer-Related Mortality (Deaths) per Year Female New Mexico Residents, 2017-2021

<i>Incidence</i>				
<b>Race/Ethnicity</b>	<b>Age-adjusted rate<sup>†</sup></b>	<b>Average number of new cases</b>	<b>Percent of all new cases</b>	<b>Rank among all new cancer cases<sup>‡</sup></b>
NM, American Indian	6.5	8	2.4%	13
NM, Asian or Pacific Islander	2.0	1	0.8%	17
NM, Black	6.6	2	2.7%	7
NM, Hispanic	7.3	36	2.0%	13
NM, Non-Hispanic White	10.4	68	2.7%	9
NM, All Races Combined	*	120	2.5%	*
US, All Races Combined <sup>§</sup>	11.0	25,860		10
<i>Mortality</i>				
<b>Race/Ethnicity</b>	<b>Age-adjusted rate<sup>†</sup></b>	<b>Average number of cancer deaths</b>	<b>Percent of all cancer deaths</b>	<b>Rank among all cancer deaths<sup>‡</sup></b>
NM, American Indian	1.6	2	1.9%	14
NM, Asian or Pacific Islander	-	-	-	-
NM, Black	-	-	-	-
NM, Hispanic	3.3	16	2.7%	11
NM, Non-Hispanic White	4.1	31	3.3%	6
NM, All Races Combined	*	50	3.0%	*
US, All Races Combined <sup>§</sup>	4.5	9,808	3.4%	7

<sup>†</sup> Rates are per 100,000 and age-adjusted to the 2000 US standard population.

<sup>‡</sup> Rank was determined by sorting the rate.

\* Please refer to the race-specific age-adjusted rates and ranks.

- Statistic and/or rank cannot be calculated or displayed due to a small number of cases.

<sup>§</sup> US incidence rates obtained from Surveillance, Epidemiology and End Results Program (22 SEER registries); estimated number of new US cancer cases obtained from *American Cancer Society. Cancer Facts and Figures 2019. Atlanta: American Cancer Society, 2019*; US mortality rates and number of cancer deaths obtained from National Center for Health Statistics (all states).