

Melanoma of the Skin

Average Incidence (New Cases) and Cancer-Related Mortality (Deaths) per Year Male New Mexico Residents, 2017-2021

<i>Incidence</i>				
Race/Ethnicity	Age-adjusted rate[†]	Average number of new cases	Percent of all new cases	Rank among all new cancer cases[‡]
NM, American Indian	5.6	4	1.7%	14
NM, Asian or Pacific Islander	2.1	0	0.8%	19
NM, Black	0.8	0	0.2%	25
NM, Hispanic	4.5	19	1.3%	17
NM, Non-Hispanic White	36.0	235	8.3%	3
NM, All Races Combined	*	270	5.5%	*
US, All Races Combined [§]	27.1	57,220	6.6%	5
<i>Mortality</i>				
Race/Ethnicity	Age-adjusted rate[†]	Average number of cancer deaths	Percent of all cancer deaths	Rank among all cancer deaths[‡]
NM, American Indian	-	-	-	-
NM, Asian or Pacific Islander	-	-	-	-
NM, Black	-	-	-	-
NM, Hispanic	1.3	5	0.7%	18
NM, Non-Hispanic White	4.2	28	2.4%	13
NM, All Races Combined	*	33	1.7%	*
US, All Races Combined [§]	3.0	5,328	1.7%	15

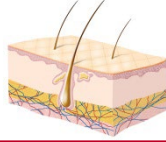
[†] Rates are per 100,000 and age-adjusted to the 2000 US standard population.

[‡] Rank was determined by sorting the rate.

* Please refer to the race-specific age-adjusted rates and ranks.

- Statistic and/or rank cannot be calculated or displayed due to a small number of cases.

[§] US incidence rates obtained from Surveillance, Epidemiology and End Results Program (22 SEER registries); estimated number of new US cancer cases obtained from *American Cancer Society. Cancer Facts and Figures 2019. Atlanta: American Cancer Society, 2019*; US mortality rates and number of cancer deaths obtained from National Center for Health Statistics (all states).



Melanoma of the Skin

Average Incidence (New Cases) and Cancer-Related Mortality (Deaths) per Year Female New Mexico Residents, 2017-2021

<i>Incidence</i>				
Race/Ethnicity	Age-adjusted rate[†]	Average number of new cases	Percent of all new cases	Rank among all new cancer cases[‡]
NM, American Indian	3.8	4	1.4%	18
NM, Asian or Pacific Islander	0.0	0	0.0%	29
NM, Black	0.0	0	0.0%	25
NM, Hispanic	4.6	23	1.3%	16
NM, Non-Hispanic White	23.3	144	5.7%	4
NM, All Races Combined	*	180	3.7%	*
US, All Races Combined [§]	16.9	39,260	4.4%	7
<i>Mortality</i>				
Race/Ethnicity	Age-adjusted rate[†]	Average number of cancer deaths	Percent of all cancer deaths	Rank among all cancer deaths[‡]
NM, American Indian	-	-	-	-
NM, Asian or Pacific Islander	-	-	-	-
NM, Black	-	-	-	-
NM, Hispanic	0.5	3	0.5%	22
NM, Non-Hispanic White	1.6	13	1.3%	15
NM, All Races Combined	*	17	1.0%	*
US, All Races Combined [§]	1.3	2,829	1.0%	18

[†] Rates are per 100,000 and age-adjusted to the 2000 US standard population.

[‡] Rank was determined by sorting the rate.

* Please refer to the race-specific age-adjusted rates and ranks.

- Statistic and/or rank cannot be calculated or displayed due to a small number of cases.

[§] US incidence rates obtained from Surveillance, Epidemiology and End Results Program (22 SEER registries); estimated number of new US cancer cases obtained from *American Cancer Society. Cancer Facts and Figures 2019. Atlanta: American Cancer Society, 2019*; US mortality rates and number of cancer deaths obtained from National Center for Health Statistics (all states).