

Leukemia

Average Incidence (New Cases) and Cancer-Related Mortality (Deaths) per Year Male New Mexico Residents, 2018-2022

<i>Incidence</i>				
Race/Ethnicity	Age-adjusted rate[†]	Average number of new cases	Percent of all new cases	Rank among all new cancer cases[‡]
NM, American Indian	7.2	8	2.9%	9
NM, Asian or Pacific Islander	5.7	1	2.5%	12
NM, Black	13.7	4	3.8%	8
NM, Hispanic	13.7	59	3.7%	9
NM, Non-Hispanic White	18.3	117	4.0%	6
NM, All Races Combined	*	202	3.9%	*
US, All Races Combined [§]	18.2	35,470	4.0%	8
<i>Mortality</i>				
Race/Ethnicity	Age-adjusted rate[†]	Average number of cancer deaths	Percent of all cancer deaths	Rank among all cancer deaths[‡]
NM, American Indian	3.8	4	3.6%	10
NM, Asian or Pacific Islander	-	-	-	-
NM, Black	-	-	-	-
NM, Hispanic	5.1	21	3.1%	9
NM, Non-Hispanic White	7.2	51	4.5%	7
NM, All Races Combined	*	78	3.9%	*
US, All Races Combined [§]	7.9	13,663	4.3%	6

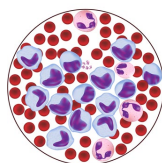
[†] Rates are per 100,000 and age-adjusted to the 2000 US standard population.

[‡] Rank was determined by sorting the rate.

* Please refer to the race-specific age-adjusted rates and ranks.

- Statistic and/or rank cannot be calculated or displayed due to a small number of cases.

[§] US incidence rates obtained from Surveillance, Epidemiology and End Results Program (21 SEER registries); estimated number of new US cancer cases obtained from *American Cancer Society. Cancer Facts and Figures 2020. Atlanta: American Cancer Society, 2020*; US mortality rates and number of cancer deaths obtained from National Center for Health Statistics (all states).



Leukemia

Average Incidence (New Cases) and Cancer-Related Mortality (Deaths) per Year Female New Mexico Residents, 2018-2022

<i>Incidence</i>				
Race/Ethnicity	Age-adjusted rate[†]	Average number of new cases	Percent of all new cases	Rank among all new cancer cases[‡]
NM, American Indian	5.5	7	2.2%	14
NM, Asian or Pacific Islander	2.8	1	1.1%	16
NM, Black	5.9	2	2.6%	7
NM, Hispanic	7.7	37	2.1%	13
NM, Non-Hispanic White	10.1	69	2.6%	9
NM, All Races Combined	*	123	2.5%	*
US, All Races Combined [§]	11.3	25,060	2.7%	10
<i>Mortality</i>				
Race/Ethnicity	Age-adjusted rate[†]	Average number of cancer deaths	Percent of all cancer deaths	Rank among all cancer deaths[‡]
NM, American Indian	2.0	2	2.2%	12
NM, Asian or Pacific Islander	-	-	-	-
NM, Black	-	-	-	-
NM, Hispanic	3.4	17	2.8%	11
NM, Non-Hispanic White	4.1	32	3.3%	6
NM, All Races Combined	*	52	3.0%	*
US, All Races Combined [§]	4.5	9,809	3.4%	7

[†] Rates are per 100,000 and age-adjusted to the 2000 US standard population.

[‡] Rank was determined by sorting the rate.

* Please refer to the race-specific age-adjusted rates and ranks.

- Statistic and/or rank cannot be calculated or displayed due to a small number of cases.

[§] US incidence rates obtained from Surveillance, Epidemiology and End Results Program (21 SEER registries); estimated number of new US cancer cases obtained from *American Cancer Society. Cancer Facts and Figures 2020. Atlanta: American Cancer Society, 2020*; US mortality rates and number of cancer deaths obtained from National Center for Health Statistics (all states).