

Melanoma of the Skin

Average Incidence (New Cases) and Cancer-Related Mortality (Deaths) per Year Male New Mexico Residents, 2018-2022

<i>Incidence</i>				
Race/Ethnicity	Age-adjusted rate[†]	Average number of new cases	Percent of all new cases	Rank among all new cancer cases[‡]
NM, American Indian	6.1	5	1.7%	13
NM, Asian or Pacific Islander	0.0	<1	0.0%	26
NM, Black	0.7	<1	0.2%	26
NM, Hispanic	5.1	21	1.3%	17
NM, Non-Hispanic White	37.7	256	8.7%	3
NM, All Races Combined	*	290	5.7%	*
US, All Races Combined [§]	27.8	60,190	6.7%	5
<i>Mortality</i>				
Race/Ethnicity	Age-adjusted rate[†]	Average number of cancer deaths	Percent of all cancer deaths	Rank among all cancer deaths[‡]
NM, American Indian	-	-	-	-
NM, Asian or Pacific Islander	-	-	-	-
NM, Black	-	-	-	-
NM, Hispanic	1.2	5	0.7%	18
NM, Non-Hispanic White	3.9	27	2.4%	14
NM, All Races Combined	*	32	1.6%	*
US, All Races Combined [§]	3.0	5,337	1.7%	15

[†] Rates are per 100,000 and age-adjusted to the 2000 US standard population.

[‡] Rank was determined by sorting the rate.

* Please refer to the race-specific age-adjusted rates and ranks.

- Statistic and/or rank cannot be calculated or displayed due to a small number of cases.

[§] US incidence rates obtained from Surveillance, Epidemiology and End Results Program (21 SEER registries); estimated number of new US cancer cases obtained from *American Cancer Society. Cancer Facts and Figures 2020. Atlanta: American Cancer Society, 2020*; US mortality rates and number of cancer deaths obtained from National Center for Health Statistics (all states).



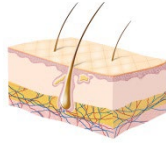
HEALTH SCIENCES
NEW MEXICO TUMOR REGISTRY

Please contact us!

Phone: 505-272-5541

E-Mail: nmtr-info@salud.unm.edu

URL: hsc.unm.edu/new-mexico-tumor-registry/



Melanoma of the Skin

**Average Incidence (New Cases) and Cancer-Related Mortality (Deaths) per Year
Female New Mexico Residents, 2018-2022**

<i>Incidence</i>				
Race/Ethnicity	Age-adjusted rate[†]	Average number of new cases	Percent of all new cases	Rank among all new cancer cases[‡]
NM, American Indian	3.3	4	1.2%	17
NM, Asian or Pacific Islander	1.1	<1	0.5%	21
NM, Black	0.0	<1	0.0%	29
NM, Hispanic	4.7	23	1.3%	17
NM, Non-Hispanic White	22.9	149	5.7%	4
NM, All Races Combined	*	182	3.7%	*
US, All Races Combined [§]	17.5	40,160	4.4%	6
<i>Mortality</i>				
Race/Ethnicity	Age-adjusted rate[†]	Average number of cancer deaths	Percent of all cancer deaths	Rank among all cancer deaths[‡]
NM, American Indian	-	-	-	-
NM, Asian or Pacific Islander	-	-	-	-
NM, Black	-	-	-	-
NM, Hispanic	0.8	4	0.6%	21
NM, Non-Hispanic White	1.4	12	1.3%	16
NM, All Races Combined	*	17	1.0%	*
US, All Races Combined [§]	1.3	2,857	1.0%	18

[†] Rates are per 100,000 and age-adjusted to the 2000 US standard population.

[‡] Rank was determined by sorting the rate.

* Please refer to the race-specific age-adjusted rates and ranks.

- Statistic and/or rank cannot be calculated or displayed due to a small number of cases.

[§] US incidence rates obtained from Surveillance, Epidemiology and End Results Program (21 SEER registries); estimated number of new US cancer cases obtained from *American Cancer Society. Cancer Facts and Figures 2020. Atlanta: American Cancer Society, 2020*; US mortality rates and number of cancer deaths obtained from National Center for Health Statistics (all states).



HEALTH SCIENCES
NEW MEXICO TUMOR REGISTRY

Please contact us!

Phone: 505-272-5541

E-Mail: nmtr-info@salud.unm.edu

URL: hsc.unm.edu/new-mexico-tumor-registry/