

Myeloma

Average Incidence (New Cases) and Cancer-Related Mortality (Deaths) per Year Male New Mexico Residents, 2018-2022

| <i>Incidence</i> | | | | |
|-------------------------------------|--------------------------------------|--|-------------------------------------|--|
| Race/Ethnicity | Age-adjusted rate[†] | Average number of new cases | Percent of all new cases | Rank among all new cancer cases[‡] |
| NM, American Indian | 7.0 | 7 | 2.7% | 10 |
| NM, Asian or Pacific Islander | 3.2 | 1 | 1.6% | 14 |
| NM, Black | 10.7 | 3 | 3.3% | 9 |
| NM, Hispanic | 6.8 | 29 | 1.8% | 14 |
| NM, Non-Hispanic White | 6.2 | 45 | 1.5% | 16 |
| NM, All Races Combined | * | 88 | 1.7% | * |
| US, All Races Combined [§] | 8.8 | 17,530 | 2.0% | 13 |
| <i>Mortality</i> | | | | |
| Race/Ethnicity | Age-adjusted rate[†] | Average number of cancer deaths | Percent of all cancer deaths | Rank among all cancer deaths[‡] |
| NM, American Indian | 3.4 | 3 | 2.7% | 11 |
| NM, Asian or Pacific Islander | - | - | - | - |
| NM, Black | - | - | - | - |
| NM, Hispanic | 3.7 | 15 | 2.1% | 13 |
| NM, Non-Hispanic White | 4.0 | 29 | 2.6% | 13 |
| NM, All Races Combined | * | 48 | 2.4% | * |
| US, All Races Combined [§] | 3.8 | 6,836 | 2.2% | 13 |

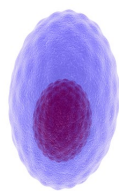
[†] Rates are per 100,000 and age-adjusted to the 2000 US standard population.

[‡] Rank was determined by sorting the rate.

* Please refer to the race-specific age-adjusted rates and ranks.

- Statistic and/or rank cannot be calculated or displayed due to a small number of cases.

[§] US incidence rates obtained from Surveillance, Epidemiology and End Results Program (21 SEER registries); estimated number of new US cancer cases obtained from *American Cancer Society. Cancer Facts and Figures 2020*. Atlanta: American Cancer Society, 2020; US mortality rates and number of cancer deaths obtained from National Center for Health Statistics (all states).



Myeloma

Average Incidence (New Cases) and Cancer-Related Mortality (Deaths) per Year Female New Mexico Residents, 2018-2022

| <i>Incidence</i> | | | | |
|-------------------------------------|--------------------------------------|--|-------------------------------------|--|
| Race/Ethnicity | Age-adjusted rate[†] | Average number of new cases | Percent of all new cases | Rank among all new cancer cases[‡] |
| NM, American Indian | 5.2 | 6 | 1.9% | 15 |
| NM, Asian or Pacific Islander | 3.0 | 1 | 1.1% | 15 |
| NM, Black | 4.5 | 1 | 1.7% | 11 |
| NM, Hispanic | 4.8 | 24 | 1.3% | 15 |
| NM, Non-Hispanic White | 4.0 | 33 | 1.3% | 16 |
| NM, All Races Combined | * | 67 | 1.3% | * |
| US, All Races Combined [§] | 6.1 | 14,740 | 1.6% | 15 |
| <i>Mortality</i> | | | | |
| Race/Ethnicity | Age-adjusted rate[†] | Average number of cancer deaths | Percent of all cancer deaths | Rank among all cancer deaths[‡] |
| NM, American Indian | - | - | - | - |
| NM, Asian or Pacific Islander | - | - | - | - |
| NM, Black | - | - | - | - |
| NM, Hispanic | 2.7 | 13 | 2.2% | 14 |
| NM, Non-Hispanic White | 1.6 | 15 | 1.5% | 13 |
| NM, All Races Combined | * | 31 | 1.8% | * |
| US, All Races Combined [§] | 2.4 | 5,491 | 1.9% | 11 |

[†] Rates are per 100,000 and age-adjusted to the 2000 US standard population.

[‡] Rank was determined by sorting the rate.

* Please refer to the race-specific age-adjusted rates and ranks.

- Statistic and/or rank cannot be calculated or displayed due to a small number of cases.

[§] US incidence rates obtained from Surveillance, Epidemiology and End Results Program (21 SEER registries); estimated number of new US cancer cases obtained from *American Cancer Society. Cancer Facts and Figures 2020*. Atlanta: American Cancer Society, 2020; US mortality rates and number of cancer deaths obtained from National Center for Health Statistics (all states).