

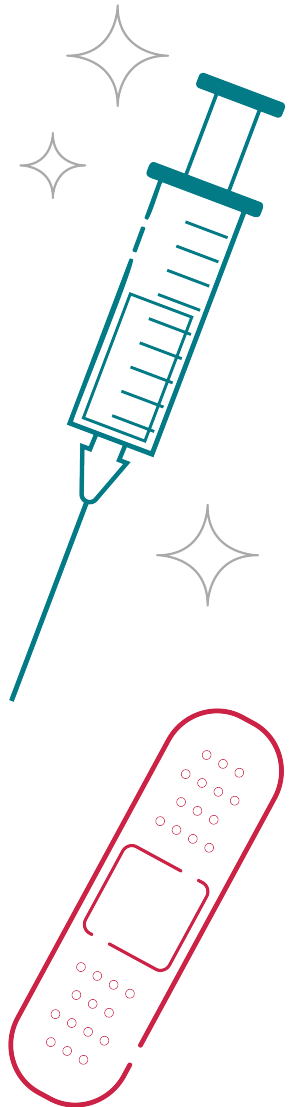
FREE FLU SHOTS

2024-2025 FLU SEASON CLINICS FOR
HEALTH SYSTEM EMPLOYEES



EMPLOYEE FLU CLINIC SCHEDULE

DATE	TIME	LOCATION
Tuesday, Oct. 1	8 a.m. - Noon	2 ACC
Thursday, Oct. 3	8 a.m. - Noon	2 ACC
Tuesday, Oct. 8	8 a.m. - Noon	2 ACC
Thursday, Oct. 10	8 a.m. - Noon	2 ACC
Tuesday, Oct. 15	8 a.m. - Noon	2 ACC
Thursday, Oct. 17	9 a.m. - Noon	Planning & Construction (1301 University Blvd. NE)
Tuesday, Oct. 22	8 a.m. - 11 a.m.	Pecos Room (North Campus near College of Nursing)
Thursday, Oct. 24	9 a.m. - Noon	OMI (SLD east training room, 1101 Camino de Salud)
Tuesday, Oct. 29	8 a.m. - Noon	2 ACC
Wednesday, Oct. 30	9 a.m. - Noon	1650 University Blvd. (Rm 1900)
Tuesday, Nov. 5	8 a.m. - Noon	2 ACC
Thursday, Nov. 7	8 a.m. - Noon	HOPE Building Large Breakroom (933 Bradbury Dr. SE)
Tuesday, Nov. 12	8 a.m. - Noon	2 ACC
Thursday, Nov. 14	9 a.m. - Noon	Patient Financial Services (400 Tijeras Ave. NW)
Tuesday, Nov. 19	8 a.m. - Noon	2 ACC
Thursday, Nov. 21	8 a.m. - Noon	2 ACC
Tuesday, Nov. 26	8 a.m. - Noon	2 ACC



**BE SURE TO
GET YOUR
FLU SHOT!**

We will NOT be distributing COVID vaccines. Please contact your primary care provider or visit a local pharmacy.