

RESEARCH ANNUAL REPORT 2024

# DISCOVERY

## THE BRAIN ISSUE

### DESPERATE MEASURES

Amid Growing Concerns, UNM Scientists Find a New Way to Quantify Microplastics in the Body



TURNING RESEARCH INTO CURES



**VISION**

Transform health care and health science education and research to improve health and health equity for New Mexico and beyond.

**MISSION**

We exist to lead New Mexico toward health equity through our unique integration of care delivery, education, discovery and innovation and through advocacy and collaborations. We celebrate the diverse cultures and history of our state while creating an inclusive and compassionate community that makes UNM Health Sciences an extraordinary place to study, work and serve.

**CORE VALUES**

**HEALING:** Both within individuals and among our communities in order to cultivate hope, care and joy.

**EQUITY:** For all New Mexicans in health, education and economic opportunity.

**EXCELLENCE:** In health care, education and research and in building a place where people seek to study, work and serve.

**INNOVATION:** In all aspects of our mission, enabling us to rise to the health, workforce and economic challenges of our time.

**COMPASSION:** In how we treat our patients, students, each other and ourselves.

**SERVICE:** Accountable to our diverse communities across New Mexico.

**Managing Editor**

Michael Haederle

**Graphic Designer & Illustrator**

Claire Hannon

**Contributing Editor**

Nicole San Roman

**Photographer**

Jett Loe

**Art Director**

Sara Mota

**Design Support**

Sarah Head

© 2024 The University of New Mexico Health Sciences Office of Research

Special thanks to Aida Andujo, Rosemarie Sanchez and James MacFarlane for their assistance

[hsc.unm.edu/research](https://hsc.unm.edu/research)

**TABLE OF CONTENTS**

**LETTERS**

From the Interim Executive Vice President for Health Sciences & Chief Executive Officer for the UNM Health System 02

From the Vice President for Research 03

**FEATURED STORIES**

Desperate Measures: Amid Growing Concerns, UNM Scientists Find a New Way to Quantify Microplastics in the Body 04

Puzzling Polymers: How a Pathologist’s Hunch Led to a New Way to Identify Microplastics in the Brain 08

Sisterhood is Powerful: Tertulias Peer Support Groups Help Immigrant Women Find Their Voices and Overcome Isolation 10

Trip to Wellness: Testing Psychedelic Drugs as Treatments for Depression, PTSD and More 12

Tackling the Challenge of Dementia: UNM’s Center for Memory & Aging Receives \$21.7 Million Grant to Fund Alzheimer’s Disease Research Center 16

Continuing the Work: UNM’s New Mexico Alcohol Research Center Receives Renewed Grant Funding to Study Fetal Alcohol Spectrum Disorder 18

Inventive Faculty: Health Sciences Researchers Make Their Mark as UNM Rainforest Innovation Fellows 20

2024 TRAINING GRANTS 24

2024 EXCELLENCE IN RESEARCH AWARDS 32

RESEARCH 2024 CENTER LISTING 34

CONTRACTS AND GRANTS 35





**The University of New Mexico Health Sciences research enterprise is, in some ways, our best-kept secret.** While our hospitals and clinics and health professions education programs may be more visible to the general public, our scientists conduct exciting research that benefits New Mexicans in myriad ways.

This year's Research Annual Report offers some examples of that important work.

You'll learn how Health Sciences researchers Matthew Campen, PhD, and Elaine Bearer, MD, PhD, and their colleagues, have devised new ways to identify and quantify the presence of microplastics in human tissue. Given that microplastics are ubiquitous in the environment – and worldwide plastic production continues unabated – this is a critical contribution to an emerging avenue of research.

Our scientists are also playing a prominent role in the search for new, more effective therapies for a variety of behavioral health concerns, including the use of psychedelic compounds to treat depression and PTSD. This work, led by Lawrence Leeman, MD, and Snehal Bhatt, MD, builds on UNM's decades-long research in this area.

Health Sciences research is not just confined to the laboratory. The Tertulias project, led by Janet Page-Reeves, PhD, is a highly effective community-based intervention for immigrant women that has proven its worth by transforming lives and improving participants' mental and physical health.

The UNM Center for Memory & Aging, led by Gary Rosenberg, MD, is now home to the National Institutes of Health-funded Alzheimer's Disease Research Center, offering New Mexicans the prospect of increased access to important new studies and clinical trials aimed at diagnosing and treating dementia.

Meanwhile, under the leadership of C. Fernando Valenzuela, MD, the New Mexico Alcohol Research Center has secured continued funding for studies that include the search for biomarkers associated with fetal alcohol spectrum disorder, a condition that affects many throughout our state.

Many of these accomplishments have been supported by new research infrastructure, as well as established programs, including the UNM Clinical & Translational Science Center and the UNM Comprehensive Cancer Center.

These achievements – and many others – have come about in part due to our ability to attract substantial extramural funding. In addition to supporting our research, this funding helps to stimulate our state's economy by creating and sustaining new jobs and spurring the creation of spin-off businesses.

I'm grateful to all of our research faculty for their many impactful accomplishments. Their creativity, compassion and commitment make them an invaluable resource for all New Mexicans.

**Michael E. Richards, MD, MPA**  
Interim Executive Vice President for UNM Health Sciences  
CEO, UNM Health System

**I am very pleased to report that The University of New Mexico Health Sciences has once again surpassed itself,** achieving nearly \$259 million in extramural grant funding for FY 2024.

This vital funding fuels basic scientific discoveries that lead to translational breakthroughs, supports clinical trials that advance treatment options and bring the latest therapies to New Mexico patients, and addresses critical community health needs, such as access to high quality care, health disparities, child well-being and the impacts of substance use disorders.

Our research portfolio also contributes greatly to New Mexico's economy, generating jobs and fostering growth in the biotech sector. I could not be any prouder for all the contributions we have made to advancing science.

This report highlights selected ground-breaking work underway at our institution. UNM has been at the forefront of research on the presence of microplastics within our bodies and their potential role in cellular mechanisms of disease.

We are collaborating with communities throughout our state to develop scalable interventions, such as a mixed-methods study aimed at alleviating social isolation, depression and stress among women immigrants from Mexico.

In addition, FY 2024 has marked substantial growth in our research infrastructure through the funding of prestigious centers. UNM Health Sciences is now home to a National Institute of Aging-designated Alzheimer's Disease Research Center, and the long-standing New Mexico Alcohol Research Center secured competitive funding to continue its essential work on fetal alcohol spectrum disorders.

UNM's extraordinary centers and core facilities foster mentorship and support the development of a robust research workforce, ensuring future discoveries and

pathways for skilled researchers dedicated to advancing biomedical knowledge.

This year we also continued to enhance our research mission through strategic areas of emphasis, including the creation of a new Center for Advancing Dissemination and Implementation Science to promote research on the adoption of evidence-based practices into diverse clinical settings. We also enhanced support for data science and AI and machine learning and built new administrative infrastructure for grant writing and proposal development.

I'd like to express my deepest gratitude to all of our dedicated faculty researchers, staff and learners whose hard work and passion make our achievements possible. As I often say, research brings hope. I am excited to see how in the upcoming year our collective efforts will continue to provide new opportunities and make meaningful contributions to improving health and saving lives.

**Hengameh Raissy, PharmD**  
Vice President for Research, Health Sciences



# DESPERATE MEASURES

## Amid Growing Concerns, UNM Scientists Find a New Way to Quantify Microplastics in the Body

By Michael Haederle & Nicole San Roman

**Scientists are finding microplastics everywhere they look in the human body these days. Tiny polymer particles have been found lodged in the digestive tract, testicles, placentas – even the brain.**

Measuring how much plastic is in human tissue poses vexing challenges, however. Investigators have had to painstakingly count the micro- and nano-scale bits of plastic visible under a microscope to arrive at an estimate.

### Until now, that is.

Toxicologist Matthew Campen and his University of New Mexico Health Sciences colleagues have devised a clever method for precisely quantifying assorted microplastics in the body, and their work has drawn worldwide attention to an underappreciated problem.

The team uses pyrolysis-gas chromatography-mass spectrometry (Py-GC/MS) to identify as many as 12 different types of plastic, while at the same time measuring the quantity of particles in a given tissue sample.

They outlined the technique in a February 2024 paper published in the journal Toxicological Sciences, in which they reported finding microplastics in all 62 of the human placenta samples they tested, with concentrations ranging from 6.5 to 790 micrograms per gram of tissue (a microgram is a millionth of a gram).

In another paper published in the same journal, Xiaozhong “John” Yu, MD, PhD, MPH, a professor in the UNM College of Nursing, reported finding microplastics in 47 canine and 23 human testicular tissue samples using the same analytical technique.

In dogs, the average concentration of microplastics was 122.63 micrograms per gram of tissue. In human tissue the average concentration was 329.44 micrograms per gram – nearly three times higher, and significantly higher than the average concentration Campen found in placental tissue.

Although those numbers may seem small, Campen worries about the unforeseen health consequences from a steadily rising volume of microplastics in the environment.

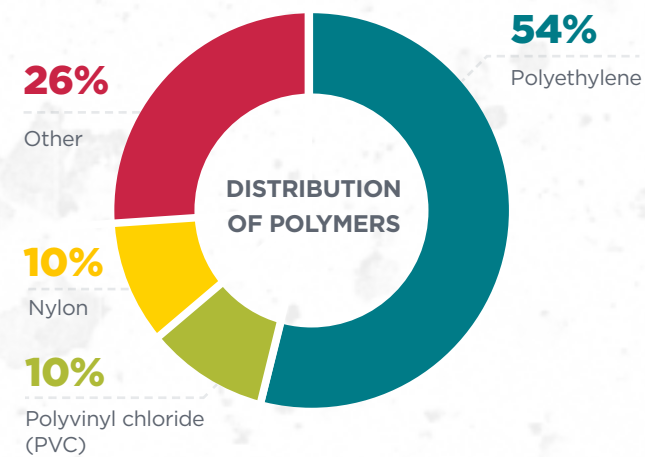
For toxicologists, “Dose makes the poison,” says Campen, Distinguished and Regents’ Professor in the UNM College of Pharmacy. “If the dose keeps going up, we start to worry. If we’re seeing effects on placentas, then all mammalian life on this planet could be impacted. That’s not good.”

When analyzing tissue samples from various organs Campen and his colleagues start by chemically treating them to “digest” the fat and proteins into a kind of soap – a process called saponification.

The samples are then spun in an ultracentrifuge, leaving behind a small nugget of plastic that is then subjected to pyrolysis, which entails heating the sample to 600 degrees Celsius and capturing the gas emissions.

“The gas emission goes into a mass spectrometer and gives you a specific fingerprint,” Campen said. “It’s really cool.”

In the placenta study, the researchers found the most prevalent polymer was polyethylene, widely used to make plastic bags and bottles. It accounted for 54% of the total plastics. Polyvinyl chloride (better known as PVC) and nylon each represented about 10% of the total, with the remainder consisting of nine other polymers.



Marcus Garcia, PharmD, a postdoctoral fellow who performed many of the experiments, said that until now, it has been difficult to quantify how much microplastic was present in human tissue. With the new approach, he said, “We can take it to that next step to be able to adequately quantify it and say, ‘This is how many micrograms or milligrams,’ depending on the plastics that we have.”

**Measuring Microplastics**

**1** Researchers chemically treat the tissue sample in a process called saponification.

The sample is then spun in an ultracentrifuge, leaving behind a small mass of plastic.

**2** The samples then go through pyrolysis. This heats the plastic sample to 600 degrees Celsius and captures the gas emissions.

**3** The gas emissions go into a mass spectrometer which gives you a specific fingerprint.

Specific polymers have a specific mass spectra.

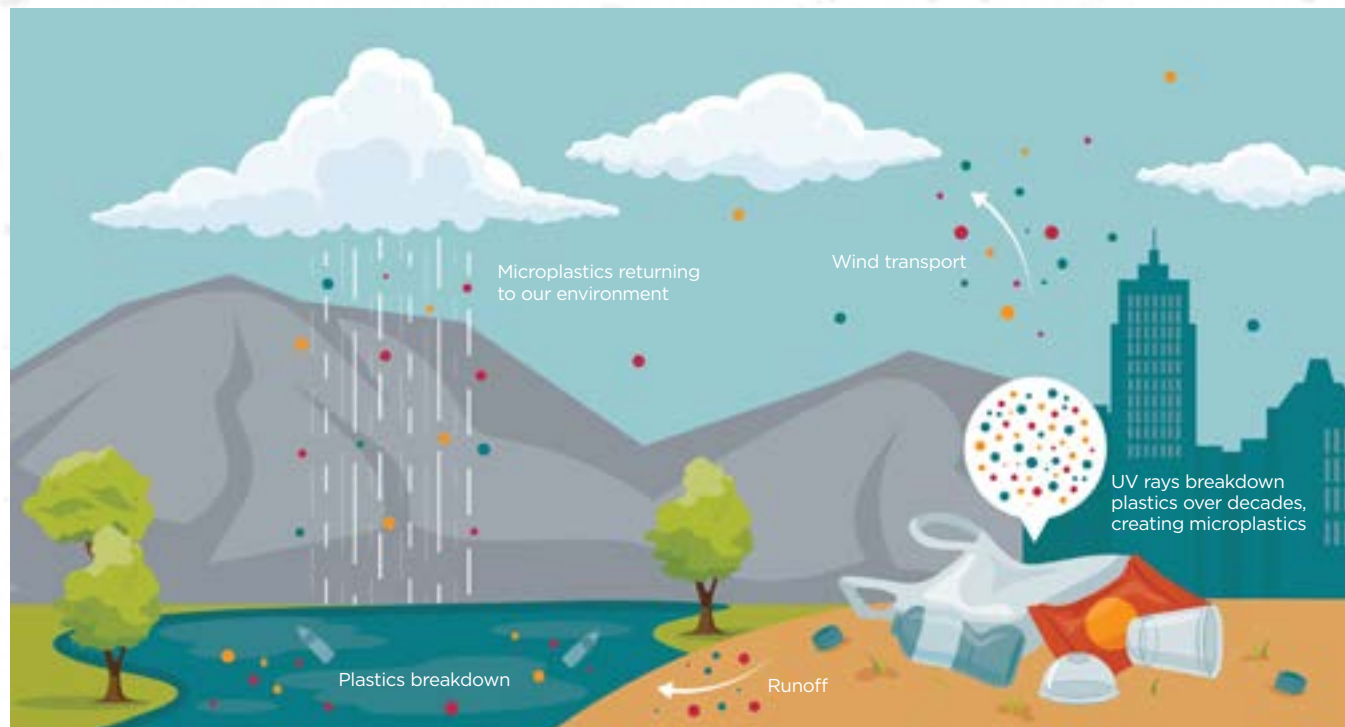
Plastic use worldwide has grown exponentially since the early 1950s, amounting to a metric ton of plastic waste for every person on the planet. About a third of the plastic that has been produced is still in use, but most of the rest has been discarded or sent to landfills, where it breaks down into ever-smaller fragments from exposure to ultraviolet radiation present in sunlight, eventually forming microplastics.

“That ends up in groundwater, and sometimes it aerosolizes and ends up in our environment,” Garcia said. “We’re not only getting it from ingestion, but also through inhalation as well. It not only affects us as humans, but all of our animals – chickens, livestock – and all of our plants. We’re seeing it in everything.”

The growing concentration of microplastics in human tissue might explain puzzling increases in some types of health problems, such as inflammatory bowel disease and colon cancer in people under 50, as well as the declining sperm counts seen around the globe, Campen said.

Yu, who studies the impact of various environmental factors on the human reproductive system, said it was Campen who drew his attention to the ubiquity of microplastics in the environment.

“He said, ‘Have you considered why there is this decline (in reproductive potential) more recently? There must be something new,’” Yu said. That led Yu to design a study



Campen points out that many plastics have a long half-life – the amount of time needed for half of a sample to degrade. “The half-life of some things is 300 years and the half-life of others is 50 years, but between now and 300 years some of that plastic gets degraded,” he said. “Those microplastics that we’re seeing in the environment are probably 40 or 50 years old.”

While microplastics are already present in our bodies, it is unclear what, if any, health effects they might be having. Plastics have traditionally been assumed to be biologically inert, but some particles are so small they are measured in nanometers – a billionth of a meter – and are capable of crossing cell membranes, he said.

using the same experimental method Campen’s lab had used in the placenta research.

His team obtained anonymized human testicular tissue from the Office of the Medical Investigator, which collects tissue samples during autopsies and stores them for seven years before disposing them. Canine testicular tissue came from City of Albuquerque animal shelters and private veterinary clinics that perform spay-neutering operations.

“At the beginning, I doubted whether microplastics could penetrate the reproductive system,” Yu said. “When I first received the results for dogs I was surprised. I was even more surprised when I received the results for humans.”

The findings point the way for additional research to understand how microplastics might affect sperm production in the testes, he said. “We have a lot of unknowns. We need to really look at what the potential long-term effect. Are microplastics one of the factors contributing to this decline?”

While Campen and Yu map out new studies to establish whether microplastics affect human health, their collaborator, Eliseo Castillo, PhD, associate professor in the Department of Molecular Genetics & Microbiology, has already demonstrated that the micro particles can pass through a protective layer of epithelial cells in the gut into the bloodstream and infiltrate organs throughout the body.

Over a four-week period, Castillo’s team exposed mice to water that contained microplastics, so that they swallowed an amount equivalent to the quantity of microplastics humans are believed to ingest each week.

“We could detect microplastics in certain tissues after the exposure,” Castillo says. “That tells us it can cross the intestinal barrier and infiltrate into other tissues.” The study showed the microplastics changed metabolic pathways in the various tissues. Evidence of microplastics was found outside the gut in the liver, kidney and even the brain.

Castillo has previously found that microplastics are also affecting macrophages – immune system cells that work to protect the body from foreign particles.

In a paper published in the journal *Cell Biology & Toxicology* in 2021, Castillo and other UNM researchers reported that when macrophages encountered and ingested microplastics, their function was altered and they released inflammatory molecules.

“It is changing the metabolism of the cells, which can alter inflammatory responses,” he says. “During intestinal inflammation, states of chronic illness such as ulcerative colitis and Crohn’s disease – both forms of IBD – these macrophages become more inflammatory and they’re more abundant in the gut.”

For Campen, meanwhile, the continued production of plastics worldwide is reason for deep concern.

“It’s only getting worse, and the trajectory is it’ll double every 10 to 15 years,” he said, “so even if we were to stop it today, in 2050 there will be three times as much plastic in the background as there as now. And we’re not going to stop it today.” 🗑️



Matthew Campen, PhD, analyzes microplastics in his lab on the UNM Health Sciences campus

# P U Z Z L I N G P O L Y M E R S

## How a Pathologist's Hunch Led to a New Way to Identify Microplastics in the Brain

By Michael Haederle

**In December 2023, University of New Mexico neuropathologist Elaine Bearer, MD, PhD, was methodically studying brain tissue samples from two deceased dementia patients when she noticed something peculiar.**

"I'm seeing these things in the microscope that I can't figure out what they are," recalled Bearer, Distinguished Professor in the UNM Department of Pathology and director of the neuropathology core for the UNM Alzheimer's Disease Research Center (ADRC). "They're strange brown lumpy things."

### It was the prologue to a scientific detective story.

Pathologists typically use a variety of stains to highlight and classify microscopic structures in tissue, but these tiny blobs resisted identification, Bearer said. Then a colleague – Natalie Adolphi, PhD – suggested that she send the samples to Matthew Campen, PhD, a Distinguished Professor in the College of Pharmacy, who has found a way to extract and quantify the microplastics in human tissue.

Microplastics are formed when plastic is degraded and broken down over the course of decades, often through exposure to ultraviolet (UV) rays in sunlight. Scientists

report that microplastics are now so ubiquitous in the environment that they have found their way into the food chain – and into the human body. Campen's lab has documented substantial amounts of microplastics in human brains stored in tissue repositories. But when postdoctoral fellow Marcus Garcia, PharmD, RPh, tested the tissue from the brains of the demented patients Bearer had been studying, he isolated about 20 grams of plastic – many times the amount in "normal" brains.

Now Bearer knew that the two dementia patients – one of whom had Alzheimer's and the other who suffered from a condition known as Binswanger's disease – had excessive amounts of plastic in their brains. ADRC director Gary Rosenberg, MD, had followed the male Binswanger's patient for seven years prior to his death.

"The first thing I did was I took some of the purified plastics from the Binswanger's case and I did electron microscopy on it," Bearer said. "They don't look like the same plastics that Matt is getting. They're different, they're a different shape. They actually have a different chemical composition."

She still couldn't identify the brown spots she had seen under the microscope but she had a hunch.

"It's very interesting that there's a lot more plastics in these demented brains than we found in normal brains,"



Elaine Bearer, MD, PhD, in her office at Reginald Heber Fitz Hall on the UNM North Campus

Bearer said. "I wanted to know if those brown deposits were the plastics, but there wasn't any way to stain it specifically for plastics."

During a brief sabbatical at the California Institute of Technology, Bearer used a confocal laser scanning microscope to study purified samples of the plastics Campen's team had isolated. She exposed the plastic particles to 10 lasers that emitted a broad spectrum of wavelengths of light and finally found a UV frequency that caused them to fluoresce, so that they emitted light at a slightly longer wavelength.

Back in New Mexico, she re-examined the brain tissue samples while illuminating them with the same wavelength and found that the brown spots in the tissue fluoresced, confirming that they were bits of microplastic.

Now that she has found a way to image microplastics in the brain, Bearer has been sharing her discovery with peers, presenting her findings at a Society for Neuroscience meeting. He has also submitted a paper for publication in the journal of the International Society for Magnetic Resonance in Medicine.

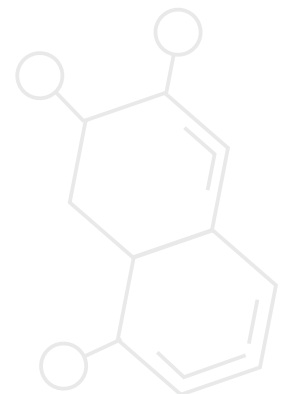
"I've now talked with four other neuropathologists across the country," she said. "I showed them my pictures and

they said, 'Oh my God, I've seen these, too. I saw them in my specimens and I couldn't stain them. I didn't know what they were.' Then I showed them that they're plastics, and they go, 'Of course.'"

Bearer's findings, coupled with those from the Campen lab, raise intriguing questions. Could an excessive accumulation of plastics in the brain trigger dementia symptoms? Or, are people with dementia pathology less able to clear plastics from the brain, leading to a build-up?

She says it's too soon to tell. "I don't have enough samples to do any kind of statistics, and I can't say – because I'm only looking at dead people – I can't see the plastic as causative."

Going forward, Bearer hopes to examine additional brain tissue from patients enrolled in ADRC studies to learn more about where the microplastics are most prone to accumulate. She also holds out hope for being able to diagnose dementia pathology in living patients using magnetic resonance imaging. 🗨️



# SISTERHOOD IS POWERFUL

## Tertulias Peer Support Groups Help Immigrant Women Find Their Voices and Overcome Isolation

By Michael Haederle

**In April 2020 University of New Mexico researcher Janet Page-Reeves started recruiting women immigrants from Mexico to participate in Tertulias, an R01 grant-funded study to evaluate whether a peer support group could reduce their social isolation, depression and stress.**

The women met once a week for two hours via Zoom for wide-ranging conversations conducted in Spanish and moderated by a facilitator. By the time data collection concluded in June 2024, 252 women had taken part in the randomized controlled trial – and the results were dramatic.

“As a result of the intervention their lives have been transformed,” said Page-Reeves, professor and vice chair for research for the Department of Family & Community Medicine and director of research for the UNM Office for Community Health (OCH), who served as principal investigator on the grant. “They left domestic violence relationships. Many of them have gone on and gotten certified as community health workers.”

Tertulias – informal social gatherings or chats – afforded the women a safe space in which to share their experiences and build trusted friendships while drawing on their “funds of knowledge,” Page-Reeves said. It’s the idea “that women bring with them wisdom, lived experience – knowledge that isn’t normally considered to be of interest.”

The project also invited women to share their experiences through creative projects, including stories, drawings, paintings, photographs, recipes and poetry. The work was curated by a group of nine Tertulias participants and displayed at a gala event held at the

National Hispanic Cultural Center on Oct. 19, 2024. In the study, supported by the National Institute on Minority Health and Health Disparities, half of the participants were randomized to a control group. All of the participants were fluent in Spanish and reported income below 250% of the federal poverty level.

Those in the active intervention cohort were divided into groups of about 10 people each and participated in the weekly conversations for 10 to 12. They were also encouraged to stay connected with one another via WhatsApp in between their Zoom meetups. (Those assigned to a control group had periodic phone check-ins with a staff member.)



The project was conducted in collaboration with two Albuquerque organizations: Centro Sávila, a mental health and case management program, and the One Hope Clinic, which originated with East Central Ministries, but is now run by OCH.

Lidia Regino, co-principal investigator for the Tertulias study, is a Health Extension Regional Officer for OCH based in Albuquerque’s International District. She also served as the main facilitator for the weekly conversations. “We didn’t know what we would face,” she said. “Every week was different.”

Often, the facilitated chats were relatively lighthearted, covering topics like food, cultural celebrations and books, but on occasion, the discussions could turn dark.

“Through this venue there were women who, by feeling so connected and so heard, they talked about things that they had never talked about with anyone before,” Regino said. Some even described surviving sexual assault during their journey across the border from Mexico to the U.S.

“We heard a lot of difficult stories,” she said. “You just have to find ways to lead the group in a sense where, ‘Let’s learn about what this means, let’s learn about what this is and then let’s find a healing place.’” In such cases, the researchers would follow up with those who had disclosed traumatic events and offer them more extensive support in the form of therapy, she said.

Domestic violence was a pervasive problem affecting many of the participants, Regino said. The facilitators devised safe words and emergency words for women to use to indicate that their abuser was in the room listening to the conversation – or whether they were actively in danger. “We had four or five situations, where they were like, ‘OK, he got here. If you see him yank the phone away from me, call the police.’”

Regino said she was inspired by a one participant – a domestic violence survivor – who now works connecting other women to the resources they need, stressing the need for mutual support.

“She said, ‘Everywhere you go, you have to come back for the rest,’ and so we took that and we said, ‘We have to come back for the rest,’” Regino said. “We are making strides. She’s teaching us and we are teaching others and we are working together to come back for the rest, and that’s what all the women are doing.”



Many of the women remained connected via WhatsApp even after their facilitated Zoom meetups concluded, she said. “It wasn’t our intention that it was going to grow beyond us,” she said. “Now, it’s almost like a standalone entity – that’s how the women see it. They say to each other, ‘I’m a Tertulia,’ so it’s very important.”

Many of the women who participated in the Tertulias project discovered a new sense of engagement and empowerment while experiencing less stress, Page-Reeves said. In 2023, a number of them even helped to co-author a paper for the journal *Women’s Health* to provide their perspective on domestic violence.

In addition to gathering personal testimony from the women, the researchers are also looking for objective evidence of stress reduction. The women provided hair samples that are being analyzed by neuroscientist Elaine Bearer, MD, PhD, Distinguished Professor in the UNM Department of Pathology, to gauge circulating levels of cortisol, a stress hormone.

Meanwhile, Page-Reeves is seeking additional funding to further explore how the Tertulias intervention helps participants. She also wants to test a new interactive method for eliciting feedback participants that allows for more nuanced understanding of their responses.

“We’re probably going to be making the argument that Tertulias works,” she said. “We’re no longer looking at efficacy. We now want to explore how and why it works.” 🍌

# TRIP TO WELLNESS

## Testing Psychedelic Drugs as Treatments for Depression, PTSD and More

By Michael Haederle

**Psychedelic drugs tend to be associated with 1960s counterculture**, but they are attracting renewed attention from physicians and neuroscientists who are studying their potential to help people suffering from an assortment of behavioral health problems.

University of New Mexico Health Sciences researchers are at the forefront of several new studies to evaluate the use of drugs like psilocybin, ketamine and MDMA to treat depression, opioid use disorder, methamphetamine addiction and PTSD.

Two new psilocybin-related studies got underway in 2024, said Larry Leeman, MD, MPH, a professor in the Departments of Family & Community Medicine in the UNM School of Medicine, who also serves as medical director for UNM's Milagro Program.

RECONNECT is a Phase 2 multi-center study of RE104 - a novel compound that's related to psilocybin - for postpartum depression, which affects about 13 percent of new mothers. "The exciting thing about this one is it has the potential to quickly reverse postpartum depression," Leeman said.

Some participants in the double-blind placebo-controlled study receive a one-time injection of the short-acting drug, whose psychedelic effects peak at about 2 1/2 hours, he said.

"It might be useful in cases where a shorter experience might be more useful," Leeman said. While some people

experiencing postpartum depression have a pre-existing mood disorder, many experience it only as an outcome of pregnancy, and might need just one treatment session to recover, he said.

Psilocybin has been shown to have effect on major depression within a few days, which may be particularly beneficial for mothers whose postpartum depression may be affecting maternal-infant bonding. It can only be used for people who are not breastfeeding, however.

RE104 is also being explored for treating patients with life-threatening cancer diagnoses who are experiencing depression and anxiety, he said. Leeman expects UNM will probably participate in that study, starting in 2025.

The other new study, dubbed uAspire, is a Phase 3 randomized, double-blind multicenter project assessing the potential benefits of psilocybin, the active ingredient in so-called "magic mushrooms," for major depressive disorder.

UNM's portion of the study is planned for 15-20 participants, Leeman said. Earlier studies have found that psilocybin trips coupled with therapy can help people rapidly reframe their traumatic memories and alleviate their distress.

The study is designed so that everyone who enters it can eventually receive psilocybin, he said. "This is an issue with randomized controlled trials, especially if you take people that are in emotional



pain,” he said. Study participants who desperately hope a trial medication will alleviate their distress may actually feel worse if they receive an inactive placebo. “It’s like a negative placebo – a nocebo,” Leeman said.

UAspire will follow participants for 54 weeks, randomizing some participants to 25 mg of psilocybin – a moderate-to-high dose – while others will receive a smaller 5 mg dose or an inactive placebo. “In six weeks, you get re-scored for depression, and if you meet the criteria then, without anyone knowing what you got in the randomized portion, you become able to be re-dosed in the open label session for a total of four times in the next year,” he said.

“It’s a really pragmatic trial,” Leeman said. “Even if you do your session and don’t feel like you have the active drug, you know that in six weeks if you’re still depressed you’ll receive the 25 mg psilocybin dose. I think this will minimize the likelihood of their depression worsening if they believe they did not receive psilocybin.”

The new studies join Leeman’s existing research project to study whether therapy coupled with MDMA – better known as “Ecstasy” or “Molly” – can help postpartum mothers with opioid use disorder overcome their

addictions. The hope is that MDMA sessions facilitated by trained therapists will alleviate the PTSD symptoms that often drive illicit drug use, Leeman said.

The studies are carried out at the Interdisciplinary Substance Use and Brain Injury Center (ISUBI), adjacent to Pete & Nancy Domenici Hall on UNM’s North Campus, he said. ISUBI can accommodate overnight stays for MDMA-assisted therapy and day-long stays for other psychedelic therapy studies, enabling studies that require patients be observed for a period following their treatment in a safe, supportive setting.

UNM Health Sciences psychedelic research dates back to the early 1990s, when Rick Strassman, MD, an associate professor in the Department of Psychiatry & Behavioral Sciences, studied the therapeutic potential of psilocybin and DMT – the active ingredient in ayahuasca, Leeman said.

More recently, UNM researchers, including Snehal Bhatt, MD, professor of Psychiatry and chief of the Division of Addictions Psychiatry, played a major role in a widely reported 2022 study reporting that psilocybin-assisted therapy helped people overcome alcohol use disorder.



Larry Leeman, MD, MDH, reflected through a double mirror used to observe subjects at the Interdisciplinary Substance Use And Brain Injury building



Snehal Bhatt, MD, looking out of a conference room window at the Interdisciplinary Substance Use And Brain Injury building

Now, Bhatt is taking part in the KMD (Ketamine for Methamphetamine Dependence) study, a multi-site evaluation of ketamine as a treatment for methamphetamine addiction.

Ketamine is not technically a psychedelic, but an anesthetic whose dissociative properties have sometimes led to its abuse as a recreational drug. However, it has also been found to rapidly alleviate depression symptoms.

The safety and efficacy study, run through the National Institute on Drug Abuse (NIDA) Clinical Trials Network, involves four sites and seeks to enroll 30 participants at each location over two years, Bhatt said.

“Methamphetamine, in particular, is posing a huge public health challenge,” he said. “Here in New Mexico and around the country the rates are just going up.” At the moment there are few effective treatments for methamphetamine addiction, he said, but there is hope that ketamine might be a game-changer.

“Some artificial intelligence algorithms that NIDA used actually showed that ketamine is one of the more promising treatment approaches,” Bhatt said. “One of

the big priorities at NIDA is co-occurring depression, because you do see that a very high proportion of people using methamphetamine have depression.” Some participants will undergo two 40-minute infusions of ketamine per week for three weeks, then one per week in week 4 and week 6. The others will receive similar infusions of an active placebo called midazolam, a sedative and anesthetic. Participants will be followed for 12 weeks and submit urine samples to reveal whether they had used methamphetamine, he said.

“The primary endpoint is looking at reductions in methamphetamine use within weeks 5 and 6 – that maintenance infusion period at the end of the active treatment,” Bhatt said. “We’ll also be tracking meth use all the way up to week 12. That’s part of the secondary outcome, to see if the effects persist or if they wash away.”

Study participants are being recruited from both UNM and community treatment clinics. “We want to make it available to our patients,” he said. “It’s one of those big, all-hands-on-deck outreach efforts to make those connections, and if someone’s interested, really get them enrolled in a timely way.” 🙏

# Tackling the Challenge of Dementia



## Center for Memory & Aging Receives \$21.7 Million Grant to Fund Alzheimer's Disease Research Center

By Michael Haederle

**Despite decades of research, scientists remain puzzled by many aspects of Alzheimer's and other forms of dementia.** What defines and distinguishes the different forms of dementia? What drives the disease process – and what can be done about it?

These questions are top of mind at The University of New Mexico's Center for Memory & Aging, which in Spring 2024 received a five-year \$21.7 million program grant from the National Institutes of Health (NIH) to fund its Alzheimer's Disease Research Center (ADRC).

Funding for the P30 grant through the National Institute on Aging followed a three-year exploratory grant that UNM received as it sought to become one of 35 research universities in the ADRC network, said Gary Rosenberg, MD, professor in the UNM Department of Neurology and founding director of the New Mexico Center for Memory & Aging, who serves as principal investigator on the grant.

The ADRC network was created in 1984 to provide operational support across the U.S. for multidisciplinary research to better investigate the underlying causes of Alzheimer's disease and related dementias and find ways to treat and possibly prevent these diseases.

"The whole point was that no one center was going to get enough information, so they built these centers for collecting behavioral data, imaging data, cerebrospinal

fluid and blood data and pathology data into national repositories," Rosenberg said. "These centers are a major resource for large studies into the cause and prevention of cognitive decline and loss."

Researchers view dementia as a collection of disorders with different causes, with Alzheimer's disease being the most common, he said. UNM researchers are using artificial intelligence techniques to identify key imaging and fluid biomarkers that can distinguish between Alzheimer's disease and vascular dementia, for example.

Alzheimer's disease is characterized in part by an abnormal accumulation of amyloid and other proteins that causes inflammation and hinders brain cell function, while vascular dementia occurs when blood vessels are damaged by high blood pressure, diabetes, sleep apnea and other risk factors. This leads to reduced oxygen in the brain, which can cause small strokes.

"We now realize that most people have a combination of Alzheimer's and vascular dementia," Rosenberg said. "When you have both vascular disease and amyloid protein, the inflammation is much worse. That disrupts the blood vessels, leading to more cascading events."

UNM researchers will study ways to reduce the impact of inflammation on disease progression as part of the new ADRC's mission.

Meanwhile, the NIH has in recent years broadened the scope of biomedical research to include groups that have historically been overlooked in studies, including African Americans, Hispanics and Native Americans.

For the past several years, the Center for Memory & Aging has conducted brain imaging studies at Zuni and Acoma Pueblos in western New Mexico using a portable MRI scanner mounted in a semi-trailer, accompanied by on-site neuropsychological testing by specially trained tribal members.

As part of the new grant funding, the ADRC's Outreach, Recruitment and Engagement Core will focus on recruiting study participants from communities throughout the state in hopes of further reducing the disparities related to access to health research.

Rosenberg believes the scope of UNM's research played a role in the NIH decision to award continued funding to UNM's Alzheimer's center, as did the cutting-edge imaging resources housed at the Mind Research Network, located in Pete and Nancy Domenici Hall on UNM's North Campus.

**"Our emphasis on being able to work with a large, diverse group was probably a factor, as was our forward-looking thinking about how to eventually treat these diseases by calming inflammation."** - Gary Rosenberg, MD

Rosenberg also credited Gov. Michelle Lujan Grisham, New Mexico's Congressional delegation, UNM leadership and faculty and the New Mexico chapter of the Alzheimer's Association for supporting the application for the award, which will involve research faculty and staff from both UNM Health Sciences and Central Campus.

"Obtaining this grant was a major team effort and we are all excited by this opportunity," he said. "These centers have a life of their own once they get going. We've got the snowball built, and now the university and state will have to help us keep it rolling." 🍷



Gary Rosenberg, MD, seen through a window at Pete and Nancy Domenici Hall.

# CONTINUING THE WORK

## UNM's New Mexico Alcohol Research Center Receives Renewed Grant Funding to Study Fetal Alcohol Spectrum Disorder

Fernando Valenzuela, MD, PhD, examines a flask in his University of New Mexico's Health Sciences laboratory.

*By Michael Haederle*

**Fetal Alcohol Spectrum Disorder (FASD) is widespread in New Mexico and across the nation, affecting about one in 20 U.S. school-aged children, according to the Centers for Disease Control and Prevention.**

This condition truly falls along a “spectrum,” with effects ranging from severe intellectual disability to more subtle cognitive and behavioral impairments, but the common denominator is prenatal exposure to alcohol.

Researchers at the New Mexico Alcohol Research Center (NMARC) at The University of New Mexico Health Sciences Center have been studying FASD since 2008 in hopes of better understanding how it affects the brain. In 2024, the center received a five-year, \$7.3 million extension of its National Institutes of Health program grant to support its ongoing research.

“We’re looking at mechanisms responsible for the effects of alcohol on the brain,” said center director C. Fernando Valenzuela, MD, PhD, professor in the Department of Neurosciences in the UNM School of Medicine. “We mainly focus on neurological, behavioral and neuro-psychiatric deficits.”

**It's the most prevalent neurodevelopmental disorder, and in theory, it's completely preventable, Valenzuela said.**

But because many women of reproductive age drink alcohol, and because it can take a month for a woman to know she is pregnant, the developing fetus can receive significant alcohol exposure before the expectant mother has had a chance to alter her consumption.

The grant from the National Institute on Alcohol Abuse and Alcoholism represents the third round of full funding for the center, he said. Researchers affiliated with the center have searched for unique biomarkers to diagnose the condition and evaluated potential therapeutic interventions such as music training, the use of special video games and other exercises thought to enhance cognition.

The next phase will focus on some of the unique deficits experienced by those living with FASD.

“We’re trying to understand how alcohol exposure in utero affects visual spatial memory and cognitive flexibility,” Valenzuela said. “Sometimes, memory is not so good and the ability to learn things related to space and time can be impaired.”

NMARC brings together faculty members from across UNM Health Sciences and the University at large, including the Departments of Pediatrics and Psychiatry & Behavioral Sciences, the College of Pharmacy and the Department of Psychology, he said. It also has a partnership with researchers at the Mind Research Network, who provide critical neuro-imaging support.

NMARC also partners with the UNM Center for Development & Disability (CDD) in the Department of Pediatrics, Valenzuela said. Because CDD provides important clinical care for children and adolescents with developmental disorders, it serves as an important pathway for recruiting participants in neuroimaging studies and helps to inform research priorities.

“The human work is informing our laboratory studies,” he said. “That’s the strength of the center. They tell us, ‘Look, this is what we’re seeing in the clinic. These are the problems we are facing.’ Then we focus and try to research on that.”

Valenzuela emphasizes that individuals with FASD have many strengths.

“The field is shifting in recognizing that,” he said. “They have tremendous abilities that we can foster and facilitate and enrich. The reason we are shifting is because we are getting more and more people with FASD at the table with us, working in advisory meetings.”

NMARC is also an important resource for the University and New Mexico as a whole, he said, because it generates employment for scientists, research technicians and students and provides important training opportunities, he said.

“I’m very excited for the field and what we can contribute to help with this condition,” Valenzuela said. “I’m also excited to be working with this talented group of scientists and trainees to do something really good that for the field.” 🗨️

# INVENTIVE FACULTY

## Health Sciences Researchers Make Their Mark as UNM Rainforest Innovation Fellows

**The University of New Mexico Rainforest Innovations board of directors established the annual Rainforest Innovation Fellows Award to honor UNM inventors whose work has led to commercialization activities.**

UNM Health Sciences researchers have been well represented since the award was created in 2010.

The Rainforest Innovation Fellow Award recognizes the impact of new technologies resulting in substantial

benefit to the public. A review committee selects Innovation Fellows based on new technologies disclosed, patents received, license and option agreements entered into, new companies started and income generated from these technologies. The award includes an honorarium of \$2,500, a booklet outlining a summary of the metrics and impact of the awardee's technologies and a commemorative gift.

### The UNM Health Sciences Rainforest Innovations Fellows include:



**Karin Westlund High '23, PhD**  
Professor and Vice Chair for Research

Department of Anesthesiology & Critical Care Medicine  
School of Medicine

Karin Westlund High's research focuses on finding non-opioid therapeutics to relieve chronic pain. She is among the earliest members of the American Pain Society, the U.S. chapter of the International Association for the Study of Pain (IASP), which is dedicated to advancing multidisciplinary pain care, education, advocacy and research to improve people's quality of life. She has served as associate editor for the Pharmacology section of Pain, the IASP professional journal, and in 2008 she won the IASP's Fred Kerr Career Research Award. She received her PhD in physiology and biophysics from the University of Texas Medical Branch at Galveston. She is a distinguished professor and the Vice Chair for Research in the Department of Anesthesiology & Critical Care Medicine at the UNM School of Medicine, and is a Research Physiologist at the New Mexico Veterans Affairs Health

Care System in Albuquerque. Her lab has patented two non-opioid small single chain antibodies that significantly inhibit targets upregulated in chronic neuropathic pain. A single dose of one antibody returns pain- anxiety- and depression-like behaviors to baseline. The project has received National Institutes of Health, Department of Defense and VA Merit grant funding. Her previous studies have been continuously funded and appear in 182 published manuscripts, cited 11,645 times. Live cell calcium and ROS imaging, neurochemical, gene therapy, molecular, pharmacological, electrophysiological, fMRI, behavioral, immunocytochemical, cell culture and neuropathological approaches are utilized. Major findings include shared discovery of previously unknown visceral pain pathways with collaborating neurosurgeons, feed-forward neurogenic loops ("vicious cycles") induced in peripheral sensory nerves and the spinal cord that amplify both inflammation and pain, and switch from inhibition to facilitation of pain- and anxiety-related behaviors during the transition from acute to chronic pain states. She has provided numerous contributions to the education of graduate, medical and dental students, primarily through medical and dental neuroscience courses.



**Eric Prossnitz '21, PhD**  
Distinguished Professor and Chief,  
Division of Molecular Medicine  
Department of Internal Medicine  
School of Medicine

Eric Prossnitz and his team have identified new drugs that are currently in clinical trials for cancer patients. After centering his early studies of chemotactic immune receptor function, he shifted his research focus to understanding the actions of estrogen through a novel target, G protein-coupled estrogen receptors (GPCR), a large group of evolutionarily related cell surface proteins that detect molecules outside the cell and activate cellular responses. More than 125 GPCRs are targets for FDA-approved drugs, serving as the target for about 700 approved drugs. His studies have led to the first clinical trial of a UNM-developed drug conducted at the UNM Comprehensive Cancer Center. He has received continuous NIH funding since 1994, for a total of more than \$50 million in funding at UNM as

PI or Co-PI. He has authored more than 220 peer-reviewed articles and reviews, with more than 22,000 citations. His research has led to the disclosure of 18 technologies at UNM Rainforest Innovations, eight U.S. issued patents and three pending patents. Prossnitz received his PhD in biochemistry from the University of California, Berkeley, in 1989, and carried out postdoctoral training at the Scripps Clinic and Research Institute, where he received his first faculty appointment in 1994. In 1997 Prossnitz was recruited to the UNM Department of Cell Biology & Physiology, and in 2015 the Department of Internal Medicine. He has been a program leader at the UNM Cancer Center since 2008, a module lead in the UNM Clinical & Translational Science Center since 2010 and Chief of the Division of Molecular Medicine since 2018. He has also led components of the New Mexico INBRE and Mountain West Clinical & Translational Research Infrastructure Network, and is the academic lead for the ASCEND Accelerator Hub that promotes entrepreneurship and commercialization of university basic and translational science for the seven Western IDeA states.



**Angela Wandinger-Ness '19, PhD**  
Professor Emerita  
Department of Pathology  
School of Medicine

Angela Wandinger-Ness has elucidated the mechanisms underlying autosomal dominant polycystic kidney disease and relationships to oral-cranio-facial disease. She also developed strategies for kidney regeneration through the use of stem cells and decellularized scaffolds. She has studied enzymes called GTPases - molecular switches that regulate how cells break down, organize, move around and attach to one another. Mutated Ras proteins are the key targets in cancer therapeutics development, because they are implicated in more than 30% of human cancers. In addition, other small GTPases in the Ras superfamily, such as Rac and Rho subfamilies, play a role in cancer progression and metastasis. Rac1, an oncoprotein that mutates and dysregulates in many cancers, is associated with poor prognosis and drug resistance in ovarian, breast, colon and other cancers. Wandinger-Ness and her team

discovered that a component of the non-steroidal anti-inflammatory drug ketorolac acts on GTPases in ovarian cancer cells to keep the cells from growing and spreading. Wandinger-Ness found it conferred a huge survival benefit for ovarian cancer patients who were given ketorolac for pain after surgery. One component of the drug, S-ketorolac, is the pain reliever; the other component, R-ketorolac, acts as an anti-cancer drug. Wandinger-Ness established R-ketorolac as a Rac1 and Cdc42 (a Rho GTPase) inhibitor and showed their therapeutic benefits for ovarian cancer patients. She joined the UNM Department of Pathology faculty in 1999 and holds numerous awards for teaching and research. She has authored more than 90 peer-reviewed articles and reviews and has disclosed 19 technologies and received six U.S. issued. Her laboratory has been extramurally funded since 1993 through NIH, National Science Foundation and a variety of private foundations, totaling 39 grants as PI and \$23 million dollars in direct costs. She is the recipient of a Women in Technology Award and is a five-time STC Innovation Awardee.



**Bryce Chackerian '17, PhD**  
Regents' Professor &  
Jeffrey Michael Gorvetzian  
Endowed Professor  
Department of Molecular Genetics  
& Microbiology  
School of Medicine

As a postdoctoral fellow studying virology and immunology at the National Cancer Institute Bryce Chackerian studied virus-like particles (VLPs) as vehicles for developing vaccines. The idea was to essentially fool the immune system into thinking that it was experiencing a viral infection and so generate large amounts of antibodies to self-peptides displayed on the virus surface. In 2004, Chackerian joined the UNM Department of Molecular Genetics & Microbiology, where his laboratory focuses on using VLPs for vaccine development. He works closely with David Peabody, an expert in the structure and function of bacterial viruses, to construct VLPs from RNA bacteriophages (viruses that infect bacteria). VLPs are nanostructures that lack the viral genetic material necessary for infection, but they retain their external structure for repetitive, high-density antigen display that mimic the organization

of native viruses but are unable to replicate. There are many places on the structure where the antigen or antibody can attach. VLPs can be grown in large amounts and have a naturally encapsidated single-stranded RNA. The genetic material of the antigen is inserted into the VLP and displayed on its surface. Using bacteriophage MS2 VLPs, the inventors can display specific epitopes on their surface and test for an immune response. They have created very large, diverse libraries of VLPs that display random peptide (small antigen) sequences. With a suitable immune response, the VLP becomes the vaccine. Using this flexible platform with an expanding number of available monoclonal antibodies, Chackerian has identified VLPs that induce neutralizing antibodies against pathogens, such as human papillomavirus; Nipah virus; blood-stage malaria; Staphylococcus aureus (including the antibiotic-resistant MRSA strain) and respiratory syncytial virus. They have also engineered vaccines targeting LDL cholesterol and triglycerides associated with heart disease and tau proteins associated with Alzheimer's disease and traumatic brain injuries.



**David Peabody '17, PhD**  
Professor  
Department of Molecular Genetics  
& Microbiology  
School of Medicine

David Peabody is a world-renowned expert in the structure and function of bacterial viruses.

At UNM, he has partnered with Bryce Chackerian in the development of vaccines using virus-like particles (VLPs). As a postdoctoral fellow studying biochemistry at the Stanford University Medical School, Peabody focused on gene regulation in mammalian cells and artificially constructed recombinants. He then turned to analyzing the genetic and biochemical relationship between coat protein structure and its ability to specifically recognize RNA as a model for virus assembly. Peabody joined the UNM's Department of Molecular Genetics & Microbiology in 1984. He showed that it is possible to fuse two polypeptide chains of the MS2 viral coat protein. This molecule functions in

the phage lifecycle as a non-covalent dimer, but he showed it would work successfully if the dimer is made of conjoined monomers. He went on to use the fused dimer system to interrogate the coat protein-genomic RNA interaction. RNA phages depend on multiple coat protein dimer-genomic RNA contacts - termed the packaging signal-mediated assembly. The highest affinity-packaging signal is a piece of RNA that forms a structure known as a stem-loop that binds across both monomers of a coat protein dimer. By mutating one-half of his fused dimer at a time, Peabody define the RNA binding sites in each half of the dimer. He then showed that genetic dimerization of the coat protein allowed him to insert foreign peptide epitopes into the three-dimensional structure of the protein so that it did not prevent assembly into VLPs. He later showed that MS2 assembled with the fused coat protein dimer could be used for peptide display - a landmark achievement in the field for single-stranded RNA viruses. This worked helped set the stage for his collaboration with Chackerian to develop VLP-based vaccines for a host of diseases and chronic health conditions.



**Cheryl Willman '15, MD**  
Distinguished Professor  
Departments of Pathology  
& Internal Medicine  
School of Medicine

Cheryl Willman is a cancer biologist who since 2021 has served as executive director

of Mayo Clinic Cancer Programs at the Mayo Clinic Comprehensive Cancer Center while retaining her faculty affiliation with UNM. Willman trained as a pathologist at the Mayo Medical School and completed her internship, residency and fellowship at UNM, joining the School of Medicine faculty in 1982. She was appointed director and CEO of the UNM Cancer Center in November 1999. Under her stewardship, the Cancer Center was awarded a five-year National Cancer Institute P20 Cancer Center Planning Grant in 2000. Five years later, the Center succeeded on its first attempt at NCI Designation and was awarded an NCI P30 CCSG grant. The Center underwent a highly successful competitive renewal in 2010 and has gone on to receive Comprehensive designation. Her UNM

research group focused mainly on characterizing and targeting therapies for leukemia by looking at gene expression patterns and underlying genetic events. Willman's lab studied Hispanic and Native American children with acute lymphoblastic leukemia (ALL) who have a very poor response to standard therapies and low survival rates (30 to 50 percent). Using next-generation genetic sequencing to identify active genes in cancer cells, the researchers discovered that these children have a particular form of leukemia called Philadelphia-like (Ph-like) ALL, caused by a genetic mutation (also affecting adult ALL patients) that non-Hispanic and non-Native American children do not have. Several new therapeutic targets and diagnostics resulted from this research that have been tested in clinical trials and led to several patents and pending patents. The UNM Cancer Center, which received FDA approval for a novel diagnostic in a national study of 4,000 leukemia patients, is using genetic sequencing to search for the mutations associated with Ph-like ALL that can be targeted by existing cancer drugs that are effective against these mutations, leading to new clinical trials.



**Graham Timmins '13, PhD**  
Associate Professor  
Department of  
Pharmaceutical Sciences  
College of Pharmacy

Graham Timmins is an expert is in medicinal chemistry, a multidisciplinary science that

combines synthetic organic chemistry, pharmacology and other biological specialties to design and develop drugs to treat disease. His research focuses on using stable isotope-labeled compounds to develop new drugs and diagnostics and to study free radical biology in melanoma and infectious disease. He has developed innovative breath-test technologies to diagnose and monitor cystic fibrosis, ventilator-associated pneumonia and tuberculosis infections. Test results are available within 10 minutes of inhaling a tracer compound (urea) made from a non-radioactive carbon isotope. The pathogen breaks down the urea into carbon dioxide, which can be detected in the patient's exhaled breath.

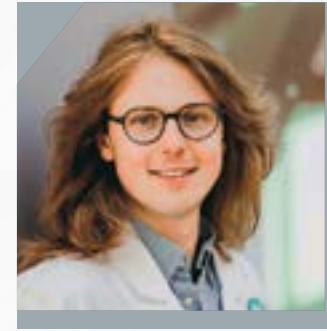
The breath test samples the entire lung non-invasively and can rapidly diagnose in cystic fibrosis patients the onset of first infection by chronic P. aeruginosa and monitor its conversion to a mucoid, drug-resistant strain. Rapid diagnosis is critical to delaying the conversion of P. aeruginosa to its mucoid strain, because conversion leads to the lung damage that causes progressive disability and a shortened life span for these patients. Timmins has also developed technologies that improve the efficacy of isoniazid, an antibiotic that has been used to treat active and drug-resistant strains of tuberculosis since 1952. He discovered that the drug can be rendered more potent against the pathogen by using its isotopically labeled derivatives in combination with a low strength magnetic field. Timmins has also explored the hypothesis that that ultraviolet A (UVA) - the tanning rays in sunlight - is likely a major cause of melanoma, as opposed to UVB light, which causes sunburn. He has made significant contributions to the field using electron paramagnetic resonance spectrometry to explore how UV light affects melanin (skin pigment) and leads to the formation of melanoma.



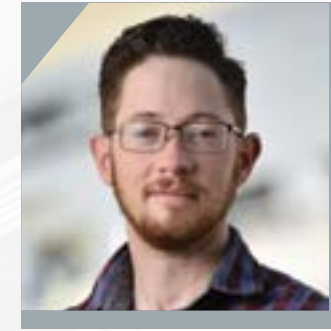
**Larry Sklar '11, PhD**  
Distinguished Professor Emeritus  
Department of Pathology  
School of Medicine

Larry Sklar was honored for his work as an innovator at the UNM Health Sciences Center. During his time at UNM he disclosed more than 50 technologies, received 19 patents and copyrights, had his technologies licensed to 11 companies and had two startup companies created around his inventions, including Intellicyt Corp., an Albuquerque company that sells his HyperCyt® platform technology for flow cytometers. As head of the New Mexico Molecular Screening Center, he worked to transform flow cytometry technology into the benchmark for high throughput flow cytometry. Flow cytometers measure cell fluorescence as cells in a sample flow very rapidly in single file through a laser beam that excites fluorescent probes attached to the cells. Flow cytometers can analyze 50,000-70,000 cells per second and the fluorescence on 16 probes

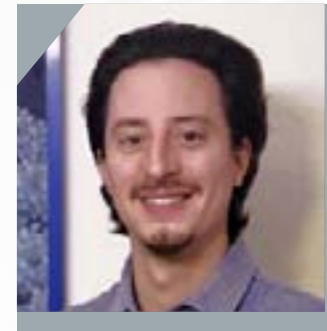
per cell. But traditional flow cytometers can't measure multiple collections of cells rapidly. The HyperCyt® platform speeds up the process of analyzing multiple cell collections. The platform technology also increases a cytometer's ability to look at multiple targets on cells simultaneously. Researchers in the group studied how transporter molecules in cancer cells protect those cells from chemotherapy drugs, and how a similar process centered around quorum sensing in a strain of Staphylococcus bacterium makes it resistant to antibiotics. Researchers test molecules in the Center's molecular library to find compounds that can be used to solve these biological conundrums. Future applications of the HyperCyt® technology could lead to a quick and effective way to find a compound that will either enhance the effect of chemotherapy drugs on cancer cells or act as an effective agent itself for patients whose cancers are drug resistant. Sklar's lab collaborated with the other eight national NIH-funded molecular-screening centers around the nation as well as with scientists and engineers from Los Alamos National Laboratory, Sandia National Laboratories and internationally.



**Ian Marshall Adams, PhD Candidate**  
Anesthesiology & Critical Care Medicine  
T32 Scholar, NIGMS  
*Cell biology, cell signaling, cellular and molecular oncology.*  
Mentor: Diane Lidke, PhD



**Jacob Anderson, PhD**  
Cell Biology & Physiology  
T32 Scholar, NHLBI  
*Investigating the role of endothelial membrane cholesterol in regulating vascular activity.*  
Mentor: Jay Naik, PhD



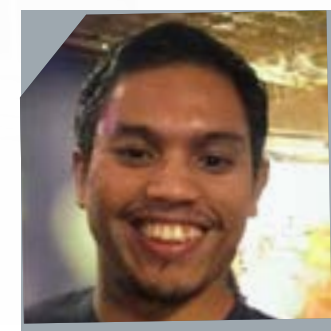
**David Arredondo, PhD**  
Internal Medicine  
Postdoctoral Fellow, ASERT, NIGMS  
*Leveraging artificial intelligence to predict gene mutation and drug interactions for advancing precision medicine deleterious consequences.*  
Mentors: Avinash Sahu, PhD; Kimberly Leslie, MD; Jim Niforatos, PhD



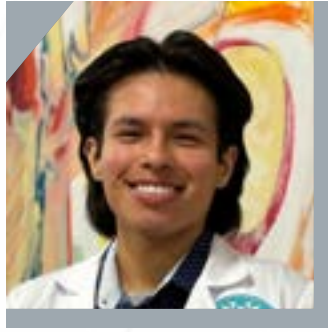
**Michael C. Bennett, PhD Candidate**  
Neurosciences  
F31 Scholar, NINDS  
*Exploring the contribution of alternative, non-NMDAR mediated mechanisms of delayed synaptic recovery following spreading depolarizations and identifying potential pharmacological interventions.*  
Mentor: C. William Shuttleworth, PhD



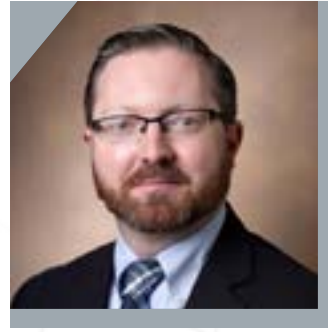
**Alissa Cabada-Gomez, MD/PhD Candidate**  
Neurosciences  
T32 Scholar, NHLBI  
*Investigating deleterious consequences following spreading depolarization in related context of ischemic brain injury and stroke.*  
Mentor: C. William Shuttleworth, PhD



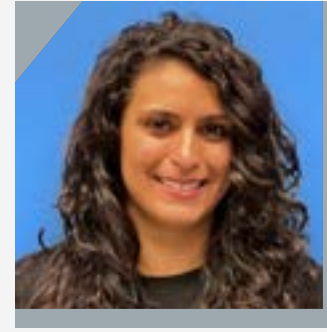
**Christian Cabanlong, PhD**  
Biochemistry & Molecular Biology  
Postdoctoral Fellow, ASERT, NIGMS  
*Elucidating the genes involved in iron-dependent cell death that may serve as targets in the treatment of colorectal cancer.*  
Mentors: Sarah Blossom, PhD; Xiang Xue, PhD; Angela Wandinger-Ness, PhD; Jim Niforatos, PhD



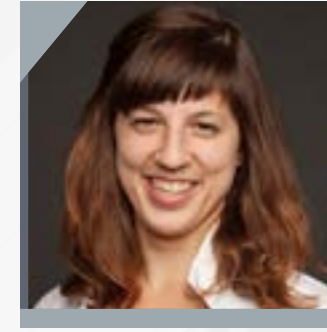
**Matthew Cabrales, PhD Candidate**  
Molecular Genetics & Microbiology  
T32 Scholar, NIGMS  
*Infectious disease, therapeutic discovery, cancer biology.*  
Mentor: Michelle Ozburn, PhD



**Ross Clark, MD, MBA**  
Surgery  
KL2 Scholar, NCATS  
*Wound healing and angiogenesis in diabetes and obesity. Hydrogen sulfide biology and signaling in angiogenesis. Microplastics in vascular lesions.*  
Mentors: James Chodosh, MD; Nancy Kanagy, PhD



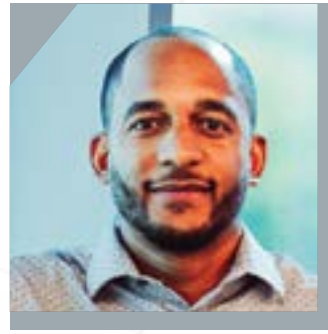
**Selina Garcia, PhD**  
Cell Biology & Physiology  
T32 Scholar, NHLBI  
*Cardiovascular physiology*  
Mentors: Laura Gonzalez Bosc, PhD, and Nikki Jernigan, PhD



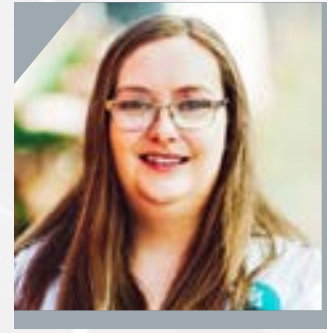
**Naomi George, MD, MPH**  
Emergency Medicine  
KL2 Scholar, NCATS  
*Adapting and testing social care interventions for the ICU and identifying promising implementation strategies for future effectiveness-implementation testing.*  
Mentors: Larissa Myaskovsky PhD; Mark Unruh MD; Janet Page-Reeves PhD



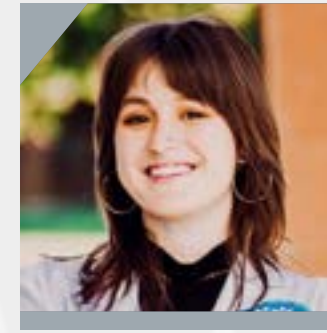
**Andrea Corbet, PhD**  
Internal Medicine  
Postdoctoral Fellow, NIGMS  
*Assessing the impact of estrogen signaling on the activity of the innate immune response protein STING in ovarian cancer.*  
Mentors: Sarah Adams, MD; Eric Prossnitz, PhD



**Xavier A. DeLeon, PhD Candidate**  
Cell Biology & Physiology  
T32 Scholar, NIGMS  
*Determining the contribution of ASIC1a to the age- and sex-related development of cardiometabolic disease.*  
Mentor: Nikki Jernigan, PhD



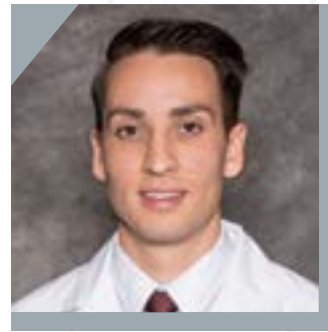
**Baley Goodson, PhD Candidate**  
Molecular Genetics & Microbiology  
T32 Scholar, NIGMS  
*Mechanisms of lysosomal BMP alterations in SARS-CoV2 infection.*  
Mentor: Jing Pu, PhD



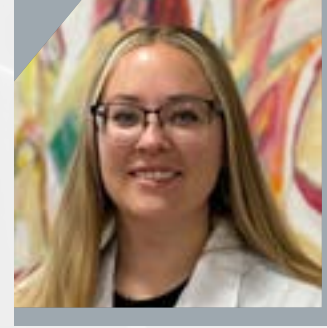
**Devon Hatcher, PhD Candidate**  
Neurosciences  
T32 Scholar, NIGMS  
*Spreading depolarizations and mild traumatic brain injuries*  
Mentors: Nancy Kanagy, PhD; Russell A. Morton, PhD



**Alexandra Francian, PhD**  
Molecular Genetics & Microbiology  
Postdoctoral Fellow, ASERT, NIGMS  
*Developing vaccines for malaria and mosquito-borne viruses using virus-like particle vaccine platforms.*  
Mentor: Bryce C. Chackerian, PhD



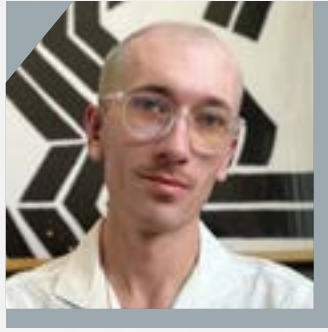
**Marcus Garcia, PharmD, RPh**  
Pharmaceutical Sciences  
Postdoctoral Fellow, ASERT, NIGMS  
*Elucidating the health impacts of environmental contaminants, in particular, microplastics and heavy metals, that are present human tissues.*  
Mentors: Eliseo F. Castillo, PhD; Matthew Campen, PhD, Terri Koontz, MS



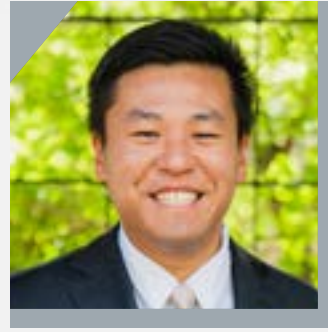
**Brandi R. Hess, PhD Candidate**  
Neurosciences  
T32 Scholar, NIGMS  
*Neuroimmune dysfunction and metabolic fluctuations as it relates to mTBI-induced spreading depolarizations characterized by cortical network dysfunction using in-vivo electrophysiology.*  
Mentor: Russell A. Morton, PhD



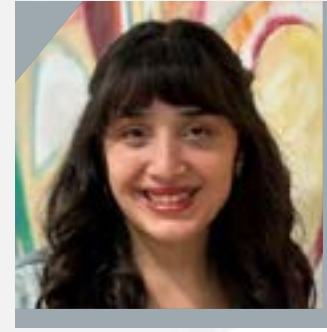
**Andzoa Jamus, PhD Candidate**  
Molecular Genetics & Microbiology  
T32 Scholar, NIAID  
*Development and optimization of bacteriophage virus-like particle vaccines against Infectious and non-infectious pathogens.*  
Mentor: Kathryn Fietze, PhD



**David Jones, PhD Candidate**  
Anesthesiology & Critical Care Medicine  
T32 Scholar, NIGMS  
*Plasma membrane cholesterol regulation of the L-type transport protein Lat1 and DRG sensory neuron excitability in chronic neuropathic pain.*  
Mentor: Sascha Alles, PhD



**Randy Ko, MD/PhD Candidate**  
Internal Medicine  
F31 Scholar, NIDDK  
*Studying molecular mechanisms of estrogen signaling through the G protein-coupled estrogen receptor and the role this receptor plays in obesity, lipid metabolism and wound healing.*  
Mentors: Eric Prossnitz, PhD; Meilian Liu, PhD



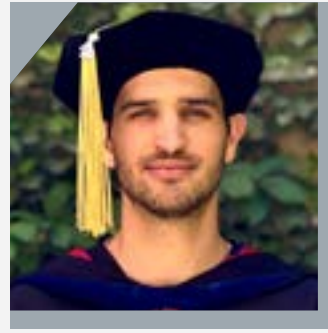
**Brianna Maes, PhD Candidate**  
Internal Medicine  
T32 Scholar, NIGMS  
*Microbiology and infectious diseases*  
Mentor: Eliseo Castillo, PhD



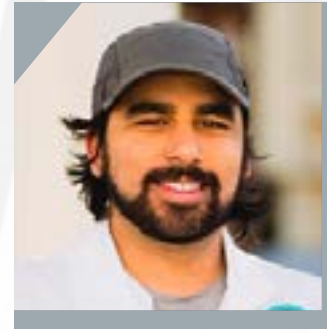
**Caitlin McPherson, PhD**  
Pathology  
Postdoctoral Fellow, ASERT, NIGMS  
*Utilizing bio-archaeological methodology to examine the relationship between stress events and impacts on growth, disease susceptibility and mortality risk across the lifespan.*  
Mentors: Heather Edgar, PhD; Lexi O'Donnell, PhD; Christine Woods, PhD; Todd Nims, MS



**Jamie Krashin, MD, MSCR**  
Obstetrics & Gynecology  
KL2 Scholar, NCATS  
*Understanding and addressing disparities in early pregnancy complications in rural New Mexico.*  
Mentors: Larissa Myaskovsky, PhD; Cathleen Willging, PhD; Yuko Komesu, MD



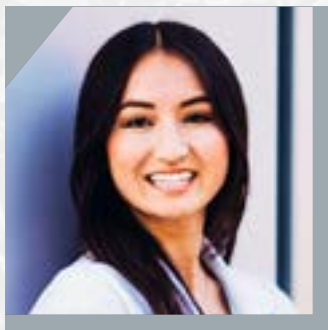
**Benjamin Lantz, PhD Candidate**  
Cell Biology & Physiology  
T32 Scholar, NHLBI  
*T regulatory-T helper 17 cell balance in chronic hypoxia-induced pulmonary hypertension.*  
Mentor: Laura Gonzalez Bosc, PhD



**Jorge Moreno, PhD Candidate**  
Pharmaceutical Sciences  
T32 Scholar, NIGMS  
*Investigating mechanisms of autoimmune development after exposure to heavy-metal rich mine dust in populations living adjacent to abandoned uranium mines.*  
Mentor: Alicia Bolt, PhD



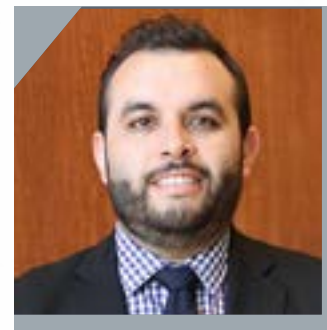
**Kimberly Morrissey, PhD**  
Molecular Genetics & Microbiology  
Postdoctoral Fellow, ASERT, NIGMS  
*T cell responses related to their mobility and metabolism in the context of infection.*  
Mentors: Judy Cannon, PhD; Bryce C. Chackerian, PhD; Heather Simpson, PhD



**Angela Littlefield, PhD Candidate**  
Pathology  
T32 Scholar, NIGMS  
*Cancer biology; cell signaling; biophysics; membrane receptor.*  
Mentor: Diane Lidke, PhD



**Monica Long, PhD Candidate**  
Cell Biology & Physiology  
T32 Scholar, NHLBI  
*Studying brain microvascular endothelial cell permeability and angiogenesis in a 3D model of the neurovascular unit.*  
Mentor: Amy Gardiner, PhD



**Roberto Mota Alvidrez, MD, MS**  
Pharmaceutical Sciences  
**KL2 Scholar, NCATS**  
*Studying the mechanistic response elements of HMGB1 regulation of Type 2 diabetes-related hyperglycemia; advancing knowledge of HMGB1 as a therapeutic target in hyperglycemia related to insulin resistance.*  
Mentors: Barry Bleske, PharmD; Jaya Rajaiya, PhD



**Madison Otero, PhD Candidate**  
Neurosciences  
T32 Scholar, NIGMS  
*Genetics and data science*  
Mentor: Amy Gardiner, PhD

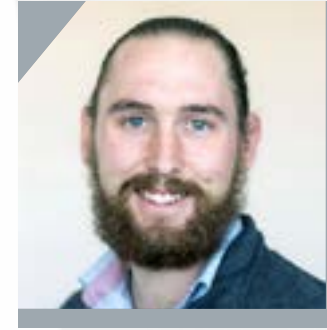




**Erica Pascetti, PhD Candidate**  
 Pathology  
 T32 Scholar, NHLBI  
*Hematopoietic stem and progenitor cells*  
 Mentor: Jennifer Gillette, PhD



**Sumira Phatak, PhD**  
 Pharmaceutical Sciences  
 Postdoctoral Fellow, ASERT, NIGMS  
*Understanding the biological impact of common environmental insults, including gestational ozone exposure, ingested plastics and wildfire smoke, on health and aging.*  
 Mentors: Matthew Campen, PhD; Shahani Noor, PhD, Julie In, PhD, Avis James PhD; Todd Nims, MS



**Taylor W. Uselman, PhD Candidate**  
 Pathology  
 F99/K00 Scholar, NINDS  
*Development and deployment of neuroimaging and neuromodulation technologies combined with advanced analytical techniques to both map and modulate brain states in health and disease.*  
 Mentor: Elaine L. Bearer, MD, PhD



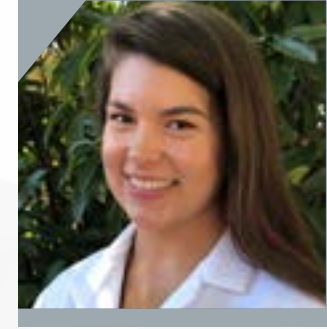
**Miriam Vélez-Bermúdez, PhD, MPH**  
 Internal Medicine  
 T32 Scholar, NHLBI  
*Addressing health equity and psychosocial issues across the kidney care continuum among patients with kidney disease.*  
 Mentor: Larissa Myaskovsky, PhD



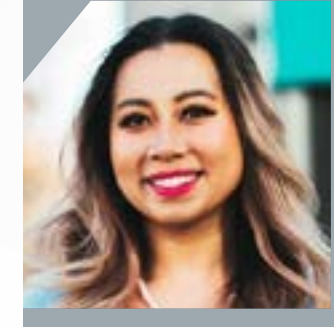
**Jaclyn A. Rivas, PhD Candidate**  
 Internal Medicine  
 T32 Scholar, NIGMS  
*The pathogenic role of the colonic epithelium in the etiology of metabolic diseases*  
 Mentor: Eliseo F. Castillo, PhD



**Jay Salinas, PhD Candidate**  
 Internal Medicine  
 T32 Scholar, NIGMS  
*Cellular and molecular biology, immunology, virology, cancer biology.*  
 Mentor: Jingyue Cassano, PhD



**Jordan Weisend, PhD**  
 Neurosciences  
 T32 Scholar, NHLBI  
*Mechanisms of injury and adaptive plasticity of neuronal tissue following spreading depolarization.*  
 Mentor: C. William Shuttleworth, PhD



**Gaokhia Yang, PhD Candidate**  
 Neurosciences  
 T32 Scholar, NIGMS  
*Neurosciences, with a focus on synaptic plasticity in learning and memory*  
 Mentor: Samuel McKenzie, PhD



**Andrew Skidmore, PhD**  
 Internal Medicine  
 Postdoctoral Fellow, ASERT, NIGMS  
*Elucidating whether the deer mouse microbiome could influence the transmission of Sin Nombre hantavirus virus to humans. Surveillance of hantaviruses and other viruses in wild rodents.*  
 Mentors: Steven Bradfute, PhD; Joseph Cook, PhD; Todd Nims, MS



**Megan Tuineau, PhD Candidate**  
 Cell Biology & Physiology  
 T32 Scholar, NHLBI  
*Determining the mechanisms and effects of altered subcellular localization of acid-sensing ion channel 1a in pulmonary arterial smooth muscle cells from rodent models of chronic hypoxia-induced pulmonary hypertension.*  
 Mentor: Nikki Jernigan, PhD



**Sydnee Yazzie, PhD Candidate**  
 Nursing  
 T32 Scholar NIGMS  
*Systemic inflammatory responses to woodsmoke exposure and possible role of ovarian hormones in mediating responses.*  
 Mentor: Katherine Zychowski, PhD

## EXCELLENCE IN RESEARCH AWARDS 2024

Six University of New Mexico Health Sciences faculty members were honored on Nov. 5, 2024, with UNM's 16th annual Excellence in Research Awards.

The scientists received the awards in a ceremony held at the Domenici Center for Health Sciences Education. Each was nominated by their peers, said Hengameh Raissy, PharmD, Interim Vice President for Research, Health Sciences.

"These awards highlight the crucial role of research in advancing science and nurturing the next generation of scientists," Raissy said. "They enable us to honor individuals across the entire research spectrum, from basic and pre-clinical studies to clinical trials, population science and implementation."

The awards were presented in six categories.



### Chuck Wiggins, PhD

Internal Medicine, *Population Science*

Chuck Wiggins, PhD, a tenured professor in the Division of Epidemiology, Biostatistics & Preventive Medicine in the Department of Internal Medicine, received the Population Science Research award. Over more than 40 years, he has developed a strong record of advancing knowledge in cancer epidemiology, particularly among New Mexico's Hispanic and American Indian populations. He is a key resource for the UNM Comprehensive Cancer Center and groups focused on cancer registries and cancer epidemiology.



### Nancy Kanagy, PhD

Cell Biology & Physiology, *Team Science*

Nancy Kanagy, PhD, professor and chair of the Department of Cell Biology & Physiology, received the Team Science award. Her work focuses on the role of endogenous hydrogen sulfide (H<sub>2</sub>S) in endothelial cell signaling in health and disease. Her team discovered the novel pathway by which H<sub>2</sub>S causes vascular dilation through autocrine actions in the endothelium by activating TRPV4 channels linked to a poorly understood pathway of endothelial large conductance-Ca<sup>2+</sup> activated potassium channels (BKCa).



### Changjian (Jim) Feng, PhD

College of Pharmacy, *Basic Science*

Changjian (Jim) Feng, PhD, professor and assistant dean for Research in the College of Pharmacy, received the Basic Science Research award. He studies the biophysical mechanisms underlying the function of nitric oxide synthase, a major protein in cardiovascular and neurological disease research. He aims to develop a collective knowledge of multidomain proteins by applying novel biophysical and computational tools to decipher fundamental principles underlying many reactions catalyzed by these enzymes.



### Ursa Brown-Glaberman, MD

Internal Medicine, *Clinical Science*

Ursa Brown-Glaberman, MD, an associate professor and vice chief for Faculty Development in the Division of Hematology/Oncology, Department of Internal Medicine, received the Clinical Science award. She provides clinical care to breast and gastrointestinal cancer patients and cancer genomic sequencing for American Indian patients, leading to greater access to clinical trial and research. Since joining UNM in 2013, she has accrued 725 individual patients to clinical trials, including 431 to NCI-funded NCTN trials.



### Donald Godwin, PhD

College of Pharmacy, *Scholarship of Teaching and Learning*

Donald Godwin, PhD, professor and dean of the UNM College of Pharmacy, received the Scholarship of Teaching and Learning award. His extensive contributions to educational scholarship reflect a lasting commitment to improving teaching and learning in pharmacy education. He has been instrumental in the development and implementation of noteworthy educational programs. He spearheaded the "Diversifying the Healthcare Pipeline" project, which focuses on increasing awareness, recruitment and retention of diverse student populations in the pharmacy profession.



### Alison Kell, PhD

Molecular Genetics & Microbiology, *Junior Faculty*

Alison Kell, PhD, assistant professor in the Department of Molecular Genetics & Microbiology, received the Junior Faculty Research award. She studies the molecular interactions driving hantavirus pathogenesis in humans, investigating the virus-host interactions in human and reservoir host cells associated with innate immune activation, endothelial cell dysfunction and vascular inflammation. She has demonstrated that hantavirus infection within the natural rodent reservoir host does not elicit innate immune activation, in contrast to hantavirus infections in humans.

**University of New Mexico Health Sciences** research centers and institutes play a prominent role in many critical national networks. We thank the directors, faculty, staff and students who enrich the work of these groups. These entities include a range of research cores and shared facilities. Here's an overview:

**Extramurally Funded Centers & Institutes**

- UNM Clinical & Translational Science Center (NIH, ULTR001449, Pandhi/Campen)
- UNM Comprehensive Cancer Center (NIH, P30CA118100, Sanchez)
- The New Mexico Integrative Science Program Incorporating Research in Environmental Sciences Center (NM-INSPIRES) (NIH, P30ES032755, Blossom)
- Autophagy, Inflammation & Metabolism Center (NIH/COBRE, P20GM121176, Deretic)
- Center for Brain Recovery & Repair (NIH/COBRE, P20GM109089, Shuttleworth)
- New Mexico Alcohol Research Center (NIH, P50AA022534, Valenzuela)
- Transdisciplinary Research, Engagement & Equity Center for Advancing Behavioral Health (NIH, U54MD004811, Cacari-Stone/Cruz/Verney)
- Center for Metals in Biology & Medicine (NIH/COBRE, P20GM120422, Campen)
- Center for Native American Environmental Health Equity Research (NIH P50MD015706, MacKenzie/Hoover/Lewis)
- Metal Exposure Toxicity Assessment on Tribal Lands in the Southwest Superfund Research Center (NIH P42ES025589, Cerrato)
- New Mexico Alzheimer's Disease Research Center (NIH P30AG086404, Rosenberg)
- Center for Development & Disability (various sponsors, Moriarta)
- Understanding Risk Gradients from Environment of Native American Child Health Trajectories: Toxicants, Immunomodulation, Metabolic Syndromes, & Metal Exposure (NIH, UG3OD023344, MacKenzie/Lewis)
- HEALTHy Brain and Child Development National Consortium (NIH, U01DA055359, Bakhireva/Leeman)
- Surveillance Epidemiology & End Results Program (NCI/SEER, 261201800141, Wiggins)
- Prevention Research Center (CDC, U48DP006379, Davis)
- IDEA State Pediatric Clinical Trials Network (NIH, UG1OD024947-03, Raissy/Kong)
- Project ECHO (various sponsors, Arora)

- NIDA Clinical Trials Network, Southwest Node (NIH, UG1DA049468, Page)
- Knowledge Management Center for Illuminating the Druggable Genome (NIH, U24CA224370, Edwards)
- Community Oncology Research Program (NCORP) Minority/Underserved Community Sites (NIH, UG1CA189856, Muller)
- Eunice Kennedy Shriver NICHD Cooperative Multicenter Neonatal Research Network (NIH, UG1HD053089, Fuller)
- Southwestern Stroke Alliance Regional Coordinating Center (U24NS135280, Girotra/Torbey)
- Advancing Clinical Research in Ovarian Cancer (DOD, HT9425-24-1-0547, Adams)

**Other Centers, Institutes & Networks**

- Center for Accelerating Dissemination & Implementation Science (Adsul)
- Center for Infectious Disease & Immunity (Wu)
- Center for Disaster Medicine (Banks)
- Institute for Ethics (Bolton)
- Center for Forensic Imaging (Adolphi)
- Center for Global Health (Perkins)
- Center for HPV Prevention (Wheeler)
- Center for Memory & Aging (Rosenberg)
- Center for Molecular Discovery (Buranda)
- Center for Native American Health (Parker)
- Institute for Resilience, Health & Justice (Girardet)
- Center for Health Equity & Preparedness (Couig)
- Center for Healthcare Equity in Kidney Disease (Myaskovsky)
- Center for Participatory Research (Wallerstein)
- Center of Excellence for Orthopedic Surgery & Rehabilitation (Schenck)
- Substance Use Research & Education Center (Bakhireva)
- Diabetes Prevention & Outcomes Center (Schade)
- Epidemiology & Prevention Interdisciplinary Center for Sexually Transmitted Infections (Wheeler)
- Center for Innovation in Health & Education (Frank)
- Kidney Institute of New Mexico (Wagner)

**Signature Research Programs**

- Brain & Behavioral Health Institute (Bakhireva & Bhaskar)
- Cardiovascular & Metabolic Disease (Liu)
- Child Health Research (Girardet)
- Environmental Health Sciences (Campen)
- Infectious Disease & Immunity (Cannon)

Contracts & Grants 2024

Office of the Vice President .....	36
Office of Research .....	36
Animal Resource Facility .....	36
Center for Healthcare Equity in Kidney Disease....	36
Center for Infectious Diseases & Immunity .....	36
Center for Memory & Aging .....	36
Center for Telehealth .....	36
Health Sciences Library & Informatics Center .....	36
Clinical & Translational Science Center .....	37
College of Nursing .....	38
College of Pharmacy .....	38
College of Population Health .....	39
School of Medicine .....	40
Anesthesiology & Critical Care Medicine .....	40
Biochemistry & Molecular Biology .....	40
Cell Biology & Physiology .....	40
Comprehensive Cancer Center .....	40
Dental Medicine .....	43
Dermatology .....	43
ECHO Institute .....	43
Emergency Medicine .....	44
Family & Community Medicine .....	46
Internal Medicine .....	47
Molecular Genetics & Microbiology .....	49
Neurology .....	49
Neurosciences .....	50
Obstetrics & Gynecology .....	51
Office of the Medical Investigator .....	51
Ophthalmology & Visual Sciences .....	52
Orthopaedics & Rehabilitation .....	52
Pathology .....	52
Pediatrics .....	53
Psychiatry & Behavioral Sciences .....	55
Radiology .....	57
Student Services .....	57
Surgery .....	57
UNM Hospital .....	58
UNM Medical Group, Inc .....	58



## OFFICE OF THE VICE PRESIDENT, HEALTH SCIENCES RESEARCH

### Ryan Cangiolosi

Small Business Administration  
Growth Accelerator  
Fund Competition \$50,000

Small Business Administration  
Growth Accelerator Fund  
Competition - Continuation \$150,000

### Melissa Ivers

N.M. Department of Health  
DOH Physician, PA and/or NP Services at  
Turquoise Lodge \$40,000

N.M. Department of Health  
PA and/or NP Services at DOH  
NMBHI FY24 \$128,000

### Hengameh Raissy

UNM Foundation  
FY24 Private Gifts for Research  
(7/1/23 - 5/31/24) \$1,649,415

## HEALTH SCIENCES OFFICE OF RESEARCH

### Hengameh Raissy

Bureau of Health Resources  
Development  
UNM HSC MRI Equipment \$3,000,000

N.M. Higher Education Department  
Q1/Q2 Award Cycle: Technology  
Enhancement Funds \$2,939,243

## Animal Resource Facility

### Tara Konecny

New Mexico VA Health Care  
System  
Veterinary Services for the N.M. Veterans  
Affairs Health Care System \$36,475

## Center for Healthcare Equity in Kidney Disease

### Larissa Myaskovsky

Dialysis Clinic, Inc.  
Comparing Kidney Transplantation  
Outcomes in Undocumented Immigrants  
and U.S. Citizens - Continuation \$48,976

University of Colorado  
NAVIGATE Kidney: A Multi-Level  
Intervention to Reduce Kidney  
Health Disparities \$315,557

University of Nevada, Las Vegas  
Rural Early Pregnancy - Epidemiology  
of Complications \$304,506

## Center for Infectious Diseases & Immunity

### Michelle Ozburn

National Institute of Allergy and  
Infectious Diseases  
Biology of Infectious Disease and  
Inflammation - Continuation \$299,398

### Terry Wu

Advanced Technology International  
MOD 12 Nanolipoprotein Particle-  
Based Subunit Vaccine Against  
Pneumonic Tularemia - Non-  
Specific Supplement \$939,566

Lawrence Livermore National  
Laboratory  
LLNL STNI-17-TA1-1-0042 - Non-  
SpecF432:F433ific Supplement  
Mod 7 \$30,000

Lawrence Livermore National  
Laboratory  
LLNL STNI-17-TA1-1-0042 - Non-Specific  
Supplement MOD 6 \$20,000

Lawrence Livermore National  
Laboratory  
LLNL STNI-17-TA1-1-0042 - Non-Specific  
Supplement Mod 8 \$60,000

Lawrence Livermore National  
Laboratory  
STNI-17-TA1-1-0042 Modification 4 \$65,000

## Center for Memory & Aging

### Gary Rosenberg

National Institute of Neurological  
Disorders and Stroke  
Validation of Biomarkers of Small Vessel  
Injury in VCID - Continuation \$3,816,462

National Institute on Aging  
New Mexico Alzheimer's Disease  
Research Center \$4,422,177

University of Washington  
National Alzheimer's  
Coordinating Center \$800

University of Washington  
National Alzheimer's Coordinating  
Center - Continuation \$1,600

### Rawan Tarawneh

Lovelace Biomedical &  
Environmental Research Institute  
Swine Samples/Porcine Project \$14,000

National Institute on Aging  
Elucidating Endothelial Injury in  
Alzheimer Disease \$2,140,130

## Center for Telehealth

### Robert Sapien

Union County General Hospital  
Child Ready Telehealth \$25,000

## HEALTH SCIENCES LIBRARY & INFORMATICS CENTER

### Deirdre Caparoso

South Central Academic Medical  
Libraries Consortium  
Using the MISO Survey at HSLIC \$4,999

University of Utah, Spencer E.  
Eccles Health Sciences Library  
Connecting Underserved Communities to  
Health Sciences Resources Via  
Public Libraries \$9,234

### Laura Hall

University of Utah Spencer E.  
Eccles Health Sciences Library  
Native Health Database Community  
Engagement Studios \$41,029

### Melissa Rethlefsen

Oak Ridge Associated Universities  
All of Us Data Training & Engagement for  
Academic Libraries \$55,000

## CLINICAL & TRANSLATIONAL SCIENCE CENTER

### Abinash Achrekar

Northwestern University  
REACT-AF \$29,876

### Justin Baca

Los Alamos National Laboratory  
DTRA/LANL - The Human Breath Baseline:  
a Keystone for Breath Biomarker Studies -  
Continuation 5 \$62,000

Los Alamos National Laboratory  
DTRA/LANL - The Human Breath Baseline:  
a Keystone for Breath Biomarker Studies -  
Continuation Y4 \$107,721

TriCore Reference Laboratories  
T.O. # 37 Ventura Prototypes/Tricore -  
Specific Supplement \$3,200

### Lisa Cacari-Stone

Westat  
WEAVE NM 3.0 \$1,182,797

Westat  
WEAVE NM 4.0 \$1,400,000

### Judy Cannon

National Center for Advancing  
Translational Sciences  
HSC Clinical & Translational Science Center  
KL2 2020-2025 - Continuation  
Yr 5 \$394,876

### Eliseo Castillo

National Institute of Environmental  
Health Sciences  
Defining the Harmful Effects of  
Microplastics on Gastrointestinal  
Health - Continuation \$370,181

National Institute of Environmental  
Health Sciences  
Defining the Harmful Effects of  
Microplastics on Gastrointestinal Health -  
Continuation Y3 \$370,181



National Institute of Environmental  
Health Sciences  
Diversity Supplement - Castillo R01 \$63,601

### Kathryn Frieze

National Institute of Allergy and  
Infectious Diseases  
Bacteriophage Virus-Like Particle Vaccines  
for Chlamydia Trachomatis Urogenital  
Infection - Continuation \$344,805

National Institute of Allergy and  
Infectious Diseases  
Bacteriophage Virus-Like Particle  
Vaccines for Chlamydia Trachomatis  
Urogenital Infection - Non-Specific  
Supplement \$38,312

### Michelle Harkins

Vanderbilt University Medical  
Center  
PEER (ACTIV 4d RAAS) - Executive  
Committee Continuation 3 \$21,025

### Alberta Kong

University of Arkansas  
Protocol Chair Dr. Kong for the Obesity  
Study (Previously Phentermine) -  
Year 3 \$31,837

### Jongwon Lee

University of Nevada, Las Vegas  
CTR-IN: COVID19-driven Anti -  
Asian Racism \$66,000

### Jessie Maxwell

University of Arkansas  
DCOC Leadership Committee - Maxwell -  
YEAR 3 \$25,798

University of Arkansas  
Junior Pilot Studies - ISPECTN - INTACT -  
CYCLE 3 YEAR 4 \$42,448

### Nancy Pandhi

National Center for Advancing  
Translational Sciences  
HSC Clinical & Translational Science Center  
UL1 2020-2025 -  
Continuation Y5 \$4,118,800

University of Nevada, Las Vegas  
Institutional Development Award Program  
Infrastructure for Clinical and Translational  
Research: BERD - Continuation \$24,838

University of Nevada, Las Vegas  
Institutional Development Award Program  
Infrastructure for Clinical and Translational  
Research: CEO - Continuation \$23,426

University of Nevada, Las Vegas  
Institutional Development Award Program  
Infrastructure for Clinical and Translational  
Research: PDC - Continuation \$156,903

University of Nevada, Las Vegas  
Institutional Development Award Program  
Infrastructure for Clinical and Translational  
Research: T & E - Continuation \$51,176

### Eric Prossnitz

New Mexico Start-Up Factory  
Year 2: Development of an Educational  
Product for Accelerating Solutions for  
Commercialization and Entrepreneurial  
Development in Western IDeA States -  
Continuation \$63,089

### Hengameh Raissy

Eunice Kennedy Shriver National  
Institute of Child Health and  
Human Development  
UNM Pediatric Clinical Trials Center in  
IDeA States Pediatric Clinical Trials -  
Continuation \$416,580

University of Arkansas  
MoVeUP APP (Quantitative) Study -  
Continuation YR3 \$15,250

### Kristin Raschke

University of Arkansas  
BREATHE Study - Continuation \$47,072

University of Arkansas  
BREATHE Study: Bronchitis Recovery and  
the Use of High Efficiency Particle Air  
Filters - Non-Specific Supplement \$17,358

### Rawan Tarawneh

Columbia University  
MAP - Cost Reimbursement \$18,968



Columbia University  
MAP - Fixed Cost Agreement \$209,688

**Yuri Yoshida**  
University of Nevada, Las Vegas  
REP-EC Examining Socioeconomic  
Disparities in Functional Outcomes \$18,956

## COLLEGE OF NURSING

**Katherine Zychowski Bufford**  
National Institute of Environmental  
Health Sciences  
Systemic Implications and Novel  
Mechanisms of Circulating Extracellular  
Vesicles Following Inhaled  
Exposures \$517,288

**Christine Cogil**  
Bureau of Health Workforce  
Advanced Nursing Education Workforce -  
Continuation \$646,605

**Mary Couig**  
U.S. Department of Veterans Affairs  
Nurses on the Frontline Caring for Patients  
With COVID-19: Lived Experiences (Couig-  
IPA) - Continuation \$30,383

**Katie Kivlighan**  
Blue Cross Blue Shield of New  
Mexico  
Building Workforce Capacity: A Doula  
Residency Program \$209,503

University of Massachusetts  
Mammary Epithelium Permeability,  
Lactation Outcomes and  
Infant Health \$219,076

**Roberta Lavin**  
U.S. Department of Veterans Affairs  
Nurses on the Frontline Caring for Patients  
With COVID-19: Lived Experiences (Lavin-  
IPA) - Continuation \$49,080

**Felina Ortiz**  
Bureau of Health Workforce  
Advancing Midwifery Outcomes  
and Resiliency \$1,000,000

W.K. Kellogg Foundation  
UNM Midwifery Pathway  
for Birthworkers \$400,000

**Stephen Roper**  
City of Albuquerque  
Geriatric Education and Health  
Maintenance & HUD Expansion \$192,000

**Gina Rowe**  
University of Cincinnati  
Eliminating Structural Racism in Nursing  
Academia: a Systems Change Approach to  
Anti-Racist \$2,500

**Patricia Watts-Kelley**  
University of Colorado  
A Delphi Study to Identify Military Unique  
Competencies for Combat Palliative and  
End-of-Life Care \$3,480

## COLLEGE OF PHARMACY

**Ludmila Bakhireva**  
National Institutes of Health  
HBCD Study Biospecimens Administrative  
Supplement: Resource Generation for  
Delivery Specimens \$274,460

University of California, San Diego  
HBCD Peer Navigator \$47,374

**Amanda Barkley-Levenson**  
National Institute on Alcohol Abuse  
and Alcoholism  
Identification and Characterization of  
Novel Genetic Mechanisms in Alcohol Use  
Disorder and Excessive Drinking \$245,716

**Sarah Blossom**  
Columbia University  
Developmental Exposures to Arsenic:  
Pneumonia, Immunity and  
Microbiomes Supplement \$196,676

Columbia University  
Developmental Exposures to Arsenic:  
Pneumonia, Immunity,  
and Microbiomes \$187,165

Columbia University  
Developmental Exposures to Arsenic:  
Pneumonia, Immunity,  
and Microbiomes \$181,509

National Institute of Environmental  
Health Sciences  
New Mexico Integrative Science Program  
Incorporating Research in Environmental  
Sciences - Continuation \$1,297,636

National Institutes of Health  
Epigenetic Modulation of CD4 + T Cell  
Differentiation and Autoimmunity by  
Trichloroethylene \$227,064

**Matthew Campen**  
Eunice Kennedy Shriver National  
Institute of Child Health and  
Human Development  
Influence of Dietary Lipids on Gestational  
Outcomes of Ozone Exposure \$17,856

National Institute of Environmental  
Health Sciences  
Contaminant Metal Content in Wildfire  
Smoke and Neuroinflammation \$592,021

National Institute of Environmental  
Health Sciences  
Mechanisms of Vascular Toxicity From  
Inhaled Toxicants \$324,648

National Institute on Aging  
Acceleration of Circulatory and  
Neurological Aging Due to  
Wildfire Exposures \$671,696

National Institute on Aging  
Acceleration of Circulatory and  
Neurological Aging Due to Wildfire  
Exposures -  
Non-Specific Supplement \$74,632

PhRMA Foundation  
Exploring Chylomicron-Mediated  
Microplastic Translocation to the Placenta:  
Implications for Maternal and  
Fetal Health \$120,000

**Jose Cerrato**  
National Institute of Environmental  
Health Sciences  
UNM Metal Exposure Toxicity Assessment  
on Tribal Lands in the Southwest  
Superfund Research Program \$1,930,318

**Melanie Dodd**  
First Choice Community Healthcare  
Pharmacist Consultant  
Agreement \$448,856

First Nations Community  
Healthsource, Inc.  
First Nations Community  
Healthsource, Inc. \$50,000

**Esther Erdei**  
Albuquerque Area Indian Health  
Board, Inc.  
Indigenous Healthy Homes and Healthy  
Communities: A Community-Led Initiative  
to Improve Health and Support Indigenous  
Resilience in the U.S. Southwest \$975,967

Keya Foundation  
Cheyenne River Sioux Tribal Community  
Exposures to Metals in the Air \$15,834

Massachusetts Institute of  
Technology  
Short Courses for Teaching Gene-  
Environment Interactions With a Focus on  
Environmental  
Justice Communities \$37,800

Missouri Breaks Industries  
Research, Inc.  
Factors Influencing Pediatric Asthma  
(FIPA2) Study \$193,950

Missouri Breaks Industries  
Research, Inc.  
Factors Influencing Pediatric  
Asthma Study \$214,917

National Institutes of Health  
Shared Lived Experiences of Uranium-  
Exposed Communities - a Global  
Discussion Conference \$20,000

NYU Langone Health  
Research to Action: Assessing and  
Addressing Community Exposures to  
Environmental Contaminants Under  
the Leadership of NYU Department of  
Environmental Medicine -  
Non-Specific Supplement \$13,351

**Linda Felton**  
U.S. Department of Veterans Affairs  
Formulation and Batch Records for the VA  
Medical Center in  
Albuquerque, N.M. \$90,841

U.S. Department of Veterans Affairs  
Formulation and Batch Records for the  
VA Medical Center in Albuquerque,  
New Mexico - Specific Supplement \$3,741

**Laurie Hudson**  
National Institute of Environmental  
Health Sciences  
Mutational Signatures of a Combined  
Environmental Exposure: Arsenic and  
Ultraviolet Radiation \$495,601

**Joseph Lambson**  
Denver Health and Hospital  
Authority  
Researched Abuse, Diversion and  
Addiction-Related Surveillance System  
Work Order #19 \$12,500

Health Resources and Services  
Administration  
Poison Center Stabilization and  
Enhancement Program \$153,546

N.M. Department of Health  
COVID-19 Coronavirus All  
Hazards Line \$38,500

**Debra MacKenzie**  
National Institutes of Health  
Center for Native American Environmental  
Health Equity Research \$1,220,969

National Institutes of Health  
Understanding Risk Gradients  
From Environment on Native  
American Child Health Trajectories:  
Toxicants, Immunomodulation,  
Metabolic Syndromes & Metals  
Exposure - Continuation \$4,413,294

National Institutes of Health  
Understanding Risk Gradients From  
Environment on Native American  
Child Health Trajectories: Toxicants,  
Immunomodulation, Metabolic  
Syndromes, & Metals Exposure \$4,489,419

**Sara Nozadi**  
Youth Development, Inc.  
Intervention Program Evaluation \$40,000

**Azizi Ray**  
The Miriam Hospital  
Implementation of Pharmacist-Driven  
Long-Acting ART Program in HIV Clinics  
in Arkansas \$6,864

University of Arkansas  
Developing and Testing Innovative Care  
Pathways for Screening and Treatment of  
OUD/PTSD in Jails \$46,394

**Krystal Ward**  
Bureau of Health Workforce  
Health Professions Student Loans,  
Including Primary Care Loans/loans for  
Disadvantaged Students \$1,600,000

## COLLEGE OF POPULATION HEALTH

**Lorenda Belone**  
National Institute on Minority  
Health and Health Disparities  
Family Listening Program CBPR  
Culturally Centered Implementation  
Project \$662,026

**Kathryn Coakley**  
New Mexico Farmers' Marketing  
Association  
N.M.-Grown Meat Pilot Evaluation \$20,000

**Tracie Collins**  
N.M. Higher Education Department  
School of Public Health \$2,500,000

**Elizabeth Dickson**  
The Rita and Alex Hillman  
Foundation  
Advancing School Health Delivery Through  
Youth Engagement for  
Health Equity \$50,000

University of California, Davis  
Advancing Sexual Health Education  
Through Youth Engagement for  
Health Equity \$500,000

**Amber Dukes**  
N.M. Human Services Department  
GSA Center for Health Policy-HSD \$36,500

**Robert Frank**  
N.M. Human Services Department  
Mobile Crisis Response Teams - Specific  
Supplement \$1,428,200

N.M. Human Services Department  
The New Mexico Center for Health Policy -  
Continuation \$1,177,565

N.M. Human Services Department  
The New Mexico Center for Health Policy -  
Specific Supplement \$463,945

**Elise Jaramillo**  
National Institute on Minority  
Health and Health Disparities  
Place-Based Strengths and Vulnerabilities  
for Mental Wellness \$207,115

National Institute on Minority  
Health and Health Disparities  
Place-Based Strengths and Vulnerabilities  
for Mental Wellness - Non-Specific  
Supplement \$39,345

**Carmella Kahn**  
Northwest Portland Area Indian  
Health Board  
Entrepreneurship and Innovation to  
Support Elders \$4,881



**Laura Nervi**  
CRDF Global- Civilian Research and Development Foundation  
SyNC Regional Facilitator and Implementation Research \$104,250

**Alexis O'Donnell**  
TerraXplorations, Inc  
Bridges Cemetery Project \$25,000

**Rebecca Rae**  
New Mexico Community Capital  
The Future Is Indigenous Women - Continuation \$70,000

New Mexico Community Capital  
The Future Is Indigenous Women - Continuation \$70,000

Santa Clara Pueblo  
Khapo Owingeh RezRIDERS \$125,076

**Shannon Sanchez-Youngman**  
Drexel University  
Advancing Health Equity Through Innovative Community Capacity Building, Data Science & Delivering Community-Centered Structural Interventions & Outcomes: Drexel's ComPASS Coordinating Center \$370,195

**Francisco Soto Mas**  
Bernalillo County  
GTG Evaluation \$30,000

Thornburg Foundation  
Inventory and Evaluation of Farmer and Rancher Training Programs in New Mexico Phase 1 \$50,000

**Noell (Sue) Stone**  
Tulane University  
ACA - Public Health Training Centers - Continuation \$10,000

**Elizabeth Yakes Jimenez**  
Academy of Nutrition and Dietetics  
Essential Connections: Improved Referrals From Hospital to Community Meal Provision \$95,000

Academy of Nutrition and Dietetics  
Research Technical Assistance - PSA Specific Supplement With Ming Ji \$12,000

Academy of Nutrition and Dietetics  
Research Technical Assistance- PSA \$20,000

## SCHOOL OF MEDICINE

### Anesthesiology & Critical Care Medicine

**Sascha Alles**  
UNM Rainforest Innovations  
Chronic Pain Stem Cells and Personalized Drug Screening \$25,000

V.A. Office of Research and Development  
CIPN Immunotherapy Subaward \$39,838

### Biochemistry & Molecular Biology

**Meilian Liu**  
National Institute of Diabetes and Digestive and Kidney Diseases  
Transcriptional Control of Low-Thermogenic Adipocyte Formation and Function \$332,856

National Institute of Diabetes and Digestive and Kidney Diseases  
Transcriptional Control of Low-Thermogenic Adipocyte Formation and Function - Non-Specific Supplement \$22,190

**Vallabh Shah**  
George Washington University  
DPPOS-4 AD/ADRD Project - Continuation \$393,307

National Institute on Minority Health and Health Disparities  
Standing Strong in Tribal Communities: Addressing Elder Falls Disparity - Continuation \$524,294

**Nathan Zaidman**  
National Institute of Diabetes and Digestive and Kidney Diseases  
Gpr116 Regulation of Renal Acid Excretion - Continuation \$249,000

National Institute of Diabetes and Digestive and Kidney Diseases  
Gpr116 Regulation of Renal Acid Excretion - Non-Specific Supplement \$14,941

**Nancy Kanagy**  
National Institute of General Medical Sciences  
IMSD @ UNM HSC 2021 \$698,693  
Cell Biology & Physiology

**Amy Gardiner**  
National Institute on Alcohol Abuse and Alcoholism  
Molecular Targeting of the Cerebrovasculature During Prenatal Alcohol Exposure \$336,510

**Nikki Jernigan**  
American Heart Association  
Contributions of Altered Subcellular Localization of Acid-Sensing Ion Channel 1a to Pulmonary Hypertension \$67,388

**Vijay Naik**  
National Heart, Lung and Blood Institute  
Regulation of H2s Signaling in Vascular Function - RPPR Continuation \$524,216

**Sara G.M. Piccirillo**  
NICO Corporation  
The Identification of Molecular Biomarkers in the Microenvironment of Glioblastoma Residual Disease \$50,450

**Thomas Resta**  
National Heart, Lung, and Blood Institute  
2023 RPPR - Minority Institutional Research Training Program (T32) - Continuation \$342,790

National Heart, Lung, and Blood Institute  
Oxidant Signaling in Pulmonary Hypertension \$586,151

### Comprehensive Cancer Center

**Sarah Adams**  
Defense Health Program  
Advancing Clinical Research in Ovarian Cancer \$1,439,093

National Cancer Institute  
Mechanisms of Selective Therapeutic Synergy of PARP-Inhibition and CTLA4 Blockade Engaged by Interferon-Gamma in the Ovarian Tumor Microenvironment \$316,716

New Mexico Cancer Care Alliance  
Clinical Trial Subaward - Phase 1&2 - Continuation \$167,128

**Prajakta Adsul**  
Mayo Foundation for Medical Education and Research  
Evaluation of Community-Engaged Research Efforts at Mayo Clinic CTSA \$41,464

Mayo Foundation for Medical Education and Research  
Evaluation of Community-Engaged Research Efforts at Mayo Clinic CTSA \$43,466

N.M. Department of Health & Human Services  
Cancer Prevention and Control Program for N.M. \$26,500

University of Texas at Austin  
Investigating Facilitator-Driven, Multi-Level Implementation Strategies in Federally Qualified Health Centers to Improve Provider Recommendation and HPV Vaccination Rates Among Latino/a Adolescents \$26,264

**Eric Barteo**  
National Cancer Institute  
Impact of TNF on Oncolytic Virotherapy \$438,164

**Marianne Berwick**  
University of North Carolina  
Identification of Lethal Melanomas at the Time of Diagnosis (Resub) \$64,401

University of North Carolina  
Identification of Lethal Melanomas at the Time of Diagnosis (Resub) - Continuation \$96,016

**Ursa Brown-Glaberman**  
N.M. Cancer Research Alliance  
Clinical Trial Phase N/a \$182,495

**Shashank Cingam**  
N.M. Cancer Research Alliance  
Clinical Trial Phase 2 \$188,895

N.M. Cancer Research Alliance  
Clinical Trial Phase 3 \$185,695

Pfizer, Inc.  
Collaborative Outreach and Education for Management of Bi-Specific Antibody Treatment Side Effects in Relapsed/Refractory Multiple Myeloma \$81,004

**Zoneddy Dayao**  
American Cancer Society  
Lodging Plan for UNM Comprehensive Cancer Center - 2024/2025 \$25,000

American Cancer Society  
Transportation Plan for UNM Comprehensive Cancer Center 2023/2024 - Specific Supplement \$3,000

American Cancer Society  
Transportation Plan for UNM Comprehensive Cancer Center 2024/2025 \$25,000

N.M. Department of Health  
Development and Delivery of Cancer Survivorship Cancer Plans \$26,000

**Hua-Ying Fan**  
National Cancer Institute  
Repurposing Auranofin As a Novel Notch Pathway Inhibitor for Combinational Ovarian Cancer Therapy \$213,881

U.S. Army Medical Research Acquisition Activity  
Improve Targeted Ovarian Cancer Therapy Using the Novel Notch Pathway Inhibitor Auranofin \$915,000

**Matthew Fero**  
N.M. Cancer Research Alliance  
Clinical Trial Phase 1/2 \$185,695

N.M. Cancer Research Alliance  
Clinical Trial Phase N/a \$98,655

**Charles Foucar**  
N.M. Cancer Research Alliance  
Clinical Trial Phase 2 \$191,455

**Jennifer Gillette**  
National Cancer Institute  
University of New Mexico's CURE for Cancer \$273,246

**Dolores Guest**  
National Institutes of Health  
Southwest Transformative Educational Advancement and Mentoring Network \$412,791

**Richard Harvey**  
Public Health Institute  
N.M. Cancer Research Alliance - Clinical Trial Agreement - Continuation \$53,549

**Neda Hashemi**  
N.M. Cancer Research Alliance  
Clinical Trial Phase 2 \$188,255

**Atul Kumar**  
N.M. Cancer Research Alliance  
Clinical Trial Phase 2/3 \$188,895

N.M. Cancer Research Alliance  
Clinical Trial Phase 2/3 \$188,895

N.M. Cancer Research Alliance  
Clinical Trial Phase 3 \$188,895

N.M. Cancer Research Alliance  
Clinical Trial Phase 3 \$188,895

**Shuguang Leng**  
National Heart, Lung, and Blood Institute  
Lung Deposition Dose of Black Carbon in Blacks and Whites \$114,375

National Institute of Environmental Health Sciences  
Impact of Macrophage Carbon Load and Epigenetic Aging on Lung Function Decline and Mortality \$747,121

**Kimberly Leslie**  
U.S. Army Medical Research Acquisition Activity  
Progesterin Therapy for Endometrial Cancer \$1,070,517

Washington University  
Washington University Route 66 Endometrial Cancer SPORE \$287,878

Washington University  
Washington University Route 66 Endometrial Cancer SPORE- Pilot Projects \$49,562

**Erika Maestas**  
N.M. Cancer Research Alliance  
Clinical Trial Phase 2 \$188,895

**Peng Mao**  
National Cancer Institute  
Mechanism of Transcription-Coupled DNA Repair and Its Impact on Cancer Mutations \$289,461

National Cancer Institute  
Mechanism of Transcription-Coupled DNA Repair and Its Impact on Cancer Mutations - Non-Specific Supplement \$16,080

University of California, San Francisco  
The Mutational Mechanisms Shaping Melanocytes in Human Skin \$46,395

Washington State University  
Identifying Recurrent Driver Mutations in Skin Cancers by Targeted UV Damage Sequencing \$38,125

**Martha Mapalo**  
N.M. Cancer Research Alliance  
Clinical Trial Phase 3 \$188,930

**Dario Marchetti**  
National Cancer Institute  
Mechanisms of Melanoma Brain Metastasis by CTCs Isolated From Patients' Blood - Non-Specific Supplement \$8,500

National Cancer Institute  
Mechanisms of Melanoma Brain Metastasis by CTCs Isolated From Patients' Blood and CSF \$153,000

**Colleen McCormick**  
N.M. Cancer Research Alliance  
Clinical Trial Phase 2 \$158,495

N.M. Cancer Research Alliance  
Clinical Trial Phase 3 \$182,495





**Shiraz Mishra**

National Cancer Institute  
Cancer Research - Scholarship and Training Experiences in Population Sciences \$172,999

**Carolyn Muller**

N.M. Cancer Research Alliance  
Clinical Trial Phase 2 \$188,895

National Cancer Institute  
NCORP - Continuation \$1,588,186

**Jacklyn Nemunaitis**

N.M. Cancer Research Alliance  
Clinical Trial Phase 3 \$165,440

**Scott Ness**

National Cancer Institute  
Lab Automation for a Genomics Shared Resource \$68,012

**Viswanathan Palanisamy**

National Cancer Institute  
Targeting of RNA-Binding Protein FXR1 in HNSCC \$419,375

National Institute of Dental and Craniofacial Research  
Intersections of RNA-Binding Proteins and T-Cells \$453,000

National Institute of Dental and Craniofacial Research  
Intersections of RNA-Binding Proteins and T-Cells - Continuation \$441,308

National Institute of Dental and Craniofacial Research  
Mutations and Target Genes in Adenoid Cystic Carcinoma - Continuation \$393,714

National Institute of Dental and Craniofacial Research  
Mutations and Target Genes in Adenoid Cystic Carcinoma - Non-Specific Supplement \$34,996

**Eric Prossnitz**

National Cancer Institute  
GPER & Breast Carcinogenesis (3) - Continuation \$191,101

National Cancer Institute  
Molecular Mechanisms and Applications of Novel ER/GPER-Selective Ligands - Continuation \$502,165

National Cancer Institute  
Role of GPER in Obesity and Lipid Metabolism - Continuation \$45,574

**Avinash Sahu**

American Association of Immunologists  
The AAI Intersect Fellowship Program for Computational Scientists and Immunologists \$56,484

National Cancer Institute  
Identifying Drug Synergistic With Cancer Immunotherapy \$249,000

**Yolanda Sanchez**

National Cancer Institute  
Dissemination of a Colorectal Cancer Screening Program Across American Indian Communities in the Southern Plains and Southwest United States \$326,328

National Cancer Institute  
University of New Mexico Cancer Center Support Grant \$2,300,943

Oregon Health & Science University  
Fluorescence-Guided Surgery Using Near Infrared Nerve-Specific Probes for Cranial Nerve Preservation \$9,315

Oregon Health & Science University  
Fluorescence-Guided Surgery Using Near Infrared Nerve-Specific Probes for Cranial Nerve Preservation - Continuation \$8,227

**Rita Serda**

National Cancer Institute  
Preclinical Efficacy of Allogeneic and Human Silicified Cancer Vaccines \$356,469

**Andrew Sussman**

Klein Buendel  
#4corners4health: A Social Media Cancer Prevention Program for Rural Young Adults \$157,802

University of Arizona  
Ethnicity and Lung Cancer Survival: A Test of the Hispanic Sociocultural Hypothesis \$25,490

**Alan Tomkinson**

Lawrence Berkeley National Laboratory  
Structural Cell Biology & Physiology of DNA Repair Machines Project \$68,175

National Cancer Institute  
Targeting DNA Ligase I in Ovarian Cancer \$342,892

National Institute of Environmental Health Sciences  
Roles of Lig3 and XRCC1 Genes in Genome Stability \$326,549

**Moises Harari Turquie**

N.M. Cancer Research Alliance  
Clinical Trial Phase 2 \$185,695

**Cosette Wheeler**

Global Diagnostics Labs, LLC  
Archived Specimen Stability for HPV MRNA Testing \$46,200

**Charles Wiggins**

Dana Farber Cancer Institute  
Disparities in Clinical Trial Enrollment Among Adolescents and Young Adults With Cancer \$43,386

N.M. Department of Health  
For Breast and Cervical Cancer Surveillance \$6,330

National Cancer Institute  
NCI Patterns of Care Study: Diagnosis Year 2021 \$63,204

National Cancer Institute  
Surveillance Epidemiology and End Results Program - Continuation \$2,739,203

National Cancer Institute  
Surveillance Epidemiology and End Results Program - Specific Supplement \$219,377

University of Iowa  
Development of Small Area Interactive Risk Maps for Cancer Control Efforts - Continuation \$30,659

**Cheryl Willman**

National Cancer Institute  
Engagement of American Indians of Southwestern Tribal Nations in Cancer Genome Sequencing - Continuation \$1,278,909

National Cancer Institute  
Engagement of American Indians of Southwestern Tribal Nations in Cancer Genome Sequencing - Diversity Supplement \$144,977

**Dental Medicine**

**Robin Gatlin**

United Concordia Dental Charitable Fund  
United Concordia Scholarship \$6,000

**Nathan Boyd**

N.M. Higher Education Department  
Dentist Training to Treat Pediatric and Developmental Patients \$900,000

N.M. Higher Education Department  
Dentist Training to Treat Pediatric and Developmental Patients \$1,200,000

**Dermatology**

**John Durkin**

Amgen, Inc.  
Amgen 20210144-Rocket Shuttle \$198,720

Amgen, Inc.  
Amgen 20210145-rocket-astro \$289,190

Amgen, Inc.  
Amgen 20210158-Rocket Voyager \$225,775

Parexel International  
B7981041 \$73,948

**ECHO Institute**

**Sanjeev Arora**

Bayer Cares Foundation  
Bayer - Women and Girls Health Promotion LATAM \$215,394

Boehringer Ingelheim Pharmaceuticals, Inc.  
Miners' Wellness ECHO Program \$200,000

Bureau of Health Workforce  
Creating Cultures of Resiliency for Behavioral Health Providers Through Project ECHO - Continuation YR3 \$492,333

Bureau of Indian Affairs  
Using Project ECHO to Enhance Resilience for OJS Law Enforcement and Corrections Officers - Continuation \$350,000

Centers for Disease Control and Prevention  
Expanding Access to Evidence-Based Diabetes Programs Using Project ECHO - Continuation YR2 \$1,000,000

Centers for Medicare & Medicaid Services  
Minority Research Grant Program 2023 \$333,333

Con Alma Health Foundation  
Building Rural Maternal Health Capacity \$350,000

Executive Secretary of the Council of Ministers of Health of Central America and the Dominican Republic  
Partner Launch Training for Latin American ECHO Partners \$36,320

Family Health Centers of San Diego  
FHCS Respiratory Viruses in Older Californians ECHO Series \$48,170

Fidelity Foundations  
ECHO for Career and College Counseling Program in New Mexico \$750,000

GE Healthcare  
Expanding Access to Maternal Child Health in Indonesia \$300,000

Health Resources and Services Administration  
South Central AIDS Education and Training Center Program - Supplement Year 5 \$129,212

Health Resources and Services Administration  
South Central AIDS Education and Training Center Program (Round 2) \$4,086,980

JHPIEGO Corporation  
ECHO Support for Global Reach II Activities in Sierra Leone: Y3 Q1 \$28,851

JHPIEGO Corporation  
Global Reach II: Echo Implementation Activities in Zambia \$20,000

JHPIEGO Corporation  
Strengthening Hospital Systems in East Jerusalem \$150,000

Lourie Center for Children's Social Emotional Wellness  
ECHO for Trauma Informed Preschool Support Program - Continuation \$32,079

Merck Company Foundation  
ECHO Partnership With Merck Foundation for Expanding Access to Cancer Care in India, Vietnam, Malaysia and Indonesia \$10,993,634

N.M. Corrections Department  
N.M. Corrections Department Hepatitis C - Continuation \$420,000

N.M. Corrections Department  
NMPEP and CPEP Programs \$8,939,770

N.M. Department of Health  
Environmental Health ECHO Series, Sponsored by the Climate Change and Human Health ECHO \$50,000

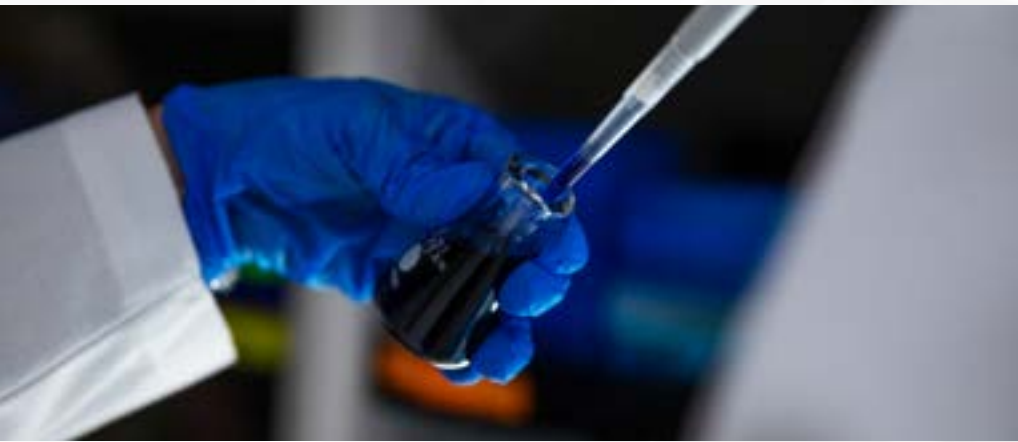
N.M. Department of Health  
N.M. DOH Sponsorship of AETC HIV/HCV Conference 2024 \$20,000

N.M. Early Childhood Education & Care Department  
ECHO Collaboration on Early Childhood Education and Care \$3,631,434

N.M. Public Education Department  
Project ECHO and N.M. PED Collaboration on Social Emotional Learning 2023 - 2024 \$100,000

Northwest Portland Area Indian Health Board  
Indian Health Services TeleECHO Clinic Support - Continuation \$152,600





Office of Rural Health Policy  
Expanding Access to Care for Long-Haul  
COVID Patients in Rural New Mexico -  
Continuation Year 3 \$475,000

PATH  
Reaching Every At-Risk Community and  
Household With Malaria \$27,376

PATH  
Reaching Every At-Risk Community and  
Household With Malaria -  
Continuation \$40,000

Patient-Centered Outcomes  
Research Institute  
Improving Outcomes for Patients With  
Multiple Chronic Conditions Using  
ECHO \$10,738,368

Pfizer, Inc.  
ECHO for Diabetes and Metabolic  
Syndrome in LATAM \$400,000

Pfizer, Inc.  
Pfizer & Project ECHO Collaboration:  
Telementoring, Equity & Advocacy  
Collaboration for Health Through  
Antimicrobial Stewardship \$1,229,150

Pfizer, Inc.  
Strengthening Maternal and Child  
Nutrition in India Using the ECHO  
Model \$400,000

Project & Technology Consulting  
Services, Inc  
ASPR Program Support Services - Clinical  
Rounds \$330,750

Schmidt Futures Foundation  
ECHO Partnership With Schmidt Futures  
Foundation for Improving Global Public  
Health Capacity \$1,020,000

The Task Force for Global Health  
CDC Global Action in Healthcare Network  
Antimicrobial Resistance -  
Continuation \$22,351

The Task Force for Global Health  
CDC Global Action in Healthcare Network  
Antimicrobial Resistance - Specific  
Supplement \$3,528

U.S. Department of the Interior  
Climate Action Readiness Equity \$2,500

UBS Optimus Foundation  
Building CHW Capacity With Project  
ECHO \$314,000

University of Colorado  
NMPEP Replication Project \$23,000

W.K. Kellogg Foundation  
Effective Narratives in the New College  
Admissions Framework ECHO \$200,000

World Health Organization  
WHO Advanced HIV Disease Learning  
Series \$24,801

World Health Organization  
WHO Advanced HIV Disease Learning  
Series - Continuation \$26,539

World Health Organization  
WHO AMR Webinar \$11,340

World Health Organization  
WHO CNO ECHO Community of  
Practice \$19,738

World Health Organization  
World Hand Hygiene Day \$12,304

### Emergency Medicine

**Justin Baca**  
Abbott Point of Care Inc.  
PO2 and Lactate Tests  
CS-2024-0004 \$63,332

Radiometer Medical ApS  
Radiometer Adult MC Study -  
Specific Supplement \$67,201

Radiometer Medical ApS  
Radiometer Adult MC Study -  
Specific Supplement #2 \$111,677

TOSOH Bioscience, Inc  
CL D-Dimer Study \$346,752

**Laura Banks**  
N.M. Department of Transportation  
Pedestrian Safety Initiative  
2023-24 \$300,000

**Whitney Barrett**  
Department of the Air Force  
Kirtland AFB Medical Direction -  
Continuation 5 \$16,694

Department of the Air Force  
Kirtland AFB Medical Direction -  
Continuation 9 \$16,695

**Caitlin Bonney**  
Purdue Pharma L.P.  
Purdue Nalmefene v. Naloxone \$291,980

Purdue Pharma L.P.  
Purdue Nalmefene Vs Naloxone -  
Non-Specific Supplement \$34,264

**Darren Braude**  
American Medical Response  
Ambulance Service, Inc.  
EMS Medical Director \$184,800

Eagle Nest Volunteer Ambulance  
Service  
Medical Director - Continuation \$3,600

Isleta Pueblo  
EMS Medical Director \$7,000

Isleta Pueblo  
EMS Medical Director \$3,000

K&I Field Services  
Medical Director - Continuation \$13,250

Kindred Hospital  
Emergency Medicine  
Critical Care Services \$25,000

New Mexico Community Care  
Medical Director \$25,000

Quick Draw  
Medical Director - Continuation \$880

Sandoval County Regional  
Emergency Communications  
Center  
Medical Director - Continuation \$28,368

State of New Mexico  
EMTs, Medical Director, Professional  
Services - Continuation \$56,133

Taos County Fire Department  
EMS Medical Director -  
Continuation \$36,000

University of Utah  
EMS Medical Toxicology  
Consultation \$25,000

Valencia County  
Medical Director - Continuation \$45,744

**Kymmalee Chang**  
City of Rio Rancho  
SWAT Operations and Training \$10,000

**Cameron Crandall**  
Yale University  
CTN-0099: Emergency Department-  
Initiated Buprenorphine Validation

Network Trial - Non-Specific  
Supplement \$44,707

**Ashley Davis**  
Merck & Company, Inc.  
Be Vaxed: Broad Efforts at Vaccination in  
the ED \$235,684

**Jon Kenneth Femling**  
Olive View UCLA Medical Center  
IDnet MPOX Public Health Monitoring -  
NCCContinuation \$21,350

Olive View UCLA Medical Center  
Project PREVENT II -  
Continuation 3 \$80,000

University of California, Los  
Angeles  
EMERGENCY ID NET Study -  
Continuation \$7,878

**Ashley Gilbert**  
DCI Donor Services  
EMS Medical Director -  
Continuation \$30,000

**Andrew Harrell**  
N.M. Public Safety Department  
Tactical Emergency Medical Support -  
Continuation \$366,928

National Park Service  
Grand Canyon Medical Direction Services -  
Mod 1 \$37,333

**Ryan Huebinger**  
University of Arizona  
ICECAP Subaward \$95,000

Vanderbilt University Medical  
Center  
STRIVE No.114720 Subcontract \$458,752

**Amy Jameson**  
Alamo Navajo School Board, Inc.  
Medical Director - Continuation \$22,500

Albuquerque Sexual Assault Nurse  
Examiner  
Medical Director - Continuation \$14,869

Bernalillo County Sheriff's Office  
Medical Director - Continuation \$55,000

Bosque School  
EMS Medical Director -  
Continuation \$7,400

Catron County  
EMS Medical Director \$11,000

Cottonwood Gulch Expeditions  
Medical Director \$25,000

Jemez Mountain Trail Runs  
Medical Director \$2,000

N.M. Department of Public Safety  
Medical Director, Search & Rescue, Medical  
Review Officer - Continuation \$50,000

N.M. Department of Public Safety  
Professional Services TEMS -  
Continuation \$188,504

Pueblo of Isleta  
Medical Director \$44,000

Santo Domingo Pueblo  
Medical Director \$19,800

Town of Red River  
Medical Director - Continuation \$12,000

Valencia Regional Emergency  
Communication Center  
Medical Director \$9,000

Village of Cimarron  
Medical Director - Continuation \$3,600

**Steven McLaughlin**  
State of New Mexico  
Emergency and Specialty Services -  
Continuation \$1,000,000

**Gary Mlady**  
Bernalillo County  
Medical Director - Continuation \$14,000

**Kimberly Pruett**  
N.M. Department of Health  
FY24 NM DOH Statewide EMS -  
Continuation 8 \$75,000

**Jay Raval**  
University of Pittsburgh  
Massive Transfusion in Children II \$211,611

**Diane Rimple**  
Town of Mountainair  
EMS Medical Director -  
Continuation \$6,000

Wilderness Medics Inc  
EMS Medical Director -  
Continuation \$25,000

**Robert Sapien**  
Albuquerque Area Indian Health  
Service  
Mescalero Service Unit & UNM HSC  
Emergency Medicine Child Ready  
Telehealth Year 1 \$51,750

Guadalupe County Hospital  
Child Ready- Center for Telehealth -  
Continuation \$25,000

Maternal and Child Health Bureau  
NM EMS for Children Program -  
Continuation \$83,352

Office for the Advancement of  
Telehealth  
Child Ready Rural Emergency Support of  
Trauma - Continuation \$300,000

Roosevelt General Hospital  
Child Ready- Center for  
Telehealth \$25,000

**Philip Seidenberg**  
TriCore Reference Laboratories  
TO#38\_PAS-18SUSTO33 Tricore BD  
Vacutainer \$129,155

TriCore Reference Laboratories  
TO#39\_PAS-19SUSTO55 Tricore BD  
Vacutainer \$38,220

TriCore Reference Laboratories  
TO#40\_PAS-19SUSTO46 Tricore BD  
Vacutainer \$116,480

**Ming Wang**  
University of Pittsburgh  
LITES Calcium and Vasopressin Following  
Injury Early Resuscitation Trial \$500,000

**Brandon Warrick**  
U.S. Department of Justice  
2nd District of N.M. SVU- Expert Witness -  
Warrick - Curley v. United States \$26,886

**Chelsea White**  
Cibola County  
Medical Director- Continuation \$12,000

National Park Service  
Medical Director El Malpais/El Morro -  
Continuation 3 \$4,500

National Park Service  
Medical Director El Malpais/El Morro -  
Continuation 6 \$9,000

Pueblo of Laguna  
Laguna Pueblo Medical Direction -  
Continuation 7 \$552,564

Pueblo of Zuni  
Medical Director - Continuation \$60,000

**Jenna White**  
Presbyterian Medical Services  
EMS Medical Director -  
Continuation \$23,760

Pueblo of Jemez  
FY 24 Pueblo of Jemez Medical Direction -  
Continuation 5 \$24,000

The Pueblo of Santo Domingo  
Medical Direction for the Pueblo of Santo  
Domingo - Continuation \$19,800

Village of Cuba  
Medical Director - Continuation \$4,100

**Jason Williams**  
Army National Guard  
Mountain Medicine Course - National  
Guard \$25,000

Defense Threat Reduction Agency  
Advanced Wilderness First Aid  
Course \$9,750

N.M. Energy, Minerals & Natural  
Resources Department Forestry  
Division  
UNM Wilderness First Aid Course \$3,000



N.M. Environment Department  
Wilderness Prep Mountain Medicine  
Course - NMED \$50,000

New Mexico National Guard  
NMARNG Mountain Medicine Course -  
Federal \$17,000

U.S. Fish and Wildlife Service  
Wilderness First Aid Course -  
Federal \$8,000

### Family & Community Medicine

**Melody Avila**  
Falling Colors Corporation  
ADOBE HSD - Continuation \$1,073,578

**Antoinette Benton**  
Falling Colors Corporation  
FY24 Pre-Administration Screening and  
Resident Review (TEASC) -  
Continuation \$249,400

N.M. Department of Health  
HBCD Peer Navigator \$1,438,814

**Venice Ceballos**  
Root Change  
Community Power - Exchange  
Program \$22,500

**Heidi Fredine**  
Rio Grande Community  
Development Corp., Inc.  
Growing Together Evaluation \$75,000

Rio Grande Community  
Development Corporation, Inc.  
Color Theory Evaluation \$39,600

**Arthur Kaufman**  
Bernalillo County  
Tiny Home Village Community Support  
Services - Continuation FY24 \$455,000

City of Albuquerque  
Gateway Receiving Area \$800,000

City of Albuquerque  
Interagency Intensive Case Management  
System to Decrease Substance Abuse in  
Albuquerque - FY24 \$750,000

N.M. Aging & Long-Term Services  
Department  
Community Health Workers in the New  
Mexico Aging Network -  
Continuation \$232,630

N.M. Aging and Long-Term Services  
Department  
Community Health Workers in the  
New Mexico Aging Network \$182,889

N.M. Department of Health  
New Mexico Immunization Coalition FY24 -  
Continuation \$175,658

N.M. Department of Health  
Vaccine Health Equity Project - COVID19 -  
Non-Specific Supplement \$9,938,920

N.M. Human Services Department  
Reach Intervene Support and Engage  
Program \$248,426

**Sarah Lathrop**  
N.M. Department of Health  
FY24 N.M. Emerging Infections  
Program \$1,097,373

N.M. Department of Health  
FY25 N.M. Emerging Infections Program -  
Continuation \$1,088,249

**Lawrence Leeman**  
Eunice Kennedy Shriver National  
Institute of Child Health and  
Human Development  
HEAL Initiative: UNM HSC Clinical  
Center \$222,694

Reunion Neuroscience Inc.  
Clinical Trial Phase 2 RE104 Safety &  
Efficacy Study in PPD \$161,199

RTI International  
OPTimize Study MOU \$9,470

University of Cincinnati  
Promoting Research With Mothers  
Receiving OUD Treatment \$6,574

Usona Institute  
CTA PSIL301 \$700,291

**Orrin Myers**  
Bureau of Health Workforce  
National Park Service  
Valles Caldera (CESU) \$25,000

NeurInsight, LLC  
Towards Intra-Operative Guidance in Brain  
Tumor Surgery Using Real-Time Resting-  
State Functional MRI - Phase I \$38,820

NeurInsight, LLC  
Towards Intra-Operative Guidance in Brain  
Tumor Surgery Using Real-Time Resting-  
State Functional MRI - Phase I - Specific  
Supplement \$8,031

**Janet Page-Reeves**  
City of Albuquerque  
Albuquerque Community Safety Training  
Evaluation \$99,900

**Tassy Parker**  
University of Colorado Denver  
Center for American Indian and Alaska  
Native Diabetes Translation Research -  
Continuation \$42,864

University of Colorado Health  
Sciences Center  
Center for American Indian and Alaska  
Native Health Disparities -  
Continuation \$8,589

University of Minnesota  
AMICA Resubmission -  
Continuation \$395,680

Washington State University  
NEAR WSU P01 - Continuation \$27,863

**Felisha Rohan-Minjares**  
First Nations Community  
Healthsource, Inc.  
Physician Services With Obstetrics -  
Continuation \$36,000

Manzano Medical Group  
Family and Community Medicine \$29,952

Manzano Medical Group  
Family and Community Medicine -  
Continuation \$29,952

New Mexico Perinatal Collaborative  
Director of Maternal Health Initiatives -  
Continuation \$40,104

Presbyterian Medical Services  
Physician Services \$25,000

Presbyterian Medical Services  
Physician Services \$25,000

Presbyterian Medical Services  
Physician Services - Continuation \$25,000

**Pilar Sanjuan**  
Lovelace Biomedical &  
Environmental Research Institute  
The ASCEND Study - FY24  
Continuation \$127,993

**Helene B. Silverblatt**  
Bureau of Health Workforce  
New Mexico Area Health Education  
Centers Point of Service Maintenance and  
Enhancement - Continuation \$493,977

Center for Health Innovation  
CHI Contract for Services FY24 \$5,000

**Daniel Williams**  
University of Mississippi Medical  
Center  
Center for Innovation and Discovery in  
Addictions Mississippi Horizons Project -  
Continuation \$78,237

### Internal Medicine

**Christos Argyropoulos**  
Dialysis Clinic, Inc.  
COVID and Vaccination in CKD \$118,927

Dialysis Clinic, Inc.  
Grand Rounds Support -  
Continuation \$59,750

Novo Nordisk, Inc.  
Clinical Trial Phase III: EX6018-4758 Zeus -  
Specific Supplement \$1,500

**Nour Ass'ad**  
United Therapeutics Corporation  
TETON PPF \$93,285

**James Blankenship**  
Weill Cornell Medical College  
RECHARGE \$133,698

**Steven Bradfute**  
Defense Threat Reduction Agency  
Unsupervised and Semi-Supervised ML/AI  
With Iterative Experimentation for Rapid  
Identification of Targeted Alphaviral Small  
Molecules - Continuation \$499,645

Defense Threat Reduction Agency  
Unsupervised and Semi-Supervised ML/AI  
With Iterative Experimentation for Rapid  
Identification of Targeted Alphaviral Small  
Molecules - Non-Specific  
Supplement \$100,000

Los Alamos National Laboratory  
Rapid Assessment of Platform  
Technologies to Expedite Response - Non-  
Specific Supplement \$60,000

Los Alamos National Laboratory  
Rapid Assessment of Platform  
Technologies to Expedite Response -  
Specific Supplement \$100,000

Los Alamos National Laboratory  
Rapid Assessment of Platform  
Technologies to Expedite Response (Phase  
II) - Continuation \$150,000

Los Alamos National Laboratory  
Unsupervised Tensor Factorization  
ML Platform for Discovery of Broad-  
Spectrum Antiviral Targets From Global  
Omics Data \$50,000

Sandia National Laboratories  
Assessment of Coding and Noncoding  
RNA Responses to Arenavirus  
Infection \$200,000

**M. Gabriela Cabanilla**  
Merck & Company, Inc.  
CMV Disease Among Racial and  
Ethnic Minority Populations - Specific  
Supplement \$9,520

**Kelly Chong**  
Dialysis Clinic, Inc.  
Kidney: To Take or Not to Take \$166,015

**Emily Cotter**  
Cambia Health Foundation  
2023 Sojourns Scholar Leadership Award -  
Trauma-Informed Palliative Care \$180,000

**Pablo Garcia**  
Calliditas Therapeutics  
East by Southwest Fourth Update in  
Nephrology Conference \$5,000

**Michelle Harkins**  
Duke University  
RECOVER-VITAL \$76,950

**Theresa Heynekamp**  
Cystic Fibrosis Foundation  
Cystic Fibrosis Care Center Program -  
Continuation \$98,310

**Ivy Hurwitz**  
National Science Foundation  
Innovation Corps - National Innovation  
Network Teams Program \$50,000

Office of Naval Research  
Evaluation of Essential Oil-Based  
Larvicides for Mosquito Control in Sub-  
Saharan Africa - Continuation \$133,331

**Michelle Iandiorio**  
AbbVie  
A Phase 2, Multicenter, Randomized,  
Double-Blind, Placebo-Controlled Study to  
Evaluate Efficacy, Safety, Tolerability and  
Pharmacokinetics of Budigalimab and/or  
ABBV-382 in People Living With HIV on  
Stable Antiretroviral Therapy (Protocol No.  
M19-965) \$240,742

Health Resources and Services  
Administration  
Ryan White HIV/AIDS Program Part C  
Outpatient Early Intervention Services  
Program - Continuation \$179,640

Health Resources and Services  
Administration  
Ryan White Part C EIS - Non-Specific  
Supplement \$538,920

HIV-AIDS Bureau  
Ryan White HIV/AIDS Program Part D  
Coordinated HIV Services and Access to  
Research for Women, Infants, Children and  
Youth - Continuation \$512,417

Merck, Sharp & Dohme, Inc.  
Clinical Study to Evaluate Doravirine/  
islatravir  
(Protocol No. MK-8591A) \$1,118,766

**Denece Kesler**  
Bureau of Health Workforce  
Preventive Medicine Residency Program -  
Continuation \$147,368

Bureau of Health Workforce  
Preventive Medicine Residency Program -  
Non-Specific Supplement \$278

Bureau of Health Workforce  
Preventive Medicine Residency Program -  
Non-Specific Supplement \$248,051

Bureau of Health Workforce  
Preventive Medicine Residency Program -  
Non-Specific Supplement 2 \$1,447

Lovelace Biomedical Research  
Institute  
Lovelace Biomedical Research Institute  
- Occupational Health Services -  
Continuation \$25,000

Office of Rural Health Policy  
Radiation Exposure Screening and  
Education Program - Continuation \$231,132

**Christophe Lambert**  
National Institute of Mental Health  
Deriving High-Quality Evidence From  
National Healthcare Databases to Improve  
Suicidality Detection and Treatment  
Outcomes in PTSD -  
Continuation \$650,262

National Institutes of Health  
Illuminating the Druggable Genome Data  
Coordinating Center - Engagement Plan  
With the CFDE \$562,110





**Scott Malec**  
National Library of Medicine  
*Using the Literature to Build Causal Models of Retrospective Observational Data* \$248,670

**Lana Melendres-Groves**  
GBO02, Inc.  
*A Phase 3, Randomized, Double-Blind, Placebo-Controlled Study to Evaluate the Efficacy and Safety of Oral Inhalation of Serlutinib for the Treatment of Pulmonary Arterial Hypertension (Protocol No. GBO02-3101)* \$64,208

Keros Therapeutics, Inc.  
*A Randomized, Phase 2, Double-Blind, Placebo-Controlled Study to Investigate the Safety and Efficacy of KER-012 in Combination With Background Therapy in Adult Participants With Pulmonary Arterial Hypertension (Protocol No. KER-012-A201)* \$160,000

PPD Investigator Services  
*Phase 3 Multicenter Study of Liposomal Treprostinil Inhalation Suspension (L606) in Subjects With Pulmonary Arterial Hypertension Previously Stabilized on Inhaled Treprostinil Products (Protocol No. PBI L606p3) - Supplement* \$644

United Therapeutics Corporation  
*APD811-301: A Study Evaluating the Efficacy and Safety of Ralinepag to Improve Treatment OUTCOMES in PAH Patients - Non-Specific Supplement* \$22,183

University of Pennsylvania  
*Case-Control Study of Methamphetamine in Pulmonary Arterial Hypertension - Continuation* \$26,961

**Kimberly Page**  
Cedars-Sinai Medical Center  
*Collaborative Care Teams for Hospitalized Patients With Opioid Use Disorders: Translating Evidence Into Practice - Continuation* \$196,721

Loyola University Chicago  
*Computational Modeling for HCV Vaccine Trial Design and Optimal Vaccine-Based Combination Intervention - Amendment 3* \$5,249

Loyola University Chicago  
*Computational Modeling for HCV Vaccine Trial Design and Optimal Vaccine-Based Combination Intervention - Continuation* \$47,245

University of Miami  
*CTN-0121: Integrated Care and Treatment for Severe Infectious Diseases and Substance Use Disorders Among Hospitalized Patients* \$508,407

University of Texas Southwestern Medical Center  
*NIDA Clinical Trials Network: Big South/West Node* \$20,260

**Swathi Paleti**  
AbbVie  
*M23-703* \$240,500

Amgen, Inc.  
*Safety and Efficacy of Efavaleukin Alfa in Subjects With Moderately to Severely Active Ulcerative Colitis* \$204,710

**Alisha Parada**  
Lovelace Biomedical & Environmental Research Institute  
*Cognitive Sequelae of Cerebrovascular and Gut Dysfunction in Post-Acute COVID-19 Syndrome* \$16,819

N.M. Department of Health  
*Mobile Homeless Survey* \$120,000

N.M. Department of Health & Human Services  
*Mobile Services for Persons Experiencing Homelessness: High-Impact Demonstration Project* \$250,000

**Douglas Perkins**  
Harvard School of Public Health  
*Fogarty Global Health Training Fellowship Program - Specific Supplement* \$29,497

Harvard School of Public Health  
*Partnership for Global Health Research Training Program* \$14,281

John E. Fogarty International Center for Advanced Study in the Health Sciences  
*Training and Research on Severe Malarial Anemia - Continuation* \$280,420

National Institute of Allergy and Infectious Diseases  
*Temporal Transcriptomics in Hospitalized COVID-19 Patients From Disparately Impacted Ancestral Groups for Therapeutic Discovery - Y3* \$757,176

**Christopher Piromalli**  
Southcentral Foundation  
*Jumpstarting Culturally Informed Advanced Care Planning With ANAI People in Primary Care - Continuation* \$64,919

**David Schade**  
Case Western Reserve University  
*Epidemiology of Diabetes Intervention and Complications - Continuation Year 2023-2024* \$118,770

George Washington University  
*Alzheimer's Disease and Alzheimer's Disease-Related Dementias in Prediabetes and Type 2 Diabetes: The Diabetes Prevention Program Outcomes Study AD/ADRD Project (DPPOS-4) - Continuation* \$368,400

George Washington University  
*Continuation of Glycemia Reduction Approaches in Diabetes: A Comparative Effectiveness Study - Non-Specific Supplement* \$10,000

George Washington University  
*Continuation of Glycemia Reduction Approaches in Diabetes: A Comparative Effectiveness Study - Specific Supplement* \$19,519

**Namita Singh**  
Transplant Genomics, Inc.  
*TRULO Study - Non-Specific Supplement* \$114,115

**Manoocher Soleimani**  
Dialysis Clinic, Inc.  
*The Role of Extracellular Vesicles in Kidney Cystogenesis in Tuberous Sclerosis Complex* \$343,865

U.S. Department of Veterans Affairs  
*IPA - Sharon Barone - Continuation* \$49,199

Veterans Affairs Medical Center  
*IPA - Brooks - Continuation* \$43,932

**Akshay Sood**  
National Institute of General Medical Sciences  
*Effectiveness of Innovative Research Mentor Interventions Among Underrepresented Minority Faculty in the Southwest - Continuation* \$711,113

**Joao Teixeira**  
Talpher Inc  
*CRRT* \$34,823

**Jason Timm**  
Givaudan Flavors Corporation  
*Givaudan Research Agreement - Y16* \$225,000

**Mark Unruh**  
City of Albuquerque  
*Consultant Services for ACS Programs* \$99,590

Dialysis Clinic, Inc.  
*Consultation Services* \$122,200

Dialysis Clinic, Inc.  
*Medical Director Services* \$1,209,000

Genesis HealthCare  
*Physician Services* \$36,000

Hennepin Healthcare Research Institute  
*HOPE CATI - Continuation* \$55,714

Honeywell Corporation  
*Occupational Medical Services - Continuation* \$25,000

Lovelace Biomedical & Environmental Research Institute  
*Occupational Health Consulting Services* \$25,000

National Institute of Diabetes and Digestive and Kidney Diseases  
*American Indian Chronic Renal Insufficiency Cohort Study - Continuation* \$614,646

Tufts Medical Center  
*VideoKD Tufts* \$116,020

Tufts Medical Center  
*VideoKD Tufts - Non-Specific Supplement* \$114,347

University of North Carolina at Chapel Hill  
*Comparative Effectiveness of Two Approaches to Symptom Monitoring in Hemodialysis - Continuation* \$79,853

University of North Carolina at Chapel Hill  
*SmartHD Latinx Supplement* \$152,720

University of Pittsburgh  
*Technology-Assisted Stepped Collaborative Care Intervention to Improve Patient-Centered Outcomes in Hemodialysis Patients - Continuation* \$25,530

University of Washington  
*Randomized ESRD Trial Comparing CBT Alone Versus With Buprenorphine - Continuation* \$111,445

VA Office of Research and Development  
*IPA Inchtvets - Monica Cardona* \$64,880

VA Office of Research and Development  
*IPA Inchtvets - Taryn Roe* \$24,454

Zenith American Solutions, Inc.  
*Occupational & Environmental Health Services* \$25,000

## Molecular Genetics & Microbiology

**Kiran Bhaskar**  
New Mexico VA Health Care System  
*Microglia-Vascular Interactions in Alteration of the Blood-Retinal Barrier in Diabetic Retinopathy* \$5,000

University of Tennessee  
*Validation of a Novel Tau Clearance Mechanism - Year 2* \$203,473

**Bryce Chackerian**  
Henry M. Jackson Foundation  
*Epitope-Based Vaccines for Neisseria Gonorrhoeae - Continuation* \$37,000

National Institute of Allergy and Infectious Diseases  
*Virus-Like Particle-Based Malaria Vaccines Targeting Vulnerable Epitopes in the Circumsporozoite Protein - Non-Specific Supplement* \$61,103

National Institute of Allergy and Infectious Diseases  
*Virus-Like Particle-Based Malaria Vaccines Targeting Vulnerable Epitopes in the Circumsporozoite Protein - Year 2* \$549,926

Tendel Therapies  
*Genetic Adjuvants to Elicit Neutralizing Antibodies Against HIV* \$10,000

**Vojo Deretic**  
National Institute of Allergy and Infectious Diseases  
*Pattern Receptors and Autophagy in Mtb Control in AIDS - Continuation* \$575,399

National Institute of General Medical Sciences  
*Autophagy, Inflammation and Metabolism in Disease Center - Year 7* \$2,270,783

**Kathryn Frieze**  
National Institute of Allergy and Infectious Diseases  
*Investigation of Novel Chlamydia Vaccines in Male Infection Models* \$37,094

National Institute on Drug Abuse  
*Identification and Characterization of Novel Genetic Mechanisms in Alcohol Use Disorder and Excessive Drinking* \$37,094

**Michael Mandell**  
National Institute of Allergy and Infectious Diseases  
*Cellular Responses to Retroviral Capsid Recognition - Continuation Year 4* \$414,823

**Michelle Ozbun**  
National Institute of Allergy and Infectious Diseases  
*Development of a Novel Anti-Viral Treatment for Persistent HPV Disease* \$171,563

Tulane University  
*Development of a Rhesus Macaque Model of Persistent Oral HPV and HIV Co-infection to Study Oropharyngeal Cancer Induction* \$58,354

**Jing Pu**  
National Institute of General Medical Sciences  
*Lysosome-Organelle Interaction in Lipid Metabolism - Continuation* \$343,125

**Jaya Rajaiya**  
National Eye Institute  
*Influence of Dietary Lipids on Gestational Outcomes of Ozone Exposure* \$65,009

National Eye Institute  
*Novel Mechanisms in Adenoviral Ocular Pathogenesis - Non-Specific Supplement* \$59,877

## Neurology

**Daniel Barnett**  
NeuroPace, Inc  
*NAUTILUS - Specific Supplement - Amend #1* \$8,250

**Jonathan Cauchi**  
ALS Association  
*ALS New Mexico* \$30,000

**Masoom Desai**  
Duke University  
*SHINKEI TBI* \$120,000

Marinus Pharmaceuticals, Inc.  
*1042-SE-3003 - RAISE - Specific Supplement* \$25,600

Massachusetts General Hospital  
*Data Generation Projects for the NIH Bridge to Artificial Intelligent Y2 Nce Program (OT2) - MOD 1* \$213,912

University of Arizona  
*ELECTRO-BOOST: Electroencephalography for Cerebral Trauma Recovery and Oxygenation* \$34,683

**Corey Ford**  
Genentech, Inc.  
*MN43964 OLERO - Specific Supplement* \$167,188

Sanofi US Services, Inc.  
*Sanofi - LTS17043* \$1,219,660

Sanofi US Services, Inc.  
*SANOI\_EFC17919* \$1,206,120



**Clotilde Hainline**

Biogen, Inc.  
Biogen Protocol 257MS201 - FUSION \$300,000

Contineum Therapeutics  
VISTA - Pipeline PTI-307-201 \$93,249

**Kenneth Imerman**

University of California, San Francisco  
BVMC3 Project 2 - SWS - Continuation \$3,788

**Surojit Paul**

National Institute on Alcohol Abuse and Alcoholism  
Outcome of Neurological Disorders in Adults Exposed to Moderate Levels of Alcohol in Utero \$411,267

**Sarah Pirio Richardson**

Emory University  
Dystonia Coalition - Emory Subaward FY24 \$164,444

Jazz Pharmaceuticals, Inc.  
JZP385-202 - Specific Supplement \$13,440

The MIND Research Network  
Microbiome-Gut-Brain Dysfunction in Prodromal and Symptomatic Lewy Body Diseases \$101,312

**Gerson Suarez-Cedeno**

Parkinson's Disease Foundation  
PD Gene Registry \$20,000

**Michel Torbey**

National Institute of Neurological Disorders and Stroke  
The Southwestern Stroke Alliance Regional Coordinating Center \$404,296

The Mind Research Network  
Lovlace Biomedical Research Institute - Continuation FY24 \$19,447

University of California, San Francisco  
Brain Vascular Malformation Consortium: Predictors of Clinical Course - Continuation \$123,378

**Neurosciences**

**Jonathan Brigman**

National Institute on Alcohol Abuse and Alcoholism  
Prenatal Alcohol Exposure and Corticostriatal Control of Behavioral Flexibility - Non-Specific Supplement \$33,484

**Andrew Carlson**

National Institute of Neurological Disorders and Stroke  
Clinical Stimulation and Spreading Depolarization \$381,250

**Lee Anna Cunningham**

National Institute on Alcohol Abuse and Alcoholism  
Network Mechanisms of Impaired Adult Hippocampal Neurogenesis in a Mouse Model of Prenatal Alcohol Exposure - Continuation \$340,875

**David Linsenbardt**

National Institute on Alcohol Abuse and Alcoholism  
Repeated Binge Drinking and the Genetic Regulation of Corticostriatal Synchrony - Non-Specific Supplement \$29,501

**Samuel McKenzie**

Virginia Polytechnic Institute  
Functions for CA1 Axo-Axonic and Basket Interneurons in Sharp-Wave Ripple Replay and Spatial Memory \$24,778

**Whitehall Foundation**

Formation of Memory Spaces Through Plasticity of Lateral Inhibition \$300,000

**Nikolaos Mellios**

National Institute of Mental Health  
Unraveling the Biogenesis and Molecular Mechanisms of a Neuronal-Enriched Circular RNA Altered in Psychiatric Disease. - Continuation \$543,266

Washington University School of Medicine in St. Louis  
Multimodal Characterization of the Role of Circular RNAs in Alzheimer's Disease - Continuation \$102,901

**Shahani Noor**

National Institute on Alcohol Abuse and Alcoholism  
Prenatal Alcohol Exposure Generates Vulnerability to the Proinflammatory Effects of Morphine and Adverse Neuroimmune Consequences - Continuation \$338,927

National Institute on Alcohol Abuse and Alcoholism  
Prenatal Alcohol Exposure Generates Vulnerability to the Proinflammatory Effects of Morphine and Adverse Neuroimmune Consequences - Non-Specific Supplement \$37,659

**Nora Perrone-Bizzozero**

University of South Carolina  
Destabilization of Axonal MRNAs by KHSRP Controls Axon Regeneration - Continuation \$29,403

**Daniel Savage**

National Institute on Alcohol Abuse and Alcoholism  
Fetal Ethanol-Induced Behavioral Deficits: Mechanisms, Diagnoses and Intervention - Continuation \$1,482,336

**Bill Shuttleworth**

National Institute of Neurological Disorders and Stroke  
Non-Canonical Mechanisms of Excitotoxicity - Continuation \$39,838

National Institute of Neurological Disorders and Stroke  
Non-Canonical Mechanisms of Excitotoxicity - Non-Specific Supplement \$1,280

New Mexico State University  
New Mexico IDEeA Networks of Biomedical Research Excellence \$209,909

New Mexico State University  
Ryman-New Mexico IDEeA Networks of Biomedical Research Excellence - Continuation \$26,186

University of Utah  
Spreading Depolarization in the Network Dysfunction Leading to Post-Traumatic Headache - Continuation \$115,500

**Elif Tunc-Ozcan**

National Institute of Mental Health  
Neural Activity and Circuitry-Mediated Hippocampal Stress Responses \$249,000

**Carlos Valenzuela**

National Institute on Alcohol Abuse and Alcoholism  
Alcohol and Developing Neuronal Circuits - Continuation \$521,566

National Institute on Alcohol Abuse and Alcoholism  
Developmental Alcohol Exposure and Cerebro-Cerebellar Circuits - Continuation \$162,984

National Institute on Alcohol Abuse and Alcoholism  
Developmental Alcohol Exposure and Cerebro-Cerebellar Circuits - Non-Specific Supplement \$18,110

**Tou Yia Vue**

National Institute of Neurological Disorders and Stroke  
Transcriptional Control of OPC Fate Specification and Homing to Gray Matter and White Matter in the CNS - Continuation \$337,110

National Institute of Neurological Disorders and Stroke  
Transcriptional Control of OPC Fate Specification and Homing to Gray Matter and White Matter in the CNS - Non-Specific Supplement \$26,219

**Jason Weick**

National Institute of Neurological Disorders and Stroke  
Molecular Mechanisms of Excitatory Postsynaptic Diversity - Continuation \$340,875

National Institute on Aging  
Regulation of Sortilin-1 by Neuron-Specific Genes; Implications for AD and FTD \$419,375

National Institutes of Health  
Molecular Mechanisms of Excitatory Postsynaptic Diversity - Non-Specific Supplement \$26,513

**Obstetrics & Gynecology**

**Eve Espey**

Blue Cross Blue Shield of New Mexico  
BCBS OBGYN Resident Scholarship for Rural Area \$197,341

New Mexico Sonographics  
MFM Services/Ultrasound Readings - Continuation \$25,000

Planned Parenthood of the Rocky Mountains  
NM Reproductive Health Success Project \$141,083

Planned Parenthood of the Rocky Mountains  
OB/GYN Services & Medical Directorship - Continuation \$25,000

St. Vincent Regional Medical Center  
OB/GYN Coverage- Continuation \$25,000

**Peter Jeppson**

Care New England  
BEST Trial - PCORI - Specific Supplement \$94,999

Women and Infants' Hospital of Rhode Island  
BEST Trial - PCORI - Continuation \$282,571

**Kate Meriwether**

RBI Medical  
RBI Human Pilot \$31,471

RTI International  
PFDN Capitation - Continuation \$3,919

RTI International  
PFDN Capitation - Non-Specific Supplement \$15,055

**Amber Truehart**

The Lalor Foundation  
Lalor Foundation Grant \$39,930

**Christina Yarrington**

Boston University  
Postpartum Blood Pressure Monitoring Outcomes \$56,065

**Office of the Medical Investigator**

**Lauren Dvorscak**

U.S. Department of Justice  
Expert Witness - U.S. v. Josiah Alan Smith \$7,394

**Heather Edgar**

U.S. Department of Justice  
Cold Case Resolutions for the State of New Mexico \$999,558

U.S. Department of Justice  
Expert Witness - H. Edgar - U.S. v. Yellowhorse \$2,923

**Heather Jarrell**

Bureau of Indian Affairs  
BIA Autopsy Services - Continuation FY24 \$65,014

Memorial Medical Center  
Autopsy Services - Memorial Medical Center - Continuation \$5,000

N.M. Crime Victims Reparation Commission  
Victims of Crime Act Victim Assistance FY 2024 - Continuation \$99,441

N.M. Public Safety Department  
FY23 Paul Coverdell Forensic Science Improvement Grants Program - Formula \$65,669

U.S. Department of Justice  
Expert Witness - H. Jarrell - U.S. v. Halen Tsosie \$1,723

U.S. Department of Justice  
Expert Witness - USA v. Malcom Torres \$11,354

U.S. Department of Veterans Affairs  
VA Autopsy Services - Continuation \$59,266

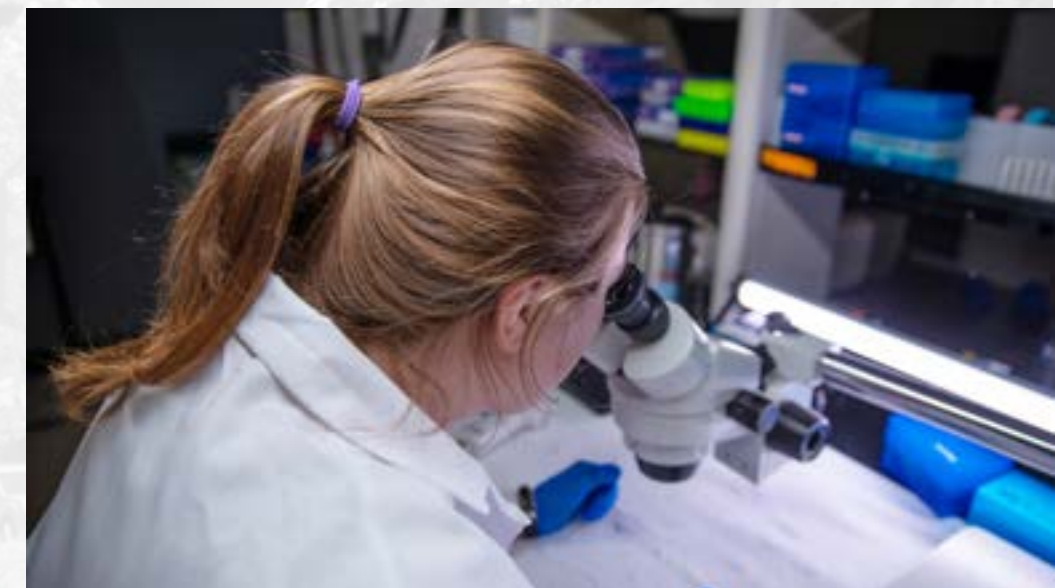
UNM Sandoval Regional Medical Center  
MOA: OMI - SRMC FY24 \$45,000

**Aidan Kerr**

U.S. Department of Justice  
Expert Witness - Aidan Kerr - U.S. v. Moreno OMI# 2021-07189 \$7,806

U.S. Department of Justice  
Expert Witness - U.S. v. Labar Tsethikai \$12,145

U.S. Department of Justice  
USA v. Marc Clark. OMI# 2021-08249 \$6,423



**Clarissa Krinsky**  
U.S. Department of Justice  
Expert Witness -  
U.S. v. Jerrold Chavarria \$5,421

**Sarah Lathrop**  
CDC Foundation  
Medicolegal Death Investigation Novel  
Data Modernization Initiatives \$250,000

N.M. Department of Health  
HBCD Peer Navigator \$300,000

N.M. Department of Health  
Increase Timeliness of Fatal  
Opioid Overdose \$521,586

U.S. Consumer Product Safety  
Commission  
MECAP Reports \$1,008

U.S. Consumer Product Safety  
Commission  
MECAP Reports - Non-Specific  
Supplement \$504

**Sophia Rodriguez**  
U.S. Department of Justice  
Expert Witness - U.S. v. Christopher  
Acevedo \$5,425

**Daniel Gallego Umana**  
CVPath Institute  
Improving Understanding and Diagnosis of  
Post-Acute Sequelae of the SARS-CoV-2  
Infection on the Heart: a Cardiac Magnetic  
Resonance and Autopsy Study \$42,322

New York University Grossman  
School of Medicine  
The SARS-CoV-2 Autopsy Cohort Post  
Acute Sequelae of COVID Study - Phase  
II - Continuation \$275,794

U.S. Department of Justice  
Expert Witness- D. Gallego - U.S. v.  
Maylene John \$2,970

### Ophthalmology & Visual Sciences

**James Chodos**  
Eye Associates of New Mexico  
Neuro-Ophthalmology Services -  
Continuation \$215,405

Massachusetts Eye and Ear  
Infirmary  
Transitioning the Minimally Invasive  
Artificial Cornea Mi-KPro From Bench to  
Bedside \$31,886

National Eye Institute  
Immunopathogenesis of Adenovirus  
Keratitis - Continuation \$318,602

National Eye Institute  
Immunopathogenesis of Adenovirus  
Keratitis - Non-Specific Supplement \$5,178

University of California, San  
Francisco  
SCORPIO - Continuation \$20,379

University of California, San  
Francisco  
SCORPIO - Continuation 2 \$20,409

### Orthopaedics & Rehabilitation

**Deana Mercer**  
Axogen Corporation  
COVERED \$40,832

**Nathan Morrell**  
UNM Rainforest Innovations  
Prosthetic Implant for CMC  
Arthritis \$25,000

**Dustin Richter**  
Arthroscopy Association of North  
America  
2025 AOSSM & Enovis  
Fellowship Grant \$3,950

Stryker Orthopaedics &  
Rehabilitation  
Consulting Agreement \$28,000

University of Pittsburgh  
Surgical Timing and Rehabilitation  
for Multiple Ligament Knee Injuries: A  
Multicenter Integrated Clinical Trial -  
Continuation \$4,022

University of Pittsburgh  
Surgical Timing and Rehabilitation  
for Multiple Ligament Knee Injuries: A  
Multicenter Integrated Clinical Trial -  
Specific Supplement \$1,189

University of Pittsburgh  
Surgical Timing and Rehabilitation  
for Multiple Ligament Knee Injuries: A  
Multicenter Integrated Clinical Trial -  
Specific Supplement \$3,165

University of Pittsburgh  
Surgical Timing and Rehabilitation  
for Multiple Ligament Knee Injuries: A  
Multicenter Integrated Clinical Trial -  
Specific Supplement \$2,825

**Christina Salas**  
emTruth Inc.  
EmTRUTH \$50,000

UNM Rainforest Innovations  
L.E.G.A.R.D. \$25,000

**Robert Schenck**  
University of New Mexico  
Healthcare Services for Student Athletes  
(Lobo Clinic) \$391,812

**Selina Silva**  
Ann & Robert H. Lurie Children's  
Hospital of Chicago  
Infrastructure for Musculoskeletal Pediatric  
Acute Care Clinical Trials \$4,540

**Gehron Treme**  
Arca Foundation  
Medical Director Services \$25,000

Balanced Physical Therapy and  
Wellness LLC  
Physical Therapists Evaluate and Treat  
Patients - Continuation \$25,000

Balanced Physical Therapy and  
Wellness LLC  
Physical Therapists Services-  
Continuation \$25,000

### Pathology

**Elaine Bearer**  
National Institute of Neurological  
Disorders and Stroke  
Mapping and Modulating  
Brain States \$39,403

**Tione Buranda**  
Association of Public Health  
Laboratories  
Subject Matter Expert- DEIA \$35,280

**Jennifer Gillette**  
American Heart Association  
ABCA1-Dependent Cholesterol Efflux  
Can Regulate Can Regulate Cholesterol  
Content in Endothelial Cells \$6,000

American Heart Association  
Acid-Sensing Ion Channel in Pulmonary  
Hypertension \$6,000

American Heart Association  
Unveiling the Contribution of Extregs  
to Hypoxic Pulmonary Hypertension  
Pathogenesis \$6,000

National Heart, Lung, and Blood  
Institute  
Functional Role of Tetraspanin CD82 in  
Hematopoietic Stem Cell Interactions -  
Continuation \$376,845

**Nancy Joste**  
Southwest Gastroenterology  
Associates, P.C  
Medical Director &  
Physician Services \$25,000

TriCore Reference Laboratories  
Medical Director/Scientific Director  
Services - Continuation \$2,194,059

TriCore Reference Laboratories  
Medical Director/Scientific Director  
Services - Continuation \$2,124,314

UNM Hospital  
Pathology Services \$572,993

**Diane Lidke**  
Genmab  
Dissecting the Mechanisms of Action for  
Hexabody-Driven DR5-Induced Cell Death  
- Continuation \$181,155

Los Alamos National Laboratory  
System Dynamics of PD-1 Signaling in T  
Cells - Mod 1 \$17,054

Los Alamos National Laboratory  
System Dynamics of PD-1 Signaling in T  
Cells - Mod 2 \$165,503

National Institute of General  
Medical Sciences  
Imaging the Early Events in Membrane  
Receptor Signaling \$465,354

Yale University  
Understanding How Receptor Tyrosine  
Kinase Activation Dynamics Specify  
Proliferative Cellular Responses -  
Amendment 4 \$189,315

Yale University  
Understanding How Receptor Tyrosine  
Kinase Activation Dynamics Specify  
Proliferative Cellular Responses -  
Continuation \$195,293

**Dennis McCance**  
University of Virginia  
Biospecimen Procurement and Tissue  
Microarray Manufacture for the CHTN -  
Continuation \$128,337

University of Virginia  
Biospecimen Procurement and Tissue  
Microarray Manufacture for the CHTN -  
Non-Specific Supplement \$21,566

**Aysha Mubeen**  
TriCore Reference Laboratories  
TO#43 Ventana 2024 MET 25% &  
50% Studies \$39,820

**Samuel Reynolds**  
TriCore Reference Laboratories  
TO#44 Ventana 2024 MET 25% &  
50% Studies \$39,820

**Larry Sklar**  
Boston Children's Hospital  
Compounds That Block a Novel Candida  
Albicans Target - Continuation \$31,118

**Angela Wandinger-Ness**  
National Institute of General  
Medical Sciences  
Academic Science Education and Research  
Training - Continuation \$1,045,992

### Pediatrics

**Shirley Abraham**  
American Thrombosis and  
Hemostasis Network  
American Thrombosis and Hemostasis  
Network Round 15 - Continuation \$12,500

Hemophilia Alliance Foundation  
Hemophilia Treatment Center - HAF  
Submission \$8,000

Oregon Health & Science University  
ATHN\_CDC\_Public Health Surveillance  
for the Prevention of Complications of  
Bleeding Disorders - Continuation \$30,000

Oregon Health & Science University  
Regional Hemophilia Network - Mountain  
States - Non-Specific Supplement \$221,589

Oregon Health & Science University  
Regional Hemophilia Network - Mountain  
States - Y3 Continuation \$50,000

**Razan Alkhouri**  
Ardelyx  
TEN-01-304 \$72,373

**Suzanne Burns**  
University of Wisconsin-Milwaukee  
Building Accessibility in the  
Community \$25,977

University of Wisconsin-Milwaukee  
Opening the Door for Accessibility Ratings  
in the Community: Stage of  
Adoption \$18,922

**Glenda Canaca**  
N.M. Human Services Department  
Social Marketing 23-24 \$635,333

**Theresa Cruz**  
N.M. Children, Youth & Families  
Department  
Safe Sleep Focus Groups 24 \$127,500

N.M. Human Services Department  
SNAP-ED Evaluation 23-24 \$308,921

Presbyterian Healthcare Services  
Chair Care Evaluation \$25,000

Presbyterian Healthcare Services  
DPP Evaluation \$100,000

Presbyterian Healthcare Services  
REACH Evaluation 23-24 \$112,000

**Sally Davis**  
N.M. Department of Health  
Implementing Evidence-Based  
Recommendations in Community  
Projects 23-24 \$42,500

**Darrell Dinwiddie**  
Arkansas Children's Research  
Institute  
Pediatric Acute Respiratory  
Infection Study \$572,169

Sandia National Laboratories  
COVID-19 Multiplexed Virus Detection  
Via Metal-Organic Framework-Based  
Biosensors - Continuation \$98,800

**Timothy Dionne**  
Bureau of Health Professions  
HRSA Scholarship for Disadvantaged  
Students - Non-Specific  
Supplement \$25,000

**Kevin Estes**  
Region IX Education Cooperative  
PED REA 23-24 \$64,000

**Janell Fuller**  
Eunice Kennedy Shriver National  
Institute of Child Health and  
Human Development  
Eunice Kennedy Shriver NICHD  
Cooperative Multicenter Neonatal  
Research Network - Continuation \$296,913

Eunice Kennedy Shriver National  
Institute of Child Health and  
Human Development  
Eunice Kennedy Shriver NICHD  
Cooperative Multicenter Neonatal  
Research Network - Non-Specific  
Supplement \$32,990

**Rebecca Girardet**  
N.M. Crime Victim Reparation  
Commission  
VOCA FY24 \$54,524

W.K. Kellogg Foundation  
*Measuring Child Maltreatment Incidence  
and Community Protective Factors in  
New Mexico* \$300,000

**Sandra Heimerl**  
American Academy of Pediatrics  
*Act Early Ambassador - Specific  
Supplement* \$6,000

N.M. Developmental Disabilities  
Planning Council  
*NM LEND Legislative Advocacy - Partners  
in Policymaking* \$2,500

**Mary Hill**  
New Mexico State University  
*N.M. Agrability - Assistive Technology  
Program for Farmers With Disabilities -  
Continuation* \$37,623

**Michele Hutchison**  
Outcome Sciences, Inc.  
*NN8640-4978* \$15,000

**Rebecca Kilburn**  
Albuquerque Public Schools  
*APS 1807 23-24* \$120,000

Imagine New Mexico  
*Imagine New Mexico* \$125,000

Institute of Education Sciences  
*Tipsytext - Continuation Year  
2/5* \$921,374

N.M. Department of Health  
*Youth Risk and Resiliency Survey* \$50,000

N.M. Department of Health  
*Youth Risk and Resiliency Survey -  
Specific Supplement* \$225,751

N.M. Public Education Department  
*Healthy Schools Evaluation  
YRRS 24-25* \$53,984

N.M. Public Education Department  
*PED Evaluation 23-24* \$39,000

N.M. Public Education Department  
*PED Evaluation 23-24 -  
Specific Supplement* \$25,000

Santa Fe County  
*CONNECT Evaluation* \$149,695

**Hellen Ko**  
Infant Bacterial Therapeutics AB  
*IBP-9414-020* \$32,000

**Alberta Kong**  
Aleut-Odle Training and  
Development  
*Providing Medical Services  
at ABQ Job Corps* \$111,136

Brindle Foundation  
*Optimizing Care for Neonatal Opioid  
Withdrawal Syndrome in  
Rural N.M.* \$25,000

Falling Colors Corporation  
*School-Based Health  
Center Services* \$673,000

**Jean Lowe**  
Research Triangle Institute  
*Darbe-KIDS* \$94,179

Research Triangle Institute  
*School Age Follow-Up for the  
Darbeopetin Trial* \$94,179

**Peggy MacLean**  
Falling Colors Corporation  
*ECECD FAN Training* \$32,200

Falling Colors Corporation  
*FAN Home Visiting Training* \$59,150

Falling Colors Corporation  
*HATCH (Level 2 NICU)* \$410,400

Santa Fe Community College  
*First-Born Training* \$32,200

**Michael Marble**  
N.M. Department of Health  
*DOH CMS Newborn Screening -  
Specific Supplement* \$170,000

**Sofia Markee**  
Abbott Laboratories Inc.  
*Abbott Laboratories AL46* \$11,482

Rekovar Inc.  
*Neonatal Abstinence Syndrome Data  
Collection and Monitoring* \$170,289

**Jessie Maxwell**  
National Institute on Alcohol Abuse  
and Alcoholism  
*Poison Center Stabilization and  
Enhancement Program* \$193,699

**Marcia Moriarta**  
Administration for Community  
Living  
*University Center for Excellence in  
Developmental Disabilities -  
Continuation* \$620,675

Falling Colors Corporation  
*IMH CPP* \$62,800

Falling Colors Corporation  
*IMH CPP, Manuals, Training and  
Consultation* \$48,200

Falling Colors Corporation  
*NM ECECD Home Visiting  
Training* \$1,635,321

Falling Colors Corporation  
*Nurse-Family Partnership* \$974,637

Falling Colors Corporation  
*Parents As Teachers* \$676,065

N.M. Department of Health  
*DDSD Community Inclusion* \$100,000

N.M. Department of Health  
*DDSD Partners for Employment* \$562,800

N.M. Department of Health  
*DDSD Partners for Employment Transition  
Project* \$50,000

N.M. Department of Health  
*DOH Autism Programs* \$3,749,744

N.M. Department of Health  
*MFP Contract* \$106,000

N.M. Department of Health  
*New Mexico Waiver Training Hub* \$253,764

N.M. Department of Health &  
Human Services  
*New Mexico SAFE Program* \$105,000

N.M. Developmental Disabilities  
Planning Council  
*DDC Information Network* \$160,000

N.M. Early Childhood Education &  
Care Department  
*Early Childhood Evaluation Program (SGF)  
and Early Childhood Evaluation Program  
Part B* \$1,282,458

N.M. Early Childhood Education &  
Care Department  
*Early Childhood Network* \$611,742

N.M. Early Childhood Education &  
Care Department  
*Early Childhood Network -  
Continuation* \$211,000

N.M. Early Childhood Education &  
Care Department  
*FIT FOCUS - Gratitude Payment* \$125,000

**Martha Muller**  
Cystic Fibrosis Foundation  
*CFF Pharmacy Services -  
Continuation* \$53,045

Cystic Fibrosis Foundation  
*Cystic Fibrosis Center of New Mexico - CF  
Registry* \$87,010

**Dawn (Walstrom) Novak**  
N.M. Early Childhood Education &  
Care Department  
*Developmental Care Continuity Program -  
Continuation - Non-Specific  
Supplement* \$85,000

**Loretta Cordova de Ortega**  
Children's Hospital Colorado  
*Pediatric Electrophysiology Services  
Pediatric Cardiology Service* \$25,000

Presbyterian Healthcare Services  
*Pediatric Interventional Cardiology  
Medical Director - Continuation* \$25,000

Presbyterian Healthcare Services  
*Pediatric Nephrology Medical Director  
Services - Continuation* \$3,952

Presbyterian Healthcare Services  
*Pediatric Services - Continuation* \$25,000

**Patricia Osbourn**  
Bloomfield Public Schools  
*Bloomfield Consultations* \$16,742

Bureau of Indian Education  
*Havasupai Elementary Consultation -  
Continuation* \$169,660

Carlsbad Municipal Schools  
*Carlsbad Consultations* \$8,922

Central Consolidated School  
District  
*Central Consolidated  
Consultations* \$43,207

Falling Colors Corporation  
*Peer Support and Referrals* \$99,986

Mescalero Apache Schools  
*Mescalero Consultations* \$13,192

N.M. Department of Health  
*Mi Via Waiver Provider Program* \$1,575,422

N.M. Developmental Disabilities  
Planning Council  
*Short Courses for Teaching Gene-  
Environment Interactions With a Focus on  
Environmental Justice  
Communities* \$10,000

N.M. Developmental Disabilities  
Planning Council  
*UNM Partners in Policymaking* \$52,000

N.M. Early Childhood Education &  
Care Department  
*Autism & Early Intervention* \$100,000

N.M. Public Education Department  
*SET PED* \$486,200

Pecos Independent Schools  
*Pecos Consultations* \$12,263

Region IX Education Cooperative  
*Region IX Education Cooperative* \$179,300

Rio Rancho Public Schools  
*Rio Rancho Consultations* \$109,892

Ruidoso Municipal Schools  
*Ruidoso Consultations* \$7,804

U.S. Department of Education  
*Project for N.M. Children Who Are  
Deaf-Blind* \$117,970

**Tim Ozechowski**  
Partnership to End Addiction  
*Adolescent-Only SBI Versus Family-Based  
SBI in Primary Care for Adolescent  
Alcohol Use* \$15,094

Partnership to End Addiction  
*Adolescent-Only SBI Versus Family-Based  
SBI in Primary Care for Adolescent  
Alcohol Use - Continuation* \$15,094

**Heather Pratt-Chavez**  
Administration for Children and  
Families  
*FOCUS Program Federal  
Expansion* \$2,000,000

**Mary Ramos**  
Pacific Institute for Research &  
Evaluation  
*Enhancing Structural Competency in  
SBHC to Address LGBTQ Adolescent -  
Continuation* \$78,878

**Amy Staples**  
North American Pediatric Renal  
Transplant Coop Study  
*NAPRTCS Registry - CfDNA  
Amendment* \$2,250

**Jessica Valdez**  
Dana Farber Cancer Institute  
*Disparities in Clinical Trial Enrollment  
Among Adolescents and Young Adults  
With Cancer* \$57,107

Public Health Institute  
*Children's Oncology Group/Public Health  
Institute Work Order -  
AR62272 FY24* \$7,500

Public Health Institute  
*COG PHI Work Order AR67215* \$48,318

St. Baldrick's Foundation  
*St. Baldrick's Grant Submission  
FY24 Continuation* \$50,000

**Monique Vallabhan**  
Brindle Foundation  
*Advancing Hepatitis C Detection and  
Treatment in Northern N.M.  
Children* \$30,000

**Jennifer Vickers**  
N.M. Department of Health  
*Continuum of Care MAIN* \$961,200

N.M. Department of Health  
*CORE* \$1,554,483

N.M. Department of Health  
*Mortality Review* \$168,832

**Craig Wong**  
Nationwide Children's Hospital  
*A CureGN II - Continuation* \$15,500

The Children's Mercy Hospital  
*CKiD V* \$19,159

**Nan Zeng**  
Colorado State University  
*Obesity Prevention Targets for Down  
Syndrome - Continuation Yr2* \$23,780

N.M. Human Services Department  
*CHILE Plus - Continuation 23-24* \$463,825

## Psychiatry & Behavioral Sciences

**Christopher Abbott**  
National Institute of Mental Health  
*2/4 Deciphering Mechanisms of ECT  
Outcomes and Adverse Effects  
(DECODE)* \$525,248

National Institute of Mental Health  
*Electroconvulsive Therapy Amplitude  
Titration for Improved Clinical Outcomes  
in Late-Life Depression* \$619,767

National Institute of Mental Health  
*Electroconvulsive Therapy Amplitude  
Titration for Improved Clinical Outcomes  
in Late-Life Depression* \$68,862



**Deborah Altschul**  
N.M. Behavioral Health Collaborative  
Everyone Deserves \$211,000

San Felipe Pueblo  
San Felipe KEVA III - Katishtya Eh-wahs Valued Always III \$500,000

**David Arciniegas**  
Lovelace Biomedical & Environmental Research Institute  
A Longitudinal Study of Traumatic Brain Injury in a High-Risk Population \$9,893

University of Colorado  
Emotional Dyscontrol in Veterans with Extended History of Mild Traumatic Brain Injury and Upright Balance Control and Auditory Sensory Processing Contributions \$11,442

**Caroline Bonham**  
Albuquerque Area Indian Health Service  
IHS-Albuquerque Area Office Substance Abuse & Mental Health Clinical & Community Education Training & Outreach Services - Option Yr4 \$99,000

Falling Colors Corporation  
Forensic - BHSD FY24 \$90,000

Indian Health Service  
IHS Tele-Behavioral Health Center of Excellence \$650,000

Indian Health Service  
IHS Tele-behavioral Health, Training & Consultation - Modification 20 \$106,491

Indian Health Service  
IHS Tele-Behavioral Health, Training & Consultation - Modification 25 \$42,415

N.M. Indian Affairs Department  
NM IAD FY24 Suicide Prevention Initiative \$55,000

**Juan Bustillo**  
Boehringer Ingelheim Pharmaceuticals, Inc.  
CONNEX 2 \$366,036

The Mind Research Network  
Phase III COBRE \$174,995

**Richard Campbell**  
The Mind Research Network  
The Impact of Diffuse Mild Brain Injury on Clinical Outcomes in Children \$7,919

**Thomas Chavez**  
Taos Pueblo Division of Health and Community Services  
Taos Pueblo Tiwa Babies II \$88,850

**Annette Crisanti**  
City of Albuquerque  
Albuquerque Police Department Crisis Intervention Team Extension for Community Healthcare Outcomes Coordination - FY24 \$99,999

N.M. Behavioral Health Collaborative  
Opening Doors for Homeless - FY24 - Opening Doors through Services and Supports for Homeless Individuals with Serious Mental Illness or Co-Occurring Disorder \$118,720

**Rebecca Ezechukwu**  
Center for Substance Abuse Treatment  
Addressing Childhood Trauma through Intervention, Outreach, and Networking III \$400,000

Center for Substance Abuse Treatment  
Addressing Childhood Trauma through Intervention, Outreach, and Networking III \$400,000

**Brian Isakson**  
N.M. Children, Youth & Families Department  
Healthy Transitions Expansion Program Behavioral Health Services Evaluation Supplement \$340,000

**Tyler Kincaid**  
N.M. Behavioral Health Collaborative  
Certified Community Behavioral Health Clinic Extension \$250,000

N.M. Behavioral Health Collaborative  
Certified Community Behavioral Health Clinic Planning \$200,000

N.M. Children, Youth & Families Department  
Multi-Systemic Therapy Data Reporting Initiative - FY24 \$126,800

**David Lardier**  
Montclair State University  
PFS - Paterson (N.J.) / Montclair State University Strategic Prevention Framework - Partnerships for Success Initiative - Year 4 of 5 \$21,000

Montclair State University  
Prevention Navigator - The Paterson (N.J.) / Montclair State University Substance Misuse, HIV and Viral Hepatitis Prevention Navigator Initiative for Racial/Ethnic Minorities Ages 13-24 - Year 3 of 5 \$25,000

N.M. Public Education Department  
N.M. Project AWARE Training Supplement - New Mexico Project Advancing Wellness and Resiliency in Education Training Supplement \$9,200

**Christopher Morris**  
Falling Colors Corporation  
Systems of Care III \$277,306

**Jennifer Perillo**  
Falling Colors Corporation  
Comprehensive Opioid, Stimulants, Substance Abuse Site-Based Program/Law Enforcement Assisted Diversion (BHSD-funded) \$83,250

Falling Colors Corporation  
CRAFT Implementation - Community Reinforcement & Family Training Impementation (State-Funded) \$85,000

N.M. Behavioral Health Collaborative  
Comprehensive Opioid, Stimulants, Substance Abuse Site-Based Program/Law Enforcement Assisted Diversion - Final 3 Months of Federal Funding \$27,750

**Davin Quinn**  
The Mind Research Network  
A Perspective Observational Study on Therapeutic and Adverse Affects of Medical Cannabis for Chronic Traumatic Brain Injury \$21,834

U.S. Army Medical Research Acquisition Activity  
Multimodal Image Analysis and Guidance of Neuromodulation for Trauma-Related Symptoms \$2,479,978

**Julie Salvador**  
Falling Colors Corporation  
New Mexico State Opioid Response 3 \$1,476,531

Falling Colors Corporation  
New Mexico State Opioid Response 3 - July-Sept 2023 of Federal Year 1 \$403,977

Falling Colors Corporation  
Workforce Clinical Supervision Training \$75,000

N.M. Behavioral Health Collaborative  
ECHO for Clinical Supervision - Extension for Community Healthcare Outcomes for Clinical Supervision \$155,700

**Mauricio Tohen**  
McLean Hospital  
UNM/McLean First Episode Study \$46,140

**Ann Waldorf**  
Substance Abuse and Mental Health Services Administration  
UNM-PCSS NP & Expansion - UNM Provider's Clinical Support System Nurse Practitioners & Expansion \$150,000

**Daniel Williams**  
Falling Colors Corporation  
Assertive Community Treatment - 7-month Continuation \$150,000

N.M. Behavioral Health Collaborative  
Assertive Community Treatment - Final 3 Months \$34,202

**Deidre Yellowhair**  
Center for Substance Abuse Treatment  
Trauma Informed to Build Resilient, Indigenous, Balanced Communities Enhanced With Strength - Yr 4 \$1,200,000

## Radiology

**Gary Mlady**  
Indian Health Service  
Medical Physicist- Albuquerque Indian Health Service - Continuation \$7,000

**Linda Schenkel**  
ABQ Orthodontics  
Qualified Medical Physicists Services \$25,000

**Reed Selwyn**  
ABQ Orthodontics  
Qualified Medical Physicists Services - Continuation \$25,000

Central New Mexico Community College Radiologic Technology Program  
Qualified Medical Physicists Services \$1,000

City of Aztec  
Qualified Medical Physicists Services \$25,000

Four Corners ASC  
Qualified Medical Physicists Services - Continuation \$25,000

High Mesa Dental Arts, PC  
Qualified Medical Physicist Services \$25,000

Interventional Pain Associates  
Qualified Medical Physicists Services \$25,000

John F. Crisler, DDS, PA  
Qualified Medical Physicists Services \$25,000

Lovelace Health System  
Qualified Medical Physicists Services - Continuation \$25,000

N.M. Department of Health  
Clinical Services for BCC Program Project \$89,675

N.M. Department of Health  
Clinical Services for BCC Program Project - Continuation \$126,941

N.M. Department of Health  
Provide Clinical Services for Enrolled in the BCC Program \$126,941

New Mexico Center for Pain & Wellness  
Qualified Medical Physicists Services \$25,000

Rollin' Paws Mobile Veterinary Service  
Qualified Medical Physicists Services \$25,000

Sandia Pain Center LLC  
Qualified Medical Physicists Services \$25,000

Santo Domingo Health Center  
Qualified Medical Physicist Services - Continuation \$25,000

Signature Dental Partners Holdings, LLC  
Qualified Medical Physicists Services \$25,000

U.S. Department of Veterans Affairs  
Provide Radiological and Nuclear Medicine Diagnostic and Therapy Services for NMVAHCS \$406,381

X-Ray Associates of New Mexico  
Qualified Medical Physicist Services - Continuation \$25,000

**Henrik Ullman**  
Foundation of the American Society of Neuroradiology  
Stroke Imaging Biomarkers Using Cerebral Catheter Angiography \$28,356

## Student Services

**Sheila Hickey**  
Health Resources and Services Administration  
School of Medicine MD Scholarship for Disadvantaged Students - Non-Specific Supplement \$25,000

**Teresa Vigil-Baca**  
Health Resources and Services Administration  
School of Medicine MD Scholarship for Disadvantaged Students - Continuation \$650,000

Health Resources and Services Administration  
School of Medicine MD Scholarship for Disadvantaged Students - Continuation \$650,000

## Surgery

**Ross Clark**  
Exhalix, LLC  
HEALS Phase II: An Active Hydrogen Sulfide Delivery Technique for Accelerated, Effective Wound Healing \$281,172

**Ryan Orosco**  
Alume Biosciences, Inc.  
Clinical Trial - Alume Biosciences Loupes Study H&N \$91,021





## UNM HOSPITAL

### Eve Espey

N.M. Prenatal Medical Services  
DOH Prenatal Medical Services Project  
FY24 \$720,000

### Arthur Kaufman

UNM Hospital  
Case Management Services for Bernalillo  
County \$300,000

### Rodney McNease

Bernalillo County  
Behavioral Health Services  
FY24 \$2,000,000

### Robert Perry

N.M. Department of Health  
DOH 2024 New Mexico Medical Reserve  
Corps FY24 UNM 030095 \$85,000

N.M. Department of Health  
DOH 2024 New Mexico Medical Reserve  
Corps FY24 UNM 030095 A1. \$23,925

## UNM MEDICAL GROUP, INC.

### Elizabeth Kocher

Albuquerque Healthcare for the  
Homeless, Inc.  
Locum Tenens Physician Services \$25,000

Alma Family Medicine  
Locum Tenens Physician Services \$25,000

Cañoncito Band of Navajos Health  
Center  
Locum Tenens Services \$25,000

El Centro Family Health  
Locum Tenens Physician Services \$25,000

El Centro Family Health  
Locum Tenens Physician Services \$25,000

El Pueblo Health Service  
Locum Tenens Physician Services \$25,000

La Clinica del Pueblo de Rio Arriba  
Locum Tenens Physician Services \$25,000

Laguna Healthcare Corporation  
Locum Tenens Services \$25,000

Pueblo of Sandia  
Locum Tenens Physician Services \$25,000

Ramah Navajo School Board, Inc,  
dba Pine Hill Health Center  
Locum Tenens Physician Services \$25,000

Rehoboth McKinley Christian  
Health Care Services  
Locum Tenens Physician Services \$25,000

Santo Domingo Health Center  
Locum Tenens Physician Services \$25,000

### Gary Mlady

First Choice Community  
Healthcare  
Locum Tenens Physician Services \$25,000

La Familia Medical Center  
Locum Tenens Physician Services \$25,000

Miners Colfax Medical Center  
Locum Tenens Physician Services -  
Continuation \$25,000

Miners Colfax Medical Center  
Locum Tenens Physician Services -  
Continuation \$25,000

At The University of New Mexico, research is the heartbeat of progress, driving innovation, transforming education and shaping the future.

Your philanthropic spirit can spark groundbreaking research addressing societal challenges, from improving health care access to reducing health disparities and advancing knowledge for New Mexico and beyond.

Private gifts allow us to explore early-stage ideas that might not qualify for traditional funding sources. This work, made possible by your support, lays the foundation for discoveries that change lives. It can turn a dormant idea into a game-changing innovation.

Join UNM and the UNM Foundation, and become part of a team that propels progress, fosters talent and uplifts New Mexico.

**Visit us at [www.unmfund.org](http://www.unmfund.org)**

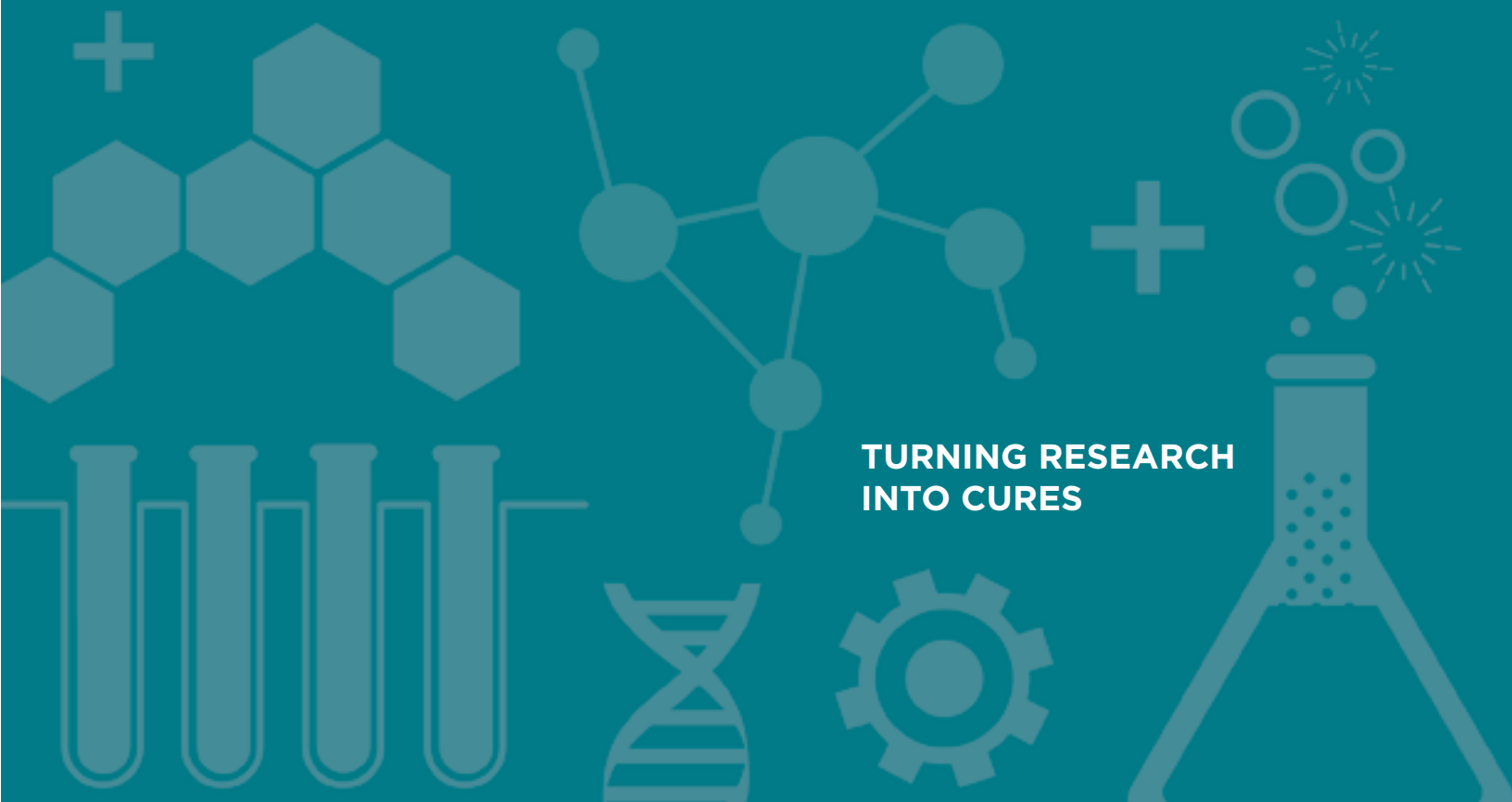


OFFICE OF RESEARCH  
1 University of New Mexico  
MSC08-4560, Fitz Hall B-61  
Albuquerque, NM 87131-0001

RESEARCH ANNUAL REPORT 2024

# DISCOVERY

## THE BRAIN ISSUE



**TURNING RESEARCH  
INTO CURES**