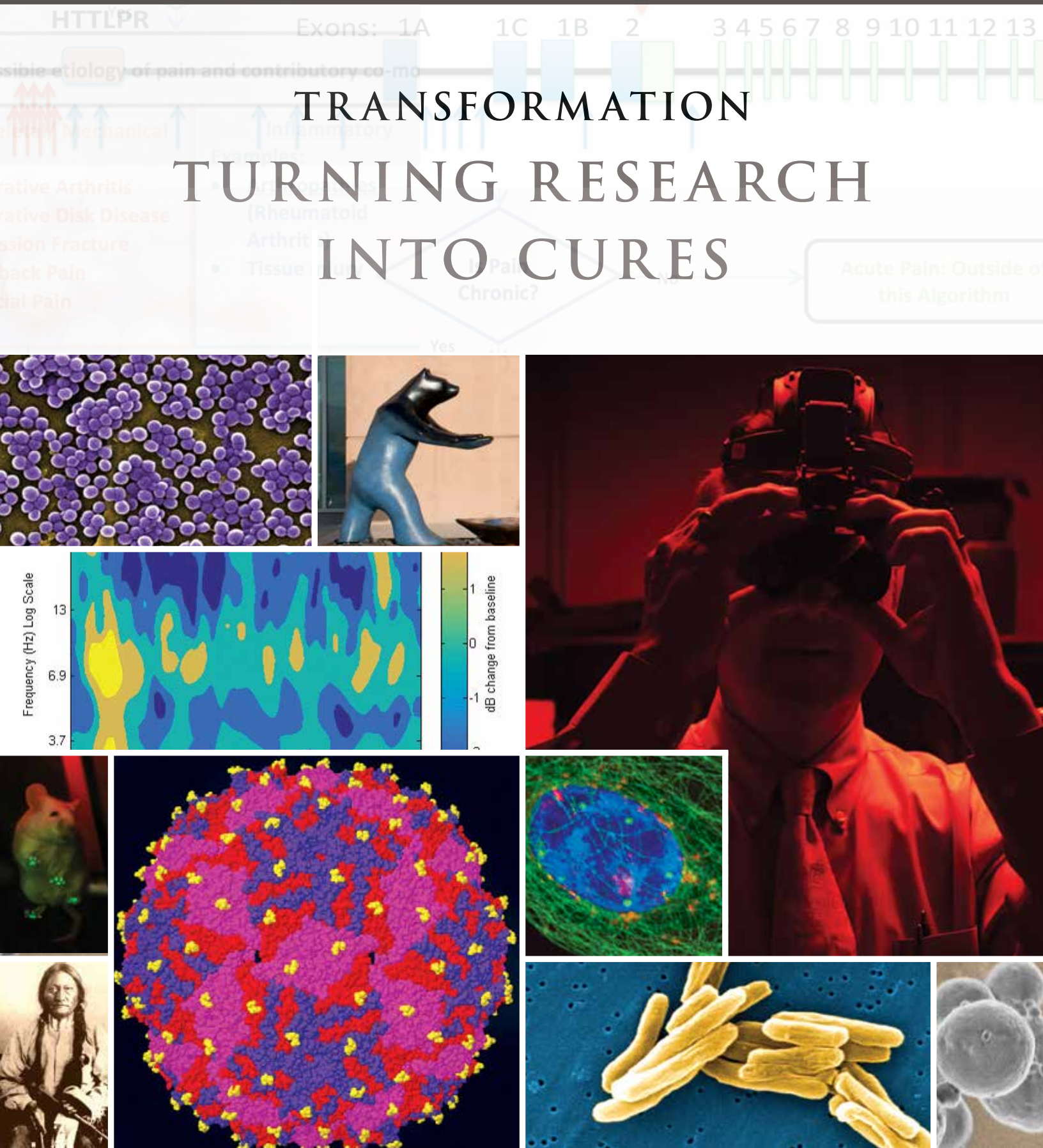


# TRANSFORMATION TURNING RESEARCH INTO CURES





# UNIVERSITY OF NEW MEXICO HEALTH SCIENCES CENTER VISION, MISSION AND CORE VALUES

## VISION

The University of New Mexico Health Sciences Center will work with community partners to help New Mexico make more progress in health and health equity than any other state.

## MISSION

Our mission is to provide an opportunity for all New Mexicans to obtain an excellent education in the health sciences. We will advance health sciences in the most important areas of human health with a focus on the priority health needs of our communities. We will ensure that all people in our majority-minority state have access to the highest-quality health care.

## CORE VALUES

The UNM Health Sciences Center's most important value is a steadfast duty to improve the health of all New Mexicans. We will serve our patients and the public with **integrity**, **accountability** and the highest level of **professionalism**. We will strive as an institution and as individuals to recognize, cultivate and promote all forms of **diversity**; to fully understand the health needs of our communities and to advance clinical, academic and research **excellence**. We are committed to performing our duties with **compassion** and **respect** for our patients, learners and colleagues.

# RESEARCH ANNUAL REPORT 2015

## Letters

From the Chancellor for Health Sciences .....	2
From the Executive Vice Chancellor and Vice Chancellor for Research .....	3
From the Dean of the College of Nursing .....	4
From the Dean of the College of Pharmacy .....	5
From the Executive Vice Dean of the School of Medicine .....	6

## Featured Stories

<i>Game Changer: Practice Detailing Tackles Opioid Overprescription</i> .....	7
<i>Research Renewal: UNM's Clinical and Translational Science Award Extended</i> .....	8
<i>Promises Kept: UNM Cancer Center Wins Coveted NCI Designation</i> .....	10
<i>Early Detection: Behavioral Health Screening in a Primary Care Setting</i> .....	11
<i>Dream Team: Collaborating Across Campus to Treat Brain Injury</i> .....	12
<i>Signal Achievement: Finding New Ways to Fight a Deadly Infection</i> .....	14
<i>Protecting Vulnerable Communities: Inhaled TB Vaccine Could Save Millions of Lives</i> .....	15
<i>Tackling TB: Rapid Diagnostic Test Speeds Treatment</i> .....	16
<i>Motivating Minors: High-Tech Help in Fighting Adolescent Obesity</i> .....	18
<i>Volatile Spirits: Exploring the Link Between Alcohol and Partner Violence</i> .....	19
<i>Research Resource: An Innovative Tool for Understanding Chronic Pain</i> .....	20
<i>Native Wisdom: Helping to Heal Historical Wounds</i> .....	22
<i>Time and Trauma: How Early Life Stress Reshapes the Brain</i> .....	23
<i>From Bench to Bedside: Commercializing Biotechnology One Startup at a Time</i> .....	24
<i>The Stigma of Mental Illness: Why Military Health Care Providers Don't Seek Help</i> .....	25
UNM Health Sciences Training Grants .....	26
Giving Life to Innovation: How Public-Private Partnerships Promote Biotechnology .....	30
2015 Excellence in Research Awards .....	32
By the Numbers: UNM HSC Research 2015 .....	34
Contracts and Grants FY 2015 .....	35-60





*Paul B. Roth, MD, MS*

A handwritten signature in black ink, reading "Paul B. Roth".

One of the great things about working at an academic health center is seeing the many ways in which our missions of education, research and clinical care reinforce one another.

Our biomedical research enterprise, which has long focused on developing state-of-the-art diagnostic and therapeutic technology, is also a powerful driver of economic activity in New Mexico.

Each year, UNM Health Sciences Center research activity pumps tens of millions of dollars into the state's economy, supporting hundreds of well-paid, highly skilled jobs.

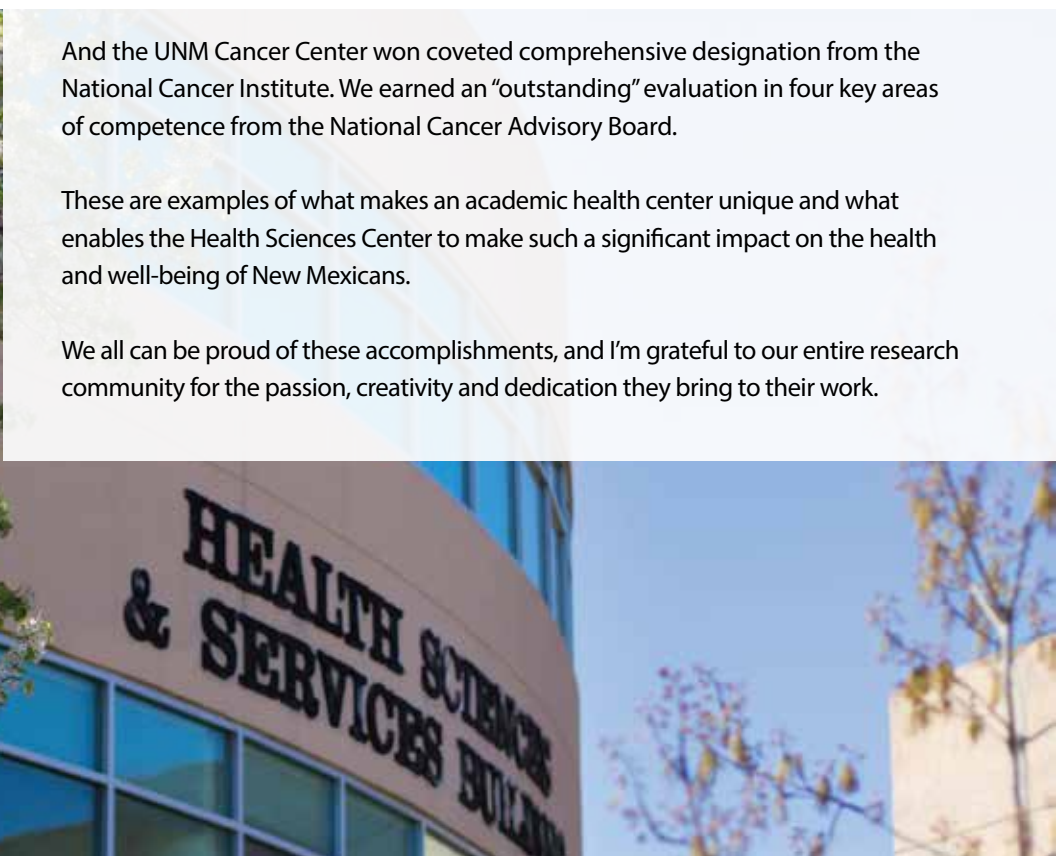
An additional economic boost comes in the form of new private sector biotech startups that are spun off from UNM HSC research innovations. Each of these new startups has the potential to grow into a thriving business, creating more jobs and opportunity in our state.

This year, we were fortunate to see renewal of funding for our Clinical & Translational Science Center, which does a tremendous job of training and mentoring the next generation of researchers, creating a clear pathway to continue building on our successes. Our program was one of only four nationally that had an exceptional score, allowing it to be fully funded.

And the UNM Cancer Center won coveted comprehensive designation from the National Cancer Institute. We earned an "outstanding" evaluation in four key areas of competence from the National Cancer Advisory Board.

These are examples of what makes an academic health center unique and what enables the Health Sciences Center to make such a significant impact on the health and well-being of New Mexicans.

We all can be proud of these accomplishments, and I'm grateful to our entire research community for the passion, creativity and dedication they bring to their work.



## FROM THE EXECUTIVE VICE CHANCELLOR AND VICE CHANCELLOR FOR RESEARCH

We did it again! I am pleased to report that the UNM Health Sciences Center continues to make scientific breakthroughs while building its research mission, but in FY 2015 we once again outdid ourselves, securing a record total of \$161 million in funding.

Our funding success is a tribute to the inspired work of our faculty, students and staff, who continue to break new ground in so many areas and have done a terrific job of putting UNM on the map as a center of research and innovation.

This achievement caps more than a decade of continual growth in extramural funding and highlights our focus on developing major new discoveries that improve the health and well-being of New Mexicans.

But that is only part of the story.

The past year also saw the renewal of National Institutes of Health funding for our Clinical & Translational Science Center. The comprehensive designation bestowed on the UNM Cancer Center by the National Cancer Institute is another major achievement. These developments make us one of only 29 institutions in the nation with both a Comprehensive Cancer Center and a Clinical and Translational Science Award.

Adding to the good news, the Brain and Behavioral Health Institute recently won a five-year \$11.6 million grant from the National Institute of General Medical Sciences to develop a new Center for Brain Recovery and Repair.

As you'll read in these pages, our researchers are also finding fresh ways to tackle youth obesity, protecting our communities with new methods for diagnosing and treating tuberculosis and searching for more effective tools to fight deadly MRSA infections.

Stay tuned for further discovery and innovation!



*Richard S. Larson, MD, PhD*

A handwritten signature in black ink, reading "Richard S. Larson".







*Nancy Ridenour,*  
*PhD, RN, APRN, BC, FAAN*

*Nancy Ridenour*

The College of Nursing celebrated its 60th anniversary in 2015, marking a long-standing tradition of providing local and national leadership and innovation with a comprehensive approach to meeting our education, practice and research missions.

Throughout its history, the College has focused on promoting and enhancing health and wellness, along with creative initiatives and strategies to help patients, families and communities manage health challenges.

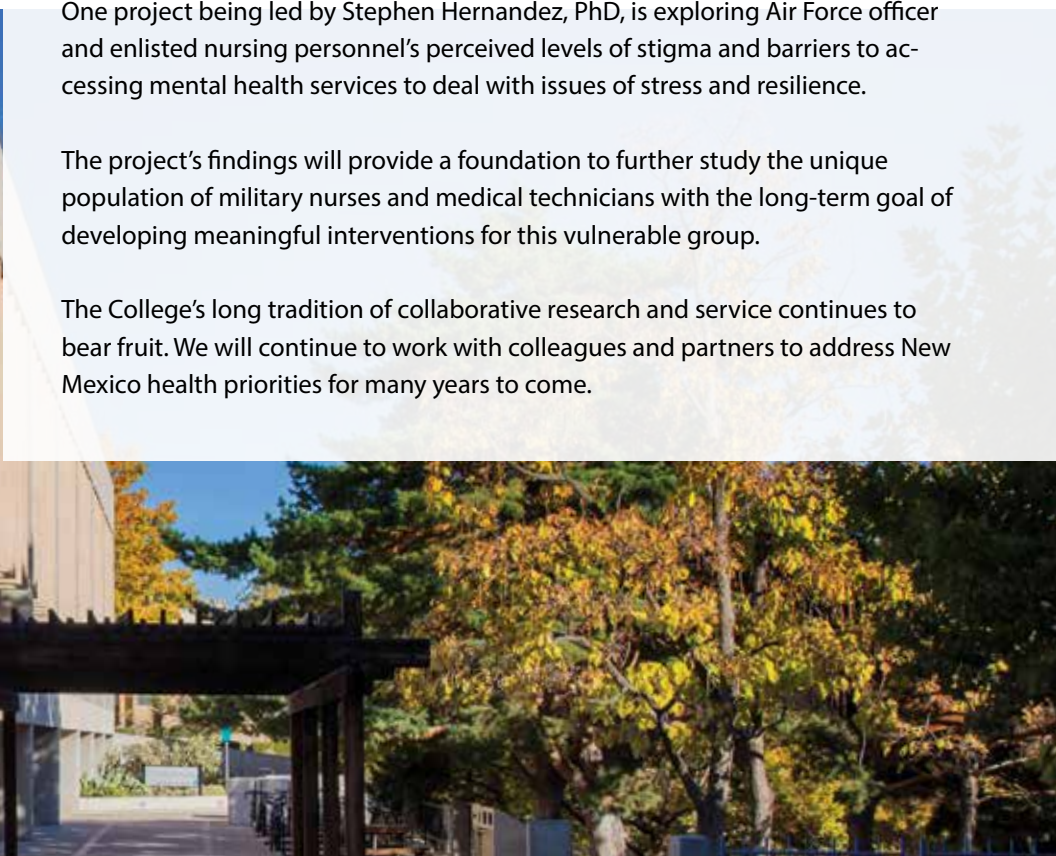
Our research portfolio includes important work in cancer prevention and screening, sleep apnea, pain, respiratory conditions, women's health, childhood asthma and rural health, along with problems affecting particular populations, such as Native Americans and veterans.

College of Nursing faculty serve as leaders and key members of interdisciplinary research teams. They also contribute to local and national initiatives dedicated to advancing the science of health, including UNM's Clinical & Translational Science Center and the federally funded Patient-Centered Outcomes Research Institute. Faculty also hold leadership roles in national and international organizations and share the results of their research widely to extend the impact of their work across New Mexico and well beyond.

One project being led by Stephen Hernandez, PhD, is exploring Air Force officer and enlisted nursing personnel's perceived levels of stigma and barriers to accessing mental health services to deal with issues of stress and resilience.

The project's findings will provide a foundation to further study the unique population of military nurses and medical technicians with the long-term goal of developing meaningful interventions for this vulnerable group.

The College's long tradition of collaborative research and service continues to bear fruit. We will continue to work with colleagues and partners to address New Mexico health priorities for many years to come.



College of Pharmacy scientists are creative visionaries.

With a combined 21 active U.S. patents and another 34 patent applications pending, our faculty researchers are seeking innovative solutions to combat deadly diseases and health issues. Some of their work has led to patents on important inventions to treat melanoma and tuberculosis and to better diagnose pneumonia and other infections.

Our faculty members engage in a wide variety of research that seeks to understand how arsenic and uranium cause disease, how a radiotracer might diagnose appendicitis or better treat asthma – even how smokers might kick the habit without packing on the pounds.

Our scientists are dedicated to advancing human health through better drugs or drug target identification and in clinical settings to achieve better therapeutic outcomes and improvements in health care policies.

Research funding at the College continues to grow. Thanks in part to our “Request-for-Proposals Intramural Pilot Funding Initiative,” which stimulated interdisciplinary collaboration on large-scale grant proposals, research grants and contracts awarded to our faculty members exceeded \$7.1 million last year. We now rank in the top tier of colleges of pharmacy in National Institutes of Health (NIH) funding and in total research dollars.

More than 30 of our faculty members are involved in research. Faculty submitted 80 proposals during FY 2015. Impressively, 50 of these proposals were funded, for a success rate of 63 percent.

This year, a team of environmental health researchers successfully obtained a prestigious NIH P50 grant to establish the Center for Native American Environmental Health Equality Research. The researchers also submitted an NIH P42 Superfund Basic Science Research Center application that will investigate the impact of exposure to toxic metals on human health.



*Lynda S. Welage,  
PharmD, FCCP*





*Martha Cole McGrew, MD*A handwritten signature in black ink that reads "Martha Cole McGrew".

The UNM School of Medicine continued its success in growing research funding and programmatic initiatives amid an increasingly competitive environment for research support.

In the fiscal year ending in June 2015 the school set another record in total funding, reaching \$143 million. This represents an increase of \$10 million compared to FY 2014.

National Institutes of Health (NIH) support for research has remained nearly flat over the past five years. Given that and the declining purchasing power of awarded funds, the School of Medicine's success is all the more remarkable.

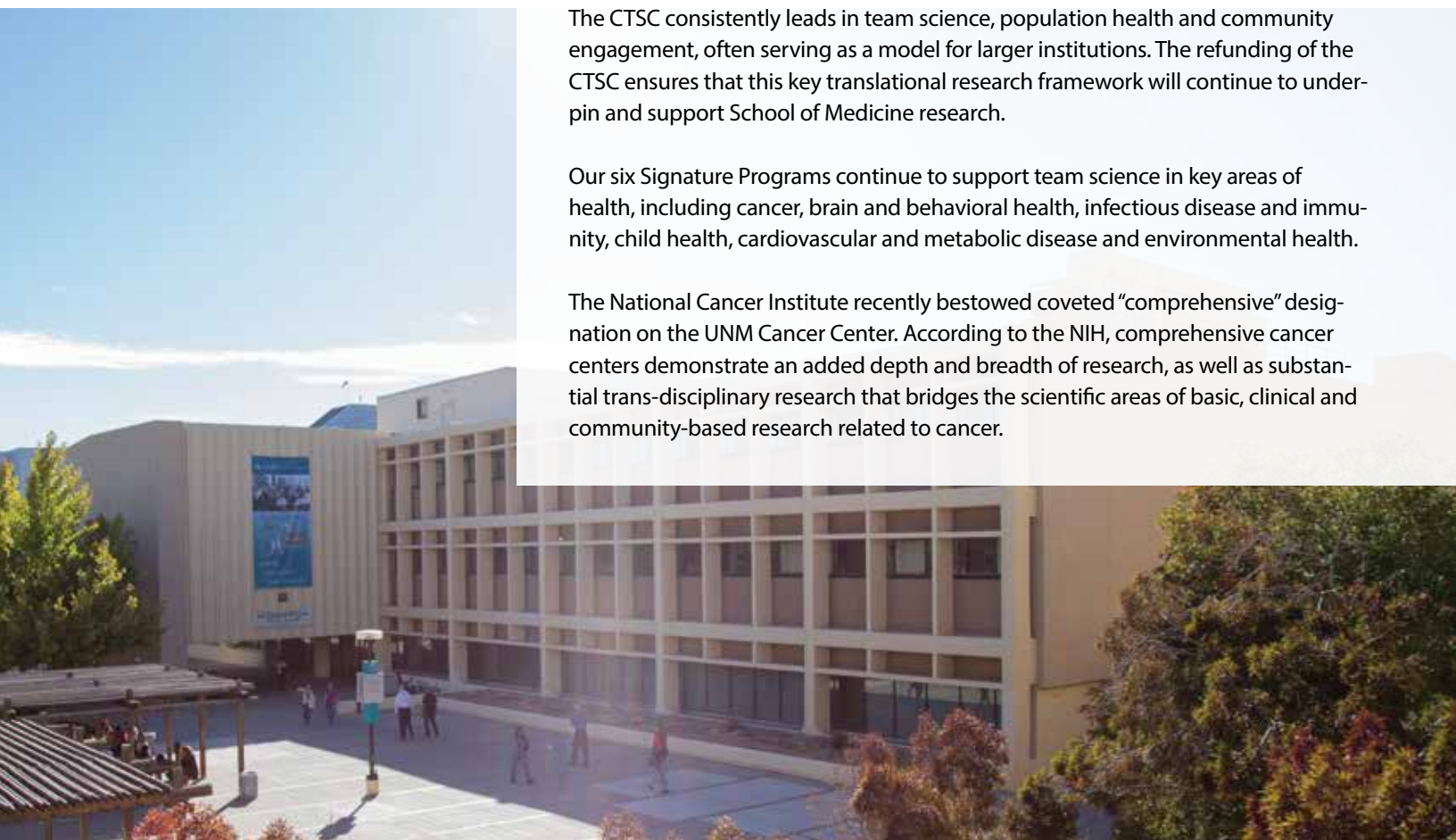
Two UNM departments, Family Medicine and Pathology, were ranked in the Top 10 in the country among their peer departments for NIH funding. Ten faculty members received more than \$1 million in NIH funding – with three of those receiving more than \$3 million.

With strong participation from the School of Medicine, the Clinical & Translational Science Center (CTSC) submitted the second-best application nationwide and received NIH funding for its second five-year award.

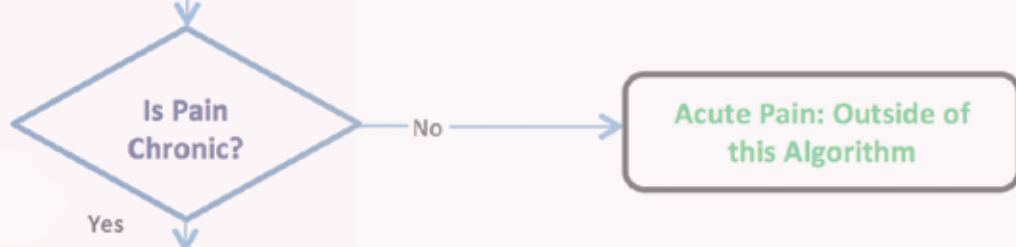
The CTSC consistently leads in team science, population health and community engagement, often serving as a model for larger institutions. The refunding of the CTSC ensures that this key translational research framework will continue to underpin and support School of Medicine research.

Our six Signature Programs continue to support team science in key areas of health, including cancer, brain and behavioral health, infectious disease and immunity, child health, cardiovascular and metabolic disease and environmental health.

The National Cancer Institute recently bestowed coveted "comprehensive" designation on the UNM Cancer Center. According to the NIH, comprehensive cancer centers demonstrate an added depth and breadth of research, as well as substantial trans-disciplinary research that bridges the scientific areas of basic, clinical and community-based research related to cancer.







Determine possible etiology of pain and contributory co-morbidities

Neuropathic

Musculoskeletal/ Mechanical

Inflammatory

Multiple Etiologies

Examples:

- Central Pain Syndromes (Post Stroke, Complex Regional Pain Syndrome)
- Fibromyalgia
- Behavioral

GAME CHANGER

## PRACTICE DETAILING TACKLES OPIOID OVERPRESCRIPTION

People living in rural counties are nearly twice as likely as people in big cities to overdose on prescription painkillers, so it's not surprising that New Mexico, with its wide-open spaces, has one of the highest death rates from prescription opioids in the U.S.

It's a disturbing trend for Robert Rhyne, MD, a professor of Family & Community Medicine and co-director of the Clinical & Translational Science Center's Community Engagement and Research Core.

"Small-town docs are passionately interwoven into their communities, caring for friends and neighbors," Rhyne says. "Entire towns' reliance on their local physicians leaves little time for professional networking, education or advancement. The challenge becomes providing the highest standards of care when geographically isolated."

Rhyne believes that the treatment of chronic noncancer pain (CNCP) such as arthritis, back pain or headaches is a frustrating problem for rural primary care providers. "We're overprescribing pain medication based on a dated medical paradigm," he says.

"Newly established clinical guidelines can take years for adoption into clinical practice," Rhyne adds, "so we're developing a system called practice detailing to deliver the most current evidence-based information in the most usable format for rural practitioners to manage CNCP."

Rhyne's team is conducting a comparative study designed to deliver CNCP guidelines in a toolkit that rural clinicians can – and will – apply to their patients using an algorithm that best fits rural practices.

From that algorithm, developed partly with feedback from community clinicians, the detailed toolkit is continually evolving to provide evidence-based clinical guidelines for treating CNCP patients with and without opioids.

"We're training physicians to better conduct patient assessments and explore treatment options such as physical and behavioral therapy or sleep therapy, surgical interventions, acupuncture and others – with opioids as the final treatment option," Rhyne explains.

"We're adaptive and interactive, using two-way communication to create better information and buy-in from rural practitioners in communities across the state."



**Principal Investigator**

**Robert Rhyne, MD**

Professor and Vice Chair of Research,  
Department of Family &  
Community Medicine

**Grant Name**

Health Extension Rural Offices:  
Translating Research into Localities

**Grantor**

Agency for Healthcare  
Research and Quality



## RESEARCH RENEWAL

# UNM'S CLINICAL AND TRANSLATIONAL SCIENCE AWARD EXTENDED



### Principal Investigator

**Richard S. Larson, MD, PhD**

Executive Vice Chancellor and Vice Chancellor  
for Research, UNM Health Sciences Center;  
Professor, Department of Pathology

### Grant Name

UNM Clinical & Translational Science Center

### Grantor

National Institutes of Health

The UNM Clinical & Translational Science Center (CTSC) was awarded a five-year, \$23-million grant renewal in 2015 following a fierce national competition.

It received one of the highest scores in the nation, becoming one of only four such centers nationally to receive full Clinical and Translational Science Award (CTSA) funding from the National Institutes of Health (NIH).

This award recognizes UNM's success in conducting innovative, cutting-edge biomedical research that quickly and safely converts fresh ideas into New Mexico clinical practice, says Richard S. Larson, MD, PhD, executive vice chancellor and vice chancellor for research at the UNM Health Sciences Center.

"Through our CTSC, we're bringing state-of-the-art therapies and technologies to our citizens and our families that otherwise wouldn't be available," Larson says. "We're accelerating basic health discovery and ways of delivering care into clinical trials in practices in all 33 counties across the state. It's very exciting."

The CTSC pools essential resources for researchers to more efficiently collaborate, design and conduct their studies, while adding an extensive mentoring program to help young scientists learn to create novel medical innovations.

The CTSC also guides investigative teams who are continually introducing important new medications, diagnostic tools, and best-practice protocols to treat New Mexico patients with complex diseases like addiction, obesity and diabetes.

In addition to supporting research by increasing laboratory space, cultivating junior researchers, offering regulatory and legal guidance

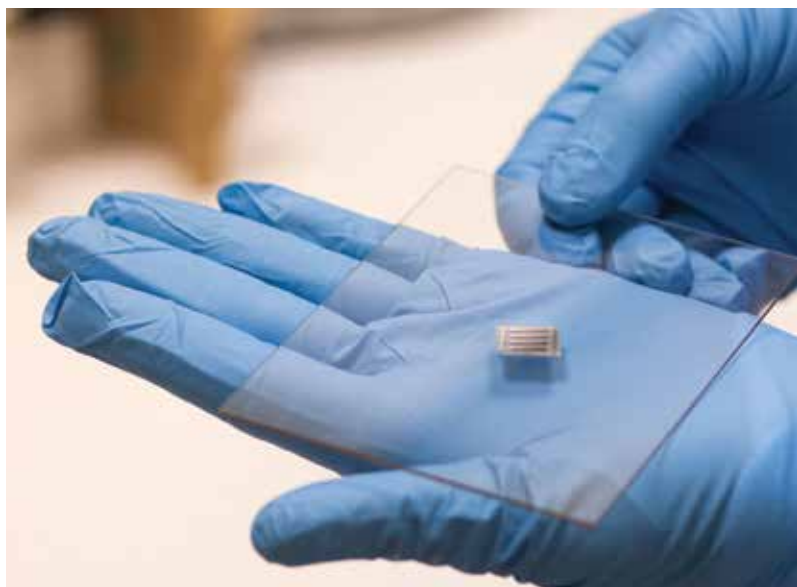


and directing technology and resources, the CTSC will launch new programs to improve innovative study designs, direct prototype development and steer promising results through the commercialization process.

UNM's biomedical research has delivered discoveries in many areas, including infectious disease, metabolic disorders and substance abuse. More than 500 CTSC researchers and support staff have led the way in developing vaccines for deadly infections like drug-resistant tuberculosis, Larson says. They currently conduct 125 clinical trials across every New Mexico county, along with extensive community-based research throughout the state.

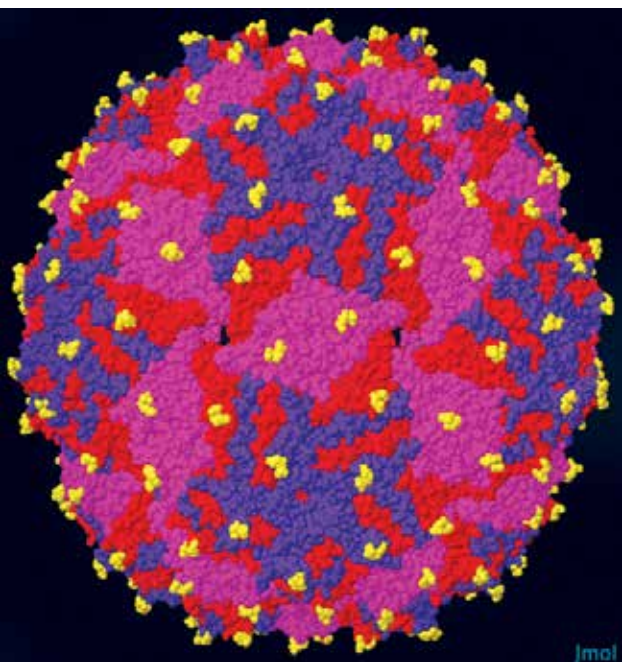
The NIH introduced the CTSA network in 2006 to speed new drug therapies, vaccines and diagnostic tools through the developmental pipeline from bench to bedside. UNM first joined the CTSA consortium in 2010, becoming one of just 62 universities in the country with a program to convert basic laboratory discoveries into medical therapies and devices that make a real difference in patients' lives.

"Our first five years provided a sturdy foundation on which to expand our effectiveness in developing new health and treatment concepts, and seeing them all the way through to actual patient care," Larson says. "In the future we'll be adding to CTSC's scope and focus, particularly in the areas of translational workforce development, multi-site study support, participant recruitment and CTSA consortium-wide initiatives."



In addition to its tremendous economic contribution to New Mexico – nearly 40 biotech businesses have spun off from research conducted at UNM over the past decade – the renewed CTSA represents UNM HSC's ascendance into the higher tier of academic health centers nationally, Larson adds.

"Perhaps most importantly, the CTSA enables us to conduct meaningful research that brings hope to our patients throughout the state," he says. "This accomplishment demonstrates the terrific progress we have made in just five years as a CTSA recipient. We are excited to contemplate the many new advances in coming years that will benefit New Mexicans."





## PROMISES KEPT

# UNM CANCER CENTER WINS COVETED NCI DESIGNATION

"Fifteen years ago, we made a promise to be of service to the people of New Mexico and to overcome New Mexico's cancer burden," says Cheryl Willman, MD.

"To do that, we sought to be one of the nation's very best: a National Cancer Institute-designated comprehensive Cancer Center," says Willman, director and CEO of the UNM Comprehensive Cancer Center. "And we delivered!"

The Cancer Center underwent a rigorous process to achieve its comprehensive designation last summer. The highly sought-after designation recognizes the center's achievements in four areas: providing integrated cancer diagnosis and treatment, providing access to national clinical trials, conducting world-class cancer research and educating the next generation of cancer health care and scientific professionals.

UNM's cancer research is supported by more than \$72 million in annual extramural funding and takes advantage of regional scientific and engineering strengths. Cancer Center scientists collaborate with colleagues at Sandia National Laboratories, Los Alamos National Laboratory and the Lovelace Respiratory Research Institute.

UNM scientists also work with researchers at New Mexico State University. These collaborations have led to breakthroughs in targeted therapies and cancer diagnostics.

The UNM Comprehensive Cancer Center also conducts clinical research. As part of the Oncology Research Information Exchange Network, it is launching a program to offer patients an opportunity to have their cancer tumors sequenced to benefit not only cancer research but also themselves when newer, better treatments become available.

In addition, the Cancer Center's NCI Community Oncology Research Program grant supports access to clinical trials in diverse communities throughout the state, helping patients and cancer scientists alike.



**Principal Investigator**  
**Cheryl Willman, MD**  
Director and CEO,  
UNM Comprehensive Cancer Center

**Grant Name**  
P30 Cancer Center Support Grant

**Grantor**  
National Institutes of Health/  
National Cancer Institute





## EARLY DETECTION

# BEHAVIORAL HEALTH SCREENING IN A PRIMARY CARE SETTING

In the substance use and mental health world, researchers know that early detection and treatment can greatly improve outcomes. In New Mexico these conditions often go untreated because of stigma and lack of access due to the limited behavioral health workforce.

Deborah Altschul, PhD, aims to address these challenges head-on with her New Mexico Screening, Brief Intervention and Referral to Treatment program.

“Most people already go to primary and urgent care for other health issues,” she says. “Our goal is to infuse behavioral health into these settings. That way, treatment is easily accessible in nonthreatening settings.”

Each of the grant’s sites houses a behavioral health provider along with a certified peer support worker. Every patient undergoes a universal screen that takes only minutes to complete.

If the screen is positive for substance abuse, depression, anxiety or trauma, patients are immediately introduced to the behavioral health team for further assessment and treatment. “This increases access to convenient, evidence-based treatment,” Altschul says.

Altschul and her team collect data on every person who is screened. They follow 20 percent of the patients who screen positive every six months for two years to evaluate whether this approach effectively integrates behavioral health into primary care settings.

“By putting screening and treatment where people already are comfortable seeking help, we hope to catch substance abuse and mental health issues before they become big problems,” Altschul says.

“Additionally, given our state’s limited behavioral health workforce and health disparities, this research has major implications for public health in New Mexico.”



### Principal Investigator

**Deborah Altschul, PhD**

Assistant Professor and Division Chief, Community Behavioral Health, Department of Psychiatry and Behavioral Sciences

### Grant Name

New Mexico Screening, Brief Intervention and Referral to Treatment


### Grantors

Substance Abuse and Mental Health Services Administration, New Mexico Behavioral Health Services Division

A photograph of a modern building with large windows and the name 'DOMENICI HALL' on its facade. The sky is clear and blue.

## DREAM TEAM

# COLLABORATING ACROSS CAMPUS TO TREAT BRAIN INJURY

A portrait of Bill Shuttleworth, a man with short dark hair, wearing a light blue button-down shirt, smiling at the camera.

The human brain – containing some 86 billion neurons (and trillions of connections among them) – is the most intricate known structure in the universe. A special team is needed to tackle this complexity and devise new treatments for neurological diseases and injuries.

UNM's Brain & Behavioral Health Institute (BBHI) takes a multidisciplinary approach to attacking brain-related problems, bringing together researchers from across campus, including the departments of Neurology, Neurosurgery, Neurosciences and Psychiatry and Behavioral Sciences.

"Research and education have traditionally been quite compartmentalized," says BBHI director Bill Shuttleworth, PhD, Regents' Professor in the Department of Neurosciences and associate director of the Clinical & Translational Science Center. "BBHI dramatically changes the dynamic. We have an opportunity to leverage each other's expertise to enrich research programs and be more responsive to national funding opportunities."

One example is the competitive five-year \$11.6 million federal grant that BBHI recently secured to establish a new Center for Brain Recovery and Repair. The grant from the National Institute of General Medical Sciences will fund five junior investigators to launch new research into brain stimulation techniques and ways of regenerating brain tissue.

The money will also help provide research support. "We're a platform to facilitate diverse programs that address brain health across the lifespan," Shuttleworth says. "This is one of BBHI's key achievements to date."

BBHI is committed to tailoring its patient-centered research to meet the unique needs of New Mexicans. Starting in 2013, BBHI faculty spent 18 months meeting with individuals and advocacy organizations to find out what mattered most to them.

### Principal Investigator

#### **Bill Shuttleworth, PhD**

Director, UNM Brain & Behavioral Health Institute, Regents' Professor, Department of Neurosciences

### Grant Name

UNM Center for Brain Recovery and Repair

### Grantor

National Institutes of Health/National Institute of General Medical Sciences





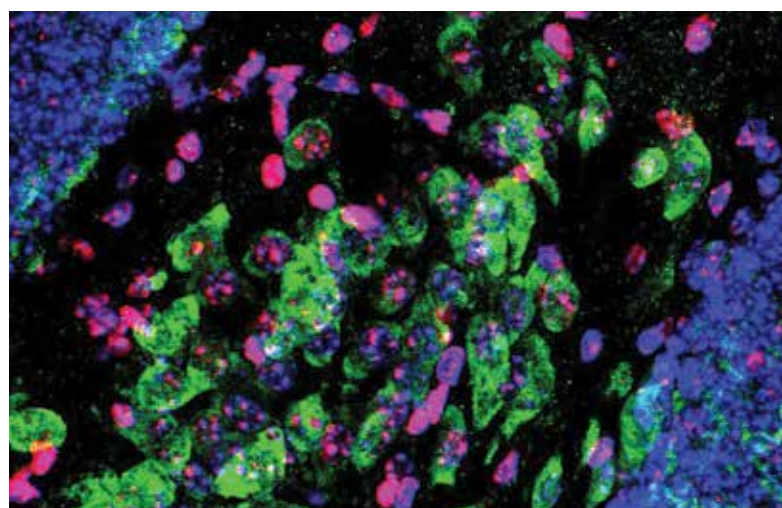
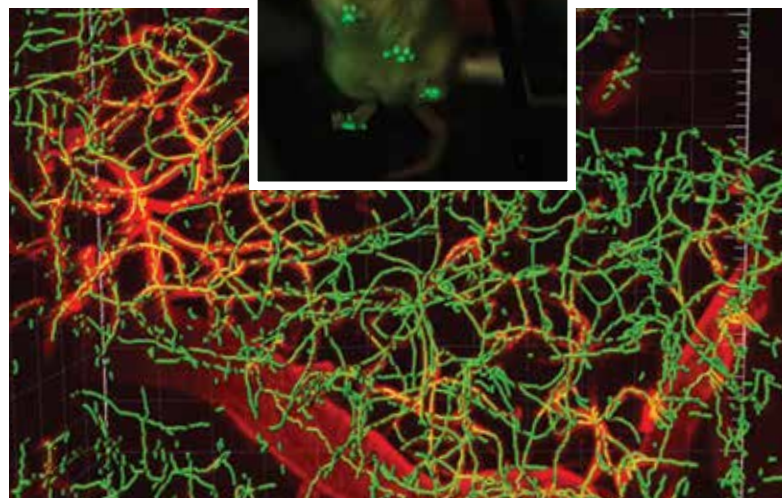
Community groups “are really the engine pulling the train,” Shuttleworth says. He credits the New Mexico Brain Network, a coalition of patient advocacy organizations, with helping to shape the research agenda. “They helped us develop a meaningful program.”

Network representatives will be included in steering committees to help shape the center’s development, he says. The group has been meeting monthly and is also working with the Alan Alda Center for Communicating Science at Stony Brook University.

The Alda Center generally focuses on teaching scientists to communicate with the public, but the New Mexico advocates have helped flip the paradigm; now, the center has become interested in teaching scientists how to listen to laypeople. This work is funded by a federal Patient-Centered Outcomes Research Institute award to BBHI to facilitate progress in Alzheimer’s disease, cerebral cavernous malformations and autism.

“We’re trying to do something special,” Shuttleworth says. “We’re trying to pull people together from very different groups across campus. People have been working on brain disorders at UNM for decades and there has been a pent-up feeling that we could do more collaboratively, across disciplines.”

BBHI is making progress in its research, Shuttleworth says. “It has an ambitious agenda. But, still, there’s a lot of hard work to do to break down some of those barriers. We’re looking for opportunities to collaborate.”



Featured on **HSC**TV  
<https://vimeo.com/hsc/bbhi>





## SIGNAL ACHIEVEMENT

# FINDING NEW WAYS TO FIGHT A DEADLY INFECTION

The Centers for Disease Control lists Methicillin-resistant *Staphylococcus aureus* (MRSA) as a top threat to human health and have called for a national strategy to combat it. At UNM, Pamela Hall, PhD, and her research team are doing their part, looking for a new way to defeat MRSA.

It is an important battle. In the past, MRSA was known as a hospital-acquired disease, striking patients who have compromised immune systems. But even healthy people – from kids to pro-football players – can contract it. The past few years have seen the drug-resistant germs evolving faster and faster, Hall says.

“It is going to take a multi-level offensive to defeat MRSA,” says Hall, an assistant professor in the College of Pharmacy’s Department of Pharmaceutical Sciences. “But if we can find the means to disarm the bacteria, then we can defeat them.”

Bacteria become drug-resistant when a few germs survive exposure to an antibiotic. Killing off their competition actually makes it easier for the remaining germs to multiply.

Hall’s lab is testing anti-virulence signaling strategies. If vaccines can be developed that block the bacteria’s ability to recognize and communicate with each other, they won’t become activated and begin to colonize – meaning no infection to eradicate and no chance of resistance developing.

Hall and her team have found that targeting virulence regulation systems can actively protect from MRSA. The next step is gaining a better understanding of how the vaccine will perform against different types of MRSA.

The stakes are high. A future without effective strategies to battle MRSA would mean a step back to the pre-antibiotic world, where even a small cut could be catastrophic.



### Principal Investigator

**Pamela Hall, PhD**

Assistant Professor,  
Department of Pharmaceutical Sciences

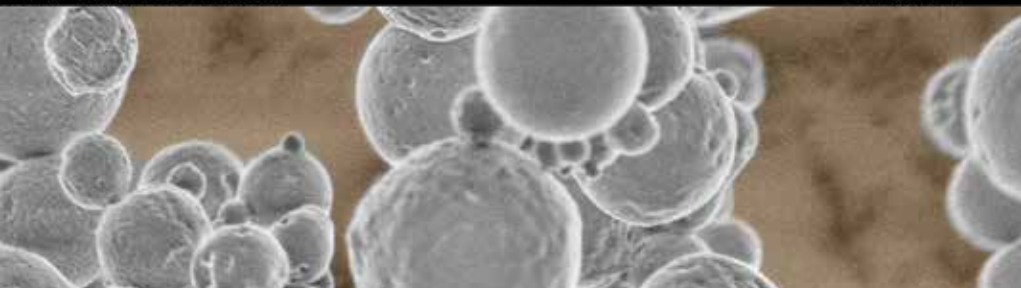
### Grant Name

Apolipoprotein B and Control of *S. aureus*  
Quorum Sensing

### Grantor

National Institutes of Health





## PROTECTING VULNERABLE COMMUNITIES INHALED TB VACCINE COULD SAVE MILLIONS OF LIVES

Dominique Price wants to wage a war on tuberculosis with a vaccine that works.

"I am extremely motivated," says Price, a postgraduate student in the Department of Pharmaceutical Sciences.

TB is one of the world's deadliest contagious diseases – 9 million people developed the disease in 2009, and 1.5 million died from it – but most fatalities are preventable.

The current injectable vaccine, known as Bacille Calmette-Guerin or BCG, is used in more than 100 countries, but it provides little protection in most hard-hit areas of the world, including Southeast Asia and Africa.

"It does not generate a strong immune response in the lungs, the prime region where we need the immune cells," says Pavan Muttill, PhD, an assistant professor in Pharmaceutical Sciences.

"We could treat the disease by giving a vaccine directly into the lungs," adds Muttill, the principal investigator of a study designed to develop a better TB vaccine.

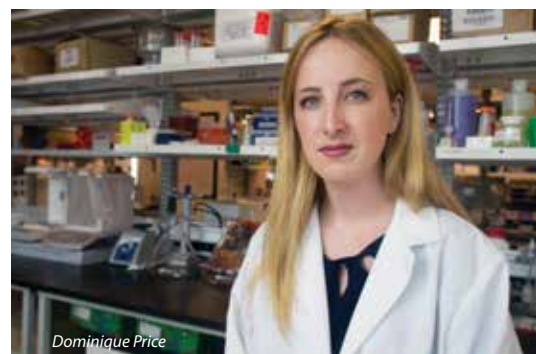
Price and Muttill's research suggests that the BCG vaccine's ineffectiveness is partly due to people's exposure to non-tuberculosis mycobacteria in soil and water.

The body develops ways to "compartmentalize immunity" by triggering an immune response to some pathogens while avoiding a response to others that are not necessarily harmful to the body, Price says. But the mycobacteria, which belong to the same family as tuberculosis, confuse the immune system, rendering the injectable vaccine less effective.

Price tested in mice whether a dry powderized form of the vaccine could provide better protection if delivered directly to the lungs.

Mice exposed to mycobacteria got sick after receiving the current BCG vaccine through the skin. But when they received a vaccine via the lungs, the mice developed an effective immune response.

"The mice were able to fight off the bacteria," Price says. "That is really exciting."



Dominique Price

### Principal Investigator

**Pavan Muttill, PhD**

Assistant Professor, Department of Pharmaceutical Sciences, College of Pharmacy

### Co-Investigator

**Dominique Price**

Biomedical Sciences Graduate Program Doctoral Candidate, Department of Pharmaceutical Sciences

### Grant Name

Pulmonary BCG Immunization for Uniform Protection Against TB

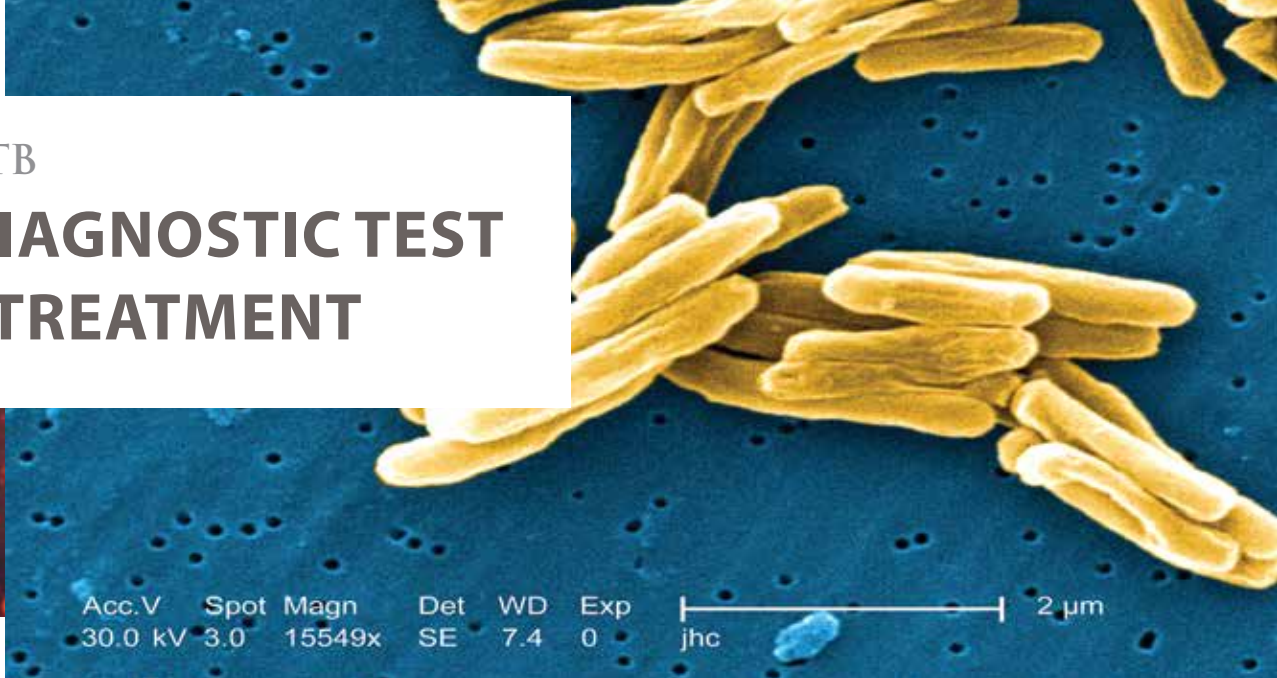
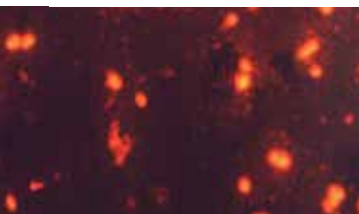
### Grantor

Bill and Melinda Gates Foundation Grand Challenges Exploration; College of Pharmacy

Featured on **HSC**TV  
<https://vimeo.com/hsc/price>

TACKLING TB

# RAPID DIAGNOSTIC TEST SPEEDS TREATMENT



**Principal Investigator**  
**Graham Timmins, PhD**

Associate Professor, Department  
of Pharmaceutical Sciences

**Grant Name**

Pyrazinamide Breath Test for TB

**Grantor**

National Institutes of Health/  
National Institute of Allergy and  
Infectious Diseases

“What I kind of do is put unusual things together,” says Graham Timmins, an associate professor in the College of Pharmacy’s Department of Pharmaceutical Sciences.

It’s a modest statement from a researcher who holds seven UNM-affiliated patents that involve innovative technology to quickly diagnose tuberculosis and other lung infections.

Another Timmins patent proposes a more effective treatment for TB, and yet another involves evaluating sunscreens for their protection against all potentially damaging solar radiation.

His research focuses on using stable isotope-related compounds and free radical biology – the unusual things he puts together – to better diagnose and treat some common and deadly diseases.

Asked which of those patents he is most proud of, Timmins groans. “Ahh,” he says. “It’s like which of your children do you love the most?”

Let’s start with his rapid breath-test technology, known as the urease breath test. Ureases are bacterial enzymes that are expressed by many bacteria. “If you look at serious lung pathogens,” Timmins says, “most of them have it.”

Timmins’ stable isotope-labeled tracer compound, inhaled by a patient through a nebulizer or inhaler, fills the entire lung. It detects and identifies different infections upon exhalation – and does so within minutes.

“You can screen for tuberculosis,” Timmins says. “You can see if somebody’s got pneumonia. You might be able to see the difference between viral and bacterial pneumonia.”

His rapid breath-test technology patents have led to the creation of a company, Avisa Pharma, headquartered in Santa Fe. The company has raised \$8 million and its first clinical development is focusing on using





Timmins's rapid breath test for TB with plans to expand research into pneumonia and cystic fibrosis.

If there is a theme to Timmins' work, it is speed.

"What we're trying to do is have a very, very rapid screening test for TB so the whole thing could be over in five or 10 minutes," Timmins says. The fastest TB diagnostic test now takes three hours and the technology it uses is relatively un-portable.

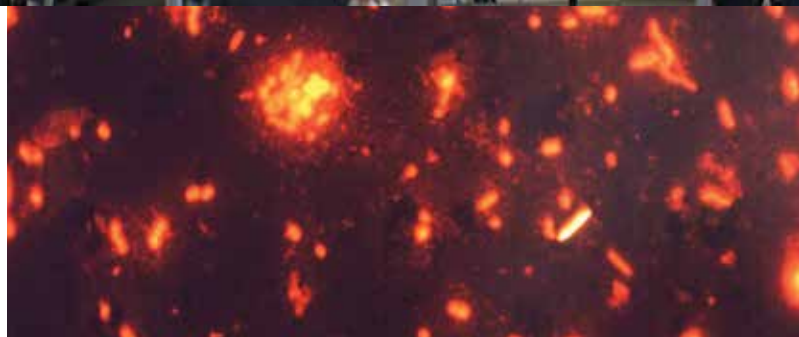
TB is most common in developing countries where transportation is limited – it can take a full day for a patient to travel to a clinic or a clinician to travel to a rural area to conduct testing.

"With this," Timmins says, "you could put everything in a backpack and you could just cycle to a village and test a whole lot of people. If somebody can be diagnosed and have their drug susceptibility determined in that single encounter, then you don't lose them to follow-up. That's a major improvement."

The test, which has worked in 10 minutes in animal trials, could have a huge impact: the disease infects millions of people worldwide and results in 1.5 million deaths each year.

"Sometimes," Timmins says, "it's just speed. You can potentially diagnose earlier in the processes, with the assumption that if you can intervene earlier there'll be a better outcome."

Another of his innovations modifies an existing TB drug with stable isotopes to improve its infection-fighting effectiveness. "It's very, very complex," Timmins says. "It's taken me seven or eight years to figure it out."



Yet another patent addresses the efficacy of sunscreens in protecting against melanoma. Sun Protection Factor ratings only measure protections against ultraviolet radiation, not all of the potentially damaging wavelengths. Timmins' patent involves analyzing a sunscreen for all the potential melanoma protection factors.

And another involves using the breath test to rapidly diagnose *pseudomonas aeruginosa* in cystic fibrosis patients. Once it is established, it's a very difficult infection to eradicate, but when caught early it can be eliminated. Timmins hopes the test will significantly improve the lives of some cystic fibrosis patients.

Timmins, who joined UNM in 2001, has been recognized many times for his research accomplishments. In 2013 he received the STC.UNM Innovation Fellow Award thanks to his prolific record.

While accolades and patents are prestigious and pharmaceutical companies may show profit, Timmins says the questions that underlie the research are his real motivators.

"The reason you do it is to get at these questions," Timmins says. "Most smart people just like working problems."



## MOTIVATING MINORS

# HIGH-TECH HELP IN FIGHTING ADOLESCENT OBESITY

Teenagers love high-tech gear, so it makes sense to use the latest gadgets to improve their health.

But few studies have been done on using technology to motivate teens to become more active and lose weight, says Jeanne Dalen, PhD, research assistant professor in the Office of Pediatric Research.

Dalen and her team studied three different brands of activity trackers – devices that record data such as steps taken, heart rate and calories burned. “Researchers usually use these just to collect data,” she says. “We began to ask if fitness trackers are motivating in and of themselves.”

The challenge is a major one: 35 percent of U.S. teenagers are overweight and one in six has metabolic syndrome.

In a recent study Dalen divided adolescents ages 11-16 into three groups. Each tested three different trackers for several weeks.

“We wanted to know if they would wear them and what they would like,” Dalen says. “Fitness trackers are beginning to be paired with motivational websites, so people can really start to become engaged on a social level and on a motivational level, using computer technology.”

Dalen is also studying the effectiveness of a meditation-based mindful eating program for teens. “This may represent a unique scientific approach to the current adolescent obesity epidemic,” she says.

Her team has identified an unexpected barrier to adolescent enrollment, though.

“We are seeing success once families are enrolled and begin to experiment with eating mindfully together at mealtime,” she says. “But sometimes the last thing a teenager is going to want to do is anything that their parent thinks is a good idea.”

### Principal Investigator

**Jeanne Dalen, PhD**

Research Assistant Professor,  
Office of Pediatric Research

### Grant Name

Adaptation and Evaluation of a Family-Based  
Mindful Eating Intervention for Overweight  
Adolescents

### Grantor

National Institutes of Health/National Center  
for Complementary & Alternative Medicine

Featured on **HSC**  
<https://vimeo.com/hscvt/dalen>





## VOLATILE SPIRITS

# EXPLORING THE LINK BETWEEN ALCOHOL AND PARTNER VIOLENCE

Intimate relationships are complex, fueled by biology, chemistry, emotions, environment and upbringing. Mixing in alcohol with often contentious issues such as finances, child rearing or in-laws can quickly ignite domestic violence.

Intimate partner violence is a big problem in the U.S. An estimated 22.4 million physical assaults are committed every year, costing \$6.2 billion in direct medical and mental health services alone.

Investigator Brandi Fink, PhD, a KL2 Scholar in the Clinical & Translational Science Center, believes that alcohol-induced over-arousal plays a crucial role in heightening patterns of violence between couples.

"Fifty to 75 percent of partner violence incidents involve one or both partners under the influence of alcohol," she says. "You can't study partner violence without studying the effects of alcohol."

Alcohol-induced over-arousal reflects changes in heart rate, respiration, skin conductance and brain responses that Fink hypothesizes play a crucial role in triggering partner violence.

Fink's study compares the arousing effects of alcohol amid conflict, as well as the different responses in emotion regulation between violent and nonviolent partners.

She's applying rigorous screening, interviewing and coding, precise demographic and psychophysiological data collection and EEG neuroimaging measures to her carefully selected sample.

Current partner violence interventions rarely address alcohol use and can be tainted by cultural assumptions, Fink says. They often focus on males, based on the belief that the male is always the aggressor.

"In fact, there are over 200 studies that show both genders are equally violent," she says. "And when only one partner is violent, it's more often the female. By blending psychology, psychiatry and clinical neurosciences research methods, we have teamed to scientifically dissect this serious public health issue that destroys New Mexico families."



### Principal Investigator

**Brandi Fink, PhD**

Assistant Professor,  
Department of Psychiatry and  
Behavioral Sciences

### Grant Name

Overarousal as a Mechanism  
Between Alcohol Use and  
Intimate Partner Violence

### Grantor

UNM CTSC; National  
Institutes of Health/  
National Center for Research  
Resources; NIH/National  
Center for Advancing  
Translational Sciences

## RESEARCH RESOURCE

# AN INNOVATIVE TOOL FOR UNDERSTANDING CHRONIC PAIN



### Principal Investigators

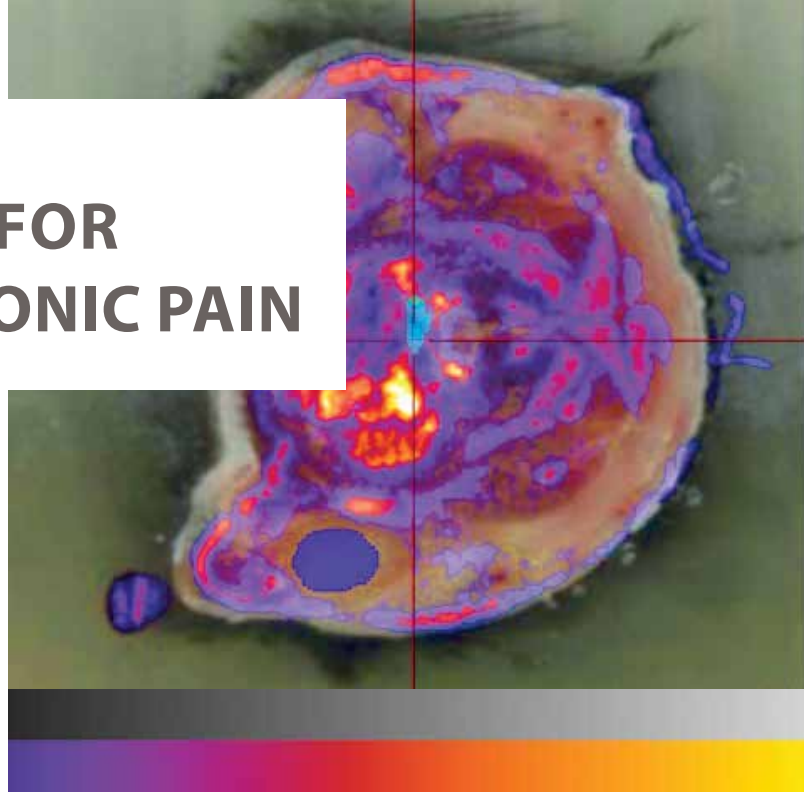
**Hugh Martin, MD**  
Chair, Department of  
Anesthesiology and Critical Care

**Erin Milligan, PhD**  
Associate Professor,  
Department of Neurosciences

**Jeffrey Norenberg, PhD**  
Professor and Director of  
Radiopharmaceutical Sciences

**Grant**  
UNM Anesthesiology Pain  
Research Laboratory

**Grantor**  
UNM Clinical & Translational  
Science Center



Every creature with a nervous system experiences discomfort from time to time – but severe chronic pain presents a special kind of suffering.

A multidisciplinary team of UNM researchers is tackling this problem with the help of a new, state-of-the-art laboratory that will help them pinpoint how the nervous system responds to potential therapies.

“We want to focus on pain mechanisms,” says Hugh Martin, MD, chair of the Department of Anesthesiology and Critical Care, who spearheaded construction of the new facility. “What are the deep-down neuronal injuries when you have a bone spur that constricts a nerve that comes out of the spinal cord?”

The Anesthesiology Pain Research Laboratory is specially equipped to examine the bio-distribution of novel pain drugs, says Erin Milligan, PhD, an associate professor in the Department of Neuroscience. An animal is administered a candidate drug tagged with a radioisotope compound.

Its tissues are sectioned into ultra-thin 5-micron slices that are imaged and digitally stored. When these images are overlaid with a radioisotope image using special software, scientists can create a 3-D picture showing how much of the drug has been absorbed and where in the body it is concentrated.





It's a big step toward developing a competitive program in the hunt for non-opioid alternatives for pain relief, Milligan says. "We don't have anything in the Southwest like that. New Mexico would benefit tremendously from having a pain research center."

This research traditionally has focused on nerve cells and how they communicate with one another, but Milligan is looking elsewhere. She is studying how, in chronic pain patients, pro-inflammatory immune cells flock from the site of an injury to portions of the spinal cord. "These regions in the spinal cord are critical to pain processing," she says.

She is testing BIRT-377, a drug that could block immune cells from triggering the inflammation that drives chronic pain. That's where Jeffrey Norenberg, PhD, comes in. A professor in the College of Pharmacy and an expert in pharmacodynamics, he has patented a radioisotope-tagged version of the drug.

Norenberg is excited by the new lab's technical capabilities. "It's the marriage of the equipment for collecting the slices to the software to the analysis that makes it state-

of-the-art," he says. "You're not going to see anything like this. That's what makes it a very unique laboratory."

In the new lab, he adds, "We can do noninvasive in vivo imaging using functional probes. We can also drill down to the tissue and even cellular level in this lab. There are certain questions you can only answer when you get into a complex system."

The lab is available to other UNM faculty who are studying neuro-immune conditions, Milligan says. "They are very interested in dovetailing with Hugh's lab. It's going to be a very multidisciplinary research program."

Meanwhile, the insights gained from collaborating with Martin and Norenberg help Milligan connect basic science research to patient needs, she says.

"We don't want to be in an ivory tower," she says. "We really want to be one step from the clinic, all the time. What are the practical clinical problems that are observed in your patients on a routine basis? Hugh's clinical faculty tell me what's practical, what's not practical and what is desperately needed."





## NATIVE WISDOM

# HELPING TO HEAL HISTORICAL WOUNDS

"I am a woman on a mission," Maria Yellow Horse Brave Heart says, recalling how a word of encouragement from an elder on the Standing Rock Sioux Reservation in North and South Dakota set her on the path to earning her PhD in clinical social work.

Decades later, Brave Heart, a research associate professor in the Department of Psychiatry and Behavioral Sciences, is working to help heal American Indians suffering from historical trauma arising from centuries of genocide.

She leads the Iwankapiya-Healing study. Funded by the National Institute of Mental Health, it compares a 12-week course of group interpersonal therapy (IPT) sessions with 12 sessions that combine IPT with the Historical Trauma and Unresolved Grief intervention that Brave Heart developed. The study takes place at a Northern Plains reservation and an urban Southwestern reservation outpatient behavioral health setting.

One example of historical trauma is the government policy, enforced as recently as the 1970s, of forcibly separating American Indian children from their parents and shipping them off to boarding schools. "In the Dakotas, the boarding schools were notoriously abusive or perceived as abusive by people," says Brave Heart, who is Hunkpapa and Oglala Lakota. "What we do is talk about the impact of boarding schools on our people and the traumas that emerge from that."

Exposure to multigenerational trauma leads to heightened risk for a laundry list of emotional problems, Brave Heart says. "PTSD, depression anxiety, difficulty sleeping – all of those kinds of things are framed in reaction to this massive group trauma and how it's been passed on." Addressing this trauma in a therapeutic setting "de-stigmatizes," she says. "It communicates that you're not alone in this."

Participants come to realize that what they're feeling isn't their fault, she says. It also yields understanding – and perhaps forgiveness – for one's parents, grandparents and great-grandparents. "People are more open to looking at what's going on for them now."



### Principal Investigator

**Maria Yellow Horse Brave Heart, PhD**

Associate Professor, Department of Psychiatry and Behavioral Sciences

### Co-Investigator

**Josephine Chase, PhD**

Oglala Lakota College

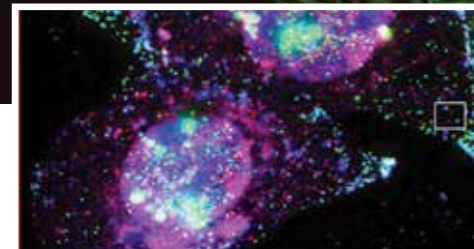
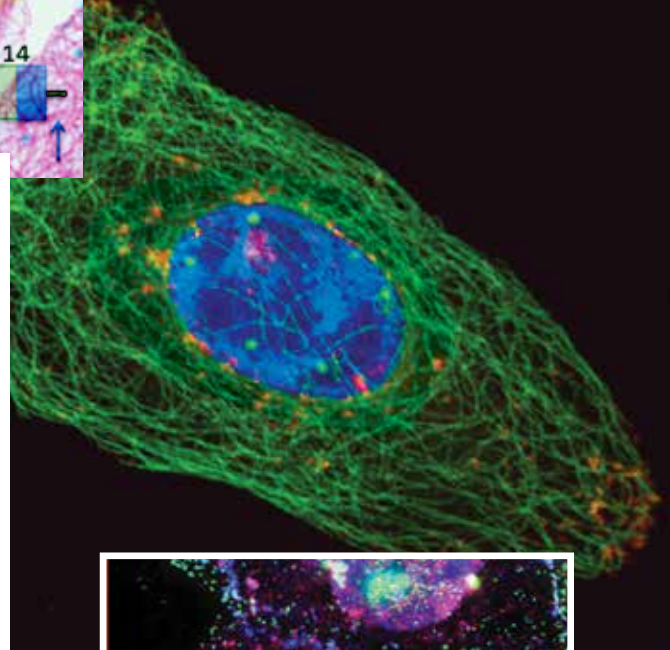
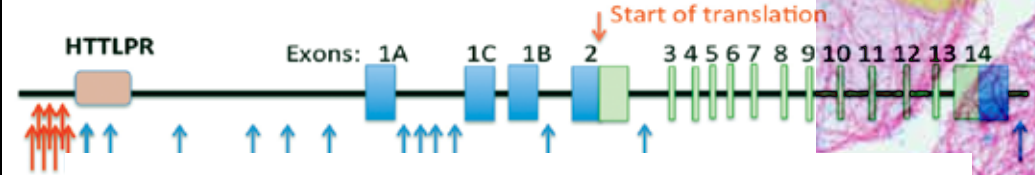
### Grant Name

*Iwankapiya-Healing: Historical Trauma Practice and Group IPT for American Indians*

### Grantor

National Institutes of Health/  
National Institute of Mental Health





## TIME AND TRAUMA

# HOW EARLY LIFE STRESS RESHAPES THE BRAIN

"If you could have the biggest impact in the world," asks Elaine Bearer, MD, PhD, "where would you start?"

Bearer, a professor in the Department of Pathology in the UNM School of Medicine, is answering that question by studying how childhood trauma affects the developing brain. Her research comes amid a virtual epidemic of violence against children.

In 2012, 686,000 American children were victims of maltreatment and more than 1,600 of them died from abuse and neglect, according to the U.S. Department of Health and Human Services.

In animal studies, Bearer showed that adverse experience can permanently affect emotional circuitry. This may result from epigenetic changes, in which gene expression is altered without affecting the inherited DNA sequence. These changes involve a biochemical process called DNA methylation.

Bearer's study suggests persistent stress changes children's brains. "Traumatic experience appears to induce changes in the epigenetic pattern of DNA methylation in the brain," Bearer says.

Bearer focused on methylation of the serotonin transporter gene, extending this analysis to subsets of the 1 billion potential methylation sites in the human genome. Serotonin is a neurotransmitter that plays an important role in regulating emotion.

More than 25,000 methylation sites were significantly altered in children with autism, she found. Many of these changes could be detected in both saliva of living children and the post-mortem brains of children with autism.

"Eight percent of the altered methylation sites found in children correlated with altered sites in the brain," Bearer says. "Saliva gives us a read-out of what's happening in the brain."

The changes indicated abnormal gene expression that could interfere with the development of a young brain.

With these promising findings, Bearer's goal is to discover biomarkers that could help identify traumatized children early and channel them quickly into intervention programs. "I would like to find a way to heal these children," she says.

### Principal Investigator

**Elaine L. Bearer, MD, PhD**

Professor, Department of Pathology

### Co-investigator

**Julia Stephen, PhD**


Adjunct Associate Professor,  
Department of Neurosciences

### Grant Names

DNA Methylation in Translational Studies of Early Life Stress: A Feasibility Study; Live Imaging of Functional Circuitry in Mouse Models of PTSD

### Grantor

National Institutes of Health/  
National Institute of Mental Health and UNM CTSC



## FROM BENCH TO BEDSIDE COMMERCIALIZING BIOTECHNOLOGY ONE STARTUP AT A TIME

UNM Health Sciences Center researchers continually seek new cures and treatments to improve health and save lives.

One sign of their success is the number of patents they receive: UNM ranks 42d in the world in number of patents issued, with UNM HSC accounting for a large part of the total.

What is often overlooked is the economic impact of that research, which has led to 38 new business startups in New Mexico over the past decade, creating new jobs and boosting the state's economy.

The pace of UNM HSC-related business development has been picking up in recent years, with four new ventures

being launched in FY 2015, says Elizabeth Kuuttila, president and CEO of STC.UNM, the non-profit corporation chartered by the Board of Regents to promote technology transfer on behalf of the university.

Albuquerque's Exovita Biosciences is developing technology pioneered by Kristina Trujillo, PhD, research assistant professor in the Department of Cell Biology and Physiology, that uses exosomes – small, fluid-filled packets – to kill cancer cells without harming healthy cells.

New Mexico-based terraSOL is honing analytical software created by Glen Murata, MD, professor in the Department of Internal Medicine, to improve care for people with chronic diseases.

GHP Development, a Colorado company, has licensed a device developed by Mark Hauswald, MD, professor emeritus in the Department of Emergency Medicine, that allows emergency room patients to safely control how much narcotic pain medication they receive.

A new approach to automated flow cytometry is among several new UNM-developed technologies licensed to ieCrowd, a California biotech development group.

The average salary for employees of these companies is generous – in the \$70,000 to \$80,000 range, Kuuttila says. It doesn't hurt that many of those hired by the firms were educated at UNM.

"It's great for the economy," she says, "and it's great for our students, too."



**Elizabeth Kuuttila**  
President and CEO, STC.UNM





## THE STIGMA OF MENTAL ILLNESS

# WHY MILITARY HEALTH CARE PROVIDERS DON'T SEEK HELP

If you were a soldier, how likely would you be to trust the person next to you if you knew he or she had recently been in counseling? If ordered into combat under the command of an officer with an anger problem, would you feel better or more uneasy knowing it was serious enough for him or her to seek counseling?

"Our military forces are highly trained and we don't want to lose them due to stress," says Stephen Hernandez, PhD, RN, assistant professor in the UNM College of Nursing. "But traditionally, there has been a stigma to someone seeking out mental help."

A major in the U.S. Air Force Reserve, Hernandez focuses on military service members' perceptions of stigma and barriers to care associated with seeking mental health services.

An increasing number of research projects have addressed the issue in recent years, he said, but the well-being of medical caregivers themselves has been overlooked. How reluctant are they to seek services when they are overwhelmed, he wondered.

In 2012, Hernandez launched a study that focused on health care providers at multiple Air Force bases. It found officer nursing personnel were significantly more likely than enlisted staff to believe accessing mental health services would be embarrassing, harm their career or cause leaders to blame them for the problem.

Other barriers to seeking care included taking time off from work for treatment and scheduling appointments.

A followup study is already in place. Ultimately, Hernandez says, the goal is to identify effective interventions and decrease stress for medical personnel.



### Principal Investigator

**Stephen Hernandez, PhD, RN**  
Assistant Professor,  
College of Nursing

### Grant Name

Stress, Resilience, and Stigma and  
Barriers to Mental Health Care in  
Air Force Nursing Staff

### Grantor

TriService Nursing Research Program

## UNM HEALTH SCIENCES TRAINING GRANTS

UNM HSC supports training in the biomedical sciences at all levels, engaging students and faculty through outreach initiatives and innovative programs to enhance biomedical excellence. We are pleased to recognize the outstanding students and researchers from our campus who have successfully obtained funding from a National Institutes of Health Research Training and Research Career Development program. These highly competitive national awards help to grow our education and research missions to produce the next generation of diverse and highly qualified biomedical scientists across the spectrum of human health.

**Mario Aragon, PhD Candidate**

T32 Recipient, NIH/NHLBI

*Vasomotor and endothelial barrier impacts of nanoparticulate-induced serum compositional alterations*

Mentor: Matthew Campen, PhD

**Seth Daly, PhD**

T32 Recipient, NIH/NIAID

*Anti-virulence strategies targeting Methicillin-resistant Staphylococcus aureus*

Mentor: Pamela Hall, PhD

**Nathan Bolanos**

K05 Scholar, NIH/NCI

*UV risk in childhood and melanoma later in life*

Mentor: Marianne Berwick, PhD, MPH

**Erica Dashner, PhD**

K12 Scholar, NIH

*Examining a role for zinc supplementation as a way to attenuate the negative effects of exposure to arsenic and uranium*

Mentor: Laurie Hudson, PhD

**Marianne Berwick, PhD, MPH**

K05 Scholar, NIH/NCI

*Melanoma Prevention: Using the Sun*

**Vanessa De La Rosa, PhD**

K12 Scholar, NIH

*Toxicogenomics and genotoxicity studies to determine how arsenic and uranium exposures among New Mexico Native Americans may lead to increased incidence of cancer and other diseases*

Mentor: Jim Liu, PhD

**Jonathan L. Brigman, PhD**

K22 Scholar, NIH

*Understanding the maladaptive behavioral changes that occur in alcohol abuse, drug addiction and numerous neuropsychiatric disorders*

**Dawn Delfin, PhD**

KL2 Scholar, CTSC

*Stem cell adhesion to the extracellular matrix of remodeled, failing hearts*

Mentors: Matthew Campen, PhD; Carlos Roldan, MD

**Alba A. Chavez-Dozal, PhD**

K12 Scholar, NIH/NIGMS

*Investigating the molecular pathogenesis of Candida albicans, including the role of secretory proteins in virulence and biofilm formation*

Mentor: Samuel Lee, MD, PhD

**Darrell Dinwiddie, PhD**

KL2 Scholar, CTSC

*GWAS characterization of viral outbreaks in children: genetic biomarkers of rare diseases*

Mentors: Randall Heidenreich, MD; Scott Ness, PhD

**Jayne M. Christen, PhD**

K12 Scholar, NIH/NIGMS

*Identification of potential vaccine candidates for infectious diseases using a virus-like particle display technology*

Mentor: Bryce Chackerian, PhD

**M. Frank Erasmus, PhD Candidate**

F31 Recipient, NIH

*Targeting the pre-BCR in precursor B acute lymphoblastic leukemia*

Mentors: Bridget Wilson, PhD; Tudor Oprea, MD, PhD



**Jon Femling, MD, PhD**

KL2 Scholar, CTSC

*Translating novel therapeutic pathways against Staphylococcus aureus pathogenesis into patients presenting to the emergency department*

Mentors: Cameron Crandall, MD; Patti Gravitt, PhD

**Anastacia Griego, PhD Candidate**

F31 Recipient, NIH/NCI

*Regulation of human papillomavirus replication via cell signaling pathways*

Mentor: Michelle A. Ozbun, PhD

**Rubi Figueroa-Teran, PhD**

K12 Scholar, NIH/NIGMS

*Enzymatic biofuel cells for production of energy for biomedical applications*

Mentor: Plamen Atanasov, PhD

**Molly Harmon, PhD Candidate**

T32 Recipient, NIH

*Studying the prevalence and underlying mechanisms of metals-induced oxidation of LDL cholesterol and testing the circulating inflammatory potential in a Navajo community disproportionately affected by uranium mining*

Mentor: Matthew Campen, PhD, MSPH

**Brandi Fink, PhD**

KL2 Scholar, NIH/NCATS

*Neuropsychophysiological mediators of the association between alcohol use and intimate partner violence*

Mentors: Fernando Valenzuela, MD, PhD;

Michael Bogenschutz, MD

**Jennifer Hetteema, PhD**

K23 Scholar, NIH

*Mentored research on improving alcohol brief interventions in medical settings***Dallas Benjamin Flies, PhD**

T32 Recipient, NIH/NIAID

*Identification of biomarkers and development of immunotherapeutics for ovarian cancer*

Mentor: Sarah R. Adams, MD

**Joseph Hoover, PhD**

K12 Scholar, NIH/NIGMS

*Using public health, resource management and geographic information science to identify contaminated water and land resources on the Navajo Nation*

Mentor: Johnnye Lewis, PhD

**Natalie Fredette, PhD Candidate**

T32 Recipient, NIH

*Role of G protein-coupled estrogen receptor in regulation of vascular endothelial and smooth muscle function*

Mentor: Eric Prossnitz, PhD

**Stephanie Jerman, PhD**

F31 Recipient, NIH

*OFD1 as constituent of a multimeric protein complex in odontoblast primary cilia*

Mentor: Angela Wandinger-Ness, PhD

**Matt Graus, MS**

T32 Recipient, NIH/NIAID

*Understanding how the fine-scale structures of the cell wall surface of Candida species fungal pathogens controls C-type lectin recruitment on innate immune cells, and how that affects the downstream immune response*

Mentor: Aaron K. Neumann, PhD

**Jaime Javier Juarez, PhD**

K12 Scholar, NIH

*Utilizing fabrication and optical interrogation techniques to improve flow cytometry particle detection at the nanoscale and at high speed*

Mentors: Andrew Shreve, PhD; Keith Lidke, PhD

## UNM HEALTH SCIENCES TRAINING GRANTS

**Britta E. Lindquist, MD/PhD Candidate**

F31 Recipient, NIH/NINDS

*Studying how adenosine accumulation following spreading depolarization in ischemia contributes to progression of stroke injury*

Mentor: Bill Shuttleworth, PhD

**Levi Maston, MD/PhD Candidate**

F30 Recipient, NIH/NHLBI

*Investigating inflammatory mechanisms of that underlie the progression of pulmonary hypertension resulting from long-term exposure to hypoxia.*

Mentors: Laura Gonzalez Bosc, PhD; Thomas Resta, PhD; Judy Cannon, PhD

**Mary Beth Logue, Medical Student**

K05 Scholar, NIH/NCI

*Skin cancer risk behavior among Native Americans in New Mexico*

Mentor: Marianne Berwick, PhD, MPH

**Sowmiya Murali, Medical Student**

K05 Scholar, NIH/NCI

*Risk factors for ulceration in melanoma*

Mentor: Marianne Berwick, PhD, MPH

**Lindsey Long, PhD**

K12 Scholar, NIH

*The role of histone modification in transcriptional regulation of yeast cell interconversion between quiescence and normal proliferative states and its relevance to stem cell behaviors and cancer*

Mentor: Mary Ann Osley, PhD

**Prashant Nighot, DVM, PhD**

K01 Scholar, NIH

*Inflammatory bowel disease*

**Christy Magcalas, PhD Candidate**

T32 Recipient, NIH/NIAAA

*How exposure to ethanol and ketamine during adolescence alters glutamatergic receptor function in the frontal cortex and related behavioral outcomes*

Mentor: Derek Hamilton, PhD

**Sarah Pirio Richardson, MD**

KL2 Scholar, CTSC

*Using non-invasive transcranial magnetic stimulation, to improve symptoms and quality of life in patients with movement disorders*

Mentors: Bill Shuttleworth, PhD; Leslie Morrison, MD

**Kristopher D. Marjon, PhD**

T32 Recipient, NIH

*Mechanisms of hematopoietic stem/progenitor cell homing and cell adhesion to specific microenvironments*

Mentor: Jennifer Gillette, PhD

**Dominique Price, PhD Candidate**

T32 Recipient, NIH/NIAID

*Infectious disease, immunology, vaccines and tuberculosis*

Mentor: Pavan Muttli, PhD

**Kristin L. Marquardt, PhD Candidate**

T32 Recipient, NIH/NIAAA

*Understanding how prenatal alcohol exposure alters prefrontal cortex and striatal function by using a mouse model of moderate prenatal alcohol exposure paired with in vivo electrophysiology.*

Mentor: Jonathan Brigman, PhD

**Danielle Protas, PhD**

K12 Scholar, NIH

*The mechanisms of depolarization in spreading depression*

Mentor: Bill Shuttleworth, PhD

**Martha Martinez Grimes, PhD**

K12 Scholar, NIH

*Elucidating the pathogenicity of Candida albicans and determining how vacuolar ATPase contributes to infection and virulence.*

Mentor: Karlett Parra, PhD

**Anita L. Ray, PhD Candidate**

T32 Recipient

*The role of inflammation in colorectal cancer and potential immunotherapeutic targets*

Mentor: Ellen Beswick, PhD



**Katelyn Reinhart, PhD Candidate**

T32 Recipient, NIH

*Spreading depolarization and the basic physiological mechanisms that contribute to the progression of brain injuries, including stroke*

Mentor: Bill Shuttleworth, PhD

**Lauren Topper, PhD Candidate**

T32 Recipient, NIH/NIAAA

*Effects of developmental ethanol exposure on neuroinflammation*

Mentor: C. Fernando Valenzuela, MD, PhD

**Chelsea Saito-Reis, PhD Candidate**

T32 Recipient, NIH

*Role of CD2 in regulating hematopoietic stem cell adhesion and signaling*

Mentor: Jennifer Gillette, PhD

**Christina R. Tyler, PhD**

F31 Recipient, NIH/NIMH

*The epigenetic link between environmental exposure and adult-onset depression*

Mentor: Andrea M. Allan, PhD

**Sabrina L. Samudio-Ruiz, PhD**

K01 Scholar, NIH

*Alterations in gene expression, intracellular signaling pathways and DNA methylation associated with the development of platinum resistance in ovarian cancer***Heather Ward, PhD**

K01 Scholar, NIH

*Targeting fibrosis in polycystic kidney disease*

Mentor: Angela Wandinger-Ness, PhD

**Montaser Shaheen, MD**

K01 Scholar, NIH/NHLBI

*The role of hPso4 in DNA repair and chemotherapy resistance*

Mentor: Alan Tomkinson, PhD

**Sonlee West, MD**

KL2 Scholar, CTSC

*Immune response to trauma*

Mentors: Arup Das, MD, PhD; Carolyn Mold, PhD

**Joshua Sheak, MD/PhD Candidate**

T32 Recipient, NIH

*Investigating the contribution of a novel intracellular signaling pathway to pulmonary hypertension in infants using an animal model of neonatal pulmonary hypertension*

Mentor: Thomas Resta, PhD

**Kirsten White, PhD Candidate**

K05 Scholar, NIH/NCI

*Autophagy and oncogene status in melanoma*

Mentors: Marianne Berwick, PhD, MPH; Chien-An Hu, PhD

**Laurie Steffen, PhD Candidate on Internship**

K05 Scholar, NIH/NCI

*Late-stage lung cancer and coping*

Mentor: Bruce Smith, PhD

**Claire Wilcox, MD**

K23 Scholar, NIH

*Neural mechanisms of change during the treatment of alcohol use disorders*

Mentor: Michael Bogenschutz, MD

**Christina Termini, PhD Candidate**

F31 Recipient, NIH

*Identify the mechanisms and molecules that regulate hematopoietic stem/progenitor cell (HSPC) adhesion to the microenvironment to provide clinical targets to enhance HSPC transplantation therapies*

Mentors: Jennifer Gillette, PhD; Angela Wandinger-Ness, PhD

**Kayla R. Zehr, PhD Candidate**

T32 Recipient, NIH/NHLBI

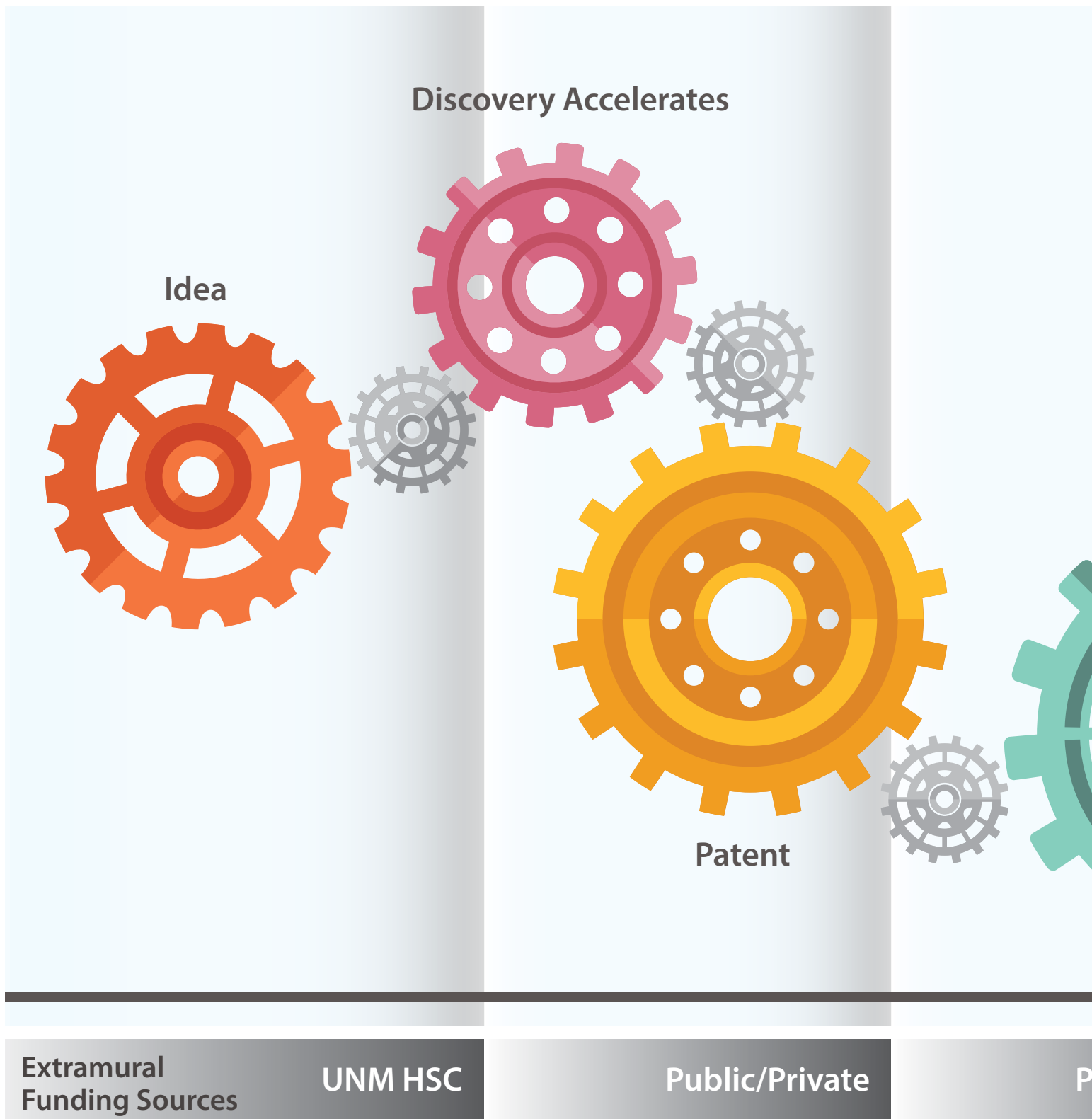
*How omega-3 polyunsaturated fatty acids mediate dilatory and antioxidant effects in the vasculature and protect blood vessels from xenobiotic-induced oxidative stress and dysfunction.*

Mentor: Mary Walker, PhD

Unavailable for photos: Christopher Hughes; Jenna Lilyquist, PhD; John Pinner

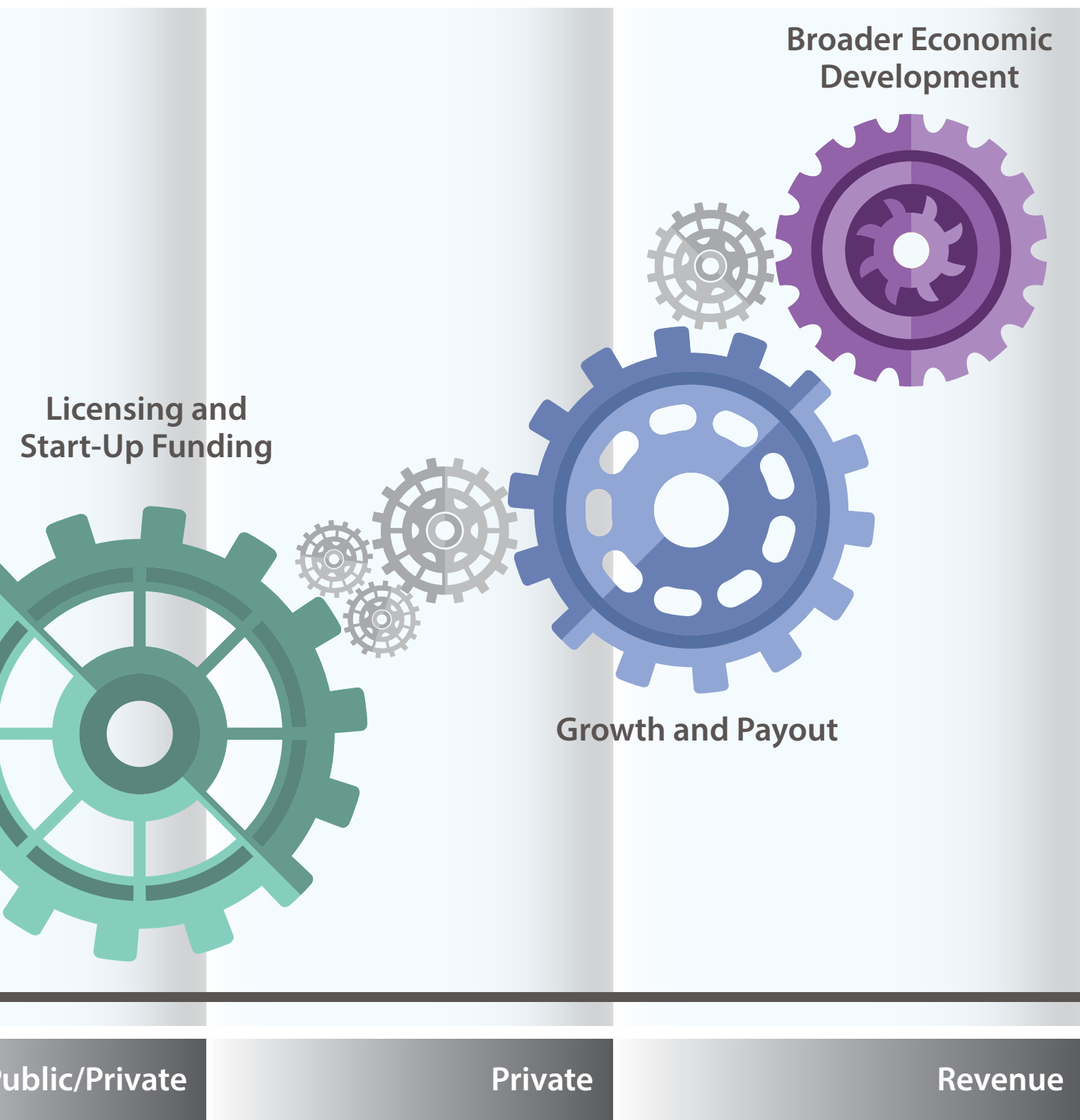
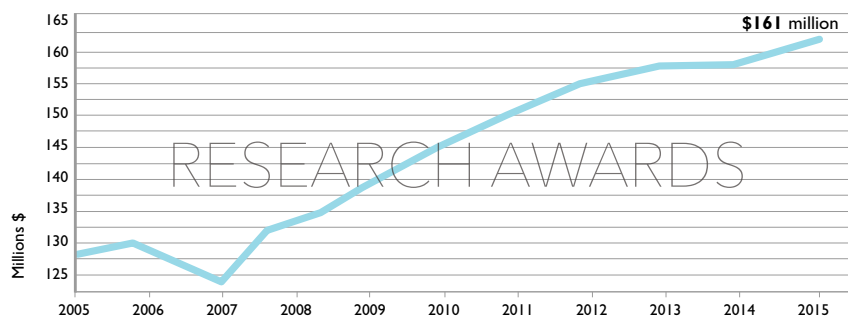
# Giving Life to Innovation

## HOW PUBLIC-PRIVATE PARTNERSHIPS PROMOTE BIOTECHNOLOGY





# tion



## 2015 EXCELLENCE IN RESEARCH AWARDS



*Left to right: Vojo Deretic, PhD; Ludmila Bakhireva, PhD, MD, MPH; Richard Larson, MD, PhD; Mark Burge, MD; Corey Ford, MD, PhD; Andrea Allan, PhD; Jennifer Gillette, PhD; Paul B. Roth, MD, MS.*

**Award recipients were recognized for their excellence in research in five categories:**

BASIC SCIENCE

CLINICAL SCIENCE

JUNIOR FACULTY

POPULATION SCIENCE

TEAM SCIENCE







**The Seventh Annual Research Day Awards** Ceremony was held on October 29, 2015. For the Excellence in Research Awards, five colleagues were nominated by their peers and selected by a faculty committee for outstanding contributions in the categories of Basic Science, Clinical Science, Junior Faculty and Population Science. This year, a collaboration-focused award - Team Science - was added.



**Mark Burge, MD**  
*Clinical Science*

Born into a family affected by diabetes (and contracting it himself in college), Mark Burge always knew he would one day study the disease. His research has focused on improving treatments for Type 1 and 2 diabetes since he joined the faculty in 1993. "Everything I've learned about research and scholarly achievement comes from a small community of phenomenally accomplished academic clinical researchers at UNM," he says.



**Vojo Deretic, PhD**  
*Basic Science*

Vojo Deretic pioneered the understanding of autophagy. "Cells actually have a process to cleanse their interiors that we did not know existed just a decade ago," he says. His discoveries may lead to treatments for Crohn's disease, HIV and tuberculosis, among others.

"I am particularly proud of this award," he says. "I'm thankful to our institution and environment here for allowing me to pursue my scientific endeavors to the fullest."



**Ludmila Bakhireva, PhD, MD, MPH**  
*Population Science*

Ludmila Bakhireva works to minimize health disparities among vulnerable populations. She has identified biomarkers of prenatal alcohol exposure and is studying the combined effects of alcohol, arsenic and uranium exposure on Navajo children. "These patients genuinely want to contribute to research," she says. "They see it as an opportunity for change, to have their stories heard, to help their child and to make a contribution to their community."



**Andrea Allan, PhD**  
*Team Science*

"Team-oriented science is fast becoming the norm," says Andrea Allan. "With each of us bringing to a project our expertise, knowledge and curiosity, we broaden our perspective and strengthen our findings." Allan has played a key role in more than a dozen

programmatic initiatives and signature programs in the past decade. Echoing Sir Isaac Newton, she says, "One can see deeper by standing on the shoulders of giants."



**Jennifer Gillette, PhD**  
*Junior Faculty*

Jennifer Gillette has focused on bone marrow engraftment and homing of stem cells mediated by CD82 in the short time since she joined UNM in 2010. She is developing translational approaches to expand her research program by partnering with and mentoring clinician scientists. "I attribute much of my success to the talent, hard work and dedication of the trainees with whom I've been privileged to work," she says.

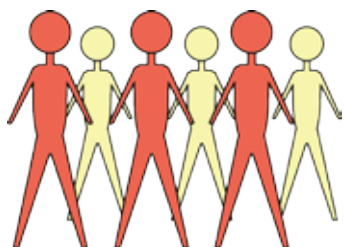
# BY THE NUMBERS

## UNM HSC RESEARCH 2015



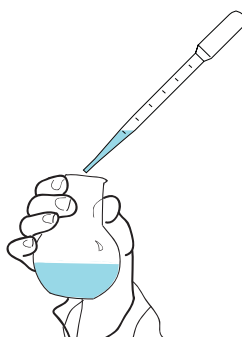
**\$160,753,570**

Total awards in FY 2015



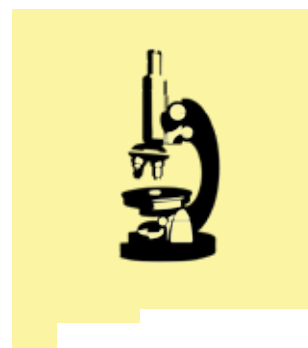
**1,178**

Total full-time faculty



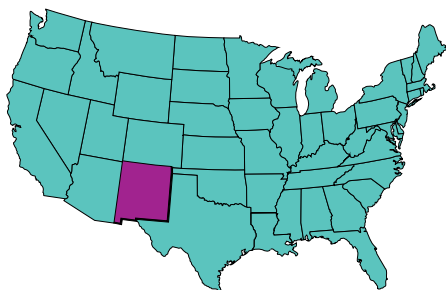
**306**

Principal investigators  
extramurally funded



**85**

Community research  
sites in New Mexico



**1 of 29**

National institutions with both a  
Clinical and Translational Science Award  
and a Cancer Center with  
NCI Comprehensive Designation



**38**

Business startups  
over 10 years



**849**

Proposals awarded



# UNM HEALTH SCIENCES CENTER CONTRACTS AND GRANTS FY 2015

Chancellor for Health Sciences .....	36
Financial Aid .....	36
Health Sciences Library and Informatics Center .....	36
Office of Research .....	36
Animal Resource Facility .....	36
Biomedical Research Educational Program .....	36
Clinical & Translational Science Center .....	36
College of Nursing .....	36
College of Pharmacy .....	37
Poison Control .....	39
School of Medicine .....	39
Anesthesiology .....	39
Biochemistry and Molecular Biology .....	39
Brain and Behavioral Health Institute .....	39
Cancer Research and Treatment Center .....	40
Cell Biology and Physiology .....	42
Center for Infectious Disease and Immunity .....	42
Continuing Medical Education .....	42
Dental Medicine .....	43
Dermatology .....	43
ECHO Institute .....	43
Emergency Medicine .....	43
Family and Community Medicine .....	45
Internal Medicine .....	46
Molecular Genetics and Microbiology .....	49
Neurology .....	49
Neurosciences .....	50
Neurosurgery .....	51
New Mexico Tumor Registry .....	51
Obstetrics and Gynecology .....	51
Office of the Medical Investigator .....	52
Orthopaedics .....	52
Pathology .....	52
Pediatrics .....	54
Pediatrics Center for Development and Disability .....	56
Pediatrics Prevention and Population Sciences .....	57
Psychiatry and Behavioral Sciences .....	58
Radiology .....	59
Surgery .....	59
Undergraduate Medical Education .....	60
UNM Hospital .....	60
UNM Medical Group .....	60
UNM Sandoval Regional Medical Center .....	60

FY 2015 (JULY 1, 2014 - JUNE 30, 2015)

## CHANCELLOR FOR HEALTH SCIENCES

### RICHARD LARSON

UNM Foundation..... \$477,944  
*Private Gifts for Research*

UNM Foundation..... \$351,435  
*Private Gifts for Research*

UNM Foundation..... \$317,472  
*Private Gifts for Research*

UNM Foundation..... \$245,542  
*Private Gifts for Research*

### Financial Aid

### MARY FENTON

HHS/Health Resources and Services Administration ..... \$650,000  
*ACA-Scholarship for Disadvantaged Students - Allopathic Medicine*

HHS/Health Resources and Services Administration ..... \$206,496  
*ACA-Scholarship for Disadvantaged Students - Medical Laboratory Science*

## HEALTH SCIENCES LIBRARY AND INFORMATICS CENTER

### ANDRAS AMBRUS

NIH/National Library of Medicine ..... \$700  
*Professional Development Award - Bioinformatics Classes*

### PATRICIA BRADLEY

Center for Public Service Communications ..... \$20,000  
*Native Voices Community Outreach*

NIH/National Library of Medicine ..... \$15,000  
*Maintaining the Health Information Network for New Mexico (Outreach)*

### GALE HANNIGAN

National Network of Libraries of Medicine..... \$8,000  
*Ps (Partners) for PODS: Engaging School Libraries in Points of Dispensing Disaster Preparedness Activities*

### PHILIP KROTH

HHS/Agency for Healthcare Research and Quality ..... \$193,326  
*Minimizing Stress, Maximizing Success of Physician's Use of Health Information and Communications Technologies*

## OFFICE OF RESEARCH

### RICHARD LARSON

Lovelace Respiratory Research Institute ..... \$48,957  
*BSGP Administrative Support Agreement*

Lovelace Respiratory Research Institute ..... \$9,474  
*BSGP Administrative Support for Fellowships*

### PAUL ROTH AND RICHARD LARSON

Association of American Medical Colleges ..... \$107,100  
*Developing a Workforce to Improve Health and Reduce Disparities*

## Animal Resource Facility

### RICHARD LARSON

New Mexico VA Health Care System..... \$26,050  
*Veterinary Services*

## Biomedical Research Educational Program

### RICHARD LARSON

Lovelace Respiratory Research Institute ..... \$72,727  
*BSGP Fellowship Agreement*

Lovelace Respiratory Research Institute ..... \$38,355  
*BSGP Fellowship Support*

## CLINICAL & TRANSLATIONAL SCIENCE CENTER

### MARK BURGE

National Institutes of Health ..... \$10,514  
*Iron-Induced Oxidative Stress and Mitochondrial Dysfunction: Effects on Insulin Secretion and Insulin Sensitivity*

### DAWN DELFIN

American Heart Association ..... \$140,000  
*Stem Cell Adherence to the ECM of Remodeled Heart*

### JON KENNETH FEMLING

Emergency Medicine Foundation..... \$50,000  
*Translating Quorum Sensing Inhibitions to Human S. Aureus Infections*

### ALBERTA KONG

NIH/National Heart, Lung, and Blood Institute..... \$715,619  
*ACTION PAC: Adolescents Committed to Improvement of Nutrition & Physical Activity*

### RICHARD LARSON

NIH/National Center for Advancing Translational Sciences ..... \$4,941,544  
*UNM Clinical & Translational Science Center\**

NIH/National Institute of General Medical Science..... \$774,307  
*Clinical and Translational Research Infrastructure Network IDeA-CTR/CRDEB*

National Institutes of Health ..... \$129,960  
*UNM Clinical & Translational Science Center - Supplement*

NIH/National Center for Advancing Translational Sciences ..... \$111,529  
*Enhancing Clinical Research Professionals' Training and Qualifications*

### SONLEE DENISE WEST

Bio2 Medical ..... \$152,714  
*Clinical Trial Agreement (Device)*

### ROBERT WILLIAMS

National Institutes of Health ..... \$300,241  
*ACA-NM CARES HD - Pilot Research Projects*

## COLLEGE OF NURSING

### BLAKE BOURSAB

New Mexico Higher Education Department ..... \$13,836  
*Performance-Based Funding Metrics for Higher Education: The Case of New Mexico in FY 17*



Ellen Hatch

\* initiated in FY14 and continued in FY15 and part of FY16



## SALLY COHEN

American Academy of Nursing .....\$90,000  
*IOM-AAN, ANA, ANF Distinguished Nurse Scholar in Residence*

## EMILY HAOZOUS

Feinstein Kean Healthcare .....\$14,500  
*Study of Trinity Radiation Doses and Cancer Risks Resulting from 1945 "Trinity" Atomic Weapon Test*

Social & Scientific Systems .....\$10,610  
*Study of Trinity Radiation Doses and Cancer Risks*

Feinstein Kean Healthcare .....\$6,000  
*Study of Trinity Radiation Doses and Cancer Risks*

Spirit of EAGLES .....\$2,500  
*Hampton Faculty Fellows Program Cohort II*

## STEPHEN HERNANDEZ

Uniformed Services University of the Health Sciences .....\$99,384  
*Stress, Resilience, Stigma & Barriers to Mental Health Care Among Air Force Nursing Personnel*

## SHANA (SUZANNE) MARIE JUDGE

Robert Wood Johnson Foundation .....\$1,278,913  
*Nursing and Health Policy Collaborative at UNM*

## AMY JO LEVI

HHS/Health Resources and Services Administration .....\$350,000  
*ACA-Advanced Education Nursing Traineeships*

HHS/Health Resources and Services Administration .....\$350,000  
*ACA-Advanced Education Nursing Traineeships*

HRSA/Bureau of Primary Health Care .....\$52,261  
*ACA-Nurse Faculty Loan Program (NFLP) FY 16*

University of California, San Francisco .....\$12,272  
*Early Pregnancy Loss*

## JUDY LIESVELD

Robert Wood Johnson Foundation .....\$300,000  
*Academic Progression in Nursing*

New Mexico Board of Nursing .....\$158,771  
*New Mexico Nursing Education Statewide Planning*

## NANCY MORTON

New Mexico VA Health Care System .....\$436,561  
*VA Nursing Academic Partnerships IPA: Marisa Francis (Years 2-4)*

New Mexico VA Health Care System .....\$399,406  
*VA Nursing Academic Partnerships IPA: Kimberly Madden*

## BARBARA ANN OVERMAN

El Pueblo Health Services .....\$5,784  
*El Pueblo Health Services*

## NANCY RIDENOUR

City of Albuquerque .....\$133,000  
*Health Services Coordination*

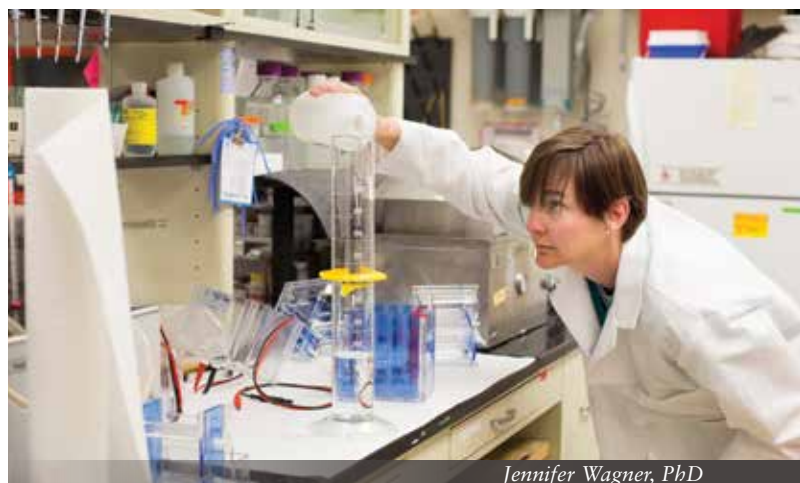
City of Albuquerque .....\$67,000  
*Geriatric Education and Health Maintenance Clinic*

## STEPHEN VAN ROPER

ACE Leadership High School .....\$58,319  
*The Board of Architecture, Construction, and Engineering Leadership High School*

ABQ Health Partners LLC .....\$54,870  
*ABQ Health Partners Contract - BAA*

First Nations Community Healthsource, Inc. ....\$52,171  
*First Nations Community Healthsource, Inc. Service Agreement*



Jennifer Wagner, PhD

Presbyterian Healthcare Services .....\$29,291  
*Certified Nurse Practitioner Services*

## COLLEGE OF PHARMACY

### JOE ANDERSON

New Mexico Department of Health .....\$30,004  
*Health Systems Data Management and Use of Team-Based Health Care*

### LUDMILA BAKHIREVA

NIH/National Institute on Alcohol Abuse and Alcoholism .....\$569,811  
*Early Indices of Atypical Neurodevelopment with Fetal Alcohol Exposure*

University of California, San Diego .....\$48,000  
*Organization of Teratology Information Specialists Research Network*

Texas Department of Health .....\$24,000  
*Texas Office of Prevention of Development Disabilities*

### SCOTT BURCHIEL

NIH/National Institute of Environmental Health Sciences .....\$729,080  
*Synergistic Immunosuppression by PAHs and Arsenite*

### MATTHEW CAMPEN

NIH/National Institute of Environmental Health Sciences .....\$362,313  
*Enhancement of Coronary Constriction by Volatile Organic Air Toxics*

National Institutes of Health .....\$75,500  
*Chronic Particulate Matter Exposure, Inflammation and Atherogenesis in At-Risk Children*

University of Washington .....\$39,405  
*Cardiovascular Consequences of Immune Modification by Traffic-Related Emissions*

University of Washington .....\$39,405  
*Cardiovascular Consequences of Immune Modification by Traffic-Related Emissions*

### CATHERINE CONE

Sandia Staffing Alliance .....\$26,641  
*Sandia National Laboratories Clinic - BAA*

### ESZTER ERDEI

Black Hills Center for American Indian Health .....\$111,167  
*Complex Metal Exposure and Immune Status on the Cheyenne River*

### LARRY GEORGOPOULOS

New Mexico Heart Institute .....\$250,000  
*Radiopharmaceutical Goods and Services*

UNM Medical Group .....\$100,000  
*Molina Telephonic MTM Agreement*



Genevieve Phillips

### LARRY GEORGOPOULOS (CONTINUED)

ABQ Health Partners LLC.....	\$90,000
<i>ABQ Health Partners - Radiopharmaceutical Products</i>	
Cardiac Care Consultants of New Mexico.....	\$90,000
<i>Professional Services Agreement - Cardiac Care Consultants</i>	
First Choice Community Healthcare.....	\$81,060
<i>Pharmacist Consultant Agreement - BAA</i>	
Translational Radiopharmacy.....	\$60,000
<i>Preparation of 90Y-SirSpheres</i>	
New Mexico Health Connections.....	\$18,000
<i>New Mexico Health Connections Contract Review and Consultation</i>	
First Nations Community Healthsource, Inc.....	\$2,500
<i>First Nations Community Healthsource</i>	

### PAMELA HALL

NIH/National Institute of Allergy and Infectious Diseases.....	\$397,470
<i>Apolipoprotein B and Control of S. Aureus Quorum Sensing</i>	
NIH/National Institute of Allergy and Infectious Diseases.....	\$226,500
<i>VLP-Based Vaccines for Targeting Staphylococcus aureus-Secreted Virulence Factors</i>	
Sandia National Laboratories.....	\$45,300
<i>Optimization of Mesoporous Silica Nanoparticle-Supported Lipid Bilayers ('Protocells') for In Vivo Delivery of Antibiotic Compounds</i>	

### AJNA HAMIDOVIC

NIH/National Institutes of Health.....	\$75,500
<i>Intranasal Insulin Treatment for Weight Management During Smoking Cessation</i>	

### LAURIE HUDSON

NIH/National Institutes of Health.....	\$386,049
<i>Arsenic Co-Carcinogenesis with UVR: Nitrosation and Oxidation of Target Proteins</i>	
NIH/National Institutes of Health.....	\$313,325
<i>Zinc Chemoprevention of Arsenic Co-Carcinogenesis</i>	

### JOHNNYE LEWIS

HHS/Centers for Disease Control and Prevention.....	\$1,000,000
<i>ACA-A Prospective Birth Cohort Study Involving Uranium Exposure in the Navajo Nation</i>	
HHS/Centers for Disease Control and Prevention.....	\$360,000
<i>Navajo Birth Cohort Study (Mother/Infant Supplement)</i>	
National Institutes of Health.....	\$156,241
<i>Wood Stove Interventions and Child Respiratory Infections in Rural Communities</i>	

### JIM LIU

NIH/National Institute of Environmental Health Sciences.....	\$339,750
<i>Arsenic Co-Carcinogenesis with UVR: Nitrosation and Oxidation of Target Proteins</i>	
NIH/National Institute on Drug Abuse.....	\$187,425
<i>Methamphetamine-Induced Alterations in Brain Tissue Oxygenation</i>	
National Institutes of Health.....	\$52,370
<i>Particulate Cr(VI) Toxicology in Human Lung Epithelial Cells and Fibroblasts</i>	
Massachusetts General Hospital.....	\$10,000
<i>General Anesthesia and Alzheimer's Disease Neuropathogenesis</i>	
National Institutes of Health.....	\$9,062
<i>Particulate Cr(VI) Toxicology in Human Lung Epithelial Cells and Fibroblasts</i>	

### RENEE-CLAUDE MERCIER

TriCore Reference Laboratories.....	\$54,094
<i>Pharmacy Residency Affiliation Agreement</i>	
International Health Management Associates, Inc.....	\$2,650
<i>Evaluation of Ceftazidime Avibactam</i>	

### PAVAN MUTTIL

Sandia National Laboratories.....	\$100,000
<i>NATV DTRA</i>	

### JEFFREY NOREMBERG

inviCRO.....	\$61,856
<i>Task 31: PK/Biodistribution Study</i>	
inviCRO.....	\$29,000
<i>Task 32: Plasma Pharmacokinetic Testing Study</i>	

### DENNIS RAISCH

National Institutes of Health.....	\$30,000
<i>Southern Oncology Network on Adverse Reactions (SONAR)</i>	

### SABRINA SAMUDIO-RUIZ

NIH/National Cancer Institute.....	\$129,216
<i>EGF Receptor, DNA Methylation and Platinum Resistance in Ovarian Cancer</i>	

### SUSAN SMOLINSKE

Denver Health and Hospital Authority.....	\$18,623
<i>RADARS System Work Order #1</i>	
Denver Health and Hospital Authority.....	\$1,562
<i>RADARS System Work Order #2</i>	
Denver Health and Hospital Authority.....	\$1,562
<i>RADARS System Work Order #3</i>	

### GRAHAM TIMMINS

NIH/National Institute of Allergy and Infectious Diseases.....	\$188,750
<i>Pyrazinamide Breath Test for TB</i>	
Johnson & Johnson.....	\$6,938
<i>An Initial Analysis of MPF Methodology for Sunscreen Assessment</i>	

### MARY WALKER

American Heart Association.....	\$140,000
<i>Cytochrome P4501A1 and Endothelial Dysfunction</i>	

### CARLA WALRAVEN

Durata Therapeutics, Inc.....	\$7,500
<i>Acute Bacterial Skin and Skin Practice Pattern Assessment Project - Site 102</i>	
Durata Therapeutics, Inc.....	\$7,500
<i>Acute Bacterial Skin and Skin Practice Pattern Assessment Project - Site 102</i>	



**TRACI WHITE**

Mesilla Valley Hospice .....\$35,152  
*Mesilla Valley Hospice Pharmacists Clinician Agreement*

**KRISTINA WITTSTROM**

Sandia National Laboratories .....\$2,100  
*SNL Isotope Request - PRN Services*

**Poison Control****SUSAN SMOLINSKE**

HHS/Health Resources and Services Administration ..... \$115,158  
*Poison Control Stabilization And Enhancement Program*

**SCHOOL OF MEDICINE****DAVID PITCHER**

New Mexico Department of Health .....\$1,125,355  
*Sustain Level I Trauma Center Designation & Improve Financial Viability of Trauma Services*

New Mexico Department of Health .....\$1,125,355  
*Sustain Level I Trauma Center Designation & Improve Financial Viability of Trauma Services*

**MICHAEL RICHARDS**

New Mexico Department of Health ..... \$140,450  
*Locum Tenens Services for Turquoise Lodge Hospital*

New Mexico Department of Health .....\$50,000  
*Locum Tenens Services for Turquoise Lodge Hospital*

New Mexico Department of Health .....\$50,000  
*Psychiatric Services for New Mexico Behavioral Health Institute Patients*

**Anesthesiology****EUGENE KOSHKIN**

Boston Scientific Corporation .....\$15,000  
*UNM Pain Medicine Fellowship*

Medtronic .....\$15,000  
*UNM Pain Medicine Fellowship*

St. Jude Medical .....\$15,000  
*UNM Pain Medicine Fellowship*

**JONATHAN MARINARO**

Kindred Hospital (Transitional Hospitals Corp. of NM) .....\$64,800  
*Medical Director*

**ISAAC TAWIL**

DCI Donor Services .....\$8,240  
*Medical Director Services*

**Biochemistry and Molecular Biology****NATALIE ADOLPHI**

Sandia National Laboratories ..... \$170,000  
*Biodistribution of Mesoporous Silica Nanoparticle-Supported Lipid Bilayer Platform*

**JEFFREY GRIFFITH**

National Institutes of Health ..... \$686,030  
*New Mexico IDeA Networks of Biomedical Research Excellence*

National Institutes of Health .....\$62,697  
*New Mexico IDeA Networks of Biomedical Research Excellence*

**CHIEN-AN ANDY HU**

Children's National Medical Center .....\$10,117  
*Role of Cytokines and APOL-1 in the Pathogenesis of Childhood HIV Associated Nephropathy*

**MEILIAN LIU**

American Heart Association ..... \$140,000  
*mTORC1 and Autophagy in Human Brown Adipocytes*

American Diabetes Association, Inc. .... \$124,200  
*The Role of DsbA-L in Regulating Liver Mitochondria Function and Insulin Sensitivity*

**KRISTINA TRUJILLO**

NIH/National Cancer Institute ..... \$345,413  
*Is Tumor-Adjacent Histologically Normal Tissue Primed for Tumorigenesis Through the TGF(beta) Pathway?*

ExoVita BioSciences .....\$24,443  
*Development of Exosomes from Field-Cancerized Fibroblasts as a Cancer Therapeutic*

**Brain and Behavioral Health Institute****CLAUDE SHUTTLEWORTH**

Patient-Centered Outcomes Research Institute ..... \$123,965  
*ACA-Pathways to Partnership: Communication and Collaboration Skills for Creating PCORI Teams*

**ROBERT THOMA**

New Mexico Governor's Commission on Disability .....\$50,000  
*Brain Injury Study on the Veteran Population of New Mexico*

**JOHN WEAVER**

Eastern New Mexico University .....\$8,500  
*Vascular Mechanisms of Oxidative Stress and Insulin Regulation in Metabolic Syndrome*

**YIRONG YANG**

Lovelace Respiratory Research Institute .....\$3,600  
*Exploration of Potential Neuroprotective Effects of Ketamine in Rodents Exposed to Organophosphates*

**YIRONG YANG**

Lovelace Respiratory Research Institute .....\$1,500  
*Exploration of Potential Neuroprotective Effects of Ketamine in Rodents Exposed to Organophosphates*



Andre Moezzi

## Cancer Research and Treatment Center

### SARAH ADAMS

Ovarian Cancer Research Fund, Inc. .... \$200,000  
*A Combination Therapy for Hereditary Ovarian Cancer*

Oxnard Foundation.....\$80,000  
*Targeting DNA Repair Pathways to Sensitize Ovarian Tumors to Immune Therapy*

Phi Beta Psi Charity Trust .....\$54,130  
*IL 10 Blockade to Restrict Intraperitoneal Ovarian Cancer Metastasis*

### CECILIA ARANA YI

New Mexico Cancer Care Alliance..... \$100,956  
*Clinical Trial Agreement - Phase 3*

New Mexico Cancer Care Alliance..... \$100,557  
*Clinical Trial Agreement - Phase 2*

New Mexico Cancer Care Alliance.....\$86,445  
*Clinical Trial Agreement - Phase 1*

New Mexico Cancer Care Alliance.....\$85,244  
*Clinical Trial Subaward - Phase 2*

New Mexico Cancer Care Alliance.....\$85,103  
*Clinical Trial Agreements - Phase 3*

New Mexico Cancer Care Alliance.....\$54,240  
*Clinical Trial Agreements - Phase 3 (2009)*

### WADIH ARAP

NIH/National Heart, Lung and Blood Institute..... \$366,250  
*Regulation of the Paracrine Angiogenic Function of Cardiac Myocytes by Cardiomycocyte PDGFR- $\alpha$*

### MARIANNE BERWICK

Memorial Sloan Kettering Cancer Center ..... \$244,632  
*Personalized Genomic Testing for Melanoma: Maximizing Personal Utility and Research*

NIH/National Cancer Institute..... \$156,292  
*Melanoma Prevention: Using the Sun*

### URSA BROWN-GLABERMAN

New Mexico Cancer Care Alliance..... \$135,446  
*Clinical Trial Subaward - Phase 3*

New Mexico Cancer Care Alliance..... \$133,889  
*Clinical Trial - Phase 3*

New Mexico Cancer Care Alliance.....\$96,000  
*Clinical Trial Subaward - Phase 2*

New Mexico Cancer Care Alliance.....\$95,727  
*Clinical Trial Agreement - Phase 2*

### LINDA SUE COOK

NIH/National Cancer Institute..... \$505,309  
*Mitochondrial DNA and Ovarian Cancer Risk and Survival*

### BARBARA DAMRON

Consulate of Mexico in Albuquerque.....\$36,000  
*Ventanilla de Salud Program*

New Mexico Department of Health .....\$5,800  
*Master Services Agreement for Native American Cancer Education Project 2014*

### STEVEN EBERHARDT

ECOG-ACRIN Cancer Research Group .....\$76,800  
*ECOG ACRIN (non-federal)*

ECOG-ACRIN Cancer Research Group .....\$75,300  
*ECOG ACRIN (federal)*

### GREGORY GAN

Radiological Society of North America ..... \$152,000  
*Mechanisms of Hedgehog Pathway-Mediated Head and Neck Cancer Radio-Resistance*

New Mexico Cancer Care Alliance.....\$78,447  
*Clinical Trial Agreement - Phase 2*

New Mexico Cancer Care Alliance.....\$74,609  
*Clinical Trial Subaward - Phase 1*

### DEIRDRE HILL

NIH/National Cancer Institute.....\$75,500  
*Biomarkers of Tumor Initiation in Breast Cancer*

Group Health Research Institute .....\$35,607  
*Risk-Based Breast Cancer Screening in Community Settings*

### RICHARD HOFFMAN

National Institutes of Health .....\$10,721  
*Treatment Decisions and Patient-Reported Outcomes in Low-Risk Prostate Cancer*

### HUINING KANG

Gabrielle's Angel Foundation .....\$10,000  
*Statistical Methods for Evaluating Cancer Biomarkers*

### ANITA KINNEY

National Institutes of Health .....\$10,076  
*Health and Socioeconomic Outcomes for Survivors of Adolescent and Young Adult Cancer*

Nancy Floyd Haworth Foundation .....\$4,200  
*Culturally Sensitive Hereditary Breast Cancer Genomic Risk Communication for Hispanic Women*

### RICHARD LAUER

New Mexico Cancer Care Alliance.....\$96,260  
*Clinical Trial Subaward - Phase 2*

New Mexico Cancer Care Alliance.....\$93,391  
*Clinical Trial Agreement - Phase 2*

### FA-CHYI LEE

New Mexico Cancer Care Alliance.....\$44,201  
*Clinical Trial Agreement - Phase 3*

### YU-SHEN LIN

Sandia National Laboratories .....\$30,000  
*Synthesis of Mono-sized Silica Nanoparticles*

### CAROLYN MULLER

NRG Oncology ..... \$312,773  
*NRG (NSABP, RTOG, GOG) (Non-Federal Part)*



Rachel Grattan



NRG Oncology .....	\$287,773
<i>NRG (NSABP, RTOG, GOG) (Federal Part)</i>	
Gynecologic Oncology Group .....	\$52,114
<i>Clinical Trial Subaward - Phase 2</i>	

#### LAURA NERVI

Consulate of Mexico in Albuquerque .....	\$36,000
<i>Ventanilla de Salud Program</i>	
Consulate of Mexico in Albuquerque .....	\$4,000
<i>Ventanilla de Salud Program</i>	

#### SCOTT NESS

NIH/National Cancer Institute .....	\$584,002
<i>Alternative RNA Splicing and Protein Products in Leukemia Outcome (PQ11)</i>	
NIH/National Institute of Dental and Craniofacial Research .....	\$442,617
<i>Mutation and Target Genes in Adenoid Cystic Carcinoma</i>	
NIH/National Institute of Dental and Craniofacial Research .....	\$163,3502
<i>Mutations and Target Genes in Adenoid Cystic Carcinoma (Administrative Supplement)</i>	
NIH/National Institute of Dental and Craniofacial Research .....	\$55,342
<i>Mutations and Target Genes in Adenoid Cystic Carcinoma (Administrative Supplement)</i>	

#### JANET OLIVER

NIH/National Cancer Institute .....	\$351,785
<i>Integrative Cancer Nanoscience and Microsystems Training Center</i>	

#### MICHELLE OZBUN

American Cancer Society .....	\$300,000
<i>Institutional Research Grant</i>	

#### RENATA PASQUALINI

Arrowhead Research Corporation .....	\$160,000
<i>Skeletal Muscle-Targeting Peptides</i>	
NIH/National Eye Institute .....	\$65,318
<i>Targeted Modulation of Angiogenesis by VEGF Peptidomimetic Antagonists</i>	
National Institutes of Health .....	\$56,475
<i>Optical Systems for In-Vivo Molecular Imaging of Cancer</i>	
American Association for Cancer Research .....	\$24,380
<i>Octreotide-Targeted Treatment of Neuroendocrine Tumors of the Pancreas</i>	

#### ERIC PROSSNITZ

NIH/National Institute of General Medical Sciences .....	\$631,245
<i>New Mexico IDeA Networks of Biomedical Research Excellence</i>	
NIH/National Institute of General Medical Sciences .....	\$52,850
<i>New Mexico IDeA Networks of Biomedical Research Excellence</i>	

#### OLIVIER RIXE

Brigham and Women's Hospital .....	\$80,400
<i>Brigham and Women's (Alliance for Clinical Trials in Oncology) - Federal</i>	
Brigham and Women's Hospital .....	\$64,000
<i>Brigham and Women's (Alliance for Clinical Trials in Oncology) - Non-Federal</i>	

#### MELANIE ROYCE

NIH/National Cancer Institute .....	\$1,383,575
<i>Minority-Based Community Clinical Oncology Program</i>	
New Mexico Cancer Care Alliance .....	\$110,555
<i>Clinical Trial Subaward - Phase 2</i>	
New Mexico Cancer Care Alliance .....	\$103,240
<i>Clinical Trial Agreement - Phase 2</i>	



Colleen Fordyce, PhD

New Mexico Cancer Care Alliance .....	\$95,868
<i>Clinical Trial Agreement - Phase 2</i>	
New Mexico Cancer Care Alliance .....	\$84,364
<i>Clinical Trial Agreement - Phase 2</i>	
New Mexico Cancer Care Alliance .....	\$82,055
<i>Clinical Trial - Phase 2</i>	
New Mexico Cancer Care Alliance .....	\$80,374
<i>Clinical Trial Subaward - Phase 2</i>	

#### MONTASER SHAHEEN

New Mexico Cancer Care Alliance .....	\$97,579
<i>Clinical Trial Subaward - Phase 1/2</i>	
New Mexico Cancer Care Alliance .....	\$15,000
<i>Clinical Trial Agreement</i>	

#### LARRY SKLAR

NIH/National Cancer Institute .....	\$230,094
<i>Novel DNA Double Strand Break Repair Targeting Therapeutics for Cancer Treatment</i>	

#### ALAN TOMKINSON

NIH/National Institute of General Medical Sciences .....	\$280,000
<i>Roles of DNA Ligase 1 in Mammalian DNA Metabolism</i>	
NIH/National Institute of General Medical Sciences .....	\$238,580
<i>Cellular Functions of Eukaryotic DNA Ligases</i>	
Lawrence Berkeley National Laboratory .....	\$86,807
<i>Structural Cell Biology of DNA Repair Machines Project</i>	
NIH/National Institute on Aging .....	\$29,000
<i>Fifth US-EU Conference on Repair of Endogenous DNA Damage</i>	

#### CHERYL WILLMAN

NIH/National Cancer Institute .....	\$1,876,081
<i>UNM Cancer Center Support Grant</i>	
Memorial Medical Center .....	\$1,356,618
<i>Professional Services</i>	
NIH/National Cancer Institute .....	\$575,377
<i>Molecular Signatures for Outcome Prediction &amp; Therapeutic Targeting in ALL</i>	
NIH/National Cancer Institute .....	\$559,590
<i>Molecular Signatures for Outcome Prediction &amp; Therapeutic Targeting in ALL</i>	
NIH/National Cancer Institute .....	\$322,235
<i>Peptide-Directed Protocells and Virus-like Particles: New Nanoparticle Platforms for Targeted Cellular Delivery of Multicomponent Cargos</i>	
New York University .....	\$211,307
<i>Targeted Nanotherapeutics for Acute Lymphoblastic Leukemia Therapy</i>	



Gabriela Perales

### CHERYL WILLMAN (CONTINUED)

NIH/National Cancer Institute.....	\$125,000
UNM Cancer Center Support - Community Outreach Capacity Through Community Health Education of National Outreach Network (Supplement #3)	
NIH/National Cancer Institute.....	\$113,250
Cancer Center Support Grant - CURE High School and Undergraduate Student Research Experiences (Supplement #2)	
Children's Hospital of Philadelphia.....	\$99,196
Testing Targeted Therapy in Philadelphia Chromosome-Like (Ph-like) ALL	
NIH/National Cancer Institute.....	\$75,000
UNM Cancer Center Support Grant - CTRP Supplement 2014 (Supplement #1)	
New York University.....	\$61,080
Supplemental Award to LLS SCOR	
NIH/National Cancer Institute.....	\$50,000
UNM Cancer Center Support Grant-Cancer Clinical Investigator Team Leadership Award (Supplement #4)	
University of Colorado - Denver.....	\$37,831
Testing Targeted Therapy in Philadelphia Chromosome-Like (Ph-like) ALL	
Albuquerque Area Indian Health Service.....	\$25,000
IHS Oncology Diagnostic and Therapeutic Services Agreement	
Albuquerque Area Indian Health Service.....	\$25,000
IHS Oncology Diagnostic and Therapeutic Services Agreement	
Montefiore Medical Center.....	\$19,719
Detection and Characterization of Ph-Like ALL in the E1910 Study	
Montefiore Medical Center.....	\$19,719
Detection and Characterization of Ph-Like ALL in the E1910 Study	

### BRIDGET WILSON

NIH/National Institutes of General Medical Sciences.....	\$2,491,967
Center for the Spatiotemporal Modeling of Cell Signaling	

### Cell Biology and Physiology

### OSCAR BIZZOZERO

NIH/National Institute of Neurological Disorders and Stroke.....	\$186,862
Cellular, Molecular and Functional Characterization of Proteasomes in EAE	

### LAURA GONZALEZ BOSC

American Heart Association.....	\$140,000
Adaptive Immunity in Pulmonary Hypertension	

### HELEN HATHAWAY

NIH/National Heart, Lung, and Blood Institute.....	\$371,837
Vascular Smooth Muscle Function in Pulmonary Hypertension	

### NIKKI JERNIGAN

NIH/National Heart, Lung, and Blood Institute.....	\$371,837
Vascular Smooth Muscle Function in Pulmonary Hypertension	

### NANCY KANAGY

NIH/National Heart, Lung, and Blood Institute.....	\$377,500
Hydrogen Sulfide Regulation of Vascular Tone and Blood Pressure	

Dialysis Clinic, Inc.....	\$372,900
Simulated Sleep Apnea Effects on Renal Function and Blood Pressure in CKD Model	

American Heart Association (Western States Affiliate).....	\$140,000
Impaired Hydrogen Sulfide-Induced Vasodilation in Hypertension	

Exhalix, LLC.....	\$64,936
Transdermal H2S-Sensing Device for Monitoring Peripheral Artery Disease	

### ERIC PROSSNITZ

NIH/National Cancer Institute.....	\$313,325
G Protein-Coupled Estrogen Receptor and Breast Carcinogenesis	

### THOMAS RESTA

NIH/National Heart, Lung, and Blood Institute.....	\$31,304
The Role of Adaptive Immunity in Chronic Hypoxia-Induced Pulmonary Hypertension	

### BENJIMEN WALKER

American Heart Association.....	\$140,000
Regulation of Endothelial BK Channels in Chronic Hypoxia	

NIH/National Heart, Lung, and Blood Institute.....	\$124,917
Minority Institutional Research Training Program	

### Center for Infectious Disease and Immunity

### JULIE LOVCHIK

Pulmokine, Inc.....	\$44,068
An Inhaled Dry Powder Formulation for Multi-Drug-Resistant Tuberculosis	

### MICHELLE OZBUN

NIH/National Institute of Allergy and Infectious Diseases.....	\$271,197
Biology of Infectious Disease and Inflammation	

### TERRY WU

DOD/Defense Threat Reduction Agency.....	\$344,725
Evaluation of Novel Subunit Tularemia Vaccines in Rat & Non-Human Primate Aerosol Infection Models	

Sandia National Laboratories.....	\$43,571
Mesoporous Nanoparticle Biodistribution and Efficacy Studies	

GlaxoSmithKline.....	\$29,034
PK Study of GSK944 in Fischer 344 Rats	

Sandia National Laboratories.....	\$28,850
Mesoporous Nanoparticle Biodistribution and Efficacy Studies	

GlaxoSmithKline.....	\$27,634
PK Study of GSK944 in Fischer 344 Rats	

GlaxoSmithKline.....	\$19,242
PK Study of GSK944 in Fischer 344 Rats	

### Continuing Medical Education

### WILLIAM RAYBURN

Sunovion Pharmaceuticals Inc.....	\$178,900
PeerView inReview: Conversation from Polytherapy to Monotherapy and its Viability in the Partial Onset Seizure Setting	



AbbVie ..... \$142,150 <i>PeerView inReview: Improving the Management of Endometriosis: Assessing the Standard of Care and Looking Ahead to New Treatment Options</i>	GE Foundation ..... \$150,000 <i>Project ECHO Developing a Practice Transformation Network to Improve Quality in FQHC's Planning Grant</i>
Celgene Corporation .....\$95,000 <i>PeerView inExchange: A Multiple Myeloma Roundtable: Making Sense of New Evidence for Patient Management</i>	Seattle Indian Health Board ..... \$150,000 <i>Supporting the Enhanced Implementation of Health and Wellness</i>
Novartis .....\$55,000 <i>Moderate to Severe Psoriasis for the Dermatologist</i>	American Academy of Pediatrics ..... \$136,988 <i>Enhancing Child and Youth Epilepsy Care via the ECHO Model (FY 15)</i>
Novartis .....\$55,000 <i>Therapeutic Strategies in Psoriatic Arthritis: Focus on New Agents</i>	American Academy of Pediatrics ..... \$127,000 <i>ECHO AAP Epilepsy Expansion</i>
Lilly USA, LLC.....\$53,000 <i>Moderate to Severe Psoriasis for the Dermatologist</i>	New Mexico Department of Health ..... \$120,270 <i>Hepatitis and HIV Clinical Consultant Project</i>
Celgene Corporation .....\$50,000 <i>PeerView inReview, What's Now, What's Next: Individualizing the Treatment of Patients with Moderate to Severe Psoriasis for the Dermatologist</i>	New Mexico Department of Health ..... \$120,270 <i>Hepatitis and HIV Clinical Consultant Project</i>
Onyx Pharmaceuticals, Inc. ....\$50,000 <i>A Multiple Myeloma Roundtable</i>	Albuquerque Area Indian Health Board, Inc.....\$94,500 <i>Leveraging Project ECHO for a Comprehensive Approach to Health and Wellness in Indian Country</i>
Abbott Laboratories Inc.....\$10,000 <i>Nutrition and Aging: From Cells to Body Systems and Populations</i>	McCune Charitable Foundation.....\$50,000 <i>ECHO Community Health Worker Initiative</i>
Northern Navajo Medical Center.....\$1,580 <i>ALSO Course Payment Purchase Order</i>	Blue Cross Blue Shield of NM .....\$26,693 <i>Supporting New Mexico Clinical Sites' Participation in Project ECHO</i>
<b>Dental Medicine</b>	
<b>GARY CUTTRELL</b>	
New Mexico Higher Education Department .....\$1,000,000 <i>UNM Dental Residency Program</i>	University of California, San Francisco .....\$25,000 <i>Smoking Cessation Leadership Center Collaboration - Justice-Involved Peer Educators</i>
New Mexico Higher Education Department .....\$1,000,000 <i>UNM Dental Residency Program</i>	CDC Foundation .....\$21,550 <i>Project ECHO: Expanding Prevention, Care and Treatment Capacity and Reducing Health Care Costs for Hepatitis C and Other Complex Diseases</i>
Community Dental Services .....\$6,918 <i>Community Dental Services</i>	<b>MIRIAM KAMAROMY</b>
<b>VICKI GIANOPOULOS</b>	The EMMES Corporation..... \$199,603 <i>Clinical Coordinating Center for the NIDA Center for the Clinical Trials Network</i>
HRSA/Office of Rural Health Policy ..... \$500,000 <i>Special Needs Dental Residency Training Program</i>	<b>Emergency Medicine</b>
<b>CHARLES TATLOCK</b>	<b>JUSTIN BACA</b>
New Mexico Department of Health ..... \$242,650 <i>Basic Oral Health Services</i>	National Institutes of Health .....\$75,500 <i>Point-of-Care Tumor Marker Detection for Germ Cell and Epithelial Ovarian</i>
<b>Dermatology</b>	<b>LAURA BANKS</b>
<b>BARRETT ZLOTOFF</b>	New Mexico Department of Transportation..... \$200,000 <i>Pedestrian Safety Initiative</i>
American Medical Group, Inc.....\$15,000 <i>Tele-Dermatology Services</i>	
<b>ECHO Institute</b>	
<b>SANJEEV ARORA</b>	
GE Foundation .....\$3,000,000 <i>Leveraging the ECHO Model to Improve Quality in FQHCs and Transform the US Healthcare System (Year 1)</i>	
Centers for Medicare and Medicaid Services.....\$2,419,027 <i>ACA-Leverage Innovative Care and Coordination Model: Project ECHO</i>	
New Mexico Department of Health ..... \$499,925 <i>UNM HSC Innovations in Telehealth</i>	
Elizabeth Glaser Pediatric AIDS Foundation ..... \$369,985 <i>Implementing Project ECHO to Build Namibian National Capacity to Mentor and Train Providers</i>	



Yambilette Licon-Munoz, MS

## LAURA BANKS (CONTINUED)

New Mexico Crime Victims Reparation Commission . . . . .	\$75,000
<i>Coordination of Domestic Violence Death Review Team</i>	
New Mexico Department of Health . . . . .	\$71,740
<i>Hospital and Health Systems Preparedness Project Addendum</i>	
New Mexico Department of Homeland Security & Emergency Management . . . . .	\$33,750
<i>UNM Multi-Hazard Mitigation Planning</i>	
New Mexico Department of Health . . . . .	\$21,000
<i>Hospital and Health Systems Preparedness Project</i>	
National Association of County and City Health Officials . . . . .	\$15,000
<i>Medical Reserve Corps Volunteer Challenge Award 2014-15</i>	
National Association of County and City Health Officials . . . . .	\$3,500
<i>Medical Reserve Corps Volunteer Capacity Building Award 2014-15</i>	

## DARREN BRAUDE

DOD/Department of the Air Force . . . . .	\$345,457
<i>UNM Educational Services Agreement (Mod 1)</i>	
DOD/Department of the Air Force . . . . .	\$345,457
<i>UNM Educational Services Agreement (Mod 2)</i>	
DOD/Kirtland Air Force Base . . . . .	\$298,152
<i>UNM Educational Services Agreement</i>	
DOD/Kirtland Air Force Base . . . . .	\$298,152
<i>UNM Educational Services Agreement</i>	
DOD/Kirtland Air Force Base . . . . .	\$236,037
<i>UNM Educational Services Agreement</i>	
City of Albuquerque . . . . .	\$74,437
<i>Medical Directorship</i>	
City of Albuquerque . . . . .	\$74,437
<i>Medical Directorship</i>	
City of Albuquerque . . . . .	\$60,000
<i>Medical Directorship</i>	
DOD/Kirtland Air Force Base . . . . .	\$27,670
<i>UNM Educational Services Agreement</i>	
DOD/Kirtland Air Force Base . . . . .	\$24,063
<i>UNM Educational Services Agreement</i>	
City of Albuquerque . . . . .	\$19,056
<i>Paramedic Training Program</i>	

City of Albuquerque . . . . .	\$18,609
<i>Medical Directorship</i>	
Torrance County . . . . .	\$12,000
<i>Medical Director Services</i>	
City of Rio Rancho . . . . .	\$8,000
<i>City of Rio Rancho Fire Department Professional Services</i>	
Town of Cochiti Lake . . . . .	\$3,450
<i>Medical Director Services - BAA</i>	
Motion Picture Set Medics, LLC . . . . .	\$2,604
<i>Professional Services - BAA</i>	

## CAMERON CRANDALL

Boehringer Ingelheim Pharmaceuticals, Inc. . . . .	\$229,543
<i>Clinical Trial - Phase 3</i>	
PPD Development . . . . .	\$132,917
<i>Clinical Trial Agreement - Phase 3</i>	
Shire Human Genetic Therapies, Inc. . . . .	\$50,400
<i>Clinical Trial Agreement - Phase 3 Supplement</i>	
Centers for Disease Control and Prevention . . . . .	\$30,000
<i>IPA-Lynne Fullerton</i>	

## JOY CROOK

U.S. Drug Enforcement Agency . . . . .	\$4,000
<i>DEA Training</i>	

## ANDREW HARRELL

New Mexico Department of Homeland Security & Emergency Management . . . . .	\$43,332
<i>USAR Task Force Medical Direction</i>	
U.S. National Park Service . . . . .	\$24,000
<i>Grand Canyon National Park - EMS Medical Services</i>	
U.S. Forest Service . . . . .	\$3,125
<i>Wilderness First Aid</i>	

## STEVEN McLAUGHLIN

New Mexico State Fair . . . . .	\$49,185
<i>Emergency Medical Services - BAA</i>	
New Mexico Public Safety Department . . . . .	\$48,000
<i>Medical Direction - BAA</i>	
City of Rio Rancho . . . . .	\$35,000
<i>Medical Director Services</i>	
City of Rio Rancho . . . . .	\$35,000
<i>Medical Director Services</i>	
Bernalillo County . . . . .	\$22,370
<i>EMS Refresher Course</i>	
New Mexico Donor Services . . . . .	\$19,777
<i>Medical Director Services</i>	
DCI Donor Services . . . . .	\$11,537
<i>Professional Services - BAA</i>	
Wilderness Medics Inc. . . . .	\$10,000
<i>Medical Director Services</i>	
Valencia Regional Emergency Communication Center . . . . .	\$9,000
<i>Medical Director Services</i>	
City of Rio Rancho . . . . .	\$4,000
<i>Professional Services</i>	
Carlsbad Caverns National Park . . . . .	\$2,400
<i>Emergency Medicine - Medical Director</i>	



Avanika Mahajan, PhD



### BRIAN MOORE

New Mexico Department of Health .....	\$50,000
Statewide Emergency Medical Services Medical Direction Project	
New Mexico Department of Health .....	\$5,000
Statewide Emergency Medical Services Medical Direction Project	

### ROBERT PERRY

New Mexico Department of Health .....	\$12,750
Healthcare Preparedness Program	
New Mexico Department of Health .....	\$10,750
Healthcare Preparedness Program - Behavioral Health	
New Mexico Department of Health .....	\$10,750
Healthcare Preparedness Program - Carrie Tingley	

### MICHAEL RICHARDS

New Mexico Department of Health .....	\$4,550
Rural Trauma Team Development Course Project	

### ROBERT SAPIEN

HHS/Health Resources and Services Administration .....	\$128,933
EMS for Children State Partnership Grant	
New Mexico Department of Health .....	\$50,000
School Nurse Behavioral Health Training	
New Mexico Department of Health .....	\$10,000
NM Child Fatality Review	

### PHILIP SEIDENBERG

Siemens Healthcare Diagnostics, Inc. ....	\$441,730
Clinical Trial Agreement - Phase 4	
Siemens Healthcare Diagnostics, Inc. ....	\$216,320
Clinical Trial Agreement - Phase 4 Supplement	

### STEVEN SEIFERT

American College of Medical Toxicology .....	\$5,000
Participation in Toxic Patient Registry: Snakebite Registry	

### Family and Community Medicine

### WILLIAM ATHAS

New Mexico Department of Health .....	\$30,000
Geospatial Capacity Building	
New Mexico Department of Health .....	\$30,000
Geospatial Capacity Building	

### SALLY BACHOFER

HHS/Health Resources and Services Administration .....	\$234,962
ACA-Residency Training In Primary Care (FY 15)	

### ANTOINETTE BENTON

New Mexico Department of Health .....	\$472,113
Transdisciplinary Evaluation and Support Clinic	
New Mexico Department of Health .....	\$444,843
Transdisciplinary Evaluation and Support Clinic	
New Mexico Human Services Department .....	\$169,400
Pre-Admission Screening and Resident Review (FY 15)	
New Mexico Human Services Department .....	\$50,050
Pre-Admission Screening and Resident Review (Supplement FY 16)	
New Mexico Human Services Department .....	\$50,050
Pre-Admission Screening and Resident Review Supplement (FY 15)	



Michaela Dell'Orco, MS

### LISA CACARI-STONE

Con Alma Health Foundation .....	\$74,000
ACA-Policy Implementation Study	

### DEBORAH HELITZER

University of Texas Health Science Center at Tyler .....	\$88,197
Evaluation Core of the Southwest Center for Agricultural Health, Injury Prevention and Education	

### JENNIFER HETTEMA

NIH/National Institute on Alcohol Abuse and Alcoholism .....	\$156,198
Mentored Research on Improving Alcohol Brief Interventions in Medical Settings	
National Institutes of Health .....	\$149,757
Mentored Research on Improving Alcohol Brief Interventions in Medical Settings	
National Institutes of Health .....	\$143,846
Drug Abuse and HIV Adherence Treatments: A Multi-Level, Comparative Meta Analysis	
National Institutes of Health .....	\$75,500
Meta-Regression to Identify the Impact of SBIRT Structure and Content on Outcome	

National Institutes of Health .....	\$47,143
Mentored Research on Improving Alcohol Brief Interventions in Medical Settings	

National Institutes of Health .....	\$7,571
Drug Abuse and HIV Adherence Treatments: A Multi-level, Comparative Meta-Analysis	

### LAUREN HUND

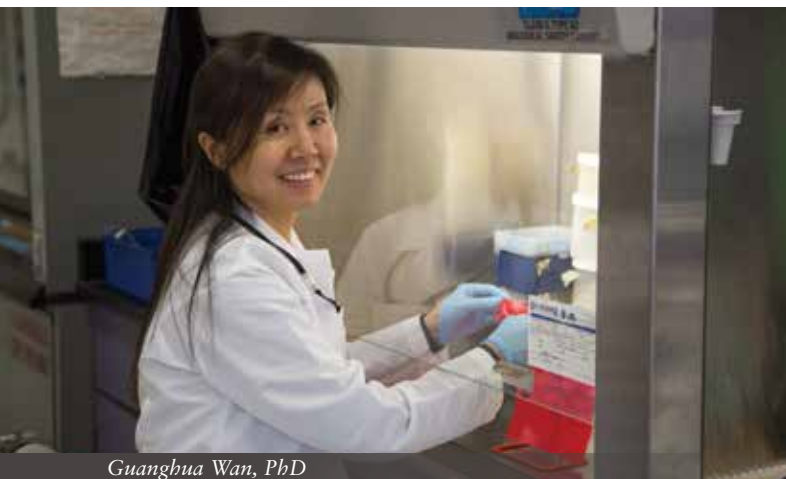
NIH/National Institute of Allergy and Infectious Diseases .....	\$33,000
Accurate and Efficient Measures for HIV Incidence	

### MIRIA KANO

Colorado Foundation for Public Health and the Environment .....	\$24,771
ACA-Building the New Mexico LGBTQ Health Improvement Network: Strengthening Community Health	

### ARTHUR KAUFMAN

New Mexico Department of Health .....	\$426,985
New Mexico Immunization Coalition	
Blue Cross Blue Shield of New Mexico .....	\$224,564
Care NM Services	
HHS/Health Resources and Services Administration .....	\$192,406
New Mexico Community Health Workers Paraprofessional Training	
W.K. Kellogg Foundation .....	\$50,000
Beyond Flexner 2015: Social Mission in Medical Education	



Guanghua Wan, PhD

#### SARAH LATHROP

New Mexico Department of Health .....\$1,148,361  
ACA-New Mexico Emerging Infections Program

#### LAWRENCE LEEMAN

Anonymous Non-Profit Foundation .....\$23,920  
Early Training Grant

#### JOHN LEGGOTT

HHS/Health Resources and Services Administration ..... \$130,000  
Physician Assistant In Primary Care (FY 15)

#### MARTHA COLE MCGREW

UNM Medical Group ..... \$126,637  
Center for Reproductive Health Memorandum of Agreement

Bernalillo County Juvenile Detention Center..... \$105,195  
Professional Physician Services

New Mexico Corrections Department .....\$60,000  
Professional Physician Services

First Choice Community Healthcare.....\$54,080  
First Choice Community Healthcare

Central New Mexico Community College.....\$39,340  
Professional Services

Presbyterian Healthcare Services .....\$25,200  
Professional Services

#### JANET PAGE-REEVES

Bernalillo County.....\$20,600  
Office of Substance Abuse Prevention Bernalillo County Program Evaluation

East Central Ministries .....\$5,499  
ACA-Culturally Appropriate Options for Diabetes Prevention and Care for Low-Income Latinos

#### TASSY PARKER

Molina Healthcare of New Mexico .....\$65,000  
Enhancing Molina Healthcare Services for American Indians in New Mexico

Albuquerque Area Indian Health Board, Inc.....\$52,620  
Tribal Solutions

Albuquerque Area Indian Health Board, Inc.....\$41,945  
Tribal Solutions Grant (NARCH)

National Institutes of Health .....\$18,782  
Healthy Children, Strong Families: American Indian Communities Preventing Obesity

#### REBECCA RAE

Santa Clara Pueblo ..... \$150,000  
Khapoo Owinge RezRIDERS Project

#### ROBERT RHYNE JR.

HHS/Agency for Healthcare Research and Quality ..... \$291,241  
Health Extension Rural Office: Translating Research Into Localities

#### VALERIE ROMERO-LEGGOTT

HHS/Health Resources and Services Administration ..... \$730,111  
Health Career Opportunity Program

Association of Public and Land-grant Universities .....\$5,000  
Shark Tank Pipeline

#### HELENE SILVERBLATT

HHS/Health Resources and Services Administration ..... \$306,000  
ACA-New Mexico Area Health Education Centers

#### GREG TAFOYA

National Congress of American Indians .....\$95,672  
NARCH VII NCAI with UNM: CBPR Dissemination

#### KRISTINE TOLLESTRUP

HHS/Health Resources and Services Administration ..... \$176,138  
New Mexico MCH Public Health Training Institute

HHS/Health Resources and Services Administration ..... \$101,013  
New Mexico Public Health Traineeships in Epidemiology

Tulane University.....\$92,876  
ACA-Region 6 Public Health Training Center

#### NINA WALLERSTEIN

National Institutes of Health ..... \$584,115  
Family Listening Project: Multi-Tribal Implementation and Evaluation

Healthy Native Communities Partnership, Inc.....\$18,100  
Participatory Evaluation Design for the Multi-Sector Leadership Program

#### ROBERT WILLIAMS

National Institutes of Health ..... \$373,725  
Stereotyping in Medical Student Decision-Making: Presence, Origins and Solutions

National Institutes of Health ..... \$151,332  
Implementing Personal Health Records to Promote Evidence-based Cancer Screening

#### Internal Medicine

#### ALLEN ADOLPHE

AbbVie ..... \$782,285  
Clinical Trial Agreement - Phase 3 Supplement

#### RANA AL-SADI

Crohn's & Colitis Foundation of America.....\$90,000  
MMP-9 Modulates Intestinal Epithelial Tight Junction Barrier and Intestinal Inflammation (Year 1 - FY 16)

#### CHRISTOS ARGYROPOULOS

Dialysis Clinic, Inc..... \$625,000  
Geosurveillance of the Chronic Kidney Disease Epidemic in the US

Dialysis Clinic, Inc.....\$90,000  
A Community-Based Study of the Epidemiology of Chronic Kidney Disease in Rural New Mexico

#### SANJEEV ARORA

Merck & Company, Inc. .... \$692,253  
Clinical Trial Agreement - Phase 3



AbbVie .....	\$482,154
<i>Clinical Trial Agreement - Phase 3</i>	
ZymoGenetics, Inc. ....	\$383,569
<i>Clinical Trial Agreement - Phase 2</i>	
Duke Clinical Research Institute. ....	\$88,764
<i>Clinical Trial Agreement - Phase 4</i>	
ICON Clinical Research .....	\$68,376
<i>Clinical Trial Agreement - Phase 4</i>	
AbbVie .....	\$2,250
<i>Clinical Trial Agreement - Phase 2 Supplement No. 2</i>	

#### **EDGAR BOEDEKER**

U.S. Department of Veterans Affairs .....	\$112,789
<i>Intergovernmental Personnel Act - Dawn Bueschel</i>	

#### **CRISTIAN GEORGE BOLOGA**

Givaudan Flavors Corporation .....	\$305,000
<i>Givaudan Research Agreement - Year 7</i>	

#### **MARK BURGE**

Sanofi US Services, Inc. ....	\$3,200
<i>Clinical Trial Agreement - Phase 3 Supplement</i>	
Sanofi US Services, Inc. ....	\$3,200
<i>Clinical Trial Agreement - Phase 3 Supplement</i>	

#### **MARCOS BURGOS**

New Mexico Department of Health .....	\$99,073
<i>Tuberculosis Medical Care, Consultation &amp; Education Services</i>	

#### **KATHLEEN COLLERAN**

Novartis Pharmaceuticals Corporation .....	\$88,972
<i>Clinical Trial Phase 3</i>	

#### **RICHARD CROWELL**

Lovelace Respiratory Research Institute .....	\$50,000
<i>Factors for Epigenetic Silencing of Lung Cancer Genes</i>	

#### **MICHELLE HARKINS**

Novartis Pharmaceuticals Corporation .....	\$4,964
<i>Clinical Trial Agreement - Phase 3 Supplement</i>	

#### **THERESA HEYNEKAMP**

Cystic Fibrosis Foundation .....	\$38,480
<i>CF Care Center Program</i>	
The University of Utah .....	\$13,500
<i>Multicenter Validation of Predictive Sputum Biomarkers in Cystic Fibrosis</i>	

#### **MICHELLE IANDIORIO**

University of Colorado Denver Anschutz Medical Campus .....	\$232,250
<i>New Mexico AIDS Education and Training Center</i>	

#### **PATRICIA KAPSNER**

GlaxoSmithKline .....	\$213,915
<i>Clinical Trial Agreement - Phase 4</i>	
Cmed Inc. ....	\$40,234
<i>Clinical Trial Agreement - Phase 3</i>	
Novartis Pharmaceuticals Corporation .....	\$12,660
<i>Clinical Trial Agreement - Phase 3 Supplement</i>	
Novartis Pharmaceuticals Corporation .....	\$7,504
<i>Clinical Trial Agreement - Phase 3 Supplement No. 2</i>	
Novo Nordisk, Inc. ....	\$3,089
<i>Clinical Trial Agreement - Phase 3 Supplement</i>	

#### **DENECE KESLER**

HHS/Health Resources and Services Administration .....	\$224,826
<i>Radiation Exposure Screening and Education Program in New Mexico</i>	
Lovelace Respiratory Research Institute .....	\$75,000
<i>Lovelace Respiratory Research Institute - Occupational Medicine Services</i>	
Lovelace Respiratory Research Institute .....	\$6,000
<i>Lovelace Respiratory Research Institute - Consulting Services</i>	
Johns Hopkins University .....	\$5,000
<i>Development of a Medical Screening Program for Former LANL &amp; SNL Workers</i>	
Honeywell Corporation .....	\$2,500
<i>Honeywell Aerospace of Albuquerque - Clinician Services</i>	

#### **IRENA KING**

Fred Hutchinson Cancer Research Center .....	\$32,007
<i>TREC Coordination Center</i>	

#### **WARREN LASKEY**

DVA/Veteran's Administration Medical Center .....	\$763,848
<i>VA Interventional Cardiology</i>	
New Mexico Department of Health .....	\$37,130
<i>Stroke and STEMI Center Development</i>	
New Mexico Department of Health .....	\$15,130
<i>Stroke and STEMI Center Development</i>	

#### **SAMUEL LEE**

Johns Hopkins University .....	\$6,000
<i>Cryptococcus Infection Network Cohort Study for Non-HIV Patients - Phase 3</i>	
Astellas USA Foundation .....	\$5,000
<i>12th Annual Meeting South Central Medical Mycology Group</i>	
Astellas USA Foundation .....	\$2,500
<i>13th Annual Meeting South Central Medical Mycology Group</i>	

#### **THOMAS MA**

National Institute of Diabetes and Digestive and Kidney Diseases ....	\$417,221
<i>Regulation of Intestinal Paracellular Permeability</i>	
U.S. Department of Veterans Affairs .....	\$97,736
<i>Intergovernmental Personnel Act - Manmeet Rawat</i>	

#### **LANA MELENDRES-GROVES**

Bayer HealthCare Pharmaceuticals Inc. ....	\$30,000
<i>Clinical Trial Agreement - Phase 4</i>	
Pharmaceutical Research Assoc. ....	\$7,975
<i>Clinical Trial Agreement - Phase 4</i>	



Martha Martinez-Grimes, PhD

## POPE MOSELEY

Albuquerque Area Indian Health Service .....	\$87,488
<i>IHS Specialty Services</i>	
University of Copenhagen .....	\$42,090
<i>Professional Services Agreement</i>	
Zenith Administrators .....	\$25,000
<i>Outpatient Professional Services</i>	
Zenith Administrators .....	\$25,000
<i>Outpatient Professional Services - BAA</i>	
QTC Medical Group .....	\$10,750
<i>Second Medical Opinion Evaluations</i>	

## ORRIN MYERS

National Institutes of Health .....	\$22,497
<i>Geographic and Multilevel Influences of Neighborhood and School Environments on the Development of Obesity Among Children in a Border Community</i>	

## PRASHANT NIGHOT

National Institute of Diabetes and Digestive and Kidney Diseases ....	\$147,916
<i>Role of the Chloride Channel CIC-2 in Intestinal Tight Junction Barrier Recovery</i>	

## TUDOR OPREA

NIH/National Cancer Institute .....	\$1,801,454
<i>Illuminating the Druggable Genome - The Knowledge Management Center</i>	
University of Gothenburg .....	\$25,000
<i>Visiting Scientist Agreement</i>	
National Institutes of Health .....	\$11,665
<i>Structural and Functional Analysis of Glucose Transporters</i>	

## KIMBERLY PAGE

NIH/National Institute on Drug Abuse .....	\$1,332,959
<i>Acute Hepatitis C Infection in Young Injectors</i>	
NIH/National Institute on Drug Abuse .....	\$884,605
<i>Sexually Transmitted Infections Clinical Trials Group</i>	
National Institutes of Health .....	\$457,155
<i>InC3: International Collaborative of Prospective Studies of HIV and Hepatitis in IDU</i>	
National Institutes of Health .....	\$386,153
<i>InC3: International Collaborative of Prospective Studies of HIV and Hepatitis in IDU</i>	
Centers for Disease Control and Prevention .....	\$299,973
<i>Epidemiology, Prevention and Treatment of HCV in Young Adult Persons who Inject Drugs in Non-Urban New Mexico (Hepatitis-TIPS)</i>	
National Institutes of Health .....	\$119,766
<i>Acute Hepatitis C Infection in Young Injectors (Restricted Supplement for AIDS)</i>	
National Institutes of Health .....	\$104,000
<i>Sexually Transmitted Infections Clinical Trials Group</i>	

National Institutes of Health .....	\$94,227
<i>Acute Hepatitis C Infection in Young Injectors</i>	
National Institutes of Health .....	\$39,492
<i>CIPI: Cambodia Integrated HIV and Drug Prevention Implementation Program</i>	
National Institutes of Health .....	\$29,321
<i>CIPI: Cambodia Integrated HIV and Drug Prevention Implementation Program</i>	
National Institutes of Health .....	\$990
<i>InC3: International Collaborative of Prospective Studies of HIV and Hepatitis in IDU (Supplement)</i>	

## DOUGLAS PERKINS

National Institutes of Health .....	\$242,882
<i>Training and Research on Severe Malarial Anemia</i>	
Los Alamos National Laboratory .....	\$218,756
<i>Characterize the Emergence of Antibiotic Resistance and Virulence in the Immunocompromised Population</i>	

## ARTI PRASAD

The Bell Group, Inc. ....	\$25,000
<i>Professional Services: UNMMG Center for Life</i>	

## DAVID SCHADE

National Institutes of Health .....	\$475,577
<i>Glycemia Reduction Approaches in Diabetes: A Comparative Effectiveness Study</i>	
NIH/National Institute of Diabetes and Digestive and Kidney Diseases .....	\$232,897
<i>Diabetes Prevention Program Outcomes Study - Phase 3</i>	
National Institutes of Health .....	\$158,526
<i>Glycemia Reduction Approaches in Diabetes: A Comparative Effectiveness Study</i>	
National Institutes of Health .....	\$123,450
<i>Epidemiology of Diabetes Intervention and Complications</i>	
National Institutes of Health .....	\$35,485
<i>Hearing Impairment in Long-Term Type 1 Diabetes</i>	
National Institutes of Health .....	\$15,384
<i>Residual Beta Cell Function in Patients with Long-Term Type 1 Diabetes</i>	
National Institutes of Health .....	\$2,000
<i>Type 1 Diabetes TrialNet</i>	

## MARK SHELDON

GlaxoSmithKline LLC .....	\$98,865
<i>Clinical Trial Agreement - Phase 3</i>	

## AKSHAY SOOD

Agency for Healthcare Research and Quality .....	\$395,123
<i>Novel Role for Adiponectin-Modulating Drugs for Asthma in the Obese</i>	
Miners Colfax Medical Center .....	\$146,393
<i>Miner's Colfax Medical Center-Medical Consultation &amp; Care</i>	
American Thoracic Society .....	\$18,795
<i>Household Air Pollution from Solid Fuel Combustion Smoke and Global Health Equality - A Workshop</i>	

## ELAINE THOMAS

New Mexico Department of Health .....	\$67,757
<i>STD Provider Training Project: FY 15</i>	

## MARK UNRUH

Anonymous Non-Profit Foundation .....	\$1,181,620
<i>Medical Directorship and QA</i>	
Baystate Medical Center .....	\$214,607
<i>ACA-Shared Decision Making and Renal Supportive Care</i>	
Dialysis Clinic, Inc. ....	\$184,574
<i>DCI Biostatistician</i>	



Diane Lidke, PhD, Bridget Wilson, PhD, and Marta Cooperstein, PhD

Dialysis Clinic, Inc. ....	\$178,945
<i>Quality of Life Indicators Among Patients with Chronic Kidney Disease</i>	
Dialysis Clinic, Inc. ....	\$168,814
<i>Acute Kidney Injury Outcomes</i>	
Dialysis Clinic, Inc. ....	\$139,410
<i>Provider Knowledge, Attitude and Practices Surrounding Conservative Management for Chronic Kidney Disease: A Survey Study</i>	
Dialysis Clinic, Inc. ....	\$133,926
<i>Clinical Trial Agreement - Phase 2</i>	
Dialysis Clinic, Inc. ....	\$127,224
<i>Predicting CKD in an Underserved Population</i>	
University of Washington.....	\$96,739
<i>ACA-Treatment Options for Depression in Patients Undergoing Hemodialysis</i>	
Anonymous Non-Profit Foundation.....	\$54,240
<i>Medical Directorship and QA - Travel</i>	
Anonymous Non-Profit Foundation.....	\$54,240
<i>Medical Directorship and QA - Travel</i>	
Dialysis Clinic, Inc. ....	\$5,155
<i>Equipment for Kidneys Research</i>	

#### HEATHER WARD

National Institutes of Health .....	\$113,015
<i>Targeting Fibrosis in Polycystic Kidney Disease</i>	
Dialysis Clinic, Inc. ....	\$60,000
<i>Repurposing Relaxin to Inhibit Cystogenesis and Progression of Polycystic Kidney Disease</i>	

#### BRUCE WILLIAMS

HHS/Health Resources and Services Administration .....	\$694,866
<i>Comprehensive HIV Early Intervention Services/ Ryan White Part C Outpatient EIS Program</i>	
HHS/Health Resources and Services Administration .....	\$472,628
<i>Coordinated Services and Access to Research for Women, Infants, Children &amp; Youth</i>	
New Mexico Department of Health .....	\$316,500
<i>HIV Services Provider Program - BAA</i>	
HHS/Health Resources and Services Administration .....	\$38,000
<i>Comprehensive HIV Early Intervention Services/ Ryan White Part C Outpatient EIS Program</i>	

#### Molecular Genetics and Microbiology

##### ELLEN BESWICK

NIH/National Institute of Diabetes and Digestive and Kidney Diseases. . .	\$27,000
<i>Alteration in CD90+ Stromal Cells in TH1/TH17 Regulation in Crohn's Disease</i>	

##### KIRAN BHASKAR

NIH/National Institute of Neurological Disorders and Stroke .....	\$330,313
<i>The Role of Inflammasome Signaling in Tauopathies</i>	

##### JUDY CANNON

NIH/National Institute of Allergy and Infectious Diseases .....	\$377,500
<i>The Role of PKCtheta in T-Cell and T-ALL Migration</i>	

##### VOJO DERETIC

NIH/National Institute of Allergy and Infectious Diseases .....	\$656,042
<i>Autophagy Against Tuberculosis and HIV</i>	
NIH/National Institute of Allergy and Infectious Diseases .....	\$399,999
<i>Pattern Recognition Receptors and Autophagy in Mtb Control in AIDS</i>	



Samantha Schwartz

National Institutes of Health .....	\$25,937
<i>TLR4 Evasion, Bacterial Persistence and Chronic Inflammation</i>	

NIH/National Institute of Allergy and Infectious Diseases .....	\$25,937
<i>Pattern Recognition Receptors and Autophagy in Mtb Control in AIDS</i>	

#### MARY ANN OSLEY

NIH/National Institute of General Medical Sciences.....	\$347,363
<i>Genetic Analysis of H2B Ubiquitylation in Yeast</i>	

NIH/National Institute of General Medical Sciences.....	\$343,039
<i>Genetic Analysis of H2B Ubiquitylation in Yeast</i>	

#### MICHELLE OZBUN

NIH/National Institute of Dental and Craniofacial Research .....	\$226,500
<i>Targeted Therapy for EGFR Pathway in HPV + HNSCCs</i>	

University of Pittsburgh .....	\$90,909
<i>Genetic Alterations of PIK3CA Identify Actionable Targets for HPV-Associated Head and Neck Cancer</i>	

NIH/National Cancer Institute.....	\$33,885
<i>Regulation of Human Papillomavirus Replication via Cell-Signaling Pathways</i>	

National Institutes of Health .....	\$444
<i>Regulation of Human Papillomavirus Replication Via Cell-Signaling Pathways</i>	

#### DAVID PEABODY

AgilVax, Inc. ....	\$62,500
<i>Affinity Selection on Antiviral mAb Targets</i>	

#### XUEXIAN YANG

NIH/National Institute of Allergy and Infectious Diseases .....	\$364,750
<i>Regulation of T Helper Cell Effector Function</i>	

#### Neurology

##### CHRISTOPHER STEWART CALDER

GBS/CIDP Foundation International.....	\$8,000
<i>Clinical Trial Agreement - Phase 3</i>	

##### BRUCE FISCH

SAGE Therapeutics .....	\$28,750
<i>Clinical Trial Agreement - Phase 3</i>	

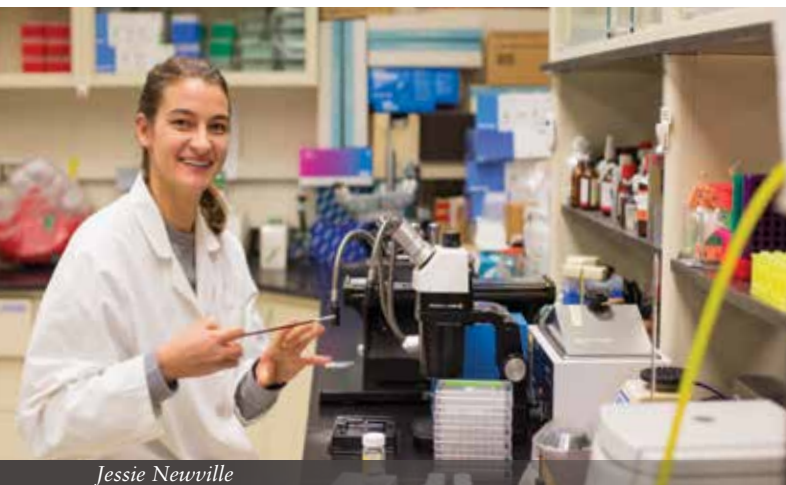
##### COREY FORD

Novartis .....	\$96,593
<i>Clinical Trial Agreement - Phase 3</i>	

Teva Pharmaceutical Industries.....	\$35,560
<i>Clinical Trial Agreement - Phase 4</i>	

University of California, San Francisco .....	\$10,487
<i>Treatment of Multiple Sclerosis with Siponimod Clinical Trial Phase 3 - Subaward</i>	





Jessie Newville

### MOLLY KING

National Institutes of Health .....\$2,058  
*Insulin Resistance Intervention after Stroke Trial*

### JIM LIU

NIH/National Institute of General Medical Sciences .....\$1,048,334  
*Integrative Program in CNS Pathophysiology Research (COBRE)*

### LESLIE MORRISON

University of California, San Francisco ..... \$182,577  
*Clinical Trial Agreement - Phase 3 - The Brain Vascular Malformation Consortium: Predictors of Clinical Course*

### SUROJIT PAUL

NIH/National Institute of Neurological Disorders and Stroke ..... \$330,313  
*Role of Brain-Specific Tyrosine Phosphatase STEP in Neuroprotection and Death*

NIH/National Institute of Neurological Disorders and Stroke .....\$75,500  
*Role of Brain Specific Tyrosine Phosphatase STEP in Neuroprotection and Death - Administrative Supplement*

### JOHN PHILLIPS

The Mind Research Network ..... \$100,745  
*MRN Medical Director*

The Mind Research Network .....\$1,286  
*MRN Medical Director*

### RANJANA PODDAR

NIH/National Institute of Neurological Disorders and Stroke ..... \$330,313  
*Molecular Basis of Hyperhomocysteinemia-Induced Brain Injury in Ischemic Stroke*

### STEFAN POSSE

Rigshospitalet .....\$19,636  
*Visiting Research Scientist Summer 2014*

University of Copenhagen .....\$17,371  
*Visiting Research Scientist February 2015 - April 2015*

National Institutes of Health .....\$3,127  
*Magnetic Resonance Spectroscopy of Breast Cancer Using Model-Based Localization*

### GARY ROSENBERG

NIH/National Institute of Neurological Disorders and Stroke ..... \$546,112  
*Bio-Markers for White Matter Injury in Mixed and Vascular Cognitive Impairment*

NIH/National Institute of Neurological Disorders and Stroke ..... \$327,009  
*White Matter Hypoxia in Novel Model of MMP - Mediated Inflammation SHR/SP*

The Mind Research Network ..... \$142,399  
*MRN Administrative Operations*

U.S.-Israel Binational Science Foundation .....\$21,137  
*Blood-Brain Barrier Permeability Abnormalities and Post-Stroke Cognitive Decline*

Eastern New Mexico Medical Center .....\$10,000  
*Professional Services*

### LAUREL SILLERUD

AMAG Pharmaceuticals, Inc. ....\$23,100  
*Ferumoxylol Contrast for the MRI Imaging for Diabetic Osteomyelitis: An Innovative Study Exploring Iron Contrast Agents for Imaging Osteomyelitis in Diabetic Patients*

### JENNIFER ANN VICKERS

New Mexico Department of Health ..... \$131,875  
*Children's Medical Services (FY 15)*

### YI YANG

NIH/National Institute of Neurological Disorders and Stroke ..... \$226,500  
*Longitudinal Monitoring of Microglia Activation After Stroke with SPION-Enhanced MRI*

### SARAH YOUSSEF

Catalyst Pharmaceutical Partners, Inc. ....\$6,401  
*Clinical Trial Agreement - Phase 4*

## Neurosciences

### ANDREA ALLAN

NIH/National Institute of Environmental Health Sciences ..... \$301,942  
*Epigenetic Changes in the Glucocorticoid Receptor Gene Due to Arsenic Exposure*

NIH/National Institute of Environmental Health Sciences .....\$33,550  
*Epigenetic Changes in the Glucocorticoid Receptor Gene Due to Arsenic Exposure*

### ERIN MILLIGAN

NIH/National Institute on Alcohol Abuse and Alcoholism ..... \$217,063  
*Chronic Neuropathic Pain, Glial-Immune Responses and Fetal Alcohol Exposure (MPI)*

### NORA PERRONE-BIZZAZERO

NIH/National Institute on Drug Abuse ..... \$404,353  
*Competing Roles of microRNAs and RNA-Binding Proteins in Drug Addiction*

NIH/National Institute on Drug Abuse .....\$42,477  
*Competing Roles of MicroRNAs and RNA-Binding Proteins in Drug Addiction - Diversity Supplement - Robert Oliver*

The Mind Research Network .....\$41,783  
*Mining the Genomewide Scan: Genetic Profiles of Structural Loss in Schizophrenia*

### DANIEL SAVAGE

NIH/National Institute on Alcohol Abuse and Alcoholism .....\$1,618,836  
*Fetal Ethanol-Induced Behavioral Deficits: Mechanisms, Diagnoses and Interventions*

NIH/National Institute on Alcohol Abuse and Alcoholism .....\$1,528,781  
*Fetal Ethanol-Induced Behavioral Deficits: Mechanisms, Diagnoses and Interventions*

NIH/National Institute on Alcohol Abuse and Alcoholism ..... \$307,647  
*Fetal Ethanol Effects on Histaminergic Regulation of Neurotransmission*

### CARLOS VALENZUELA

NIH/National Institute on Alcohol Abuse and Alcoholism ..... \$325,529  
*Alcohol and Cerebellar Circuits*

NIH/National Institute on Alcohol Abuse and Alcoholism ..... \$144,369  
*Alcohol Research Training in Neuroscience*

## Neurosurgery

### J FRED HARRINGTON

K2M, Inc. .... \$152,128  
*Clinical Trial Agreement - Phase 4*

### REX JUNG

Johnson O'Connor Research Foundation ..... \$300,000  
*The Neuroscience of Aptitude*

### EDWIN NEMOTO

Rio Grande Neurosciences, Inc. .... \$79,408  
*Animal Studies on Repetitive Mild TBI (KB Invitor Sept 2014)*

Rio Grande Neurosciences, Inc. .... \$13,750  
*Animal Studies on Repetitive Mild TBI (KB Invitor Sept 2014)*

Rio Grande Neurosciences, Inc. .... \$13,006  
*Effect of POEMS on cGMP Response During OGD*

Rio Grande Neurosciences, Inc. .... \$9,388  
*PEMF and Microperfusion in TBI, Stroke and Neuroinflammatory Animal Models - Supplement*

Rio Grande Neurosciences, Inc. .... \$8,250  
*PEMF and Microperfusion in TBI, Stroke and Neuroinflammatory Animal Models - Supplement*

### TAMARA ROITBAK

NIH/National Institute of Neurological Disorders and Stroke ..... \$327,009  
*In Vivo Inhibition of Specific microRNAs to Support Post-Stroke Revascularization*

### CHRISTOPHER TAYLOR

Johns Hopkins University ..... \$119,171  
*MISTIE III - A Phase 3 Randomized, Open-Label, 500-Subject Clinical Trial of Minimally Invasive Surgery Plus rt-PA in the Treatment of Intracerebral Hemorrhage*

### HUY TRAN

University of Cincinnati ..... \$87,603  
*Ethnic and Racial Variations with Intracerebral Hemorrhage - Per Patient - Phase 4*

University of Cincinnati ..... \$42,576  
*Ethnic and Racial Variations with Intracerebral Hemorrhage - Administrative - Phase 4*

University of Minnesota ..... \$23,746  
*Antihypertensive Treatment of Cerebral Hemorrhage*

### HOWARD YONAS

Center for Medicare and Medicaid Services ..... \$5,198,471  
*ACA-Access to Critical Cerebral Emergency Support Services HCIA2*

New Mexico VA Health Care System ..... \$177,156  
*Neurosurgery Services*

New Mexico Department of Veterans' Services ..... \$88,578  
*VA Neurosurgery Services Interim Agreement*

New Mexico Department of Veterans' Services ..... \$88,578  
*VA Neurosurgery Services Interim Agreement*

Guadalupe County Hospital ..... \$45,000  
*Master Services Agreement - ACCESS*

Nor-Lea General Hospital ..... \$25,000  
*Master Hospital Services Agreement*

Roswell Hospital Corp. .... \$25,000  
*Clinical Services - ACCESS*

New Mexico Department of Health ..... \$16,860  
*UNM Pain Center Naloxone Co-Prescription Pilot Project*

New Mexico Governor's Commission on Disability ..... \$15,000  
*Approach for Management of TBI*

## New Mexico Tumor Registry

### CHARLES WIGGINS

NIH/National Cancer Institute ..... \$2,860,998  
*Surveillance, Epidemiology and End Results Program (Task Order 5)*

NIH/National Cancer Institute ..... \$28,121  
*TOREP- SEER RRSS #14-3 Patterns of Care*

Memorial Medical Center ..... \$20,000  
*Memorial Medical Center Abstracting Services*

Christus St. Vincent Regional Medical Center ..... \$15,000  
*Abstracting at Christus St. Vincent RMC*

Christus St. Vincent Regional Medical Center ..... \$15,000  
*Abstracting at Christus St. Vincent RMC - BAA*

New Mexico Department of Health ..... \$6,330  
*Breast and Cervical Cancer Surveillance Project*

U.S. Department of Justice ..... \$2,000  
*Radiation Exposure Compensation Program*

## Obstetrics and Gynecology

### KATE AUSTIN

New Mexico Department of Health ..... \$140,000  
*Prenatal Medical Services Project*

New Mexico Department of Health ..... \$54,960  
*High-Risk Prenatal Care Project*

### GENA DUNIVAN

Pelvalon ..... \$2,000  
*Clinical Trial Agreement - Phase 4*

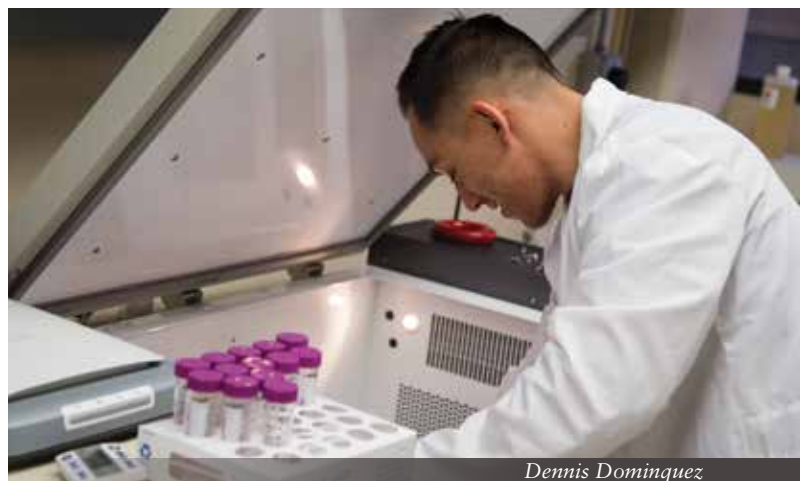
### EVE ESPEY

Anonymous Non-Profit Foundation ..... \$359,886  
*Fellowship in Family Planning*

First Choice Community Healthcare ..... \$82,530  
*Midwifery Services*

New Mexico Department of Health ..... \$82,460  
*High-Risk Prenatal Care*

The University of Utah ..... \$25,164  
*BLIS: Breastfeeding Levonorgestrel Study*



Dennis Dominquez

### YUKO KOMESU

NIH/National Center for Complementary and Alternative Medicine... \$342,864  
*Brain-Centered Therapy Versus Medication for Urgency Urinary Incontinence: An RCT (MPI)*

Research Triangle Institute... \$231,803  
*Human Microbiome Study-ESTEEM*

### WILLIAM RAYBURN

Albuquerque Area Indian Health Service... \$87,488  
*IHS Specialty Services*

### REBECCA ROGERS

NIH/National Institute of Child Health and Human Development... \$306,219  
*RCT of Hypnotherapy vs. Tolterodine for OAB: Voiding and Brain Activation Changes*

### RAMEET HARPAL SINGH

Society of Family Planning... \$87,992  
*Perceptions of Non-Surgical Permanent Contraception in India*

New Mexico Department of Health... \$67,520  
*Tubal Ligation Sterilization Surgical Procedures*

UNM-Sponsored - Bayer Healthcare Pharmaceuticals, Inc. ... \$50,291  
*PI Initiated - Clinical Trial Agreement - Phase 4*

New Mexico Department of Health... \$1,108  
*Vasectomy Sterilization Surgical Procedures Project (FY 15 Supplement)*

### NANCY SOKKARY

Society of Family Planning... \$30,000  
*Providing Adolescent Contraception in the Emergency Room*

### Office of the Medical Investigator

### HANNAH KASTENBAUM

New Mexico Department of Health... \$4,220  
*New Mexico Violent Death Reporting System (FY 16)*

New Mexico Department of Health... \$1,055  
*New Mexico Violent Death Reporting System (FY 15)*

### SARAH LATHROP

New Mexico Public Safety Department... \$13,250  
*2014 Paul Coverdell Basic*

### KURT NOLTE

National Association of Medical Examiners... \$198,890  
*Compensation for Executive Vice President*

National Association of Medical Examiners... \$18,301  
*Executive Vice President Services*

### LORI PROE

Intersociety Council for Pathology Information... \$1,000  
*Medical Student Interest Group*

### ROSS ZUMWALT

DVA/Veteran's Administration Medical Center... \$78,109  
*Autopsy Services for POWs*

New Mexico Crime Victims Reparation Commission... \$53,655  
*Grief Intervention for Homicide Survivors*

DVA/Veteran's Administration Medical Center... \$45,691  
*Autopsy Services for POWs*

New Mexico Department of Health... \$25,000  
*Public Health Preparedness and Response to Bioterrorism - BT Grant*

New Mexico Department of Health... \$21,100  
*New Mexico Sudden Unexpected Infant Death Registry*

### Orthopaedics

### THOMAS DECOSTER

Center for Orthopaedic Trauma... \$5,000  
*Center for Orthopaedic Trauma Advancement - Educational Grant*

DePuy Orthopaedics, Inc. ... \$2,000  
*AONA Course - Toronto*

### GEHRON TREME

DePuy Orthopaedics, Inc. ... \$10,000  
*AONA Course - New Orleans*

Synthes, Inc. ... \$10,000  
*AONA Course - Phoenix*

DePuy Orthopaedics, Inc. ... \$9,180  
*AONA Course - Toronto*

DePuy Orthopaedics, Inc. ... \$4,000  
*AONA Course - New Orleans*

DePuy Orthopaedics, Inc. ... \$2,295  
*AONA Course - Atlanta*

Synthes, Inc. ... \$2,000  
*AONA Course - Charlotte*

### DANIEL WASCHER

Arthrex, Inc. ... \$20,000  
*Arthrex Sports Fellowship Grant/Educational Grant*

U.S. Department of Justice... \$9,730  
*Expert Witness (Medeles v. U.S.A.)*

### Pathology

### ELAINE BEARER

NIH/National Institute of Mental Health... \$562,571  
*Live Imaging of Brain Circuitry in Mouse Models of PTSD*

### THERESE BOCKLAGE

TriCore Reference Laboratories... \$105,800  
*Professional Service Agreement - Diagnostics WSI*

### DOUGLAS CLARK

TriCore Reference Laboratories... \$2,788,864  
*Medical Direction*

TriCore Reference Laboratories... \$546,152  
*Medical Direction*

TriCore Reference Laboratories... \$364,101  
*Medical Direction*

United Blood Services... \$223,695  
*Professional Services*



Dawn Delfin, PhD



UNM Medical Group.....	\$154,479
<i>Memorandum of Agreement FY 15</i>	
UNM Medical Group.....	\$152,230
<i>Memorandum of Agreement FY 14</i>	
UNM Medical Group.....	\$149,980
<i>Memorandum of Agreement FY 13</i>	

### VITTORIO CRISTINI

Methodist Hospital Research Institute.....	\$96,546
<i>Center for Systematic Modeling of Cancer Development</i>	
Methodist Hospital Research Institute.....	\$34,301
<i>Center for Oncophysics: PSOC Expansion Project 1</i>	
NIH/National Cancer Institute.....	\$15,343
<i>Texas Center for Cancer Nanomedicine</i>	
Methodist Hospital Research Institute.....	\$11,876
<i>Center for Oncophysics: PSOC Expansion Project 6</i>	

### KENDALL CROOKSTON

Blood Systems Foundation.....	\$80,299
<i>Transfusion Medicine Fellowship</i>	

### TRACY IRENE GEORGE

TriCore Reference Laboratories.....	\$105,500
<i>Professional Services Agreement Between UNM Regents and TriCore Reference Laboratories/Celgene</i>	
TriCore Reference Laboratories.....	\$10,252
<i>PSA Seattle Genetics</i>	

### JENNIFER GILLETTE

National Institutes of Health.....	\$377,500
<i>Functional Role of Tetraspanin CD82 in Hematopoietic Stem Cell Interaction</i>	
National Institutes of Health.....	\$30,479
<i>Spatiotemporal Analysis of CD82-Mediated Integrin Adhesion</i>	
National Institutes of Health.....	\$4,000
<i>Eighth International Meeting on Tetraspanins and Membrane Scaffolds</i>	
The Company of Biologists, Ltd.....	\$3,137
<i>Eighth International Conference on Tetraspanins and Membrane Scaffolds</i>	
National Institutes of Health.....	\$444
<i>Spatiotemporal Analysis of CD82-Mediated Integrin Adhesion (Supplement)</i>	

### PATTI GRAVITT

National Institutes of Health.....	\$83,254
<i>Vaginal Microbiota, Immune Responses and Vulvovaginal Symptoms During Menopause</i>	

### GLYNNIS INGALL

Crownpoint Healthcare Facility.....	\$26,080
<i>Laboratory Directorship</i>	
Crownpoint Healthcare Facility.....	\$26,080
<i>Laboratory Directorship FY 15 Mod 1</i>	
Crownpoint Healthcare Facility.....	\$26,080
<i>Laboratory Directorship FY 15 Mod 2</i>	

### SARAH LATHROP

Association of Public Health Laboratories.....	\$13,715
<i>Assessing Current Diagnostic Practices Among Clinical Labs in FoodNet Catchment Area</i>	

### DIANE LIDKE

NIH/National Institute of General Medical Sciences.....	\$285,264
<i>Single Molecule Imaging to Quantify FCRI Signaling Dynamics</i>	



Eunice Choi

Human Frontier Science Program.....	\$110,000
<i>Nano-Mechano-Biology: Spatiotemporal Remodeling of Membrane Nanoplatfoms Under Mechanical Forces</i>	

National Institutes of Health.....	\$25,000
<i>Mechanisms of Apoptotic Calcium Signaling</i>	

### AARON NEUMANN

National Institutes of Health.....	\$420,379
<i>Nano and Microscale Molecular Machines for Innate Immune Sensing of Candida</i>	
American Association of Immunologists.....	\$22,476
<i>Microscale Innate Immune Mechanisms for Recognition of Candida Species Fungal Pathogene</i>	

### LARRY SKLAR

NIH/National Cancer Institute.....	\$296,948
<i>Illuminating the Druggable Genome Knowledge Management Center</i>	
National Institutes of Health.....	\$82,875
<i>Detection and Usage of Novel Compounds to Stimulate NLRP3 Inflammasome Activity</i>	

### ANGELA WANDINGER-NESS

NIH/National Institute of General Medical Sciences.....	\$774,636
<i>Academic Science Education and Research Training</i>	
NIH/National Institute of Dental and Craniofacial Research.....	\$444
<i>OFD1 as Constituent of a Multimeric Protein Complex in Odontoblast Primary Cilia - Supplement</i>	

### COSETTE WHEELER

NIH/National Cancer Institute.....	\$1,374,545
<i>New Mexico HPV Outcomes, Practice Effectiveness and Surveillance</i>	
NIH/National Cancer Institute.....	\$1,003,227
<i>New Mexico HPV Outcomes, Practice Effectiveness and Surveillance</i>	
GlaxoSmithKline.....	\$850,000
<i>Clinical Trial - Phase 3</i>	

### BRIDGET WILSON

NIH/National Institute of General Medical Sciences.....	\$2,491,967
<i>Center for Spatiotemporal Modeling of Cell Signaling</i>	
Los Alamos National Laboratory.....	\$113,500
<i>Three-Dimensional Molecular Tracking of IgE-Fc3RI in Live Cells</i>	
National Institutes of Health.....	\$29,887
<i>Validation of the Pre-BCR Signaling Complex in Pre-B ALL Cell Model by Two-Color Single-Particle Tracking and Peptidomimetic Inhibition</i>	



Nora Perrone-Bizzozero, PhD and Amy Gardiner, PhD

### BRIDGET WILSON (CONTINUED)

MedImmune, Inc. ....\$12,500  
Sponsored Research Agreement: UNM HSC and MedImmune

### STEPHEN YOUNG

nano MR, Inc. ....\$115,000  
Specimen Acquisition Study to Evaluate the NanoMR Pathogen Detection System  
  
Life Technologies Corporation .....\$30,000  
Preparation of Microbial Stock

### ROSS ZUMWALT

Lovelace Health System .....\$25,000  
Autopsy Services

### Pediatrics

#### SHIRLEY ABRAHAM

Oregon Health & Science University .....\$34,250  
Regional Hemophilia Network-Mountain States  
  
University of Colorado - Denver .....\$32,021  
Public Health Surveillance for the Prevention of Bleeding and Clotting  
  
American Thrombosis and Hemostasis Network .....\$11,250  
ATHN Data Quality Counts - BAA

#### TANYA BAKER-MCCUE

New Mexico Library Foundation .....\$1,000  
New Mexico Library Foundation Grant

#### KOH BOAYUE

Children's Hospital of Philadelphia .....\$76,150  
Clinical Trial Agreement - Non-Industry  
  
St. Baldrick's Foundation .....\$69,000  
St. Baldrick's Infrastructure Development Grant  
  
Children's Hospital of Philadelphia .....\$37,000  
COG Clinical Trial Agreement Subaward - Phases 2 and 3  
  
Children's Hospital of Philadelphia .....\$10,000  
Clinical Trial Agreement- Phase 2  
  
Children's Hospital of Philadelphia .....\$4,800  
Health Effects After Anthracycline and Radiation Therapy: Dexrazzone and Prevention of Anthracycline

#### FRANCINE CAFFEY

New Mexico Department of Health .....\$4,774  
Summer Asthma Institute Project

### CAROL CLERICUZIO

University of California, San Diego .....\$5,000  
Prospective Follow-Up of Pregnancy Exposure to Humira

### LORETTA CORDOVA DE ORTEGA

New Mexico Department of Health .....\$317,555  
Children's Medical Services Outreach Clinics Project  
  
New Mexico Department of Health .....\$132,930  
Children's Medical Services Outreach Clinics Project - FY 16 - Supplement - Pediatric Cardiology Clinic  
  
New Mexico Department of Health .....\$66,465  
Children's Medical Services Outreach Clinics Project - FY 15 - Supplement - Pediatric Cardiology Clinic  
  
TriCore Reference Laboratories .....\$26,164  
Genetic Counseling Services  
  
San Juan Regional Medical Center .....\$25,000  
Professional Services Agreement  
  
Molina Healthcare of New Mexico .....\$20,000  
In-Home Assessments  
  
Taos Clinic for Children and Youth .....\$10,000  
Professional Services via Telemedicine - BAA  
  
PHC-Las Cruces, Inc. ....\$6,394  
Professional Services/Consultations - BAA  
  
Northern Navajo Medical Center .....\$4,800  
On-Site Pediatric Genetic Clinic  
  
Mountain View Regional Medical Center .....\$2,500  
Professional Services  
  
Lordsburg Municipal Schools .....\$2,397  
Professional Services  
  
Ben Archer Health Center, Inc. ....\$550  
Professional Service Agreement  
  
**LEA DAVIES**  
HHS/Health Resources and Services Administration .....\$333,642  
New Mexico Pediatric Pulmonary Center  
  
Cystic Fibrosis Foundation .....\$44,295  
Cystic Fibrosis Center of New Mexico-Cystic Fibrosis Registry - BAA  
  
HHS/Health Resources and Services Administration .....\$25,000  
New Mexico Pediatric Pulmonary Center - Administrative Supplement  
  
**WALTER DEHORITY**  
Duke University .....\$38,460  
Clinical Study - Phase 1  
  
Duke University .....\$11,951  
Clinical Study - Phase 1 - Start-Up  
  
**TARA DUPONT**  
New Mexico Department of Health .....\$118,000  
Developmental Care Continuity Program - Fee-For-Service  
  
New Mexico Department of Health .....\$70,640  
Developmental Care Continuity Program - (Cost Reimbursement)  
  
American Academy of Pediatrics .....\$12,000  
Neonatal Passport  
  
**RANDY HEIDENREICH**  
New Mexico Department of Health .....\$116,472  
CMS Newborn Screening (FY 16) - BAA

**SANDRA HEIMERL**

HHS/Health Resources and Services Administration ..... \$670,480  
*New Mexico Leadership Education in Neurodevelopmental Disabilities*

**CARMEN HERRERA**

The Weil Foundation ..... \$15,000  
*UNM Pediatric Integrative Medicine in Residency Program*

**LAUREN JANTZIE**

Boston Children's Hospital ..... \$60,219  
*Mechanisms of Neonatal Erythropoietin Neuroprotection*

**ALBERTA KONG**

Fluor Federal Solutions, LLC ..... \$77,376  
*Medical Services at Albuquerque Job Corps - BAA*

**JANE MCGRATH**

New Mexico Human Services Department ..... \$1,100,000  
*Envision New Mexico: The Initiative for Child Healthcare Quality*

New Mexico Human Services Department ..... \$259,817  
*School-Based Health Center Behavioral Health Quality Improvement (FY 15)*

New Mexico Department of Health ..... \$193,600  
*Race to the Top Early Learning Challenge*

W.K. Kellogg Foundation ..... \$125,000  
*Systems of Support for Breastfeeding in Selected NM Communities*

New Mexico Department of Health ..... \$122,857  
*School-Based Health Center Health Provision in the Schools (FY 15 Supplement)*

New Mexico Department of Health ..... \$60,000  
*Envision New Mexico - Newborn Hearing Screening Program Quality Improvement Project*

New Mexico Department of Health ..... \$58,000  
*Albuquerque School-Based Health*

New Mexico Department of Health ..... \$54,596  
*Analysis of Childhood Obesity Project (FY 15)*

New Mexico Public Education Department ..... \$50,000  
*GRADS FY 15*

New Mexico Department of Health ..... \$43,999  
*Envision Quality Improvement Project*

New Mexico Department of Health ..... \$40,000  
*Envision New Mexico - Newborn Hearing Screening Program Quality Improvement Project*

Molina Healthcare of New Mexico ..... \$20,000  
*Molina's Envision Quality Improvement Project*

State of Colorado Department of Health Care Policy and Financing .. \$16,000  
*School-Based Health Center Data Analysis*

New Mexico Department of Health ..... \$15,825  
*Cuidate Curriculum Project FY 15*

New Mexico Department of Health ..... \$11,994  
*Envision SBHC*

New Mexico Department of Health ..... \$10,800  
*Albuquerque School-Based Health*

Apex Education ..... \$9,500  
*STD Screening and Assessment Tools for an Adolescent Population (Yr 1)*

**SUSAN MILLER**

Bernalillo County ..... \$4,999  
*UNM NM-CAPP Child Abuse Prevention*

**MARCIA MORIARTA**

New Mexico Children, Youth and Families Department ..... \$215,471  
*Early Childhood Infrastructure Development (FY 15)*

New Mexico Children, Youth and Families Department ..... \$93,000  
*Infant-Parent Psychotherapy (FY 15) - BAA*

Utah State University ..... \$45,492  
*Indian Children's Program - Withdrawn*

New Mexico Children, Youth and Families Department ..... \$20,000  
*Infant-Parent Psychotherapy (FY 15 Supplement) - BAA*

New Mexico Children, Youth and Families Department ..... \$5,000  
*Infant Mental Health Community of Practice*

New Mexico Children, Youth and Families Department ..... \$5,000  
*Infant Mental Health Community of Practice*

**ROBIN OHLS**

National Institutes of Health ..... \$64,930  
*Preterm Epo Neuroprotection Trial*

CureDM Group Holdings, LLC ..... \$3,000  
*Developmental of Human Fetal Pancreatic Cell Assays*

**RENEE RITA ORNELAS**

New Mexico Department of Health ..... \$391,800  
*Para Los Niños Program*

New Mexico Crime Victims Reparation Commission ..... \$23,450  
*Adolescent Continuity Clinic for Education on Self Safety*

**LINDA PARHAM**

University of Southern California ..... \$17,556  
*Development of Teaching Materials in Support of Sensory Integration and Praxis Test*

University of Southern California ..... \$11,705  
*Development of Teaching Materials in Support of Sensory Integration and Praxis Test*

**JANET POOLE**

Patient-Centered Outcomes Research Institute ..... \$1,771,785  
*ACA-Taking Charge of Systemic Sclerosis: Improving Patient Outcomes Through Self-Assessment*

**HENGAMEH RAISSY**

National Jewish Health ..... \$118,040  
*STICS - AsthmaNet - Clinical Trial Agreement - Phase 4*

Vertex Pharmaceuticals Incorporated ..... \$26,908  
*Clinical Trial Agreement - Phase 3*



Frank Martinez and Yoselin Ordonez



## HENGAMEH RAISSY (CONTINUED)

Oregon Research Institute .....	\$13,142
<i>Adaptation and Evaluation of a Family-Based Mindful Eating Intervention for Overweight Adolescents</i>	
AstraZeneca Pharmaceuticals, LP .....	\$10,110
<i>Clinical Trial Agreement - Phase 3</i>	
Parexel International .....	\$2,931
<i>Clinical Trial Agreement - Phase 3 - Supplement</i>	

## MARY RAMOS

American Academy of Pediatrics .....	\$2,000
<i>Promoting Healthy Eating and Literacy at East San Jose Elementary School</i>	

## ALYA REEVE

New Mexico Department of Health .....	\$52,750
<i>Continuum of Care - Mortality</i>	

## JENNIFER VICKERS

New Mexico Department of Health .....	\$968,803
<i>Continuum of Care - Primary</i>	

## KRISTI WATTERBERG

NIH/National Heart, Lung, and Blood Institute .....	\$373,608
<i>Adrenal Function and Adverse CV Outcomes at Age 6 After Extremely Preterm Birth</i>	
NIH/National Institute of Child Health and Human Development ...	\$294,683
<i>Cooperative Multicenter Neonatal Research Network</i>	
Research Triangle Institute .....	\$104,968
<i>Cooperative Multicenter Neonatal Research Network - Capitation</i>	
National Institutes of Health .....	\$3,760
<i>Effect of Hydrocortisone on the Cardiac Mass of Premature Incubated Infants</i>	

## STUART WINTER

Children's Hospital of Philadelphia .....	\$15,000
<i>Clinical Trial Agreement - Phase 3</i>	
New Mexico Department of Health .....	\$15,000
<i>Children's Medical Services - Camp Enchantment</i>	

## CRAIG WONG

The Children's Mercy Hospital .....	\$69,773
<i>Ckid Clinical</i>	
The Children's Mercy Hospital .....	\$17,800
<i>Ckid Steering Committee</i>	

## Pediatrics Center for Development & Disability

### TANYA BAKER-MCCUE

New Mexico Division of Vocational Rehabilitation .....	\$400,000
<i>DVR Partners for Employment</i>	
New Mexico Division of Vocational Rehabilitation .....	\$300,000
<i>DVR Project Search</i>	
New Mexico Developmental Disabilities Planning Council .....	\$160,000
<i>InfoNet/BabyNet</i>	
New Mexico Developmental Disabilities Planning Council .....	\$15,000
<i>School-to-Work Alliance</i>	
New Mexico Developmental Disabilities Planning Council .....	\$2,500
<i>NM LEND Legislative Advocacy Seminar</i>	

### ANTHONY CAHILL

New Mexico Human Services Department .....	\$450,455
<i>Increasing the Quality of Life of New Mexicans with Brain Injuries and Caregivers Through Effective Support Services - BAA</i>	
HRSA/Maternal and Child Health Bureau .....	\$249,879
<i>New Mexico Perinatal and Infant Oral Health Quality Improvement Project</i>	
New Mexico Human Services Department .....	\$241,631
<i>Increasing the Quality of Life of New Mexicans with Brain Injuries and Caregivers Through Effective Support Services</i>	
New Mexico Human Services Department .....	\$208,825
<i>Increasing the Quality of Life of New Mexicans with Brain Injuries and Caregivers Through Effective Support Services</i>	
New Mexico Governor's Commission on Disability .....	\$60,000
<i>Support for the Southwest Disability Conference</i>	
New Mexico Governor's Commission on Disability .....	\$60,000
<i>Support for the Southwest Disability Conference</i>	
New Mexico Developmental Disabilities Planning Council .....	\$10,000
<i>DDPC Stipends</i>	

### LORETTA CORDOVA DE ORTEGA

Qualis Health .....	\$80,625
<i>In-Home Assessments for Medically Fragile Waiver - BAA</i>	
Molina Healthcare of New Mexico .....	\$10,000
<i>In-Home Assessments</i>	

### ANDREW HSI

New Mexico Department of Health .....	\$86,500
<i>DDSD FIT</i>	

### CATHERINE MCCLAIN

New Mexico Human Services Department .....	\$2,000,000
<i>Improving Quality (75/25 &amp; 50/50 Medicaid Match) Supporting Child Development Through Evidence-Based Practices</i>	
Region IX Education Cooperative .....	\$8,600
<i>CYFD Early Childhood Professional Development</i>	

### MARCIA MORIARTA

New Mexico Department of Health .....	\$3,116,000
<i>Autism Programs - BAA</i>	
New Mexico Children, Youth and Families Department .....	\$939,672
<i>ACA-Nurse Family Partnership Program (FY 16)</i>	
New Mexico Department of Health .....	\$827,000
<i>Race To The Top Early Learning Challenge - BAA</i>	
New Mexico Department of Health .....	\$755,969
<i>Administrative Support - Intensity Scale in New Mexico (FY 16)</i>	
HHS/Administration for Community Living .....	\$545,919
<i>University Center for Excellence in Development Disabilities Education</i>	



Erin Watson

HHS/Administration for Community Living.....	\$535,215
<i>University Center for Excellence in Development Disabilities Education</i>	
New Mexico Department of Health .....	\$496,415
<i>DDSD Partners for Employment (FY 15)</i>	
New Mexico Department of Health .....	\$416,000
<i>Early Childhood Network - BAA</i>	
New Mexico Department of Health .....	\$406,000
<i>Early Childhood Network</i>	
New Mexico Children, Youth and Families Department .....	\$344,554
<i>ACA-Nurse-Family Partnership Program (FY 16)</i>	
New Mexico Department of Health .....	\$237,760
<i>Improving the Quality of Life of New Mexico Youth With Disabilities in Transition</i>	
New Mexico Children, Youth and Families Department .....	\$150,000
<i>Infant Mental Health Team (FY 15)</i>	
New Mexico Department of Health .....	\$127,274
<i>NM SAFE Program</i>	
New Mexico Department of Health .....	\$111,607
<i>DDSD Statewide Training Database</i>	
New Mexico Department of Health .....	\$111,607
<i>DDSD Statewide Training Database</i>	
New Mexico Department of Health .....	\$106,191
<i>Project SET (Specialized Early Teaching) - BAA</i>	
New Mexico Department of Health .....	\$106,191
<i>Project SET (Specialized Early Teaching)</i>	
Navajo Nation.....	\$76,000
<i>Growing in Beauty Program Therapy Services</i>	
New Mexico Department of Health .....	\$76,000
<i>Medically Fragile Case Management Program Contract</i>	
New Mexico Department of Health .....	\$35,400
<i>Statewide Transition Coordination</i>	
New Mexico Department of Health .....	\$35,400
<i>Statewide Transition Coordination</i>	
New Mexico Department of Health .....	\$20,250
<i>Deaf-Blind Match - BAA</i>	
New Mexico Department of Health .....	\$19,238
<i>Deaf-Blind Match</i>	
New Mexico Children, Youth and Families Department .....	\$16,000
<i>Community of Practice Training - BAA</i>	
<b>PAT OSBOURN</b>	
New Mexico Public Education Department.....	\$1,439,992
<i>PED Pre-K Race to the Top Early Learning Challenge (FOCUS TQRIS)</i>	
New Mexico Public Education Department.....	\$482,119
<i>PED Pre-K Race to the Top Early Learning Challenge (FOCUS TQRIS)</i>	
New Mexico Public Education Department.....	\$478,549
<i>PED Contract (ASBS, SET, Deaf-Blind, PSN)</i>	
New Mexico Public Education Department.....	\$478,548
<i>PED Contract</i>	
U.S. Department of Education .....	\$100,912
<i>Project for New Mexico Children Who Are Deaf-Blind</i>	
New Mexico Developmental Disabilities Planning Council .....	\$62,500
<i>Partners in Policymaking</i>	
Rio Rancho Public Schools.....	\$33,000
<i>Rio Rancho Public Schools Consultations</i>	



Lauren Carrica

Albuquerque Public Schools.....	\$3,630
<i>Albuquerque Public Schools Consultations</i>	
Mora Independent Schools.....	\$1,102
<i>Mora Independent Schools Consultations</i>	

## Pediatrics Prevention & Population Sciences

### THERESA CRUZ

New Mexico Human Services Department .....	\$128,361
<i>Statewide SNAP-Ed Evaluation</i>	
Presbyterian Healthcare Services .....	\$89,268
<i>REACH Evaluation</i>	
New Mexico Department of Health .....	\$53,000
<i>PRC Sexual Violence Prevention Technical Assistance Project</i>	
New Mexico Department of Health .....	\$45,000
<i>PRC Sexual Violence Prevention Technical Assistance Project</i>	

### SALLY DAVIS

HHS/Centers for Disease Control and Prevention .....	\$83,200
<i>Nutrition and Obesity Policy Research and Evaluation in Early Childcare Settings Serving Southwest American Indian and Hispanic Populations</i>	
New Mexico Department of Health .....	\$75,000
<i>Teen Outreach Program (FY 15)</i>	
United Way .....	\$70,000
<i>Promoting Healthy Lives (ACL Teen Centers)</i>	
New Mexico Department of Health .....	\$20,000
<i>Implementing Evidence-Based Recommendations that Promote Healthy Activities</i>	
New Mexico Primary Care Association .....	\$15,000
<i>Integrated Medicaid Enrollment</i>	
New Mexico Department of Health .....	\$7,275
<i>Implementing Evidence-Based Recommendations that Promote Healthy Activities</i>	

### GLENDIA FALLAS

New Mexico Human Services Department .....	\$189,137
<i>CHILE Plus, Social Marketing and Statewide SNAP-ED Evaluation</i>	

### PATRICIA KEANE

New Mexico Human Services Department .....	\$422,685
<i>CHILE Plus, Social Marketing and Statewide SNAP-ED Evaluation</i>	

### SHIRAZ MISHRA

NIH/National Institutes of Health .....	\$252,185
<i>New Mexico's Future Researchers Exploring Science and Health (SEPA)</i>	



Cédric Cleyrat, PhD

### LINDA PEÑALOZA

New Mexico Department of Health Youth Risk and Resiliency Survey Project	\$204,430
New Mexico Department of Health Youth Risk and Resiliency Survey Project	\$100,869
New Mexico Department of Health Tobacco Program Evaluation and Support HEART	\$74,905
New Mexico Department of Health Youth Risk and Resiliency Survey Project	\$50,000
New Mexico Public Education Department ESHE Evaluation	\$32,000
New Mexico Public Education Department ESHE Evaluation	\$32,000
New Mexico Public Education Department ESHE Evaluation	\$18,093
New Mexico Public Education Department ESHE Evaluation	\$8,000

### Psychiatry and Behavioral Sciences

#### CHRISTOPHER ABBOTT

The Mind Research Network Project 5-Abbott-Multimodal Imaging of Neuropsychiatric Disorders: Mechanisms & Biomarkers (COBRE II)	\$177,724
---	-----------

#### CHERYL AINE

The Mind Research Network MDA-Aine-Multimodal Imaging of Neuropsychiatric Disorders: Mechanisms & Biomarkers (COBRE II)	\$81,754
The Mind Research Network ADA-Aine-Multimodal Imaging of Neuropsychiatric Disorders: Mechanisms & Biomarkers (COBRE II)	\$55,222

#### DEBORAH ALTSCHUL

W.K. Kellogg Foundation New Mexico Learning and Evaluation Consortium	\$403,487
New Mexico Behavioral Health Collaborative/Human Services Department Screening, Brief Intervention and Referral to Treatment - BAA	\$257,158
New Mexico Children, Youth and Families Department CYFD System of Care - BAA	\$232,333
San Felipe Pueblo KEYWAH II	\$110,337

### PAMELA ARENELLA

The Mind Research Network Effectiveness of Varenicline: Testing Individual Differences	\$13,000
---	----------

### JERALD BELITZ

HHS/Health Resources and Services Administration Psychology Internship Expansion Grant	\$122,099
---	-----------

### JEANNE BEREITER

San Felipe Pueblo San Felipe Home Visiting FY 15	\$69,668
New Mexico Children, Youth and Families Department Rural Psychiatric Services-Child Fellowship Training	\$63,100
Anonymous Home Visiting	\$28,000

### MICHAEL BOGENSCHUTZ

National Institutes of Health Comparing Interventions for Opioid-Dependent Patients Presenting in Medical EDs	\$632,425
New Mexico Children, Youth and Families Department ASAP Adolescent Addictions - BAA	\$169,220

### CAROLINE ALBERTA BONHAM

New Mexico Behavioral Health Collaborative/ New Mexico Human Services Department Behavioral Health Services (FY 15)	\$790,377
New Mexico Human Services Department Behavioral Health Services (FY 16)	\$651,843
Albuquerque Area Indian Health Service Albuquerque Area IHS Center for Telehealth Excellence Project FY 15 - BAA	\$359,334
Hidalgo Medical Services Hidalgo Medical Services, Inc. - Psychiatric Services - BAA	\$150,000
New Mexico Human Services Department Behavioral Health Services	\$142,348
New Mexico Human Services Department Behavioral Health Services	\$142,348
NIH/National Institute on Drug Abuse NIMH Outreach Partnership	\$7,500

### JUAN BUSTILLO

The Mind Research Network ACAM-Bustillo-Multimodal Imaging of Neuropsychiatric Disorders: Mechanisms & Biomarkers (COBRE II)	\$356,488
Otsuka Pharmaceutical Development & Commercialization, Inc. Clinical Trial Agreement - Phase 1	\$200,000
University of Texas Clinical Trial Agreement - Phase 4	\$137,610
The Mind Research Network A Multidimensional Investigation of Cognitive Control Deficits in Psychopathology	\$45,221
The Mind Research Network A Multidimensional Approach for Cognitive Control Deficits in Psychopathology	\$44,658

### RICHARD CAMPBELL

Albuquerque Public Schools Neuropsychiatric Evaluations - BAA	\$101,652
--	-----------

### ANNETTE SUSAN CRISANTI

OptumHealth New Mexico OptumHealth - Adult Transformation: Healthy Homes	\$37,291
OptumHealth New Mexico OptumHealth - Adult Transformation: Healthy Homes	\$37,291



**ERIK ERHARDT**

The Mind Research Network .....\$15,871  
*BNI-Erhardt-Multimodal Imaging of Neuropsychiatric Disorders: Mechanisms & Biomarkers (COBRE II)*

**DAVID GRAEBER**

Bernalillo County Juvenile Detention Center .....\$76,530  
*Professional Services*

**PAULA HENSLEY**

INNO Clinical Outcomes LLC ..... \$178,400  
*Clinical Trial Agreement - Phase 1*

INNO Clinical Outcomes LLC ..... \$118,608  
*Clinical Trial Agreement - Phase 2*

**BRIAN ISAKSON**

OptumHealth New Mexico .....\$39,320  
*Veterans First Jail Diversion Project*

OptumHealth New Mexico .....\$25,000  
*Military, Veteran and Family Support Services*

OptumHealth New Mexico .....\$25,000  
*Military, Veteran and Family Support Services*

**AVRON KRIECHMAN**

New Mexico Department of Health ..... \$125,000  
*Telehealth School-Based Health Centers*

**STEPHEN LEWIS**

Feinstein Institute for Medical Research ..... \$114,585  
*ACA-Improving Care & Reducing Cost*

Feinstein Institute for Medical Research .....\$12,081  
*RAISE Extension - Part II*

Feinstein Institute for Medical Research .....\$8,338  
*RAISE Extension - Part I*

**RASHMI SABU**

HHS/Substance Abuse and Mental Health Services Administration.. \$399,769  
*Addressing Childhood Trauma through Intervention, Outreach and Networking*

**JULIE GRIFFIN SALVADOR**

New Mexico Children, Youth and Families Department ..... \$147,413  
*Communities of Care (CYFD SOC Expansion) FY 16 - BAA*

New Mexico Children, Youth and Families Department ..... \$110,157  
*Communities of Care (CYFD SOC Expansion) FY 15 - BAA*

OptumHealth New Mexico .....\$34,690  
*Treatment for Pregnant and Postpartum Women*

OptumHealth New Mexico .....\$28,100  
*NIDA Total Community Approach*

**HELENE SILVERBLATT**

New Mexico Department of Health ..... \$225,000  
*Public Psychiatry Program*

**ROBERT THOMA**

The Mind Research Network ..... \$147,731  
*Multimodal Imaging of Neuropsychiatric Disorders: Mechanisms & Bio-Markers (COBRE II) Project 4*

The Mind Research Network .....\$14,777  
*Multimodal Imaging of Neuropsychiatric Disorders: Mechanisms & Bio-Markers (COBRE II)*

**MAURICIO TOHEN**

Dartmouth College..... \$170,377  
*Clozapine for Cannabis Use Disorder in Schizophrenia*

The Peak at Santa Teresa, Inc. ....\$25,000  
*Telemedicine Services*

**CLAIRE ELIZABETH WILCOX**

NIH/National Institute on Alcohol Abuse and Alcoholism ..... \$180,013  
*Neural Mechanisms of Change During Alcohol Use Disorder Treatment with Prazosin*

**MARIA YELLOW HORSE BRAVE HEART**

NIH/National Institute on Alcohol Abuse and Alcoholism ..... \$140,273  
*Iwakapiya - Healing: Historical Trauma and Group IPT for American Indians*

**Radiology****LOREN KETAI**

NIH/National Center for Complementary and Integrative Health .... \$179,929  
*Brain-Centered Therapy vs. Medication for Urgency Urinary Incontinence: An RCT - MPI*

**REED SELWYN**

X-Ray Associates of New Mexico .....\$55,000  
*Medical Physicist Services*

**PHILIP WIEST**

U.S. Department of Veterans Affairs .....\$1,283,245  
*Radiological and Nuclear Medicine Diagnostics and Therapy Services*

U.S. Department of Veterans Affairs ..... \$733,333  
*Radiological and Nuclear Medicine Diagnostic and Therapy Services*

New Mexico Department of Health .....\$83,018  
*Breast and Cervical Cancer Early Detection Program*

New Mexico Department of Health .....\$20,000  
*Breast and Cervical Cancer Early Detection Program*

U.S. Department of Veterans Affairs .....\$7,318  
*Radiological and Nuclear Medicine Diagnostic and Therapy Services*

**Surgery****ARUP DAS**

NIH/National Institute of Environmental Health Sciences ..... \$339,750  
*Inflammatory Chemokines: A Novel Target in Early Diabetic Retinopathy*

New Mexico VA Health Care System.....\$41,420  
*IPA-Caroline Franco Nitta*

NIH/National Institute of Environmental Health Sciences .....\$30,200  
*Inflammatory Chemokines: A Novel Target in Early Diabetic Retinopathy*

**THOMAS HOWDIESHELL**

Astute Medical Inc. ....\$35,000  
*Clinical Trial Agreement - Phase 4*



Mara Steinkamp, PhD

**MARCO RICCI**

Datascope Corp. ....\$50,000  
*Intra-Aortic Balloon Pump Review & Consultation*

**JOHN RUSSELL**

New Mexico Donor Services .....\$30,000  
*Organ Procurement Services*

**ANIL SHETTY**

New Mexico Department of Health .....\$3,000  
*CMS Cleft Palate Clinics*

**TIMOTHY WINTER**

Jaeb Center for Health Research .....\$32,371  
*Amblyopia Treatment Study (ATS18)*

**Undergraduate Medical Education****PAMELA DEVOE**

American Association of Medical Colleges .....\$2,000  
*Does Near-Peer Tutoring Facilitate Medical Student Learner Self-Efficacy?*

**UNIVERSITY OF NEW MEXICO HOSPITAL****STEVE MCKERNAN**

City of Albuquerque. ....\$713,300  
*Assertive Community Treatment Program - FY 15 - BAA*

City of Albuquerque. ....\$183,000  
*Gang Prevention Program - BAA*

City of Albuquerque. ....\$161,970  
*Primary Care Program - BAA*

New Mexico Children, Youth and Families Department .....\$54,000  
*Home Visits and Education*

Albuquerque Area Indian Health Service .....\$25,000  
*IHS Inpatient Psychiatric Services Agreement*

Albuquerque Health Services. ....\$25,000  
*Opioid Treatments (Emergency Medicating Agreement)*

**RODNEY MCNEASE**

Albuquerque Public Schools. ....\$8,000  
*Behavioral Health Assessment and Treatment for Students*

**UNIVERSITY OF NEW MEXICO MEDICAL GROUP****ANTHONY MASCIOTRA**

New Mexico Children, Youth and Families Department .....\$179,910  
*Professional Services - BAA*

Albuquerque Area Indian Health Service .....\$25,000  
*Provider Services Agreement*

**UNM SANDOVAL REGIONAL MEDICAL CENTER****KEVIN ROGOLS**

Sandoval County .....\$14,000  
*Sandoval County DWI and Prevention Program*



*Rob Oliver*

# RESEARCH MEANS HOPE



## Donate to Research

Our research programs are focused on critical health problems affecting New Mexicans and bridge the gap to more rapidly deliver discoveries to the clinical setting. Your contribution will help us meet new challenges and seek solutions to help people lead longer and healthier lives. The UNM Foundation can accommodate almost any giving interest, including health research in general, a particular disease category, or one of our signature programs.

**Please contact Bill Uher for more information**  
**[bill.uher@unmfund.org](mailto:bill.uher@unmfund.org) or 505.277.4078**

---

## RESEARCH ANNUAL REPORT 2015

### *Managing Editor*

Michael Haederle

### *Design, Layout and Illustration*

Sara Mota

### *Contributing Editors*

Furhana Afrid; John Arnold; Cindy Foster; Luke Frank;  
Leslie Linthicum; Pari Noskin; Heidi Rishel Brakey; Michele Sequeira

### *Photography*

Furhana Afrid; John Arnold; Rebecca Gustaf; Sara Mota  
*Photograph on page 3 by Kim Jew Photography*

### *Videography*

Furhana Afrid; John Arnold; Rebecca Gustaf  
Related videos: <https://vimeo.com/album/3663079>

© Copyright 2015

University of New Mexico

Health Sciences Center Office of Research

[hsc.unm.edu/research](http://hsc.unm.edu/research)

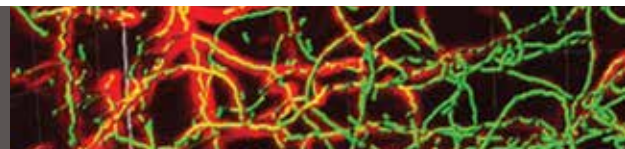
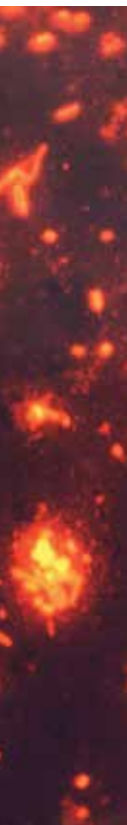
Published by the HSC Communications and Marketing Department

Special thanks to the Office of Pre-Award for their assistance





Office of Research  
1 University of New Mexico  
MSC08-4560, BMSB B-61  
Albuquerque, New Mexico 87131-0001  
(505) 272-6950 • FAX (505) 272-8738  
[hsc.unm.edu/research](http://hsc.unm.edu/research)



## RESEARCH ANNUAL REPORT 2015

