



UNIVERSITY OF NEW MEXICO HEALTH SCIENCES CENTER

# Discovery

Research Annual  
Report 2018

HSC Bioscience Yields  
Health & Economic  
Benefits for New Mexico

THE VALUE OF RESEARCH

## **UNM Health Sciences Center Research Annual Report 2018**

**Managing Editor**  
Michael Haederle

**Design**  
Jana Fothergill

**Contributing Editors**  
Michele Sequeira  
Kara Leasure Shanley  
Tamara Young

**Photography**  
Jett Loe  
Allan Stone  
HSC Communications  
iStock by Dreamstime

©2018 University of New Mexico  
Health Sciences Center Office  
of Research  
[hsc.unm.edu/research](http://hsc.unm.edu/research)

Published by the HSC  
Communications Department

Special thanks to Stacy Bigbie and  
Tamaya Toulouse, MBA, for their  
assistance

Printed by Starline Printing,  
Albuquerque, N.M.

See inside back cover for information  
on donating to bioscience research at

**Contact**  
voice 505-272-6950  
fax 505-272-8738  
[hsc.unm.edu/research](http://hsc.unm.edu/research)

## **UNM Health Sciences Center** *Vision, Mission and Core Values*

---

### **VISION**

The University of New Mexico Health Sciences Center will work with community partners to help New Mexico make more progress in health and health equity than any other state.

### **MISSION**

We will provide an opportunity for New Mexicans to obtain an excellent education in health sciences, advance health discovery and innovation in the most important areas of human health and ensure that all populations in New Mexico have access to the highest-quality health care.

### **CORE VALUES**

The UNM Health Sciences Center's mission is guided by our values of excellence in education; patient care and research; commitment to service; quality and safety; integrity and accountability; respect and compassion for all people; teamwork and collaboration and providing hope for those we serve.

# Research Annual Report 2018

## CONTENTS

### LETTERS

|                                                                 |   |
|-----------------------------------------------------------------|---|
| Paul B. Roth, MD, MS, Chancellor for Health Sciences            | 2 |
| Richard S. Larson, MD, PhD, Executive Vice Chancellor           | 3 |
| Christine Kasper, PhD, RN, Dean, College of Nursing             | 4 |
| Donald Godwin, PhD, Dean, College of Pharmacy                   | 5 |
| Karen Armitage, MD, Interim Dean, College of Population Health  | 6 |
| Martha Cole McGrew, MD, Executive Vice Dean, School of Medicine | 7 |

### FEATURES

|                                                                                                                          |                          |
|--------------------------------------------------------------------------------------------------------------------------|--------------------------|
| <b>Collateral Benefits</b>                                                                                               | 8                        |
| HSC Bioscientific Research Spurs Economic Growth<br><i>Michael Haederle</i>                                              |                          |
| <b>Prenatal Protection</b>                                                                                               | 11                       |
| C. Fernando Valenzuela Explores the Cellular Basis<br>of Fetal Alcohol Spectrum Disorders<br><i>Kara Leasure Shanley</i> |                          |
| <b>Improving the Odds</b>                                                                                                | 12                       |
| Sarah Adams Searches for More Effective Ovarian Cancer<br>Treatments<br><i>Michele Sequeira</i>                          |                          |
| <b>Growing Support With the TREE Grant</b>                                                                               | 14                       |
| Lisa Cacari Stone Aims to Improve Behavioral Health Care<br>for Underserved New Mexicans<br><i>Tamara Young</i>          |                          |
| <b>Keeping Research on Track</b>                                                                                         | 16                       |
| Beth Tigges Leads the Clinical & Translational Science<br>Center's Evaluation Program<br><i>Michael Haederle</i>         |                          |
| <b>Breathing Easier</b>                                                                                                  | 18                       |
| Curiosity Drives Matt Campen's Inhaled Particulate Research<br><i>Kara Leasure Shanley</i>                               |                          |
| 2018 HSC Training Grants                                                                                                 | 20                       |
| 2018 Research Excellence Awards                                                                                          | 24                       |
| 2018 HSC Grant Listings                                                                                                  | 27                       |
| Information for Donors                                                                                                   | <b>Inside back cover</b> |





PAUL B. ROTH, MD, MS

## Chancellor for Health Sciences

I want to congratulate our research faculty for another successful year, with many impactful accomplishments, some of which you'll read about in this year's Research Annual Report. It's worth noting that these achievements have come while we have continued to attract substantial extramural funding that has helped to stimulate our state's economy.

Research to find cures and treatments for disease and disability plays an enormously important role in helping the UNM Health Sciences Center meet its mission of improving the health and well-being of all New Mexicans. This year, we have identified three targeted institutional initiatives to maximize the impact of our efforts – and each of them has a strong research component.

The first is child well-being, the foundation for a healthy population now and for decades to come. Our laboratory scientists, community-based researchers and clinical providers have teamed up to study the impact on child development of prenatal exposure to alcohol and other substances, as well as strategies for attenuating the lingering effects of adverse childhood experiences.

We are also promoting successful aging, recognizing that in a dozen years, New Mexico is expected to have one of the oldest populations in the nation.

Cutting-edge cancer research and a new focus on diagnosing and finding treatments for various forms of dementia hold out the prospect for a healthier future for all.

Behavioral health and the related problem of opioid use disorder have a significant impact on our communities. The faculty in the College of Population Health are partnering with colleagues across the university to implement targeted behavioral health interventions for our state's under-resourced communities through the Transdisciplinary Research, Equity and Engagement (TREE) Center.

*This year, we have identified three targeted institutional initiatives to maximize the impact of our efforts . . .*

In addition, expected growth in federal funding for behavioral health research will help support further studies of the underlying mechanisms of these diseases, with the possibility of developing new treatments.

The dedication and professionalism of our research community is a continual source of inspiration – and a potent source of hope for the future. I am deeply grateful for their contribution. ■







RICHARD S. LARSON, MD, PhD

## Executive Vice Chancellor for Health Sciences

I'm extremely pleased to report that the University of New Mexico Health Sciences Center research enterprise has seen another very successful year of innovation and growth. Our research scientists received an impressive \$185 million in extramural funding for FY 2017-2018, bringing our cumulative funding total to nearly \$1.7 billion since 2007.

This record of successful grant funding at the Health Sciences Center has had a sizable impact on New Mexico's health, fueled economic activity and created jobs. Many new discoveries that positively impact the health of New Mexicans have been made here. In addition, patented technology developed on our campus has spurred the creation of dozens of biotechnology startups in recent years that have created clean, high-paying jobs in the state.

Lately, we have been playing a key role in kickstarting New Mexico's biotechnology sector. I chair the New Mexico Bioscience Authority, a public-private partnership created by the Legislature to help attract and retain new biotech businesses. The Bioscience Authority recently welcomed the arrival of Bright Path, a firm that uses

innovative bioreactor technology to dramatically speed the production of pharmaceuticals. Bright Path is leasing manufacturing space on our campus and based its decision to locate in New Mexico in part on its proximity to the expertise of Health Sciences Center researchers.

Our Clinical & Translational Science Center is also sharing in a three-year \$3.5 million Small Business Technology Transfer grant to help biomedicine researchers at 11 schools in seven Western states speed commercialization of their inventions. We'll develop the educational program here in Albuquerque in partnership with a Seattle-based product development company.

In the coming year we expect to continue growing our research efforts, with a special focus on the areas of behavioral health and substance abuse disorder. We'll also reprise our very successful Health Hackathon and Bioventure events. And we're ramping up the renewal process for our Clinical and Translational Science Award and our Comprehensive Cancer Center grant.

In the meantime, stay tuned for new developments! ■







CHRISTINE KASPER, PHD, RN

## Dean College of Nursing

I have been extremely impressed by the faculty and staff I have gotten to know in the College of Nursing since assuming the deanship a few months ago. I am learning a great deal about its long and impressive history of promoting clinical care, educating the state's nursing workforce and conducting research for the benefit of New Mexicans.

I have been tasked by UNM President Garnett S. Stokes and Chancellor Paul B. Roth with rebuilding and bolstering the College's research mission, with a stronger focus on basic and translational science. This is a core part of our role as an R1 research university, and I know from my own experience the many ways in which research informs clinical education – and how education in turn shapes the research agenda.

The keystone in making this vision a reality will be to recruit highly ranked research leaders to the College to help define that agenda and attract new grant funding.

Toward that end, we are engaged in a national search to fill the newly

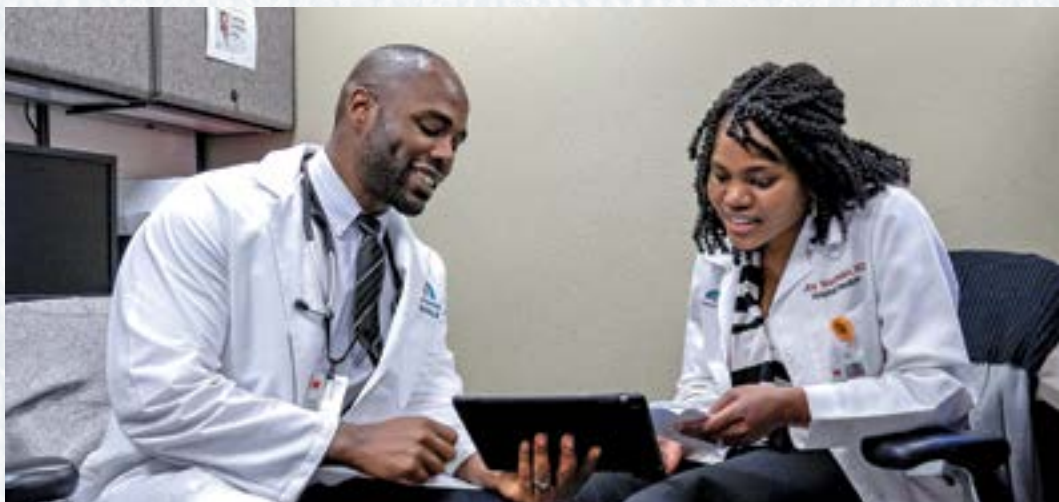
created position of associate dean for research and scholarship.

And, with several recent retirements in the College, I'm hoping to build our research capacity by hiring new tenure-track faculty, not all of whom will necessarily have nursing backgrounds.

I believe that these additions to our faculty will help promote interdisciplinary collaborations within the College – and across the Health Sciences Center and the University as a whole.

Meanwhile, I'm very pleased to report that we are building dedicated laboratory space for College of Nursing researchers in the Med II building, with enough room to accommodate several scientists.

With these investments in our future, I'm confident that our College of Nursing is poised to build a national reputation for research expertise in investigating environmental toxins, the health care consequences of chronic poverty and the unique needs of our rural, underserved and Native American populations. ■







DONALD GODWIN, PhD

## Dean College of Pharmacy

**R**esearch at the College of Pharmacy continues to grow at a remarkable pace. In FY18, the College received more than \$12.3 million in extramural funding, marking an increase of nearly 120 percent over our funding just five years ago.

Our sponsors include the National Institutes of Health, the Environmental Protection Agency, the Centers for Disease Control and Prevention, the Health Resources and Services Administration and the American Heart Association, as well as numerous industry, foundation and state research partnerships.

Moreover, the College continues its presence near the top of the national research rankings. The College ranks 13th in the nation among 133 colleges of pharmacy in NIH research funding and 21st in total extramural funding in the American Association of Colleges of Pharmacy's most recent research rankings.

Researchers in the College hold nearly 40 active U.S. patents and dozens of pending patent applications. These outstanding results and accomplishments further distinguish the College as a preeminent research institution.

The College boasts four federally funded and nationally recognized programmatic center grants involving multidisciplinary teams of environmental health researchers. They are examining the effects of heavy metal exposure from abandoned mines on tribal populations and developing community-based research plans to educate those affected about their risk factors. Ultimately, our scientists are striving to reverse the effects of toxic exposures. Through these programmatic grants, we are also training and mentoring the next generation of environmental health scientists.

Our researchers are also working to improve outcomes for infants prenatally exposed to opioids and changing current standards of care for neonatal abstinence syndrome. Work is also being carried out in a number of critical patient populations, including young adults with HIV, transgender patients, TB testing and treatment in the community pharmacy and patients with atrial fibrillation.

I want to express my deep appreciation and gratitude to the faculty, staff and students in the College of Pharmacy who perform and disseminate our research to improve the health of our local and global communities. ■







KAREN ARMITAGE, MD

## Interim Dean College of Population Health

### “Why are some people healthy and others not?”

**T**his question, posed in the title of a book published in 1994, introduced the new concept of population health into public health and medical literature. Over the past decade, virtually every sector of the health care system has reexamined its processes, products and outcomes using a population health lens.

The newest college at UNM, the College of Population Health, is front and center in this new era, with key roles in the measurement of cost, quality and effectiveness of health interventions and recruitment and training of the population health workforce.

Our long record of success in community-based participatory research continues through the Center for Participatory Research, while the college's newest center, the Transdisciplinary Research, Equity and Engagement (TREE) Center for Advancing Behavioral Health, has completed its first full year tackling behavioral health

and substance abuse issues in New Mexico's underserved communities.

Our research studying the effects of workplace toxins on mothers and babies enters its second year, and the College has just received new grant and contract awards to study the health of agricultural workers.

New collaborations with the UNM Honors College, the Colleges of Pharmacy and Nursing, the Department of Family & Community Medicine, the Office for Community Health, the City of Albuquerque and Bernalillo County have further expanded our research, teaching and service activities. We are especially pleased to report that our undergraduate program grew 15 percent in enrollment this fall, an important pipeline to our master's degree in public health.

As we wrap up our third year as a college, we look forward to welcoming a new dean in the summer of 2019, and a new leader to help us realize the unlimited potential of the College of Population Health in the exciting new era of population health science. ■







MARTHA COLE MCGREW, MD

## Executive Vice Dean, School of Medicine

**T**he research conducted by our scientists and clinicians is so central to everything that we do in the School of Medicine.

It is an integral part of our academic mission and plays an essential role in helping us with our commitment to improve the health of New Mexicans.

This year, we have some really impressive research achievements to celebrate.

One is the prestigious MERIT award from the National Institutes of Health that recognizes the pioneering work in autophagy done by Vojo Deretic, PhD, professor and chair of the Department of Molecular Genetics & Microbiology. The MERIT (for Method to Extend Research in Time) award means that Dr. Deretic, who joined the UNM Health Sciences Center in 2001, will have his research funded for another eight to 10 years without having to undergo a competitive renewal process.

Dr. Deretic meanwhile also received funding renewal for the grant supporting his Autophagy and Inflammation Center.

Dan Savage, PhD, Regent's Professor in the Department of Neurosciences and director of the New Mexico

Alcohol Research Center, won renewal of his P50 grant, which supports the center's research into Fetal Alcohol Spectrum Disorders and other related conditions.

Sarah Adams, MD, assistant professor in the Department of Pediatrics and The Victor and Ruby Hansen Surface Endowed Professor in Ovarian Cancer Research at the UNM Comprehensive Cancer Center, is exploring a new method for fighting ovarian cancer that holds great promise.

Our reach extends well beyond New Mexico. Eric Prossnitz, PhD, professor in the Department of Internal Medicine, is sharing in a three-year \$3.5 million grant from the National Institute of General Medical Sciences to help researchers in seven Mountain West states develop their capacity to commercialize their inventions.

Finally, I'm very excited to announce that we have created a new Office of Research Education. Nancy Kanagy, professor of Cell Biology & Physiology, who has done a great job leading our Biomedical Sciences Graduate Program, will serve as interim senior associate dean for research education. ■









# Planting the Seeds for Success

## HSC Research Spurs the Growth of Bioscience in New Mexico

---

By Michael Haederle

**T**he biomedical research conducted each year at the University of New Mexico Health Sciences Center ranges from bench to bedside and holds the potential for therapies and cures that can save lives and alleviate suffering.

But the work of HSC researchers also promises something equally impactful: it could well serve as the cornerstone for a growing bioscience industry that may one day help transform New Mexico.

“Bioscience promises to diversify the state’s economy by creating green, sustainable jobs at all educational levels,” says Richard S. Larson, MD, PhD, the HSC’s executive vice chancellor and vice chancellor for research. “We have all the foundational elements to begin to target the growth of the bioscience industry.”

The first – and most important – resource is human, Larson says. In UNM the state has a major research university with a thriving bioscience research enterprise, which, along with two national laboratories and other educational institutions, creates a critical mass of scientific expertise.

The second element is the availability of technology transfer organizations, such as STC.UNM, which can speed the process of

securing patents for and licensing of new technology and intellectual property, Larson says.

Next, a community of investors and entrepreneurs who are actively involved in business startups is needed to launch biotechnology companies that can commercialize drugs and technology developed at UNM, Larson says.

Finally, Larson says, a catalyst is needed to midwife the emergence of

*“Bioscience promises to diversify the state’s economy by creating green, sustainable jobs at all educational levels.”*

– Richard S. Larson, MD, PhD

---



new biotechnology businesses.

Fortunately, one is already at hand: “The New Mexico Bioscience Authority is charged with facilitating private-public investment, making recommendations for legislation to target the growth of the bioscience industry and developing programs that will assist in startups and relocation of bioscience companies to New Mexico,” Larson says.

The Bioscience Authority, which Larson chairs, is a public-private entity that was created by the New Mexico Legislature in 2017 to promote the growth of biotechnology in the state. A major part of its mission is devising strategies and incentives to attract investment in the state and provide turnkey solutions that simplify the process.

The Health Sciences Center has a major role to play, thanks to the rapid

expansion of its research mission over the past 15 years, Larson says.

Extramural funding amounted to \$185 million in the most recent fiscal year, while dozens of companies have been spun off from research conducted on campus.

Some standout examples include IntelliCyt, a New Mexico-headquartered company that commercialized high-throughput flow cytometry technology co-invented by UNM scientist Larry Sklar, PhD, and Biophagy LLC, a firm co-founded by Vojo Derectic, PhD, director of UNM’s Autophagy, Inflammation and Metabolism Center of Biomedical Research Excellence.

“The HSC research enterprise has grown robustly, so we have



the foundation needed,” Larson says. “STC has supported licensing the technology transfer of new discoveries created out of the HSC for new and existing companies in the bioscience space.”

The ranks of New Mexico-based angel and venture capital investors have grown in recent years, he adds.

“With this, we have the key pieces to recommend appropriate state and municipality investment and to develop the programs to support creation of new private startup companies and the relocation of existing biosciences businesses,” he says.

The coordinated strategy is already bearing fruit.

Bright Path, a firm that makes pharmaceuticals using cutting-edge bioreactor technology that trims costs and reduces waste, decided to locate its manufacturing facility in Albuquerque, drawn in part by its proximity to the resources at the Health Sciences Center and the business-friendly environment created by the Bioscience Authority.

The UNM Clinical & Translational Science Center (CTSC) is sharing in a three-year \$3.5 million Small Business Technology Transfer grant from the National Institute of General Medical Sciences to help biomedicine researchers in 11 schools in seven Western states develop their entrepreneurial skills to speed commercialization of their inventions.

“The goal is to educate faculty within the various institutions on how to commercialize their research, including startup funding and finding business partners,” says the CTSC’s Eric Prossnitz, PhD, who will serve as UNM’s principal investigator for the Accelerating Solutions for Commercialization and Entrepreneurial Development grant.

“We’ll be developing the educational program here in Albuquerque in partnership with Virtici, a Seattle-based product development company,” he says, adding that technology transfer offices will also be established at each of the participating institutions. The competitive grant awards to four regional business accelerators were

created as part of an ongoing effort to boost biomedical research in states that historically have not received as much federal funding.

“This has been more than a decade in the making,” Larson says of the economic development effort. “With what we have put in place, I believe that a decade from now we will have made tremendous strides.” ■

## New Mexico Bioscience Startups Based on HSC Research

|      |                                                        |      |                                                                                        |
|------|--------------------------------------------------------|------|----------------------------------------------------------------------------------------|
| 2018 | ShearIT<br>Spinceutica<br>BioZera                      | 2013 | Zocere<br>Ecopesticides International, Inc<br>Biophagy, LLC<br>Alpine Biosciences, LLC |
| 2016 | Cylenta Pharmaceuticals                                | 2011 | Avisa Pharma<br>Agilvax Inc.                                                           |
| 2015 | Exovita Biosciences<br>GHP Development LLC<br>TerraSol | 2010 | Respira Therapeutics, Inc.                                                             |
| 2014 | SolaranRX Inc.<br>Accelera Diagnostics LLC             | 2007 | Azano Pharmaceuticals Inc.<br>nanoMR                                                   |
|      |                                                        | 2006 | IntelliCyt                                                                             |





## Fernando Valenzuela Probes Prenatal Exposure Links to FASD

By Kara Leasure Shanley

**H**is journey began with receptors – miniscule proteins invisible to the naked eye that bind various chemicals – that are responsible for many physiological functions in your body, from nerve signals in your brain to the effects of drugs. “I was very intrigued by that interaction” says Carlos Fernando Valenzuela, MD, PhD, professor in the Department of Neurosciences.

But it was the mystery behind how alcohol affects those receptors that steered Valenzuela to the University of New Mexico. Now, as associate director of the New Mexico Alcohol Research Center, he gives his colleagues credit for transforming his fascination with the brain on alcohol into a passion for studying Fetal Alcohol Spectrum Disorders (FASD).

“I fell in love with the research because it combines all kinds of interesting issues – development, substance abuse, neuroscience, physiology, behavior,” Valenzuela says. “And it’s a very important public health problem.”

Many women believe it is acceptable to drink alcohol when pregnant, due to not knowing they are pregnant or thinking a little won’t do any harm. Still others have a dependence.

“They cut down and say, ‘I can still have a little bit of alcohol because I



Carlos Fernando Valenzuela, MD, PhD

hear that it’s safe,” Valenzuela says. “There is no safe level, of course.” Any amount of alcohol can increase the risk of FASD, diseases characterized by severe neurological and developmental damage to an unborn baby from prenatal alcohol exposure.

Alcohol abuse is endemic in New Mexico, which has held first, second or third place in the country for alcohol-related deaths for more than 30 years, according to the New Mexico Department of Health. But these issues are not just restricted to New Mexico.

The far-too-common occurrence of these disorders has motivated Valenzuela and his laboratory to study how alcohol affects the brains of developing babies. His latest research has focused on brain-derived neurotrophic factor (BDNF), a protein released by nerve cells that maintains neural connections.

Valenzuela recently reported that a mutated BDNF gene is a risk factor for FASD development. In mice, this mutation affects BDNF release from cells, resulting in significant developmental and behavioral consequences

if they have been exposed to alcohol as pups.

“We figure that not having that efficient release of BDNF could predispose you to more a severe phenotype when exposed to alcohol,” he explains. “And a significant proportion of the (human) population has that phenotype.” He hopes that this discovery will persuade other researchers to confirm the connection between mutated BDNF and FASD in humans.

Nevertheless, studying the brain always yields more questions to be answered – and more work to be done, which is why Valenzuela has shifted his attention to the riddle of how alcohol kills the neurons of young mice in a stage of development resembling the human third trimester.

Valenzuela is also confident in the future of the field, particularly where the New Mexico Alcohol Research Center and the students he trains as the director of the Alcohol Research Training Program are concerned. “It’s very rewarding, because you are helping the new generation of scientists,” Valenzuela says. ■



## Sarah Adams Tests a Drug Combination Against Ovarian Cancer in Human Clinical Trials

By Michele Sequeira

**F**ewer than half of women diagnosed with ovarian cancer live for five years or more. Those survival odds haven't changed significantly for some time, but Sarah Adams, MD, plans to improve them.

Adams, the Victor and Ruby Hansen Surface Endowed Professor in Ovarian Cancer Research at The UNM Comprehensive Cancer Center and an associate professor in the Department of Obstetrics & Gynecology, opened an ovarian cancer clinical trial based on her own discovery in March 2016.

With promising early results, Adams' trial was selected to be the

*"This is considered one of the highest, and most difficult, achievements that any cancer investigator or cancer center can attain."*

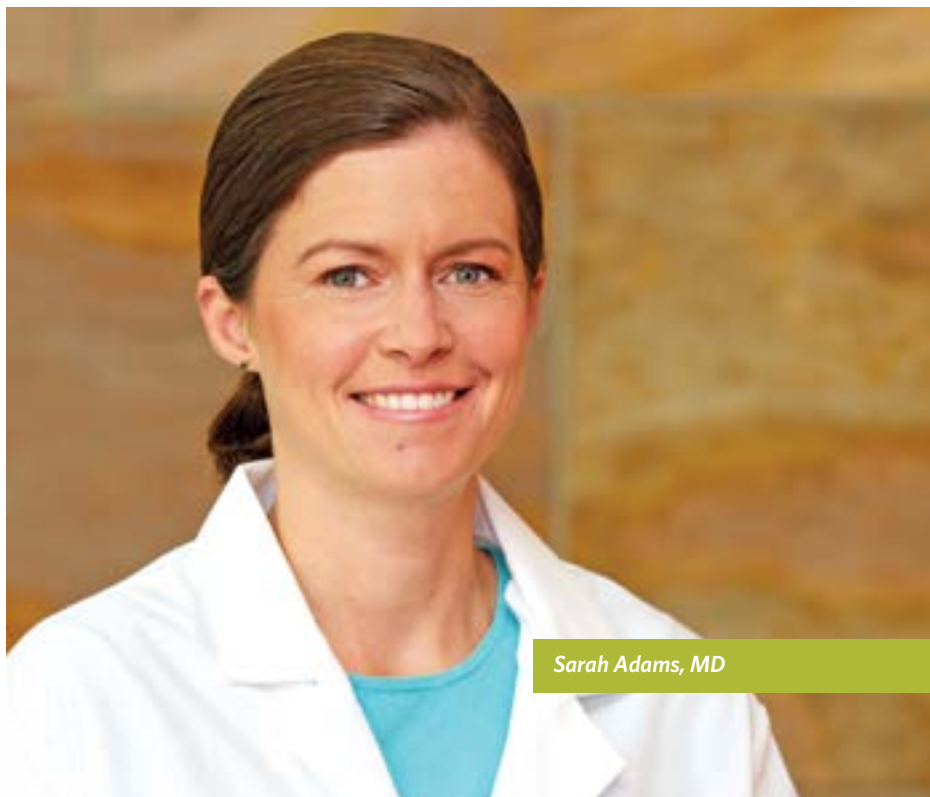
— Cheryl Willman, MD, Director & CEO,  
UNM Comprehensive Cancer Center

first national clinical trial opened in the Oncology Research Information Exchange Network, a consortium of 16 National Cancer Institute-designated cancer centers, and it is now open at three additional sites in Virginia, Ohio and Florida.

Ovarian cancer has unclear symptoms and no screening tests that catch it in its early stages, before it has spread to lymph nodes or other organs. When caught early, the five-year relative survival rate runs

higher than 90 percent, according to the National Institutes of Health. But in nearly 60 percent of women diagnosed, the cancer has already metastasized.

Although ovarian cancer can be treated with chemotherapy and surgery, in a majority of women the cancer eventually returns, resulting in the poor overall survival rate. Adams' new treatment is being tested in women with recurrent ovarian cancer after chemotherapy.



Sarah Adams, MD

Her early studies demonstrated the efficacy of combining two treatment approaches. First, a tumor-directed therapy kills cancer cells, while a complementary immunotherapy method sensitizes immune system T-cells to target ovarian cancer cells.

Adams has focused her research on BRCA-related ovarian cancer. BRCA1 and BRCA2 are genes we all carry that encode proteins involved in DNA repair, but women with mutations in their BRCA genes face a high risk of breast and ovarian cancer.

Cells with mutated BRCA genes rely on alternate DNA-repair pathways that use a class of proteins called PARPs. Adams' therapy uses a PARP inhibitor that kills the cancer cells by keeping



the PARP proteins from accomplishing their repair work. PARP inhibitors do not affect healthy cells because they have working BRCA proteins with which to repair their DNA. “The therapy is specific to cancer cells,” Adams says, “so it’s nicely targeted.”

Meanwhile, Adams and others have shown that immune therapy is especially potent against BRCA-related ovarian cancer. It enhances a woman’s immune response to her cancer and teaches her immune cells to recognize the cancer if it ever comes back. The immune therapy in Adams’ trial is an antibody that sustains T-cells’ ability to recognize and devour cancer cells.

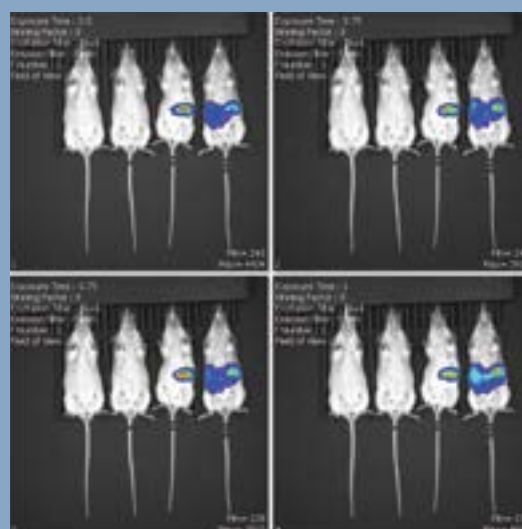
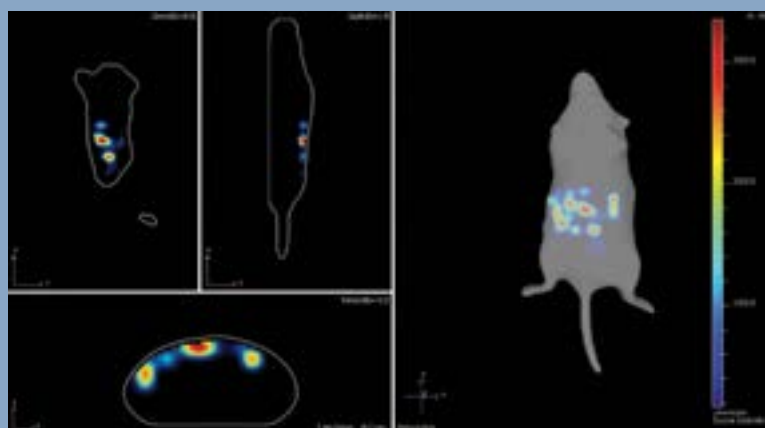
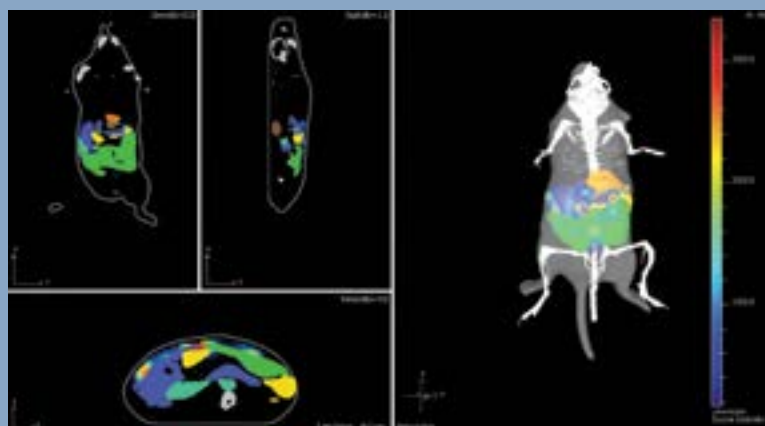
So Adams’ combination therapy kills cancer cells and enables the immune system to eradicate the tumor: if the PARP inhibitor doesn’t kill the tumor cells outright, the immune system does.

With continued promising results, NRG, one of the NCI Cooperative Oncology Groups that runs national clinical trials, has also selected Adams’ trial to be opened across the nation and to expand this therapy to women without BRCA-related mutations.

Cheryl Willman, MD, director and CEO of the UNM Comprehensive Cancer Center, hailed Adams for translating her discovery science into a clinical trial first tested at UNM, and then expanded to national clinical trials.

“This is considered one of the highest, and most difficult, achievements that any cancer investigator or cancer center can attain,” Willman says.

Ultimately, Adams and her team hope to boost the immune system of women with ovarian cancer so that their bodies keep the cancer at bay once the tumor is removed or killed. “I’ve never been this excited about research before,” Adams says. “These results have been really exciting.” ■



*Adams tested her cancer-killing therapy in a mouse model before launching human clinical trials.*



## Advancing Behavioral Health Through Evidence, Engagement and Equity

By Tamara L. Young

**T**he Transdisciplinary Research, Equity and Engagement (TREE) Center is an innovative hub of diverse scholars from across UNM. It engages with community partners to grow evidence-based interventions that tackle the root causes of behavioral health issues, including youth suicide, depression and anxiety, opioid addictions, adverse childhood experiences and alcoholism.

“We are closing the health disparities ‘know-do’ gap by generating both community and academic evidence for actions at the individual, family, community, systems and policy levels,” explains Lisa Cacari Stone, PhD,

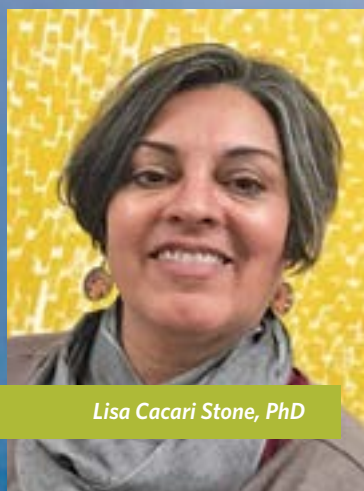
director and associate professor in the College of Population Health. “We aspire to impact change by investing in the next generation of under-represented minority scholars.”

Cacari Stone has spent the better part of the past two decades working in health and social services across the country. Along the way, she found significant gaps in policies and services, particularly those aimed at underserved populations.

She attributed these gaps to the fact that many research consultants have little or no understanding of the cultural and social determinants of health in the populations they study – and was motivated to get a PhD in social policy.

The TREE Center is one of 12 National Institutes on Minority Health and Health Disparities Specialized Centers of Excellence on Minority Health and Health Disparities. It received \$7 million in grant funding over five years to promote research aimed at improving behavioral health outcomes for racial, ethnic, sexual, gender and geographic minority communities. It also seeks to support the development of a diverse scientific workforce by training new under-represented minority investigators.

The TREE Center boasts three complementary cores, two center-led research projects, young investigator-led pilot projects and a data and evaluation unit.



Lisa Cacari Stone, PhD





“The Community, Scientific, Policy Advisory Committee plays an important role in strengthening our work by offering strategic guidance, helping us evaluate our progress and identifying community research projects and assisting in translating and co-disseminating evidence to practice and policy,” Cacari Stone explains.

The Community Engagement and Dissemination Core, co-directed by Lorenda Belone, PhD, MPH, and Magdalena Avila, DrPH, associate professors in the College of Education, is building an infrastructure throughout New Mexico to disseminate evidence-based science.

The Investigator Development Core, co-directed by Matthew Borrego, PhD, associate professor in the College of Pharmacy, and Theresa Cruz, PhD, research associate professor in the Department of Pediatrics, oversees a pilot grant program to mentor early-stage investigators in conducting multi-level team research with community partners.

Pilot grants are being awarded each year through 2022 to competitive early stage investigators. In the TREE Center’s first two years, seven pilot grants were awarded for research addressing New Mexico’s Dreamers, Albuquerque Public Schools, fracking in Diné communities, suicide risk in rural communities, Generation Justice, teen pregnancy and maternal health in substance abuse contexts.

Thomas Chavez, PhD, assistant professor in the College of Education, says that in addition to provide financial support and mentorship, “The TREE Center has given me the confidence to broach topics from critical lenses that make a difference in our communities.”

The TREE Center also has research projects that address the social determinants of behavioral health outcomes in two communities. These studies function as place-based World Health Organization-style observatories for testing

behavioral interventions and growing knowledge that can be used by other community-academic partnerships.

Integrating Intergenerational Cultural Knowledge Exchange with Zero Suicide is a study at San Felipe Pueblo that leverages cultural knowledge and language to help immunize against the risk of teen suicide. The Immigrant Well-Being Project works with three community organizations to address mental health, education and legal and civil rights issues among Mexican immigrants.

Looking ahead, Cacari Stone, trusts that the TREE Center will be a model in the nation for growing the people, partnerships and collective knowledge for advancing social change and health equity.

“Together, we are stronger,” she says, “and our TREE leadership is capable of overcoming disciplinary silos and transforming the way we do research with communities so that our collective knowledge advances social change.” ■







## Beth Tigges Helps HSC Researchers Meet Their Grant Objectives

By Michael Haederle

**E**ach year, as tens of millions of dollars in extramural grants flow into The University of New Mexico's Clinical & Translational Science Center to support a complex research portfolio, someone has to ensure that the work product meets the objectives set forth by the funders.

That someone is Beth Tigges, PhD, RN, PNP, BC, an associate professor and Regents' Professor in the College of Nursing, who for the past 10 years has served as the CTSC's director of evaluation. In that role, she is deeply involved in the process of applying for the 2020 renewal of the Clinical and Translation Science Award that funds the CTSC.

"This will be my third round," says Tigges, who helped draft UNM's original CTSA grant, which was awarded in 2010. "It's easier, because it's more familiar, but we always need to think of new directions, new things to do."

Tigges always wanted to be a nurse. She earned her bachelor's degree in nursing at Penn State, a master's in nursing as a pediatric nurse practitioner at Yale, and a PhD in public health and social psychology at Columbia. She moved to New Mexico in 1989 when her physicist husband took a job at Sandia National Laboratories.

At the time, the UNM College of Nursing needed faculty to start up a nurse practitioner program. "I helped develop that curriculum, and also the curriculum for the nurse midwifery program when it started in 1991," she says.

Tigges has been active throughout her career in promoting nursing excellence. She is the 2017-2019 president of the Sigma Theta Tau International Honor Society of Nursing, which has more than 135,000 active members in more than 90 countries and territories around the world.

But she left behind her clinical education duties about 15 years ago and joined the PhD teaching faculty when the College launched its research doctorate program.

Tigges grew acquainted with multi-disciplinary research after a colleague asked her to help submit a grant to create a UNM center for the National Children's Study funded through the National Institutes of Health. "I discovered that I really enjoyed working on these multi-disciplinary collaborative research programs," Tigges says.

Not long after, she helped another colleague write a RO1 research grant proposal, which is why she was recommended to Executive Vice Chancellor Richard S. Larson when he needed someone to write a 25-page evaluation section for the first CTSA grant – and do it in a few weeks.

"I wrote an evaluation plan for it," she says. "It went really well and we

got funded, so it was almost an accident that I went into evaluation."

In her role at the CTSC, Tigges has evaluated research for a number of different programs at the UNM Health Sciences Center and for the Mountain West Research Consortium, a federally funded collaboration to develop clinical and translational research capacity among 11 institutions in seven Western states.

"There's been a fairly large shift in the past 10 years in the paradigm of research that NIH is interested in," Tigges says, adding that there's now greater emphasis on team-based work conducted at a number of different universities. "If you do collaborative work, you often come out with results that are more generalizable because you've pulled in more institutions."

The evaluation process helps the NIH determine whether researchers are producing the scientific results it is seeking, she says. "Are we producing the publications, the follow-up grants, the patents – are we doing better at producing those than we used to do? Are we producing changes in clinical practice or health policy relatively quickly? Are we having an impact?"

A properly constructed evaluation provides a feedback loop that helps researchers do their jobs better. "You develop processes and strategies to reach the outcomes they want," she says. "You have to approach it from multiple different perspectives." ■







## Navajo Nation Residents Live With Uranium Mining's Legacy

By Kara Leasure Shanley

Sitting by itself in the Arizona desert, a mobile lab has been set up to examine the air quality of the surrounding environment. Air is collected, condensed and later pumped into the cages of rodents in the lab to see how it affects them.

If this sounds like the opening scene from a science fiction movie, you're not alone.

"Have you seen *The Martian*?" asks Matthew Campen, PhD. "I liken it to that." Unlike Matt Damon's lone, stranded astronaut, however, Campen has an entire team by his side investigating how residents of the Navajo Nation are affected by radioactive dust exposure from abandoned uranium mines.

Hundreds of thousands of Navajo live close by the more than 500 mines dotting their land, breathing elevated levels of contamination in the air every day, which can have severe effects on the lungs and heart.

This research is the focal point of one of the three grants from the National Institutes of Health in which Campen, a professor in the Department of Pharmaceutical Sciences, is the project leader. He and collaborators also study the widespread consequences of inhaling other toxins – like fume particulates and nanomaterials – on the lungs, heart and brain.

Campen admits it is challenging to balance three grants that seem out-

wardly unrelated, but all three are connected by a single concern. "It's just such a simple question: why is it that we breathe stuff in and you have these systemic health effects?" he says. "It gives me a lot of room to do unfocused things."

The intellectual freedom from following this question allows him to concentrate on what he thinks is a vital part of research – conducting the experiments that make a difference.

As a graduate student in North Carolina, he provided pivotal answers about the connection between particulate exposure and cardiac issues in rats. Campen says it was more a matter of being in the right place at the right time – with a little foreshadowing. "Darned if that hasn't become the rest of my life," he says.

Campen's recent work mirrors his philosophy on funded science. Most projects can be represented by three overlapping circles: work that can be done, work that the scientist wants to do and work that is needed.

"Somewhere in the overlap is the hot spot," Campen says. Pursuing that overlap has been his primary goal, especially when it comes to his work with the Navajo Nation, conducted in partnership with the UNM METALS Superfund Research Program led by Johnnie Lewis, PhD, research professor in the College of Pharmacy.

"For the mine sites, the question has really been with the communities," he explains. "What are your



Matthew Campen, PhD

concerns related to the mine sites, and how can I help?"

Though cautious about whether his work will yield any novel treatments for particulate exposure, Campen is optimistic about its impact. "What I hope is that by understanding the molecular pathways better, we're better able to recognize people that'll be at risk," he says.

Campen's enthusiasm for his research helps him keep things in perspective – especially following a long day in the field, far away from home.

"It was brilliant, because there you are," he says, recalling the Navajo Nation study. "You've wrapped up the day, you've got nothing to do but sit there and you've got stars. You could go for a hike. The biking up there was fantastic."

Between "geeking out" about other UNM researchers' innovative projects and coming up with new ways to pursue his own, Campen's curiosity will continue to drive him toward answering questions that matter. ■







## Training Grants 2018



**Camden Bair, PhD Candidate**

T32 Scholar, NIH

*Elucidation of function of the human adenovirus type 4 early region 3 CR1 proteins*  
Mentor: Adriana Kajon, PhD



**Janie Rae Byrum, PhD Candidate**

T32 Scholar, NIAID

*T cell immunology, particularly motility of T cells in lymph nodes and the molecular and structural factors that facilitate target cell identification*  
Mentor: Judy Cannon, PhD



**Neil Detweiler, PhD**

K12 Scholar, NIH

*Vascular physiology*  
Mentors: Nikki Jernigan, PhD; Terri L. Koontz



**Daniel Barto, PhD**

K12 Scholar, NIH

*Computational psychiatry; Neural markers of psychological disorders; Developmental neurobiology*  
Mentor: Elaine Bearer, MD, PhD



**Laura Weise Cross, PhD**

T32 Scholar, NIH

*Oxidant signaling in pulmonary hypertension*  
Mentor: Thomas Resta, PhD



**Tracy Dohn, PhD**

K12 Scholar, NIH

*The study of how different muscle types with different structures and functions are developed and regulated*  
Mentor: Richard Cripps, DPhil



**Roger Brown, PhD**

T32 Scholar, NIAID

*Developing bioinformatics methods for studying RNA processing events in cellular differentiation of the immune system*  
Mentor: Scott Ness, PhD



**Sharina Desai, PhD**

T32 Scholar NIAID

*T cell trafficking during ovarian cancer disease progression in the peritoneal tumor environment*  
Mentor: Sarah Adams, MD



**Tammi Duncan, PhD**

K12 Scholar, NIH

*The potential role of zinc as a way to attenuate the carcinogenic effects of environmental metals on DNA repair mechanisms*  
Mentor: Laurie Hudson, PhD





**Selina Garcia, PhD Candidate**

T32 Scholar, NIH

*Regulation of endothelial function by acid-sensing ion channel 1*

Mentor: Nikki L. Jernigan, PhD



**Johnny A. Kenton, PhD Candidate**

T32 Scholar, NIAAA

*Using optogenetics to explore neuronal circuits underlying executive dysfunction as a result of moderate prenatal alcohol exposure*

Mentors: Jonathan L. Brigman, MD; C. Fernando Valenzuela, MD, PhD; Lee Anna Cunningham, PhD; Benjamin J. Clark, PhD



**Perenkita Mendiola, PhD Candidate**

T32 Scholar, NIH

*Identification of endogenous regulators of cystathione gamma-lyase in endothelial cells*

Mentor: Nancy Kanagy, PhD



**Ryan E. Harvey, PhD Candidate**

T32 Scholar, NIAAA

*Understanding the impact of prenatal alcohol exposure on hippocampal-parahippocampal place, grid, and head direction signals*

Mentor: Benjamin Clark, PhD



**Adrian Luna, PhD Candidate**

T 32 Scholar, NIAID

*Defining how HPV oncogenes are regulated during a productive infection and the cause of deregulation during transformation*

Mentors: Michelle A. Ozbun, PhD; Gregory Gan, MD, PhD; Jennifer Gillette, PhD; Laurie Hudson, PhD



**Dominique Perez, PhD Candidate**

T32 Scholar, NIH

*Utility of small molecule inhibitors of cAMP efflux for translation as leukemia therapeutics*

Mentors: Larry Sklar, PhD; Alexandre Chigaev, PhD



**Stephanie Jerman, PhD**

K12 Scholar, NIH

*Immune Cell Phenotype in the Tumor Microenvironment*

Mentor: Ellen Beswick, PhD



**Naomi Lee, PhD**

K12 Scholar, NIH

*Developing novel peptide and virus-like particle-based vaccines using chemical biology and molecular genetics*

Mentors: Bryce Chackerian, PhD; Ann Jerse, PhD; Jason Umans, MD, PhD



**John Pinner, PhD Candidate**

T32 Scholar, NIH

*Studying the relationships between brain function, brain structure, and behavior in children with FASD*

Mentor: James F. Cavanagh, PhD

**Katelyn Reinhart, PhD Candidate**

T32 Scholar, NIH

*Study of spreading depolarization (SD), and the basic physiological mechanisms of SD that contribute to the progression of brain injuries, including stroke*

Mentor: C. William Shuttleworth, PhD

**Tess Shideler, PhD**

K12 Scholar, NIH

*Endosomal transport of EGFR*

Mentor: Angela Wandinger-Ness, PhD

**Christine Woods, PhD**

K12 Scholar, NIH

*Examining the contribution(s) of GPER in metabolic homeostasis and determining its therapeutic potential on adiposity and metabolic dysfunction*

Mentor: Eric Prossnitz, PhD

**Chelsea Saito-Reis, PhD Candidate**

T32 Scholar, NIH

*Role of CD82 in regulating hematopoietic stem cell adhesion and signaling*

Mentor: Jennifer Gillette, PhD

**Crystal Vander Zanden, PhD**

K12 Scholar, NIH

*Early aggregation events of amyloid beta in Alzheimer's disease*

Mentor: Eva Chi, PhD

**Sheldwin A. Yazzie, PhD**

K12 Scholar, NIH

*Improving the health of all communities with a focus on disparate environmental exposures and disease rates among disadvantaged populations, specifically on American Indian/Alaska Native populations*

Mentors: Charles Wiggins, PhD; Kevin English, DrPH

**Lea Weston, PhD Candidate**

T32 Scholar, NIAID

*Determining the role of anti-inflammatory cytokine IL-10 in tauopathies such as Alzheimer's disease*

Mentor: Kiran Bhaskar, PhD

**Joshua Sanchez, PhD Candidate**

T32 Scholar, NIAAA

*Neuroscience and FASD*

Mentor: Erin Milligan, PhD

**Elani Fourie Wiest, PhD**

T32 Scholar, NIH

*Studying the use of serum hydrogen sulfide as a biomarker to identify diabetic subjects at risk for cardiovascular complication*

Mentor: Nancy Kanagy, PhD

**Katherine Zychowski, PhD**

K12 Scholar, NIH

*Vascular and neurovascular toxicology*

Mentors: Matthew Campen, PhD; Melissa Franklin, MA



## Excellence in Research Awards 2018

**T**he UNM Health Science Center's 10th Annual Research Day Awards Ceremony was held November 16, 2018. Six scientists nominated by their peers were selected for recognition by a faculty committee on the basis of their outstanding research contributions.

*Awards winners (L-R) Andrew Sussman, Alberta Kong, Beth Moody Jones, Lauren Jantzie and Sarah Adams.*





---

**C. Fernando Valenzuela, MD, PhD**  
**Neurosciences**  
**Basic Science Research**

During his career at UNM Fernando Valenzuela has recorded an impressive string of “firsts” in his study of how ethanol exposure affects brains – especially those of developing fetuses. He discovered novel effects of alcohol on glutamatergic transmission and synaptic plasticity in the central nervous system. He was also the first to report that neurosteroids modulate developing neuronal circuits involved in the pathophysiology of Fetal Alcohol Spectrum Disorders. And, he has shown that ethanol stimulates neuronal networks, and has profound effects on the normal maturation of hippocampal circuits, which can lead to cognitive deficits. He serves as scientific director for the New Mexico Alcohol Research Center and previously directed the MD/PhD program in the School of Medicine.



*C. Fernando Valenzuela, MD, PhD*



**Sarah F. Adams, MD**  
**Obstetrics & Gynecology**  
**Clinical Science Research**

Ovarian cancer is difficult to detect and treat, but Sarah Adams’ landmark work in cancer immunology and immunotherapeutics could prove to be a game-changer for this devastating disease. While studying immune modulators in germline BRCA1-mutated ovarian cancer using pre-clinical animal models of ovarian cancer, she uncovered a significant enhancement in synthetic lethality of PARP inhibition with CTLA-4 immune modulation. Her mouse models provided scientific justification for a Phase I/II clinical trial at UNM of the PARP inhibitor Olaparib and tremelimumab (anti-CTLA4) in patients with germline BRCA-mutated ovarian cancers. This is the first-ever multi-center national cancer clinical trial led by UNM and the first clinical trial selected by the members of the ORIEN Cancer Precision Medicine network.

**Alberta Sum-Yu Kong, MD, MPH**  
**Pediatrics**  
**Population Science Research**

Alberta Kong’s quest to devise successful interventions to alleviate the burden of pediatric obesity has led her to partner with public schools around New Mexico. As a KL2 scholar in the Clinical & Translational Science Center, she used community-based participatory research principles to implement a culturally sensitive and age-appropriate obesity intervention in two school-based health centers. Students who received the intervention had significantly greater pre-post improvements in body mass index and waist circumference, as compared with the standard care group. That led to a \$3.5 million RO1 study that expanded her research to include more than 900 students from eight high schools in three different New Mexico school districts. Preliminary results show significant improvements in quality of life among students receiving the intervention.



**Lauren L. C. Jantzie, PhD**  
**Pediatrics**  
**Junior Faculty**

In her five years at UNM, Lauren Jantzie has made her mark as an innovative researcher in the field of perinatal, neonatal and pediatric brain injury. She began her career investigating neuro-inflammation and the protective effects of microglial inhibitors in perinatal hypoxia-ischemia. She was the first to publish research on the protective effects of doxycycline. She also defined the roles of chloride co-transporters (NKCC1 and KCC2) in developing therapies to treat the encephalopathy of prematurity. And, she has investigated the excitatory pathways in normal and abnormal brain development, demonstrating in both human and rodent models that the balance between excitation and inhibition is central to normal neurodevelopment and is dysregulated following prenatal injury.



**Andrew L. Sussman, PhD, MCRP**  
**Family & Community Medicine**  
**Team Science Research**

Andrew Sussman has made a practice out of finding the most effective ways to promote team science – and has made invaluable contributions to UNM Health Sciences Center research as a result. He holds multiple positions across the HSC and Main Campus based on his ability to transcend disciplinary boundaries. These include serving as director of RIOS Net (Research Involving Outpatient Settings) Practice-Based Research Network, director of Behavioral Measurement and Population Science Shared Resource in the Cancer Control Program at the UNM Comprehensive Cancer Center, faculty appointment in the Department of Family & Community Medicine, with a secondary appointment in the Department of Obstetrics & Gynecology, and senior fellow at the Robert Wood Johnson Foundation Center for Health Policy.

**Beth Moody Jones, PT, DPT, EdD, MS, OCS**  
**Physical Therapy**  
**Scholarship of Teaching and Learning**

What's the best way to prepare physical therapy students for their national board exams? Beth Moody Jones made that question the central focus of her doctoral research – and her findings have translated into new teaching strategies and improved first-time pass rates for students graduating from UNM's PT program. Her research, which looked at six cohorts from 2012-2017, inquired into the qualitative aspects of student success, how the program's culture and hidden curriculum influence student success, whether learning styles are stable over time, and what learning styles correlate to critical thinking and success on licensure exams. Her research provided a unique opportunity to study the impact of admission criteria, step exam implementation, grit and mindset across the cohorts. ■

Photographs by Jett Loe



# Contracts and Grants 2018



|                                                    |           |
|----------------------------------------------------|-----------|
| <b>Office of the Chancellor</b>                    | <b>28</b> |
| <b>Office of the Executive Vice Chancellor</b>     | <b>28</b> |
| Brain & Behavioral Health Institute                | 28        |
| Center for Infectious Disease & Immunity           | 28        |
| Memory & Aging Center                              | 28        |
| <b>Office of the Vice Chancellor for Research</b>  | <b>28</b> |
| Animal Research Facility                           | 28        |
| <b>Clinical &amp; Translational Science Center</b> | <b>29</b> |
| <b>College of Nursing</b>                          | <b>29</b> |
| <b>College of Pharmacy</b>                         | <b>29</b> |
| <b>College of Population Health</b>                | <b>31</b> |
| <b>School of Medicine</b>                          | <b>31</b> |
| Comprehensive Cancer Center                        | 31        |
| Anesthesiology                                     | 33        |
| Biochemistry & Molecular Biology                   | 33        |
| Cell Biology & Physiology                          | 34        |
| Dental Medicine                                    | 34        |
| ECHO Institute                                     | 34        |
| Emergency Medicine                                 | 35        |
| Family & Community Medicine                        | 36        |
| Internal Medicine                                  | 38        |
| Molecular Genetics & Microbiology                  | 40        |
| Neurology                                          | 41        |
| Neurosciences                                      | 42        |
| Neurosurgery                                       | 43        |
| Obstetrics & Gynecology                            | 43        |
| Office of the Medical Investigator                 | 44        |
| Orthopaedics                                       | 44        |
| Pathology                                          | 45        |
| Pediatrics                                         | 45        |
| Psychiatry & Behavioral Sciences                   | 49        |
| Radiology                                          | 50        |
| Surgery                                            | 50        |
| <b>UNM Hospital</b>                                | <b>50</b> |
| <b>UNM Sandoval Regional Medical Center</b>        | <b>51</b> |
| <b>UNM Medical Group, Inc.</b>                     | <b>51</b> |



## Office of the Chancellor

### Loretta Doyle

Albuquerque Healthcare for the Homeless Inc.

Professional Services \$25,000

Guadalupe County Hospital  
Professional Services \$25,000

Miners Colfax Medical Center  
Professional Services \$25,000

Taos County  
Professional Services \$25,000

### Robert Fritch

New Mexico Department of Health  
Locum Tenens Program Physician, PA  
and NP Services Project - BAA \$100,000

New Mexico Department of Health  
Locum Tenens Program Physician, PA  
and NP Services Turquoise Lodge \$10,000

### Sheila Hickey

Health Resources and Services  
Administration  
Scholarship for Disadvantaged  
Students - Continuation \$650,000

### Richard Larson

University of New Mexico Foundation  
Private Gifts for Research \$6,044,540

### Warren Laskey

U.S. Department of Veterans Affairs  
Task Order for Funding of the  
Extension \$430,857

### Rodney McNease

Albuquerque Health Services  
Opioid Treatments - Evergreen \$25,000

### Mark Pedrotty

Taos Clinic for Children and Youth  
Professional Services Via Telemedicine -  
Evergreen \$10,000

### Jennifer Phillips

First Choice Community Healthcare  
Professional Services Agreement \$50,000

### Aimee Smidt

American Medical Group, Inc.  
Tele-Dermatology Services -  
Evergreen \$15,000

### Steven (Bruce) Williams

Truman Health Services  
Provider Agreement - Evergreen \$25,000

Truman Health Services  
Provider Agreement - Evergreen \$25,000

Truman Health Services  
Pharmacy Services - Evergreen \$25,000

## Office of the Executive Vice Chancellor

### Richard Larson

Lovelace Respiratory Research Institute  
LRRI/BSGP Fellowship Agreement  
2017 \$16,858

Lovelace Respiratory Research Institute  
LRRI/BSGP Admin Support Agreement  
2017 \$4,737

## Brain & Behavioral Health Institute

### Bill Shuttleworth

New Mexico Governor's Commission  
on Disability  
Neuroscience Day 2018 \$5,000

## Center for Infectious Disease & Immunity

### Thomas Byrd

National Institute of Allergy and  
Infectious Diseases  
A Mouse Model of Mycobacterium  
Abscessus Lung Infection That Mimics  
Human Disease \$75,750

### Michelle Ozbun

National Institute of Allergy and  
Infectious Diseases  
Biology of Infectious Disease and  
Inflammation \$133,180

### Terry Wu

Sandia National Laboratories  
NanoCRISPR Grand Challenge  
Year 2 \$249,071

Defense Threat Reduction Agency  
Evaluation of Novel Subunit Tularemia  
Vaccines in Rat & Non-Human Primate  
Aerosol Infection Models - Non-Specific  
Supplement \$134,915

## Institute for Resilience, Health & Justice

### Richard Larson

New Mexico VA Health Care System  
Veterinary Services for the New  
Mexico Veterans Affairs Health  
Care System \$28,176

## Memory & Aging Center

### Gary Rosenberg

National Institute of Neurological  
Disorders and Stroke  
MRI and CSF Biomarkers of White Matter  
Injury in VCID \$1,064,133

Genentech, Inc.  
A Phase 3, Multicenter, Randomized, Double-  
Blind, Placebo-Controlled, Parallel-Group,  
Efficacy and Safety Study of Crenezumab in  
Patients With Prodromal to Mild Alzheimer's  
Disease \$662,835

National Institute of Neurological  
Disorders and Stroke  
White Matter Hypoxia in Novel Model  
of MMP-Mediated Inflammation  
SHR/SP \$331,406



## Office of the Vice Chancellor for Research

### Richard Larson

Harvard University  
SMART IRB Ambassador -  
Continuation \$11,869

Lovelace Respiratory Research Institute  
LRRI/BSGP Fellowship Agreement  
2017 \$16,858

Lovelace Respiratory Research Institute  
LRRI/BSGP Admin Support Agreement  
2017 \$4,737

## Animal Research Facility

### Richard Larson

New Mexico VA Health Care System  
Veterinary Services for the New Mexico  
Veterans Affairs Health Care  
System \$28,176

## Clinical & Translational Science Center

### Matthew Campen

National Center for Advancing Translational Sciences  
UNM Clinical and Translational Science Center KL2 - Year 4 \$331,150

### Darrell Dinwiddie

University of Arkansas  
Molecular Epidemiology and Transmission \$24,500  
University of Utah  
University of Utah Center for Clinical and Translational Science - Continuation \$23,594

### Janell Fuller

University of Arkansas  
Phase 3 Advancing Clinical Trials in Neonatal Opioid Withdrawal Syndrome Data Collection Study: Infant Exposure and Treatment \$19,600

### Alberta Kong

National Heart, Lung, and Blood Institute  
ACTION PAC: Adolescents Committed to Improvement of Nutrition & Physical Activity \$747,184

### Richard Larson

National Center for Advancing Translational Sciences  
UNM Clinical and Translational Science Center UL1 - Year 4 \$3,750,798

National Center for Advancing Translational Sciences  
UNM Clinical and Translational Science Center UL1 \$381,422

University of Nevada, Las Vegas  
Clinical and Translational Research Infrastructure Program - CRDEB KCA \$282,161

University of Pittsburgh  
NCATS Accrual to Clinical Trials Project \$113,625

University of Nevada, Las Vegas  
Clinical and Translational Research Infrastructure Program - CREMCaD KCA \$106,549

University of Nevada, Las Vegas  
Clinical and Translational Research Infrastructure Program-Admin KCA \$14,297

### Hengameh Raissy

Duke University  
Pharmacokinetics of Understudied Drugs Administered to Children Per Standard of Care \$30,000

### Bill Shuttleworth

Sandia National Laboratories  
Sandia Project - Pin Yang EPR \$5,000

## College of Nursing

### Jane Chung

University of California, Davis  
Sensor-Based Mobility Assessment of Older Latinos With Dementia \$14,000

### Kim Cox

Jonas Center for Nursing Excellence  
Jonas Veterans Healthcare Scholars \$10,000  
American Psychiatric Nurses Association  
Exploring Perspectives of Medication-Assisted Therapy \$3,927

### Gloria Dixon

University of Colorado Denver  
CO-APEX Collaborative Advanced Psychiatric Education Exchange \$195,916

### Amy Levi

Anonymous Sponsor  
Creating a Unified Sexual and Reproductive Health Nursing Organization \$62,439

### Judy Liesveld

Indian Health Service  
Success in Nursing for Native Americans Through Collaboration - Continuation \$337,225

New Mexico Board of Nursing  
New Mexico Nursing Education Statewide Planning \$13,575

### Janice Martin

City of Albuquerque  
Geriatric Education & Health Maintenance Clinic - BAA \$67,000

First Nations Community Healthsource, Inc.  
First Nations Community Healthsource, Inc. \$62,403

El Centro Family Health  
El Centro Family Health-Heidi Rogers \$59,721

Mountain Spirit Integrative Medicine  
Mountain Spirit - Heidi Rogers \$59,720

Presbyterian Healthcare Services  
Presbyterian Healthcare Services FY18 \$31,363

### Carolyn Montoya

Bureau of Health Workforce  
Advancing Nursing Education Workforce - Continuation \$473,970

Bureau of Health Workforce  
UNM College of Nursing ANEW Project - Non-Specific Supplement \$105,391

### Mark Parshall

Bureau of Health Resources Development  
Nurse Faculty Loan Program \$95,536

### Sharon Ruyak

Trailhead Institute  
ACA - A Journey to Empowerment and Health: Building the New Mexico Perinatal Mental Health Improvement Network \$41,138

## College of Pharmacy

### Joe Anderson

New Mexico Department of Health  
BAA/Heart Disease and Stroke Prevention Program Health Systems Intervention Project \$52,660

New Mexico Department of Health  
BAA/Heart Disease and Stroke Prevention Program Health Systems Intervention Project \$28,395

New Mexico Pharmacist Association  
A1-New Mexico Pharmacist Association Continuing Education Course "Physical Assessment for the Pharmacist Clinician" \$4,739

### Ludmila Bakhireva

National Institutes of Health  
Epigenetic Markers for Neonatal Abstinence Syndrome: Mechanistic Insights From an Established Birth Cohort \$237,949

University of California, San Diego  
Organization of Teratology Information Specialists Research Network \$12,800

### Barry Bleske

Bristol-Myers Squibb  
Pharmacy-Based Population Health Model for the Detection of Silent Atrial Fibrillation \$125,822

University of Michigan  
Genetic Determinants of ACEI Prodrug Activation \$26,246



**Scott Burchiel**

Columbia University  
*Arsenic Exposure, Impaired Respiratory Function, and Immunosuppression - Continuation* \$197,384

**Matthew Campen**

National Institutes of Health  
*Enhancement of Coronary Constriction by Volatile Organic Air Toxics* \$703,325

National Institutes of Health  
*Inhalation of Contaminated Mine Waste Dusts As a Route for Systemic Metal Toxicity* \$494,241

National Institutes of Environmental Health Sciences  
*Neurovascular Consequences of Inhaled Uranium Mine-Site Dust Exposure* \$86,400

**Dawn Delfin**

American Heart Association  
*ABI3BP in the Heart: a Modulator of Cardiac Stem Cell Adhesion and Differentiation* \$154,000

**Melanie Dodd**

First Choice Community Healthcare  
*Pharmacist Consultant Agreement - Continuation* \$177,280

**Linda Felton**

U.S. Department of Veterans Affairs  
*Formulation and Batch Records for the VA Medical Center in Albuquerque, N.M. - Continuation* \$35,942

**Larry Georgopoulos**

New Mexico Office of Superintendent of Insurance  
*OSI Formulary Filings Review* \$130,000  
 First Nations Community Healthsource, Inc.  
*First Nations Community Healthsource, Inc.* \$25,525

Cardiac Care Consultants of New Mexico  
*Professional Services Agreement - Cardiac Care Consultants* \$25,000

Prime Therapeutics  
*Pharmacy Participation Agreement* \$25,000

**Donald Godwin**

Health Resources and Services Administration  
*Health Professional Student Loan - Continuation* \$22,077

**Pamela Hall**

National Institutes of Health  
*Inducing Immune Control of Bacterial Virulence Regulation* \$186,577

National Institutes of Health  
*Sex-Dependent Phagocyte Clearance of Staphylococcus Aureus* \$186,028

**Laurie Hudson**

National Institutes of Health  
*Zinc Chemoprevention of Arsenic Co-Carcinogenesis* \$314,363

University of Oklahoma  
*Targeting G-CSF Receptor and Tumor-Associated Neutrophils in Colon Cancer* \$18,418

University of Oklahoma  
*Targeting G-CSF Receptor and Tumor-Associated Neutrophils in Colon Cancer* \$14,489

**Johnnye Lewis**

National Institutes of Health  
*Understanding Risk Gradients From Environment on Native American Children* \$3,641,961

National Institutes of Environmental Health Sciences  
*UNM Metal Exposure Toxicity Assessment on Tribal Lands in the Southwest Superfund Research Program* \$1,297,378

National Institutes of Environmental Health Sciences  
*UNM Metal Exposure Toxicity Assessment on Tribal Lands in the Southwest Superfund Research Program* \$1,287,660

Centers for Disease Control and Prevention  
*A Prospective Birth Cohort Study Involving Uranium Exposure in the Navajo Nation - Continuation* \$1,000,000

National Institutes of Environmental Health Sciences  
*Center for Native American Environmental Health Equity Research - Continuation* \$719,655

University of Montana  
*Wood Stove Interventions and Child Respiratory Infections in Rural Communities - Continuation* \$158,010

Duke University  
*Attentional Mechanisms Underlying of Information Processing in a Sample of Navajo Children* \$99,784

**Jim Liu**

National Institutes of Health  
*Arsenic, GATA-1 and Hematotoxicity* \$340,875

University of Louisville  
*Particulate Cr(VI) Toxicology in Human Lung Epithelial Cells and Fibroblasts* \$43,767

National Institutes of Health  
*The 10th Conference on Metal Toxicity and Carcinogenesis* \$8,000

**Debra MacKenzie**

Duke University  
*Using Silicone Wristbands as Non-Invasive, Passive, Environmental Monitors to Evaluate Seasonal and Within-Family Correlation for Environmental Exposures* \$4,242

**Renee-Claude Mercier**

New Mexico Department of Health  
*Antimicrobial Stewardship Project* \$33,496

**Jay Simon**

ABQ Health Partners, LLC  
*ABQ Health Partners - Radiopharmaceutical Goods and Services* \$90,000

New Mexico Heart Institute  
*Radiopharmaceutical Goods and Services* \$75,000

Sandia National Laboratories  
*SNL Isotopes Request - Continuation* \$4,375



**Susan Smolinske**

Health Resources and Services  
Administration  
*Poison Control Stabilization and Enhancement  
Program - Continuation* \$111,293

Denver Health and Hospital Authority  
*Researched Abuse, Diversion and  
Addiction-Related Surveillance System  
Work Order #10* \$17,185

Denver Health and Hospital Authority  
*Researched Abuse, Diversion and Addiction-  
Related Surveillance System Work Order #11  
- Continuation* \$1,562

**Mikiko Takeda**

UCB Pharma, Inc.  
*UCB Inc. HCP Consulting Agreement -  
Epilepsy* \$3,300

**Traci White**

Memorial Medical Center  
*Pharmacist Clinician for Inpatient  
Consult Team* \$41,600

Mesilla Valley Hospice  
*Mesilla Valley Hospice Pharmacist  
Clinician Services Agreement* \$39,394

## ■ College of Population Health

**William Athas**

New Mexico Department of Health  
*Birth Data Geocoding* \$44,837

New Mexico Department of Health  
*Birth Data Geocoding - Specific  
Supplement* \$10,000

**Lisa Cacari Stone**

National Institute on Minority Health  
and Health Disparities  
*TREE Center for Advancing Behavioral  
Health* \$1,433,258

National Institute on Minority Health  
and Health Disparities  
*Transdisciplinary Research, Equity and  
Engagement Center for Advancing Behavioral  
Health - TREE FY19* \$1,419,111

**Alexis Handal**

National Institutes of Environmental  
Health Sciences  
*Maternal Ethylenethiourea Levels,  
Newborn Thyroid Function and  
Infant Development* \$518,841

**Rebecca Rae**

Santa Clara Pueblo  
*Kha'po Owingeh RezRIDERS  
Project* \$150,000

**Francisco Soto Mas**

New Mexico Resiliency Alliance  
*Resiliency Index* \$14,000

**Kristine Tollestrup**

Health Resources and Services  
Administration  
*New Mexico MCH Public Health Training  
Institute* \$173,072

Tulane University  
*ACA- Region 6 Public Health Training  
Center* \$98,500

Health Resources and Services  
Administration  
*New Mexico MCH Public Health  
Training Institute - Non-Specific  
Supplement* \$92,737

Health Resources and Services  
Administration  
*New Mexico MCH Public Health Training  
Institute - Continuation* \$78,549

**Nina Wallerstein**

National Institutes of Health  
*Advancing CBPR Practice Through a  
Collective Reflection and Measurement  
Toolkit - Continuation* \$549,184

National Institutes of Health  
*Family Listening Program: Multi-Tribal  
Implementation and Evaluation* \$536,609

National Institutes of Health  
*Family Listening Program: Multi-Tribal  
Implementation and Evaluation Non-Specific  
Supplement Y05* \$59,624

## ■ School of Medicine

**Comprehensive Cancer Center****Sarah Adams**

Oxnard Foundation  
*Targeting DNA Repair Pathways  
to Sensitize Ovarian Tumors to Immune  
Therapy* \$20,000

**Cecilia Arana Yi**

New Mexico Cancer Care Alliance  
*Clinical Trial Open Label* \$100,695

New Mexico Cancer Care Alliance  
*Clinical Trial Phase 3* \$97,770

New Mexico Cancer Care Alliance  
*Clinical Trial Phase 2* \$96,320

**Marianne Berwick**

National Cancer Institute  
*Integration of Clinical and Molecular  
Biomarkers for Melanoma  
Survival* \$2,361,160

**Cynthia Blair**

National Cancer Institute  
*Improving Physical Functioning in Older  
Cancer Survivors Through Light-Intensity  
Physical Activity* \$154,707

**Ursa Brown-Glaberman**

New Mexico Cancer Care Alliance  
*Clinical Trial Phase 2* \$101,952

New Mexico Cancer Care Alliance  
*Clinical Trial Phase 3* \$100,040

New Mexico Cancer Care Alliance  
*Clinical Trial Phase 1* \$99,845

New Mexico Cancer Care Alliance  
*Clinical Trial Phase 1b/2* \$99,400

New Mexico Cancer Care Alliance  
*Clinical Trial Phase 3* \$96,200

New Mexico Cancer Care Alliance  
*Clinical Trial Phase 3* \$96,200

New Mexico Cancer Care Alliance  
*Clinical Trial Phase 1b/2* \$95,944

New Mexico Cancer Care Alliance  
*Clinical Trial Phase 1* \$95,940

**Jeremy Chien**

Army Medical Research Acquisition  
Activity  
*Exploiting ER Stress Pathway As a  
Target of Vulnerability in Ovarian  
Cancer* \$352,890

American Cancer Society  
*Mechanisms of Carboplatin Resistance  
in Ovarian Cancer* \$158,478

American Cancer Society  
*Inhibiting AXL Activation for Sensitizing  
Mesothelioma to Chemotherapy* \$57,500

American Cancer Society  
*Inhibiting AXL Activation for Sensitizing  
Mesothelioma to Chemotherapy - Non-  
Specific Supplement* \$5,000

**Vi Chiu**

New Mexico Cancer Care Alliance  
*Clinical Trial Phase 3* \$107,080





New Mexico Cancer Care Alliance  
Clinical Trial Phase 3 \$103,880

New Mexico Cancer Care Alliance  
Clinical Trial Phase 3 \$102,600

New Mexico Cancer Care Alliance  
Clinical Trial Phase 2/3 \$102,600

New Mexico Cancer Care Alliance  
Clinical Trial Phase 3 \$99,000

#### **Hua-Ying Fan**

National Institute of General Medical Sciences  
*Basis for Genotoxic Stress Relief by ATP-Dependent Chromatin Remodelers - Continuation* \$299,213

National Institute of General Medical Sciences  
*Basis for Genotoxic Stress Relief by ATP-Dependent Chromatin Remodelers* \$240,411

American Heart Association  
*Epigenetic Regulation of Notch Signaling* \$154,000

National Institute of General Medical Sciences  
*Basis for Genotoxic Stress Relief by ATP-Dependent Chromatin Remodelers - Non-Specific Supplement* \$63,518

#### **Matthew Fero**

University of Washington  
*Systems and Carcinogenic Impact Assessment of Topical Microbicides on Human Mucosa* \$200,410

New Mexico Cancer Care Alliance  
Clinical Trial Phase 2 \$111,515

#### **Stephanie Fine**

New Mexico Cancer Care Alliance  
Clinical Trial Phase 3 \$119,445

New Mexico Cancer Care Alliance  
Clinical Trial Phase 4 \$59,040

#### **Yan Guo**

Indiana University  
*LMO2 T-Cell Leukemia - Subaward - Guo* \$10,049

#### **Richard Harvey**

National Cancer Institute  
*Integration of Gene Expression Patterns, Fusions, Mutations, Cytogenetics and Other Clinical Variables for Subtyping Leukemias and Targeting Therapies* \$154,500

#### **Anita Kinney**

National Cancer Institute  
*Comparative Effectiveness of Interventions to Increase Guideline-based Genetic Counseling in Ethnically and Geographically Diverse Cancer Survivors* \$547,596

National Cancer Institute  
*Biobehavioral Effects of Qigong for Prostate Cancer Survivors With Fatigue* \$533,199

National Cancer Institute  
*GRACE - Non-Specific Supplement* \$60,844

Consulate of Mexico in Albuquerque  
*Ventanilla De Salud* \$36,979

Wake Forest University  
*A Stepped Care Telehealth Approach to Treat Distress in Rural Cancer Survivors* \$1,618

#### **Richard Lauer**

New Mexico Cancer Care Alliance  
Clinical Trial Phase 3 \$119,770

New Mexico Cancer Care Alliance  
Clinical Trial Phase 3 \$115,845

#### **Ben Liem**

New Mexico Cancer Care Alliance  
Clinical Trial Phase 3 \$100,680

#### **Elizabeth Lokich**

Women and Infants' Hospital of Rhode Island  
*Cancer of the Uterus and Treatment of Stress Urinary Incontinence* \$10,382

#### **Carolyn Muller**

National Cancer Institute  
*NCI Community Oncology Research Program Minority/Underserved Community Sites (UM1)* \$1,383,575

National Cancer Institute  
*NCI Community Oncology Research Program Minority/Underserved Community Sites (Early Onset Malignancies Initiative)* \$186,157

New Mexico Cancer Care Alliance  
Clinical Trial Phase 2 \$105,160

National Cancer Institute  
*NCI Community Oncology Research Program Minority/Underserved Community Sites (UM1) - Specific Supplement* \$78,750

#### **Scott Ness**

National Institutes of Health  
*Mutations and Target Genes ACC - Renewal* \$359,813

#### **Michelle Ozbun**

American Cancer Society  
*American Cancer Society Institutional Research Grant* \$270,000

#### **Renata Pasqualini**

National Institutes of Health  
*Targeting Lymphatic Vessels for Ligand-Directed Imaging* \$311,900

#### **Eric Prossnitz**

New Mexico State University  
*New Mexico State University New Mexico-INBRE UNM-Sub FY19 Continuation* \$543,740

National Cancer Institute  
*Molecular Mechanisms & Apps of ER/GPER Ligands* \$320,000

New Mexico State University  
*New Mexico IDeA Networks of Biomedical Research Excellence* \$164,718

New Mexico State University  
*New Mexico - Specific Supplement - Amendment #12* \$45,104

#### **Olivier Rixe**

New Mexico Cancer Care Alliance  
Clinical Trial Phase 1 \$105,280

New Mexico Cancer Care Alliance  
Clinical Trial Phase I \$101,339

New Mexico Cancer Care Alliance  
Clinical Trial Phase 1 \$101,275

New Mexico Cancer Care Alliance  
Clinical Trial Phase 2/3 \$100,890

New Mexico Cancer Care Alliance  
Clinical Trial Phase 1 \$100,635

New Mexico Cancer Care Alliance  
Clinical Trial Phase 1 \$98,715

#### **Teresa Rutledge**

New Mexico Cancer Care Alliance  
Clinical Trial Phase 3 \$100,059

**Larry Sklar**

Leidos, Inc.  
*NCI Experimental Therapeutics Chemical Biology Consortium* \$600,000

Leidos, Inc.  
*NCI Experimental Therapeutics Chemical Biology Consortium* \$300,000

Leidos, Inc.  
*NCI Experimental Therapeutics Chemical Biology Consortium* \$175,000

**Heloisa Soares**

Hirshberg Foundation for Pancreatic Cancer Research  
*Cross Talk Between PI3K/mTOR and MEK/ERK Pathways Mediating Drug Resistance in Pancreatic Cancer* \$33,280

Dana Farber Cancer Institute  
*Project 2: EL CENTRO: Engaging Latinos in the Center of Cancer Treatment Options* \$13,635

**Alan Tomkinson**

National Institutes of Environmental Health Sciences  
*Roles of Lig3 and XRCC1 Genes in Genome Stability - Continuation* \$307,800

National Institute of General Medical Sciences  
*Roles of DNA Ligase 1 in Mammalian DNA Metabolism* \$267,866

Lawrence Berkeley National Laboratory  
*Structural Cell Biology of DNA Repair Machines Project* \$66,660

**Charles Wiggins**

National Cancer Institute  
*Surveillance Epidemiology and End Results Program* \$2,484,230

New Mexico Department of Health  
*New Mexico BCC Surveillance Project 2018* \$6,330

**Cheryl Willman**

National Cancer Institute  
*UNM Cancer Center Support Grant* \$2,246,011

National Cancer Institute  
*UNM Cancer Center Support Grant - Tobacco Cessation Supplement* \$241,979

National Cancer Institute  
*Cancer Health Disparities Regional Training Network (GMAP)* \$241,885

Memorial Medical Center  
*Professional Services* \$239,574

New York University  
*Project 4: Targeted Nanotherapeutics for Acute Lymphoblastic Leukemia Therapy* \$211,307

Oregon Health & Science University  
*S1318: a Phase 2 Study of Blinatumomab (NSC-765986) and POMP* \$148,011

Children's Hospital of Philadelphia  
*Testing Targeted Therapy in Philadelphia Chromosome-like (Ph-like) ALL* \$125,448

National Cancer Institute  
*UNM Cancer Center Support Grant - Administrative Supplement to Expand NCI-Supported Community Outreach Capacity Through Community Health Educators of the National Outreach Network* \$123,226

National Cancer Institute  
*Continuing Umbrella Research Experience* \$113,625

Cowboys for Cancer Research  
*Cowboys for Cancer Research FY18* \$89,816

Brigham and Women's Hospital  
*Biomarker, Imaging and Quality of Life Studies Funding Program* \$84,513

National Cancer Institute  
*UNM Cancer Center Support Grant - Administrative Supplement (Foster Research Training & Education)* \$75,000

National Cancer Institute  
*UNM Cancer Center Support Grant - Cancer Clinical Investigator Team Leadership Award* \$60,000

St. Jude Children's Research Hospital  
*Center for Precision Medicine in Leukemia* \$58,452

Brigham and Women's Hospital  
*Alliance for Clinical Trials in Oncology Operations Center* \$45,000

**Bridget Wilson**

National Institute of General Medical Sciences  
*Center for the Spatiotemporal Modeling of Cell Signaling* \$2,516,527

**Emrullah Yilmaz**

New Mexico Cancer Care Alliance  
*Clinical Trial Phase 3* \$108,485

New Mexico Cancer Care Alliance  
*Clinical Trial Phase 3* \$106,565

New Mexico Cancer Care Alliance  
*Clinical Trial Phase 3* \$103,205

New Mexico Cancer Care Alliance  
*Clinical Trial Phase 3* \$101,925

New Mexico Cancer Care Alliance  
*Clinical Trial Phase 3* \$98,725

**Anesthesiology****Eugene Koshkin**

Boston Scientific Corporation  
*UNM Pain Medicine Fellowship 18-19: Boston Scientific* \$15,000

**Biochemistry & Molecular Biology****Natalie Adolphi**

National Institute of Justice  
*Improving and Evaluating Computed Tomography and Magnetic Resonance Imaging in the Investigation of Fatalities Involving Suspected Head Trauma* \$714,891

University of Nevada, Reno  
*CT Scans - Development of Modern Subadult Standards* \$62,792

Sandia National Laboratories  
*Optimization of Hydrogel-Like Matrices for Stabilization of Substances for EnviroNew Mexicoental Remediation and Therapeutics - Specific Supplement* \$49,000

**Meilian Liu**

National Institute of Diabetes and Digestive and Kidney Diseases  
*The Role of Adiponectin in Regulating Type 2 Innate Lymphoid Cells and Browning of Fat* \$340,875





National Institute of Diabetes and Digestive and Kidney Diseases  
*The Role of Adiponectin in Regulating Type 2 Innate Lymphoid Cells and Browning of Fat* \$340,875

#### **Martina Rosenberg**

Association of American Medical Colleges  
*First-Generation Students* \$4,347

#### **Xiang Xue**

American Cancer Society  
*The Role of Mitochondrial Iron Homeostasis in Colon Cancer* \$792,000

National Institute of Diabetes and Digestive and Kidney Diseases  
*Targeting Mitochondrial Iron Metabolism in Inflammatory Bowel Disease* \$78,300

National Institute of Diabetes and Digestive and Kidney Diseases  
*Targeting Mitochondrial Iron Metabolism in Inflammatory Bowel Disease* \$996

### **Cell Biology & Physiology**

#### **Laura Gonzalez-Bosc**

Department of the Navy  
*Cardiorespiratory Physiology Phenotyping Equipment Core* \$1,040,733

Department of the Navy  
*Biomarkers of Hypoxia Exposure* \$150,000

Department of the Navy  
*Biomarkers of Hypoxia Exposure* \$67,608

#### **Helen Hathaway**

Army Medical Research Acquisition Activity  
*The Role of P53 Synthetic Lethality in Increased Chemosensitivity to DNA-Damaging Agents Conferred by the Exercise Myokine Irisin* \$568,125

National Cancer Institute  
*Is Tumor-Adjacent Histologically Normal Tissue Primed for Tumorigenesis?* \$346,556

University of Texas at El Paso  
*BUILDing SCHOLARS - Continuation* \$54,082

#### **Nikki Jernigan**

American Heart Association  
*Metabolic Dysfunction in Pulmonary Hypertension* \$300,000

#### **Nancy Kanagy**

National Heart, Lung, and Blood Institute  
*Hydrogen Sulfide Regulation of Vascular Tone and Blood Pressure* \$371,175

National Heart, Lung, and Blood Institute  
*Hydrogen Sulfide Regulation of Vascular Tone and Blood Pressure - Non-Specific Supplement* \$7,575

#### **Nora Perrone-Bizzozero**

National Cancer Institute  
*Cold-Inducible RNA-Binding Protein Links Inflammation and Breast Cancer - Continuation* \$33,287

National Cancer Institute  
*Cold-Inducible RNA-Binding Protein Links Inflammation and Breast Cancer* \$468

#### **Thomas Resta**

National Institutes of Health  
*Vascular Smooth Muscle Signaling in Intermittent Hypoxia-Induced Pulmonary Hypertension - Continuation* \$378,750

National Institutes of Health  
*Minority Institutional Research Training Program (T32)* \$275,433

National Institutes of Health  
*Minority Institutional Research Training Program (T32) - Non-Specific Supplement* \$3,032

National Heart, Lung, and Blood Institute  
*The Role of Adaptive Immunity in Chronic Hypoxia-Induced Pulmonary Hypertension* \$273

National Heart, Lung, and Blood Institute  
*Role of PKCbeta and Oxidant Signaling in Neonatal Pulmonary Hypertension - Non-Specific Supplement* \$234

### **Dental Medicine**

#### **Gary Cuttrell**

New Mexico Higher Education Department  
*Train Dentist to Treat Peds* \$850,000

New Mexico Higher Education Department  
*Train Dentist to Treat Peds* \$800,000

Office of Rural Health Policy  
*Special Needs Dental Residency Training Program - Continuation* \$500,000

New Mexico Department of Health  
*Basic Oral Health Services* \$102,335

New Mexico Higher Education Department  
*Train Dentist to Treat Peds* \$50,000

### **ECHO Institute**

#### **Sanjeev Arora**

Leona M. and Harry B. Helmsley Charitable Trust  
*Strategic Planning & Business Plan Development to Reach 1 Billion by 2025* \$1,150,000

Defense Health Agency  
*Telementoring Services Defense Health Agency* \$773,251

African Field Epidemiology Network  
*CDC Africa ECHO Partnership - Phase 2* \$250,000

Laura and John Arnold Foundation  
*Impact of Opioid ECHO Programs on Health and Healthcare* \$178,575

Liver Institute and Foundation for Education and Research  
*Project ECHO Georgia HCV Elimination Project - Year 2* \$167,468

Health Resources and Services Administration  
*Expanding Substance Abuse Services Through the ECHO Model - Specific Supplement* \$158,960



New Mexico Corrections Department  
New Mexico Department of Corrections  
Hepatitis C \$147,158

American Institutes for Research  
AIR Medication-Assisted  
Treatment \$145,224

African Field Epidemiology Network  
CDC Africa ECHO Partnership \$115,000

Northwest Portland Area Indian Health  
Board  
Indian Health Services TeleECHO Clinic  
Support \$100,000

Tanzania Health Promotion Support  
Leveraging the ECHO Model to Improve  
Lab Services in Tanzania \$100,000

Albuquerque Area Indian Health  
Board, Inc.  
Leveraging Project ECHO for a Comprehensive  
Approach to Health and Wellness in Indian  
Country \$94,500

University of Florida  
ECHO/Stanford/Florida T1D  
Partnership \$93,500

Seattle Indian Health Board  
Project ECHO Supporting the Enhanced  
Implementation of Health and Wellness -  
Continuation \$75,000

African Society for Laboratory Medicine  
ECHO Institute Collaboration With  
the African Society of Laboratory  
Medicine \$60,000

New Mexico Department of Health  
New Mexico - Tuberculosis Project  
ECHO w/BAA \$50,000

New Mexico Department of Health  
Border Health MDR TB and Translational  
Services \$45,000

City of Albuquerque  
Bloomberg CABQ Public Safety Planning  
Project \$44,000

Health Research, Inc.  
ECHO Partnership for Quality Improvement  
Innovations in HIV Care \$31,500

University of North Carolina Medical  
School at Chapel Hill  
UNC Medication-Assisted  
Treatment \$30,579

JBS International, Inc.  
FAME Extension \$29,500

National Council for Behavioral Health  
Project ECHO Partnership With NEOMED  
and the National Council for Behavioral  
Health \$27,305

Case Western Reserve University  
ECHO Institute Partnership With Case  
Western CVDC \$20,000

New Mexico Department of Health  
Sponsorship for New Mexico AETC  
Conference \$20,000

National Association of Chronic Disease  
Directors  
Speaker's Fee for 2017 CDC National  
Cancer Conference \$3,000

### Emergency Medicine

#### Robert Alunday

University of California, Los Angeles  
Established Status Epilepticus Treatment  
Trials Phase 2 \$43,103

#### Justin Baca

Fujirebio Diagnostics  
FDI-116: A Blood Collection From Patients  
Presenting With Suspected New Onset  
or Exacerbated Heart Failure \$129,897

Avisa Pharma, Inc.  
C-Urea Breath Test for the Detection of  
Urease-Producing Bacteria in Patients  
Diagnosed With Pneumonia -  
Continuation \$42,462

Sandia National Laboratories  
On-Body Transdermal Microneedle-  
Based Diagnostic Device to Measure  
Biomarker Signatures and Report on Human  
Performance \$39,996

Sandia National Laboratories  
Optimization of Microneedles for Interstitial  
Fluid Extraction in Rats \$24,990

Avisa Pharma, Inc.  
C-Urea Breath Test for the Detection of  
Urease-Producing Bacteria in Patients  
Diagnosed With Pneumonia \$14,872

#### Laura Banks

New Mexico Transportation Department  
Pedestrian Safety Initiative  
FY18 \$300,000

New Mexico Department of Health  
Hospital and Health Systems  
Preparedness \$99,698

New Mexico Transportation Department  
Pedestrian Safety Initiative \$86,518

New Mexico Department of Health  
Hospital and Health Systems Preparedness -  
Specific Supplement \$21,100

Safe Kids Worldwide  
Safekids Walk This Way \$500

#### Darren Braude

Department of the Air Force  
UNM Educational Service Agreement -  
Continuation \$518,760

Department of the Air Force  
UNM Educational Service  
Agreement \$352,080

Department of the Air Force  
UNM Educational Service  
Agreement \$264,060

Gypsum Medical Associates of New  
Mexico, P.C.  
Medical Directorship/Professional  
Services \$78,120

New Mexico Public Safety Department  
Medical Director for TEMS  
Program \$55,000

Department of the Air Force  
UNM Educational Service  
Agreement \$48,000

City of Rio Rancho  
Medical Direct Services \$37,200

Department of the Air Force  
UNM Educational Service  
Agreement \$36,000

Department of the Air Force  
UNM Educational Service  
Agreement \$34,128

Department of the Air Force  
UNM Educational Service  
Agreement \$34,128

City of Rio Rancho  
Professional Services \$10,500

Los Alamos National Laboratory  
First Responder Training Course \$6,402

Village of Angel Fire  
Medical Directorship \$6,000

City of Rio Rancho  
Professional Services  
Agreement \$5,000

City of Rio Rancho  
Professional Services \$5,000

Department of the Air Force  
CE Package Course \$3,610

Department of the Air Force  
2018 CE Package Course \$2,565

#### Joy Crook

New Mexico Department of Health  
New Mexico Statewide EMS  
Project \$50,000

#### Jon (Kenneth) Femling

Sandia National Laboratories  
Rim to Rim 2016 \$60,000





Olive View Medical Center-UCLA  
EMERGENCY IDnet:Emergency Department  
Sentinel Network for Surveillance  
of Emerging Infections \$8,000

Olive View Medical Center-UCLA  
EMERGENCY IDnet:Emergency Department  
Sentinel Network for Surveillance  
of Emerging Infections Phase 3 \$2,000

#### **Melissa Fleegler**

University of Texas Health Center at Tyler  
Feasibility Grant for Resident Community  
Experience \$18,500

#### **Andrew Harrell**

U.S. National Park Service  
Grand Canyon National Park - EMS Medical  
Services \$24,000

Department of the Army  
Wilderness EMT Upgrade Course \$4,000

#### **Jason McKee**

Rhode Island Hospital  
Non-Operative Management of Pediatric  
Appendicitis: a Randomized Controlled  
Study (Phase 1) \$13,220

#### **Steven McLaughlin**

Taos Ski Valley Foundation  
Taos Ski Valley \$250,000

Bernalillo County Fire Department  
Medical Directorship \$60,053

New Mexico Public Safety Department  
EMS Services for TEMS \$54,476

Sandoval County  
Medical Directorship \$54,000

New Mexico State Fair  
Emergency Medical Services and Medical  
Directorship \$52,925

City of Albuquerque  
Professional Services Agreement \$50,000

Wilderness Medics Inc  
Medical Director \$50,000

Kindred Hospital  
Medical Director Services \$25,000

Wilderness Medics Inc  
Medical Director \$25,000

Taos County  
Medical Directorship \$24,000

DCI Donor Services  
Professional Services \$19,777

Bernalillo County  
Medical Directorship \$14,000

K&I Field Services  
Medical Direction and Care \$12,500

Cibola County  
Medical Directorship \$12,000

City of Rio Rancho  
Professional Services \$10,500

Valencia Regional Emergency  
Communication Center  
Professional Services \$9,000

Village of Cuba  
Medical Directorship \$4,100

Village of Tijeras  
Medical Directorship \$3,600

Town of Cochiti Lake  
Medical Director Services \$3,450

Quick Draw  
Medical Directorship \$3,300

#### **Grace (Joo-Hee) Park**

University of Michigan  
RNA Biosignatures: a Paradigm Change for  
the Management of Young Febrile Infants  
(Phase 1) \$41,056

#### **Robert Sapien**

Office of Rural Health Policy  
High-Poverty Rural Children Telehealth  
Network Grant Program -  
Continuation \$325,000

Health Resources and Services  
Administration  
Child Ready: Expanding a Novel  
Community Self-Assessment Approach  
to Regionalization \$200,000

University of Arizona  
EMSC: Pediatric Emergency Care Applied  
Research Network Phase 3 \$161,482

Health Resources and Services  
Administration  
EMS for Children State Partnership  
Grant \$74,789

Maternal and Child Health Bureau  
New Mexico EMS for Children  
Program \$61,555

Health Resources and Services  
Administration  
EMS for Children State Partnership  
Grant \$55,206

#### **Dusadee Sarangarm**

U.S. Department of Justice  
U.S. Attorney Expert Witness  
Contract - Sarangarm \$15,688

#### **Philip Seidenberg**

Siemens Healthcare Diagnostics, Inc.  
Clinical Trial Agreement - Phase 4 - Specific  
Supplement \$32,952

#### **Chelsea White**

Pueblo of Laguna Fire Protection Program  
Laguna Pueblo Medical  
Direction \$80,000

Pueblo of Acoma EMS  
Acoma Pueblo EMS Medical Directorship -  
Continuation \$36,000

Pine Hill Health Center  
Medical Directorship for Ramah Navajo  
School Board, Inc. Pine Hill, N.M.  
w/BAA \$36,000

#### **Jenna White**

Pueblo of Jemez  
Pueblo of Jemez Medical Direction  
w/BAA \$20,000

### **Family & Community Medicine**

#### **Marlene Ballejos**

Association of American Medical  
Colleges  
AAMC Funding \$5,000

**Antoinette Benton**

New Mexico Department of Health  
*Transdisciplinary Evaluation and Support Clinic* \$494,268

Falling Colors Corporation  
*Pre-Administration Screening and Resident Review* \$190,500

Falling Colors Corporation  
*Pre-Administration Screening and Resident Review - FY19* \$185,304

Falling Colors Corporation  
*Pre-Administration Screening and Resident Review - Specific Supplement* \$127,000

**Laura Chambers-Kersh**

University of California, San Francisco  
*Mozambique Family Medicine Position* \$13,716

**Jennifer Hettema**

Public Health Service  
*Prevention of Teen Pregnancy Through Screening and Brief Intervention in Primary Care - Continuation* \$1,000,000

**Arthur Kaufman**

Bernalillo County  
*Adverse Childhood Experiences* \$998,928

University of Colorado  
*Southwest Health Extension Partnership to Enhance Research Dissemination* \$672,527

University of Colorado  
*Southwest Health Extension Partnership to Enhance Research Dissemination* \$461,908

New Mexico Human Services Department  
*Community Health Worker Medicaid Pilot Project* \$300,000

Presbyterian Healthcare Services  
*Presbyterian Healthcare Contract for Services* \$217,516

**Sarah Lathrop**

New Mexico Department of Health  
*New Mexico Emerging Infections Program - Continuation FY18* \$816,127

New Mexico Department of Health  
*New Mexico Emerging Infections Program* \$419,165

**Lawrence Leeman**

Anonymous Non-Profit Foundation  
*Early Training at UNM FY18* \$31,560

**Orrin Myers**

U.S. National Park Service  
*Statistical Analyses of Restoration Monitoring Programs in the Jemez Mountains of Northern New Mexico* \$19,445

**Janet Page-Reeves**

EleValle  
*EleValle Evaluation Services* \$75,000

**Tassy Parker**

University of Colorado Denver  
*Collaborative Hubs to Reduce the Burden of Suicide Among American Indian & Alaska Native Youth* \$142,404

Albuquerque Area Indian Health Board, Inc.  
*Tribal Solutions - Continuation* \$60,915

Washington State University  
*Native-Controlling Hypertension and Risks Through Technology - Continuation* \$52,163

University of Colorado Denver  
*NIDDK-Funded Center for American Indian and Alaska Native Diabetes Translation Research* \$37,497

University of Colorado Health Sciences Center  
*Center for American Indian and Alaska Native Health Disparities* \$29,682

Washington State University  
*Native-Controlling Hypertension and Risks Through Technology* \$3,889

**David Rakel**

Bernalillo County Juvenile Detention Center  
*Professional Services Agreement* \$136,973

First Choice Community Healthcare  
*Professional Service Agreement* \$30,160

Presbyterian Medical Services  
*Professional Services* \$25,200

**Robert Rhyne**

New Mexico Department of Health  
*Academic Detailing Project* \$100,000

**Helene Silverblatt**

Bureau of Health Workforce  
*Area Health Education Centers Program* \$309,000

Bureau of Health Workforce  
*Area Health Education Centers Program - Specific Supplement* \$16,734

**Andrew Sussman**

Society of Family Planning  
*Applying the ECHO Model to Reproductive Health in El Salvador* \$74,992

**Nathania Tsosie**

Notah Begay III Foundation  
*Training and Technical Assistance to the Notah Begay III Foundation's Native Strong Program* \$5,000

**Sherry Weitzen**

University of Nevada, Las Vegas  
*Identifying Predictors of Neonatal Abstinence Syndrome Towards Developing a Risk Score Model* \$58,130

**Robert Williams**

Health Resources and Services Administration  
*Transforming Primary Care in Under-Served Communities - Continuation* \$249,998

Virginia Commonwealth University  
*Implementing Personal Health Records to Promote Evidence-Based Cancer Screening - Continuation* \$124,895



**Christos Argyropoulos**

Dialysis Clinic, Inc.  
PARALLEL Analysis of Extra Large HEALTH  
Care Datasets \$125,727

Arbor Research Collaborative for Health  
Protocol 201801.1 Phase 4 Chronic Kidney  
Disease Outcomes and Practice Patterns  
Study \$120,000

University of Pennsylvania  
Transformative Research in Diabetic  
Nephropathy \$49,999

University of Pennsylvania  
MicroRNAs in Progressive Renal Disease -  
a Pilot Study in CRIC \$28,302

Momenta Pharmaceuticals  
Autoimmune Nephritis Consulting  
Services \$2,000

**Sanjeev Arora**

Abbott Laboratories Inc.  
Collection of Plasma and/or Serum Samples  
From Subjects Infected With Chronic  
Hepatitis C Virus Genotype 1, 2 and 3 on an  
FDA-Approved Treatment Such As Harvoni,  
Epclusa or Mavyret \$615,400

Merck, Sharp & Dohme, Inc.  
Clinical Study to Evaluate the Efficacy and  
Safety of the Combination Regimen of MK-  
3682B (Grazoprevir/ruzasvir/uprifosbuvir) in  
Participants With Chronic Hepatitis C Virus  
Genotype 3 Infection \$173,814

**Edgar Boedeker**

U.S. Department of Veterans Affairs  
Medical Center  
IPA-Prashanth Setty \$30,000

**Cristian Bologa**

Givaudan Flavors Corporation  
Givaudan Research Agreement -  
Year 10 \$200,000

**Steven Bradfute**

Defense Threat Reduction Agency  
Effects of Differential Glycosylation on  
Filovirus Glycoprotein  
Immunogenicity \$245,250

Defense Threat Reduction Agency  
Effects of Differential Glycosylation on  
Filovirus Glycoprotein Immunogenicity -  
Continuation \$200,000

Defense Threat Reduction Agency  
Effects of Differential Glycosylation on  
Filovirus Glycoprotein  
Immunogenicity \$81,750



**Stacey Clegg**

Duke University  
Phase 4 Study of Access Site for Enhancing  
PCI in STEMI for Seniors (SAFE-STEMI for  
Seniors) \$3,000

**Deirdre Hill**

Dialysis Clinic, Inc.  
Chronic Kidney Disease Development  
in Breast Cancer Treatment and  
Survival \$170,173

**Ivy Hurwitz**

Loyola University Chicago  
Paratransgenic Sand Flies \$39,887

**Saeed Kamran Shafi**

Omeros Corporation  
Protocol OMS721-IGA-001: a  
Randomized, Double-Blind, Placebo-  
Controlled, Phase 3 Study of the Safety  
and Efficacy of OMS721 in Patients With  
Immunoglobulin a (Iga) Nephropathy  
(ARTEMIS - IGAN) \$106,262

Dialysis Clinic, Inc.  
UNM Kidney Biopsy Registry \$22,163

**Denece Kesler**

Bureau of Health Workforce  
Preventive Medicine Residency  
Program \$399,988

Office of Rural Health Policy  
Radiation Exposure Screening Education  
Program \$249,935

Johns Hopkins University  
Development of a Medical Screening Program  
for Former LANL & Sandia Workers -  
Continuation \$5,000

**Olga Kovbasnjuk**

University of Maryland, Baltimore County  
Pathogenesis of E. Coli and Shigella Infections  
in Human Enteroid Models \$201,703

Baylor College of Medicine  
Intestinal Stem Cell Response to  
Infection \$41,500

University of Washington  
A Microphysiological System for Kidney  
Disease Modeling and Drug Efficacy  
Testing \$37,875

**Christophe Lambert**

National Institutes of Health  
A Microaggregation Framework for  
Reproducible Research With Observational  
Data: Addressing Biases While  
Protecting Personal Identities -  
Continuation \$162,870

**Warren Laskey**

U.S. Department of Veterans Affairs  
Interventional Cardiology  
Services \$430,856

Rutgers, The State University of New  
Jersey  
Myocardial Ischemia and  
Transfusion - CCC \$153,000

**Samuel Lee**

U.S. Department of Veterans Affairs  
IPA- Stella Jubay \$29,981

**Thomas Ma**

National Institute of Diabetes and  
Digestive and Kidney Diseases  
Bifidobacterium Bifidum Modulation of  
Intestinal Barrier and Intestinal  
Inflammation \$446,227

National Institute of Diabetes and Digestive and Kidney Diseases  
Regulation of Intestinal Paracellular Permeability \$418,602

#### **Lisa Marr**

Southcentral Foundation Palliative Care Consulting \$2,100

#### **Lana Melendres-Groves**

United Therapeutics Corporation  
Phase 1 Clinical Trial: Inhaled Treprostinil in Subjects With Pulmonary Hypertension (2) - Specific Supplement \$64,338

Liquidia Technologies  
Protocol LTI-301: A Phase 3 Open-Label, Multicenter Study to Evaluate the Long-Term Safety and Tolerability of Inhaled LIQ861 (Treprostinil) in Pulmonary Arterial Hypertension (WHO Group 1) Patients \$51,104

Actelion Pharmaceuticals, Ltd.  
TRITON: The Efficacy and Safety of Initial Triple Versus Initial Dual Oral Combination Therapy in Patients With Newly Diagnosed Pulmonary Arterial Hypertension \$31,325

Actelion Clinical Research, Inc.  
Protocol AC-065A402: Uptravi (Selexipag): the Users Drug Registry \$19,088

Pharmaceutical Research Assoc.  
Protocol AC-055-510: U.S.-Based Observational Drug Registry of Opsumit (Macitentan) New Users in Clinical Practice \$19,088

#### **Gregory Mertz**

Metabiota  
Prevalence of Crimean Congo Hemorrhagic Fever Virus and Hantaviruses in Ukraine and the Potential Requirement for Differential Diagnosis of Suspect Leptospirosis Patients \$40,992

#### **Larissa Myaskovsky**

University of Pittsburgh  
Increasing Equity in Transplant Evaluation and Living Donor Kidney Transplantation \$86,785

University of Pittsburgh  
Cardiac Resynchronization in the Elderly: Piloting Pacemaker vs. Defibrillator Therapy - Continuation \$14,845

University of Pittsburgh  
Improving the Availability of Younger Unrelated Hematopoietic Stem Cell Donors - Continuation \$9,272

University of Pittsburgh  
Improving the Availability of Younger Unrelated Hematopoietic Stem Cell Donors \$7,613

University of Pittsburgh  
Cardiac Resynchronization in the Elderly: Piloting Pacemaker vs. Defibrillator Therapy \$7,321

#### **Stuart Nelson**

Dialysis Clinic, Inc.  
Developing a Knowledge Management Tool for Kidney Disease \$342,373

#### **Prashant Nighot**

National Institutes of Health  
Regulation of Intestinal Tight Junction Barrier and Inflammation by Autophagy \$365,835

National Institutes of Health  
Role of the Chloride Channel Clc-2 in Intestinal Tight Junction Barrier Recovery \$147,916

#### **Tudor Oprea**

National Institutes of Health  
Knowledge Management Center for Illuminating the Druggable Genome \$1,013,500

National Cancer Institute  
Illuminating the Druggable Genome - the Knowledge Management Center \$368,000

University of North Carolina  
The Integration of Trans-Omics for Precision Medicine and Other Heart, Lung, Blood and Sleep Data Sets With the Data Commons \$163,310

University of Gothenburg  
Visiting Professorship Agreement \$91,509

University of North Carolina  
A Collaboration for the Data Commons \$87,936

Rosalind Franklin University of Medicine and Science  
Ligand Specificity in Human Glucose Transporters - Continuation \$67,278

#### **Kimberly Page**

National Institute on Drug Abuse  
Acute Hepatitis C Infection in Young Injectors \$1,358,160

Upstate Affiliate Organization  
Patient-Centered Models of Hepatitis C Care for People Who Inject Drugs \$554,769

University of California, San Francisco  
Sexually Transmitted Infections Clinical Trials Group - Continuation \$18,085



University of California, San Francisco  
Sexually Transmitted Infections Clinical Trials Group \$14,297

Montefiore Medical Center  
Patient-Centered Models of HCV Care for People Who Inject Drugs - Gilead Supplement \$12,914

#### **Vernon Pankratz**

Dialysis Clinic, Inc.  
Professional Services Agreement - Biostatistician Services \$46,776

#### **Gulshan Parasher**

U.S. Department of Veterans Affairs  
Medical Center  
IPA - Karol Dokladny \$40,754

U.S. Department of Veterans Affairs  
Medical Center  
IPA - Meghali Nighot \$32,857

U.S. Department of Veterans Affairs  
Medical Center  
IPA - Manmeet Rawat \$28,915

#### **Douglas Perkins**

National Institute of Allergy and Infectious Diseases  
Defining the Inflammation and Immunity Transcriptome in Severe Malarial Anemia for Immunotherapeutic Discovery \$773,738

John E. Fogarty International Center for Advanced Study in the Health Sciences  
Training and Research on Severe Malarial Anemia \$270,270

John E. Fogarty International Center for Advanced Study in the Health Sciences  
Training and Research on Severe Malarial Anemia \$268,226

Harvard School of Public Health  
Fogarty Global Health Training Fellowship Program \$14,152



**Surya Pierce**

The Bell Group, Inc.

Professional Services: UNMMG Center for Life A6 \$12,000

**David Schade**The George Washington University  
Continuation of Glycaemia Reduction Approaches in Diabetes: a Comparative Effectiveness Study \$671,418National Institute of Diabetes and Digestive and Kidney Diseases  
Diabetes Prevention Program (DPPOS) - Phase 3 \$227,909Case Western Reserve University  
Epidemiology of Diabetes Intervention and Complications \$124,471National Institute of Diabetes and Digestive and Kidney Diseases  
Diabetes Prevention Program (DPPOS) - Phase 3 \$31,991Case Western Reserve University  
EDIC Skeletal Health Study Phase 3 \$27,642Case Western Reserve University  
EDIC Hypoglycemia - Arrhythmia Study Phase 3 \$19,009Case Western Reserve University  
Hearing Impairment in Long-Term Type I Diabetes - Continuation \$14,643Case Western Reserve University  
Effects of Biomedical Risk Factors on Neuro-Cognition Using MRI: Long-Term Follow-Up of the Diabetes Control & Complications Trial/Epidemiology of Diabetes Interventions & Complications Study Phase 4 \$14,075University of South Florida  
Type I Diabetes TrialNet \$2,500**Melissa Schiff**New Mexico Governor's Commission on Disability  
Access to Neuropsychological Testing in New Mexico \$12,000**Wilmer Sibbitt**Celgene Corporation  
Clinical Trial - Phase 3 \$34,303**Akshay Sood**Alpha Foundation  
Evaluation of a Novel Program to Build Rural Teams Providing Care for Miners \$250,000Miners' Colfax Medical Center  
Medical Consultation and Care \$152,342QTC Medical Group  
Second Medical Opinion Evaluations FY19 \$30,000QTC Medical Group  
Second Medical Opinion Evaluations \$25,000Miners' Colfax Medical Center  
Outpatient Evaluation & Treatment \$11,280**Mark Unruh**Anonymous Non-Profit Foundation  
Medical Directorship and QA \$1,181,620Anonymous Non-Profit Foundation  
Medical Directorship - Evergreen \$1,181,620University of Pittsburgh  
Technology-Assisted Stepped Collaborative Care Intervention to Improve Patient-Centered Outcomes in Hemodialysis Patients \$242,348Albuquerque Area Indian Health Service  
Nephrology and Rheumatology IHS Specialty Services \$135,189University of Washington  
Treatment Options for Insomnia for ESRD \$127,134Physician Group of New Mexico  
Professional and Administrative Agreement \$125,000Emory University  
Advance Care Planning for Dialysis Patients and Surrogates: an Effectiveness-Implementation Trial of SPIRIT in ESRD \$118,246Anonymous Non-Profit Foundation  
Medical Directorship and QA-Travel \$54,240University of Pennsylvania  
Data Coordinating Center for Hemodialysis Pilot Studies Consortium (ACTION) \$32,839Honeywell Corporation  
Professional Occupational Medical Services \$25,000Kindred Hospital  
Infection Control Medical Director \$25,000Lovelace Respiratory Research Institute  
Occupational Environmental Health Clinical Services \$25,000Lovelace Respiratory Research Institute  
Occupational and Environmental Health Clinical Services \$25,000Physician Group of New Mexico  
Professional and Administrative Services Agreement \$25,000Zenith American Solutions, Inc.  
Professional Services \$25,000Emory University  
Advance Care Planning for Dialysis Patients and Surrogates: An Effectiveness-Implementation Trial of SPIRIT in ESRD \$13,635Physician Group of New Mexico  
Pulmonary Consulting Services \$13,000**Carolyn Voss**St. Catherine Healthcare and Rehabilitation Center  
Medical Directors Services FY18 \$41,472**Brent Wagner**National Institute of Diabetes and Digestive and Kidney Diseases  
Chemokine Receptors in MRI Contrast-Induced Organ Fibrosis \$155,371National Institute of Diabetes and Digestive and Kidney Diseases  
Chemokine Receptors in MRI Contrast-Induced Organ Fibrosis - Non-Specific Supplement \$81,889**Steven Williams**Health Resources and Services Administration  
Comprehensive HIV Early Intervention Services (Ryan White Part C) - Non-Specific Supplement \$535,440HIV-AIDS Bureau  
Ryan White HIV/AIDS Program Part D Coordinated HIV Services and Access to Research for Women, Infants, Children, and Youth \$492,914Health Resources and Services Administration  
Comprehensive HIV Early Intervention Services (Ryan White Part C) \$348,845Health Resources and Services Administration  
Comprehensive HIV Early Intervention Services (Ryan White Part C) \$183,121**Molecular Genetics & Microbiology****Ellen Beswick**University of Texas Medical Branch at Galveston  
Alteration in CD90+ Stomal Cells in TH1/TH17 Regulation in Crohn's Disease \$27,000

**Kiran Bhaskar**

National Institute of Neurological Disorders and Stroke  
*The Role of Inflammasome Signaling in Tauopathies - Specific Supplement* \$50,000

**Judy Cannon**

Tau Technologies  
*Interacting Swarms of Agents: From Immunology to Social Media* \$214,544

U.S. Department of Veterans Affairs  
*Immune-Mediated Pathways in Pathogenesis of Abdominal Aortic Aneurysm* \$2,500

U.S. Department of Veterans Affairs  
*Dr. Christine Pham St. Louis VA Research* \$2,500

**Bryce Chackerian**

National Institutes of Health  
*A Nanoparticle-Based Vaccine Targeting PCSK9* \$340,459

Massachusetts General Hospital  
*CDRH3-Independent B Cell Stimulation to Selectively Expand VRC01 Lineages From a Fully Humanized Immunoglobulin Repertoire* \$198,497

Henry M. Jackson Foundation  
*ACC STI CRC Supplement UNM Subcontract* \$30,483

National Institutes of Health  
*A Nanoparticle-Based Vaccine Targeting PCSK9 - Non-Specific Supplement* \$6,949

Endospine  
*Production of QB VLPs* \$5,000

**Vojo Deretic**

National Institute of General Medical Sciences  
*Autophagy, Inflammation and Metabolism in Disease Center* \$2,457,111

National Institute of Allergy and Infectious Diseases  
*Autophagy Against Tuberculosis and HIV* \$658,214

National Institute of Allergy and Infectious Diseases  
*Pattern Recognition Receptors and Autophagy in Mtb Control in AIDS* \$492,962

**Mary Ann Osley**

National Institute on Aging  
*Functional Analysis of Cellular Quiescence* \$310,575

National Institute on Aging  
*Functional Analysis of Cellular Quiescence - Continuation* \$310,575

**Michelle Ozbun**

Janssen Pharmaceutical  
*Infectious Transmission of Human Papillomavirus From Patient Samples* \$478,324

National Cancer Institute  
*Mechanisms of Infection by Oncogenic HPVs - Continuation* \$345,925

**Neurology****Christopher Calder**

Eastern New Mexico Medical Center  
*Professional Services* \$75,000

Vertex Pharmaceuticals, Inc.  
*Protocol VX16-150-102: A Phase 2, Randomized, Double-Blind, Placebo-Controlled, 6-Week, Parallel-Design Study of the Efficacy and Safety of VX-150 in Treating Subjects With Pain Caused by Small Fiber Neuropathy* \$57,768

San Juan Regional Medical Center  
*Professional Services* \$25,000

Mind Research Network  
*MRN Administrative Operations - Continuation FY19* \$20,252

Mind Research Network  
*MRN Administrative Operations* \$19,855

Vertex Pharmaceuticals, Inc.  
*Protocol VX16-150-102: A Phase 2, Randomized, Double-Blind, Placebo-Controlled, 6-Week, Parallel-Design Study of the Efficacy and Safety of VX-150 in Treating Subjects With Pain Caused by Small Fiber Neuropathy - Specific Supplement* \$7,421

Mind Research Network  
*MRN Administrative Operations* \$53

**Corey Ford**

PSI Pharma Support America, Inc.  
*Protocol TG1101-RMS302 Phase III: Ublituximab in Multiple Sclerosis Treatment Effects (Ultimate II Study)* \$391,212

Adamas Pharmaceuticals, Inc.  
*Protocol ADS-AMT-MS301: A 3-arm, Multi-center, Double-Blinded, Placebo-Controlled, Randomized Study to Assess the Efficacy and Safety of ADS-5102 Amantadine Extended Release Capsules in Multiple Sclerosis Patients With Walking Impairment* \$129,144

Consortium of Multiple Sclerosis Centers NARCRMS: Towards the Development of a National Longitudinal Database in Multiple Sclerosis \$95,499

Genentech, Inc.  
*Clinical Trial Agreement-Phase 3* \$91,294

Alkermes, Inc.  
*A Phase 3 Study in Subjects With Relapsing Remitting MS to Evaluate the Tolerability of ALKS8700 and Dimethyl Fumarate* \$79,424

Mallinckrodt, Inc.  
*A Multicenter, Randomized, Double-Blind, Placebo-Controlled Parallel Group, Pilot Study to Assess the Efficacy and Safety of the H.P. Acthar Gel in Subjects With Relapsing Remitting Multiple Sclerosis Protocol MNK14274069* \$65,481

Parexel International  
*Effect of MD1003 in Progressive MS: a Pivotal Randomized Double-Blind Placebo Controlled Study* \$59,582

University of Southern California  
*Acculturation, Genetic Ancestry, and Disability in Hispanic Americans With Multiple Sclerosis Phase 4* \$38,597





**Monika Krzesniak-Swinarska**

University of Rochester

FOR-DMD: Double-Blind Randomized Trial to Optimize Steroid Regimen in Duchenne MD AWD00001200 \$15,150

**Leslie Morrison**

University of California, San Francisco

The Brain Vascular Malformation Consortium: Predictors of Clinical Course - Phase 3 Clinical Trial \$159,526

University of Chicago

Trial Readiness in Cavernous Angiomas With Symptomatic Hemorrhage \$47,000

**Surojit Paul**

National Institute of Neurological Disorders and Stroke

Role of Brain-Specific Tyrosine Phosphatase STEP in Neuroprotection and Death \$518,949

National Institute of Neurological Disorders and Stroke

Role of Brain-Specific Tyrosine Phosphatase STEP in Neuroprotection and Death - Non-Specific Supplement \$33,032

**John Phillips**

Eunice Kennedy Shriver National Institute of Child Health and Human Development Building Research Capacity in Child Neurology: a U.S.-Sri Lanka Research Collaborative \$196,458

Mind Research Network

MRN Medical Director - FY19 \$100,745

Pharm-Olam International

Dysport - Clinical Trial Phase 3 \$40,115

**Ranjana Poddar**

National Institutes of Health

Hyperhomocysteinemia and Ischemic Stroke - Continuation FY19 \$330,313

National Institutes of Health

Hyperhomocysteinemia and Ischemic Stroke - Non-Specific Supplement \$33,032

**Stefan Posse**

National Institute of Biomedical Imaging and Bioengineering

High-Frequency Resting State Connectivity FMRI \$167,859

Mind Research Network

MDA-Posse-Multimodal Imaging of Neuropsychiatric Disorders: Mechanisms & Biomarkers (COBRE II) \$30,059

National Institute of Biomedical Imaging and Bioengineering

High-Frequency Resting State Connectivity FMRI \$18,652

**Jennifer Ann Vickers**

New Mexico Department of Health

CMS Outreach Clinics - Neurology - Specific Supplement \$21,100

**Guangbin Xia**

National Institute of Arthritis and Musculoskeletal and Skin Diseases

Genome Correction of Myotonic Dystrophy Type 1 IPS Cells by TALEN Technology \$158,112

National Institute of Arthritis and Musculoskeletal and Skin Diseases

Genome Correction of Myotonic Dystrophy Type 1 IPS Cells by TALEN Technology \$53,567

University of Rochester

FOR-DMD: Double-Blind Randomized Trial to Optimize Steroid Regimen in Duchenne MD AWD00001200 \$15,150

University of Rochester

Support for DMD Project, Part I AWD00001193 (Industry) \$4,134

**Yi Yang**

electroCore, LLC

Non-Invasive Vagus Nerve Stimulation Reduces Blood-Brain Barrier \$7,587

electroCore, LLC

Neuroprotective Role of Non-Invasive Vagus Nerve Stimulation on Stroke-Induced Blood-Barrier Damage in Rat Model - Continuation \$2,600

**Atif Zafar**

University of Cincinnati

Atrial Cardiopathy and Antithrombotic Drugs in Prevention After Cryptogenic Stroke - Continuation \$29,366

University of Cincinnati

Atrial Cardiopathy and Antithrombotic Drugs in Prevention After Cryptogenic Stroke - Continuation \$28,549

**Neurosciences****Andrea Allan**

National Institutes of Environmental Health Sciences

Prenatal Arsenic Exposure Alters Transcriptional, Post-Transcriptional and Post-Translational \$335,871

**Jonathan Brigman**

National Institute on Alcohol Abuse and Alcoholism

Prenatal Alcohol Exposure and Corticostriatal Control of Behavioral Flexibility \$332,304

University of California, San Diego

Neurophysiological Biomarkers of Behavioral Dimensions \$15,323

**Lee Anna Cunningham**

National Institute on Alcohol Abuse and Alcoholism

Connectivity of Adult-Generated Dentate Granule Cells in a Mouse Model of Prenatal Alcohol Exposure \$44,524

**Erin Milligan**

National Institute on Alcohol Abuse and Alcoholism

Prenatal Alcohol Exposure Potentiates Pain Via Lifelong Spinal-Immune Changes \$331,083

**Nora Perrone-Bizzozero**

University of South Carolina

Antagonistic Roles of Hud and KSRP for MRN Stability in Neuronal Growth \$233,526

University of South Carolina

Antagonistic Roles of Hud and KSRP for MRN Stability in Neuronal Growth - Continuation \$222,357

Mind Research Network

Mining the Genome-Wide Scan: Genetic Profiles of Structural Loss in Schizophrenia \$33,624

National Institute on Drug Abuse

Opposing Roles of Mir-495 and Hud in Addiction-Related Plasticity and Behavior \$468

**Daniel Savage**

National Institute on Alcohol Abuse and Alcoholism

Fetal Ethanol-Induced Behavioral Deficits: Mechanisms, Diagnoses and Interventions - Continuation \$1,594,455

National Center for Advancing Translational Sciences

Impact of SAR152954 on Prenatal Alcohol Exposure-Induced Neurobehavioral Deficits \$303,000

**Bill Shuttleworth**

National Institute of General Medical Sciences

UNM CBRR - Continuation Year 3 \$2,159,377

National Institute of General Medical Sciences

UNM CBRR - Continuation Year 4 \$2,132,992

National Institute of Neurological Disorders and Stroke  
*Spreading Depolarizations and Neuronal Vulnerability* \$337,945

### Carlos Valenzuela

National Institute on Alcohol Abuse and Alcoholism  
*Alcohol and Developing Neuronal Circuits (MERIT AWARD) - Continuation* \$340,875  
 National Institute on Alcohol Abuse and Alcoholism  
*Alcohol Research Training in Neurosciences* \$115,279

National Institute on Alcohol Abuse and Alcoholism  
*Alcohol and Developing Neuronal Circuits (MERIT AWARD) - Non-Specific Supplement* \$37,875

Baylor College of Medicine  
*Targets of Low-Dose Alcohol During Cerebellar-Driven Behavior in Mice* \$8,729

### Jason Weick

Clemson University  
*R11 Track-2 FEC: The Creation of Next-Generation Tools for Neuroscience* \$243,890  
 National Institute of Neurological Disorders and Stroke  
*Directing Corticospinal Motor Neurons for Cell Replacement in Stroke* \$49,524

### Tou Yia Vue

National Institute of Neurological Disorders and Stroke  
*Underlying Molecular Mechanisms of Gliogenesis and Gliomagenesis in the CNS* \$240,594

## Neurosurgery

### Denis Bragin

Army Medical Research Acquisition Activity  
*A Novel Advanced Resuscitation Fluid for Traumatic Brain Injury With Hemorrhagic Shock* \$1,416,397

### Andrew Carlson

Johns Hopkins University  
*MISTIE III: A Phase 3 Randomized, Open-Label, 500-Subject Clinical Trial of Minimally Invasive Surgery Plus Rt-PA in the Treatment of Intracerebral Hemorrhage* \$142,558  
 CerebroScope  
*Scalp SD Detection* \$113,325

### Muhammad Chohan

NeurlInsight, LLC  
*Clinical Real-Time Resting State FMRI 1r41 NS090691-0* \$3,000

### Joanna Katzman

Indian Health Service  
*UNM Pain Center Educational Collaboration With Indian Health Services* \$216,927  
 Adapt Pharma  
*Naloxone Use in Opioid Treatment Programs Throughout New Mexico* \$20,000

### Jeremy Lewis

Vertex Pharmaceuticals Incorporated  
*Protocol VX15-210-101: a Phase 2b/3, Double-Blind, Randomized, Placebo-Controlled, Multicenter Study to Assess the Efficacy and Safety of VX-210 in Subjects With Acute Traumatic Cervical Spinal Cord Injury* \$106,915

### Edwin Nemoto

Endonovo Therapeutics  
*Pulsed Electromagnetic Field Reduction of CSF and Serum Biomarkers After Traumatic and Cerebrovascular Accident Brain Injury* \$89,696

### Tamara Roitbak

National Institute of Neurological Disorders and Stroke  
*In Vivo Inhibition of Specific MicroRNAs* \$331,406

### Howard Yonas

Presbyterian Healthcare Services  
*Professional Services/Consultations* \$1,420,000  
 Guadalupe County Hospital  
*Master Hospital Agreement* \$30,000  
 Roosevelt General Hospital  
*Master Hospital Agreement* \$30,000  
 Los Alamos Medical Center  
*Master Hospital Agreement* \$25,000  
 Lovelace Health System  
*Master Hospital Agreement Service Schedules 1-3* \$25,000  
 Memorial Medical Center  
*Master Hospital Agreement Service Schedule 1-3* \$25,000  
 Miners Colfax Medical Center  
*Master Hospital Agreement* \$25,000  
 Miners Colfax Medical Center  
*Master Hospital Agreement* \$25,000  
 Net Medical Xpress  
*Department of Neurosurgery* \$25,000

Net Medical Xpress  
*ACCESS Project Telemedicine Technology* \$25,000  
 Roosevelt General Hospital  
*Master Hospital Agreement* \$25,000  
 Roswell Hospital Corporation  
*Master Hospital Agreement* \$25,000  
 Union County General Hospital  
*Master Hospital Agreement* \$25,000  
 Mimbres Memorial Hospital  
*Extension of Services* \$10,000

## Obstetrics & Gynecology

### Conrad Chao

New Mexico Department of Health  
*High-Risk Prenatal Care* \$82,460

### Gena Dunivan

Viveve, Inc.  
*Protocol VI-15-01: VIVEVE II: Viveve Geneveve Treatment of the Vaginal Introitus to Evaluate Safety and Efficacy* \$68,617

### Eve Espey

Anonymous Non-Profit Foundation  
*Fellowship in Family Planning* \$406,477  
 Planned Parenthood of the Rocky Mountains  
*Planned Parenthood of the Rocky Mountains* \$110,448  
 Albuquerque Area Indian Health Service  
*OBGYN IHS Specialty Services* \$72,490  
 First Choice Community Healthcare  
*Professional Services* \$67,000  
 New Mexico Department of Health  
*Provide Risk-Appropriate Prenatal Medical Services to Medically Indigent Women in New Mexico With Obstetrical and/or Medical Complications* \$54,960  
 St. Vincent Regional Medical Center  
*Professional Services* \$25,000  
 New Mexico Department of Health  
*Certified Nurse Midwife Contractor Project w/BAA* \$20,000  
 Society of Family Planning  
 PHARM \$6,696

### Lisa Hoffer

Society of Family Planning  
 PPEPPI \$89,644  
 New Mexico Department of Health  
*Tubal Ligation Sterilization Surgical Procedures* \$67,520  
 Society of Family Planning  
*Post Fellowship Salary Support* \$49,664



**Peter Jeppson**

MedStar Health Research Institute, Inc.  
*Protocol: Treatment of Refractory Overactive  
 Bladder With Onabotulinumtoxin A*  
 vs. PTNS \$750

**Yuko Komesu**

Eunice Kennedy Shriver National Institute  
 of Child Health and Human Development  
*Innovations in Treatments for Pelvic Floor  
 Disorders: A Southwestern PFDN*  
 Site \$18,180  
 Eunice Kennedy Shriver National  
 Institute of Child Health and Human  
 Development  
*Innovations in Treatments for Pelvic Floor  
 Disorders: PFDN Center Grant -*  
*Continuation* \$18,180

**Brenda Pereda**

Society of Family Planning  
*RH ECHO - El Salvador* \$25,000

**Office of the Medical Investigator****Heather Jarrell**

National Institute of Justice  
*Evaluation of Homicidal Pediatric Blunt Head  
 Injury* \$598,631

**Hannah Kastenbaum**

New Mexico Public Safety Department  
*2017-2018 Paul Coverdell TOX* \$31,290  
 New Mexico Department of Health  
*New Mexico Violent Death Reporting System*  
*FY18* \$5,275  
 The Forensic Sciences Foundation, Inc.  
*Validation of a Urine Drug Screen Assay in*  
*the Postmortem Setting* \$1,000

**Sarah Lathrop**

New Mexico Department of Health  
*Opioid Mortality Surveillance (Increase*  
*Funding Y2 & Y3)* \$67,089

**Kurt Nolte**

Bureau of Indian Affairs  
*Autopsy Services* \$226,768  
 New Mexico High-Intensity Drug  
 Trafficking Areas Program  
*Promote the Collaboration of Public Health*  
*and Public Safety* \$125,000  
 U.S. Department of Veterans Affairs  
*VA Non-Forensic Autopsy Service* \$29,149  
 Eastern New Mexico Medical Center  
*FY17 Autopsy Services* \$25,000  
 Eastern New Mexico Medical Center  
*FY16 Autopsy Services* \$25,000



Eastern New Mexico Medical Center  
*FY18 Autopsy Services* \$25,000  
 U.S. Attorney's Office  
*FY18 Expert Witness Agreements* \$15,000

**Lori Proe**

New Mexico Crime Victims Reparation  
 Commission  
*OMI Grief Services Federal* \$104,643  
 New Mexico Department of Health  
*FY18 New Mexico Sudden Unexpected*  
*Infant Death* \$23,210

**Veena Singh**

New Mexico Department of Health  
*FY18 Infectious Disease (Public Health*  
*Preparedness & Response for*  
*Bioterrorism)* \$40,000

**Orthopaedics****Marybeth Barkocy**

University of Oklahoma  
*BAA-Special Education Research and*  
*Innovation to Improve Services and*  
*Results - Continuation* \$4,120

**Thomas Decoster**

DePuy Orthopaedics, Inc.  
*Synthes Depuy Trauma Fellow*  
*Travel* \$1,956  
 Synthes, Inc.  
*2018 OTA Fellows Course* \$1,648

**Rick Gehlert**

Bonesupport  
*Clinical Trial of CERAMENT As Part of*  
*Surgical Repair of Open Diaphyseal Tibial*  
*Fractures* \$155,190

**Dustin Richter**

Aesculap Biologics  
*A Phase 3 Prospective, Randomized, Partially*  
*Blinded Multi-Center Study to Measure the*  
*Safety and Efficacy of NOVOCART® 3d,*  
*Compared to Microfracture in the Treatment*  
*of Articular Cartilage Defects* \$211,475

**Christina Salas**

New Mexico Institute of Mining &  
 Technology  
*3D Hand Software Funding From*  
*New Mexico Tech* \$5,076  
 American Foundation for Surgery  
 of the Hand  
*Hybrid 3D Bioprinting/  
 Electrospinning* \$5,000

**Robert Schenck**

University of Pittsburgh  
*Surgical Timing and Rehabilitation*  
*for Multiple-Ligament Knee Injuries:*  
*A Multicenter Integrated Clinical*  
*Trial* \$15,859

**Gehron Treme**

Stryker Orthopaedics  
*Stryker Educational Grant OTA* \$9,807  
 Medical Device Business Services, Inc.  
*DePuy Synthes AO Tuition/travel Grant*  
*Course* \$4,000  
 Stryker Orthopaedics  
*Stryker Educational Grant* \$2,029  
 Stryker Orthopaedics  
*Stryker Travel Grant AAHS* \$1,575

**Daniel Wascher**

Smith & Nephew, Inc.  
*Orthopaedics Sports Fellowship* \$12,000

## Pathology

### Alexandre Chigaev

Gilead Sciences  
Gilead Sciences Inc. Speaker  
Agreement - Continuation \$1,000

### Douglas Clark

TriCore Reference Laboratories  
Medical Director and Professional  
Services \$2,605,803  
New Mexico Human Services Department  
New Mexico HSD With BAA \$90,000  
Becton, Dickinson and Company  
Cytology-Free POC Cervical Cancer  
Diagnostics for Global Health \$7,387

### Kendall Crookston

Blood Systems Foundation  
Transfusion Medicine Fellowship \$100,116

### Bruce Edwards

University of Connecticut  
Developing a Screening Campaign for  
Immune Enhancers \$151,500

### Tracy George

TriCore Reference Laboratories  
Professional Services Agreement Between  
Regents of the University of New Mexico  
and TriCore Reference Laboratories/  
Celgene \$144,500

### Jennifer Gillette

National Institutes of Health  
Functional Role of Tetraspanin CD82 in  
Hematopoietic Stem Cell  
Interaction \$371,175

National Cancer Institute  
The Impact of CD82 Expression on Acute  
Myeloid Leukemia Chemosensitivity  
and Disease Relapse \$32,904

National Institutes of Health  
Functional Role of Tetraspanin CD82 in  
Hematopoietic Stem Cell Interaction -  
Non-Specific Supplement \$7,575

### Diane Lidke

Carnegie Mellon University  
Fluorogen-Activating Peptide-Based  
FRET to Quantify Fc $\epsilon$ 1 Activation  
Mechanisms \$109,962

Carnegie Mellon University  
Fluorogen-Activating Peptide-Based  
FRET - Specific Supplement \$10,843

### Aaron Neumann

National Institutes of Health  
Nano and Microscale Molecular Machines  
for Innate Immune Sensing of  
Candida \$360,399

## Samuel Reynolds

TriCore Reference Laboratories  
PSA TriCore/Roche/HPV \$7,643

TriCore Reference Laboratories  
PSA TriCore/Roche\_revised \$568

### Larry Sklar

University of Miami  
Illuminating the Druggable Genome  
Resource Dissemination and Outreach  
Center \$255,000

Gilead Sciences  
Evaluation of Novel Probes \$80,965

Gilead Sciences  
Gilead Sciences Inc. Speaker Agreement -  
Continuation \$2,000

### Mara Steinkamp

Phi Beta Psi Charity Trust  
Preclinical Testing of Anti-erbB2 Therapies to  
Target Ovarian Cancer Spheroids \$58,333

### Angela Wandinger-Ness

National Institute of General Medical  
Sciences  
Academic Science Education and Research  
Training \$873,496

National Institutes of Health  
Ketorolac and Related NSayss for  
Targeting Rho-Family GTPases in  
Ovarian Cancer \$272,700

National Center for Advancing  
Translational Sciences  
Ketorolac and Related NSayss for  
Targeting Rho-Family GTPases in  
Ovarian Cancer \$30,300

### Cosette Wheeler

National Institute of Allergy and Infectious  
Diseases  
Epidemiology and Prevention Interdisciplinary  
Center for Sexually Transmitted Infections -  
Continuation \$2,319,395

Roche Molecular Systems, Inc.  
Automated HPV Genotyping \$4,620

### Carla Wilson

TriCore Reference Laboratories  
PSA TriCore/Pixel \$6,200

### Stephen Young

DNA Electronics  
Protocol 22-0001-01: Sample Acquisition  
Study to Evaluate the DNA Electronics  
Inc Pathogen Capture System and DNae  
Group Holdings Genalysis System (LIDIA  
Bloodstream Infection Test) \$129,550

## Pediatrics

### Shirley Abraham

Oregon Health & Science University  
Regional Hemophilia Network-Mountain  
States \$34,250

Oregon Health & Science University  
Community Counts \$24,062

Oregon Health & Science University  
Community Counts \$22,858

American Thrombosis and Hemostasis  
Network  
ATHN Data Quality Counts:  
Round 9.1 \$17,500

### Tanya Baker-McCue

New Mexico Division of Vocational  
Rehabilitation  
DVR Project Search \$500,000

New Mexico Division of Vocational  
Rehabilitation  
DVR Partners for Employment \$410,000

New Mexico Developmental Disabilities  
Planning Council  
Information Network \$160,000

New Mexico Developmental Disabilities  
Planning Council  
School-to-Work Transition \$20,000

### Kirsten Bennett

Alliance for Early Success  
Early Success-New Mexico \$30,500

Symserve  
Home Visiting Database  
Improvement \$17,656

Molina Healthcare of New Mexico  
Funding to Decrease Unnecessary Infant  
Transports for Infants With Confirmed  
Prenatal Opiate Exposure \$10,000

### Sophie Bertrand

New Mexico Children, Youth & Family  
Department  
HVT Training, Consultation, Level 2, ELG  
and RTT Focus \$2,026,258

New Mexico Developmental Disabilities  
Planning Council  
DDPC Early Childhood Project \$5,000

### Koh Boayue

St. Baldrick's Foundation  
St. Baldrick's Infrastructure Development  
Grant \$60,000

Children's Hospital of Philadelphia  
Clinical Trial Phase 2 \$20,000



**Laura Caffey**

New Mexico Department of Health  
Summer Asthma Institute Project \$4,774

**Anthony Cahill**

Maternal and Child Health Bureau  
New Mexico Perinatal and Infant Oral Health  
Quality Improvement Project \$249,887

American Association on Health &  
Disability  
Project Accessibility USA: Health Promotion  
for Women With Disabilities \$2,700

American Association on Health &  
Disability  
Project Accessibility USA: Health Promotion  
for Women With Disabilities -  
Continuation \$2,000

**Glenda Canaca**

New Mexico Human Services Department  
Social Marketing \$431,070

**Ricardo Castillo**

Nutrinia  
Efficacy and Safety of NTRA-9620 in Infants  
With Short Bowel Syndrome Following  
Surgical Resection \$2,500

**Loretta Cordova de Ortega**

Bernalillo County  
Professional Service Agreement \$600,000

Ben Archer Health Center, Inc.  
Professional Services \$25,000

Mountain View Regional Medical Center  
Pediatric Cardiac Studies  
(Auto-Renewal) \$25,000

Presbyterian Healthcare Services  
Pediatric Nephrology On-Call  
Services \$25,000

**Theresa Cruz**

New Mexico Human Services Department  
SNAP-Ed Evaluation \$175,763

Thornburg Foundation  
Implementing Systems Strategies  
for Increasing Home Visiting  
Referrals \$75,000

Presbyterian Healthcare Services  
REACH Evaluation \$65,000

Crownpoint Healthcare Facility  
MSPI Evaluation \$18,000

New Mexico Department of Health  
Safe Sleep \$10,000

Presbyterian Healthcare Services  
Mobile Food Market \$10,000

**Lea Davies**

Health Resources and Services  
Administration  
New Mexico Pediatric Pulmonary  
Center - Continuation \$340,000

Health Resources and Services  
Administration  
New Mexico Pediatric Pulmonary  
Center \$288,602

Cystic Fibrosis Foundation  
Cystic Fibrosis Center of New Mexico -  
CF Registry \$125,720

Cystic Fibrosis Foundation  
Cystic Fibrosis Center of New Mexico -  
CF Registry \$64,060

Centers for Disease Control and  
Prevention  
Prevention Research Center Core &  
Village Interventions and Venues for  
Activity II \$386,101

Centers for Disease Control and  
Prevention  
Prevention Research Center Core &  
Village Interventions and Venues for  
Activity II \$347,899

Centers for Disease Control and  
Prevention  
NOPREN - Early Childcare Settings Serving  
Southwest American Indians and Hispanic  
Populations \$80,000

New Mexico Department of Health  
Implementing Evidence-Based  
Recommendations in Community  
Projects \$10,128

**Sara del Campo de Gonzalez**

Blue Cross Blue Shield of New Mexico  
Care Van Program Agreement \$10,000

**Tara Lynn DuPont**

New Mexico Department of Health  
Developmental Care Continuity Program -  
Fee for Service \$118,000

New Mexico Department of Health  
Developmental Care Continuity  
Program \$70,640

**Sandra Heimerl**

Association of University Centers on  
Disabilities  
Focused Assistance to Support Training  
Project \$8,000

New Mexico Developmental Disabilities  
Planning Council  
New Mexico LEND Legislative Advocacy  
Workshop \$2,500

**Andrew Hsi**

New Mexico Department of Health  
DDSD FIT (FOCUS) \$66,000

New Mexico Department of Health  
DDSD FIT (FOCUS) \$20,000

**Lauren Jantzie**

National Institutes of Health  
Placental-Mediated Mechanisms of Perinatal  
Brain Injury \$378,750

American Heart Association  
Neural Immune Dysregulation in Perinatal  
Hypoxia-Ischemia \$77,000

**Elizabeth Yakes Jimenez**

Academy of Nutrition and Dietetics  
Position of Director of the Dietitians Practice-  
Based Research Network \$80,400

**Patricia Keane**

New Mexico Human Services Department  
CHILE Plus \$344,070

**Alberta Kong**

New Mexico Department of Health  
The Newborn Hearing Screening Program  
Quality Improvement \$60,000

New Mexico Department of Health  
ECEP MOA \$30,000

New Mexico Department of Health  
Piloting Effectiveness of the Low-  
Literacy Pictorial Asthma Action Plan  
FY18UNM030056 \$25,320

Alutiiq Management Services  
Medical Services Provided at Albuquerque  
Job Corps Center W/BAA \$19,344

United Healthcare of New Mexico, Inc.  
Optimizing Care for Neonates With Opiate  
Withdrawal Syndrome Initiative. \$10,000

New Mexico Highlands University  
Envision New Mexico Adolescent Health  
Social Work Workforce Training  
Initiative \$6,700

### John Kuttesch

Children's Hospital of Philadelphia  
St. Baldrick's Foundation Support: Health  
Effects After Anthracycline and Radiation  
Therapy - Dexazoxane and Prevention of  
Anthracycline-Related Cardiomyopathy  
(ALTE11C2 - Study) \$75,350

Children's Hospital of Philadelphia  
Health Effects After Anthracycline  
and Radiation Therapy - Dexazoxane and  
Prevention of Anthracycline-  
Related Cardiomyopathy  
(ALTE11C2 Study) (R01) \$11,150

Children's Hospital of Philadelphia  
EVERYCHILD (APEC4B1) PCR - COG  
Foundation \$10,000

Children's Hospital of Philadelphia  
Per Case Reimbursement Clinical Rider-  
industry Work Order, PH II, PH+ALL -  
Specific Supplement \$10,000

Children's Hospital of Philadelphia  
Protocol: ANHL1131: Clinical Study  
Agreement (F. Hoffman-la Roche)  
(Supplement) \$7,000

Children's Hospital of Philadelphia  
Clinical Trial - Non-Industry - Specific  
Supplement \$5,000

Children's Hospital of Philadelphia  
Clinical Study Protocol AALL0434 -  
Novartis Pharmaceuticals Corporation  
(Industry) \$5,000

Children's Hospital of Philadelphia  
Clinical Trial Phase 3 - Industry Flow  
Through Non-Profit \$4,500

Children's Hospital of Philadelphia  
Clinical Trial Phase 3 - Federal Flow  
Through Non-Profit \$4,002

### Jean Lowe

University of California, San Francisco  
High-Dose Erythropoietin for Asphyxia  
and Enciphalopathy CCC Project \$18,030

University of Washington  
Preterm Epo Neuroprotection Trial  
CCC (Capitation) \$11,513

University of California, San Francisco  
High-Dose Erythropoietin for Asphyxia  
and Enciphalopathy CCC Project -  
Continuation \$3,030

### Jodi Mayfield

New Mexico Department of Health  
Camp Enchantment 2018 & 2019 \$37,980



### Jane McGrath

J.F. Maddox Foundation  
LARC Mentoring Program \$150,000

Brindle Foundation  
LARC Mentoring Program \$50,000

Thornburg Foundation  
LARC Mentoring Program \$50,000

Apex Education  
STD Screening and Assessment Tools  
for an Adolescent Population \$15,000

### Marcia Moriarta

New Mexico Department of Health  
Autism Programs \$2,764,040

New Mexico Human Services  
Department  
Improving Quality (75/25 & 50/50  
Medicaid Match) Supporting Child  
Development Thru Evidence-Based  
Practices (FY18) \$2,000,000

New Mexico Children, Youth & Family  
Department  
ACA-Nurse Family Partnership \$1,886,532

New Mexico Department of Health  
Early Childhood Evaluation Program  
SGF/Part B/Part C \$1,239,750

Administration for Community Living  
University Center for Excellence in  
Developmental Disabilities -  
Continuation \$570,000

Administration for Community Living  
University Center for Excellence in  
Developmental Disabilities \$547,000

New Mexico Department of Health  
DDSD Partners for Employment \$546,236

New Mexico Department of Health  
Race to the Top Early Learning Challenge  
Project - Continuation \$486,000

New Mexico Department of Health  
Early Childhood Network \$467,900

New Mexico Department of Health  
Race to the Top Early Learning Challenge  
Project \$350,000

New Mexico Children, Youth & Family  
Department

Infant Mental Health Team \$300,000

Falling Colors Corporation  
Early Childhood Infrastructure  
Development (FY18) \$215,471

New Mexico Department of Health  
New Mexico Home- and Community-  
Based Services Statewide Transition  
Plan Project \$175,000

New Mexico Department of Health  
DDSD Statewide Training Database \$111,607

New Mexico Department of Health  
BAA/Project SET \$106,191

New Mexico Department of Health  
Informed Choice \$100,000

Falling Colors Corporation  
Infant-Parent Psychotherapy  
(FY18) - BAA \$93,000

New Mexico Department of Health  
Medically Fragile Case  
Management \$76,000

New Mexico Department of Health  
New Mexico SAFE \$73,437

Falling Colors Corporation  
Infant Mental Health Community of  
Practice \$70,000

New Mexico Department of Health  
Children's Medical Services Evaluation  
Project \$60,000

Falling Colors Corporation  
Infant-Parent Psychotherapy (FY18  
Supplement) - BAA \$20,000

New Mexico Department of Health  
Autism Programs - Specific Supplement FY18  
\$20,000

### Sylvia Negrete

Kohl's Cares LLC  
Kohl's Care Hospital Program \$100,000

Rhythm Pharmaceuticals  
Protocol RM493013: Genetic Testing  
of Severely Obese Pediatric and Adult  
Volunteers \$38,400



**Robin Ohls**

National Heart, Lung, and Blood Institute  
*DARBE - Continuation* \$436,233

University of Washington  
*Preterm Erythropoietin Neuroprotection Trial* \$32,966

University of Washington  
*Preterm Epo Neuroprotection Trial Capitation for Year 5* \$6,917

**Pat Osbourn**

New Mexico Public Education Department  
*PED Pre-K Consultation* \$653,480

New Mexico Public Education Department  
*PED Pre-K Consultation* \$588,136

New Mexico Public Education Department  
*PED Contract - SET, DB, PSN* \$580,000

New Mexico Public Education Department  
*FOCUS Preschool Special Education* \$564,425

New Mexico Public Education Department  
*PED Pre-K Race to the Top Early Learning Challenge (FOCUS TQRIS)* \$353,907

New Mexico Public Education Department  
*PED Pre-K Consultation* \$309,220

U.S. Department of Education  
*Project for New Mexico Children Who Are Deaf-Blind* \$100,912

New Mexico Developmental Disabilities Planning Council  
*Partners in Policymaking* \$67,000

New Mexico Developmental Disabilities Planning Council  
*Partners in Policymaking* \$62,000

Rio Rancho Public Schools  
*Rio Rancho Public School Consultations* \$50,768

Roswell Independent Schools  
*Roswell Consultations* \$14,281

Albuquerque Public Schools  
*APS Consultations* \$11,033

Belen Consolidated Schools  
*Belen Consultations* \$10,765

Aztec Municipal School District  
*Aztec Consultation* \$7,513

Bernalillo Public Schools  
*Bernalillo Consultations w/BAA* \$6,250

Bernalillo Public Schools  
*Bernalillo Consultations* \$6,250

Moriarty-Edgewood School District  
*Moriarty Edgewood Consultations* \$5,664

Silver Consolidated Schools  
*Silver Consolidated Schools Consultations - Continuation* \$4,976

**Lucille Papile**

Stanford University  
*The WISER Study* \$11,986

**Linda Penaloza**

New Mexico Department of Health  
*YRRS - Non-Specific Supplement* \$130,000

New Mexico Public Education Department  
*PED Evaluation* \$82,482

New Mexico Department of Health  
*YRRS* \$62,700

New Mexico Public Education Department  
*PED Evaluation - Specific Supplement* \$13,000

**Janet Poole**

Rheumatology Research Foundation  
*Rheumatology Foundation Medical & Graduate Student Preceptorship* \$1,000

**Hengameh Raissy**

AstraZeneca Pharmaceuticals, LP  
*Protocol D3250c00045: Multicenter, Randomized, Double-Blind, Par of Benralizumab Group, Placebo-Controlled, Phase3b Study to Evaluate the Safety and Efficacy of 30mg Sc in Patients With Severe Asthma Uncontrolled on Standard of Care Treatment* \$51,200

Celtaxsys  
*Clinical Trial Agreement - Phase 2* \$47,120

Savara Pharmaceutical  
*Phase 3, Randomized, Double-Blind, Placebo-Controlled Study of Aerovanc for the Treatment of Persistent Methicillin-Resistant Staphylococcus Aureus Lung Infection in Cystic Fibrosis Patients* \$23,251

Vertex Pharmaceuticals Incorporated  
*A Phase 1/2 Study of VX-445 in Healthy Subjects and Subjects With Cystic Fibrosis* \$17,999

Vertex Pharmaceuticals Incorporated  
*VX16-809-120: A Post-Approval Observational Study to Evaluate the Long-Term Effectiveness and Safety of Orkambi in U.S. Patients Who Completed Study VX12-809-105 Part a* \$12,800

Institute for Advanced Clinical Trials for Children  
*I-ACT for Children* \$7,500

University of Utah  
*Multicenter Validation of Predictive Sputum Biomarkers in CF* \$2,000

**Mary Ramos**

New Mexico Department of Health  
*The Healthy Hospitals Initiative Project* \$79,627

Pacific Institute for Research & Evaluation  
*Implementing School Nursing Strategies to Reduce LGBTQ Adolescent Suicide - Continuation* \$43,681

New Mexico Department of Health  
*Advancing Asthma Care in UNM and School-Based Health Centers Project S* \$27,430

New Mexico Department of Health  
*Advancing Asthma Care in UNM and School-Based Health Centes Project - Specific Supplement* \$18,990

Pacific Institute for Research & Evaluation  
*Implementing School Nursing Strategies to Reduce LGBTQ Adolescent Suicide* \$5,000

**Amy Staples**

University of Michigan  
*Nephcare Accelerating Cures: Start-Up and Training* \$600

**Leslie Strickler**

New Mexico Department of Health  
*Para Los Niños (New Mexico)* \$352,620

New Mexico Crime Victims Reparation Commission  
*Adolescent Continuity Clinic for Education on Self Safety* \$72,064

New Mexico Crime Victims Reparation Commission  
*Para Los Niños Wish List* \$10,803

U.S. Department of Justice  
*Expert Witness Contract* \$6,550

**Monique Vallabhan**

Health Resources and Services Administration  
*Telehealth Network Grant* \$299,999

**Jennifer Ann Vickers**

New Mexico Department of Health  
*BAA/Developmental Disabilities Waiver Outside Review Project* \$1,401,100

New Mexico Department of Health  
*Continuum of Care* \$808,800

New Mexico Department of Health  
*BAA/Developmental Disabilities Waiver Outside Review Project - Non-Specific Supplement* \$97,158

New Mexico Department of Health  
*Continuum of Care Mortality Review Project* \$52,750

**Kristi Watterberg**

Eunice Kennedy Shriver National Institute of Child Health and Human Development  
*NICHD Cooperative Multicenter Neonatal Network - Continuation* \$249,327

RTI International  
*NICHD Neonatal Research Network - Capitation* \$159,027

RTI International  
*NICHD Cooperative Multicenter Neonatal Research Network: Darbe #U01HL136306 and HYBRiD #U24HL137729* \$104,968

Eunice Kennedy Shriver National Institute of Child Health and Human Development  
*NICHD Cooperative Multicenter Neonatal Network - Non-Specific Supplement* \$27,701

**Craig Wong**

Alexion Pharmaceuticals, Inc.  
*Single-Arm Study of ALX1210 in Complement Inhibitor Treatment-Naïve Adult and Adolescent Patients With Atypical Hemolytic Uremic Syndrome* \$25,600

Quintiles Laboratories  
*ALXN1210 in Complement Inhibitor Treatment-Naïve Adult and Adolescent Patients With Atypical Hemolytic Uremic Syndrome* \$25,600

Presbyterian Healthcare Services  
*On-Call Pediatric Nephrology Services* \$25,000

The Children's Mercy Hospital  
*Chronic Kidney Disease in Children (CKiDIII) (Steering Committee)* \$19,266

Nationwide Children's Hospital  
*Cure Glomerulonephropathy* \$15,500

The Children's Mercy Hospital  
*Chronic Kidney Disease in Children (CKiDIII)(Clinical)* \$12,000

**Elizabeth Yakes Jimenez**

FHI Solutions  
*Review of Draft Intake Reference Guide for Quantitative 24-Hour Dietary Intake Surveys and Participation* \$5,012

**Psychiatry & Behavioral Sciences****Christopher Abbott**

National Institutes of Health  
*ECT Current Amplitude and Medial Temporal Lobe Engagement* \$512,052

Mind Research Network  
*Project 5-Abbott-Multimodal Imaging of Neuropsychiatric Disorders: Mechanisms & Biomarkers (COBRE II)* \$207,191

**Deborah Altschul**

San Felipe Pueblo  
*KEYWAH II - Kathishya Embraces Youth, Wellness, and Hope* \$117,384

San Felipe Pueblo  
*KEYWAH II - Specific Supplement - Kathishya Embraces Youth, Wellness, and Hope* \$109,000

WK Kellogg Foundation  
*WKKF New Mexico Education Poll* \$67,880

Taos Pueblo Division of Health and Community Services  
*Taos Pueblo Tiwa Babies Program* \$60,000

Falling Colors Corporation  
*Multi-Systemic Therapy Data Reporting Initiative* \$31,400

**Jeanne Bereiter**

Falling Colors Corporation  
*BHSD New Mexico Suicide Prevention* \$49,183

**Caroline Bonham**

Indian Health Service  
*IHS-IAA Tele-Behavioral Health Center for Excellence MOU* \$838,250

New Mexico Behavioral Health Collaborative  
*EARLY Clinic -Supplement* \$52,059

JBS International, Inc.  
*JBS Trainings* \$14,000

Educational & Training Consultants, LLC  
*HELPIng BC-SCORES Training* \$2,990

**Juan Bustillo**

Mind Research Network  
*ACAM-Bustillo-Multimodal Imaging of Neuropsychiatric Disorders: Mechanisms & Biomarkers (COBRE II)* \$320,462

Mind Research Network  
*A Multidimensional Approach for Cognitive Control Deficits in Psychopathology* \$34,515

Janssen Scientific Affairs, LLC  
*Clinical Trial Agreement - Phase 3* \$675

**Annette Crisanti**

Falling Colors Corporation  
*Reducing Homelessness (HHRHI) SFY18* \$259,936

Falling Colors Corporation  
*Reducing Homelessness (HHRHI) SFY19* \$65,174

American Psychological Association  
*APA Fellowship - Alonso-Marsden* \$49,484

**Martha Faulkner**

National Institute on Drug Abuse  
*NIMH Outreach Partnership Program FY19* \$7,500

**Paula Hensley**

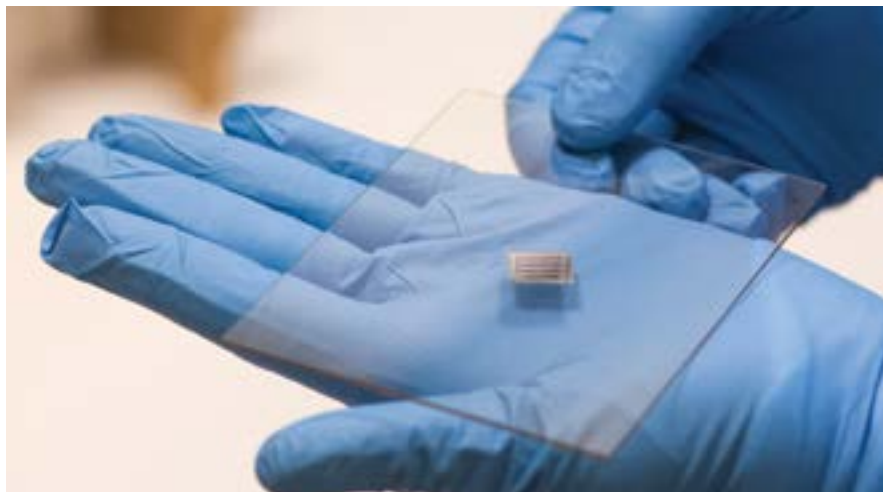
INNO Clinical Outcomes, LLC  
*Clinical Trial - Phase 2* \$55,534

**Brian Isakson**

Substance Abuse and Mental Health Services Administration  
*ACTION II - Addressing Childhood Trauma Through Intervention, Outreach, and Networking* \$399,999

Substance Abuse and Mental Health Services Administration  
*ACTION II - Addressing Childhood Trauma Through Intervention, Outreach, and Networking* \$399,924

Substance Abuse and Mental Health Services Administration  
*COPE Primary Care Integration - Continuation* \$398,778





**Avron Kriechman**

New Mexico Department of Health  
Alliance-Building for Suicide Prevention and  
Youth Resilience \$600,000

**Davin Quinn**

U.S. Department of Defense  
High-Definition Transcranial Direct Current  
Stimulation for Sensory Deficits in Complex  
Traumatic Brain Injury \$3,076,212

**Julie Salvador**

New Mexico Behavioral Health  
Collaborative

New Mexico State Targeted Response  
Opioid Initiative - Year 2 \$1,450,542

State of New Mexico  
New Mexico State Targeted Response  
Opioid Initiative \$920,456

Agency for Healthcare Research and  
Quality

Innovative Model for Increasing  
MAT Access \$396,955

University of Nevada, Las Vegas  
Expansion of MAT for OUD in Rural Primary  
Care: ECHO Model Approach \$65,102

New Mexico Children, Youth & Family  
Department  
Community of Care Expansion Grant  
(CYFD COC Expansion), With  
BAA - FY 19 \$50,433

**Robert Thoma**

Mind Research Network  
Project 4- Thoma-Multimodal Imaging of  
Neuropsychiatric Disorders: Mechanisms &  
Biomarkers (COBRE II) \$53,999

Mind Research Network  
Project 4- Thoma-Multimodal Imaging of  
Neuropsychiatric Disorders: Mechanisms &  
Biomarkers (COBRE II) \$53,998

Westat  
EARLY Clinic Evaluation by  
Westat \$10,000

**Mauricio Tohen**

Bernalillo County  
Psychiatric Services \$84,939

First Choice Community Healthcare  
Professional Services \$25,000

The Peak at Santa Teresa, Inc.  
Professional Services \$25,000

Saint John's Health Center  
Medical Director Services \$14,976

**Ann Waldorf**

Falling Colors Corporation  
New Mexico Screening, Brief Intervention  
and Referral to Treatment Supplement  
12 Months \$50,000

Falling Colors Corporation  
New Mexico Screening, Brief Intervention and  
Referral to Treatment Supplement  
12 Months - Supplement - FY19 Final  
Month \$4,167

**Radiology****Christopher Gutjahr**

Medtronic  
IN.PACT AV Access Randomized Study  
of in.pact AV Access Paclitaxel-Coated  
Percutaneous Transluminal Angioplasty  
Balloon vs. Standard PTA for the Treatment  
of Obstructive Lesions in the Native  
Arteriovenous Dialysis Fistulae \$81,274

**Gary Mlady**

U.S. Department of Veterans Affairs  
Provide Radiological and Nuclear Medicine  
Diagnostics and Therapy Services for New  
Mexico VAHSC FY19 \$3,050,229

New Mexico Department of Health  
BCC Early Detection Program \$107,600

New Mexico Department of Health  
BCC Early Detection Program -  
Non-Specific Supplement \$30,600

**Reed Selwyn**

X-Ray Associates of New Mexico  
Medical Physicist Services \$55,000

**Surgery****Arup Das**

International Retinal Research Foundation  
Role of Pericytes in BRB Alteration in Diabetic  
Retinopathy \$200,000

New Mexico Commission for the Blind  
PSA-10-23-FY18 Commission for the Blind -  
Emergency Eye Care Program \$125,000

New Mexico VA Health Care System  
IPA Finny Monickaraj Swamidos  
2018-2019 \$53,106

U.S. Department of Veterans Affairs  
IPA- Finny Swamidoss \$13,171

**Dusanka Deretic**

National Institutes of Health  
Rhodopsin Trafficking and Photoreceptor  
Membrane Renewal -  
Continuation \$340,875

National Institutes of Health  
Rhodopsin Trafficking and Photoreceptor  
Membrane Renewal - Non-specific  
Supplement \$37,875

**Karen Hawley**

University of Utah  
A Randomized Trial to Determine the  
Role of Valganciclovir for Asymptomatic  
Cytomegalovirus Infected Hearing  
Impaired Infants \$405,196

University of Utah  
A Randomized Trial to Determine the  
Role of Valganciclovir for Asymptomatic  
Cytomegalovirus Infected Hearing Impaired  
Infants - Specific Supplement \$1,845

**John Marek**

W.L. Gore & Associates  
Vascular Surgery Support  
Program \$4,000

W.L. Gore & Associates  
Vascular Surgery Support Program -  
Continuation \$4,000

**Linda Rose**

U.S. Attorney's Office  
Expert Witness LRose -AC \$18,874

**Joaquin Tosi**

Genentech, Inc.  
Protocol GX28228: a Phase 2 Study of the  
Efficacy and Safety of the Ranibizumab Port  
Delivery System for Sustained Delivery of  
Ranibizumab in Patients With Subfoveal  
Neovascular Age-Related Macular  
Degeneration \$678,630

**UNM Hospital****Wendy Hine**

New Mexico Department of Health  
Provide Services for the Breast and Cervical  
Cancer Early Detection Program, Screening  
Services Case Manager Project \$85,000

**Rodney McNease**

City of Albuquerque  
Assertive Community Treatment  
Program \$713,330

City of Albuquerque  
Assertive Community Treatment  
Program FY19 \$713,300

Bernalillo County  
Provide Housing to Homeless in Criminal  
Justice System \$46,137

Indian Health Service  
Inpatient Psychiatric Hospital Services  
to IHS Beneficiaries A4 \$25,000

Albuquerque Public Schools  
*Behavioral Health Assessment &  
Treatment for Students* \$10,000

**Robert Perry**

New Mexico Department of Health  
*New Mexico Regional Healthcare  
Coalition Cache Project* \$37,500

New Mexico Department of Health  
*Provide Services for Hospital  
Preparedness* \$30,000

**Suzanne Popejoy**

Bernalillo County  
*Adverse Childhood Experiences* \$614,804

State of New Mexico  
*UNMH Young Children Health  
Center* \$482,000

City of Albuquerque  
*Primary Care/MSW Services  
Program* \$161,970

City of Albuquerque  
*Early Intervention for Children  
Services* \$141,503

Region IX Education Cooperative  
*Home Visits* \$143

**Michael Richards**

New Mexico Children, Youth & Family  
Department  
*Pathology Clinical Services -  
Supplement* \$400,000

**John Russell**

Presbyterian Medical Services  
*Otolaryngology and Oral Maxillofacial  
Surgery On-Call Services* \$98,271

**Doris Tinagero**

City of Albuquerque  
*Gang Prevention Program* \$239,378

City of Albuquerque  
*Gang Prevention FY19* \$239,378

City of Albuquerque  
*Primary Care/MSW Services  
Program FY18* \$161,970

**UNM Sandoval Regional  
Medical Center**

**Darlene Fernandez**

New Mexico Department of Health  
*Provide Services for the DOH* \$45,000

**A. Robb McLean**

ABQ Health Partners, LLC  
*Cardiology On-Call Coverage  
for SRMC* \$50,000

**UNM Medical Group, Inc.**

**Darren Braude**

Bernalillo County Fire Department  
*Medical Directorship* \$63,053

**Robert Fritch**

Indian Health Service  
*Professional Services Agreement  
A4* \$25,000

**A. Robb McLean**

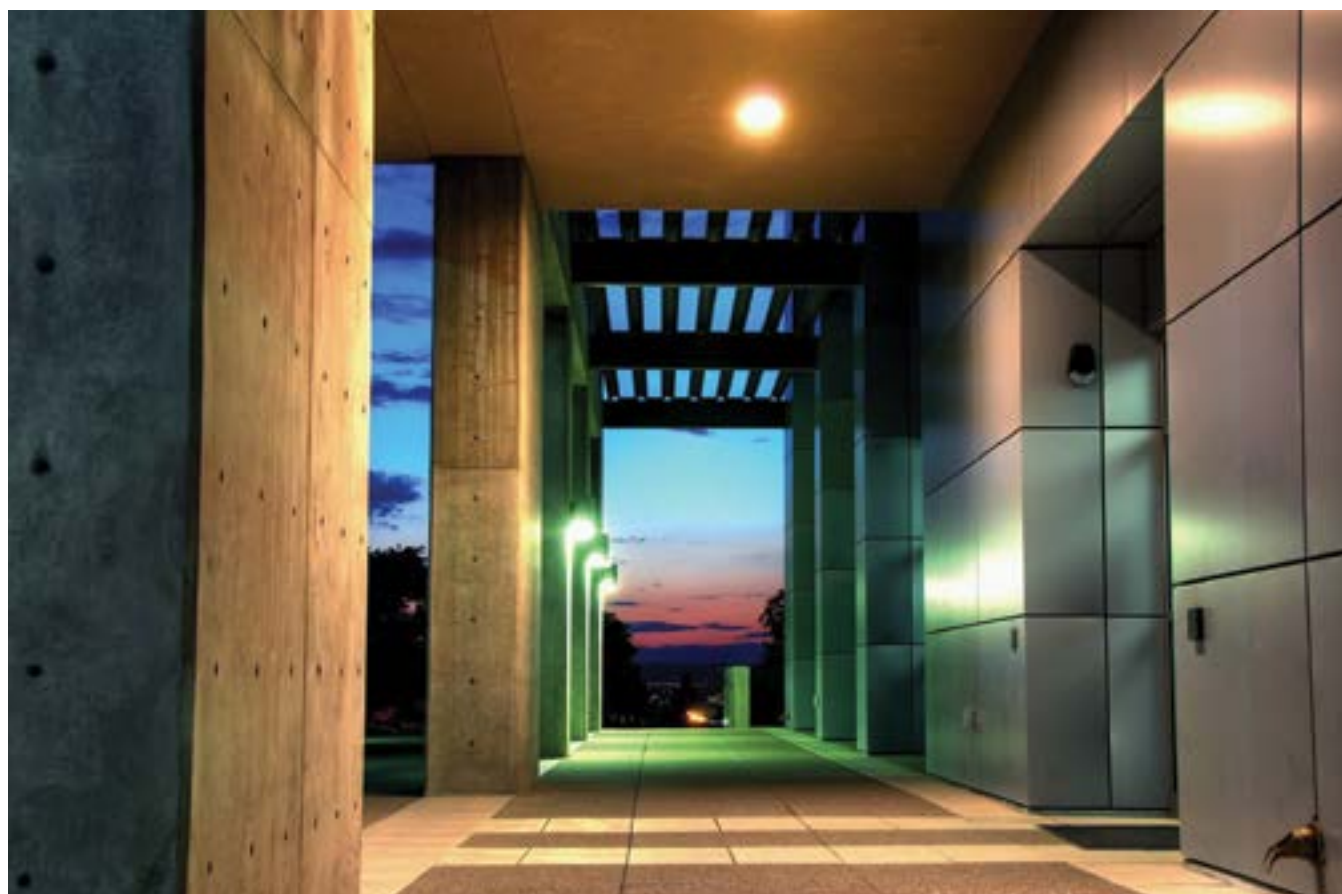
Albuquerque Area Indian Health Service  
*Professional Services Provided by UNM  
SRMC* \$25,000

**Steven (Bruce) Williams**

New Mexico Department of Health  
*HIV Services FY19* \$236,405

**Howard Yonas**

Gerald Champion Regional Medical Center  
*Master Hospital Agreement* \$25,000









## How to Donate to UNM Health Sciences Center Research

### *Join Us on Our Journey of Discovery*

Our research programs are focused on critical health problems affecting New Mexicans and bridging the gap to more rapidly deliver discoveries to the clinical setting. Often, the benefits of our innovations and discoveries are recognized and shared beyond our state borders to institutions in other states and in countries around the world.

Your contributions will help us meet new challenges and seek solutions to help people lead longer and healthier lives. Donations are accepted through the UNM Foundation, the university-based nonprofit that can accommodate almost any giving interest. Options include support of health research in general, work in a particular disease category, one of our signature programs for scholarships or facilities, or a legacy gift customized to fit the wishes of you as an individual, your family or your company.

For more information on how you can contribute to the UNM Health Sciences Center's discoveries and innovations of the future, contact Bill Uher, Vice President of Development, UNM Foundation, at [bill.uher@unmfund.org](mailto:bill.uher@unmfund.org) or 505-277-4078.

---

### **About the Foundation**

The University's Board of Regents established the UNM Foundation in 1979 as a nonprofit corporation. Ten years later, the Regents delegated the responsibility of overseeing the University of New Mexico assets and investments to the UNM Foundation Investment Committee. These assets total more than \$400 million today.

In 2008, the Foundation became a standalone organization with expanded fiduciary duties to include fiscal, human resources and treasury functions. All private gifts to the Health Sciences Center are received through the UNM Foundation, which manages contributions to all university programs. The Foundation's funding model ensures that 100 percent of gifts are directed to the donor's designated purpose.





OFFICE OF RESEARCH  
1 University of New Mexico  
MSC08-4560, Fitz Hall B-61  
Albuquerque NM 87131-0001

UNM HEALTH SCIENCES CENTER

# Discovery

Research Annual  
Report 2018

UNIVERSITY OF NEW MEXICO HEALTH SCIENCES CENTER  
**THE VALUE OF RESEARCH**

