

RESEARCH ANNUAL REPORT 2023

DISCOVERY

FACT FINDERS

The Health Sciences Library & Informatics Center Helps UNM Researchers Focus Their Studies



VISION

Transform health care and health science education and research to improve health and health equity for New Mexico and beyond.

MISSION

We exist to lead New Mexico toward health equity through our unique integration of care delivery, education, discovery and innovation and through advocacy and collaborations. We celebrate the diverse cultures and history of our state while creating an inclusive and compassionate community that makes UNM Health and Health Sciences an extraordinary place to study, work and serve.

CORE VALUES

HEALING: Both within individuals and among our communities in order to cultivate hope, care and joy.

EQUITY: For all New Mexicans in health, education and economic opportunity.

EXCELLENCE: In health care, education and research and in building a place where people seek to study, work and serve.

INNOVATION: In all aspects of our mission, enabling us to rise to the health, workforce and economic challenges of our time.

COMPASSION: In how we treat our patients, students, each other and ourselves.

SERVICE: Accountable to our diverse communities across New Mexico.

Managing Editor

Michael Haederle

Graphic Designer & Illustrator

Claire Hannon

Contributing Editors

Elizabeth Dwyer Sandlin

Nicole San Roman

Chris Ramirez

Brianna Wilson

Photographer

Jett Loe

Art Director

Sara Mota

Design Support

Sarah Head

© 2024 The University of New Mexico Health Sciences Office of Research

Special thanks to Aida Andujo, Jade Knight and James MacFarlane for their assistance

hsc.unm.edu/research

TABLE OF CONTENTS

LETTER FROM THE INTERIM VICE PRESIDENT FOR RESEARCH 02

FEATURED STORIES

Fact Finders: The Health Sciences Library & Informatics Center Helps UNM Researchers Focus Their Studies 04

Taking Their Best Shot: UNM Researchers Create Custom-Tailored Vaccines That They Hope Will Prevent or Treat Alzheimer’s Disease 08

Microplastics Make Their Way from the Gut to the Kidney, Liver and Brain, UNM Researchers Find 12

From Research to Practice: Applying Lessons From the Long COVID Study 18

Making Strides: UNM Women Scientists Are Advancing Core Knowledge in Molecular Genetics & Microbiology 18

Pathways to Discovery: UNM Health Sciences Researchers Are Finding New Solutions for Stubborn Health Problems 20

Patents & Inventions 22

2023 TRAINING GRANTS 24

2023 EXCELLENCE IN RESEARCH AWARDS 32

RESEARCH 2023 CENTER LISTING 34

CONTRACTS AND GRANTS 35



From the

INTERIM VICE PRESIDENT FOR RESEARCH

I am very pleased to report that The University of New Mexico Health Sciences has once again surpassed itself, achieving a record \$243 million in extramural funding for FY 2023. Our dedicated researchers have been actively engaged in pushing the boundaries of knowledge and innovation across a spectrum of disciplines.

Our commitment to excellence and drive for innovation have positioned us to advance knowledge and improve health for people in New Mexico and beyond. This record of successful grant funding at UNM Health Sciences also has a significant impact on the state's economy, providing new jobs and leading to bioscience and biotechnology startups based on patented technology developed on our campus.

This year's report highlights a few of these activities to showcase the amazing work done at UNM Health Sciences.

I would like acknowledge and thank the New Mexico Legislature, which made Technology

Enhancement Funds available to the state's research community. The funds are intended to provide financial support and matching funds for research grants being submitted in order to make applications more competitive for funding. This is a very impactful initiative, and we are grateful for the support.

In early 2023, we finalized the UNM Health and Health Sciences Strategic Plan 2040. I am grateful to those who participated in various committees, subcommittees and townhalls, sharing their vision and input with us. We have identified 10 research objectives and many tactics to reach our short-term and long-term goals! It is indeed a very exciting time as we proceed with the implementation phase and prioritizing of new initiatives.

We continue to support the full spectrum of research - basic, clinical, community-based and population science. We are enhancing established critical areas of strength around substance use, health equity and environmental health.

Additionally, we are expanding our research capabilities, with focused energy toward key initiatives, including dissemination and implementation science to more rapidly and successfully bring evidence-based practices to clinical and community settings, as well as data science, AI and machine learning to catalyze innovation within an ever-evolving data landscape.

We are committed to impactful research, and together, we can achieve remarkable advancements that will shape the future of our state and beyond.

As I frequently remind us all, research brings hope and saves lives. I am fully confident that in the upcoming year, our research endeavors will significantly shape academia, industry and society as a whole.

Hengameh Raissy, PharmD
Interim Vice President for
Research, Health Sciences



FACT FINDERS

The Health Sciences Library & Informatics Center Helps UNM Researchers Focus Their Studies

By Michael Haederle

If it isn't already a proverb, it should be: Behind every great researcher is a great research librarian.

Nowhere is that truer than The University of New Mexico, where the Health Sciences Library & Informatics Center (HSLIC) is an invaluable resource for faculty, staff and student researchers.

"We do a lot of things to support research," says HSLIC Executive Director Melissa Rethlefsen, MSLS, AHIP. "One of them is providing collections that researchers need. That's a huge component of what we do and that's where the majority of our money goes."

But HSLIC faculty members also design sophisticated literature searches to help scientists define the right questions and conduct their research. They also provide training to help researchers comply with complex National Institutes of Health (NIH) data management policies, among other things.

Melissa Rethlefsen, MSLS, AHIP, UNM Health Sciences Library & Informatics Center Executive Director, and Tatsuya Norii



Part of Rethlefsen's own work is focused on ensuring that research is conducted according to sound principles.

She teaches undergraduate and graduate students about rigor and reproducibility. The NIH is concerned about the all-too-common phenomenon of published research results that can't be reproduced by others, she says. Lack of reproducibility can prove disastrous if subsequent research assumptions are derived from bad data.

"What I talk about is an overview of what the problem is and some of those factors leading up to a lack of reproducibility," Rethlefsen says. "At the NIH they know this has a lot of reasons behind it." These factors include poor study design, failure to use a large-enough sample size, choosing the wrong cell lines and using ineffective reagents.

Institutional culture and misaligned incentives can also contribute to the problem, she says.

"Researchers favor quantity over quality – so do institutions – and grant money over high-quality research," she says. "Breaking those cycles is part of the work we're trying to do."

Rethlefsen also presents at the "boot camp" for participants in the Initiative to Maximize Student

Development within the Biomedical Graduate Student Program, funded through an NIH T32 grant. "We teach them how to use the library, conduct good research and conduct literature searches," she says.

From time to time the NIH issues new standards for publishing grant-funded research, and failure to comply can result in funding being withdrawn, so HSLIC faculty members serve as an important resource to help researchers get on board, Rethlefsen says.

"There's a pretty big stick there," she says. "Researchers know that in order to comply they have to do things differently. People have been grateful that we've been here to help support them."

Rethlefsen provides additional training to postdoctoral fellows in the Academic Science Education & Research Training program on FAIR data principles for presenting data (the acronym stands for Findable, Accessible, Interoperable and Reproducible).

"The idea is that in order to make your data something people can actually build upon it needs to be searchable," she says. "It needs to have a digital object identifier to direct people to it and it needs to be in a format that people can read. It also needs to be something that machines can read as well as people can read."





HSLIC personnel are also helping Health Sciences researchers comply with the Nelson Memo, a 2002 directive issued by the White House Office of Science and Technology Policy that requires federal agencies to devise policies to make data and journal articles available to the public. In practice, that might take the form of a researcher paying a substantial fee to publish an open access article in a scientific journal.

“It’s a huge sea change in how researchers are going to behave,” Rethlefsen says.

Meanwhile, HSLIC data manager Lori Sloane has been educating research faculty members about the new NIH data management and sharing policy, which took effect in January 2023. “They gave plenty of warning, but people really weren’t paying attention,” Rethlefsen says. “That was something that we in the libraries were really, really concerned about.”

NIH now expects scientists to make all of the results of their NIH-funded research publicly available, even if it hasn’t been published in a journal paper. So now they must submit a data sharing plan with their grant applications that outlines how they’re going to manage their data, what kind of data they’re collecting, how it will be stored and for what duration.

“It’s a big deal,” Rethlefsen says, noting there are “thousands” of archives and repositories for storing data. “It’s a lot about figuring out for your research project where it should go. It was something that was totally new to most researchers. Lori played a huge role in helping people figure out where they are supposed to share their research.”

HSLIC faculty members often actively participate in Health Sciences research projects. Gale Hannigan, PhD, MPH, MLS, professor and research librarian, is partnering with several scientists and physicians to conduct systematic reviews – a comprehensive literature search to identify best evidence on a given topic.

“Systematic reviews have become kind of a big deal, in terms of the kinds of literature searches we’re doing,” Hannigan says. “A systematic review is usually a study of studies. The point is to collect everything that has addressed that topic, and then there is a procedure for a meta-analysis – a statistical analysis of the results, weighing things like the size of the study population and the degree of confidence in the outcome.”

These searches are conducted with an eye toward ensuring their outcome is reproducible, she says. “When we do these systematic reviews we publish the search strategy and someone down the road should be able to replicate those results.”

Hannigan recently collaborated with Tatsuya Norii, MD, associate professor in the Department of Emergency Medicine, who belongs to an interdisciplinary group working to update the American Heart Association (AHA) guidelines for performing emergency resuscitation.

“We want to make our guidelines up-to-date and evidence-based,” Norii says. “This is not easy. This is not generally done by one person or one group. We often need help from an experienced librarian with a research background and knowledge of informatics.”

Norii asked Hannigan to focus on identifying research papers having to do with basic life support (BLS) – measures such as cardiopulmonary resuscitation used in respiratory or cardiac arrest that can keep a patient alive

until paramedics or physicians can provide advanced life support.

“We formed the AHA BLS group in 2022,” Norii says. “I asked several people if a good informatics person could help us and Gale was introduced to me. That’s how we started meeting.”

Hannigan helped devise the search strategy for the literature review and provided Norii and his colleagues with the literature citations. They then turned to a tool called Covidence to screen the trove of research papers and download the ones that matched the criteria for the questions he was trying to answer.

Once they have been peer-reviewed, the updated resuscitation guidelines are set to be published in 2025, Norii says. “Often, the same recommendations are applicable for inside and outside the hospital. We want to make the guidelines as evidence-based as possible, but also easy to teach. That’s why we want to have as much evidence as possible.”

The new guidelines will inevitably affect clinic practice in emergency medicine, he says.

“It will have a huge impact in the next five years when people who have cardiac arrest and receive treatment,” Norii says. “Even a small change [in the guidelines] might affect the quality of the resuscitation. Behind the curtain is actually Gale. Gale helps get the papers so we can review these papers and include the evidence in the guidelines.”

Hannigan also conducts scoping reviews. One example is a partnership with Rebecca Kilburn, PhD, a research professor in the Prevention Research Center who is studying the economic cost-benefit value of school nurses, especially as it relates to student behavioral and mental health.

“The point of a scoping review is to look at the lay of the land,” Hannigan says. “The goal is to define a field and look at its boundaries and then look at where it could potentially grow.”





Kiran Bhaskar, PhD, and Jonathan P Hulse

TAKING THEIR BEST SHOT

UNM Researchers Create Custom-Tailored Vaccines That They Hope Will Prevent or Treat Alzheimer's Disease

By Michael Haederle

Older Americans are facing an epidemic of Alzheimer's disease, which afflicts an estimated 6.7 million Americans - nearly 11% of those age 65 or older - and places a huge burden on their families and the health care system.

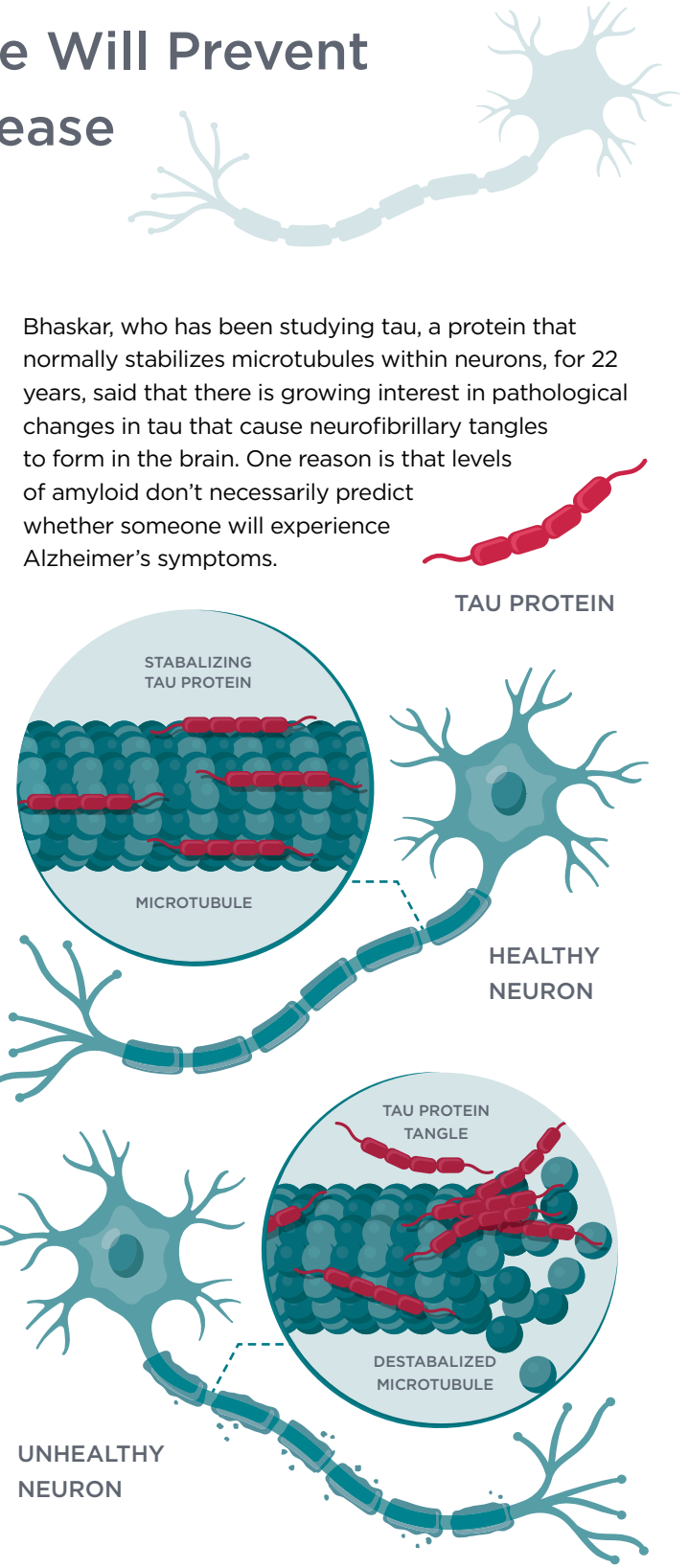
University of New Mexico Health Sciences researchers are searching for the Holy Grail, a vaccine capable of preventing or even reversing the disease. There are promising signs that an effective therapy could be within reach.

Kiran Bhaskar, PhD, an associate professor in the Departments of Molecular Genetics & Microbiology and Neurology and co-director of the UNM Brain and Behavioral Health Institute, heads a lab that has developed a vaccine that effectively removes tau, a protein associated with worsening Alzheimer's symptoms - in mice.

His lab is also working on a vaccine to tamp down neuroinflammation, which is known to help drive the disease process in dementia.

A Canadian company has an option to develop UNM's tau vaccine for clinical trials, Bhaskar said. "They are, as we speak, raising investment to see if we can do a quick GMP (good manufacturing practice) study so we can do a Phase 1 clinical trial," he said.

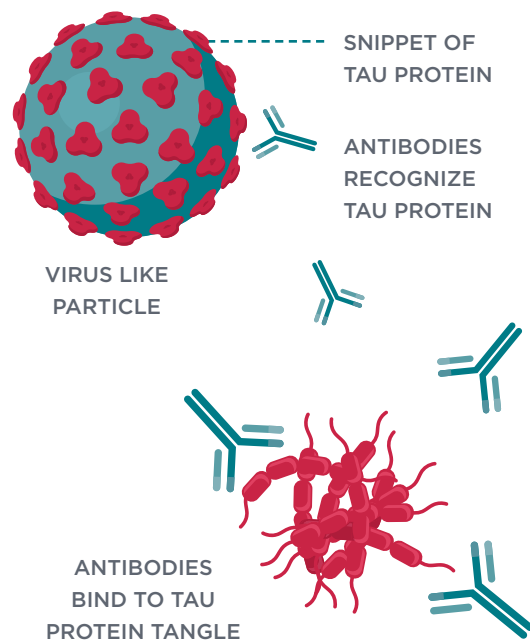
Much of the Alzheimer's research over the past couple of decades has focused on abnormal formation of a protein called amyloid beta, which can cause sticky plaques to form in the brain. FDA-approved medications using monoclonal antibodies have been developed that can remove amyloid, but they haven't shown much clinical benefit.



“The moment you see amyloid in someone’s brain doesn’t mean they have Alzheimer’s disease,” Bhaskar said. “Once tau comes up in the cerebrospinal fluid, you can guarantee that the cognitive function will go downhill really fast.”

Nicole Maphis, PhD, a postdoctoral fellow in the UNM Department of Neurosciences who conducted her dissertation research in Bhaskar’s lab, said four different vaccines against tau were developed using a virus-like particle (VLP) vaccine platform. VLPs are essentially viruses whose DNA has been removed. Any of a variety of antigenic epitopes – molecular targets – can be attached to their surface to elicit a strong, specific immune response.

VLPs with different snippets of the tau protein on their surface were tested to see whether they would trigger the immune system to generate antibodies. One of the four candidates – dubbed PT 181 – worked better than the rest in stimulating antibodies to bind with tau in the brains of mice bred to develop the characteristic tangles, Maphis said.



After receiving the vaccine, they developed antibodies that cleared the tau from their brains – and the response lasted for months, studies showed. The animals also underwent maze-like tests of their problem-solving skills. Those who had been vaccinated performed markedly better than those that hadn’t.

The vaccinated animals also had less brain shrinkage on MRI scans, suggesting that the vaccine prevented neurons from dying. There were also fewer tangles in both the cortex and the hippocampus – brain regions that are important for learning and memory, and which are destroyed in Alzheimer’s, Maphis said.

Because the primate immune system is different from that of mice, Maphis and Bhaskar also tested the vaccine on a group of rhesus macaques at the University of California, Davis, measuring a number of blood-based biomarkers.

“The important thing is doing this the entire time we didn’t see any changes in any of these metrics that made us concerned that this vaccine was toxic,” she said. “What was really important to us was to see whether this vaccine generated an antibody response. We noted there was significant elevation of the antibodies against tau. We also saw what we thought was a decrease in the circulating levels of tau.”

Taking her study one step further, Maphis took blood-derived fluid from vaccinated mice and monkeys, applied it to tau-entangled human brain tissue and saw the antibodies bind to the tau. “The vaccine we created is very specific to tau and we can show that in both mice and non-human primates,” she said.

Maphis cautioned that the positive outcomes from the tau vaccine research can’t be directly applied to Alzheimer’s disease, because the animal models tested only had pathological tau, but not amyloid beta in their brains. Still, the vaccination approach promises to be both simpler and more affordable than the expensive regular infusions required for current treatments.

“The amazing thing about these VLPs is the vaccine-induced immune response tends to be very durable,” Maphis said. “It has been postulated one or two doses might be effective.”

Jonathan Hulse, an MD/PhD candidate working as a research assistant in Bhaskar’s lab, has been exploring whether a vaccine could modify the brain inflammation that accompanies and worsens Alzheimer’s symptoms.

“Inflammation itself is nonspecific,” he said. “It’s not in itself diagnostic of Alzheimer’s disease, but it is one of the key pathologies we that we tend to see consistently. Inflammation might be a major driver of the disease process.”

With injury or infection, immune cells swarm in to remove anything that might be harmful, releasing inflammatory cytokines as a signal to recruit additional reinforcements. In the brain, special immune cells called microglia are activated by the accumulation of amyloid beta and tau proteins, but their pro-inflammatory activity can become problematic, Hulse said.

“These protein aggregates by their nature are hard to break down. They’re these large, misfolded proteins that the cells have a hard time getting rid of,” he said. “At some point in the disease process they go from this helpful inflammatory response where the cells are coming in and trying to clear things away, and switch to this more toxic, chronic inflammatory state.”

One part of the innate immune response is a protein complex called the NLRP3 inflammasome, and it is elevated in the brains of patients with Alzheimer’s disease. When animals are bred without the gene for NLRP3, something unusual happens, Hulse said. “You actually get a strong reduction in tau and amyloid beta accumulation over time. That suggests that the inflammation is somehow connecting this process.”

Developing a vaccine targeting the inflammatory process is tricky, Hulse said. “I’m trying to target an innate immune protein complex – this inflammasome complex – that’s found in most of the cells in our body, that’s utilized in all of our immune processes for inflammation. How do I target this in a way that’s not going to completely immunocompromise a patient?”

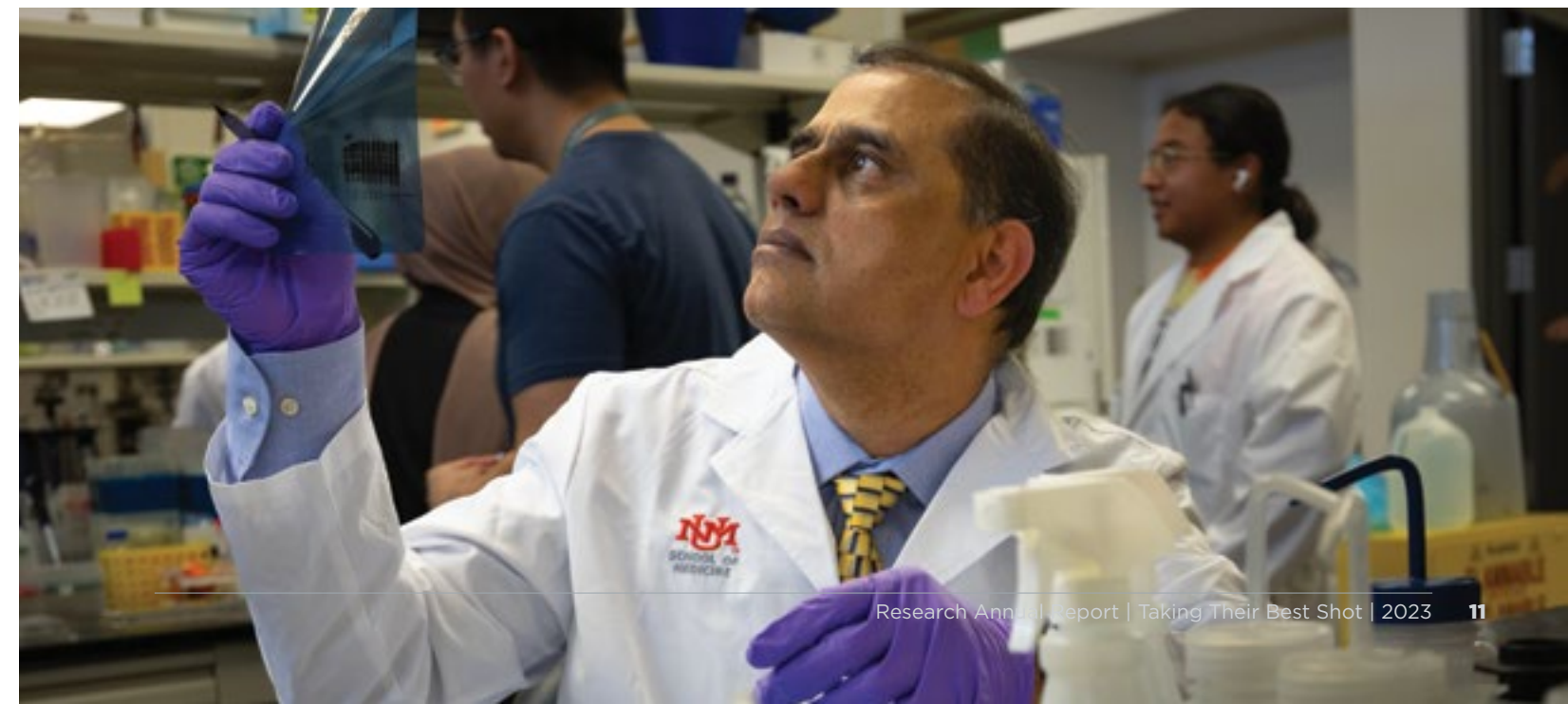
He is focusing on ASC specks (shorthand for apoptosis-associated speck-like protein containing a C-terminal caspase activation and recruitment domain) an inflammatory protein complex that is released into the extracellular space when cells die. “Many, many chronic inflammatory diseases have a lot of these ASC specks produced,” he said.

“The thought here is if we can get rid of this in some way, then we might be able to dampen inflammation and prevent disease progression,” Hulse said. “In our animal models where we’ve knocked out that protein, we see that. If you knock out the ASC protein or the NLRP3 protein you can dramatically reduce tau and amyloid beta.”

Hulse is developing vaccines that display regions of the ASC protein that would be visible to the immune system. But there is a risk of creating a vaccine that prompts the immune system to mistakenly attack the body’s own tissues, so he is first conducting safety studies. “So far, the results have been very promising,” he said. “We haven’t had any major side effects.”

Next, he plans to start testing whether the vaccines work.

“I’m hoping to do some of those studies, actually administering these vaccines into mouse models of Alzheimer’s disease and then show whether it can actually reduce inflammation or tau or amyloid beta or improve memory this upcoming year,” Hulse said. “We’re almost there.”



MICROPLASTICS

Make Their Way from the Gut to the Kidney, Liver and Brain, UNM Researchers Find

By Nicole San Roman

It's happening every day. From our water, our food and even the air that we breathe, tiny plastic particles are finding their way into our body.

But what happens once those particles are inside? What do they do to our digestive system?

New research from The University of New Mexico finds that those tiny particles – microplastics – are having a significant impact on our digestive pathways, making their way from the gut and into the tissues of the kidney, liver and brain.

Eliseo Castillo, PhD, associate professor in the Division of Gastroenterology & Hepatology in the Department of Internal Medicine, is an expert in mucosal immunology, who is leading the charge at UNM on microplastic research.

“Over the past few decades, microplastics have been found in the ocean, in animals and plants, in tap water

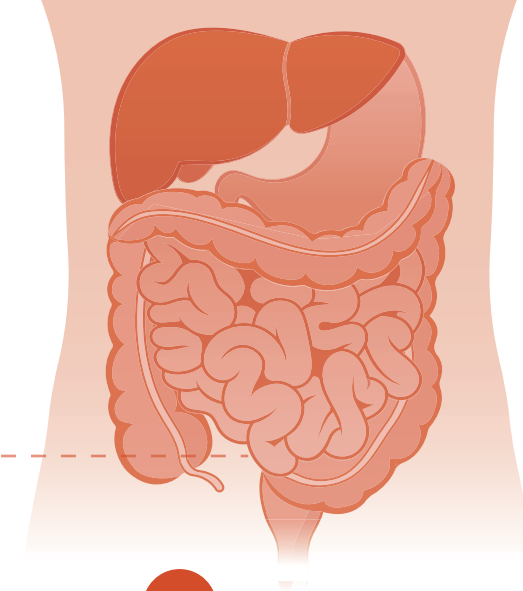
and bottled water,” Castillo says. “They appear to be everywhere.” Scientists estimate that people ingest 5 grams of microplastic particles each week on average – about the size of a credit card.

While other researchers are helping to identify and quantify ingested microplastics, Castillo and his team focus on what the microplastics are doing inside the body, specifically to the gastrointestinal (GI) tract and to the gut immune system.

Castillo says he first became interested in microplastics around 2019 after reading about a European gastroenterologist who had detected plastic particles in human stool samples.

“That tells me that as the microplastics are coming in, some are being flushed out, but our body is having to deal with it,” Castillo says. “That is what I want to know about – how is our body responding to this exposure?”

To better understand Castillo's research, it's important to understand the layers within the GI tract.



1

THE MICROBIOTA

Microbiota are all the microorganisms living inside the gut. “These microorganisms help us break down food to provide nutrients, maintain the gut barrier, protect against pathogens, and interact with our immune system,” Castillo says. A diverse microbiota is crucial for gut and systemic health.

2

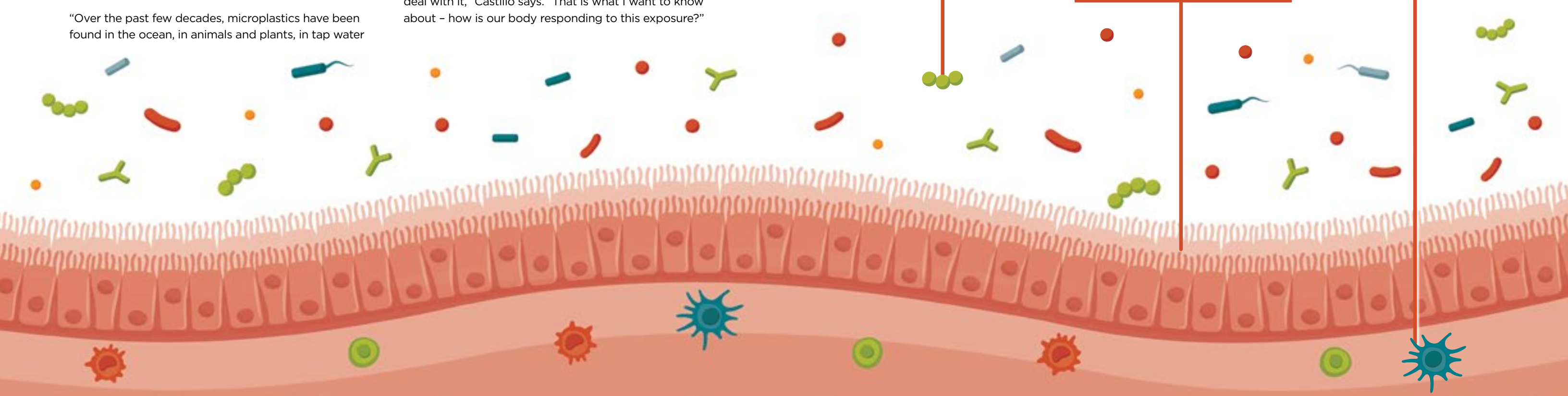
INTESTINAL EPITHELIAL LAYER

Beneath the microbiota lies the intestinal epithelium. This is a dynamic layer of cells that acts a barrier between luminal contents, including the microbiota. It also plays a critical role in digesting food and absorbing nutrients. This single layer of cells also helps to protect against microbial pathogens and also interacts with the microbiota and the immune system.

3

IMMUNE SYSTEM & MACROPHAGES

“Under the intestinal epithelium is the mucosal immune system,” Castillo says, “and then there's other cells, including enteric neurons and the vasculature that feeds into the rest of the body.”





Eliseo F Castillo, PhD, Marcus A Garcia, PharmD, Aaron S Romero, and Sumira Phatak, PhD

One type of immune cell the Castillo lab studies are macrophages – white blood cells that help get rid of foreign material and pathogens in the body. When macrophages encounter those materials, they swallow and digest them.

Gut health and the immune system are interconnected: A perturbation in one layer can affect the other two layers.

“Specifically, my interest in microplastics is what is it doing to the gut micro-environment,” he says. “What is it doing to GI health? That means what does it do to the microbiota? What is it doing to the gut epithelial cells, and what is it doing to the gut immune system?”

Castillo says his team’s preliminary studies have confirmed what other studies have also found, that microplastics do change the gut microbiota.

But changing the microbiota could have detrimental

effects on digestive health, Castillo says. “We’re still trying to figure out what are those effects and how microplastics change them.”

The next step was to find out whether microplastics are able to pass through the gut’s protective epithelial layer and cross into the bloodstream to affect other tissues in the body.

The short answer: Yes, they do.

Over a four-week period, Castillo, postdoctoral fellow Marcus Garcia, PharmD, and other UNM researchers exposed mice to microplastics in their drinking water. The amount was equivalent to the quantity of microplastics humans are believed to ingest each week.

Microplastics had migrated out of the gut into the tissues of the liver, kidney and even the brain. The study also showed the microplastics changed metabolic pathways in the affected tissues.

“We could detect microplastics in certain tissues after the exposure,” Castillo says. “That tells us it can cross the intestinal barrier and infiltrate into other tissues.”

Castillo says he’s also concerned about the accumulation of the plastic particles in the human body. “These mice were exposed for four weeks,” he says. “Now, think about how that equates to humans, if we’re exposed from birth to old age.”

The healthy laboratory animals used in this study showed changes after microplastic exposure, Castillo says. “Now imagine if someone has an underlying condition, and these changes occur, could microplastic exposure exacerbate an underlying condition?”

He has previously found that microplastics are also impacting macrophages – the cells that work to protect the body from foreign particles.

In a paper published in the journal *Cell Biology & Toxicology* in 2021, Castillo and other UNM researchers found that when macrophages encountered and ingested microplastics, their function was altered and they released inflammatory molecules.

“It is changing the metabolism of the cells, which can alter inflammatory responses,” Castillo says. “During intestinal inflammation – states of chronic illness such as ulcerative colitis and Crohn’s disease, which are both forms of inflammatory bowel disease – these macrophages become more inflammatory and they’re more abundant in the gut.”

The next phase of Castillo’s research, which is being led by postdoctoral fellow Sumira Phatak, PhD, will explore how diet is involved in microplastic uptake.

“Everyone’s diet is different,” he says. “So, what we’re going to do is give these laboratory animals a high-cholesterol/high-fat diet, or high-fiber diet, and they will be either exposed or not exposed to microplastics. The goal is to try to understand if diet affects the uptake of microplastics into our body.”

Castillo says one of his PhD students, Aaron Romero, is also working to understand why there is a change in the microbiota. “Multiple groups have shown microplastics change the microbiota, but how it changes the microbiota hasn’t been addressed.”

Castillo hopes that his research will help uncover the potential impacts microplastics are having to human health and that it will help spur changes to how society produces and filtrates plastics.

“At the end of the day, the research we are trying to do is find out how is this impacting gut health,” he says. “Research continues to show the importance of gut health. If you don’t have a healthy gut, it affects the brain, it affects the liver and so many other tissues. So even imagining that the microplastics are doing something in the in the gut, that chronic exposure could lead to systemic effects.”



FROM RESEARCH TO PRACTICE

Applying Lessons Learned from the Long COVID Study

By Chris Ramirez

After nearly three years of studying the effects of “Long COVID,” a variety of symptoms that linger after a SARS-CoV-2 infection, University of New Mexico clinicians are using their research findings to enhance and improve treatment plans for patients.



Michelle Harkins, MD

In late 2021, UNM joined two large national studies of patients through the RECOVER (Researching COVID to Enhance Recovery) Initiative, funded by the National Institutes of Health. Michelle Harkins, MD, the study’s co-principal investigator (PI), said the NIH has poured about a billion dollars into identifying and understanding Long COVID.

Nationally, the RECOVER program has enrolled 12,599 adults and 14,131 children into the research, she said, while New Mexico has enrolled 148 adults, with about 42% of them identifying as Hispanic or Chicano, and 79 pediatric patients, about 50% of whom identify as Hispanic or Chicano.

“Having a diverse group is important to the research,” said Harkins, who serves as division chief of Pulmonary, Critical Care and Sleep Medicine in the UNM School of Medicine. “UNM was specifically asked to participate in the program because our state has large Hispanic and Native American populations. When you look at which demographics got hit the hardest across the nation, African Americans, Hispanics and Native Americans were disproportionately affected.”

Matt Kadish, MD, assistant professor of general pediatrics in the School of Medicine, focuses on pediatric patients as a RECOVER study co-PI. Enrolling children and teens is important, he said, because this group may present symptoms that aren’t necessarily common in adults.

“Children and teens are not immune from Long COVID,” Kadish said. “And in many ways, pediatric patients can be more complex. For example, if a middle school-aged pre-teen is showing signs of withdrawal, mood changes and anxiety, we need to really examine: are these symptoms that can be attributed to Long COVID, or are these symptoms common to the hormonal changes that occur during puberty?”

The studies include a review of medical records and diagnostic screenings to better understand how people experience long-lasting symptoms after a COVID diagnosis and identify the biological causes behind it.

According to Harkins, a common Long COVID symptom in adults is post-exertional malaise, in which even minor exertion can trigger fatigue and exhaustion that may last for days or weeks. In many cases, researchers have found actual muscle tissue damage, she said.

Patients have also reported severe and chronic fatigue even with no preceding activities. Another common

symptom is impaired cognitive function, including brain fog and inattention. In some cases, depression or ADHD symptoms have been exacerbated after COVID. “We’ve heard from business executives who functioned at a very high level before COVID, who now say their inability to focus has seriously damaged their careers,” Harkins said. “And we’ve heard from marathon runners and athletes who now find it difficult to play with their children.”

Harkins and Kadish believe Long COVID symptoms have increased behavioral health concerns, with more instances of panic attacks, depression and anxiety. That business executive who excelled at work and had generally been financially secure may now risk losing his job and face negative financial consequences. And that marathoner who used running as a mental health outlet may now be confined to sitting or lying down. Drastic lifestyle changes have taken a real toll on many, causing new behavioral health concerns.

As early as the summer of 2020, UNM Health System patients who had previously been hospitalized with COVID – and some who had been infected but did not require hospitalization – reported feeling extremely fatigued to their primary care physicians.

“Many of these patients were worried that they wouldn’t be believed for the symptoms they were reporting,” said Alisha Parada, MD, RECOVER study co-PI and medical director of the Long COVID clinic at UNM Hospital. “These people felt stigmatized. Their own families were not believing them.”

Many of those enrolled in the RECOVER study came through Parada’s clinic. This has allowed Parada and the team to use these patients’ health data to analyze and compare with others across the nation to tailor a treatment plan for each.

“The discoveries so far about Long COVID have been incredibly valuable to medicine, but to my patients, it’s created validation,” Parada said. “I have believed them from the start. They knew what they were feeling in their bodies. Now there is science to prove Long COVID symptoms are real. My patients were eager to join the RECOVER study because people want to feel like they can contribute to something valuable after feeling devalued for so long.”

With more information and data at hand thanks to the RECOVER study, Parada can help patients who come to the Long COVID clinic in three ways. She begins with goal

setting. “Every patient has different goals,” she said. “My job is to listen to what that person needs and wants so that we can work toward that goal.”

Next, Parada determines what symptoms a patient is experiencing to create a management plan. She evaluates current medications, past and current health concerns, and works with each patient to determine an appropriate course of action to try to lessen the symptoms. She will also refer patients to other specialists, who could be from other areas of medicine, including behavioral health, neurology, pulmonology or even cardiology.

In January 2024, U.S. Sen. Bernie Sanders invited Harkins to testify before the U.S. Senate Health, Education, Labor, and Pensions Committee to address Long COVID research. Harkins said she used her presence on a national stage to advocate for five priorities:

- Use the Project ECHO model nationally to identify and treat Long COVID. By harnessing the power of virtual communities during an ECHO session, people living in remote or rural areas have a greater chance of accessing care.
- More funding for Long COVID research.
- Legislation that would ease access to care for Long COVID.
- Funding for more clinical trial networks.
- Building an infrastructure to treat Long COVID, including a national Long COVID Research Center.

“Very few Long COVID clinics exist nationwide,” Harkins told the Senate committee. “If they do exist, they are in bigger academic centers in big cities. In New Mexico, for example, we have one Long COVID clinic at UNM. What we need are multidisciplinary clinics to address the myriad of symptom complexes that these patients face. We need a pulmonologist, a cardiologist, a neurologist or psychologist, physical therapy, occupational and speech therapy, and social workers to be in one location, so patients can be seen by whomever they need.”

Over the next five years, “we need to identify targets for treatment and have data available showing the efficacy of treatments,” Harkins said. “This is how we’re going to make a positive difference in patients’ lives and we’re going to need help getting there.” 🏠

MAKING



Monica Rosas Lemus, PhD

STRIDES

UNM Women Scientists Are Advancing Core Knowledge in Molecular Genetics & Microbiology

By Elizabeth Dwyer Sandlin

Women scientists in the Department of Molecular Genetics & Microbiology at The University of New Mexico Health Sciences are leading groundbreaking research funded by the National Institutes of Health (NIH) to drive advancements in diverse fields, from molecular biology to infectious diseases.

JING PU, PHD

Assistant Professor Jing Pu, PhD, is spearheading investigations focusing on understanding the cellular mechanisms of metabolism, shedding light on potential targets for therapeutic interventions. Her research holds promise for unraveling mysteries

in cell biology and paving the way for novel treatments of conditions like non-alcoholic fatty liver disease, Type 2 diabetes and other metabolic disorders.

KATHRYN FRIETZE, PHD

Another notable figure in UNM's research community is Assistant Professor Kathryn Frieze, PhD, who is working to develop a vaccine against Chlamydia, a prevalent sexually transmitted infection.

Frieze's dedication to women's health is evident in her pursuit of innovative solutions to combat this global health concern.

She custom crafts vaccines using virus-like particles, a strategy that holds significant potential for effectively preventing Chlamydia.

ALISON KELL, PHD

Assistant Professor Alison Kell, PhD, is making strides in understanding virus evolution, a critical area of study with implications for public health and infectious disease management. Her research delves into the genetic mechanisms underlying viral adaptation and transmission dynamics.

With her NIH funding, Kell's investigations aim to inform the development of strategies to mitigate the spread of infectious diseases.

MONICA ROSAS LEMUS, PHD

Along with her team at UNM, Assistant Professor Monica Rosas Lemus, PhD, is at the forefront of research aimed at staying ahead of COVID-19 and combating antimicrobial resistance.

Lemus wants to understand specific metabolic coronavirus-host interactions in hopes of developing innovative treatments. By unraveling the complexities of antimicrobial resistance, she hopes to pave the way for the development of new therapeutics that can combat resistant pathogens.

JAYA RAJAIYA, PHD

Associate Professor Jaya Rajaiya, PhD, studies ocular diseases. Her team focuses on understanding the mechanisms behind ocular diseases like retinitis pigmentosa and age-related macular degeneration.

Their research involves studying viral infections in the eye, particularly the role of cytomegalovirus (CMV) in causing inflammation and damage. They aim to develop therapies targeting CMV to prevent or treat these conditions, potentially leading to significant breakthroughs in ocular disease treatment.

Through NIH-funded initiatives, these women researchers at UNM are driving innovation and making significant contributions to the advancement of scientific knowledge and the improvement of public health outcomes.

Their pioneering efforts serve as a beacon of hope, offering new insights and solutions that have the potential to transform health care and improve lives around the world. 🌍



Jaya Rajaiya, PhD

PATHWAYS TO DISCOVERY

UNM Health Sciences Researchers Are Finding New Solutions for Stubborn Health Problems

By Brianna Wilson

Modern medicine would not be modern without consistent advancements made by health care workers at The University of New Mexico. In 2023, dozens of doctors, nurses and laboratory researchers tested the boundaries of scientific knowledge to develop new and potentially more efficient ways to deliver patient care.

The following three inventions represent just a few of the recent cutting-edge intellectual property achievements at UNM Health Sciences.

IMPROVING METABOLIC SYNDROME DIAGNOSIS AND TREATMENT

TAGS stands for transdermal arterial gasotransmitter sensor, but Nancy Kanagy, PhD, is calling it a “game changer” for patients with slow-healing wounds due to metabolic syndrome.

Her team developed the shoebox-size device with peripheral pieces that attach to a patient’s arms and legs. It measures hydrogen sulfide in the arteries as a marker for loss of blood flow.

“It gives our primary care physicians a tool that they did not have before, to really get a handle on what is happening at the critical site of the skin where these non-healing wounds develop,” said Kanagy, professor and chair in the Department of Cell Biology & Physiology in the UNM School of Medicine. “It is more accessible, it is less expensive, it is easier to use, it is faster and it is non-invasive.”

Kanagy said her team is now in its second limited clinical trial testing the diagnostic device. “When we get FDA approval, I know that our small business partner will immediately be in conversation to try to get this into production,” she said.

It may take 18 to 24 months to win FDA approval and start wider clinical trials, Kanagy said. For some trials, the device might be used by some patients on a limited basis within two to three years. It could be closer to five years before TAGS is more widely available to primary care providers.

In the meantime, Ross Clark, MD, MBA, assistant professor in the UNM Department of Surgery and the Department of Cell Biology, is expanding this groundbreaking work to develop novel treatment and therapy for the non-healing foot wounds that are characteristic symptoms of diabetes and metabolic syndrome.

GROUNDBREAKING COMPOUNDS FOR TREATING PAIN

Pain is an uncomfortable sensory and emotional experience that no two people feel the same way – that is according to the National Institute of Neurological Disorders and Stroke. Millions of U.S. adults suffer from debilitating chronic pain.

It is something Erin D. Milligan, PhD, professor in Department of Neurosciences, hopes to put an end to someday. She is making promising progress with her novel application of a compound called BIRT-377.

It was originally developed at UNM to identify inflammation in the body. Milligan is using the compound to test for pain control, because pain is often caused by peripheral nerve damage resulting from underlying chronic inflammatory processes in the body that ultimately affect immune glial cells and neurons in the central nervous system. BIRT-377 blocks peripheral immune cells before they can get to the spinal cord and trigger a pathological pain signal.



Nancy Kanagy, PhD

“If we could prevent that from happening and really target peripheral immune cells, then we might be able to control chronic pathological pain without directly impacting neurons,” Milligan said. “The reason that it is novel is because there are not any pain therapeutics that are targeted solely to immune cells and solely to glial cells to control the bad pain.”

Current therapies only control pain modestly and not completely, she said, so a new paradigm for preventing pain has the potential to change countless lives.

Milligan said she is pursuing off-label clinical applications for FDA-approved compounds that have already been shown to be safe so that they can now be evaluated for potential treatment of chronic pain.

NEW VACCINE TARGETING MULTIPLE MOSQUITO-BORNE ILLNESSES

UNM researchers are targeting a component of mosquito saliva that is a critical infection factor for viruses that have caused epidemics like dengue, Zika and chikungunya.

Bryce Chackerian, PhD – Regents’ Professor in the UNM Department of Molecular Genetics & Microbiology, and

postdoctoral fellow Alex Francian, PhD – are part of the team that used the sialokinin peptide in *Aedes aegypti* mosquito saliva to develop a pan-viral vaccine. This approach could provide an additional layer of protection from several different potential pathogens.

“We’re seeing these mosquitos now in New Mexico, and they are spreading further and further north,” Chackerian said. “This is not just a vaccine that is going to be useful for Central America or places that have traditionally struggled with these viral infections, but we are going to see more and more cases of these infections in the U.S.”

Francian said initial trials have resulted in positive antibody responses in mice. The UNM team is collaborating with researchers at Colorado State University on the study and awaiting further research funding.

“If that does happen, we are going to test the protection of this vaccine against a couple of different viruses,” Francian said.

“We are past the idea stage,” Chackerian added. “We have some data, but whether it actually works or not – that is the question.”



PATENTS & INVENTIONS

Diagnosis and Treatment of Metabolic Syndrome

Aleksandr Birg *Assistant Professor, Gastroenterology*
Nancy Kanagy *Professor, Cell Biology & Physiology*

Compounds for Treating Pain

Cristian-George Bologa *Research Professor, Internal Medicine Division of Translational Informatics* Erin Milligan *Professor, Neurosciences* Tudor Oprea *Emeritus Professor, Internal Medicine Division of Translational Informatics* Oleg Ursu *Research Assistant Professor, Internal Medicine Division of Translational Informatics*

Using Novel Notch Inhibitor Auranofin in Target Cancer Therapy

Hua-Ying Fan *Associate Professor, Internal Medicine Division of Molecular Medicine* Robert Lake *Research Assistant Professor, Internal Medicine Division of Molecular Medicine*

SDCC SAS Code

Jessica Anderson *Biostatistician, School of Medicine*

Mammalian ATG8 Proteins and ATG9A Direct Sealing of Autophagosomal Membranes

Vojo P. Deretic *Professor, Chair - Molecular Genetics and Microbiology, Molecular Genetics and Microbiology* Graham Timmins *Professor, Pharmacy*

N-Terminal Fraction of VPS39 Disassociates SARS-CoV-2 Protein ORF3a From Host Membrane

Jing Pu *Assistant Professor, Molecular Genetics and Microbiology*

Disaster Risk Assessment and Safety Training: Interprofessional Capability (DRASTIC)

Roberta Lavin *Professor, College of Nursing*

Curcumin Analogues for the Treatment of Gynecological Cancers

Kimberly Leslie *Research Professor, Internal Medicine Division of Molecular Medicine*

HESTIA

Suzanne Burns *Associate Professor, Pediatrics*

A Virus-Like Particle-Based Vaccine Targeting the Mosquito Salivary Protein, TRIO

Bryce Chackerian *Regents' Professor, Molecular Genetics & Microbiology*

Arginine Bioavailability for Myxoma Virus Activity

Eric Bartee *Associate Professor, Internal Medicine Division of Molecular Medicine*

The RPL/RPS Gene Signature of Melanoma Associates with Brain Metastasis

Dario Marchetti *Professor*

COG Kid's Care App

Esther Lucero *Sr. RN Case Manager, Pediatrics* Amanda Ortiz *Program Manager, Pediatrics* Kristel Wintheiser *Nurse Manager/Critical Care, Pediatrics*

PULSNAR (Positive Unlabeled Learning Selected Not At Random)

Praveen Kumar *Research Assistant, Internal Medicine* Christophe Lambert *Professor, Department of Internal Medicine, Department of Psychiatry and Behavioral Sciences, Department of Computer Science, Internal Medicine Division of Translational Informatics*

A Virus-Like Particle-Based Vaccine Targeting the Mosquito Salivary Peptide, Sialokinin

Bryce Chackerian *Regents' Professor, Molecular Genetics & Microbiology*

Epigenetic HDAC5 Inhibitor LMK235 Reverses Chronic Craniofacial Neuropathic Pain in Mice

Sascha Alles *Assistant Professor: Anesthesiology Research, Anesthesiology* S. Elise Hui *Post Doctoral Fellow: Anesthesiology Research, Anesthesiology*

Rac1 Promotion of Oxidative Stress Signaling Regulates 2 Epithelial to Mesenchymal Transition in Ovarian Cancer and is 3 Reversed by R-ketorolac

Laurie Hudson *Professor, Pharmaceutical Sciences* Angela Wandinger-Ness *Distinguished Professor, Interim Director for Center for Molecular Discovery, Pathology*

Coronavirus Vaccines Based on Nucleocapsid Protein Epitopes

Steven Bradfute *Assistant Professor, Internal Medicine* Bryce Chackerian *Regents' Professor, Molecular Genetics & Microbiology* Julianne Peabody *HS Research Tech 3, Molecular Genetics & Microbiology* David Peabody *Professor, Molecular Genetics & Microbiology*

Biomarkers Diabetic Retinopathy, MTCH as Target for Therapeutic Intervention

Arup Das *Chief & Professor of Ophthalmology, Ophthalmology* Finny Monickaraj *Research Assistant Professor, Ophthalmology*

CXCL1 As a Target in Diabetic Macular Edema

Arup Das *Chief & Professor of Ophthalmology, Ophthalmology* Finny Monickaraj *Research Assistant Professor, Ophthalmology*

Repurposed FDA Approved Drugs for Treatment of Diabetic Macular Edema

Arup Das *Chief & Professor of Ophthalmology, Ophthalmology* Finny Monickaraj *Research Assistant Professor, Ophthalmology*

Covid-19 Vaccines Based on the Stem Helix of the SARS-CoV-2 Spike Protein.

Steven Bradfute *Assistant Professor, Internal Medicine* Bryce Chackerian *Regents' Professor, Molecular Genetics & Microbiology* Julianne Peabody *HS Research Tech 3, Molecular Genetics & Microbiology* David Peabody *Professor, Molecular Genetics & Microbiology*

Controlled Release 3D Printed Solid Oral Dosage Form

Jason Thomas McConville *Associate Professor, Pharmaceutical Sciences* Maydelin Santiesteban *Pharmacy Intern, Pharmacy*

Enhancing Ascorbate Anticancer Activity

Todd Thompson *Associate Professor, Pharmaceutical Sciences* Graham Timmins *Professor, Pharmacy*

Senolytic Vaccine Using Virus-like Particles

David Scieszka *Associate Scientist II, Pharmacy*

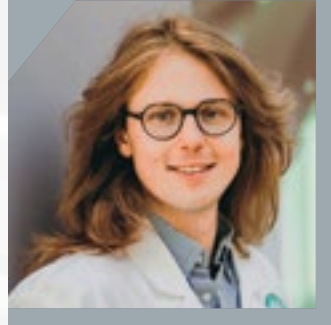
Tumor Tissue Segmentation for Seed-based Mapping of Peritumoral Resting-State Connectivity

Stefan Posse *Professor, Neurology*

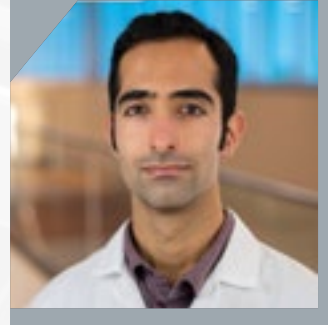
ASC-Speck Flow-Cytometry Staining and Analysis

Kiran Bhaskar *Molecular Genetics & Microbiology* Shanya Jiang *Molecular Genetics & Microbiology* Gary Rosenberg *Professor, Neurology, School of Medicine* Kathryn Sanchez *Post-Doctoral Fellow, School of Medicine*

RESEARCH 2023 TRAINING GRANTS



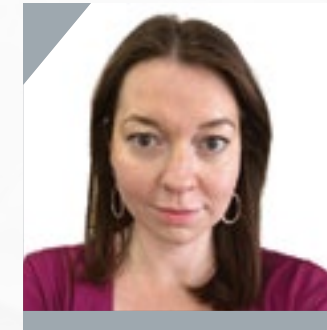
Ian Marshall Adams, PhD Candidate
Anesthesiology & Critical Care Medicine
T32 Scholar, NIGMS
Neuroscience, translational research, cell biology and physiology
Mentors: Elaine Bearer, MD, PhD; Michelle Ozbun, PhD



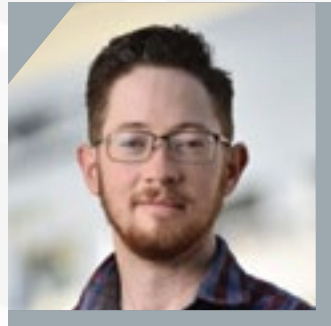
Rosstin Ahmadian, PhD
Cell Biology & Physiology
F31 Scholar, NHLBI
Signaling mechanisms that regulate CH-dependent pulmonary hypertension
Mentor: Thomas Resta, PhD; Nikki Jernigan, PhD



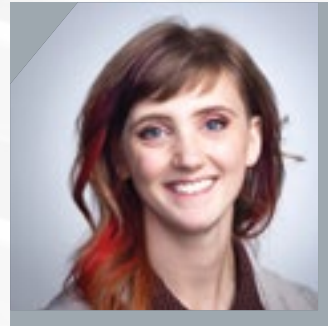
Ross Clark, MD
Surgery
KL2 Scholar, NCATS
Studying hydrogen sulfide metabolism and signaling in wound healing and angiogenesis in hopes of developing novel therapies to promote neovascularization of at-risk wounds in the setting of aging, diabetes, obesity and peripheral artery disease.
Mentors: James Chodosh, MD; Nancy Kanagy, PhD



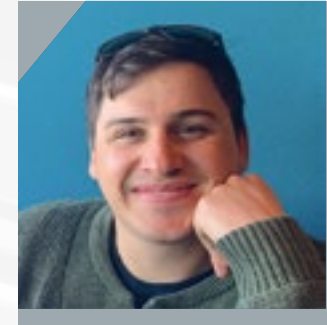
Elizabeth Clarke, PhD
Internal Medicine
T32 Scholar, NIAID
Emerging and biodefense infectious diseases. Filovirus glycosylation and antivirals for coronaviruses
Mentor: Steven Bradfute, PhD



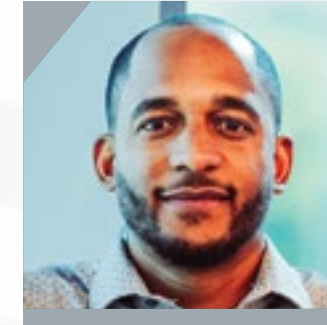
Jacob Anderson, PhD
Cell Biology & Physiology
T32 Scholar, NHLBI
Investigating the role of membrane cholesterol in mesenteric arterial endothelial cells.
Mentor: Jay Naik, PhD



Elizabeth Bailey, PhD
Postdoctoral Fellow, Pathology
ASERT, NIGMS
Utilizing super-resolution microscopy to interrogate the influence of antigen properties such as valency, spacing and rigidity on the spatiotemporal organization of aggregated receptors and site-specific phosphorylation events.
Mentor: Diane Lidke, PhD



Thomas De Pree, PhD
Postdoctoral Fellow, Pharmaceutical Sciences
ASERT, NIGMS
Advancing ethnographic principles of investigation for community-based participatory research and critical multi-stakeholder analysis of the UNM METALS Superfund Research Center Program.
Mentors: Debra MacKenzie, PhD; Johnnye Lewis, PhD



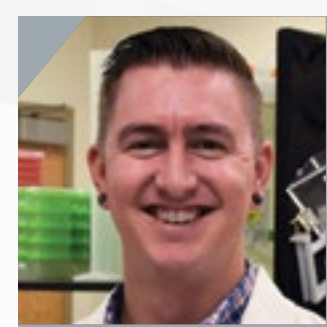
Xavier DeLeon, PhD Candidate
Cell Biology & Physiology
T32 Scholar, NIGMS
Cell Biology and physiology, molecular genetics and microbiology, cancer biology.
Mentors: Jennifer Gillette, PhD; Nikki Jernigan, PhD



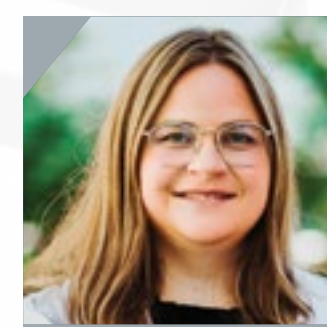
Michael Bennett, PhD Candidate
Neurosciences
F31 Scholar, NINDS
Studying alternative mechanisms of spreading depolarization-induced damage and the contributions of synaptic Zn²⁺ release and L-type Ca²⁺ channel activity to these deleterious consequences.
Mentor: C. William Shuttleworth, PhD



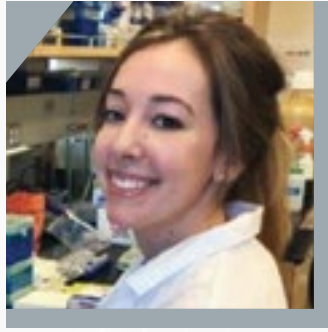
Christian Cabanlong, PhD
Postdoctoral Fellow, Biochemistry & Molecular Biology
ASERT, NIGMS
Trichloroethylene's role in the progression of autoimmunity.
Mentor: Sarah Blossom, PhD



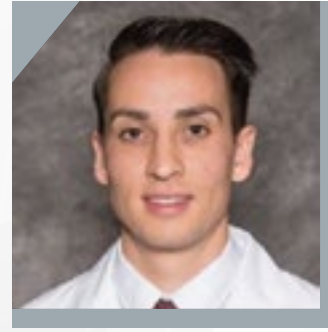
Daryl Domman, PhD
Internal Medicine
KL2 Scholar, NCATS
Using genomics to study transmission dynamics and evolution of pandemic cholera; the genomic epidemiology of SARS-CoV-2 across the Mountain West, and applying One Health approaches to understanding antimicrobial resistance.
Mentors: Kim Page, PhD; Nestor Sosa, MD



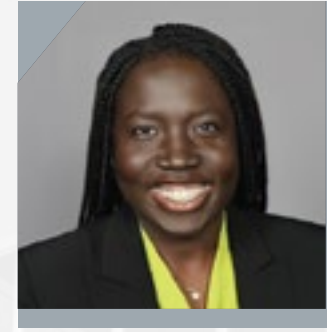
Brooke Dunn, MD/PhD Candidate
Neurosciences
T32 Scholar, NIAAA
Studying the impact of prenatal substance exposures on neurodevelopmental outcomes, with a focus on prenatal alcohol exposure and executive dysfunction.
Mentors: Jessie Maxwell, MD; Jonathan Brigman, PhD; Daniel Savage, PhD



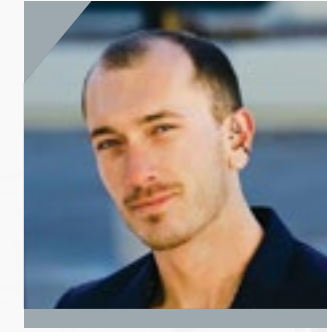
Alexandra Francian, PhD
 Postdoctoral Fellow, Molecular Genetics & Microbiology
 ASERT, NIGMS
Developing immunotherapies and vaccines to treat cancer and other malignancies and disease with a focus on developing vaccines for malaria and mosquito-borne viruses using virus-like particle platforms.
 Mentor: Bryce Chackerian, PhD



Marcus Garcia, PharmD
 Postdoctoral Fellow, Pharmaceutical Sciences
 ASERT, NIGMS
Characterization of reproductive toxicity of environmental exposure, including microplastics and air pollutants.
 Mentors: Matthew Campen, PhD; Eliseo Castillo, PhD



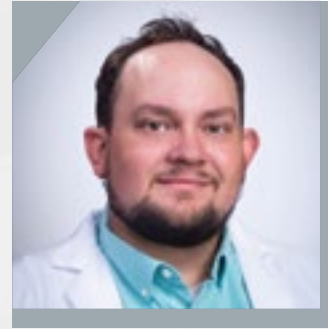
Andzoa Jamus, PhD Candidate
 Molecular Genetics & Microbiology & Microbiology
 T32 Scholar, NIAID
Investigation, development and optimization of vaccines against Chlamydia using a bacteriophage virus-like particle platform.
 Mentor: Kathryn Frieze, PhD



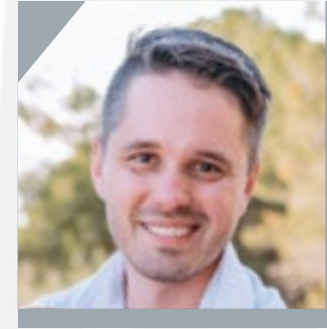
David Jones, PhD Candidate
 Cell Biology & Physiology
 T32 Scholar, NIGMS
Regulation of ion channel activity and vascular tone by membrane cholesterol in endothelial cells.
 Mentor: Jay Naik, PhD



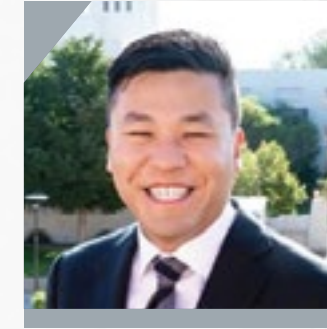
Selina Garcia, PhD
 Cell Biology & Physiology
 T32 Scholar, NHLBI
Understanding mechanisms leading to vascular dysfunction, inflammation and cardiovascular disease.
 Mentors: Laura Gonzalez Bosc, PhD; Nikki Jernigan, PhD



Samuel Goodfellow, PhD
 Internal Medicine
 T32 Scholar, NIAID
Developing molecular assays to investigate hantavirus genetics in both clinical and host reservoir samples.
 Mentor: Steven Bradfute, PhD



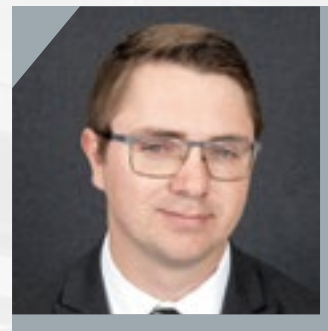
Stefan Klimaj, PhD Candidate
 Molecular Genetics & Microbiology
 T32 Scholar, NIAID
Hantavirus pathogenesis in human zoonotic infections and hantavirus persistence in rodent reservoir species.
 Mentor: Alison Kell, PhD



Randy Ko, MD/PhD Candidate
 Internal Medicine
 T32 Scholar, NHLBI; F31 Scholar, NIDDK
Studying molecular mechanisms of estrogen signaling through the G protein-coupled estrogen receptor and the role this receptor plays in obesity, lipid metabolism and wound healing.
 Mentors: Eric Prossnitz, PhD; Meilian Liu, PhD



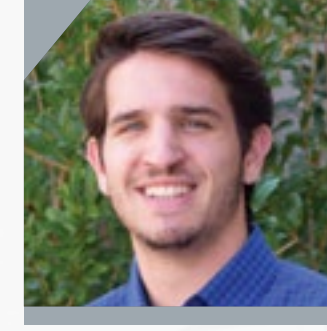
Devon Hatcher, PhD Candidate
 Neurosciences
 T32 Scholar, NIGMS
Studying spreading depolarization in brain injury and disease.
 Mentor: Nancy Kanagy, PhD



Russell Hunter, PhD Candidate
 Pharmaceutical Sciences
 F31 Scholar, NICHD
Consequences to fetal-maternal health following gestational exposure to ozone.
 Mentor: Matthew Campen, PhD



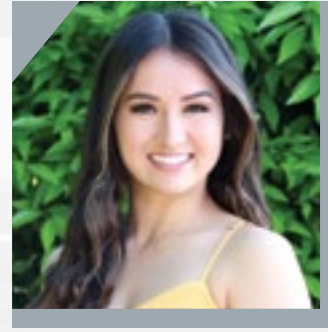
Jamie Krashin, MD
 Obstetrics & Gynecology
 KL2 Scholar, NCATS
Using implementation science to understand and address disparities in early pregnancy loss and other early pregnancy complications in rural New Mexico.
 Mentors: Larissa Myaskovsky, PhD; Cathleen Willging, PhD; Yuko Komesu, MD; Courtney Schreiber, MD, MPH.



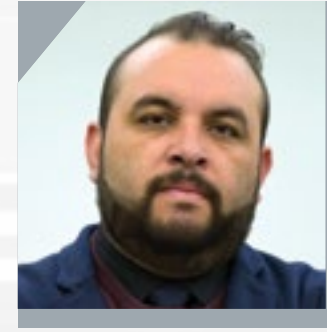
Benjamin Lantz, PhD Candidate
 Cell Biology & Physiology
 T32 Scholar, NHLBI
Immune cell imbalance in chronic hypoxia-induced pulmonary hypertension
 Mentors: Jay Naik, PhD; Thomas Resta, PhD; Meilian Liu, PhD



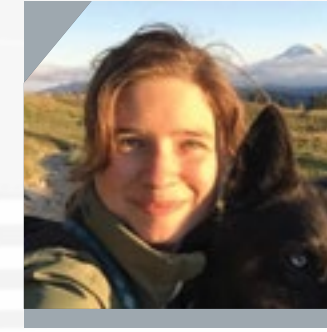
Autumn LaPointe, PhD
Molecular Genetics & Microbiology
T32 Scholar, NIAID
Interferon activation and interferon-mediated restriction during hantavirus infection
Mentor: Alison Kell, PhD



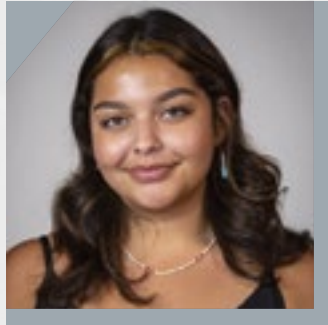
Angela Littlefield, PhD Candidate
Cell Biology & Physiology
T32 Scholar, NIGMS
Molecular basis of disease, cancer biology and immunology
Mentor: Nancy Kanagy, PhD



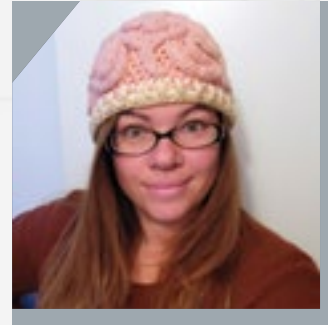
Roberto Mota Alvidrez, MD
Neurosciences
T32 Scholar, NIAAA
Exploring the impact of third-trimester alcohol exposure on learning and memory deficits through an in-depth analysis of the subiculum's Vglut2+ bursting neurons.
Mentor: C. Fernando Valenzuela, MD, PhD



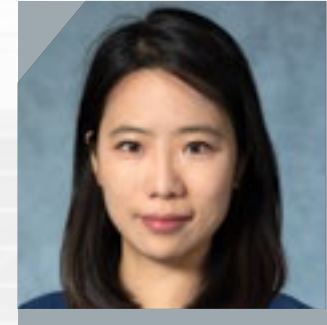
Abbey Myrick, PhD Candidate
Neurosciences
T32 Scholar, NIAAA
Studying the mechanisms behind learning and memory deficits seen in prenatal alcohol exposure using mouse models and in vivo electrophysiology.
Mentor: David Linsenbardt, PhD



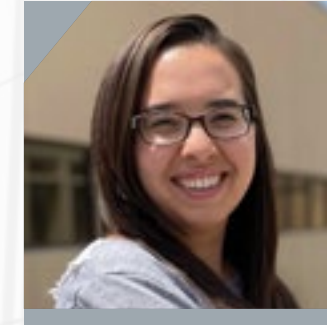
Katalina Lopez, PhD Candidate
Neurosciences
T32 Scholar, NIAAA
Exploring the impact of third-trimester alcohol exposure on learning and memory deficits through an in-depth analysis of the subiculum's Vglut2+ bursting neurons
Mentor: C. Fernando Valenzuela, MD, PhD



Nicole Maphis, PhD
Postdoctoral Fellow, Neurosciences
ASERT, NIGMS
Elucidating the neurobiological causes and consequences of alcohol use disorder by exploring the molecular genetics behind recorded brain activity to identify biological systems that can be targeted for intervention
Mentor: David Linsenbardt, PhD



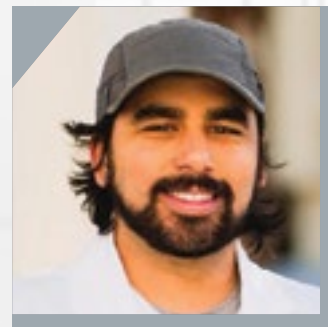
Seeun Oh, PhD
Molecular Genetics & Microbiology
T32 Scholar, NIAID
Seeking to understand how TRIM proteins and their regulation of autophagy impact immune cells during phagolysosome formation and the degradation of phagocytosed microbes.
Mentor: Michael Mandell, PhD



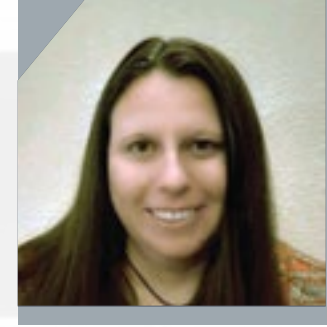
Erica Pascetti, PhD Candidate
Pathology
T32 Scholar, NIH
Studying hematopoietic stem and progenitor cells
Mentor: Jennifer Gillette, PhD



Caitlin McPherson, PhD
Postdoctoral Fellow, Pathology
ASERT, NIGMS
Applying insights from the extended evolutionary synthesis to archaeological and medical research, in order to better understand how processes of extragenetic inheritance shape patterns of phenotypic variation and contribute to evolutionary processes.
Mentors: Heather Edgar, PhD; Lexi O'Donnell, PhD



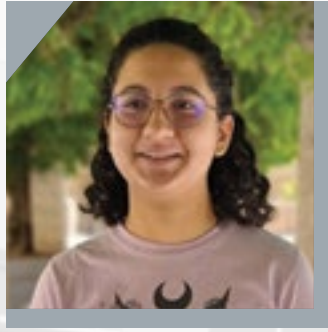
Jorge Moreno, PhD Candidate
Pharmaceutical Sciences
T32 Scholar, NIGMS
Studying heavy metal inhalation toxicology with a focus on autoimmune incidence after exposure to particulate matter derived from abandoned uranium mine sites.
Mentors: Nancy Kanagy, PhD; Bryce Chackerian, PhD; Judy Cannon, PhD



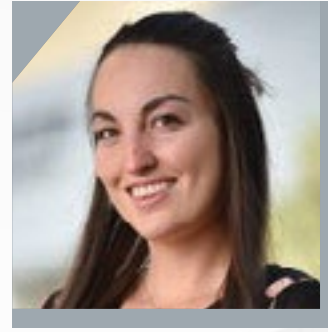
Julianne Peabody, PhD Candidate
Molecular Genetics & Microbiology
T32 Scholar, NIAID
Immunology and virology
Mentors: Bryce Chackerian, PhD; Steven Bradfute, PhD



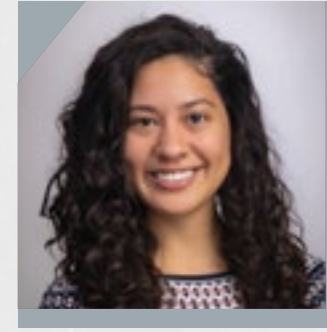
Jaclyn A. Rivas, PhD Candidate
Internal Medicine
T32 Scholar, NIGMS
Studying the pathogenic role of the colonic epithelium in the etiology of metabolic disease
Mentors: Eliseo Castillo, PhD; Julie In, PhD



Arasely Rodriguez, PhD Candidate
 Neurosciences
 T32 Scholar, NIAAA
Therapeutic intervention of impaired enrichment-mediated neurogenesis in prenatal alcohol-exposed mice.
 Mentor: Lee Anna Cunningham, PhD



Isabella Romano, PhD Candidate
 Molecular Genetics & Microbiology
 F31 Scholar, NIDA
Virus-like particle vaccines targeting opioids
 Mentor: Kathryn Fietze, PhD



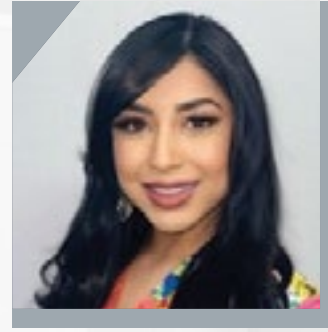
Miriam Vélez-Bermúdez, PhD, MPH
 Center for Healthcare Equity in Kidney Disease
 Postdoctoral Fellow, NIMHD
Health and health care equity in kidney disease populations
 Mentor: Larissa Myaskovsky, PhD



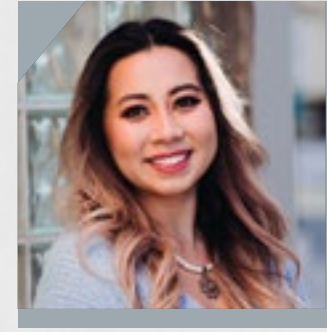
Jordan Weisend, PhD
 Neurosciences
 T32 Scholar, NIH
Using brain slice electrophysiology to determine the underlying cell and molecular mechanisms associated with divergent tissue outcomes in spreading depolarization.
 Mentor: C. William Shuttleworth



Emmanuel Rosas, PhD
 Postdoctoral Fellow, Internal Medicine
 ASERT, NIGMS
Focusing on the role of G protein-coupled estrogen receptor (GPER) in the development of anti-hormone resistance and whether novel anti-hormone approaches that prevent cross-activation of GPER can reduce anti-hormone resistance in Era-positive breast cancers.
 Mentor: Eric Prossnitz, PhD



Laura Santos-Medina, PhD Candidate
 Cell Biology & Physiology
 T32 Scholar, NIGMS
Environmental toxicology and cancer biology.
 Mentor: Nancy Kanagy, PhD



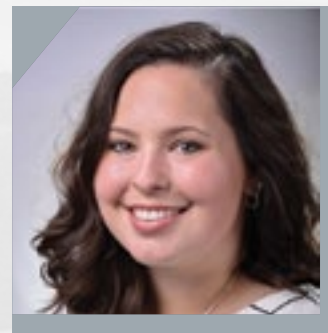
Gaokhia Yang, PhD Candidate
 Neurosciences
 T32 Scholar, NIGMS
Profiling actively translating proteins during memory consolidation.
 Mentor: Sam McKenzie, PhD



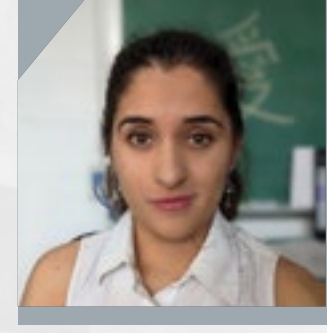
Sydnee Yazzie, PhD Candidate
 Nursing
 T32 Scholar, NIGMS
Using a menopause mouse model to examine biological mechanisms, such as inflammation following acute woodsmoke exposure, and the potential effects of estradiol supplementation.
 Mentor: Katherine Zychowski, PhD



Andrew Skidmore, PhD
 Postdoctoral Fellow, Internal Medicine
 ASERT, NIGMS
Focusing on how the microbiome of the deer mouse, the host species of the Sin Nombre hantavirus, could influence the transmission of this virus to humans.
 Mentor: Steven Bradfute, PhD



Megan Tuineau, PhD Candidate
 Cell Biology & Physiology
 T32 Scholar, NHBLI
Determining the mechanisms and effects of altered subcellular localization of acid-sensing ion channel 1a in pulmonary arterial smooth muscle cells from rodent models of chronic hypoxia-induced pulmonary hypertension.
 Mentor: Nikki Jernigan, PhD



Justine Zimmerly, PhD Candidate
 Neurosciences
 T32 Scholar, NIAAA
Examining the impacts of mild stress in adolescence and adulthood on the TLR4-NLRP3 response and subsequent development of anxiety-like behaviors in a mouse model of prenatal alcohol exposure.
 Mentor: Erin Milligan, PhD

EXCELLENCE IN RESEARCH AWARDS 2023

Six University of New Mexico Health Sciences faculty members were honored on Nov. 16, 2023, with UNM's 15th annual Excellence in Research Awards.

The scientists received the awards in a ceremony held at the Domenici Center for Health Sciences Education. Each was nominated by their peers, said Hengameh Raissy, PharmD, Interim Vice President for Research, Health Sciences.

"These awards remind us the importance of research as we advance science and train the next generation of the scientists," Raissy said. "They allow us to recognize individuals from across the research spectrum - we have awardees representing each stage of research, from basic and pre-clinical to clinical trial and population science to implementation."

The awards were presented in six categories.



Annette Crisanti, PhD, Katherine Zychowski, PhD, Michelle Harkins, MD, James Nawarskas, PharmD, Lee Anna Cunningham, PhD, and Dusanka Deretic, PhD



Annette Crisanti, PhD

Psychiatry & Behavioral Sciences, *Population Science*

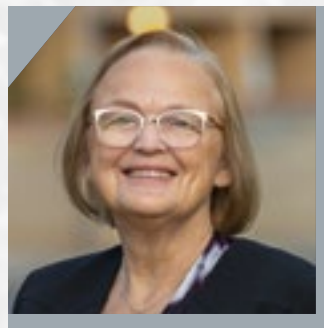
Annette Crisanti, PhD, a psychiatric epidemiologist in the Department of Psychiatry & Behavioral Sciences, received the Population Science Research award. Her research focuses on increasing access to behavioral health services for individuals with mental illness and/or substance use disorders, with the long-term goal of improving population health outcomes.



Lee Anna Cunningham, PhD

Neurosciences, *Team Science*

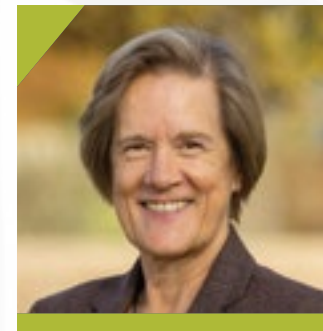
Lee Anna Cunningham, PhD, a professor in the Department of Neurosciences, received the Team Science award. She has helped to plan, establish and guide center-level programs at UNM Health Sciences, including two Centers of Biomedical Research Excellence P20 grants funded by the National Institute of General Medical Sciences and the New Mexico Alcohol Research Center P50 grant funded by the National Institute on Alcohol Abuse and Alcoholism.



Dusanka Deretic, PhD

Ophthalmology & Visual Sciences, *Basic Science*

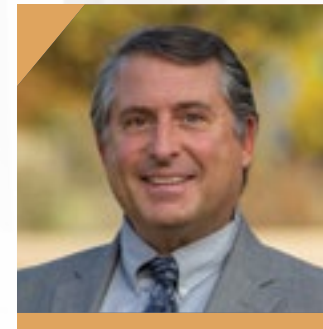
Dusanka Deretic, PhD, a professor in the Department of Ophthalmology & Visual Sciences, won the Basic Science award for her study of retinal photoreceptor cell biology, in particular the molecular mechanisms underlying rhodopsin trafficking and rod outer segment (ROS) membrane renewal.



Michelle Harkins, MD

Internal Medicine, *Clinical Science*

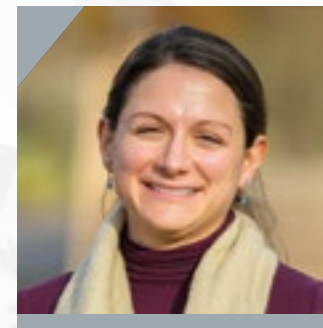
Michelle Harkins, MD, a professor in the Department of Internal Medicine and chief of the Division of Pulmonology, received the Clinical Science award. Harkins has led UNM's COVID-19 clinical trials and has published a dozen COVID-related articles, with several in high-impact journals such as JAMA and Lancet Respiratory Medicine.



James Nawarskas, PharmD

College of Pharmacy, *Scholarship of Teaching and Learning*

James Nawarskas, PharmD, an associate professor in the College of Pharmacy, received the Scholarship of Teaching and Learning award. He has been honored multiple times as the Teacher of the Year and pioneered evidence-based active learning methods long before they gained widespread popularity.



Katherine Zychowski, PhD

College of Nursing, *Junior Faculty*

Katherine Zychowski, PhD, an assistant professor in the College of Nursing, received the Junior Faculty Research award. She is a nationally recognized expert on inflammation caused by inhaled dusts from mining operations and other sources of air pollution, such as wildfires.

University of New Mexico Health Sciences research centers and institutes play a prominent role in many critical national networks. We thank the directors, faculty, staff and students who enrich the work of these groups. These entities include a range of research cores and shared facilities. Here's an overview:

Extramurally Funded Centers & Institutes

- UNM Clinical & Translational Science Center (UL TR001449, Pandhi/Campen)
- UNM Comprehensive Cancer Center (P30CA118100, Sanchez)
- The New Mexico Integrative Science Program Incorporating Research in Environmental Sciences Center (NM-INSPIRES) (P30ES032755, Blossom)
- Autophagy, Inflammation & Metabolism Center (NIH/COBRE) (P20GM121176, Deretic)
- Center for Brain Recovery & Repair (NIH/COBRE) (P20GM109089, Shuttleworth)
- New Mexico Alcohol Research Center (P50 AA022534, Savage)
- Transdisciplinary Research, Engagement & Equity Center for Advancing Behavioral Health (U54MD004811, Cacari Stone).
- Center for Metals in Biology & Medicine (NIH/COBRE) (P20GM120422, Campen)
- Center for Native American Environmental Health Equity Research (P50MD015706, Lewis/ MacKenzie).
- Metal Exposure Toxicity Assessment on Tribal Lands in the Southwest Superfund Research Center (P42 ES025589, Lewis/Cerrato)
- New Mexico Exploratory Alzheimer's Disease Research Center (P20 AG068077, Rosenberg)
- Center for Development & Disability (various sponsors, Moriarta)
- Navajo Birth Cohort Study/Environmental Influences on Child Health Outcomes (UH3 OD023344, MacKenzie)
- HEALTHy Brain and Child Development National Consortium (U01 DA055359P, Bakhireva/Leeman)
- Surveillance Epidemiology & End Results Program (HHSN261201800141, Wiggins)
- Prevention Research Center (U48DP006379, Davis)
- IdEA State Pediatric Clinical Trial Network (UG10D024947-03, Raissy/Kong)

- Project ECHO (various sponsors, Arora)
- NIDA Clinical Trials Network, Southwest Node (UG1DA049468, Page)
- Knowledge Management Center for Illuminating the Druggable Genome (U24CA224370, Edwards)
- Community Oncology Research Program (NCORP) Minority/Underserved Community Sites (UG1CA189856, Muller)
- Eunice Kennedy Shriver NICHD Cooperative Multicenter Neonatal Research Network (UG1HD053089)

Other Centers, Institutes & Networks

- Center for Accelerating Dissemination & Implementation Science (Adsul)
- Center for Infectious Disease & Immunity (Wu)
- Center for Disaster Medicine (Banks)
- Institute for Ethics (Bolton)
- Center for Forensic Imaging (Adolphi)
- Center for Global Health (Perkins)
- Center for HPV Prevention (Wheeler)
- Memory & Aging Center (Rosenberg)
- Center for Molecular Discovery (Buranda)
- Center for Native American Health (Parker)
- Institute for Resilience, Health & Justice (Girardet)
- Center for Health Equity & Preparedness (Couig)
- Center for Healthcare Equity in Kidney Disease (Myaskovsky)
- Center for Participatory Research (Wallerstein)
- Center of Excellence for Orthopedic Surgery & Rehabilitation (Schenck)
- Substance Use Research & Education Center (Bakhireva)
- Diabetes Prevention & Outcomes Center (Schade)
- Epidemiology & Prevention Interdisciplinary Center for Sexually Transmitted Infections (Wheeler)
- Center for Innovation in Health & Education (Frank)
- Kidney Institute of New Mexico (Wagner)

Signature Research Programs

- Brain & Behavioral Health Institute (Bakhireva & Bhaskar)
- Cardiovascular & Metabolic Disease (Liu)
- Infectious Disease & Immunity (Cannon)
- Child Health Research (Girardet)
- Environmental Health Sciences (Campen)

Contracts & Grants 2023

Office of the Executive Vice President	36
Office of the Vice President	36
Center for Infectious Disease & Immunity	36
Center for Memory & Aging	36
Office of Research	36
Health Sciences Library & Information Center	36
Clinical & Translational Science Center	36
College of Nursing	37
College of Pharmacy	37
College of Population Health	39
School of Medicine	39
Anesthesiology & Critical Care Medicine	39
Biochemistry & Molecular Biology	39
Cell Biology & Physiology	39
Comprehensive Cancer Center	40
Dental Medicine	42
Dermatology	42
ECHO Institute	42
Emergency Medicine	43
Family & Community Medicine	44
Internal Medicine	45
Molecular Genetics & Microbiology	47
Neurology	48
Neurosciences	48
Obstetrics & Gynecology	49
Office of the Medical Investigator	50
Department of Ophthalmology	50
Orthopaedics & Rehabilitation	50
Pathology	51
Pediatrics	51
Psychiatry & Behavioral Sciences	54
Radiology	56
Surgery	56
UNM Hospital	56
UNM Medical Group, Inc	56



EXECUTIVE VICE PRESIDENT FOR HEALTH SCIENCES

Pilar Sanjuan

National Institute on Drug Abuse
Ecological Momentary Assessment of Posttraumatic Stress Disorder and Prenatal Bonding Predicting Opioid Use Disorder Relapse Among Pregnant Women - Non-Specific Supplement \$214,385

Darren Braude

Jemez Mountain Trail Runs
EMS Medical Director (Event Medicine) \$2,000

VICE PRESIDENT FOR RESEARCH HEALTH SCIENCES

A. Robb McLean

Department of Health
PA and/or NP Services at DOH NMBHI \$137,000

N.M. Department of Health

Physician, PA, and NP Services
Turquoise Lodge Hospital \$75,000

Elizabeth Kocher

Sandia Pueblo
Locum Tenens Services - Continuation \$25,000

Center for Infectious Diseases & Immunity

Michelle Ozbun

National Institute of Allergy & Infectious Diseases
Biology of Infectious Disease and Inflammation - Continuation \$281,124

Terry Wu

Advanced Technology International
MOD 11 Nanolipoprotein Particle-Based Subunit Vaccine Against Pneumonic Tularemia - Non-Specific Supplement \$2,152,978

Advanced Technology International

Mod 9 and Mod 10 - Nanolipoprotein Particle-Based Subunit Vaccine Against Pneumonic Tularemia - Non-Specific Supplement \$924,288

Lawrence Livermore National Laboratory

LLNL STNI-17-TA1-1-0042 - Non-Specific Supplement \$134,559

Lawrence Livermore National Laboratory

LLNL STNI-17-TA1-1-0042 - Non-Specific Supplement Mod 3 \$65,000

Center for Memory & Aging

Gary Rosenberg

National Institute on Aging
NM Alzheimer's Disease Research Center - Continuation \$1,019,037

University of Southern California

Long-Term Nicotine Treatment of Mild Cognitive Impairment \$333,000

Bill Shuttleworth

New Mexico State University
INBRE Dementia and Biomarker Disclosure in Acoma Indians \$83,682

OFFICE OF RESEARCH

Hengameh Raissy

Bureau of Health Resources
Development
UNM Health Sciences Lab Facilities Renovation \$1,500,000

N.M. Higher Education Department

FY2023 Award Cycle: Technology Enhancement Funds \$2,025,000

Chloe Stoffel

Center for Health Care Strategies
ACHT Pilot Phase \$64,794

HEALTH SCIENCES LIBRARY & INFORMATICS CENTER

Kelleen Maluski

National Network of Libraries of Medicine
Trauma-Informed Care Training \$9,583

CLINICAL & TRANSLATIONAL SCIENCE CENTER

Justin Baca

Abbott Point of Care Inc.
Abbott Pivotal I-STAT Troponin POC - Specific Supplement \$187,500

Autonomous Medical Devices Inc.

AMDI-CSP-00005 \$767,706

Los Alamos National Laboratory

DTRA/LANL - The Human Breath Baseline: A Keystone for Breath Biomarker Studies - Year 3 \$107,721

Mesa Photonics, LLC

Mesa Photonics: SALIVA \$17,933

RingIR

NAMSA/RingIR US035638 \$354,560

TriCore Reference Laboratories

T.O. # 37 Ventura
Prototypes/tricore \$22,976

Lisa Cacari-Stone

Westat
WEAVE NM 2.0 \$253,574

Westat

WEAVE NM 2.0 \$177,063

Judy Cannon

National Center for Advancing Translational Sciences
Clinical & Translational Science Center KL2 2020-2025 - Continuation Year 4 \$394,876

Andrew Carlson

Johns Hopkins University
BEACH - Continuation \$14,302

Andrew Carlson

Johns Hopkins University School of Medicine
A Placebo-Controlled Efficacy in INPH Shunting Trial \$27,521

Johns Hopkins University School of Medicine

A Placebo-Controlled Efficacy in INPH Shunting Trial - Continuation \$128,962

Johns Hopkins University School of Medicine

REASSESS ICH \$27,345

Eliseo Castillo

National Institute of Environmental Health Sciences
Defining the Harmful Effects of Microplastics on Gastrointestinal Health \$383,236

Walter Dehority

University of Arkansas
MoVeUP APP (Quantitative) Study - Continuation \$88,237

Daryl Domman

Centers for Disease Control and Prevention
Genomic Surveillance of SARS-CoV-2 in New Mexico and the Mountain West \$782,451

Kathryn Frieze

National Institute of Allergy & Infectious Diseases
Bacteriophage Virus-Like Particle Vaccines for Chlamydia Trachomatis Urogenital Infection \$383,117

Sundeep Guliani

NYU Langone
PE-TRACT \$103,842

Michelle Harkins

Vanderbilt University Medical Center
PEER (ACTIV 4d RAAS) - Continuation \$81,144



Hellen Ko

RTI International
WEANING - ACT NOWS
Continuation \$59,743

Alberta Kong

National Institutes of Health Office of the Director
ISPCTN Vasquez Diversity Specific Supplement: Perceptions on the Use of Medication for Weight Management From Teens, Parents and Pediatricians in the Southwest \$6,100

University of Arkansas

Protocol Chair for the Obesity Study (Previously Phentermine) - YEAR 2 \$30,337

Shuguang Leng

University of Nevada, Las Vegas
(Round 9 - MSPP) Novel Methods of Assessing Household Wood Smoke Exposure - Continuation \$57,943

Sofia Markee

RTI International
ESC - ACT NOWS - Eat, Sleep, Console
Continuation \$49,431

Jessie Maxwell

University of Arkansas
DCOC Leadership Committee - Maxwell - Year 2 \$24,798

University of Arkansas

Junior Pilot Protocol Development - ISPCTN \$40,448

Nancy Pandhi

National Center for Advancing Translational Sciences
Clinical & Translational Science Center UL1-Research Supplements to Promote Diversity in Health-Related Research \$45,529

National Center for Advancing Translational Sciences

HSC Clinical & Translational Science Center UL1 2020-2025 - Continuation Y4 \$2,744,735

University of Nevada, Las Vegas

Institutional Development Award Program Infrastructure for Clinical and Translational Research: BERD - Continuation \$42,691

University of Nevada, Las Vegas

Institutional Development Award Program Infrastructure for Clinical and Translational Research: CEO - Continuation \$23,425

University of Nevada, Las Vegas
Institutional Development Award Program Infrastructure for Clinical and Translational Research: PDC - Continuation \$153,001

University of Nevada, Las Vegas
Institutional Development Award Program Infrastructure for Clinical and Translational Research: T&E - Continuation \$47,362

Eric Prossnitz

New Mexico Start-Up Factory
Development of an Educational Product for Accelerating Solutions for Commercialization and Entrepreneurial Development in Western IDeA States \$40,448

Hengameh Raissy

Eunice Kennedy Shriver National Institute of Child Health and Human Development
ISPCTN-UNM Pediatric Clinical Trials Center in IDeA States Pediatric Clinical Trials - Continuation \$416,580

University of Arkansas

VRAM - ISPCTN \$6,933

University of Utah

RECOVER Oversight Committee Meetings \$52,000

Kristin Raschke

University of Arkansas
BREATHE Study: Bronchitis Recovery and the Use of High Efficiency Particle Air Filters \$58,644

COLLEGE OF NURSING

Christine Cogil

Bureau of Health Workforce
Advanced Nursing Education Workforce \$650,000

Mary Couig

U.S. Department of Veterans Affairs
Nurses on the Frontline Caring for Patients With COVID-19: Lived Experiences (Couig-IPA) \$39,105

U.S. Department of Veterans Affairs
VA Office of Nursing Services IPA - Continuation \$103,605

Stephen Hernandez

Geneva Foundation
Increasing Resiliency in Air Force Personnel: a Multi-Site Trial \$415,000

Katie Kivlighan

W.K. Kellogg Foundation
UNM Volunteer Birth Companion Strategic Planning and Development \$200,000

Roberta Lavin

American Association of Colleges of Nursing
Building COVID-19 Vaccine Confidence Among Nurses and At-Risk Communities \$4,300

U.S. Department of Veterans Affairs
Nurses on the Frontline Caring for Patients With COVID-19: Lived Experiences (Lavin-IPA) \$47,256

Janice Martin

City of Albuquerque
Geriatric Education and Health Maintenance & HUD Expansion \$120,000

El Pueblo Health Service
El Pueblo Health Services FY23 \$107,197

Carolyn Montoya

California State University
California State University ANEW - Continuation \$10,000

N.M. Higher Education Department
Nursing Faculty Endowment Fund \$6,500,000

Presbyterian Healthcare Services
ANE-NPR Program - Continuation \$33,418

Patricia Watts-Kelley

N.M. Higher Education Department
Accelerated BSN HED Nursing Expansion \$1,174,100

Katherine Zychowski Bufford

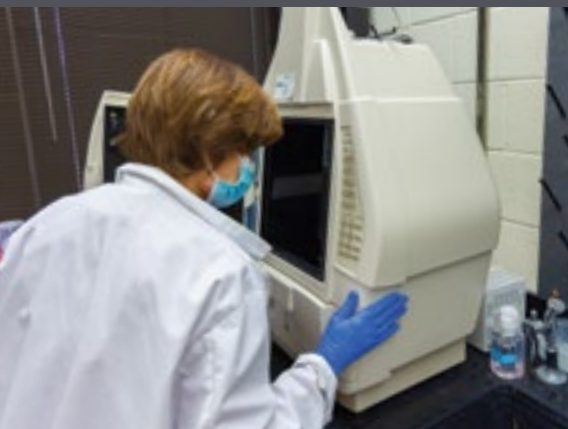
National Institute of Environmental Health Sciences
sParticulate Matter-Induced Pulmonary Exosomes and the Lung-Brain Axis - Continuation \$189,375

COLLEGE OF PHARMACY

Ludmila Bakhireva

National Institute on Alcohol Abuse & Alcoholism
ENRICH-2: Stress-Reactivity and Self-Regulation in Infants With Prenatal Alcohol Exposure \$651,987

National Institutes of Health
18/24 the Healthy Brain and Child Development National Consortium \$1,187,489



National Institutes of Health
18/24 The Healthy Brain and Child Development National Consortium \$1,187,315

University of California, San Diego
HBCD Peer Navigator \$47,374

Amanda Barkley-Levenson
National Institute on Alcohol Abuse & Alcoholism

Identification and Characterization of Novel Genetic Mechanisms in Alcohol Use Disorder and Excessive Drinking \$249,000

National Institute on Alcohol Abuse & Alcoholism
Identification and Characterization of Novel Genetic Mechanisms in Alcohol Use Disorder and Excessive Drinking \$73,660

Sarah Blossom
National Institute of Environmental Health Sciences
New Mexico Integrative Science Program Incorporating Research in Environmental Sciences \$1,297,636

National Institute of Environmental Health Sciences
New Mexico Integrative Science Program Incorporating Research in Environmental Sciences \$1,297,636

National Institutes of Health
Epigenetic Modulation of CD4 + T Cell Differentiation and Autoimmunity by Trichloroethylene \$268,596

Ladonna Bonnin
Denver Health and Hospital Authority
Researched Abuse, Diversion and Addiction-Related Surveillance System \$12,500

Matthew Campen
Eunice Kennedy Shriver National Institute of Child Health and Human Development
Influence of Dietary Lipids on Gestational Outcomes of Ozone Exposure \$40,234

National Institute of Environmental Health Sciences
13th International Particle Toxicology Meeting \$10,000

National Institute of Environmental Health Sciences
Contaminant Metal Content in Wildfire Smoke and Neuroinflammation \$606,398

National Institute of Environmental Health Sciences
Mechanisms of Vascular Toxicity From Inhaled Toxicants \$324,648

National Institutes of Health
Acceleration of Circulatory and Neurological Aging Due to Wildfire Exposures \$756,454

National Institutes of Health
N.M. Center for Metals in Biology and Medicine - Specific Supplement - Equipment \$250,000

National Institutes of Health
New Mexico Center for Metals in Biology and Medicine \$2,248,898

Seth Daly
National Institute of Allergy & Infectious Diseases
Vaccine-Mediated Control of Bacterial Virulence Regulation and Infection \$378,750

National Institute of Allergy & Infectious Diseases
VLP-Based Vaccines for Targeting Staphylococcus Aureus B-Barrel Toxins \$190,625

National Institute of Allergy & Infectious Diseases
VLP-Based Vaccines for Targeting Staphylococcus Aureus B-Barrel Toxins \$228,750

Melanie Dodd
First Choice Community Healthcare
Pharmacist Consultant Agreement \$200,000

First Nations Community Healthsource, Inc.
First Nations Community Healthsource, Inc. \$25,000

New Mexico Office of Superintendent of Insurance
OSI Health Plan Drug Formularies Review \$30,000

Esther Erdei
Massachusetts Institute of Technology
Short Courses for Teaching Gene-Environment Interactions With a Focus on Environmental Justice Communities \$37,800

National Institute of Environmental Health Sciences
CRST COVID-19 - Wayakta He \$158,832

NYU Langone
Research to Action: Assessing and Addressing Community Exposures to Environmental Contaminants Under the Leadership of NYU Dept. of Environmental Medicine \$46,951

NYU Langone
Research to Action: Assessing and Addressing Community Exposures to Environmental Contaminants Under the Leadership of NYU Dept. of Environmental Medicine \$54,829

Linda Felton
Biomedical Research Institute of New Mexico
Formulation Development Services \$350,000

U.S. Department of Veterans Affairs
Formulation and Batch Records for the VA Medical Center in Albuquerque, N.M. \$59,499

U.S. Department of Veterans Affairs
Formulation and Batch Records for the VA Medical Center in Albuquerque, N.M. \$7,443

Changjian Feng
National Institute of General Medical Sciences
Equipment Supplement to Defining the Conformational Control of Nitric Oxide Synthases by a Multipronged Approach \$89,124

National Institutes of Health
Defining the Conformational Control of Nitric Oxide Synthases by a Multipronged Approach \$314,181

National Institutes of Health
Rapiflex MALDI-TOF/TOF Mass Spectrometer \$600,000

Donald Godwin
McKesson Foundation
Increasing Diversity of the Pharmacy Workforce and Improve Health Outcomes \$260,250

Laurie Hudson
National Institute of Environmental Health Sciences
Mutational Signatures of a Combined Environmental Exposure: Arsenic and Ultraviolet Radiation \$503,327

Bernadette Jakeman
Merck & Company, Inc.
Evaluating Vaccine Hesitancy in Gender Diverse Patients \$67,782

Johnnye Lewis
National Institute of Environmental Health Sciences
UNM Metal Exposure Toxicity Assessment on Tribal Lands in the Southwest Superfund Research Program \$1,839,044

Debra MacKenzie
National Institutes of Health
Center for Native American Environmental Health Equity Research \$1,358,095

National Institutes of Health
Understanding Risk Gradients From Environment on Native American Child Health Trajectories: Toxicants, Immunomodulation, Metabolic Syndromes, & Metals Exposure \$4,249,552

Susan Smolinske
Health Resources & Services Administration
Poison Center Stabilization and Enhancement Program \$148,276

Krystal Ward
Bureau of Health Workforce
Health Professions Student Loans, Including Primary Care Loans/Loans for Disadvantaged Students \$180,000

COLLEGE OF POPULATION HEALTH

Lisa Cacari-Stone
W.K. Kellogg Foundation
Advance Health Equity for Children and Families in New Mexico \$25,000

W.K. Kellogg Foundation
Health Equity Summit Sponsorship \$10,000

Tracie Collins
N.M. Department of Finance & Administration
SFRF/School of Public Health \$10,000,000

N.M. Department of Health
NM DOH - Academic Health Department - Continuation \$757,759

UnitedHealthcare of New Mexico, Inc.
Social Determinants of Health - Developing Interventions \$90,000

Robert Frank
N.M. Human Services Department
The New Mexico Center for Health Policy \$1,177,565

Elizabeth Yakes Jimenez
Holy Cross of Taos
ROAMS in NE NM - Specific Supplement \$20,000



Francisco Soto Mas
Bernalillo County
Bernalillo County Senior Services Project - Specific Supplement \$2,688

University of Texas Health Center at Tyler
University of Texas Health Center at Tyler \$2,840

Laura Nervi
Civilian Research and Development Foundation Global Systems Innovation Network for Cancer Control \$54,995

Rebecca Rae
Conrad N. Hilton Foundation
Indigenous Evaluators Network \$50,000

New Mexico Community Capital
The Future Is Indigenous Women \$60,000

Andrew Rowland
N.M. Department of Health
Helping Us Grow Strong Study \$26,375

Kristine Tollestrup
Tulane University
ACA - Public Health Training Centers - Continuation Year 5 \$10,000

SCHOOL OF MEDICINE

Anesthesiology & Critical Care Medicine

Radhika Grandhe
Bioventus
Bioventus/ Bioness: CP-00001 \$74,172

Medtronic
UNM Pain Medicine Fellowship 23-24: Medtronic \$20,000

John Rask
Vanderbilt University Medical Center
Simulation Multicenter Project - Continuation \$14,408

Karin Westlund-High
Defense Health Program
A New Treatment for Acute Pancreatitis Injury and Pain \$1,393,217

National Institute of Neurological Disorders and Stroke
Neuroimmune Mechanisms of a Humanized CCK-B Receptor Scfv As Therapy for Chronic Pain Patients - Diversity Supplement \$77,837

Biochemistry & Molecular Biology

Laura De Lorenzo Barrios
University of San Diego
sRCN UBE \$2,150

Meilian Liu
National Institute of Diabetes and Digestive and Kidney Diseases
Transcriptional Control of High-Thermogenic Adipocyte Development \$373,420

Vallabh Shah
George Washington University
DPPOS-4 AD/ADRD Project \$328,489

National Institute on Minority Health & Health Disparities
Standing Strong in Tribal Communities: Addressing Elder Falls Disparity - Continuation \$540,356

Nathan Zaidman
National Institute of Diabetes and Digestive and Kidney Diseases
Gpr116 Regulation of Renal Acid Excretion \$249,000

Cell Biology & Physiology

Sara G.M. Piccirillo
American Association for Cancer Research
The Impact of Tumor-Treating Fields on Residual Disease in Glioblastoma - Non-Specific Supplement \$25,000

Amy Gardiner
American Physiological Society
Regulation of Mir-150-5p in Brain Microvascular Endothelial Cells and Physiological Impact on the Neurovascular Unit in Ethanol Exposure \$28,300

Laura Gonzalez-Bosc
American Heart Association
Disequilibrium in Immune Homeostasis in Hypoxic Pulmonary Hypertension Pathogenesis \$100,000

Nancy Kanagy
Exhalix, LLC
Transdermal H2s Sensing Device for Monitoring Peripheral Artery Disease \$181,975

Vijay Naik
National Heart, Lung, and Blood Institute
Regulation of H2s Signaling in Vascular Function \$537,645

Thomas Resta
National Heart, Lung, and Blood Institute
2022 RPPR - Minority Institutional Research Training Program (T32) \$471,759

National Heart, Lung, and Blood Institute
Cholesterol Regulation of EGFR-Dependent Vasoconstriction in Chronic Hypoxia-induced Pulmonary Hypertension - Non-Specific Supplement \$942

National Heart, Lung, and Blood Institute
RPPR Cholesterol Regulation of EGFR-Dependent Vasoconstriction in Chronic Hypoxia-Induced Pulmonary Hypertension (F31) \$38,143

Comprehensive Cancer Center

Sarah Adams
National Cancer Institute
Mechanisms of Selective Therapeutic Synergy of PARP-Inhibition and CTLA4 Blockade Engaged by Interferon-Gamma in the Ovarian Tumor Microenvironment \$342,987

Ovarian Cancer Alliance of Greater Cincinnati
Impact of Immunomodulatory Effects of Estrogen on BRCAM Ovarian Cancer Susceptibility \$115,000

V Foundation
VSTM5 As a Novel Treatment Predictive Biomarker for CTLA4 Immune Therapy in Ovarian Cancer \$800,000

Prajakta Adsul
N.M. Department of Health
Cancer Prevention and Control Program for New Mexico \$5,000

N.M. Department of Health
Cancer Prevention and Control Program for New Mexico - Specific Supplement \$30,000

World Health Organization
Theory-Driven Assessment of Implementation Strategies and Context to Inform the WHO Cervical Cancer Screening and Treatment Guideline Implementation Recommendations \$42,943

Eric Barteo
National Cancer Institute
Impact of Extracellular Potassium on Oncolytic Therapy \$191,231

National Cancer Institute
Impact of Extracellular Potassium on Oncolytic Therapy - Non-Specific Supplement \$16,998

Jessica Belmonte
New Mexico Cancer Care Alliance
Clinical Trial Phase 1/2 \$194,655

Marianne Berwick
University of Nevada, Reno
Tackling Cancer Disparities: a Bayesian Approach for Personalized Pathway Analysis and Risk Prediction \$42,099

University of North Carolina
Identification of Lethal Melanomas at the Time of Diagnosis (Resub) \$62,022

Ursa Brown-Glaberman
New Mexico Cancer Care Alliance
Clinical Trial Phase 2/3 \$186,335

Shashank Cingam
New Mexico Cancer Research Alliance
Clinical Trial Phase 2 \$186,975

Zoneddy Dayao
American Cancer Society
Lodging Plan for UNM Comprehensive Cancer Center - 2023/2024 \$25,000

American Cancer Society
Transportation Plan for UNM Comprehensive Cancer Center 2023/2024 \$20,370

N.M. Department of Health
Development and Delivery of Cancer Survivorship Cancer Plans \$25,000

Jennifer Gillette
American Cancer Society
University of New Mexico Cancer- PREP \$660,000

Yan Guo
Indiana University
The Role of LMO2 in the Pathogenesis of T-cell Leukemia \$4,203

Richard Harvey
Brigham and Women’s Hospital
Biomarker, Imaging and Quality of Life Studies Funding Program \$11,026

Public Health Institute
Phase 3 Randomized Trial of Inotuzumab Ozogamicin for Newly Diagnosed High-Risk B-ALL; Risk-Adapted Post-Induction Therapy for High-Risk B-ALL, Mixed Phenotype Acute Leukemia, and Disseminated B-LLy (1732 Study) - Continuation \$226,155

Public Health Institute
Phase 3 Randomized Trial of Inotuzumab Ozogamicin for Newly Diagnosed High-Risk B-ALL; Risk-Adapted Post-Induction Therapy for High-Risk B-ALL, Mixed Phenotype Acute Leukemia, and Disseminated B-LLy (1732 Study) - Continuation \$229,521

Neda Hashemi
New Mexico Cancer Care Alliance
Clinical Trial Phase 3 \$140,108

New Mexico Cancer Care Alliance
Clinical Trial Phase 3 \$188,255

Miria Kano
University of Texas MD Anderson Cancer Center
Sexual and Gender Minority Cancer Curricular Advances for Research and Education \$27,270

Atul Kumar
New Mexico Cancer Care Alliance
Clinical Trial Phase 1/2 \$186,975

New Mexico Cancer Care Alliance
Clinical Trial Phase 2 \$175,135

New Mexico Cancer Care Alliance
Clinical Trial Phase 2 \$186,335

New Mexico Cancer Care Alliance
Clinical Trial Phase 3 \$178,335

Kimberly Leslie
Defense Health Program
Treating Advanced Uterine Endometrial Cancer by Reactivating P53 \$1,821,136

National Cancer Institute
Targeted Therapy for Endometrial Cancer \$287,850

Li Luo
Colorado School of Public Health
A Population-Based Study of Ketorolac and Ovarian Cancer Survival \$141,275

Colorado School of Public Health
A Population-Based Study of Ketorolac and Ovarian Cancer Survival - Continuation \$120,566

Erika Maestas
New Mexico Cancer Care Alliance
Clinical Trial Phase 3 \$178,335

Peng Mao
National Cancer Institute
Mechanism of Transcription-Coupled DNA Repair and Its Impact on Cancer Mutations \$321,623

University of California, San Francisco
The Mutational Mechanisms Shaping Melanocytes in Human Skin \$51,403

Washington State University
Identifying Recurrent Driver Mutations in Skin Cancers by Targeted UV Damage Sequencing \$38,125

Dario Marchetti
Defense Health Program
Roles of CTC: PMN-MDSC Clusters in Melanoma Brain Metastasis \$305,000

National Cancer Institute
Mechanisms of Melanoma Brain Metastasis by CTCs Isolated From Patients’ Blood \$329,702

National Cancer Institute
Mechanisms of Melanoma Brain Metastasis by CTCs Isolated From Patients’ Blood - Non-Specific Supplement \$29,306

Colleen McCormick
New Mexico Cancer Care Alliance
Clinical Trial Phase 2 \$178,815

New Mexico Cancer Care Alliance
Clinical Trial Phase 3 \$184,735

New Mexico Cancer Care Alliance
Clinical Trial Phase 3 \$188,255

Shiraz Mishra
National Cancer Institute
Cancer Research - Scholarship and Training Experiences in Population Sciences \$159,815

National Cancer Institute
Enhancing Prevention Pathways Towards Tribal Colorectal Health \$876,311

Carolyn Muller
National Cancer Institute
NCORP - Continuation \$1,668,973

New Mexico Cancer Care Alliance
Clinical Trial Phase 2 \$188,255

New Mexico Cancer Care Alliance
Clinical Trial Phase 3 \$181,535

Jacklyn Nemunaitis
New Mexico Cancer Care Alliance
Clinical Trial Phase 2 \$184,735
New Mexico Cancer Care Alliance
Clinical Trial Phase 3 \$188,255

Scott Ness
National Institute of Dental and Craniofacial Research
Mutations and Target Genes in Adenoid Cystic Carcinoma \$445,398

Michelle Ozburn
American Cancer Society
Diversity in Cancer Research Summer Internship IRG Supplement \$88,000

American Cancer Society
Institutional Research Grant - Undergraduate Program Summer 2022 \$33,000

Eric Prossnitz
National Cancer Institute
G Protein-Coupled Estrogen Receptor and Breast Carcinogenesis \$346,862

National Cancer Institute
Molecular Mechanisms and Applications of Novel ER/GPER-Selective Ligands \$336,705

National Cancer Institute
Molecular Mechanisms and Applications of Novel ER/GPER-Selective Ligands - Non-Specific Supplement \$188,832

National Cancer Institute
Role of GPER in Obesity and Lipid Metabolism \$44,294

Avinash Sahu
Human Immunome Project, Inc.
Human Vaccines Project Michelson Prizes \$58,860

Yolanda Sanchez
National Cancer Institute
CCSG: Administrative Supplement to Strengthen NCI-Supported Community Outreach Capacity Through Community Health Educators of the National Outreach Network \$114,999

National Cancer Institute
CCSG: Administrative Supplement to Strengthen the Research, Training and Outreach Capacity of the Geographic Management of Cancer Health Disparities Program \$249,999

National Cancer Institute
Dissemination of a Colorectal Cancer Screening Program Across American Indian Communities in the Southern Plains and Southwest United States \$673,672

National Cancer Institute
University of New Mexico Cancer Center Support Grant \$2,300,943

National Cancer Institute
We Ask Because We Care: Enhancing Sexual Orientation and Gender Identity Data Collection in New Mexico Cancer Centers \$149,967

Andrew Sussman
American Cancer Society
Mobilizing Access and Navigation to Oncology Services \$300,000

Klein Buendel
#4corners4health: A Social Media Cancer Prevention Program for Rural Young Adults \$149,738

University of Arizona
Ethnicity and Lung Cancer Survival: A Test of the Hispanic Sociocultural Hypothesis \$19,732

Alan Tomkinson
Lawrence Berkeley National Laboratory
Structural Cell Biology & Physiology of DNA Repair Machines \$68,175

Lovelace Biomedical & Environmental Research Institute
DNA Repair Capacity Assays for Lung Disease Risk Assessment \$45,965

National Cancer Institute
Targeting DNA Ligase I in Ovarian Cancer \$374,061

National Institute of Environmental Health Sciences
Roles of Lig3 and XRCC1 Genes in Genome Stability \$337,705

Charles Wiggins
N.M. Department of Health
DOH BCC Surveillance Project \$6,330

National Cancer Institute
Patterns of Care Study: Diagnosis Year 2020 \$87,431

National Cancer Institute
Surveillance Epidemiology and End Results Program - Continuation \$2,809,331

National Cancer Institute
Surveillance Epidemiology and End Results Program - Specific Supplement \$125,652

North American Association of Central Cancer Registries Inc
Aviator Study \$1,750

Northern Arizona University
The Navajo Cancer Workgroup: Enhancing Impact of Epidemiological Data for Cancer Prevention and Control Among the Navajo People \$98,579

University of Iowa
Development of Small Area Interactive Risk Maps for Cancer Control Efforts \$31,162

Cheryl Willman

National Cancer Institute
 Engagement of American Indians of Southwestern Tribal Nations in Cancer Genome Sequencing \$3,677,926

National Cancer Institute
 Engagement of American Indians of Southwestern Tribal Nations in Cancer Genome Sequencing - Diversity Supplement \$144,977

Emily Wu
 New Mexico Cancer Care Alliance
 Clinical Trial Phase 3 \$178,015

David Y. Lee
 Army Medical Research & Materiel Command
 Epigenetic Regulation of Acinic Cell Carcinoma Development \$530,250

New Mexico Cancer Care Alliance
 Clinical Trial Phase 2 \$185,055

Erika Maestas
 New Mexico Cancer Care Alliance
 Clinical Trial Phase 3 \$178,335

Dental Services

Nathan Boyd
 N.M. Department of Health
 Basic Oral Health Services \$212,000

N.M. Higher Education Department
 Dentist Training to Treat Pediatric and Developmental Patients \$900,000

Gary Cuttrell
 HIV-AIDS Bureau
 HRSA Dental Partnership Program \$263,161

Dermatology

John Durkin
 Arcutis Biotherapeutics, INC
 ARQ-151-315 \$93,338

Pfizer, Inc.
 B7981031- Alopecia Areata \$32,572

Pfizer, Inc.
 B7981040 \$248,627

University Of Pennsylvania
 A Pragmatic Trial of Home Versus Office- Based Narrow Band Ultraviolet B Phototherapy for the Treatment of Psoriasis (LITE Study) - Continuation \$14,200

Nikifor Konstantinov
 Biogen, Inc.
 Blorgen 230LE301-Amethyst \$125,052

ECHO Institute

Sanjeev Arora
 Astho
 Enhancing Community-Level Rapid Response to Pain and Opioid Emergencies - Continuation \$300,000

Bristol-Myers Squibb
 Capacity Building Training Program for Healthcare Workers on a National Program for the Prevention and Control of Beta Thalassemia and Other Hemoglobinopathies in India \$1,050,000

Bureau of Health Workforce
 Creating Cultures of Resiliency for Behavioral Health Providers Through Project ECHO - Continuation \$709,000

Bureau of Indian Affairs
 Using Project ECHO to Enhance Resilience for OJS Law Enforcement and Corrections Officers \$350,000

Centers for Disease Control and Prevention
 Expanding Access to Evidence-Based Diabetes Programs Using Project ECHO \$1,000,000

Chronic Liver Disease Foundation
 Hepatitis C Elimination in New Mexico's Prisons \$100,000

Family Health Centers of San Diego
 FHCS Test to Treat COVID ECHO \$59,745

Health Resources & Services Administration
 South Central AIDS Education and Training Center Program - Year 5 \$4,076,531

JHPIEGO Corporation
 ECHO Support for Building Health Worker Capacity Through the UHI Program in Afghanistan Year 3 - Continuation \$146,722

JHPIEGO Corporation
 ECHO Support for Building Health Worker Capacity Through the Urban Health Initiative Program in Afghanistan - Continuation \$91,379

JHPIEGO Corporation
 Global Reach 2: ECHO Implementation Activities in Sierra Leone \$68,049

JHPIEGO Corporation
 Global Reach 2: ECHO Implementation Activities in Sierra Leone - Continuation \$68,213

JHPIEGO Corporation
 Global Reach 2: ECHO Implementation Activities in Sierra Leone MOD2 \$44,000

JHPIEGO Corporation
 Global Reach 2: ECHO Implementation Activities in Sierra Leone Year 2 - Continuation \$133,000

JHPIEGO Corporation
 Guatemala Health and Nutrition - Year 3 - Continuation \$175,000

Lourie Center for Children's Social Emotional Wellness
 ECHO for Trauma Informed Preschool Support Program \$75,000

Merck Company Foundation
 Merck Oncology Six-Month Planning Grant \$175,000

N.M. Corrections Department
 N.M. Corrections Department Hepatitis C \$656,112

N.M. Corrections Department
 NMPEP Re-Entry Program \$372,000

N.M. Corrections Department
 Re-Entry ECHO Program: Supporting PEP Graduates As Peer Support Workers \$365,000

N.M. Corrections Department
 Re-Entry ECHO Program: Supporting PEP Graduates As Peer Support Workers - Specific Supplement \$18,000

N.M. Department of Finance & Administration
 Building the Capacity of Legal Aid Providers to Serve Rural New Mexicans Through Project ECHO \$150,000

N.M. Department of Health
 Hepatitis and HIV Clinical Consultant Project \$300,000

N.M. Public Education Department
 ECHO for Community Schools Program 2023 \$40,000

National Center for Chronic Disease Prevention & Health Promotion
 Global Virtual Community of Practice in Public Health Emergency Management Using the Extension for Community Healthcare Outcomes Model \$274,680

Navajo Area Indian Health Service
 Epidemiology ECHO Program for Navajo Area IHS - Continuation \$45,000

Northwest Portland Area Indian Health Board
 Indian Health Service TeleECHO Clinic Support - Year 6 \$152,600

Office of Rural Health Policy
 Expanding Access to Care for Long-Haul COVID Patients in Rural New Mexico - Continuation Year 2 \$475,000

Pfizer, Inc.
 Pfizer & Project ECHO Collaboration: Telementoring, Equity & Advocacy Collaboration for Health Through Antimicrobial Stewardship \$750,000

Schmidt Initiative for Long Covid, LLC
 Provider Education for the Schmidt Initiative for Long COVID \$1,433,661

Stanford University
 Stanford University T1d Support and Technical Assistance - Continuation \$43,000

The Task Force for Global Health
 CDC Global Action in Healthcare Network Antimicrobial Resistance \$11,883

The World Bank
 World Bank Support for Cote D'ivoire MOH \$64,975

UBS Optimus Foundation
 Perinatal Health ECHO Program - UBS \$579,844

University of California, Davis
 ECHO Support for Multinational Health Education Networks in Africa and Southeast Asia - Specific Supplement \$49,473

University of California, Davis
 ECHO Support for Multinational Health Education Networks in Africa and Southeast Asia Y4- Continuation \$44,291

World Health Organization
 ECHO Support for WHO Community of Practice Sessions \$24,948

World Health Organization
 WHO AFRO Session on HIV ARV Toxicity Monitoring \$1,261

World Health Organization
 WHO CNO ECHO Community of Practice - Continuation \$13,143

World Health Organization
 WHO CNO ECHO Community of Practice - Continuation \$23,701

World Health Organization
 WHO CNO ECHO Community of Practice - Specific Supplement \$3,974

World Health Organization
 WHO Hepatitis Webinar Series \$7,575

World Health Organization
 WHO HQ Antimicrobial Resistance Webinar Series - Continuation \$19,940

World Health Organization
 WHO IPC Sessions March - June 2023 \$22,288

World Health Organization
 WHO PHL Webinar Series - Continuation \$16,725

World Health Organization
 WHO PHL Webinar Series - Specific Supplement \$21,763

World Health Organization
 WHO Preparedness and Resilience for Emerging Threats Webinar \$13,884

Emergency Medicine

Danielle Albright
 New Mexico Crime Victim Reparations Commission
 Senate Memorial 50 Extension \$20,000

New Mexico Crime Victims Reparation Commission
 Coordination of Domestic Violence Death Review \$140,000

Justin Baca
 Radiometer Medical ApS
 Radiometer Adult MC Study \$112,391

Laura Banks
 N.M. Department of Health
 DOH Partners in Preparedness Conference 2023 \$131,000

N.M. Department of Homeland Security & Emergency Management
 UNM Hazard Mitigation Plan Update \$66,500

N.M. Transportation Department
 Pedestrian Safety Initiative 22-23 \$300,000

Whitney Barrett
 Department of the Air Force
 Kirtland AFB Medical Direction - Continuation Mod 3 & 4 \$12,500

Darren Braude
 Bernalillo County Fire Department
 EMS Medical Directorship - Continuation \$145,652

City of Albuquerque
 EMS Medical Director - Continuation \$263,480

City of Rio Rancho
 Emergency Medicine Physician-Continuation \$23,731

City of Rio Rancho
 Medical Director Services - Continuation \$84,077

City of Rio Rancho
 Professional Services - Non-Specific Supplement \$5,000

DCI Donor Services
 Medical Director Services \$30,000

Live Nation Worldwide, Inc.
 Paramedics/ EMT \$25,000

Masimo Corporation
 Masimo Oximetry Funding Proposal \$7,500

N.M. Department of Public Safety
 Tactical Emergency Medical Services - Air Medical - Non-Specific Supplement \$59,497

National Park Service
 Canyonlands National Park CANY Refresher Sep 22 \$9,500

Taos County Fire Department
 EMS Medical Director \$36,000

Town of Cochiti Lake
 EMS Medical Director Services - Continuation \$17,000

Town of Red River
 EMS Medical Director Services - Continuation \$12,000

Village of Chama
 EMS Medical Director \$6,000

Village of Cimarron
 Medical Director \$3,600

Village of Magdalena
 Medical Director \$3,600

Village of Questa
 EMS Medical Director \$25,000

Wilderness Medics Inc
 Professional Services (w/BAA) - Continuation \$25,000

Cameron Crandall
 Yale University
 CTN-0099: Emergency Department-Initiated Buprenorphine Validation Network Trial - Continuation \$270,947

Yale University
 CTN-0099: Emergency Department-Initiated Buprenorphine Validation Network Trial - Continuation 2 \$120,656

Yale University
 The National Drug Abuse Clinical Trials Network: New England Consortium Node CTN-0099 (Supplement) - Continuation 2 Part 2 \$201,599

Margaret Greenwood-Ericksen
 Agency for Healthcare Research and Quality
 Mechanisms of Rural Mental Health Disparities K08 Resubmission \$152,480

Andrew Harrell
 National Park Service
 Grand Canyon Medical Direction Services \$37,023

Jon Kenneth Femling
 Inflammatix, Inc.
 Inflammatix, Inc. INF-04 Sepsis Clinical Study Agreement \$111,081

Olive View UCLA Medical Center
 IDnet Synovial Fluid Study - Continuation 2 \$1,600

Olive View UCLA Medical Center
 Project PREVENT II \$79,904

Olive View UCLA Medical Center
Project PREVENT II -
Continuation \$79,904

Olive View UCLA Medical Center
IDnet MPOX Public Health
Monitoring \$44,225

University of California, Los Angeles
EMERGency ID NET Study \$9,393

Steven McLaughlin
Alamo Navajo School Board, Inc.
Medical Director \$22,500

Bosque School
Medical Director Services -
Continuation \$6,492

Bosque School
Medical Director Services -
Continuation \$6,492

Cibola County
Professional Services Agreement -
Continuation \$12,000

Eagle Nest Volunteer Ambulance
Service
Medical Directorship - Emergency
Medicine \$3,600

K&I Field Services
Medical Direction and Care -
Continuation \$12,500

Kindred Hospital (Transitional
Hospital Corp. of New Mexico)
Medical Director Services -
Continuation \$25,000

Presbyterian Medical Services
Medical Director Services -
Continuation \$23,760

Quick Draw
Medical Directorship - Continuation \$880

Sandoval County
Medical Director Services -
Continuation \$150,000

Sandoval County Regional
Emergency Communications
Center
Medical Director Services -
Continuation \$28,368

State of New Mexico
Medical Director, EMTs, Professional
Services - Continuation \$56,133

Trans-Pecos Ultra
Medical Directorship - Continuation \$2,000

Zuni Pueblo
Medical Direction - Continuation \$48,000

John P. Sanchez
Yale University
Developing Evidence to Improve Racial
and Ethnic Diversity in the MD-Scientist
Workforce \$8,145

Kimberly Pruett
N.M. Department of Health
FY23 NM DOH Statewide EMS -
Continuation 7 \$50,000

Diane Rimple
City of Albuquerque
Medical Director Services \$20,000

Amber Rollstin
Specialty Hospital of Albuquerque
Physician Services - Continuation \$50,000

Robert Sapien
Maternal & Child Health Bureau
N.M. EMS for Children \$190,650

Maternal & Child Health Bureau
N.M. EMS for Children Program -
Non-Specific Supplement \$79,781

Northern Navajo Medical Center
Northern Navajo Medical Center Child
Ready Consultation - Continuation \$11,000

Office for the Advancement of
Telehealth
Child Ready Rural Emergency Support of
Trauma - Continuation \$300,000

Philip Seidenberg
TriCore Reference Laboratories
TO# 35_ PAS-19SUST054 Tricore BD
Vacutainer \$94,510

Janet Veesart
National Board of Medical
Examiners
National Board of Medical Examiners OSC
Exam Agreement - Continuation \$75,000

Brandon Warrick
New Mexico Medical Legal Review
Expert Witness- The Forensic Panel -
Non-Specific Supplement \$2,000

Chelsea White
National Park Service
Medical Director El Malpais/El Morro -
Continuation 2 \$4,500

Navajo Nation
Medical Direction for Navajo Nation
2023 \$931,289

Pueblo of Acoma EMS
Medical Direction for the
Pueblo of Acoma Amend 6 \$135,000

Pueblo of Laguna
Laguna Pueblo Medical Direction -
Continuation 6 \$90,000

Ramah Navajo School Board, Inc.,
dba Pine Hill Health Center
Medical Direction for the Ramah Navajo
School Board - Continuation 3 \$169,999

Jenna White
Bernalillo County
Medical Directorship - Non-Specific
Supplement \$14,000

Pueblo of Jemez
FY23 Pueblo of Jemez Medical Direction -
Continuation 4 \$24,000

Santo Domingo Pueblo
Medical Direction for Santo Domingo
Pueblo - Continuation \$19,800

Town of Cochiti Lake
Medical Director Services -
Continuation \$7,000

Village of Cuba
Medical Directorship - Non-Specific
Supplement \$4,100

Family & Community Medicine

Helene B Silverblatt
Bureau of Health Workforce
New Mexico Area Health Education
Centers Point of Service Maintenance and
Enhancement \$432,750

Center for Health Innovation
Contract for Services FY23 - Continuation
\$5,000

Antoinette Benton
Falling Colors Corporation
FY23 Pre-Administration Screening and
Resident Review - Continuation \$194,569

N.M. Department of Health
FY23 Transdisciplinary Evaluation and
Support Clinic W/ BAA -
Continuation \$1,236,782

Valerie Carrejo
The RAND Corporation
Improving Access and Treatment for
Co-Occurring Opioid Use Disorders and
Mental Illness Disorders -
Continuation \$558,948

Arthur Kaufman
City of Albuquerque
Emergency Rental Assistance Program -
Continuation \$406,000

City of Albuquerque
Interagency Intensive Case Management
System to Decrease Substance Abuse in
Albuquerque \$750,000

City of Albuquerque
Med Site Manager Services -
Continuation \$16,375

City of Albuquerque
UNM-OCH Case Navigation at Wellness-2
Hotel - Specific Supplement \$7,000

N.M. Department of Health
New Mexico Immunization Coalition FY23 -
Continuation \$175,658

New Mexico Community Trust
Housing Stability Program \$1,398,162

Office of the Assistant Secretary
for Health & Human Services
Increasing EITC in New Mexico -
Continuation \$450,000

UnitedHealthcare of New Mexico,
Inc.
Social Determinants of Health -
Developing Interventions
Module 4 \$90,000

Sarah Lathrop
N.M. Department of Health
FY23 N.M. Emerging Infections Program -
Am1/Specific Supplement \$40,000

N.M. Department of Health
FY23 N.M. Emerging Infections Program -
Am2/Specific Supplement \$1,012,602

N.M. Department of Health
FY23 N.M. Emerging Infections Program -
Continuation \$861,016

Lawrence Leeman
RTI International
Informing NOWS Research Through
Retrospective Data Collection \$35,060

Melissa Martinez
Mora Valley Community Health
Services, INC
Locum Tenens Services -
Continuation \$25,000

Janet Page-Reeves
National Institute on Minority
Health & Health Disparities
TERTULIAS: Addressing Social Isolation
to Reduce Depression Among Female
Mexican Immigrants -
Continuation \$522,053

National Institute on Minority
Health & Health Disparities
TERTULIAS: Addressing Social Isolation
to Reduce Depression Among Female
Mexican Immigrants -
Continuation Year 5 \$522,053

Tassy Parker
Center for Health Innovation
Climate Change Health Impacts
and Community Action \$24,000

Tassy Parker
University of Colorado Denver
Center for American Indian and Alaska
Native Diabetes Translation Research -
Continuation \$27,450

University of Colorado Health
Sciences Center
Center for American Indian and Alaska
Native Health Disparities - Specific
Supplement \$30,299

University of Colorado Health
Sciences Center
Social Connectedness and Behavioral
Health Risks Among AI/AN Urban
Adults \$94,160

University of Minnesota
AMICA Resubmission \$413,103

Washington State University
Community Organizations for Natives:
COVID-19 Epidemiology, Research,
Testing and Services - Specific
Supplement (2) \$22,875

David Rakel
Bernalillo County
Physician Services - Continuation \$179,448

First Nations Community
Healthsource, Inc.
Physician Services With Obstetrics -
Continuation \$36,000

Felisha Rohan-Minjares
First Choice Community Healthcare
Professional Services -
Continuation \$50,000

Presbyterian Medical Services
Professional Service Agreement -
Continuation \$25,000

Presbyterian Medical Services
Professional Service Agreement -
Continuation \$25,000

Valerie Romero-Leggott
Bureau of Health Workforce
National HCOP Academies -
Continuation \$638,240

Bureau of Health Workforce
New Mexico Workforce Diversity
Center of Excellence \$686,000

Bureau of Health Workforce
New Mexico Workforce Diversity Center of
Excellence - Continuation \$686,000

Pilar Sanjuan
Lovelace Biomedical &
Environmental Research Institute
The ASCEND Study \$121,896

The Task Force for Global Health
MAT-LINK Surveillance Project -
Continuation \$317,000

Chloe Stoffel
Bernalillo County
ADOBE ABC Continuation \$120,000

Falling Colors Corporation
ADOBE HSD Continuation \$525,253

Falling Colors Corporation
ADOBE HSD FY23 \$476,257

Daniel Waldman
Bureau of Health Workforce
Residency Training in Primary Care (PCTE-
RTPC) Program - Continuation \$495,467

Bureau of Health Workforce
Residency Training in Primary Care (PCTE-
RTPC) Program - Continuation \$440,099

Daniel Williams
University of Mississippi Medical
Center
Center for Innovation and Discovery in
Addictions Mississippi Horizons
Project \$60,429

Laura Wylie
Bureau of Health Workforce
Physician Assistant Training in Primary
Care - Continuation FY23 \$299,989

Internal Medicine

Christos Argyropoulos
Alkahest Inc.
Alkahest Consulting Agreement -
Specific Supplement \$20,000

Christos Argyropoulos
Anonymous Non-Profit Foundation
Medical Directorship - Evergreen -
Continuation \$1,249,620

Nour Ass'ad
United Therapeutics Corporation
Phase 3 Study of the Efficacy and Safety
of Inhaled Treprostinil in Subjects With
Idiopathic Pulmonary Fibrosis -
Non-Specific Supplement \$65,394

United Therapeutics Corporation
TETON RIN-PF-302 OLE \$81,389

Sara Assaf
AstraZeneca Pharmaceuticals, LP
OBERON \$78,663

Steven Bradfute
Albert Einstein College of Medicine
Prometheus: A Platform for Rapid
Development of Immunotherapeutics and
Immunoprophylactics Against Emerging
Viral Threats - Continuation \$178,013

Defense Threat Reduction Agency
Long Non-Coding RNAs in Venezuelan
Equine Encephalitis Virus Infection -
Continuation \$624,605

Defense Threat Reduction Agency
Long Non-Coding RNAs in Venezuelan
Equine Encephalitis Virus Infection -
Continuation \$480,741

Defense Threat Reduction Agency
Long Non-Coding RNAs in Venezuelan
Equine Encephalitis Virus Infection -
Year 3 \$104,749

Defense Threat Reduction Agency
Unsupervised and Semi-Supervised ML/AI With Iterative Experimentation for Rapid Identification of Targeted Alphaviral Small Molecules \$150,000

Defense Threat Reduction Agency
Unsupervised and Semi-Supervised ML/AI With Iterative Experimentation for Rapid Identification of Targeted Alphaviral Small Molecules - Y1 Disbursement 2 \$349,524

Los Alamos National Laboratory
Rapid Assessment of Platform Technologies to Expedite Response \$92,116

Los Alamos National Laboratory
Rapid Assessment of Platform Technologies to Expedite Response - Non-Specific Supplement \$134,548

University of California, Irvine
Defining Molecular Mechanisms of Combination Adjuvants: A Systems Immunology Transcriptomics and Imaging Approach - Continuation \$72,076

University of California, Irvine
Defining Molecular Mechanisms of Combination Adjuvants: A Systems Immunology Transcriptomics and Imaging Approach - Y2 \$73,391

Marcos Burgos
N.M. Department of Health
Tuberculosis Medical Care, Consultation and Education Services - FY23 \$273,772

Kelly Chong
Dialysis Clinic, Inc.
Kidney: To Take or Not to Take? - Continuation \$228,763

Jeremy Edwards
National Institutes of Health
Knowledge Management Center for Illuminating the Druggable Genome - Continuation YR6 \$940,050

M. Gabriela Cabanilla
Merck & Company, Inc.
CMV Disease Among Racial and Ethnic Minority Populations \$26,910

Michelle Harkins
Cystic Fibrosis Foundation
Cystic Fibrosis Care Center Program - FY22 \$89,045

Gilead Sciences
GS-5245 in Nonhospitalized Participants With COVID-19 \$66,270

Theresa Heynekamp
Cystic Fibrosis Foundation
Cystic Fibrosis Care Center Program - Continuation \$93,620

Ivy Hurwitz
Office of Naval Research
Evaluation of Essential Oil-Based Larvicides for Mosquito Control in Sub-Saharan Africa \$133,334

Michelle Iandiorio
Health Resources & Services Administration
Ryan White Part C EIS - Continuation \$717,486

HIV-AIDS Bureau
Ryan White HIV/AIDS Program Part D Coordinated HIV Services and Access to Research for Women, Infants, Children, and Youth - Continuation YR10 \$512,417

Julie In
National Institutes of Health
Heavy Metals Exposure Regulates Secretory Lineage in Intestinal Injury \$152,500

Denece Kesler
Bureau of Health Workforce
Preventive Medicine Residency Program \$399,725

Bureau of Health Workforce
Preventive Medicine Residency Program - Non-Specific Supplement \$196,966

Johns Hopkins University
Development of a Medical Screening Program for Former LANL & Sandia Workers - Continuation \$5,000

Office of Rural Health Policy
Radiation Exposure Screening and Education Program - Continuation \$231,132

Christophe Lambert
National Institute of Mental Health
Deriving High-Quality Evidence From National Healthcare Databases to Improve Suicidality Detection and Treatment Outcomes in PTSD \$744,331

National Institutes of Health
Illuminating the Druggable Genome Data Coordinating Center - Engagement Plan With the CFDE Year 3 \$406,238

Lana Melendres-Groves
Acceleron Pharma Inc.
Clinical Trial Phase 3: Protocol A011-13 (HYPERION) \$252,480

Actelion Pharmaceuticals Ltd.
Clinical Trial - Phase 4 - Non-Specific Supplement \$71,934

Aerovate Therapeutics, Inc
IMPAHCT AV101 003 \$230,961

University Of Pennsylvania
Case-Control Study of Methamphetamine in Pulmonary Arterial Hypertension - Continuation \$26,961

Jonathan Owen
UNM Rainforest Innovations
The Magnetic Snare Endovascular Catheter System for Central Venous Stenosis \$25,000

Kimberly Page
Cedars-Sinai Medical Center
Collaborative Care Teams for Hospitalized Patients With Opioid Use Disorders: Translating Evidence Into Practice - FY23 \$220,737

Cedars-Sinai Medical Center
Collaborative Care Teams for Hospitalized Patients With Opioid Use Disorders: Translating Evidence Into Practice - Specific Supplement \$202,547

Loyola University Chicago
Computational Modeling for HCV Vaccine Trial Design and Optimal Vaccine-Based Combination Intervention - Continuation \$53,145

National Institute on Drug Abuse
New Mexico Clinical Trials Node: Clinical Research and Practice to Address Substance Use in Diverse, Rural and Underserved Populations - Y5 \$1,071,836

National Institute on Drug Abuse
New Mexico Clinical Trials Node: Clinical Research and Practice to Address Substance Use in Diverse, Rural and Underserved Populations - Year 4 \$941,000

New York University Grossman School of Medicine
CTN-0100: Optimizing Retention, Duration and Discontinuation Strategies for Opioid Use Disorder Pharmacotherapy - Continuation \$892,395

New York University Grossman School of Medicine
CTN-0100: Optimizing Retention, Duration and Discontinuation Strategies for Opioid Use Disorder Pharmacotherapy - Y22-23 \$923,046

New York University Grossman School of Medicine
CTN-0112 (OPTIMMAL Study) \$89,735

New York University Grossman School of Medicine
CTN-0112 (OPTIMMAL Study) - Continuation \$61,551

The RAND Corporation
Improving Access and Treatment for Co-Occurring Opioid Use Disorders and Mental Illness Disorders - Specific Supplement \$130,034

University of Nevada at Reno
Helping Everyone Recovering From Overdose \$223,971

University of Nevada, Reno
A Multi-Site Mixed Methods Study of Methamphetamine Use in the Mountain West - Continuation \$347,039

Douglas Perkins
Harvard School of Public Health
Fogarty Global Health Training Fellowship Program YR6 \$14,281

John E. Fogarty International Center for Advanced Study in the Health Sciences
Training and Research on Severe Malarial Anemia - Renewal 23 - Continuation \$280,377

National Institute of Allergy & Infectious Diseases
COVID: Temporal Transcriptomics in Hospitalized COVID-19 Patients From Disparately Impacted Ancestral Groups for Therapeutic Discovery - Continuation \$754,597

Christopher Piromalli
Southcentral Foundation
Jumpstarting Culturally Informed Advance Care Planning With AN/AI People in Primary Care \$64,919

David Schade
Case Western Reserve University
EDIC FY2022-2027 \$125,753

Case Western Reserve University
UroEDIC Bladder: Bladder Dysfunction in Type 1 Diabetes - Continuation \$7,685

George Washington University
Continuation of Glycemia Reduction Approaches in Diabetes: a Comparative Effectiveness Study - Continuation \$19,356

George Washington University
DPPOS-4 \$309,986

VisionQuest Biomedical
Thermal Imaging Modality for Detection of Large and Small Fiber Diabetic Peripheral Neuropathy - Continuation \$137,371

Melissa Schiff
N.M. Department of Health
CDC Maternal Mortality Review Committee Grant - FY23 \$18,976

Namita Singh
Novartis Pharmaceuticals Corporation
Clinical Trial Phase 3: LNP023F12301 - Non-Specific Supplement \$31,410

Manoocher Soleimani
Dialysis Clinic, Inc.
Cargo of Exosomes and Microvesicles It Tuberos Sclerosis COMPLEX - Continuation \$344,636

U.S. Department of Veterans Affairs
IPA - Barone - Continuation \$45,417

U.S. Department of Veterans Affairs
IPA - Zahedi - Continuation \$52,762

Veterans Affairs Medical Center
IPA - Brooks - Continuation \$6,792

Akshay Sood
National Institutes of Health
Effectiveness of Innovative Research Mentor Interventions Among Underrepresented Minority Faculty in the Southwest - Continuation \$717,665

Joao Teixeira
bioMerieux, Inc.
VIDAS NEPHROCLEAR CCL4 : B3166 - CTPR01 \$37,518

La Jolla Pharmaceutical Company
Clinical Trial Agreement: A Randomized Controlled Pilot Trial of Angiotensin II Versus Vasopressin as Second-Line Vasopressor in the Treatment of Septic Shock \$42,960

Rediscovery Life Sciences AKI LLC
Clinical Trial Phase 2: RLS003-02-001 - Continuation \$37,684

Jason Timm
Givaudan Flavors Corporation
Givaudan Research Agreement - Y15 \$225,000

Mark Unruh
Honeywell Corporation
Occupational Medical Services - Continuation \$25,000

Lovelace Biomedical & Environmental Research Institute
Occupational Medicine Consulting Services - Continuation \$25,000

QTC Medical Group
Second Medical Opinion Evaluations - Continuation \$25,000

University of North Carolina at Chapel Hill
Comparative Effectiveness of Two Approaches to Symptom Monitoring in Hemodialysis \$10,945

University Of Pennsylvania
Computer Assisted Telephone Interview - Continuation \$62,996

University of Pittsburgh
Technology-Assisted Stepped Collaborative Care Intervention to Improve Patient-Centered Outcomes in Hemodialysis Patients - Continuation \$39,087

University of Washington
Diversifying Enrollment in the HOPE Consortium - Supplement \$70,129

University of Washington
Randomized ESRD Trial COmparing CBT Alone VERsus With Buprenorphine - FY23 \$151,248

Veterans Affairs Office of Research and Development
IPA Jennifer Wilson-inchvets \$80,452

Veterans Health Administration
InchVets - IPA \$72,144

Zenith Administrators
Outpatient Professional Services - Continuation \$25,000

National Institute of Diabetes and Digestive and Kidney Diseases
American Indian Chronic Renal Insufficiency Cohort Study - Continuation \$670,432

Molecular Genetics & Microbiology

Jing Pu
National Institute of General Medical Sciences
Lysosome-Organelle Interaction in Lipid Metabolism \$381,250

Kiran Bhaskar
University of Tennessee
Role of Otulin in Alzheimer's Disease \$205,763

UNM Rainforest Innovations
Virus-Like Particle-Based Vaccines Against Inflammasomes in Various Inflammatory Diseases, Including Alzheimer's Disease \$25,000

Bryce Chackerian
Henry M. Jackson Foundation
Epitope-Based Vaccines for Neisseria Gonorrhoeae - Continuation \$198,403

National Institute of Allergy & Infectious Diseases
Virus-Like Particle-Based Malaria Vaccines Targeting Vulnerable Epitopes in the Circumsporozoite Protein \$637,784

Vojo Deretic
National Institute of Allergy & Infectious Diseases
Autophagy Against Tuberculosis and HIV - Year 10 \$736,954

National Institute of Allergy & Infectious Diseases
Pattern Receptors and Autophagy in Mtb Control in AIDS \$576,063

National Institute of General Medical Sciences
Autophagy, Inflammation and Metabolism in Disease Center - Phase 2 \$2,282,164

Kathryn Frietze

National Institute of Allergy & Infectious Diseases
Defining Chlamydia Trachomatis Adhesion Factor Epitope-Specific Antibody Responses, Functionality, and Roles in Protection Against Urogenital Infection - Non-Specific Supplement \$606

National Institute of Allergy & Infectious Diseases
Defining Chlamydia Trachomatis Adhesion Factor Epitope-Specific Antibody Responses, Functionality, and Roles in Protection Against Urogenital Infection - Year 3 \$32,630

Alison Kell

National Institute of Allergy & Infectious Diseases
Role of Type I IFN Signaling in Seoul Orthohantavirus Pathogenesis \$381,250

National Institute of Allergy & Infectious Diseases
Role of Type I IFN Signaling in Seoul Orthohantavirus Pathogenesis - Year 2 \$381,250

Michael Mandell

National Institute of Allergy & Infectious Diseases
Cellular Responses to Retroviral Capsid Recognition - Year 3 \$414,823

Jing Pu

National Institute of General Medical Sciences
Lysosome-Organelle Interaction in Lipid Metabolism - Year 2 \$381,250

Jaya Rajaiya

National Eye Institute
Novel Mechanisms in Adenoviral Ocular Pathogenesis \$385,046

National Eye Institute
Novel Mechanisms in Adenoviral Ocular Pathogenesis - Year 13 \$316,241

Xuexian Yang

National Heart, Lung, and Blood Institute
The Cytokine Signal Suppressor CIS in Giant Cell Pneumonitis - Year 4 \$378,750

Neurology**Meeta Cardon**

Cure SMA
Multicenter Cure SMA Clinical Data Registry w/BAA \$60,000

Masoom Desai

Marinus Pharmaceuticals, Inc.
1042-SE-3003 - RAISE \$117,125

Marinus Pharmaceuticals, Inc.

Marinus 1042-SE-2002 (RESET Study) \$310,410

Massachusetts General Hospital
Data Generation Projects for the NIH Bridge to Artificial Intelligence Program (OT2) \$197,729

University of Wisconsin-Madison
SAFER-EEG IIS Trial \$44,160

Afshin Divani

National Institute of Neurological Disorders and Stroke
Noninvasive Vagus Nerve Stimulation for Treatment of Brain Injury in Rats \$419,375

Corey Ford

Genentech, Inc.
MN43964 OLERO \$271,941

Novartis Pharmaceuticals Corporation
AGNOS \$569,225

Novartis Pharmaceuticals Corporation
AGNOS - Non-Specific Supplement \$237,835

Tarun Girotra

University of Cincinnati
Comparison of Anti-Coagulation and Anti-Platelet Therapies for Intracranial Vascular Atherostenosis \$93,000

Clotilde Hainline

Genentech, Inc.
GN41851 - FENhance \$2,128,324

Genentech, Inc.
GN41851 - FENhance - Specific Supplement \$32,000

Surojit Paul

National Institute of Neurological Disorders and Stroke
Role of Brain-Specific Tyrosine Phosphatase STEP in Neuroprotection and Death - Continuation \$503,383

Sarah Pirio Richardson

Bukwang Pharmaceutical Co., Ltd.
Shine - BK-JM-201 \$177,576

Emory University
Emory Subaward FY23 \$163,420

Jazz Pharmaceuticals, Inc.
JZP385-202 \$204,146

Ranjana Poddar

National Institute of Neurological Disorders and Stroke
Molecular Basis of Hyperhomocysteinemia-Induced Brain Injury in Ischemic Stroke - Continuation \$577,986

National Institute of Neurological Disorders and Stroke
Molecular Basis of Hyperhomocysteinemia-Induced Brain Injury in Ischemic Stroke - Continuation FY23 \$577,986

Hae Shin

NeuroPace, Inc
NAUTILUS \$267,172

University of California, San Francisco
BVMC3 Project 2 - SWS - Continuation FY23 \$3,790

Michel Torbey

Lovelace Biomedical & Environmental Research Institute
Lovelace Biomedical Research Institute - Continuation FY23 \$18,337

Silver Creek Pharmaceuticals, Inc.
Silver Creek - SCP-CL-0003 - ARPEGGIO \$12,800

University of California, San Francisco
Brain Vascular Malformation Consortium: Predictors of Clinical Course - Continuation \$119,685

University of Cincinnati
RHAPSODY-2 \$140,500

Vanderbilt University Medical Center
C3FIT Stroke \$301,451

Jennifer Vickers

N.M. Department of Health
CMS Outreach Clinics - Neurology - Continuation \$598,185

Neurosciences**Lee Anna Cunningham**

National Institute on Alcohol Abuse & Alcoholism
Network Mechanisms of Impaired Adult Hippocampal Neurogenesis in a Mouse Model of Prenatal Alcohol Exposure - Continuation \$340,875

Jonathan Brigman

National Institute on Alcohol Abuse & Alcoholism
Alcohol Research Training in Neurosciences \$183,242

Samuel McKenzie

National Institute of Mental Health
Investigation Into the Synaptic Origins of Hippocampal Replay - Continuation \$245,904

National Institute of Mental Health
Statistical and Dynamical Models of the Synaptic Contribution to Neural Spiking - Specific Supplement \$181,000

Nikolaos Mellios

National Institute of Mental Health
Unraveling the Biogenesis and Molecular Mechanisms of a Neuronal-Enriched CircRNA Altered in Psychiatric Disease. \$569,195

National Institute on Alcohol Abuse & Alcoholism
Sex-Dependent Effects of Prenatal Alcohol Exposure on Developmental Programming - Continuation \$334,384

Washington University School of Medicine in St. Louis
Multimodal Characterization of the Role of Circular RNAs in Alzheimer's Disease \$287,456

Russell Morton

University of Utah
Spreading Depolarization in the Network Dysfunction Leading to Post-Traumatic Headache \$115,500

Shahani Noor

National Institute on Alcohol Abuse & Alcoholism
Prenatal Alcohol Exposure Generates Vulnerability to the Proinflammatory Effects of Morphine and Adverse Neuroimmune Consequences - Continuation \$379,600

Nora Perrone-Bizzozero

University of South Carolina
Destabilization of Axonal MRNAs by KHSRP Controls Axon Regeneration - Continuation \$29,454

Daniel Savage

National Institute on Alcohol Abuse & Alcoholism
Fetal Ethanol-induced Behavioral Deficits: Mechanisms, Diagnoses and Intervention - Continuation \$1,495,477

Bill Shuttleworth

National Institute of General Medical Sciences
UNM-CBRR - Continuation \$2,203,914

National Institute of General Medical Sciences
UNM-CBRR - Continuation Year 9 \$2,206,648

National Institute of Neurological Disorders and Stroke
Non-Canonical Mechanisms of Excitotoxicity \$39,601

New Mexico State University
New Mexico IDEeA Networks of Biomedical Research Excellence - ADMIN \$162,214

New Mexico State University
New Mexico IDEeA Networks of Biomedical Research Excellence - Bradfute \$37,520

New Mexico State University
NM IDEeA (INBRE) - Mishra Continuation \$151,500

University of Utah
Spreading Depolarization in the Network Dysfunction Leading to Post-Traumatic Headache - Continuation \$115,500

Carlos Valenzuela

National Institute on Alcohol Abuse & Alcoholism
Alcohol and Developing Neuronal Circuits \$521,566

National Institute on Alcohol Abuse & Alcoholism
Alcohol Research Training in Neurosciences - Continuation \$168,213

National Institute on Alcohol Abuse & Alcoholism
Developmental Alcohol Exposure and Cerebro-Cerebellar Circuits \$219,219

Jason Weick

National Institute of Neurological Disorders and Stroke
Molecular Mechanisms of Excitatory Postsynaptic Diversity - Continuation \$340,875

National Institute of Neurological Disorders and Stroke
Molecular Mechanisms of Excitatory Postsynaptic Diversity - Non-Specific Supplement \$37,875

Tou Yia Vue

National Institute of Neurological Disorders and Stroke
Transcriptional Control of OPC Fate Specification and Homing to Gray Matter and White Matter in the CNS - Continuation \$371,611

Obstetrics & Gynecology**Conrad Chao**

N.M. Department of Health
High-Risk Prenatal Care \$82,460

Eve Espey

N.M. Department of Health
Certified Nurse Midwife Contractor Project w/BAA \$107,316

Conrad Chao

N.M. Department of Health
High-Risk Prenatal Care \$329,840

Eve Espey

Albuquerque Area Indian Health Service
OB/GYN IHS Specialty Services - Continuation \$381,309

Anonymous Non-Profit Foundation
Fellowship in Family Planning \$20,384

DOH Prenatal Medical Services
High-Risk Prenatal Care Project \$219,840

First Choice Community Healthcare
Midwifery Services - Continuation \$87,032

N.M. Department of Health
Family Planning and Sexually Transmitted Disease Services Project \$119,419

N.M. Department of Health
High-Risk Prenatal Care Project \$54,960

N.M. Department of Health
Prenatal Medical Services Project \$180,000

New Mexico Perinatal Collaborative
Director of Maternal Health Initiatives FY22 N.M. Perinatal - Continuation \$25,000

New Mexico Sonographics
MFM Services/ Ultrasound Readings \$14,400

Planned Parenthood of the Rocky Mountains
OB/GYN Services & Medical Directorship \$25,000

Lisa Hofer

N.M. Department of Health
Tubal Ligation Sterilization - Non-Specific Supplement \$2,532

Society of Family Planning
#WeCount \$1,000

Peter Jeppson

Women and Infants Hospital of Rhode Island
BEST Trial - PCORI \$219,796

Kate Meriwether

RTI International
PFDN Capitation \$3,497

Society of Gynecologic Surgeons
SGS/CoRPS PoRS - Non-Specific Supplement \$1,396

Aleda Noelle Borders

Health Care Service Corporation
Centering Healthcare Institute \$38,674

Amber Truehart

Anonymous Non-Profit Foundation
RAD - Surge Location Funds \$74,050

Office of the Medical Investigator

Lauren Decker
U.S. Department of Justice
Expert Witness, USA v. Stetson Shane Bames, et al. \$11,282

Lauren Dvorscak
N.M. Public Safety Department
2020 Coronavirus Emergency Supplement Funding Phase #3 \$154,175

N.M. Public Safety Department
2020 Coronavirus Emergency Supplemental Funding Grant \$284,520

Heather Edgar
U.S. Department of Justice
Expert Witness - H. Edgar; U.S. v. Jorge Domingues, et al., \$9,219

Daniel Gallego Umana
New York University Grossman School of Medicine
The SARS-CoV-2 Autopsy Cohort Post Acute Sequelae of COVID Study - Phase 2 - Continuation \$525,056

U.S. Department of Justice
Expert Witness; U.S. v. Alexis Lovato, et al. \$12,919

Heather Jarrell
Bureau of Indian Affairs
BIA Autopsy Services - Continuation \$31,650

Eastern New Mexico Medical Center
Eastern New Mexico Medical Center - Autopsy Services \$25,000

Lovelace Health System
Autopsy Services FY23 - Continuation \$25,000

Lovelace Health System
Lovelace Heath System: Autopsy Services FY23 - Continuation \$25,000

Memorial Medical Center
Autopsy Services - Memorial Medical Center - Continuation \$5,000

N.M. Department of Health
Workforce Development Staffing Project - Continuation \$366,146

N.M. Public Safety Department
2021 Paul Coverdell Forensic Science Improvement Award \$62,363

N.M. Public Safety Department
2022 Paul Coverdell Forensic Science Improvement \$61,731

Navajo Nation
Navajo Nation - Autopsy Services \$137,871

Navajo Nation
Navajo Nation - Autopsy Services \$125,000



New Mexico Crime Victims Reparation Commission
Victims of Crime Act Victim Assistance FY2023 \$99,441

U.S. Department of Veterans Affairs
VA Autopsy Services May 6, 2023, to May 5, 2024 \$39,959

Clarissa Krinsky
U.S. Department of Justice
Expert Witness - DOJ; U.S. v. Edgar Efran R-g, et al., (Juv) \$31,086

Sarah Lathrop
N.M. Department of Health
Increase Timeliness of Fatal Opioid Overdose Processing & Provide Toxicology Testing Services Project \$679,493

U.S. Consumer Product Safety Commission
MECAP Reports - Continuation \$945

Ian Paul
U.S. Attorney's Office
Expert Witness - DOJ; U.S. v. Alexis Lovato, et al. \$7,674

Lori Proe
National Center for Chronic Disease Prevention & Health Promotion
OMI UNM SUID SDY Application - Continuation \$60,505

U.S. Department of Justice
Expert Witness - DOJ; U.S. v. Jorge Domingues, et al. \$13,794

U.S. Department of Justice
Expert Witness- L. Proe/ E. Helmrich - DOJ; U.S. v. Isaiah Bob \$17,599

Ophthalmology & Visual Sciences

James Chodosh
National Eye Institute
Immunopathogenesis of Adenovirus Keratitis \$187,180

National Eye Institute
Immunopathogenesis of Adenovirus Keratitis - Continuation \$318,602

University of California, San Francisco
SCORPIO \$10,097

Arup Das
National Eye Institute
Novel Biomarkers & Genetics of Diabetic Retinopathy - NC Continuation \$467,370

New Mexico Commission for the Blind
Emergency Eye Care Program Continuation - Continuation \$140,000

New Mexico Commission for the Blind
Emergency Eye Care Program Continuation - Continuation \$150,000

Veterans Health Administration
IPA With VA: Finny Monickaraj Swamidoss \$200,318

Alexander Davis
Southwest Eyecare Specialists, PC
Clinical Services - Continuation \$26,875

Southwest Eyecare Specialists, PC
Clinical Services - Continuation \$26,875

Dusanka Deretic
National Eye Institute
Rhodopsin Trafficking & Photoreceptor Membrane Renewal - Continuation \$378,750

Orthopaedics & Rehabilitation

Deana Mercer
Axogen Corporation
RANGER Study \$133,184

Dustin Richter
Arthrex, Inc.
Arthrex Sports Med Fellowship \$20,000

Arthroscopy Association of North America
AANA Orthopaedics & Rehabilitation Arthroscopy/Sports Medicine Fellowship 24 \$4,530

Lipogems Spo, LLC
Lipogems FDA Trial \$120,313

Robert Schenck
University of Pittsburgh
STaR - Quarterly Redcap Report - Amendment 15 \$2,356

University of Pittsburgh
STaR - Specific Supplement Quarterly Redcap Report \$1,114

University of Pittsburgh
Surgical Timing and Rehabilitation for Multiple Ligament Knee Injuries: A Multicenter Integrated Clinical Trial - Continuation \$2,462

University of Pittsburgh
Surgical Timing and Rehabilitation for Multiple Ligament Knee Injuries: Multicenter Integrated Clinical Trial - Specific Supplement \$1,000

University of Pittsburgh
Surgical Timing and Rehabilitation for Multiple Ligament Knee Injuries: A Multicenter Integrated Clinical Trial - Specific Supplement \$1,038

Selina Silva
Ann & Robert H. Lurie Children's Hospital of Chicago
Infrastructure for Musculoskeletal Pediatric Acute Care CT - Continuation \$4,032

Ann & Robert H. Lurie Children's Hospital of Chicago
Infrastructure for Musculoskeletal Pediatric Acute Care CT - Non-Specific Supplement \$1,700

Pathology

Tione Buranda
Tulane University
Investigating the Role and Therapeutic Potential of the Alpha5beta1 Integrin in Risk Factors for COVID-19-Associated Cognitive Impairment \$686,901

Jennifer Gillette
National Heart, Lung, and Blood Institute
Functional Role of Tetraspanin CD82 in Hematopoietic Stem Cell Interactions - Continuation \$376,845

Nancy Joste
Southwest Gastroenterology Associates, P.C
Medical Director & Physician Services - Continuation \$25,000

TriCore Reference Laboratories
Medical Director Services - Continuation \$1,302,753

TriCore Reference Laboratories
Medical Director/Scientific Director Services - Continuation \$363,499

Diane Lidke
National Institute of General Medical Sciences
Imaging the Early Events in Membrane Receptor Signaling - Continuation \$420,193

Yale University
Understanding How Receptor Tyrosine Kinase Activation Dynamics Specify Proliferative Cellular Responses - Continuation \$195,293

Dennis McCance
University of Virginia
Biospecimen Procurement and Tissue Microarray Manufacture for the CHTN - Non-Specific Supplement \$24,869

Aysha Mubeen
TriCore Reference Laboratories
TO# 42 Ventana ILR 25% & 50% MET Studies \$20,020

Kurt Nolte
Astho
Project ECHO Pilot- Drug Overdose Training for Medical Examiners and Coroners \$3,750

Samuel Reynolds
TriCore Reference Laboratories
TO# 34 PathAI FRM 187 Novo Primary Study \$45,000

TriCore Reference Laboratories
TO# 41 Ventana ILR 25% & 50% MET Studies \$20,020

Larry Sklar
Boston Children's Hospital
Compounds That Block a Novel Candida Albicans Target - Continuation \$31,194

University of Miami
Illuminating the Druggable Genome Resource Dissemination and Outreach Center - Continuation \$255,000

University of Miami
Illuminating the Druggable Genome Resource Dissemination and Outreach Center - Continuation \$255,000

Mohammad Vasef
TriCore Reference Laboratories
TO# 36 Ventana KLEAR Study Phase 2 \$16,800

Angela Wandinger-Ness
Burroughs Wellcome Fund
Burroughs Wellcome Fund \$7,000

National Institute of General Medical Sciences
Academic Science Education and Research Training - Continuation \$1,060,087

Pediatrics

Shirley Abraham
American Thrombosis and Hemostasis Network
American Thrombosis and Hemostasis Network Round 14 - Continuation \$10,000

Oregon Health & Science University
ATHN-CDC- Public Health Surveillance for the Prevention of Complications of Bleeding Disorders - Continuation \$30,000

Oregon Health & Science University
Regional Hemophilia Network - Mountain States \$45,000

Oregon Health & Science University
Regional Hemophilia Network - Mountain States - Continuation \$245,976

Oregon Health & Science University
Regional Hemophilia Network - Mountain States - Continuation \$50,000

Sophie Bertrand
N.M. Early Childhood Education & Care Department
NM ECECD Home Visiting Training \$1,169,129

Suzanne Burns
University of Wisconsin
Home Evaluation App for Community Independence: HESTIA-NextGen - Continuation \$54,946

Anthony Cahill
American Association on Health & Disability
Project Accessibility USA: Health Promotion for Women With Disabilities - Non-Specific Supplement \$5,000



Glenda Canaca
N.M. Human Services Department
Social Marketing ESPH -
Continuation \$615,863

Loretta Cordova De Ortega
Family Connects New Mexico
Project
FY23 Services: Provide FCNM Services to
Qualified Patients \$17,664

N.M. Department of Health
CMS Outreach \$1,520,466

Presbyterian Healthcare Services
Pediatric Interventional Cardiology
Medical Director \$25,000

Presbyterian Healthcare Services
Pediatric Nephrology Medical Director
Services - Continuation \$3,952

Presbyterian Healthcare Services
Pediatric Nephrology Services -
Continuation \$25,000

Presbyterian Healthcare Services
Pediatric Nephrology Services -
Continuation \$25,000

Theresa Cruz
Falling Colors Corporation
DV Resource Access \$150,000

N.M. Children, Youth & Families
Department
Safe Sleep Focus Groups \$135,500

N.M. Human Services Department
SNAP-ED Evaluation -
Continuation \$281,297

New Mexico Coalition of Sexual
Assault Programs, Inc.
SVP Needs Assessment \$100,000

Presbyterian Healthcare Services
COVID-19 REACH, 22-23 \$30,000

Presbyterian Healthcare Services
REACH Evaluation 2022-23 \$72,000

Sally Davis
Centers for Disease Control and
Prevention
HPHP PRC Core - Year 4
Continuation \$338,808

Centers for Disease Control and
Prevention
HPHP PRC Research - Year 4
Continuation \$411,192

Centers for Disease Control and
Prevention
PRC CORE -
Continuation Yr 5 of 5 \$322,524

Centers for Disease Control and
Prevention
PRC RESEARCH HPHP -
Continuation Year 5 of 5 \$427,476

N.M. Department of Health
Implementing Evidence-Based
Recommendations in Community Projects,
22 - 23 \$43,350

Walter Dehority
PPD Investigator Services
Moderna Pediatric COVID Vaccine Trial -
Specific Supplement \$917,732

Darrell Dinwiddie
Sandia National Laboratories
COVID-19 Multiplexed Virus Detection
Via Metal-Organic Framework-Based
Biosensors - Continuation \$98,800

Timothy Dionne
Bureau of Health Professions
HRSA Scholarship for Disadvantaged
Students - Continuation \$650,000

Kevin Estes
Office of Planning, Research &
Evaluation
Expanding Child Care Subsidies New
Mexico \$99,826

Janell Fuller
Eunice Kennedy Shriver National
Institute of Child Health and
Human Development
Cooperative Multicenter Neonatal
Research Network \$335,500

RTI International
NIH/NICHD Neonatal Capitation
(NRN) \$335,500

Rebecca Girardet
New Mexico Crime Victim
Reparations Commission
VOCA FY23 \$54,524

New Mexico Crime Victims
Reparation Commission
CVRC SAS State Grant-FY23 \$462,600

New Mexico Crime Victims
Reparation Commission
CVRC SAS State Grant-FY24 \$462,600

New Mexico Crime Victims
Reparation Commission
Para Los Niños New Therapy, Outreach,
and Education Initiatives \$71,200

Mark Hardison
American Occupational Therapy
Foundation
Feasibility of the ROADE Program \$49,999

Sandra Heimerl
Association of University Centers
on Disability
Act Early Ambassador \$6,000

Maternal & Child Health Bureau
N.M. LEND Program -
Continuation \$645,000

Maternal & Child Health Bureau
NM LEND Program -
Continuation \$642,583

N.M. Developmental Disabilities
Planning Council
New Mexico LEND Legislative
Advocacy Workshop \$2,500

Julia Hess
United Voices for Newcomer Rights
REFRAME \$152,764

Mary Hill
New Mexico State University
N.M. Agrability - Assistive Technology
Program for Farmers With
Disabilities \$37,623

Priscilla Juarez
County of Bernalillo
Professional Service Agreement -
Continuation \$1,200,000

Rebecca Kilburn
Albuquerque Public Schools
APS 1807 - Youth Risk Behavior Survey
and School Health Profiles Surveys,
22 - 23 \$117,971

Bureau of Health Resources
Development
Home Visiting: a Study of Optimal Live
and Virtual Efforts \$473,000

Falling Colors Corporation
OSAH Youth Risk and Resiliency Survey
2023 \$30,000

N.M. Department of Health
Youth Risk and Resiliency Survey,
22 - 23 \$229,757

N.M. Public Education Department
PED Evaluation \$36,500

RAND Corporation
Taking Violence Prevention to
Scale - Continuation \$233,936

W.K. Kellogg Foundation
Informing Decision Making on
SBHCs in NM \$50,000

Hellen Ko
Institute for Advanced Clinical
Trials for Children
Educational Grant \$2,000

Alberta Kong
Aleut-Odle Training and
Development
Providing Medical Services at
ABQ Job Corps \$99,755

Brindle Foundation
Optimizing Care for Neonatal Opioid
Withdrawal Syndrome in Rural
New Mexico \$25,000

N.M. Department of Health
Long-Acting Reversible Contraception
Training Project \$250,000

N.M. Department of Health
Long-Acting Reversible Contraception
Training Project - Continuation \$750,000

Robert T. Keeler Foundation
Supporting Community Providers in Their
Approach to Care for Neonates \$40,000

Jean Lowe
University of Cincinnati
Medication Treatment for Opioid
Use Disorder in Expectant Mothers -
Continuation \$16,801

Peggy MacLean
Amistad Family Services
Amistad FAN Training \$12,900

N.M. Early Childhood Education &
Care Department
FAN Training \$142,636

N.M. Early Childhood Education &
Care Department
HATCH (Level 2 NICU) \$772,033

Michael Marble
N.M. Department of Health
CMS Newborn Screening \$349,416

Jessie Maxwell
National Institute on Alcohol Abuse
& Alcoholism
Consequences of Combined Prenatal
Alcohol Exposure and Acute Placental
Ischemia \$192,739

Jodi Mayfield
Association of Pediatric Program
Directors
Prevalence of Imposter Phenomenon
in Pediatric Residents and Faculty and
Effectiveness of Coping Methods \$2,000

Marcia Moriarta
Administration for Community
Living
University Center for Excellence in
Developmental Disabilities \$577,735

Administration for Community
Living
University Center for Excellence in
Developmental Disabilities -
Continuation \$606,330

Falling Colors Corporation
Infant Mental Health CPP \$16,000

Falling Colors Corporation
Infant Mental Health Training and
Consultation \$20,700

N.M. Department of Health
CMS Medical Home Portal
Project \$150,000

N.M. Department of Health
DDSD Community Inclusion
(Formerly Informed Choice) \$100,000

N.M. Department of Health
DOH Autism Programs -
Specific Supplement \$59,000

N.M. Department of Health
Medically Fragile Waiver \$2,284,376

N.M. Department of Health
MFP Contract \$106,000

N.M. Department of Health
N.M. Access to Behavioral Health for
Children - Specific Supplement \$234,318

N.M. Department of Health
New Mexico SAFE Program \$105,000

N.M. Early Childhood Education &
Care Department
Early Childhood Network \$492,000

N.M. Early Childhood Education &
Care Department
Early Childhood Network -
Specific Supplement \$105,500

N.M. Early Childhood Education &
Care Department
FIT FOCUS \$19,230

N.M. Early Childhood Education &
Care Department
Nurse-Family Partnership \$886,036

N.M. Early Childhood Education &
Care Department
Parents As Teachers \$1,019,999

Martha Muller
Cystic Fibrosis Foundation
Cystic Fibrosis Center of New Mexico -
CF Registry \$85,495

Cystic Fibrosis Foundation
LEAPP CF Fellowship \$64,745

Cystic Fibrosis Foundation
Pharmacy Services \$50,710

Dawn Novak
N.M. Early Childhood Education &
Care Department
Developmental Care Continuity Program -
Continuation \$96,000

N.M. Early Childhood Education &
Care Department
Developmental Care Continuity Program -
Continuation \$50,007

N.M. Early Childhood Education &
Care Department
Developmental Care Continuity Program -
Continuation - Non-Specific
Supplement \$442,200

Patricia Osbourn
A Child's Garden Preschool
A Child's Garden Preschool
Consultations \$3,135

A Child's Garden Preschool
A Child's Garden Preschool
Consultations \$3,591

Acoma Pueblo
Haaku Acoma Consultations \$701

Albuquerque Public Schools
APS Scope for Student (PB) \$3,080

Albuquerque Public Schools
Scope for Student - APS \$3,300

Aztec Municipal School District
Aztec Consultations \$9,405

Belen Consolidated Schools
Belen Consultations \$2,935

Bloomfield Public Schools
Bloomfield Consultations \$6,985

Bureau of Indian Education
Havasupai Elementary
Consultation \$169,660

Central Consolidated School
District
Central Consolidated
Consultations \$23,746

Cimarron Municipal Schools
Eagle Nest Consultations \$11,381

Des Moines Municipal Schools
Des Moines Consultations \$6,071

Falling Colors Corporation
Peer Support and Referrals \$100,000

Gadsden Independent School
District
Gadsden Consultations \$5,489

Laguna Department of Education
Laguna Pueblo Consultations \$8,525

Moriarty-Edgewood School District
Moriarty-Edgewood Consultations
FY23 \$11,578

N.M. Developmental Disabilities
Planning Council
DDC Health Access \$10,000

N.M. Developmental Disabilities
Planning Council
DDC Information Network \$160,000

N.M. Developmental Disabilities
Planning Council
DDC Partners in Policymaking \$52,000

N.M. Public Education Department
PED Contract SET & DB \$466,310

New Mexico Division of Vocational
Rehabilitation
DVR STW - Pre-ETS -
Continuation \$489,608

New Mexico Division of Vocational
Rehabilitation
DVR STW - Pre-ETS -
Continuation \$494,150



National Institutes of Health
Electroconvulsive Therapy Amplitude Titration for Improved Clinical Outcomes - Non-Specific Supplement \$68,766

Deborah Altschul
 Falling Colors Corporation
FEMA Crisis Counseling Program - Regular Services Program Wildfire Crisis Response - Continuation \$94,898

Falling Colors Corporation
FEMA Crisis Counseling-Immediate Services Program Wildfire Crisis Response \$39,987

New Mexico Behavioral Health Collaborative
COVID-19 Emergency Response Extension - FY23 \$70,000

New Mexico Behavioral Health Collaborative
COVID-19 Emergency Response Extension - FY23 - Specific Supplement \$145,250

San Felipe Pueblo
San Felipe Integrated Care And Resources Enhancement \$400,000

San Felipe Pueblo
San Felipe Native Advancing Wellness and Resiliency in Education II \$1,250,000

David Arciniegas
 Colorado State University
New Approach to Studying White Matter Aging - Continuation Year 2 \$1,773

Lovelace Biomedical & Environmental Research Institute
A Longitudinal Study of Traumatic Brain Injury in a High-Risk Population \$31,657

University of Colorado
University of Colorado MIBH Consulting for Research - Arciniegas - Continuation YR3 \$133,900

Caroline Bonham
 Albuquerque Area Indian Health Service
IHS-AAO Substance Abuse & Mental Health Clinical & Community Education, Training & Outreach Services - 2022 Continuation \$99,000

Albuquerque Area Indian Health Service
IHS-AAO Substance Abuse & Mental Health Clinical & Community Education, Training & Outreach Services - Mod 3 \$99,000

Falling Colors Corporation
CMS Mobile Crisis Response Planning - Continuation \$32,500

Falling Colors Corporation
Competency to Stand Trial Evaluations \$125,000

Indian Health Service
IHS Tele-Behavioral Health, Training & Consultation - Non-Specific Supplement \$200,000

Indian Health Service
IHS Tele-Behavioral Health, Training & Consultation - Option Year 4 \$500,000

Indian Health Service
Tele-Behavioral Health, Training & Consultation - Mod-16 Non-specific Supplement \$150,000

Indian Health Service
Tele-Behavioral Health, Training & Consultation - Non-Specific Supplement \$150,000

N.M. Human Services Department
HSD Behavioral Health Consultant, N.M. Consortium for Behavioral Health, Training and Research Development Support, Early Assessment and Resource Linkage for Youth Clinic, Honoring Native Life Medicaid - Continuation \$3,296,196

N.M. Human Services Department
HSD Behavioral Health Consultant, N.M. Consortium for Behavioral Health, Training and Research Development Support, Early Assessment and Resource Linkage for Youth Clinic, Honoring Native Life Medicaid A2 W-SMI-SED & SUD \$434,877

N.M. Indian Affairs Department
IAD FY23 Community Training \$39,250

Juan Bustillo
 Intra-Cellular Therapies, Inc
 LUMAFEP \$421,617

Jose Canaca
 New Mexico Behavioral Health Collaborative
BHSD Rural Public Psychiatry - FY23 & FY24 \$450,000

Jennifer Crawford
 Center for Substance Abuse Treatment
New Mexico FOCUS Medication-Assisted Treatment - Prescription Drug and Opioid Addiction Expansion - Continuation \$525,000



Center for Substance Abuse Treatment
New Mexico FOCUS Medication-Assisted Treatment - Prescription Drug and Opioid Addiction Expansion - Continuation \$525,000

Annette Crisanti
 Albuquerque Police Department
CIT-ECHO Coordination - Continuation \$99,999

Center for Substance Abuse Treatment
Peer Support Model to Address Substance Use Disorders Treatment Engagement in Rural Communities \$1,500,000

Falling Colors Corporation
Opening Doors through Services and Supports for Homeless Individuals with Serious Mental Illness or Co-Occurring Disorder - FY23 Supplement \$23,999

Rebecca Ezechukwu
 Center for Substance Abuse Treatment
 ACTION-III \$400,000

Brian Isakson
 N.M. Children, Youth & Families Department
Healthy Transitions Expansion Program - Amendment 3 \$218,000

N.M. Children, Youth & Families Department
SOC III - System of Care Expansion and Sustainability - FFY22 Jul- Sep Supplement \$169,510

N.M. Children, Youth & Families Department
Systems of Care Grant III - Return on Investment Amendment \$68,000

Tyler Kincaid
 N.M. Children, Youth & Families Department
Multi-Systemic Therapy Data Reporting Initiative - FY23 \$31,400

David Lardier
 Montclair State University
Paterson, N.J./ Montclair State University Strategic Prevention Framework - Partnerships for Success Initiative - Continuation \$21,000

Montclair State University
The Paterson Coalition Against Substance Abuse - FFY23 \$10,000

Montclair State University
The Paterson, N.J./ Montclair State University Substance Misuse, HIV and Viral Hepatitis Prevention Navigator Initiative for Racial/Ethnic Minorities Ages 13-24 - Year 2 \$25,000

Rodney McNease
 UNM Hospital
Psychiatric Services - UNMH/CABQ ACT Program MOU \$128,630

Christopher Morris
 Falling Colors Corporation
Systems of Care III - CYFD - UNMMG - Continuation \$542,000

My Nim
 Falling Colors Corporation
Bridges to Wellness / Promoting Integration of Physical and Behavioral Healthcare (B2W / PIPBHC) - Final 3 Mos \$46,055

New Mexico Behavioral Health Collaborative
Resiliency in Communities After Stress and Trauma \$225,000

Jennifer Perillo
 New Mexico Behavioral Health Collaborative
Comprehensive Opioid, Stimulants, Substance Abuse Site-Based Program / Law Enforcement Assisted Diversion (COSSAP/LEAD) - FY23 \$111,000

Davin Quinn
 New Jersey Institute of Technology
 IRAPID \$320,991

The Mind Research Network
 MC-TBI \$44,338

Julie Salvador
 Falling Colors Corporation
NM State Opioid Response 2020: Jul - Sep SFY23 \$298,930

Falling Colors Corporation
State Opioid Response 3 - Amendment 1 Supplement \$50,672

Falling Colors Corporation
State Opioid Response III \$974,456

Mauricio Tohen
 Hidalgo Medical Services
 Psychiatric Services \$25,000

New Mexico VA Health Care System
 Psychological Evaluations \$25,000

Ann Waldorf
 State of New Mexico
Community Reinforcement and Family Training \$60,000

Substance Abuse and Mental Health Services Administration
UNM-PCSS NP & Expansion - Continuation \$150,000

Region IX Education Cooperative
Region IX Education Cooperative \$162,580

Rio Rancho Public Schools
Rio Rancho Consultations \$108,075

U.S. Department of Education
Project for N.M. Children Who Are Deaf-Blind - Continuation \$107,912

Mary Ramos
 Falling Colors Corporation
School Nursing Academic Partnership \$387,500

Falling Colors Corporation
School-Community Integration for Youth Mental Health \$645,780

Pacific Institute for Research & Evaluation
Enhancing Structural Competency in SBHC to Address LGBTQ Adolescent \$77,510

Anjali Subbaswamy
 University Of Pennsylvania
 PROSpect Study \$17,500

Jessica Valdez
 Children's Oncology Group
Project Everychild (APEC14B1) \$30,000

Children's Oncology Group
St. Baldrick's Foundation- COG Research Protocols \$5,000

Public Health Institute
 ACNS1831 \$3,750

Public Health Institute
ANBL1531: A Phase 3 Study of 131I-metaiodobenzylguanidine or ALK Inhibitor Therapy in Children With Newly Diagnosed High-Risk NBL \$89,960

Public Health Institute
Children's Oncology Group/Public Health Institute Work Order - AR62272 \$3,750

St. Baldrick's Foundation
Improving Access to Clinical Research Trials FY23 \$50,000

Monique Vallabhan
 Brindle Foundation
Advancing Hepatitis C Detection and Treatment in Sandoval County Children \$29,000

Jennifer Vickers
 N.M. Department of Health
Continuum of Care Main \$920,115

N.M. Department of Health
 CORE \$1,834,100

N.M. Department of Health
Mortality Review \$168,832

Craig Wong
 Nationwide Children's Hospital
CureGN II - Continuation \$15,500

The Children's Mercy Hospital
CKiD IV - Continuation \$16,911

The Children's Mercy Hospital
 CKiD REACH \$600

The Children's Mercy Hospital
Genomic Research Results Disclosure Study - Continuation \$13,266

Elizabeth Yakes Jimenez
 Academy of Nutrition and Dietetics
Director of Nutrition Research Network - Continuation \$45,618

N.M. Public Education Department
Improving Health and Academic Success Grant \$16,000

W.K. Kellogg Foundation
Development of Standardized Health Equity and QI Curriculum \$175,000

Nan Zeng
 Colorado State University
Obesity Prevention Targets for Down Syndrome \$26,823

N.M. Human Services Department
 CHILE Plus - Continuation \$419,980

Psychiatry & Behavioral Sciences

Christopher Abbott
 Georgia State University
Data-Driven Approaches to Identify Biomarkers From Multimodal Imaging Big Data - Continuation Year 4 \$23,916

National Institute of Mental Health
Deciphering Mechanisms of ECT Outcomes and Adverse Effects \$536,848

National Institute of Mental Health
Deciphering Mechanisms of ECT Outcomes and Adverse Effects - Continuation \$509,998

National Institute of Mental Health
Electroconvulsive Therapy Amplitude Titration for Improved Clinical Outcomes - Continuation \$738,068



Daniel Williams
Falling Colors Corporation
Assertive Community Treatment -
FY23 \$136,739

Radiology

Jacqueline Castro
Assured Imaging Women's
Wellness
Qualified Medical Physicians
Services \$25,000

Duke City Urgent Care, LLC
Qualified Medical Physicians
Services \$25,000

The Foot and Ankle Clinic of
Albuquerque, P.C.
Qualified Medical Physicians
Services \$25,000

Gary Mlady
Central New Mexico Community
College Radiologic Technology
Program
Qualified Medical Physicians
Services \$25,000

City of Albuquerque
Qualified Medical Physicians
Services \$25,000

Duke City Urgent Care, LLC
Qualified Medical Physicians Services -
Continuation \$25,000

Espanola Valley Humane Society
Qualified Medical Physicians
Services \$25,000

Excellent Dental, P.A.
Qualified Medical Physicians
Services \$25,000

Four Corners ASC
Qualified Medical Physicians
Services - Continuation \$25,000

Indian Health Service
Albuquerque Indian Health
Service - Continuation \$7,000

John F. Crisler, DDS, PA
Medical Physicist Services -
Continuation \$25,000

Lovelace Health System
Qualified Medical Physicians
Services \$25,000

N.M. Department of Health
BCC Early Detection Program
FY23 \$126,941

N.M. Department of Health
DOH Breast & Cervical Cancer Early
Detection Program Project \$84,400

N.M. Department of Health
FY23 Services: Breast and Cervical Cancer
Early Detection Program \$126,941

Santo Domingo Health Center
Physicist Services - Continuation \$25,000

U.S. Attorney's Office
Expert Witness \$21,118

Surgery

Ross Clark
Exhalix, LLC
Repair by Local Infusion of Sulfides for
Ischemic Surgical Wounds \$99,965

John Marek
Presbyterian Medical Services
On-Call Surgical Services \$25,000

Specialty Hospital of Albuquerque
Physician Services - Continuation \$25,000

Richard Miskimins
Kerecis
Kerecis Educational Grant \$5,000

KLS Martin LP
UNM ASSET Course Educational
Grant \$5,000

Ryan Orosco
Alume Biosciences, Inc.
Clinical Trial - Alume Biosciences Phase 3
ALM-488 Head and Neck \$223,065

Anil Shetty
N.M. Department of Health
DOH-CMS Cleft Lip Palate &
Craniofacial Project \$8,400

UNM HOSPITAL

Rodney McNease
Bernalillo County
Medical Directorship and Case
Management Services \$750,000

City of Albuquerque
Domestic Violence Trauma Services for
Children and Families -
Continuation \$232,000

City of Albuquerque
Early Intervention for Children
Services - Continuation \$236,340

City of Albuquerque
Intensive Case Management
Services \$615,000

City of Albuquerque
Primary Care Services - YCHC \$161,970

County of Bernalillo
Behavioral Health Services -
Continuation \$2,000,000

Robert Perry
N.M. Department of Health
Medical Reserve Corps Bus
Transport \$65,400

N.M. Department of Health
Medical Reserve Corps Bus
Transport \$23,760

Lisa Quinones
City of Albuquerque
Domestic Violence Trauma Services for
Children and Families \$232,000

City of Albuquerque
Early Intervention for Children Services -
Continuation \$236,340

City of Albuquerque
UNMH-YCHC - Continuation \$161,970

A. Robb McLean
Anticoagulation Forum, Inc.
TRAIN Grant Award \$120,000

N.M. Department of Health
DOH BCC Early Detection Program,
Screening Services Case Manager \$85,000

**UNM MEDICAL GROUP,
INC.**

Elizabeth Kocher
First Choice Community Healthcare
Locum Tenens Physician Services \$25,000

Holy Cross of Taos
Locum Tenens Physician Services \$25,000

Laguna Healthcare Corporation
Locum Tenens Services \$25,000

A. Robb McLean
Laguna Healthcare Corporation
Locum Tenens Services \$25,000

Mora Valley Community Health
Services, Inc.
Locum Tenens Physician Services \$25,000

Presbyterian Medical Services
Locum Tenens Services - Continuation
\$25,000

Rio Grande, Inc.
Integrative & Alternative Medicine CAM
Services \$25,000



At The University of New Mexico, research is the heartbeat of progress, driving innovation, transforming education and shaping the future.

Your philanthropic spirit can spark groundbreaking research addressing societal challenges, from improving health care access to reducing health disparities and advancing knowledge for New Mexico and beyond.

Private gifts allow us to explore early-stage ideas that might not qualify for traditional funding sources. This work, made possible by your support, lays the foundation for discoveries that change lives. It can turn a dormant idea into a game-changing innovation.

Join UNM and the UNM Foundation, and become part of a team that propels progress, fosters talent and uplifts New Mexico.

Visit us at www.unmfund.org



OFFICE OF RESEARCH
1 University of New Mexico
MSC08-4560, Fitz Hall B-61
Albuquerque, NM 87131-0001

RESEARCH ANNUAL REPORT 2023

DISCOVERY



**TURNING RESEARCH
INTO CURES**