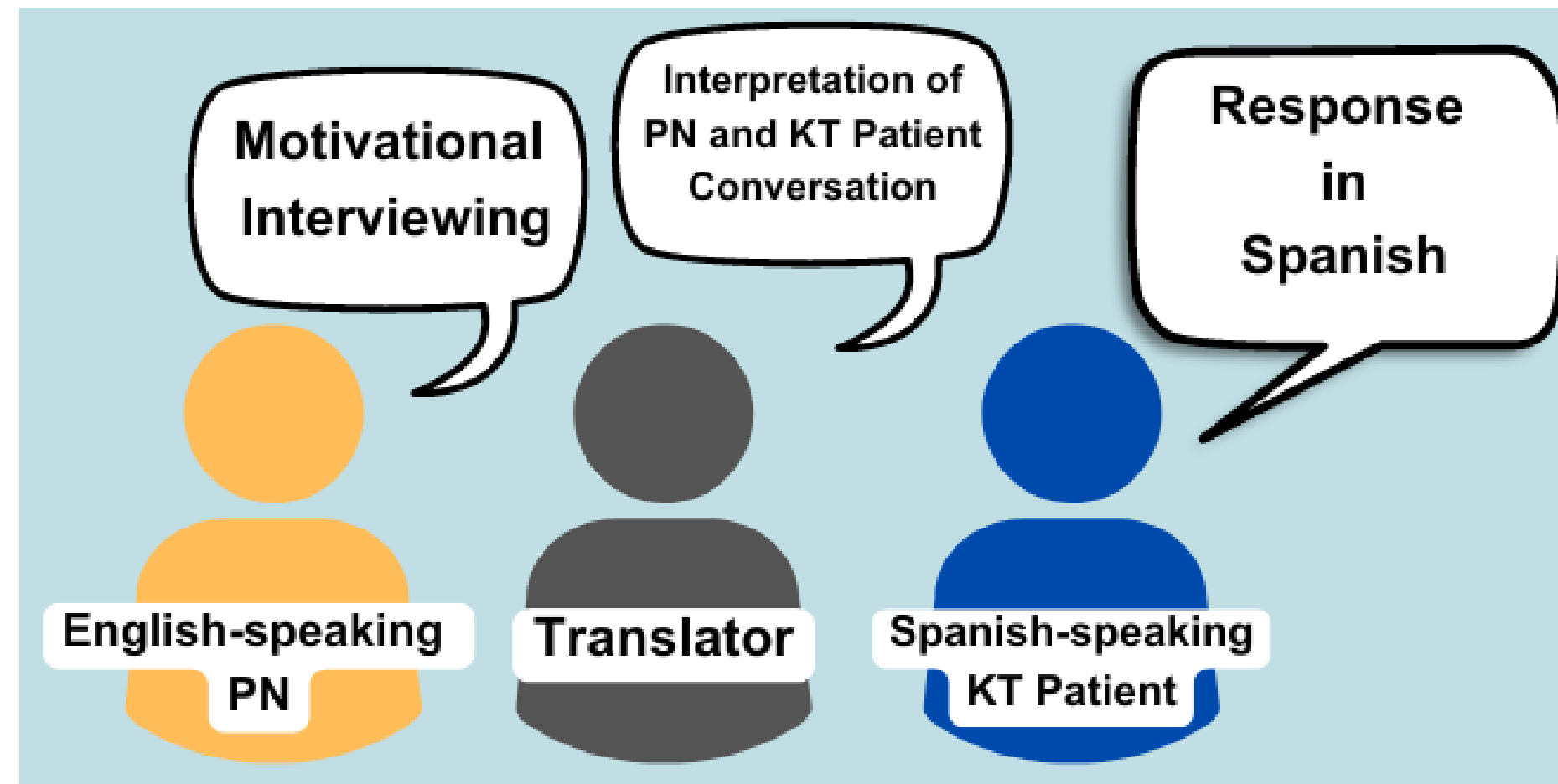


Background

- The kidney transplant (KT) evaluation requires extensive medical assessments.
- To enhance support during the KT evaluation process, this study compares two patient-centered approaches: **peer navigators (PN)**, using former transplant patients trained in motivational interviewing versus **fast track (FT)**, a streamlined coordinated care process.
- Spanish-speaking patients encounter barriers which contribute to underrepresentation on transplant waiting lists. These barriers include:
 - Communication challenges
 - Lack of KT knowledge
 - Cultural factors

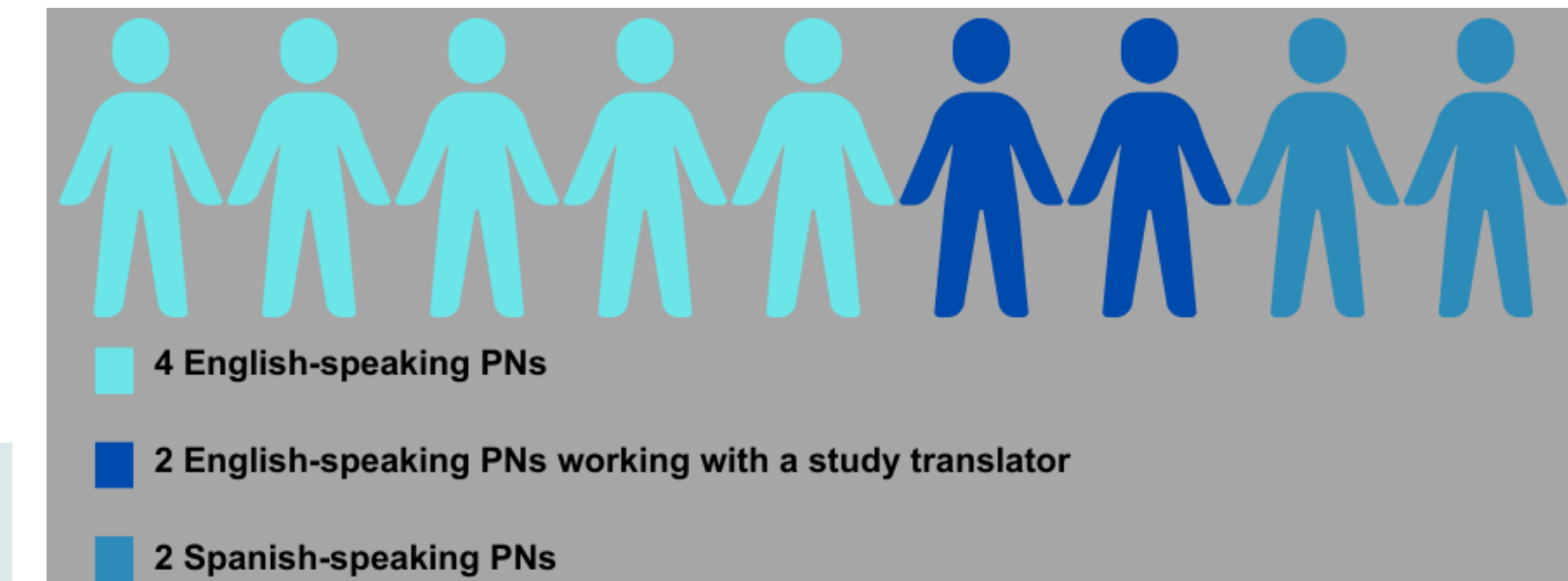
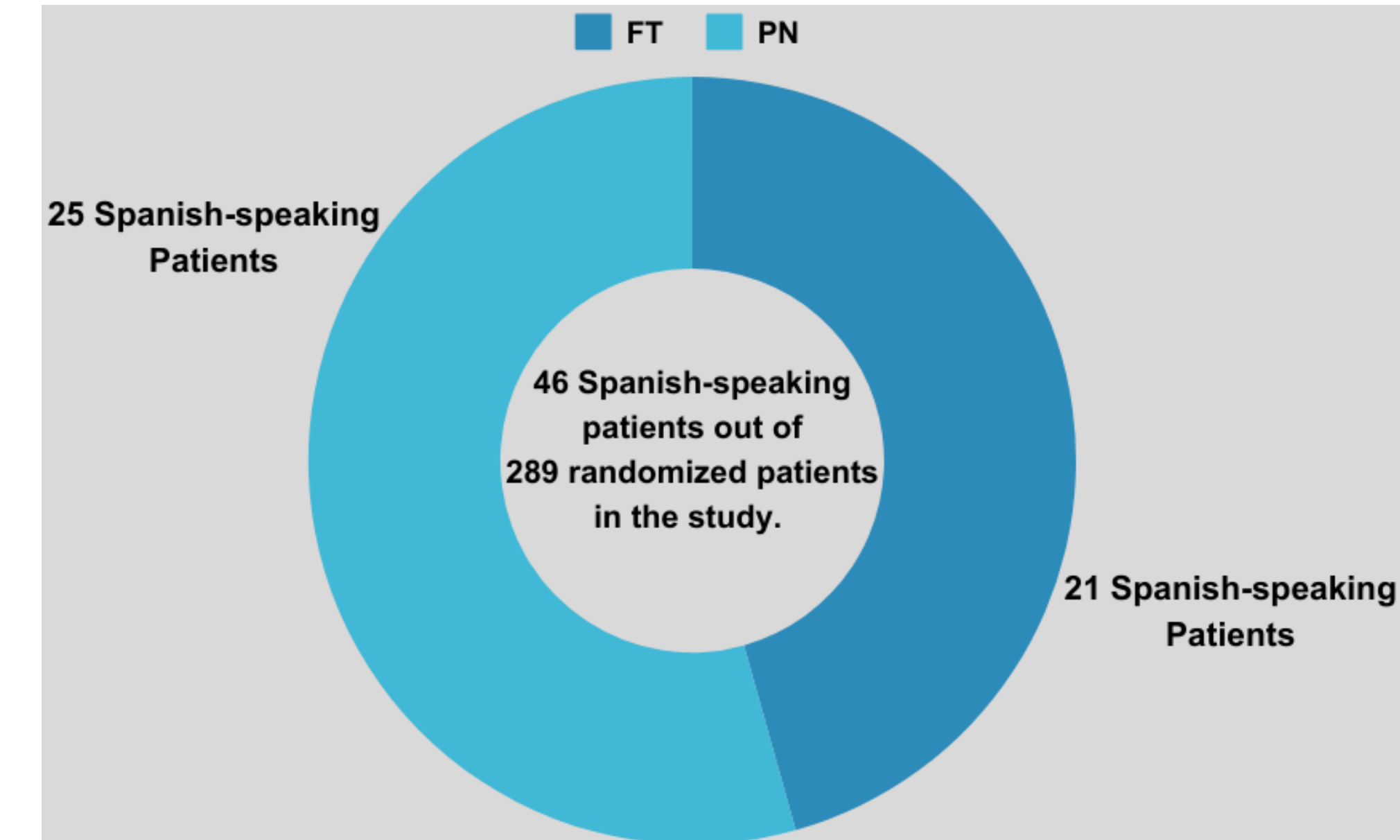
Peer Navigator Intervention Arm



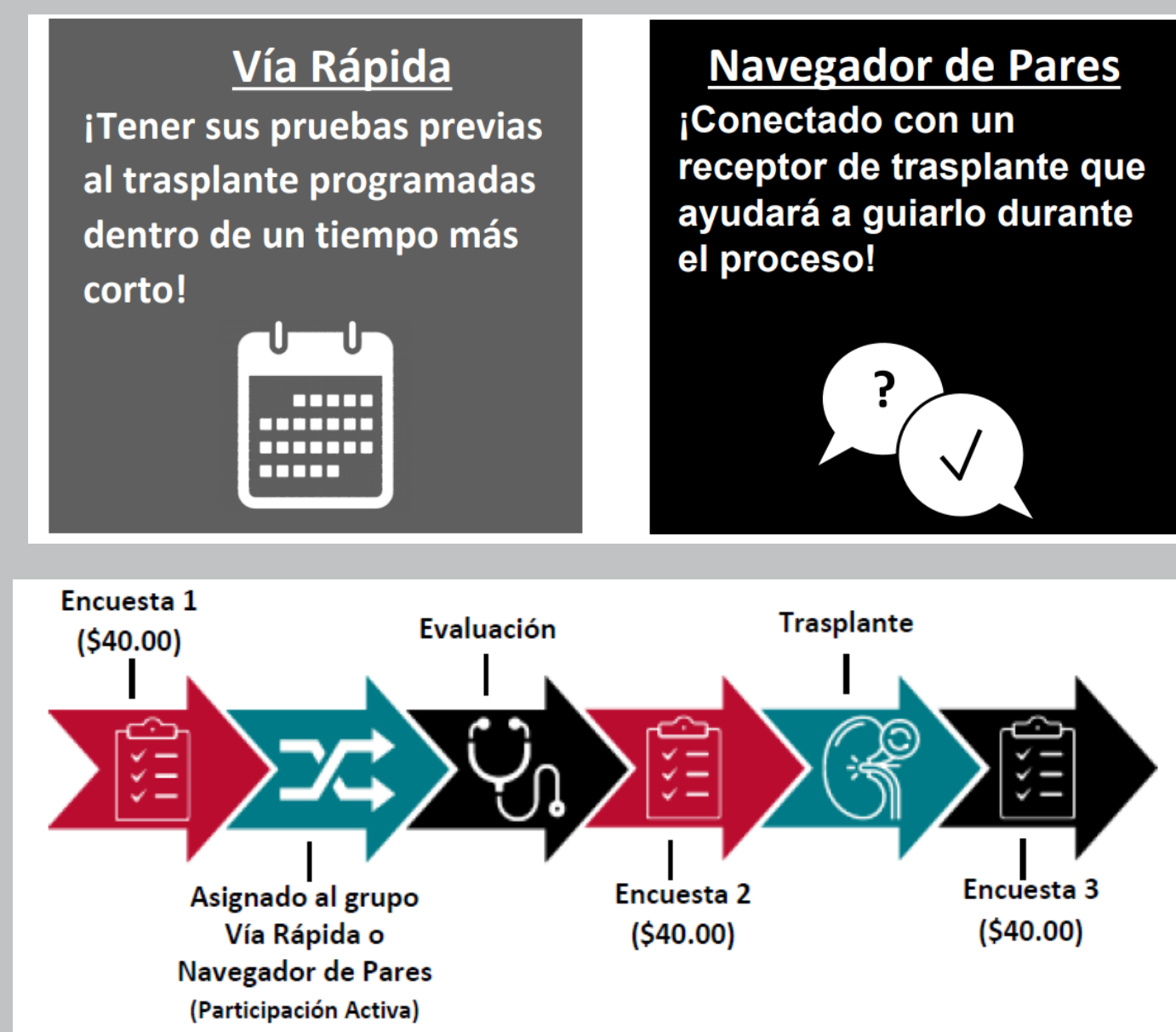
- Current Spanish-speaking PN patients have had an average of 5 sessions with their English-speaking PN.
- Spanish-speaking patients randomized to PN have reported difficulties:
 - Understanding KT evaluation
 - Navigating insurance
 - Communicating effectively with clinic personnel.
- Spanish-speaking patients randomized to the PN intervention meet regularly with a KT recipient and study translator for KT evaluation support.
- Meetings occur about once a month.



Results



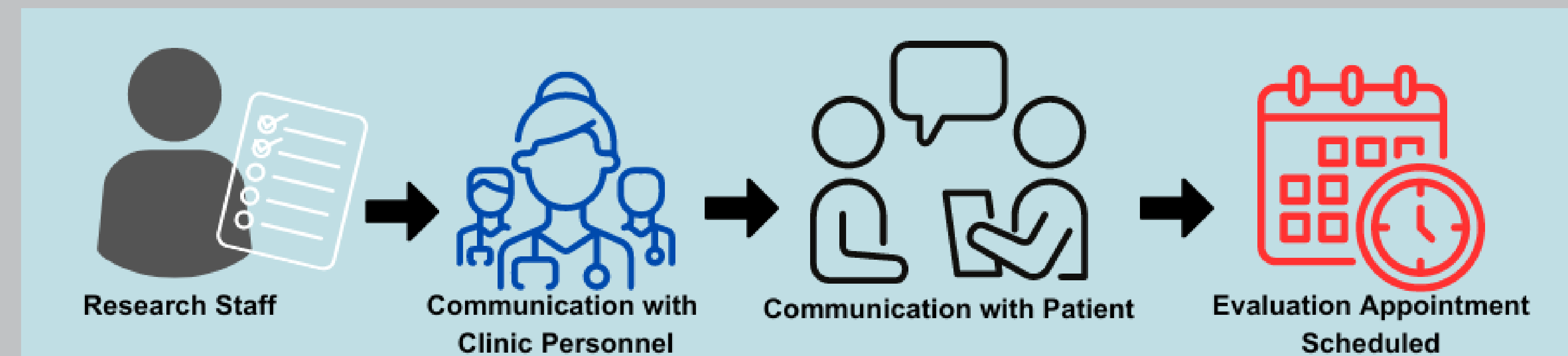
Methods



Patient Facing Study Information for Spanish-Speaking KT patients

Fast Track Intervention Arm

Patients assigned to the FT intervention receive assistance from Spanish-speaking study staff to streamline scheduling of evaluation appointments.



Discussion

- Minimizing language barriers in Spanish-speaking patients through use of an interpreter during PN meetings improves support in the KT process.
- Although labor intensive, using an interpreter ensures better representation in research, even if it does not exactly mimic the experience of an English-speaking participant.
- Tailored approaches such as language concordant patient education and streamlined appointments may help patients navigate the challenges of KT.